

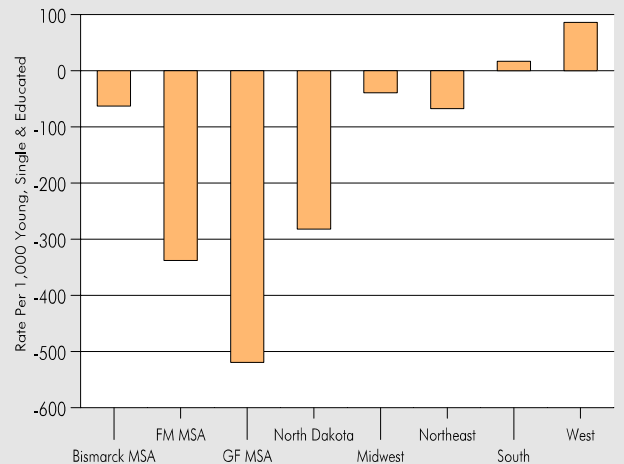
Net Domestic Migration for the Young, Single, and College Educated for North Dakota: 1995 to 2000

The western and southern states were most attractive to young, single and college educated adults between 1995 and 2000. A recently released special tabulation from Census 2000 looks at the migration of young, single and college educated for states and metropolitan statistical areas (MSAs) throughout the nation. The numbers show net immigration for the West and South regions of the nation and net outmigration for the Midwest and Northeast (Figure 1).

North Dakota had the highest net outmigration rate of young, single and college educated adults in the nation (Table 1). Of the 276 MSAs throughout the nation, the Grand Forks MSA had the 5th highest net outmigration rate of young, single and college educated and the Fargo-Moorhead MSA had the 35th highest rate (Figure 1).

The young are defined as those who were aged 25 to 39 in 2000; the single are those who were never married, or were widowed or divorced in 2000; and the college educated are those who had at least a Bachelor's degree in 2000. The net migration rate is based on an approximated 1995 population, which is the sum of young, single, and college educated people who reported living in the area in both 1995 and 2000, and those who reported living in that area in 1995 but lived elsewhere in 2000. The net migration rate is calculated by dividing the net migration between 1995 to 2000 by the approximated 1995 population and multiplying by 1,000.

Figure 1. Net Domestic Migration Rates of Young, Single and College Educated by Selected Region and MSA: 1995 to 2000



Source: U.S. Census Bureau, Census 2000 Special Tabulation. Notes: MSA Metropolitan Statistical Area. FM Fargo-Moorhead. GF Grand Forks. The net migration rate is calculated by dividing the net migration between 1995 to 2000 by the approximated 1995 population and multiplying by 1,000.

Figure 2. Net Domestic Migration Rates for the Young, Single, and College Educated by Metropolitan Statistical Area (MSA): 1995 to 2000

Source: U.S. Census Bureau, Census 2000 Special Tabulation, <http://www.census.gov/population/www/cen2000/phc-t34.html>

Notes: The young are those who were aged 25 to 39 in 2000; the single are those who were never married, or were widowed or divorced in 2000; and the college educated are those who had at least a bachelor's degree in 2000. The net migration rate is based on an approximated 1995 population, which is the sum of young, single, and college educated people who reported living in the area in both 1995 and 2000, and those who reported living in that area in 1995 but lived elsewhere in 2000. The net migration rate is calculated by dividing the net total of movers between 1995 to 2000 by the approximated 1995 population and multiplying by 1,000.

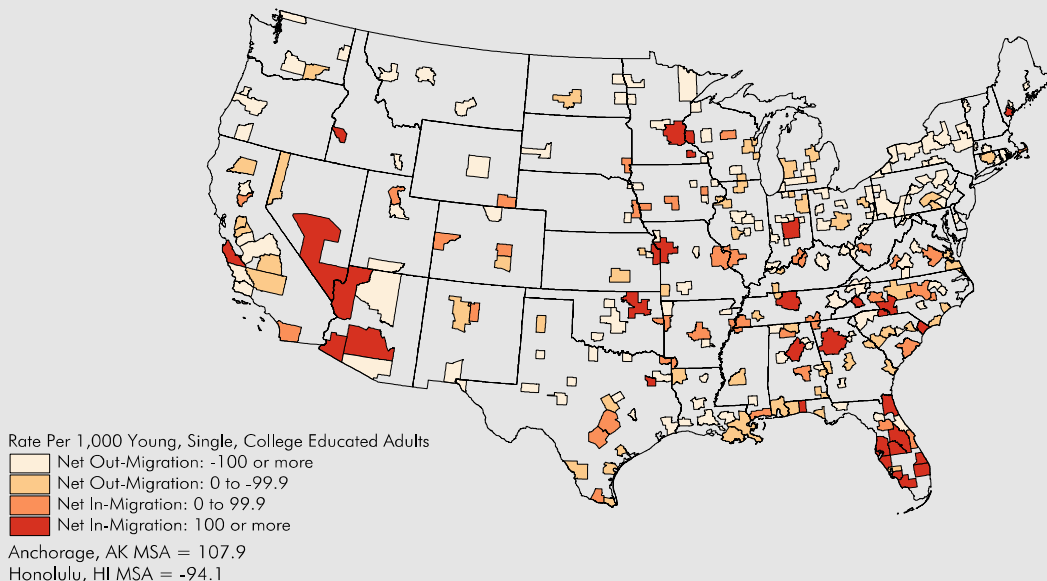


Table 1. Net Domestic Migration for the Young, Single, and College Educated for States: 1995 to 2000

Source: U.S. Census Bureau, Census 2000 Special Tabulation, <<http://www.census.gov/population/www/cen2000/phc-t34.html>>

Notes: NA Not applicable. The young are those who were aged 25 to 39 in 2000; the single are those who were never married, or were widowed or divorced in 2000; and the college educated are those who had at least a bachelor's degree in 2000. The net migration rate is based on an approximated 1995 population, which is the sum of young, single, and college educated people who reported living in the area in both 1995 and 2000, and those who reported living in that area in 1995 but lived elsewhere in 2000. The net migration rate is calculated by dividing the net migration between 1995 to 2000 by the approximated 1995 population and multiplying by 1,000.

Area	Persons ages 25 to 39, single, and college educated: 2000	Net Domestic Migration of Young, Single, and College Educated: 1995 to 2000			
		Inmigration	Outmigration	Net Migration	
				Number	Rate Per 1,000
United States	6,198,996	NA	NA	NA	NA
Alabama	60,694	10,868	18,649	-7,781	-116.3
Alaska	10,772	3,984	3,598	386	38.9
Arizona	98,329	34,850	25,586	9,264	109.9
Arkansas	27,337	5,215	7,853	-2,638	-90.4
California	926,344	170,270	97,233	73,037	92.7
Colorado	137,037	49,665	31,803	17,862	157.7
Connecticut	89,650	22,155	28,470	-6,315	-69.7
Delaware	17,192	5,536	5,767	-231	-13.9
Dist. of Columbia	48,083	25,428	25,320	108	2.5
Florida	293,981	69,053	58,599	10,454	40.1
Georgia	197,153	63,306	38,639	24,667	150.5
Hawaii	30,698	6,738	8,895	-2,157	-69.8
Idaho	15,265	5,276	5,189	87	5.9
Illinois	331,521	69,250	65,416	3,834	12.4
Indiana	90,632	17,379	31,713	-14,334	-142.3
Iowa	43,206	9,100	20,791	-11,691	-220.1
Kansas	44,749	11,250	16,275	-5,025	-104.7
Kentucky	53,485	10,912	14,323	-3,411	-62.0
Louisiana	67,089	12,103	21,834	-9,731	-130.2
Maine	20,096	5,693	7,399	-1,706	-80.1
Maryland	147,859	42,126	37,768	4,358	32.2
Massachusetts	246,772	60,198	61,260	-1,062	-4.6
Michigan	178,216	26,639	42,657	-16,018	-86.7
Minnesota	117,134	25,681	23,962	1,719	15.5
Mississippi	32,852	6,041	11,013	-4,972	-134.1
Missouri	98,223	23,259	27,945	-4,686	-47.0
Montana	14,678	4,557	7,307	-2,750	-161.5
Nebraska	29,326	6,120	10,331	-4,211	-130.3
Nevada	32,582	13,651	6,863	6,788	281.8
New Hampshire	25,225	8,005	11,159	-3,154	-114.8
New Jersey	226,965	43,138	45,922	-2,784	-13.0
New Mexico	29,283	9,240	12,127	-2,887	-93.3
New York	626,122	113,055	119,666	-6,611	-11.3
North Carolina	157,520	44,925	37,706	7,219	50.2
North Dakota	9,674	2,044	5,750	-3,706	-282.0
Ohio	198,126	32,053	50,462	-18,409	-88.2
Oklahoma	43,670	7,877	13,850	-5,973	-125.9
Oregon	71,317	24,296	17,940	6,356	103.5
Pennsylvania	243,558	41,264	70,838	-29,574	-112.4
Rhode Island	25,493	6,526	10,751	-4,225	-147.0
South Carolina	62,033	15,775	18,321	-2,546	-40.7
South Dakota	10,186	2,152	4,883	-2,731	-215.9
Tennessee	91,053	23,581	22,264	1,317	15.2
Texas	384,431	74,350	57,537	16,813	48.7
Utah	30,255	7,524	9,637	-2,113	-69.8
Vermont	14,020	5,222	7,474	-2,252	-143.5
Virginia	186,220	58,572	52,097	6,475	38.4
Washington	140,394	39,469	27,800	11,669	96.5
West Virginia	19,708	3,695	8,386	-4,691	-197.1
Wisconsin	96,008	17,004	28,228	-11,224	-107.7
Wyoming	6,780	2,856	3,670	-814	-109.2

Date of Release: June 17, 2004

North Dakota Loses Many of Its Young, Single, and College Educated Adults

Between 1995 and 2000, approximately 3,700 more young, single and college educated adults left North Dakota than moved into the state. This net loss translates into a rate that, when compared to other states, is the highest net outmigration rate in the nation.

This month's "Economic Briefs," a monthly publication from the North Dakota State Data Center at North Dakota State University, focuses on a recently released special tabulation from Census 2000 which looks at the migration of young, single and college educated adults for states and metropolitan statistical areas (MSAs) throughout the nation. North Dakota had the highest net outmigration rate of young, single and college educated in the nation. Of the 276 metropolitan statistical areas (MSAs) throughout the nation, the Grand Forks MSA had the 5th highest net outmigration rate of young, single and college educated and the Fargo-Moorhead MSA had the 35th highest rate. "The high net losses in these North Dakota metropolitan areas reflect the high concentration of college educated young adults in these places and the tendency for them to move once they graduate. The metropolitan areas with the greatest losses are cities dominated by major universities unable to absorb a constant flow of graduates. The challenge we face in North Dakota is to create opportunities throughout the state for our graduates," said Richard Rathge, Director of the State Data Center.

The western and southern states were most attractive to young, single and college educated adults between 1995 and 2000. Nevada and Colorado has the highest net immigration rates of this select group while the Midwest and Northeast both experienced net outmigration of this group. Iowa and South Dakota followed North Dakota with the second and third highest net outmigration rates in the nation of young, single and college educated adults.

The young are defined as those who were aged 25 to 39 in 2000; the single are those who were never married, or were widowed or divorced in 2000; and the college educated are those who had at least a bachelor's degree in 2000. The net migration rate is based on an approximated 1995 population, which is the sum of young, single, and college educated people who reported living in the area in both 1995 and 2000, and those who reported living in that area in 1995 but lived elsewhere in 2000. The net migration rate is calculated by dividing the net migration between 1995 to 2000 by the approximated 1995 population and multiplying by 1,000.

<p>North Dakota State Data Center North Dakota State University IACC Building, Room 424 or PO Box 5636 Fargo, North Dakota 58105-5636 Ph: (701) 231-7980 Fax: (701) 231-9730</p>	<p>For more information, contact:</p>		
<p>Dr. Richard Rathge, Director (701) 231-8621 Richard.Rathge@ndsu.nodak.edu</p>	<p>Karen Olson, Information Specialist (701) 231-1060 k.olson@ndsu.nodak.edu</p>	<p>View publication online at: <http://www.ndsu.nodak.edu/sdc/publications/publications.htm></p>	