

BILL OF MATERIALS

ITEM	PCS.	SIZE	AMOUNT
CONCRETE FLOOR			
CONCRETE	1	8'-0" x 8'-0" x 4"	1 CU YD
ANCHOR BOLTS	14	3/4" x 6"	14 EA.
OPTIONAL WOOD FLOOR			
JOISTS	8	2 x 4 @ 8'-0"	27 FBM
JOIST HEADER	2	2 x 6 @ 8'-0"	18 FBM
END JOIST & SKIDS	8	4 x 4 @ 8'-0"	54 FBM
FLOORING, EXTERIOR PLYWOOD	2	3/4" x 4'-0" x 8'-0"	2 SHEETS
EYE BOLTS	2	1/2" x 6"	2 EA.
NAILS, COMMON	164		1 1/2 LBS.
NAILS, GALVANIZED	64		3/4 LB.
2 REAR PANELS			
STUDS	4	2 x 4 @ 8'-0"	16 FBM
SILL, GIRTS, & PLATE	10	2 x 4 @ 4'-0"	27 FBM
SASH BLOCKING	1	2 x 4 @ 2'-0"	2 FBM
SIDING, EXTERIOR PLYWOOD	2	3/4" x 4'-0" x 8'-0"	2 SHEETS
BATTEN, EXTERIOR PLYWOOD	1	3/4" x 3'-0" x 8'-0"	1 STRIP
WINDOW	1	1'-0" x 3'-0"	1 EA.
NAILS, COMMON	164		1 1/2 LBS.
NAILS, GALVANIZED	64		3/4 LB.
4 SIDE PANELS			
GIRTS & SILL	10	2 x 4 @ 4'-0"	27 FBM
FRONT & CENTER STUDS	6	2 x 4 @ 8'-0"	32 FBM
REAR STUDS	2	2 x 4 @ 8'-0"	8 FBM
SIDING, EXTERIOR PLYWOOD	4	3/4" x 4'-0" x 8'-0"	4 SHEETS
BATTENS, EXTERIOR PLYWOOD	2	3/4" x 3'-0" x 8'-0"	2 STRIPS
RAFTER TRIM, FRONT	2	3/4" x 4'-0" x 2'-0"	2 STRIPS
RAFTER TRIM, REAR	2	3/4" x 4'-0" x 2'-0"	2 STRIPS
NAILS, COMMON	164		2 1/2 LBS.
NAILS, GALVANIZED	64		2 LBS.
1 FRONT PANEL			
STUDS	3	2 x 4 @ 8'-0"	16 FBM
SILL, GIRTS, & PLATE	5	2 x 4 @ 4'-0"	14 FBM
HEADER	1	2 x 6 @ 4'-0"	4 FBM
SASH BLOCKING	1	2 x 4 @ 4'-0"	3 FBM
SIDING, EXTERIOR PLYWOOD	1	3/4" x 4'-0" x 8'-0"	1 SHEET
WINDOW	1	2'-5" x 3'-0"	1 EA.
NAILS, COMMON	164		1 LB.
NAILS, GALVANIZED	64		1/2 LB.
1 FRONT PANEL - SLIDING DOOR			
STUDS	3	2 x 4 @ 8'-0"	16 FBM
PLATE	1	2 x 4 @ 4'-0"	3 FBM
HEADER	1	2 x 6 @ 4'-0"	4 FBM
SIDING, EXTERIOR PLYWOOD	1	3/4" x 2'-7" x 7'-5"	1 STRIP
	1	3/4" x 4'-0" x 7'-5"	1 STRIP
	1	3/4" x 7'-4" x 4'-0"	1 STRIP
DOOR, EXTERIOR PLYWOOD	1	3/4" x 4'-0" x 8'-0"	1 SHEET
SLIDING DOOR TRACK	1	8'-0" LONG	1 EA.
SLIDING DOOR TROLLEYS	2	3" DIA WHEEL	2 EA.
DOOR STAY ROLLERS	2	2" DIA WHEEL	2 EA.
NAILS, COMMON	164		1 LB.
NAILS, GALVANIZED	64		3/4 LB.
2 ROOF PANELS			
RAFTERS	4	2 x 4 @ 12'-0"	32 FBM
GIRTS	14	2 x 4 @ 4'-0"	38 FBM
FACIA, FRONT	1	3/4" x 4'-0" x 8'-0"	
FACIA, REAR	1	3/4" x 4'-0" x 8'-0"	
SOFFIT, FRONT	1	3/4" x 2'-7" x 8'-0"	1 SHEET
SOFFIT, REAR	1	3/4" x 7'-8" x 8'-0"	1 SHEET
NAILS, COMMON	164		1 1/2 LBS.
NAILS, GALVANIZED	64		3/4 LBS.
NAILS, ALUMINUM		2" SCREW SHANK	100 EA.
ROOFING, ALUMINUM	2	BY CRMP	2 SHEETS
		.024" x 30" x 12'-0"	
FRAMING ANCHORS (AK)	4	18 GAUGE	4 EA.
FRAMING ANCHORS (AL)	4	18 GAUGE	4 EA.

USES OF UTILITY SHED

- I. GENERAL
 1. ALL JOINTS MAY BE CALKED TO PROVIDE A MORE WEATHER PROOF STRUCTURE.
 2. DOORS MAY BE SLIDING OR SWING TYPE.
 3. CONCRETE OR WOOD FLOOR SHOWN ON SHEET No. 2.

II. TOOL SHED 8'-0" x 8'-0" (SHOWN ABOVE)

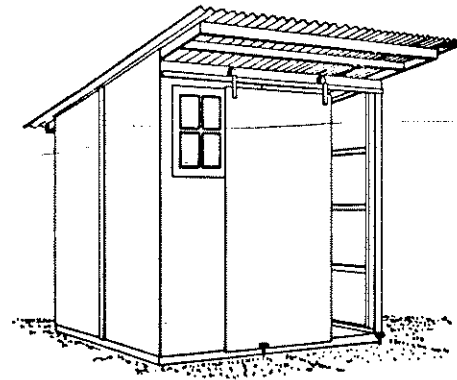
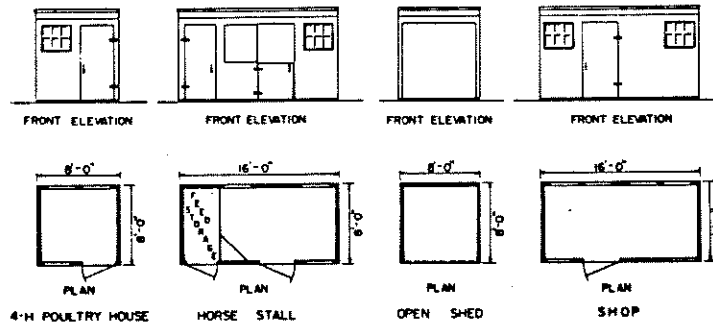
- III. 4-H 20 BIRD POULTRY HOUSE 8'-0" x 8'-0"
 1. USE 2" INSULATION WITH VAPOR BARRIER IN WALLS & CEILING.
 2. INTERIOR FINISH SHOULD BE A DENSE, EASILY CLEANED MATERIAL.
 3. USE HOPPER TYPE WINDOWS FOR VENTILATION.
 4. PROVIDE SCREENS FOR DOORS & WINDOWS (1" MESH DESIRED).

- IV. HORSE STALL OR SHEEP PEN 8'-0" x 16'-0"
 1. STALL AREA INTERIOR, FINISHED WITH 1/2" PLYWOOD.
 2. PLANK FLOOR RECOMMENDED.

V. SHOP

NOTE

BATTENS, RAFTER TRIM, SOFFITS, & FACIAS TO BE CUT FROM 1 SHEET OF 3/4" x 4'-0" x 8'-0" EXTERIOR PLYWOOD & WASTE FROM THE SIDING USED ON THE SIDE & REAR PANELS



PERSPECTIVE

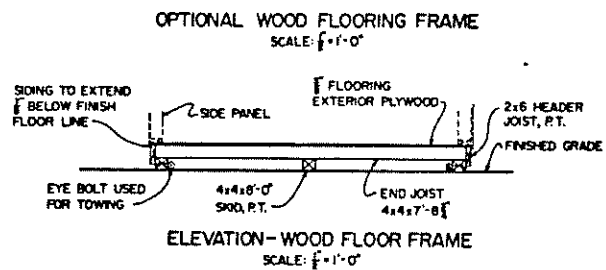
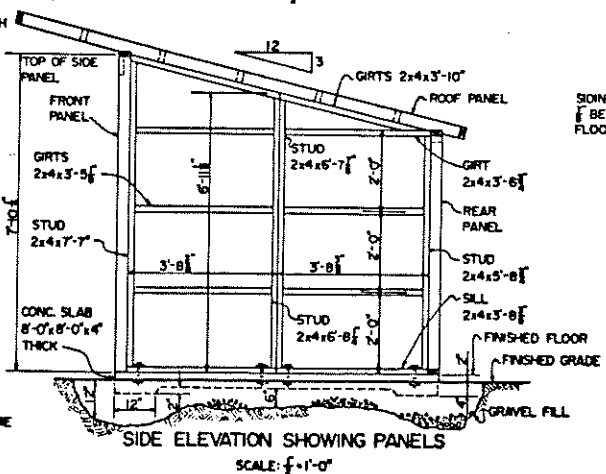
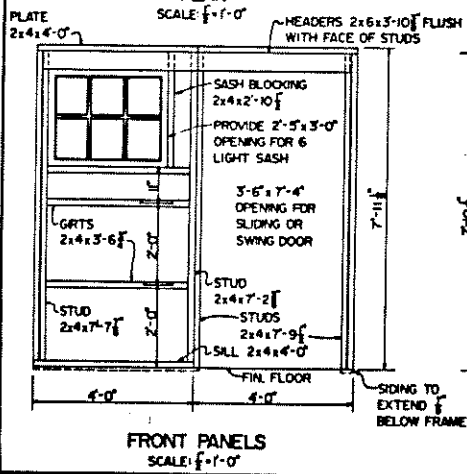
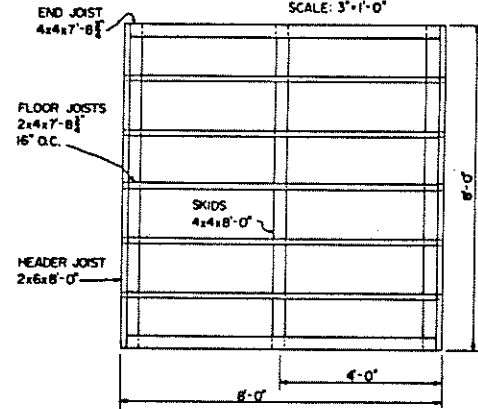
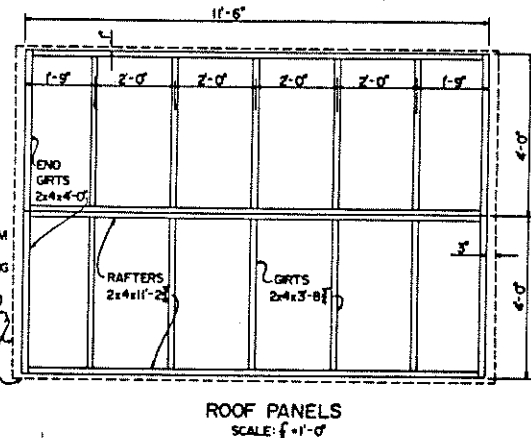
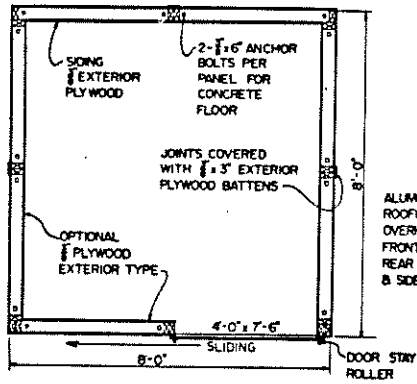
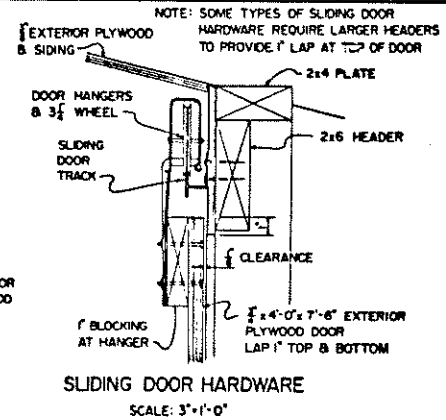
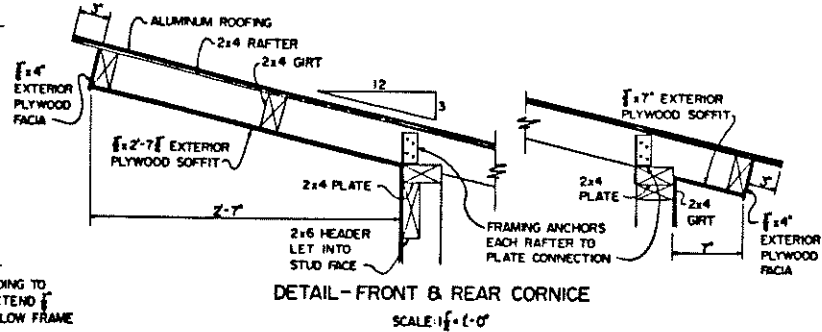
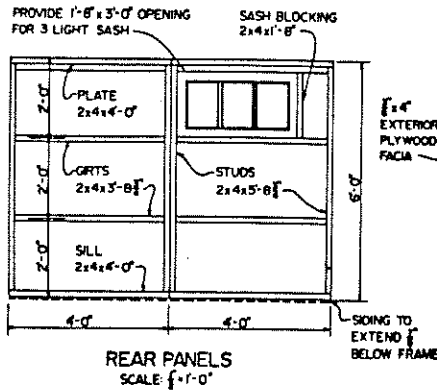
UNIV. OF CONN. PLAN No. 302

COOPERATIVE EXTENSION WORK IN
 AGRICULTURE AND HOME ECONOMICS
 STATE OF NORTH DAKOTA
 NORTH DAKOTA STATE UNIVERSITY
 DEPARTMENT OF AGRICULTURE AND APPLIED SCIENCE

AND
 UNITED STATES DEPARTMENT OF AGRICULTURE COOPERATING

UTILITY SHED

CONN. '70 6100 SHEET 1 OF 2



NOTE: PLYWOOD TO BE NAILED WITH 6d GALVANIZED NAILS 6" O.C. AT EXTERIOR EDGES & 12" O.C. AT INTERMEDIATE JOINTS.

COOPERATIVE EXTENSION WORK IN AGRICULTURE AND HOME ECONOMICS
STATE OF NORTH DAKOTA
NORTH DAKOTA STATE UNIVERSITY
OF AGRICULTURE AND APPLIED SCIENCES
AND
UNITED STATES DEPARTMENT OF AGRICULTURE COOPERATING

UTILITY SHED

CONN. 70	6100	SHEET 2 OF 2
----------	------	--------------