

A843-21

North Dakota Soybean

Variety Trial Results for 2021 and Selection Guide

Hans Kandel, Carrie Miranda, Sam Markell and Chad Deplazes (NDSU Main Station); Mike Ostlie, Blaine Schatz, Greg Endres, Ezra Aberle, Tim Indergaard, Harley Burgard and Melissa Hafner (Carrington Research Extension Center); Kelly Cooper, Heidi Eslinger and Seth Nelson (Oakes Irrigation Site); Eric Eriksmoen, Austin Kraklau and Jayden Hansen (North Central Research Extension Center, Minot); Bryan Hanson, Lawrence Henry, and Jewel Faul (Langdon Research Extension Center); John Rickertsen and Michael Wells (Hettinger Research Extension Center); Jerry Bergman, Gautam Pradhan, Cameron Wahlstrom, Justin Jacobs, Andrina Turnquist and Tyler Tjelde (Williston Research Extension Center); Katelyn Landeis, Melissa Seykora and Brian Zimprich (NDSU Extension)

Variety trial data from all NDSU Research Extension Centers for all crops can be found at www.ag.ndsu.edu/varietytrials. Several herbicide traits are represented in the tables: RR = Roundup Ready, RRXT = RR2Xtend, F = Flex, X or XT = Xtend, GT = glyphosate tolerant, LL = Liberty Link and GT27 = Liberty Link GT27.

List of Tables

Table 1. Agronomic Characteristics of Public Soybean Varieties Suitable for North Dakota Production.

Table 2. Full Company Name, Abbreviated Name Used in Tables and Website.

Table 3. 2021 NDSU Enlist, GT27, RR and Xtend Soybean Iron-deficiency Chlorosis Trial.

Table 4. 2021 NDSU Conventional Soybean Iron-deficiency Chlorosis Trial.

Table 5. 2021 NDSU Enlist, GT27, RR and Xtend Soybean Cyst Nematode Yield Trial.

Table 6. 2021 NDSU Combined SCN-infested Soil Soybean non-GMO Variety Trial.

Table 7. 2021 NDSU Enlist, GT27, RR and Xtend Soybean - Central Locations in North Dakota.

Table 8. 2021 NDSU Conventional and Liberty Link Soybean, Central Locations in North Dakota.

Table 9. 2021 NDSU Conventional and Liberty Link Soybean, Southern Locations in North Dakota.

Table 10. 2021 NDSU Enlist, GT27, RR and Xtend Soybean, Southern Locations in North Dakota.

Table 11. 2021 Soybean - Dryland, Enlist, GT27, RR and Xtend - Carrington.

Table 12. 2021 Soybean - Irrigated, Conventional - Carrington.

Table 13. 2021 Soybean - Irrigated, Enlist, GT27, RR and Xtend - Carrington.

- Table 14. 2021 Soybean - Dryland, Conventional - Carrington.
- Table 15. 2021 Soybean - Enlist, GT27, RR and Xtend - Dazey (Carrington REC).
- Table 16. 2021 Soybean - Irrigated, Enlist, RR and Xtend - Oakes (Carrington REC).
- Table 17. 2021 Soybean - Irrigated, Conventional - Oakes (Carrington REC).
- Table 18. 2021 Soybean - Conventional - Dazey (Carrington REC).
- Table 19. 2021 Soybean - Enlist, GT27, RR and Xtend - LaMoure (Carrington REC).
- Table 20. 2021 Soybean - Conventional - LaMoure (Carrington REC).
- Table 21. 2021 Soybean - Enlist, GT27, RR and Xtend - Wishek (Carrington REC).
- Table 22. 2021 Soybean - Conventional - Wishek (Carrington REC).
- Table 23. 2021 Soybean - Enlist, GT, RR and Xtend - Langdon.
- Table 24. 2021 Soybean - Conventional - Langdon.
- Table 25. 2021 Soybean - Enlist, GT, RR and Xtend - Park River (Langdon REC).
- Table 26. 2021 Soybean - Conventional - Park River (Langdon REC).
- Table 27. 2021 Soybean - Enlist, GT, RR and Xtend - Cavalier (Langdon REC).
- Table 28. 2021 Soybean - Enlist, GT, RR and Xtend - Grand Forks County.
- Table 29. 2021 Soybean - Enlist, GT, RR and Xtend - Pekin (Langdon REC).
- Table 30. 2021 Soybean - Enlist, GT, RR and Xtend - Minot (North Central REC).
- Table 31. 2021 Soybean - Enlist, GT, RR and Xtend - Mohall (North Central REC).
- Table 32. 2021 Soybean - Enlist, GT, RR and Xtend - Rugby (North Central REC).
- Table 33. 2021 Soybean - GT, RR and Xtend - Hettinger (REC).
- Table 34. 2021 Soybean - GT, RR and Xtend - Mandan (Hettinger REC).
- Table 35. 2021 Soybean - Dryland, GT, RR and Xtend - Williston.
- Table 36. 2021 Soybean - Irrigated, Conventional - Nesson Valley (Williston REC).
- Table 37. 2021 Soybean - Irrigated, GT, RR and Xtend - Nesson Valley (Williston REC).
- Table 38. 2021 Soybean - Irrigated, GT, RR and Xtend - Trenton (Williston REC).
- Table 39. 2021 Soybean - Enlist, RR and Xtend - Ransom and Sargent Counties.

Soybean Variety Selection

Hans Kandel, Extension Agronomist; Sam Markell, Extension Plant Pathologist; and
Carrie Miranda, NDSU Soybean Breeder

Selection

Soybean variety selection should be based on maturity, yield, seed quality, lodging, iron-deficiency chlorosis tolerance and disease reactions. In most years, later-maturing varieties tend to yield more than early maturing varieties when evaluated at the same location.

After determining a suitable maturity for the farm, comparing yields of varieties that are of similar maturity is important. Although late maturity increases yield potential, later-maturing varieties are riskier to grow than earlier-maturing varieties because an early fall frost may kill a late-maturing variety before the beans have completely filled in the pods, which will reduce yield and percent of oil greatly.

Soybean Maturity

Soybeans respond to day length and heat units, so the actual calendar date a variety will mature is highly influenced by latitude; each variety has a narrow range of north to south adaptation. Soybean yield and quality are affected if a season-ending freeze occurs before a variety reaches physiological maturity. Dates of maturity are listed in the performance tables and indicate when varieties were physiologically mature.

Physiological maturity has been reached when 95% of the pods have reached the mature color. Varieties may have different mature pod color. Usually, harvest can commence approximately seven to 14 days after the soybean crop is physiologically mature. Relative maturity ratings also are provided for many of the varieties entered in the trials at various locations. Relative maturity ratings for private varieties were provided by the companies entering the variety in the trial.

Varieties of maturity groups 00 (double zero), 0 (zero) and 1 are suitable for eastern North Dakota and northwestern Minnesota. Maturity group 00 is very early and primarily grown in the northern Red River Valley and the north-central area of North Dakota. Maturity group 0 is adapted to Traill, Cass and Richland counties and other counties with similar latitudes. Maturity group 1 primarily is suitable for southern areas. These maturity groups are further subdivided. For example, a 0.1 maturity group is an early group 0 variety and a 0.9 is a late-maturity group 0 variety.

The best way to select a high-yielding variety is to use data averaged across several locations and years. Because weather conditions are unknown in advance, averaging across several years' data will identify how a variety might perform across different weather conditions. Selecting a variety that has performed well in dry and normal rainfall conditions is the best way to identify a variety that does relatively well, regardless of weather fluctuations. Note that some of the trial locations in 2021 had drought conditions, which reduced the yield, and data should be used with caution.

Phytophthora

Phytophthora root rot is one of the most important disease problems of soybeans in North Dakota. Phytophthora root rot tends to be more of a problem in the Red River Valley and on poorly drained, heavy soils, but the disease can cause significant stand reduction and yield loss in other areas when conditions are favorable for disease development. Management tools available to reduce Phytophthora root rot include selection of a resistant variety, use of a fungicide seed treatment, tile drainage and crop rotation.

Most varieties have Phytophthora root rot-resistance genes, and each gene confers resistance to a different race (or races) of Phytophthora. For example, a gene that may confer resistance to Race 3 may not confer resistance to Race 4, and vice versa.

Phytophthora is a variable pathogen, and many races of the pathogen exist in North Dakota. No specific gene guarantees control of the pathogen. Consequently, monitoring your fields for Phytophthora root rot every year is important. If the disease is widespread, the pathogen likely has overcome the gene being used, and the gene should not be used in future plantings.

Similarly, continually rotating effective genes is very important. Lack of gene or crop rotation can speed the development of new races. In some North Dakota fields, the pathogen already has become resistant to multiple genes. Fungicide seed treatments with activity against Phytophthora may help prevent early infection.

However, seed treatments do not provide season-long control and over time, the pathogen can become resistant to them. Consequently, fungicide seed treatments and resistance genes should be rotated. The most effective strategy would include the use of fungicide seed treatments, planting varieties with genetic resistance, water management (surface and subsurface drainage) and crop rotation.

White Mold

Varieties have genetic differences for tolerance or resistance to white mold. Varieties that are less susceptible to white mold should be grown on fields where white mold has a history of causing problems. The same pathogen causing white mold in soybeans causes white mold in other crops (dry bean, sunflower, pea, canola, etc.). Consequently, recent white mold problems in **any crop** in that field should be noted, and crop rotation with nonhosts, such as wheat, barley or corn, is preferred for white mold management.

Fungicides are labeled for management/suppression of white mold, but applications must be made on a preventive basis. Efficacy may be inconsistent (particularly in high disease-pressure environments) and economics in low disease-risk environments are often not favorable.

Iron-deficiency Chlorosis

Iron-deficiency chlorosis (IDC) is a major problem in the eastern part of North Dakota. Iron chlorosis symptoms might be present during the two- to seven-trifoliolate leaf stages. Plants tend to recover and start to turn green again during the late vegetative, flowering and pod-filling stages. However, IDC during the early vegetative stages can reduce yield potential severely.

Some varieties are more tolerant to IDC than others. For high-pH soils with known IDC problems, select an iron chlorosis-tolerant variety of suitable maturity that is high yielding. For varieties tested by NDSU during the 2021 season, IDC scores are provided in Tables 3 and 4.

Soybean Cyst Nematode

Soybean cyst nematode (SCN), *Heterodera glycines*, is a small parasitic roundworm that attacks the roots of soybean plants. Nematodes often are undetected because above-ground symptoms are uncommon until a 15% to 30% yield loss has occurred.

Soybean cyst nematode has been confirmed in many soybean-growing counties in North Dakota. Growers are strongly urged to test their soils for SCN. If a positive sample for SCN is found, growers should begin managing SCN actively.

Crop rotation and resistance are the most important management tools against this disease. Two sources of resistance to SCN - PI88788 and Peking - are effective in the majority of the soybean fields in the state. However, the nematode is adapting to the genetic resistance, so varieties with PI88788 and Peking should be rotated. Importantly, the level of resistance in varieties is variable, even if they contain the same source of resistance, so selecting the most resistant variety possible and monitoring the field for SCN is important.

For SCN management, a rotation out of soybean for two to three years is beneficial. Dry edible beans are susceptible to SCN and should not be used as a rotation crop for managing SCN. Nematicide seed treatments also are available and may help manage SCN; however, they are not a substitute for resistance and rotation. More information of soybean cyst nematode can be found at www.thescncoalition.com.

General information about the Tables

The agronomic data presented in this publication are from replicated research plots using experimental designs that enable the use of statistical analysis. The least significant difference (LSD) numbers beneath the columns in tables are derived from the statistical analyses and only apply to the numbers in the column in which they appear. If the difference between two varieties exceeds the LSD 0.10 or 0.05 value, it means that with 90% or 95% probability, the higher-yielding variety has a significant yield advantage. If the difference between two varieties is less than the LSD value, then the soybean yields are considered similar.

The abbreviation NS is used to indicate no significant difference for that trait among any of the varieties. The CV is a measure of variability in the trial. The CV stands for coefficient of variation and is expressed as a percentage. Large CVs indicate that a large amount of variation could not be attributed to differences in the varieties. **Due to drought conditions, some locations have high CVs for yield. Data from those locations should be used with caution (see footnotes).**

In the tables, the mean indicates the average of the observations in the column. Soybean yield, oil and protein information are adjusted to 13% moisture content in the seed. **The oil and protein content data are specific for the test location and are not intended to be compared between locations.** Maturity date indicates physiological maturity, which is the date when 95% of the pods are brown or tan. At Langdon, the maturity date indicates the day when one pod on the main stem obtained the mature brown or tan color.

Look for trends for the desired trait among different experimental sites and years. Table 2 provides the full company name, abbreviated company name used in the tables and a website for the company.

Presentation of data for the varieties tested does not imply approval or endorsement by the authors or agencies conducting the tests. NDSU approves the reproduction of any table in this publication only if no portion is deleted, appropriate footnotes are given, the order of the data is not rearranged and NDSU is credited for the data.

Acknowledgments

We thank all producer cooperators for contributing their time, labor, land and other material to the 2021 soybean yield trial program in the central and southern Red River Valley and other off-station sites.

Research specialists and technicians helped with the field work and data compilation. Several secretaries assisted with this document by typing information. A special thank you goes to Lisa Johnson, Extension Plant Sciences, for assisting in the compilation of this publication.

Table 1. Agronomic Characteristics of Public Soybean Varieties Suitable for North Dakota Production.

| Variety | Maturity Group | Fargo Relative Maturity | Height | Hilum Color | Remarks¹ |
|----------------|-----------------------|--------------------------------|---------------|--------------------|----------------------------|
| ND21008GT20 | 00.8 | Early | Med. | Gray | 1,2,7 |
| ND18008GT | 00.8 | Early | Med. | Black | 1,2,7,9 |
| ND17009GT | 00.9 | Early | Med. | Black | 7 |
| ND Rolette | 00.9 | Early | Med. | Buff | 1,2,8 |
| ND Benson | 0.4 | Med. | Med. | Buff | 1,2,6,8 |
| ND Dickey | 0.7 | Med. Late | Med, | Gray | 1,3 |
| ND Stutsman | 0.7 | Med. Late | Med. | Yellow | 1,3,8 |
| ND2108GT73 | 0.8 | Late | Tall | Yellow | 4,7 |

¹Remarks: 1 = Good iron chlorosis resistance; 2 = Resistant to races 1-4 of Phytophthora root rot; 3 = Resistant to races 1 - 3 of Phytophthora root rot; 4 = Susceptible to Phytophthora root rot; 5 = Tofu bean; 6 = resistant to soybean cyst nematode (SCN); 7 = Glyphosate resistant; 8 = Tolerant to metribuzin herbicide; 9 = tolerance to soybean aphid.

Table 2. Full Company Name, Abbreviated Name Used in Tables and Website.

| Company | Abbreviated | Website |
|-------------------------|-------------|---|
| AgriGold | AgriGold | Agrigold.com/soybeans |
| BASF | BASF | agriculture.basf.us/crop-protection/products/seeds/credenz.html |
| BioGene | BioGene | www.biogeneseeds.com |
| Brushvale Seed Inc. | Brushvale | www.brushvaleseed.com |
| Champion | Chmpion | www.plantchampion.com/ |
| Channel | Channel | www.channel.com/en-us/products.html |
| Dahlman Seed Co. | Dahlman | www.dahlmanseed.com |
| Dairyland Seed Co. Inc. | Dairyland | www.dairylandseed.com |
| DuPont Pioneer | Pioneer | www.pioneer.com |
| Dyna-Gro Seed | Dyna-Gro | www.dynagroseed.com |
| Golden Harvest | Golden H. | www.goldenharvestseeds.com/soybeans |
| Hefty Seed Co. | Hefty | www.heftyseed.com |
| Impact | IMPACT | legendseeds.net/products/impact-corn-soybeans |
| Innictis Seed Solutions | Innictis | www.innictisseed.com/products/soybeans/107 |
| Integra Fortified Seed | Integra | www.wilburellisagribusiness.com/integra-seed/ |
| Legacy Seeds Inc. | Legacy | www.legacyseeds.com |
| Legend Seeds Inc. | Legend | www.legendseeds.net |
| LG Seeds | LG Seeds | www.lgseeds.com |
| MS Technologies | MS Tech. | www.mstechseed.com/ |
| N.D. Foundation Seed | NDSU | www.ag.ndsu.edu/fss/ |
| P3 Genetics | P3 Genetics | www.petersonfarmsseed.com/p3-soybeans/ |
| Peterson Farms Seed | Peterson | www.petersonfarmsseed.com |
| Prograin | Prograin | www.prograin.ca/ca/en/seeds/ |
| Proseed Inc. | Proseed | www.proseed.net |
| REA hybrids | REA | www.rea-hybrids.com |
| Richland IFC | Richland | www.richlandifc.com |
| Sevita International | Sevita | www.sevitagenetics.com |
| Stine Seed Company | Stine | www.stinseed.com/soybeans |
| Syngenta NK Brand | Syng NK | www.syngenta-us.com/seed |
| Thunder Seed Inc. | Thunder | www.thunderseeds.com |
| University of Minnesota | U of M | www.mncia.org/ |
| WinField Croplan | Croplan | www.winfieldunited.com/ |
| Zinesto | Zinesto | www.zinestoseed.com/ |

Table 3. 2021 NDSU Enlist, GT27, RR and Xtend Soybean Iron-deficiency Chlorosis Trial - Author, C. Miranda (Page 1 of 3).

| Company | Variety | Trial Mean IDC ¹ | Company | Variety | Trial Mean IDC ¹ |
|-----------|-----------|-----------------------------------|-----------|-----------|-----------------------------------|
| AgriGold | G0801E3 | 2.5 | Dyna-Gro | S12XF92 | 3.0 |
| AgriGold | G1490XF | 3.1 | Dyna-Gro | SX21906XF | 2.6 |
| Asgrow | AG 0333 | 3.0 | Dyna-Gro | SX21911XF | 3.3 |
| Asgrow | AG 0835 | 2.2 | Golden H. | GH00629X | 3.0 |
| Asgrow | AG 09X9 | 2.8 | Golden H. | GH00833E3 | 1.8 |
| Asgrow | AG 1135 | 2.6 | Golden H. | GH00982XF | 3.1 |
| Asgrow | AG0832 | 3.1 | Golden H. | GH0145X | 2.9 |
| Champion | 03X30N | 1.8 | Golden H. | GH0272XF | 2.6 |
| Champion | 052X | 2.6 | Golden H. | GH0325E3 | 1.9 |
| Champion | 0631XL | 2.8 | Golden H. | GH0443X | 1.5 |
| Champion | 0692XL | 3.7 | Golden H. | GH0452E3 | 1.6 |
| Channel | 00922R2X | 3.2 | Golden H. | GH0502XF | 3.2 |
| Channel | 0122RFX | 3.1 | Golden H. | GH0543X | 2.8 |
| Channel | 0320R2X | 1.4 | Golden H. | GH0593E3 | 2.5 |
| Channel | 0622RFX | 3.2 | Golden H. | GH0715E3 | 2.7 |
| Channel | 0721RFX | 2.8 | Golden H. | GH0749X | 3.0 |
| Channel | 1022RFX | 2.8 | Golden H. | GH0822XF | 3.3 |
| Channel | 1220RFX | 2.6 | Golden H. | GH0842E3 | 3.2 |
| Channel | 1421RFX | 2.4 | Golden H. | GH0936X | 2.8 |
| Channel | 1422RFX | 2.1 | Golden H. | GH1012E3 | 2.8 |
| Dahlman | 1102E3N | 3.4 | Golden H. | GH1032XF | 2.6 |
| Dahlman | 1111E3N | 3.0 | Golden H. | GH1362E3 | 2.9 |
| Dahlman | 1201E3N | 2.7 | Golden H. | GH1414X | 2.7 |
| Dahlman | 1213E3N | 3.0 | Golden H. | GH1442XF | 3.1 |
| Dahlman | 6010XN | 2.8 | Golden H. | GH1472E3 | 3.1 |
| Dahlman | 7203XF | 2.3 | Hefty | Z0601E | 3.1 |
| Dairyland | DSR-0119E | 2.3 | Hefty | Z0801E | 3.8 |
| Dairyland | DSR-0645E | 2.2 | Hefty | Z1001E | 3.1 |
| Dairyland | DSR-0660E | 3.2 | Hefty | Z1101E | 2.6 |
| Dairyland | DSR-0847E | 3.3 | IMPACT | 002E265 | 2.2 |
| Dairyland | DSR-0920E | 2.9 | IMPACT | 03E000N | 2.6 |
| Dairyland | DSR-1010E | 3.2 | IMPACT | 08E127N | 3.7 |
| Dairyland | DSR-1290E | 3.1 | IMPACT | 08LGT065N | 3.0 |
| Dyna-Gro | S009XF52 | 3.0 | IMPACT | 12E157N | 2.6 |
| Dyna-Gro | S009XT68 | 2.8 | IMPACT | 13E245N | 2.7 |
| Dyna-Gro | S03XT29 | 1.2 | Innictis | A00918X | 2.6 |
| Dyna-Gro | S04XF32 | 2.2 | Innictis | A00979X | 3.2 |
| Dyna-Gro | S04XT91 | 2.6 | Innictis | A0338X | 1.5 |
| Dyna-Gro | S05EN82 | 2.2 | Innictis | B0330E | 3.0 |
| Dyna-Gro | S07EN61 | 2.6 | Integra | 40089N | 2.0 |
| Dyna-Gro | S09EN41 | 3.1 | Integra | 40201N | 3.3 |
| Dyna-Gro | S09XF62 | 3.0 | Integra | 40300N | 2.3 |
| Dyna-Gro | S12EN72 | 2.6 | Integra | 40602N | 3.1 |
| Mean | | 2.6 | Mean | | 2.6 |
| CV % | | 19.1 | CV % | | 19.1 |
| LSD 0.05 | | 0.7 | LSD 0.05 | | 0.7 |
| LSD 0.10 | | 0.6 | LSD 0.10 | | 0.6 |

Table 3. 2021 NDSU Enlist, GT27, RR and Xtend Soybean Iron-deficiency Chlorosis Trial - Author, C. Miranda (Page 2 of 3).

| Company | Variety | Trial Mean IDC ¹ | Company | Variety | Trial Mean IDC ¹ |
|----------------|--------------|-----------------------------------|-------------|------------|-----------------------------------|
| Integra | 40831N | 2.6 | NDSU | 21ND08GT73 | 2.8 |
| Integra | 50081N | 2.6 | NDSU | Rolette | 1.4 |
| Integra | 50309N | 1.4 | P3 Genetics | 1911E | 3.0 |
| Integra | 70082N XF | 3.5 | P3 Genetics | 2002E | 2.5 |
| Integra | 70212XF | 2.5 | P3 Genetics | 2013E | 2.5 |
| Integra | 70622N | 2.4 | P3 Genetics | 2015E | 2.8 |
| Integra | 70832N | 2.9 | P3 Genetics | 2106E | 2.5 |
| Legacy | LS-00639 R2X | 2.2 | P3 Genetics | 2108E | 2.6 |
| Legacy | LS-00930 R2X | 2.6 | P3 Genetics | 2109E | 3.5 |
| Legacy | LS-012-20E | 2.5 | P3 Genetics | 2110E | 3.3 |
| Legacy | LS-012-21E | 2.3 | P3 Genetics | 2201E | 2.5 |
| Legacy | LS-0239 RR2X | 1.1 | P3 Genetics | 2207E | 3.3 |
| Legacy | LS-0320N E | 2.7 | P3 Genetics | 2212E | 3.0 |
| Legacy | LS-042-21E | 2.1 | P3 Genetics | 2214E | 2.9 |
| Legacy | LS-0429E | 1.8 | Peterson | 19EN008 | 2.5 |
| Legacy | LS-044-21XF | 1.6 | Peterson | 20X05 | 2.6 |
| Legacy | LS-062-21E | 2.4 | Peterson | 21XF07 | 2.7 |
| Legacy | LS-072-21E | 3.4 | Peterson | 22XF009 | 2.8 |
| Legacy | LS-082-20E | 3.7 | Peterson | 22XF03 | 3.0 |
| Legacy | LS-0829E | 3.6 | Peterson | 22XF06 | 2.7 |
| Legacy | LS-094-20XF | 2.4 | Peterson | 22XF10 | 2.6 |
| Legacy | LS-102-20E | 3.2 | Peterson | 22XF12 | 2.8 |
| Legacy | LS-122-21E | 2.7 | Peterson | 22XF14 | 2.8 |
| Legacy | LS-1320NE | 2.6 | Proseed | EL20-73N | 2.6 |
| Legend | 009E955N | 1.4 | Proseed | EL21-03N | 2.8 |
| Legend Mustang | 00X828 | 1.9 | Proseed | EL21-23N | 2.9 |
| Legend Mustang | 04X427 | 2.1 | Proseed | EL80-093N | 2.5 |
| Legend Mustang | 08X028 | 2.8 | Proseed | EL80-23 | 2.0 |
| Legend Mustang | XF07722 | 3.0 | Proseed | EL90-33N | 2.8 |
| Legend Mustang | XF10522 | 3.1 | Proseed | XF10-32 | 2.9 |
| LG Seeds | LGS00838XF | 3.2 | Proseed | XF10-72 | 2.6 |
| LG Seeds | LGS0111RX | 2.7 | Proseed | XT20-07 | 3.1 |
| LG Seeds | LGS0595RX | 2.5 | Proseed | XT20-40 | 2.3 |
| LG Seeds | LGS0701XF | 2.8 | Proseed | XT60-40N | 3.0 |
| LG Seeds | LGS0822E3 | 2.4 | Proseed | XT70-09N | 2.5 |
| LG Seeds | LGS1203E3 | 2.8 | Proseed | XT80-20N | 1.1 |
| LG Seeds | LGS400RX | 2.3 | Proseed | XT90-50 | 2.7 |
| NDSU | ND16-7108 | 2.7 | REA | R0112XF | 2.4 |
| NDSU | ND17-19726 | 1.9 | REA | R0632XF | 2.5 |
| NDSU | ND17-26003 | 3.0 | REA | R1042XF | 2.7 |
| NDSU | ND17009GT | 3.8 | REA | R1350XF | 2.6 |
| NDSU | ND18008GT | 2.7 | REA | RX00912 | 3.1 |
| NDSU | 21ND008GT20 | 1.2 | REA | RX0411 | 2.6 |
| Mean | | 2.6 | Mean | | 2.6 |
| CV % | | 19.1 | CV % | | 19.1 |
| LSD 0.05 | | 0.7 | LSD 0.05 | | 0.7 |
| LSD 0.10 | | 0.6 | LSD 0.10 | | 0.6 |

Table 3. 2021 NDSU Enlist, GT27, RR and Xtend Soybean Iron-deficiency Chlorosis Trial - Author, C. Miranda (Page 3 of 3).

| Company | Variety | Trial Mean IDC ¹ | Company | Variety | Trial Mean IDC ¹ |
|----------|------------|-----------------------------|----------|----------|-----------------------------|
| Stine | 06EC23 | 2.0 | Syng NK | S05-N5X | 2.8 |
| Stine | 07EA36 | 3.2 | Thunder | SB8001 | 2.7 |
| Syng NK | NK009-T1XF | 2.8 | Thunder | SB81006 | 2.7 |
| Syng NK | NK02-M4XF | 3.1 | Thunder | SB8104N | 2.2 |
| Syng NK | NK04-G8E3 | 1.3 | Thunder | SB88007N | 2.2 |
| Syng NK | NK05-W3XF | 2.7 | Thunder | SB8903N | 1.1 |
| Syng NK | NK08-B7XF | 3.0 | Thunder | TE7011N | 2.9 |
| Syng NK | NK10-W8XF | 2.7 | Thunder | TE71008N | 1.9 |
| Syng NK | NK14-C7XF | 2.9 | Thunder | TE7207 | 2.1 |
| Syng NK | S006-R7X | 3.0 | Thunder | TX8109N | 2.6 |
| Syng NK | S008-E3 | 1.5 | Thunder | TX82008N | 3.7 |
| Syng NK | S02-E3 | 2.6 | Thunder | TX8206N | 3.2 |
| Syng NK | S02-F9X | 3.2 | Thunder | TX8207N | 2.7 |
| Syng NK | S04-Q7X | 1.3 | Thunder | TX8211N | 3.2 |
| Mean | | 2.6 | Mean | | 2.6 |
| CV % | | 19.1 | CV % | | 19.1 |
| LSD 0.05 | | 0.7 | LSD 0.05 | | 0.7 |
| LSD 0.10 | | 0.6 | LSD 0.10 | | 0.6 |

¹IDC score was 1-5, with 1-green, 3-yellow, 5-dead tissue.

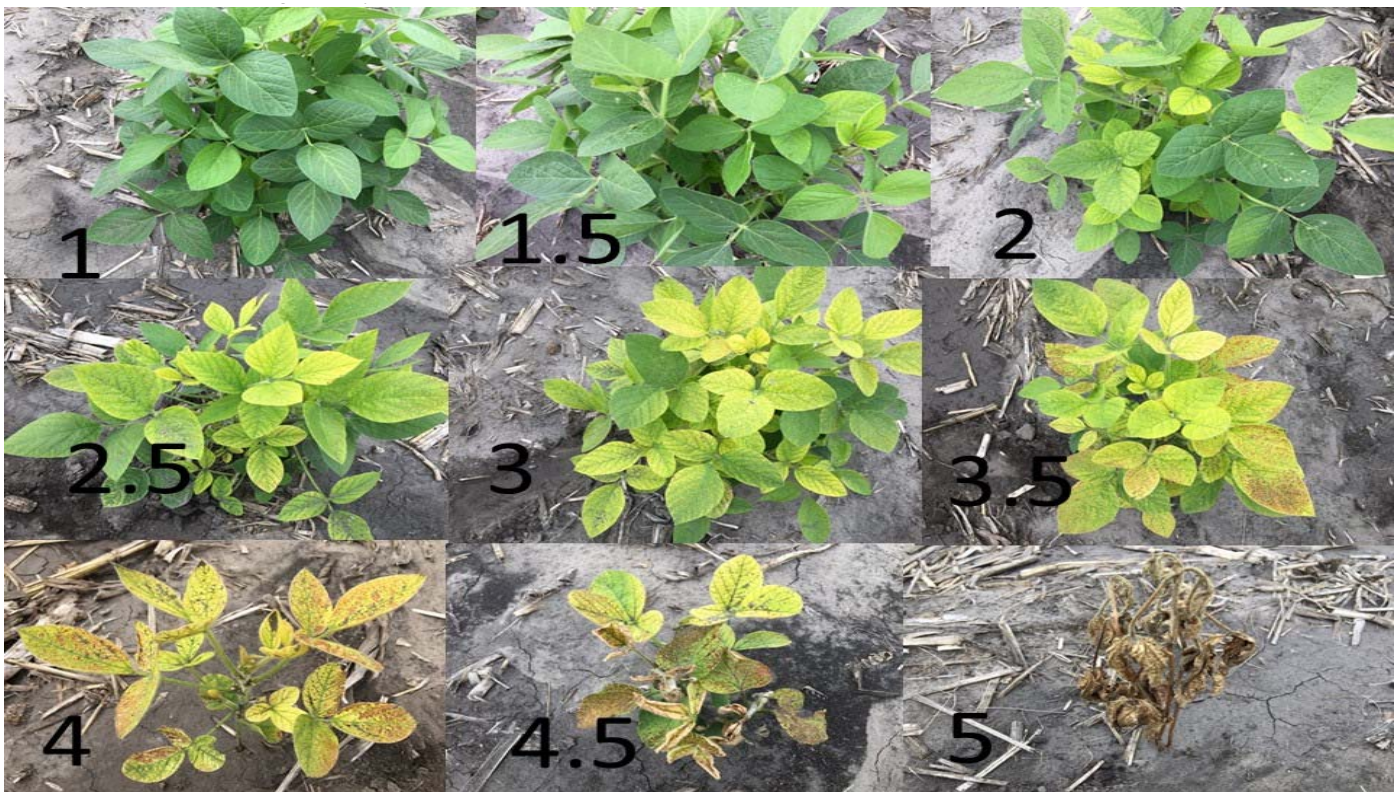


Table 4. 2021 NDSU Conventional Soybean Iron-deficiency Chlorosis Trial - Author, C. Miranda.

| Company | Variety | Trial Mean IDC ¹ | Company | Variety | Trial Mean IDC ¹ |
|-----------|----------------------|-----------------------------|----------|------------|-----------------------------|
| Asgrow | AG 0333 ² | 2.1 | NDSU | ND Rolette | 1.2 |
| Asgrow | AG 05X9 ² | 2.0 | NDSU | Stutsman | 1.6 |
| Asgrow | AG 0832 ² | 1.8 | NDSU | ND1406HP | 2.9 |
| Asgrow | AG 0835 ² | 2.6 | NDSU | ProSoy | 2.9 |
| Asgrow | AG 09X9 ² | 2.0 | NDSU | Sargent | 3.2 |
| Asgrow | AG 1135 ² | 1.6 | Pioneer | P.91M10 | 1.9 |
| BASF | CZ 0419 GTLL | 2.2 | Prograin | Asana | 3.1 |
| Brushvale | BS1146 | 2.1 | Prograin | Marula | 2.3 |
| Brushvale | BS1512 | 2.6 | Richland | MK0249 | 2.1 |
| Legacy | LS020-20 | 1.5 | Richland | MK0508 | 1.6 |
| Legacy | LS040-21 | 2.4 | Richland | MK0603 | 1.7 |
| MS Tech. | XO 0101E | 1.8 | Richland | MK1016 | 2.2 |
| MS Tech. | XO 0311E | 2.0 | Richland | MK146 | 2.8 |
| MS Tech. | XO 0521E | 1.6 | Richland | MK41 | 2.3 |
| MS Tech. | XO 0731E | 2.7 | Richland | MK808CN | 2.1 |
| MS Tech. | XO 1041E | 2.6 | Richland | MK9101 | 2.0 |
| NDSU | ND Benson | 1.2 | Sevita | Astor | 3.3 |
| NDSU | ND Dickey | 1.8 | Sevita | Panorama | 2.5 |
| NDSU | ND Henson | 2.2 | Sevita | Skyline | 4.2 |
| Mean | | 2.2 | Mean | | 2.2 |
| CV % | | 27.6 | CV % | | 27.6 |
| LSD 0.05 | | 0.8 | LSD 0.05 | | 0.8 |
| LSD 0.10 | | 0.7 | LSD 0.10 | | 0.7 |

¹IDC score was 1-5, with 1-green, 3-yellow, 5-dead tissue.

²Roundup Ready and Extend check varieties.



Soybean plants with IDC scores; 1 is green and 5 is dead tissue.

Table 5. 2021 NDSU Enlist, GT27, RR and Xtend Soybean Cyst Nematode Yield Trial - Author, C. Miranda.

| Company | Variety | Mat. Group | Maturity ¹ (date) | Seed Oil (%) | Seed Protein (%) | Seed Yield | | | |
|-----------|-----------|------------|---------------------------------|-----------------|---------------------|-------------------|---------|-------------|------------|
| | | | | | | Colfax | Prosper | 2-site Avg. | 2-yr. Avg. |
| | | | | | | ------(bu/a)----- | | | |
| Dahlman | 1201E3N | 0.1 | 9/10 | 19.5 | 37.5 | 24.5 | 43.4 | 34.0 | -- |
| Dahlman | 1213E3N | 1.3 | 9/1 | 19.7 | 37.0 | 41.7 | 52.7 | 47.2 | -- |
| Dahlman | 7203XF | 0.3 | 9/8 | 21.0 | 37.4 | 19.6 | 22.9 | 21.3 | -- |
| Dahlman | 7210XF | 1.0 | 9/28 | 20.3 | 36.6 | 45.8 | 58.0 | 51.9 | -- |
| Dahlman | 7213XF | 1.3 | 9/28 | 20.4 | 36.2 | 42.4 | 53.1 | 47.8 | -- |
| Golden H. | GH0502XF | 0.5 | 9/14 | 19.2 | 37.3 | 42.3 | 46.8 | 44.5 | -- |
| Golden H. | GH0593E3 | 0.5 | 9/16 | 20.5 | 36.0 | 37.5 | 31.1 | 34.3 | -- |
| Golden H. | GH0749X | 0.7 | 9/24 | 19.8 | 37.4 | 48.4 | 48.8 | 48.6 | 51.4 |
| Golden H. | GH0822XF | 0.8 | 9/22 | 20.0 | 35.8 | 27.0 | 51.4 | 39.2 | -- |
| Golden H. | GH0842E3 | 0.8 | 9/22 | 19.2 | 37.3 | 33.9 | 51.2 | 42.6 | -- |
| Golden H. | GH1032XF | 1.0 | 9/24 | 18.7 | 38.1 | 63.5 | 47.5 | 55.5 | -- |
| Golden H. | GH1362E3 | 1.3 | 9/30 | 19.2 | 37.6 | 64.9 | 56.1 | 60.5 | -- |
| Golden H. | GH1442XF | 1.4 | 9/30 | 20.3 | 36.4 | 55.5 | 54.4 | 55.0 | -- |
| Golden H. | GH1472E3 | 1.4 | 9/28 | 19.7 | 38.1 | 49.0 | 54.0 | 51.5 | -- |
| REA | R0632XF | 0.6 | 9/14 | 19.1 | 37.3 | 31.6 | 49.5 | 40.5 | -- |
| REA | R1042XF | 1.0 | 9/28 | 19.6 | 37.6 | 38.5 | 38.7 | 38.6 | -- |
| REA | R1350XF | 1.3 | 9/28 | 20.7 | 35.6 | 38.5 | 36.4 | 37.5 | -- |
| REA | RX0411 | 0.4 | 9/12 | 19.6 | 37.2 | 35.2 | 33.6 | 34.4 | 38.8 |
| REA | RX0721 | 0.7 | 9/20 | -- | -- | 31.6 | 49.8 | 40.7 | 46.1 |
| Syng NK | NK08-B7XF | 0.8 | 9/22 | 20.0 | 35.4 | 35.1 | 48.4 | 41.7 | -- |
| Syng NK | NK10-W8XF | 1.0 | 9/18 | 18.6 | 37.3 | 37.1 | 48.2 | 42.7 | -- |
| Syng NK | NK14-C7XF | 1.4 | 10/2 | 19.7 | 37.3 | 33.0 | 40.3 | 36.7 | -- |
| Syng NK | S14-U9X | 1.4 | 9/30 | 19.8 | 36.4 | 47.0 | 46.3 | 46.6 | -- |
| Mean | | 0.9 | 9/22 | 19.8 | 36.9 | 40.2 | 46.2 | 43.2 | 45.5 |
| CV % | | -- | 17.1 | -- | -- | 41.1 | 18.8 | 30.5 | -- |
| LSD 0.05 | | -- | 4.5 | -- | -- | 19.5 | 10.3 | 12.7 | -- |
| LSD 0.10 | | -- | 3.5 | -- | -- | 15.1 | 7.9 | 10.6 | -- |

Colfax Planted: May 11. Harvested: Oct 15 . Previous crop: Corn

Prosper Planted: May 17. Harvested: Oct 5 . Previous crop: Wheat

¹Maturity is date of 95% brown or tan pods

Table 6. 2021 NDSU Combined SCN-infested Soil Soybean non-GMO Variety Trial - Author, C. Miranda.

| Company/ Brand | Variety | Mat. Group | Maturity ¹ (date) | Seed Oil (%) | Seed Protein (%) | Seed Yield | | | |
|-------------------|-----------|------------|---------------------------------|-----------------|---------------------|-------------------|---------|-------------|------------|
| | | | | | | Colfax | Prosper | 2-site Avg. | 2-yr. Avg. |
| | | | | | | ------(bu/a)----- | | | |
| MS Tech. | XO 0311E | 0.3 | 9/10 | 19.5 | 38.1 | 59.0 | 44.4 | 51.7 | -- |
| MS Tech. | XO 0521E | 0.5 | 9/12 | 17.0 | 42.1 | 31.5 | 24.1 | 27.8 | -- |
| MS Tech. | XO 0731E | 0.7 | 9/25 | 19.8 | 36.8 | 67.0 | 46.3 | 56.6 | -- |
| MS Tech. | XO 1041E | 1.0 | 9/28 | 18.8 | 38.0 | 61.1 | 59.2 | 60.2 | -- |
| NDSU | ND Benson | 0.4 | 9/11 | 19.0 | 39.4 | 58.9 | 42.8 | 50.9 | 49.0 |
| NDSU | ND Dickey | 0.7 | 9/15 | 17.7 | 41.1 | 36.6 | 20.0 | 28.3 | 37.3 |
| Sevita | Skyline | 1.0 | 9/31 | 19.2 | 38.6 | 49.6 | 43.4 | 46.5 | 46.4 |
| Mean | | 0.6 | 9/12 | 18.7 | 39.2 | 52.0 | 40.0 | 46.0 | 44.2 |
| CV % | | -- | 1.6 | -- | -- | 15.1 | 19.6 | 17.1 | -- |
| LSD 0.05 | | -- | 2.7 | -- | -- | 9.6 | 9.6 | 6.6 | -- |
| LSD 0.10 | | -- | 2.2 | -- | -- | 7.4 | 7.4 | 5.1 | -- |

Colfax Planted: May 11. Harvested: Oct 15 . Previous crop: Corn

Prosper Planted: May 17. Harvested: Oct 5 . Previous crop: Wheat

¹Maturity is date of 95% brown or tan pods

Table 7. 2021 NDSU Enlist, GT27, RR and Xtend Soybean - Central Locations in North Dakota - Author, C. Miranda.

| Company/ Brand | Variety | Mat. Group | Maturity ¹ (date) | Seed Oil (%) | Seed Protein (%) | Seed Yield | | | |
|-------------------|------------|---------------|---------------------------------|--------------------|------------------------|-------------------|--------|-------------|------------|
| | | | | | | Arthur | Hatton | 2-site Avg. | 2-yr. Avg. |
| | | | | | | ------(bu/a)----- | | | |
| Dairyland | DSR-0660E | 0.6 | 9/23 | 20.2 | 35.3 | 35.0 | 66.7 | 50.8 | -- |
| Dyna-Gro | S04XF32 | 0.4 | 9/24 | 21.0 | 36.1 | 40.2 | 58.5 | 49.4 | -- |
| Dyna-Gro | S04XT91 | 0.4 | 9/20 | 20.7 | 36.1 | 29.9 | 73.3 | 51.6 | 58.5 |
| Dyna-Gro | S05EN82 | 0.5 | 9/23 | 19.7 | 38.2 | 34.3 | 61.9 | 48.1 | -- |
| Dyna-Gro | S07EN61 | 0.7 | 9/27 | 19.7 | 37.5 | 35.9 | 71.0 | 53.5 | 56.7 |
| Golden H. | GH0452E3 | 0.4 | 9/20 | 19.5 | 38.9 | 26.4 | 59.1 | 42.7 | -- |
| Golden H. | GH0502XF | 0.5 | 9/21 | 19.7 | 37.9 | 34.7 | 69.3 | 52.0 | -- |
| Golden H. | GH0543X | 0.5 | 9/21 | 19.7 | 37.4 | 26.4 | 69.3 | 47.9 | -- |
| Legacy | LS-0829E | 0.7 | 9/23 | 20.1 | 37.5 | 29.8 | 64.2 | 47.0 | -- |
| Legacy | LS042-21E | 0.4 | 9/19 | 21.9 | 34.6 | 33.5 | 57.3 | 45.4 | -- |
| Legacy | LS062-21E | 0.6 | 9/24 | 19.8 | 37.7 | 27.9 | 65.4 | 46.6 | -- |
| Legacy | LS072-21E | 0.7 | 9/23 | 18.4 | 38.4 | 29.9 | 64.2 | 47.0 | -- |
| LG Seeds | LGS0701XF | 0.7 | 9/23 | 19.2 | 37.5 | 37.0 | 62.5 | 49.8 | -- |
| P3 Genetics | 2106E | 0.6 | 9/23 | 19.5 | 38.4 | 33.7 | 64.8 | 49.2 | 55.7 |
| P3 Genetics | 2108E | 0.7 | 9/24 | 19.6 | 37.4 | 30.1 | 61.7 | 45.9 | -- |
| P3 Genetics | 2207E | 0.7 | 9/23 | 20.6 | 37.4 | 23.7 | 70.4 | 47.0 | -- |
| Peterson | 21XF07 | 0.7 | 9/21 | 19.8 | 37.6 | 33.9 | 64.3 | 49.1 | -- |
| Peterson | 22XF06 | 0.6 | 9/20 | 20.2 | 36.3 | 42.0 | 70.6 | 56.3 | -- |
| Proseed | EL20-73N | 0.7 | 9/26 | 19.9 | 36.7 | 33.9 | 68.1 | 51.0 | -- |
| Proseed | XF10-72N | 0.7 | 9/22 | 20.3 | 36.6 | 43.1 | 69.5 | 56.3 | -- |
| Proseed | XT20-40 | 0.4 | 9/21 | 21.3 | 35.5 | 40.4 | 56.2 | 48.3 | 57.2 |
| Proseed | XT80-20N | 0.2 | 9/19 | 19.9 | 36.3 | 30.2 | 61.7 | 46.0 | -- |
| REA | R0632XF | 0.6 | 9/21 | 19.5 | 36.9 | 38.4 | 65.5 | 52.0 | -- |
| REA | RX0411 | 0.4 | 9/18 | 20.7 | 36.3 | 34.8 | 53.3 | 44.1 | 52.7 |
| REA | RX0721 | 0.7 | 9/21 | 20.7 | 35.6 | 42.4 | 67.6 | 55.0 | 60.2 |
| Syng NK | NK009-T1XF | 0.9 | 9/15 | 21.1 | 36.0 | 27.2 | 55.7 | 41.4 | -- |
| Syng NK | NK02-M4XF | 0.2 | 9/14 | 21.6 | 35.6 | 34.7 | 53.7 | 44.2 | -- |
| Syng NK | NK04-G8E3 | 0.4 | 9/19 | 19.3 | 39.7 | 18.9 | 49.5 | 34.2 | -- |
| Syng NK | NK05-W3XF | 0.5 | 9/20 | 19.3 | 37.7 | 39.4 | 56.8 | 48.1 | -- |
| Syng NK | S04-Q7X | 0.4 | 9/20 | 20.4 | 37.4 | 42.8 | 65.6 | 54.2 | -- |
| Mean | | 0.6 | 9/22 | 20.1 | 37.0 | 33.7 | 63.3 | 48.5 | 56.8 |
| CV % | | -- | 5.8 | 4.6 | 3.1 | 27.1 | 11.9 | 17.2 | -- |
| LSD 0.05 | | -- | 1.7 | 1.9 | 2.3 | 12.5 | 10.3 | 8.0 | -- |
| LSD 0.10 | | -- | 1.3 | 1.6 | 1.9 | 9.7 | 8.0 | 6.3 | -- |

Arthur Planted: May 7. Harvested: Oct 1 . Previous crop: Corn

Hatton Planted: May 19. Harvested: Oct 5 . Previous crop: Turnip

¹Maturity is date of 95% brown or tan pods

Table 8. 2021 NDSU Conventional and Liberty Link Soybean, Central Locations in North Dakota - Author, C. Miranda.

| Company/ Brand | Variety | Mat. Group | Maturity ¹ (date) | Seed Oil (%) | Seed Protein (%) | Seed Yield | | | |
|-------------------|-------------|---------------|---------------------------------|--------------------|------------------------|-------------------|--------|-------------|------------|
| | | | | | | Arthur | Hatton | 2-site Avg. | 2-yr. Avg. |
| | | | | | | ------(bu/a)----- | | | |
| BASF | CZ 0419GTLL | 0.4 | 9/26 | 19.8 | 39.1 | 42.9 | 66.9 | 54.9 | -- |
| BASF | CZ 0611GTLL | 0.6 | 9/28 | 21.0 | 36.0 | 41.3 | 67.9 | 54.6 | -- |
| Legacy | LS020-20 | 0.2 | 9/12 | 20.5 | 36.9 | 32.3 | 50.0 | 41.1 | 44.7 |
| Legacy | LS040-21 | 0.4 | 9/18 | 20.2 | 37.9 | 39.2 | 45.2 | 42.2 | -- |
| MS Tech. | XO 0311E | 0.3 | 9/17 | 20.3 | 35.6 | 39.1 | 64.7 | 51.9 | -- |
| MS Tech. | XO 0521E | 0.5 | 9/24 | 19.5 | 37.1 | 48.9 | 66.2 | 57.5 | -- |
| MS Tech. | XO 0731E | 0.7 | 9/28 | 20.0 | 36.8 | 43.2 | 62.5 | 52.8 | -- |
| NDSU | ND Benson | 0.4 | 9/20 | 19.4 | 37.8 | 31.4 | 47.5 | 39.5 | 49.3 |
| NDSU | ND Dickey | 0.7 | 9/24 | 20.2 | 35.4 | 46.7 | 58.7 | 52.7 | 57.4 |
| NDSU | ND Rolette | 0.9 | 9/14 | 20.8 | 36.8 | 33.1 | 48.8 | 41.0 | 51.5 |
| Prograin | Asana | 0.6 | 9/24 | 20.4 | 37.8 | 32.2 | 54.0 | 43.1 | -- |
| Prograin | Marula | 0.6 | 9/25 | 20.0 | 37.4 | 42.7 | 57.6 | 50.2 | 49.4 |
| Richland | MK0249 | 0.2 | 9/18 | 19.2 | 36.4 | 32.7 | 45.4 | 39.1 | 43.4 |
| Richland | MK0603 | 0.6 | 9/24 | 18.6 | 37.0 | 34.3 | 52.7 | 43.5 | 50.3 |
| Sevita | Astor | 0.3 | 9/19 | 21.8 | 38.4 | 26.5 | 44.9 | 35.7 | 38.6 |
| Sevita | Panorama | 0.3 | 9/21 | 20.0 | 37.6 | 35.5 | 60.9 | 48.2 | 53.3 |
| Mean | | 0.5 | 9/22 | 20.1 | 37.1 | 37.6 | 55.9 | 46.7 | 48.7 |
| CV % | | -- | 5.6 | 3.6 | 2.6 | 22.2 | 12.4 | 16.6 | -- |
| LSD 0.05 | | -- | 1.7 | 1.5 | 2.0 | 12.4 | 11.7 | 9.3 | -- |
| LSD 0.10 | | -- | 1.3 | 1.3 | 1.7 | 9.6 | 9.8 | 7.8 | -- |

Arthur Planted: May 7. Harvested: Oct 1 . Previous crop: Corn

Hatton Planted: May 19. Harvested: Oct 5 . Previous crop: Turnip

¹Maturity is date of 95% brown or tan pods**Table 9. 2021 NDSU Conventional and Liberty Link Soybean, Southern Locations in North Dakota - Author, C. Miranda.**

| Company/ Brand | Variety | Mat. Group | Seed Oil (%) | Seed Protein (%) | Seed Yield | | | |
|-------------------|-------------|---------------|--------------------|------------------------|-------------------|--------|-------------|------------|
| | | | | | Lisbon | Milnor | 2-site Avg. | 2-yr. Avg. |
| | | | | | ------(bu/a)----- | | | |
| BASF | CZ 1171GTLL | 1.1 | 20.7 | 35.7 | 59.7 | 47.8 | 53.7 | -- |
| BASF | CZ 1331GTLL | 1.3 | 20.4 | 37.1 | 33.8 | 49.2 | 41.5 | -- |
| Brushvale | BS1146 | 1.3 | 19.6 | 37.9 | 55.2 | 39.6 | 47.4 | 43.1 |
| Brushvale | BS1282 | 1.1 | 21.0 | 39.1 | 52.1 | 42.9 | 47.5 | 47.1 |
| Brushvale | BS1512 | 1.3 | 20.5 | 36.7 | 55.0 | 46.0 | 50.5 | 50.7 |
| MS Tech. | XO 0731E | 0.7 | 21.1 | 36.1 | 61.1 | 39.3 | 50.2 | -- |
| MS Tech. | XO 1041E | 1.0 | 20.4 | 36.7 | 54.4 | 50.4 | 52.4 | -- |
| NDSU | ND Benson | 0.4 | 20.4 | 38.0 | 39.7 | 46.3 | 43.0 | 45.8 |
| NDSU | ND Dickey | 0.7 | 20.3 | 36.2 | 46.8 | 41.8 | 44.3 | 46.8 |
| NDSU | ND17009GT | 0.9 | 21.1 | 38.9 | 43.1 | 39.2 | 41.2 | -- |
| Prograin | Atena | 1.2 | 20.5 | 38.3 | 53.9 | 39.2 | 46.5 | 44.6 |
| Richland | MK0508 | 0.8 | 18.9 | 36.8 | 44.4 | 47.7 | 46.0 | -- |
| Richland | MK0603 | 0.7 | 18.2 | 38.6 | 46.1 | 42.5 | 44.3 | -- |
| Richland | MK1016 | 1.0 | 19.1 | 36.5 | 48.5 | 40.6 | 44.5 | 42.1 |
| Richland | MK146 | 1.1 | 19.8 | 37.5 | 53.9 | 43.9 | 48.9 | 51.3 |
| Richland | MK41 | 1.1 | 19.1 | 38.7 | 44.4 | 46.5 | 45.5 | 47.8 |
| Richland | MK808CN | 0.8 | 21.6 | 35.1 | 46.6 | 40.2 | 43.4 | 46.4 |
| Richland | MK9101 | 1.1 | 18.6 | 38.4 | 36.2 | 41.1 | 38.6 | -- |
| Sevita | Skyline | 1.0 | 20.8 | 37.4 | 44.8 | 46.7 | 45.7 | 47.3 |
| Mean | | 1.0 | 20.1 | 37.4 | 48.4 | 43.7 | 46.1 | 46.6 |
| CV % | | -- | 2.6 | 3.3 | 11.9 | 20.0 | 16.0 | -- |
| LSD 0.05 | | -- | 1.1 | 2.5 | 8.1 | 12.1 | 8.6 | -- |
| LSD 0.10 | | -- | 0.9 | 2.1 | 6.3 | 9.4 | 7.2 | -- |

Lisbon Planted: May 13. Harvested: Oct 3. Previous crop: Corn. Milnor Planted: May 13. Harvested: Oct 2 . Previous crop: Fallow.

Table 10. 2021 NDSU Enlist, GT27, RR and Xtend Soybean, Southern Locations in North Dakota - Author, C. Miranda.

| Company/ Brand | Variety | Mat. Group | Seed Oil (%) | Seed Protein (%) | Seed Yield | | | |
|-------------------|-----------|---------------|--------------------|------------------------|-------------------|--------|-------------|------------|
| | | | | | Lisbon | Milnor | 2-site Avg. | 2-yr. Avg. |
| | | | | | ------(bu/a)----- | | | |
| AgriGold | G0702XF | 0.7 | 20.4 | 36.6 | 43.8 | 37.0 | 40.4 | -- |
| AgriGold | G0801E3 | 0.8 | 21.5 | 35.2 | 57.9 | 47.0 | 52.4 | -- |
| Dahlman | 1213E3N | 1.3 | 19.9 | 37.7 | 42.2 | 44.6 | 43.4 | -- |
| Dahlman | 7210XF | 1.0 | 21.0 | 36.0 | 44.3 | 41.6 | 43.0 | -- |
| Dahlman | 7213XF | 1.3 | 21.8 | 35.3 | 52.9 | 43.8 | 48.3 | -- |
| Dairyland | DSR-0847E | 0.8 | 20.6 | 36.8 | 52.9 | 43.9 | 48.4 | 47.2 |
| Dairyland | DSR-0920E | 0.9 | 20.9 | 36.0 | 55.6 | 41.1 | 48.4 | 47.8 |
| Dairyland | DSR-1010E | 1.0 | 20.0 | 37.6 | 42.6 | 36.5 | 39.5 | -- |
| Dairyland | DSR-1290E | 1.2 | 22.2 | 34.0 | 61.3 | 49.1 | 55.2 | -- |
| Dyna-Gro | S09EN41 | 0.9 | 19.7 | 36.9 | 54.7 | 28.1 | 41.4 | 44.6 |
| Dyna-Gro | S09XF62 | 0.9 | 20.8 | 36.3 | 52.9 | 40.0 | 46.4 | -- |
| Dyna-Gro | S12EN72 | 1.2 | 20.8 | 36.4 | 65.1 | 37.3 | 51.2 | -- |
| Dyna-Gro | S12XF92 | 1.2 | 21.1 | 35.9 | 58.8 | 43.1 | 50.9 | -- |
| Golden H. | GH0822XF | 0.8 | 20.5 | 36.7 | 60.8 | 42.9 | 51.8 | -- |
| Golden H. | GH0842E3 | 0.8 | 20.9 | 35.5 | 45.0 | 42.1 | 43.5 | -- |
| Golden H. | GH1032XF | 1.0 | 20.8 | 36.2 | 45.2 | 42.1 | 43.7 | -- |
| Golden H. | GH1362E3 | 1.3 | 20.2 | 37.0 | 48.9 | 54.7 | 51.8 | 48.7 |
| Legacy | LS-1320N | 1.3 | 20.6 | 36.7 | 53.6 | 43.3 | 48.4 | -- |
| Legacy | LS082-20E | 0.8 | 21.2 | 36.0 | 50.3 | 42.3 | 46.3 | -- |
| Legacy | LS102-20E | 1.0 | 20.2 | 36.9 | 65.1 | 37.4 | 51.3 | 47.1 |
| Legacy | LS120-21 | -- | 19.7 | 37.1 | 54.9 | 36.3 | 45.6 | -- |
| Legacy | LS122-21E | 1.2 | 21.5 | 35.4 | 68.1 | 41.6 | 54.9 | -- |
| LG Seeds | LGS0822E3 | 0.8 | 21.3 | 36.0 | 49.0 | 41.8 | 45.4 | 45.4 |
| LG Seeds | LGS1203E3 | 1.2 | 20.7 | 36.6 | 55.0 | 41.9 | 48.5 | -- |
| P3 Genetics | 2013E | 1.3 | 20.3 | 36.5 | 41.9 | 42.2 | 42.1 | 45.0 |
| P3 Genetics | 2109E | 0.9 | 21.2 | 36.6 | 51.9 | 47.2 | 49.6 | -- |
| P3 Genetics | 2110E | 1.0 | 19.9 | 37.5 | 50.6 | 44.2 | 47.4 | 41.6 |
| P3 Genetics | 2212E | 1.2 | 21.0 | 35.9 | 57.5 | 49.4 | 53.5 | -- |
| Peterson | 22XF10 | 1.0 | 21.1 | 35.7 | 46.0 | 38.8 | 42.4 | -- |
| Peterson | 22XF12 | 1.2 | 21.8 | 34.6 | 58.6 | 44.4 | 51.5 | -- |
| Proseed | EL21-03N | 1.0 | 20.2 | 36.7 | 60.2 | 44.2 | 52.2 | 45.0 |
| Proseed | EL21-23N | 1.2 | 22.2 | 34.5 | 50.7 | 47.8 | 49.2 | 49.7 |
| REA | R1042XF | 1.0 | 21.2 | 36.1 | 55.4 | 39.5 | 47.5 | -- |
| REA | R1350XF | 1.3 | 21.2 | 35.6 | 68.4 | 43.0 | 55.7 | -- |
| Syng NK | NK08-B7XF | 0.8 | 20.0 | 37.7 | 53.0 | 42.2 | 47.6 | -- |
| Syng NK | NK10-W8XF | 1.0 | 20.2 | 36.7 | 56.5 | 31.5 | 44.0 | -- |
| Syng NK | NK14-C7XF | 1.3 | 20.7 | 36.1 | 58.3 | 45.3 | 51.8 | -- |
| Syng NK | S14-U9X | 1.3 | 20.9 | 36.0 | 48.1 | 52.7 | 50.4 | -- |
| Mean | | 1.1 | 20.8 | 36.2 | 53.6 | 42.4 | 48.0 | 46.2 |
| CV % | | -- | 2.5 | 2.0 | 25.0 | 15.5 | 22.0 | -- |
| LSD 0.05 | | -- | 1.1 | 1.5 | 18.2 | 8.9 | 12.1 | -- |
| LSD 0.10 | | -- | 0.9 | 1.2 | 14.2 | 6.9 | 10.2 | -- |

Lisbon Planted: May 13. Harvested: Oct 3 . Previous crop: Corn

Milnor Planted: May 13. Harvested: Oct 2 . Previous crop: Fallow

Table 11. 2021 Soybean - Dryland, Enlist, GT27, RR and Xtend - Carrington - Authors, M. Ostlie, B. Schatz and G. Endres (1 of 2).

| Company/ Brand | Variety | Maturity ¹ (date) | Pod Ht (inch) | Plant Ht (inch) | Plant Lodge ² (0-9) | Seeds/ Pound | Test Weight (lb/bu) | Seed Oil (%) | Seed Protein (%) | Seed Yield ------(bu/a)----- | | |
|-------------------|-------------|---------------------------------|---------------------|-----------------------|--------------------------------------|-----------------|---------------------------|--------------------|------------------------|---------------------------------|------------|-----------|
| | | | | | | | | | | 2021 | 2-yr. Avg. | 3-yr Avg. |
| Champion | 03X30N | 9/19 | 2 | 20 | 2 | 2,940 | 57.4 | 18.5 | 34.2 | 22.6 | -- | -- |
| Champion | 052X | 9/17 | 2 | 21 | 2 | 2,861 | 57.2 | 19.8 | 33.9 | 25.3 | -- | -- |
| Champion | 0631XL | 9/14 | 2 | 21 | 1 | 3,377 | 57.4 | 20.0 | 32.7 | 30.0 | -- | -- |
| Champion | 0692XL | 9/15 | 4 | 22 | 0 | 3,104 | 57.3 | 19.9 | 34.0 | 28.3 | -- | -- |
| Dairyland | DSR-0645E | 9/12 | 4 | 22 | 2 | 2,858 | 56.8 | 20.2 | 32.8 | 26.7 | 42.7 | -- |
| Dairyland | DSR-0660E | 9/15 | 3 | 19 | 1 | 2,960 | 57.3 | 19.3 | 33.6 | 26.5 | -- | -- |
| Dairyland | DSR-0847E | 9/22 | 3 | 19 | 1 | 2,396 | 56.6 | 19.0 | 35.3 | 33.3 | 45.1 | 52.9 |
| DynaGro | S04XF32 | 9/15 | 4 | 28 | 1 | 2,910 | 57.6 | 20.1 | 33.9 | 30.7 | -- | -- |
| DynaGro | S04XT91 | 9/12 | 4 | 19 | 1 | 3,186 | 57.5 | 19.8 | 34.3 | 24.6 | 44.0 | -- |
| DynaGro | S05EN82 | 9/14 | 2 | 20 | 2 | 3,031 | 57.3 | 19.6 | 34.3 | 29.4 | -- | -- |
| Integra | 40201N | 9/11 | 2 | 18 | 2 | 2,985 | 57.0 | 19.7 | 33.9 | 24.7 | 40.9 | -- |
| Integra | 40300N | 9/10 | 2 | 19 | 2 | 3,401 | 57.2 | 19.4 | 33.8 | 26.0 | 44.8 | -- |
| Integra | 50309N | 9/14 | 2 | 21 | 1 | 3,171 | 57.8 | 19.4 | 32.9 | 29.3 | 46.3 | 53.0 |
| Integra | 70212 XF | 9/9 | 3 | 24 | 1 | 3,271 | 57.2 | 20.8 | 33.2 | 24.4 | -- | -- |
| Integra | 70622N | 9/15 | 3 | 21 | 0 | 3,312 | 58.0 | 18.9 | 34.6 | 30.2 | -- | -- |
| Legacy | LS-0320N | 9/10 | 4 | 19 | 2 | 3,544 | 56.5 | 19.8 | 33.3 | 26.9 | 44.2 | -- |
| Legacy | LS042-21E | 9/12 | 3 | 22 | 1 | 2,919 | 56.9 | 20.1 | 32.9 | 27.5 | -- | -- |
| Legacy | LS-0429 | 9/11 | 3 | 22 | 0 | 3,613 | 57.5 | 19.8 | 34.3 | 26.7 | 44.1 | -- |
| Legacy | LS044-21 XF | 9/13 | 4 | 28 | 1 | 2,908 | 57.5 | 20.1 | 33.5 | 30.2 | -- | -- |
| Legacy | LS062-21E | 9/15 | 3 | 17 | 1 | 2,997 | 57.2 | 19.4 | 34.9 | 26.9 | -- | -- |
| Legacy | LS072-21E | 9/15 | 4 | 20 | 1 | 2,834 | 57.8 | 18.7 | 34.8 | 27.9 | -- | -- |
| LG Seeds | LGS0618XF | 9/15 | 4 | 18 | 2 | 3,501 | 57.6 | 19.8 | 32.3 | 30.1 | -- | -- |
| LG Seeds | LGS0701XF | 9/13 | 3 | 22 | 1 | 3,379 | 57.5 | 19.7 | 33.6 | 29.0 | -- | -- |
| NDSU | ND17009GT | 9/8 | 2 | 19 | 1 | 3,447 | 58.6 | 19.9 | 34.5 | 20.4 | 37.0 | 43.4 |
| NDSU | ND18008GT | 8/28 | 1 | 18 | 1 | 4,054 | 57.9 | 20.6 | 33.3 | 18.5 | 38.9 | 42.6 |
| NDSU | ND21008GT20 | 8/28 | 2 | 17 | 1 | 4,209 | 58.0 | 20.8 | 32.9 | 17.8 | 36.8 | -- |
| NDSU | ND2108GT73 | 9/17 | 3 | 18 | 0 | 3,365 | 57.9 | 20.7 | 32.0 | 24.3 | 42.4 | 46.6 |
| P3 Genetics | 2106E | 9/15 | 3 | 19 | 1 | 3,001 | 57.2 | 19.6 | 34.7 | 28.8 | 44.3 | -- |
| P3 Genetics | 2207E | 9/14 | 3 | 19 | 2 | 2,856 | 57.7 | 18.6 | 35.3 | 25.2 | -- | -- |
| Peterson | 20X05 | 9/15 | 2 | 18 | 2 | 2,941 | 57.8 | 19.9 | 34.4 | 27.5 | 44.7 | 51.4 |
| Peterson | 21XF07 | 9/14 | 3 | 22 | 1 | 3,254 | 57.7 | 19.2 | 34.3 | 31.9 | -- | -- |
| Peterson | 22XF03 | 9/5 | 4 | 26 | 0 | 3,268 | 57.2 | 20.6 | 34.1 | 25.2 | -- | -- |
| Peterson | 22XF06 | 9/13 | 3 | 22 | 1 | 3,020 | 57.8 | 18.8 | 35.0 | 28.9 | -- | -- |
| Proseed | EL80-23 | 9/8 | 3 | 19 | 1 | 4,183 | 56.9 | 19.2 | 34.2 | 24.0 | -- | -- |
| Proseed | EL90-33N | 9/9 | 4 | 18 | 1 | 3,410 | 56.9 | 19.6 | 33.4 | 18.3 | -- | -- |
| Proseed | XF10-32 | 9/7 | 3 | 24 | 0 | 3,036 | 57.2 | 20.6 | 33.9 | 23.8 | -- | -- |
| Proseed | XT20-40 | 9/13 | 3 | 22 | 1 | 3,219 | 57.4 | 20.0 | 33.5 | 23.8 | -- | -- |
| Proseed | XT80-20N | 9/17 | 2 | 22 | 1 | 3,191 | 57.6 | 19.4 | 32.6 | 27.7 | 44.0 | 49.8 |
| REA | R0632XF | 9/15 | 2 | 19 | 0 | 3,303 | 57.6 | 18.8 | 35.1 | 28.0 | -- | -- |
| REA | RX0411 | 9/13 | 4 | 24 | 0 | 2,980 | 57.8 | 19.7 | 33.7 | 24.2 | 44.3 | -- |
| REA | RX0721 | 9/14 | 4 | 26 | 1 | 3,279 | 57.4 | 20.2 | 32.5 | 31.5 | 50.2 | -- |
| REA | R0112XF | 9/8 | 3 | 24 | 1 | 3,226 | 57.2 | 20.5 | 33.8 | 21.6 | -- | -- |
| Stine | 03EB02 | 9/5 | 3 | 20 | 2 | 3,443 | 57.1 | 19.6 | 33.5 | 21.7 | -- | -- |
| Stine | 05EB23 | 9/13 | 3 | 22 | 2 | 2,843 | 56.9 | 19.9 | 33.6 | 25.4 | -- | -- |
| Stine | 06EC23 | 9/14 | 3 | 18 | 2 | 2,927 | 57.3 | 19.6 | 34.7 | 27.5 | -- | -- |
| Stine | 07EA36 | 9/15 | 4 | 20 | 1 | 2,838 | 56.5 | 19.6 | 34.1 | 28.4 | -- | -- |
| Stine | 01EA63 | 9/4 | 4 | 21 | 1 | 3,864 | 57.1 | 19.0 | 34.8 | 23.5 | -- | -- |
| Syng NK | NK02-M4XF | 9/12 | 2 | 25 | 0 | 3,495 | 55.5 | 20.8 | 32.2 | 21.9 | -- | -- |
| Mean | | 9/12 | 3 | 21 | 1 | 3,177 | 57.4 | 19.6 | 33.9 | 26.4 | 43.8 | 50.0 |
| CV % | | 1.6 | 39 | 12.7 | 64 | 4.8 | 0.6 | 2.2 | 2.6 | 14.8 | -- | -- |
| LSD 0.05 | | 2.7 | 1.6 | 3.7 | 0.8 | 209 | 0.5 | 0.6 | 1.2 | 5.4 | -- | -- |
| LSD 0.10 | | 2.2 | 1.4 | 3.1 | 0.7 | 178 | 0.4 | 0.5 | 1.0 | 4.5 | -- | -- |

Table 11. 2021 Soybean - Dryland, Enlist, GT27, RR and Xtend - Carrington - Authors, M. Ostlie, B. Schatz and G. Endres (2 of 2).

| Company/ Brand | Variety | Maturity ¹ (date) | Pod Ht (inch) | Plant Ht (inch) | Plant Lodge ² (0-9) | Seeds/ Pound | Test Weight (lb/bu) | Seed Oil (%) | Seed Protein (%) | Seed Yield | | |
|-------------------|---------------|---------------------------------|---------------------|-----------------------|--------------------------------------|-----------------|---------------------------|--------------------|------------------------|------------|------------|-----------|
| | | | | | | | | | | 2021 | 2-yr. Avg. | 3-yr Avg. |
| Syng NK | NK04-G8E3 | 9/11 | 3 | 21 | 1 | 2,894 | 57.3 | 18.7 | 35.8 | 23.8 | -- | -- |
| Syng NK | NK05-W3XF | 9/12 | 4 | 23 | 2 | 3,273 | 57.8 | 19.6 | 33.4 | 29.6 | -- | -- |
| Syng NK | S04-Q7X | 9/14 | 3 | 22 | 1 | 2,882 | 57.9 | 19.5 | 34.9 | 29.3 | 47.1 | -- |
| Syng NK | S05-N5X | 9/14 | 4 | 20 | 0 | 3,042 | 57.5 | 20.2 | 32.6 | 30.2 | 51.7 | 60.0 |
| Thunder | SB8104N | 9/13 | 4 | 20 | 1 | 3,107 | 57.4 | 20.0 | 33.9 | 24.7 | 44.0 | -- |
| Thunder | TE7207 | 9/19 | 4 | 20 | 1 | 3,027 | 57.6 | 19.1 | 33.4 | 28.8 | -- | -- |
| Thunder | TX8206N | 9/13 | 2 | 17 | 1 | 2,905 | 57.5 | 18.9 | 34.7 | 27.2 | -- | -- |
| Thunder | TX8207N | 9/13 | 4 | 22 | 1 | 3,330 | 57.8 | 18.7 | 35.0 | 27.5 | -- | -- |
| Thunder | SB8903N | 9/13 | 2 | 22 | 2 | 3,273 | 57.8 | 19.5 | 32.8 | 27.9 | 43.1 | 50.3 |
| U of M | MCH13R-117054 | 9/23 | 5 | 22 | 1 | 2,444 | 56.4 | 18.0 | 36.0 | 25.1 | -- | -- |
| Mean | | 9/12 | 3 | 21 | 1 | 3,177 | 57.4 | 19.6 | 33.9 | 26.4 | 43.8 | 50.0 |
| CV % | | 1.6 | 39 | 12.7 | 64 | 4.8 | 0.6 | 2.2 | 2.6 | 14.8 | -- | -- |
| LSD 0.05 | | 2.7 | 1.6 | 3.7 | 0.8 | 209 | 0.5 | 0.6 | 1.2 | 5.4 | -- | -- |
| LSD 0.10 | | 2.2 | 1.4 | 3.1 | 0.7 | 178 | 0.4 | 0.5 | 1.0 | 4.5 | -- | -- |

Planted: May 14. Harvested: Sept. 27. Previous crop: barley.

¹Maturity is date of 95% brown or tan pods²Lodging: 0-none, 9-lying flat on the ground.**Table 12. 2021 Soybean - Irrigated, Conventional - Carrington - Authors, M. Ostlie, B. Schatz, H. Burgard and M. Hafner.**

| Company/ Brand | Variety | Mat. Group | Maturity ¹ (date) | Pod Ht (inch) | Plant Ht (inch) | Plant Lodge ² (0-9) | Seeds/ Pound | Test Weight (lb/bu) | Seed Oil (%) | Seed Protein (%) | Seed Yield | | |
|-------------------|-------------|---------------|---------------------------------|---------------------|-----------------------|--------------------------------------|-----------------|---------------------------|--------------------|------------------------|------------|------------|-----------|
| | | | | | | | | | | | 2021 | 2-yr. Avg. | 3-yr Avg. |
| NDSU | ND Rolette | 00.9 | 9/11 | 4 | 31 | 1 | 3,692 | 58.0 | 20.0 | 34.7 | 61.1 | 61.3 | -- |
| NDSU | ND Benson | 0.4 | 9/18 | 5 | 31 | 1 | 3,342 | 58.0 | 19.5 | 36.0 | 60.5 | 60.6 | 58.5 |
| NDSU | ND Dickey | 0.7 | 9/20 | 5 | 31 | 2 | 2,749 | 57.9 | 19.4 | 34.2 | 72.0 | 67.4 | 66.2 |
| NDSU | ND Stutsman | 0.8 | 9/21 | 4 | 35 | 2 | 2,987 | 58.1 | 19.7 | 33.5 | 72.7 | 66.7 | 64.9 |
| Sevita | Panorama | 0.3 | 9/16 | 3 | 32 | 3 | 2,843 | 58.1 | 18.9 | 36.3 | 56.1 | 58.4 | 58.0 |
| Mean | | | 9/17 | 4 | 32 | 2 | 3,123 | 58.0 | 19.5 | 34.9 | 64.5 | 62.9 | 61.9 |
| CV % | | | 0.8 | 21 | 7.8 | 36 | 4.9 | 0.8 | 1.4 | 1.2 | 8.8 | -- | -- |
| LSD 0.05 | | | 1.5 | 1.4 | 3.7 | 1.0 | 231 | 0.7 | 0.4 | 0.6 | 8.6 | -- | -- |
| LSD 0.10 | | | 1.2 | 1.1 | 3.1 | 0.8 | 190 | 0.6 | 0.3 | 0.5 | 7.1 | -- | -- |

Planted: May 17. Harvested: Sept. 29. Previous crop: field pea.

¹Maturity is date of 95% brown or tan pods.²Lodging: 0-none, 9-lying flat on the ground.

Table 13. 2021 Soybean - Irrigated, Enlist, GT27, RR and Xtend - Carrington - Authors, M. Ostlie, B. Schatz, H. Burgard and M. Hafner.

| Company/ Brand | Variety | Mat. Group | Maturity ¹ (date) | Pod Ht (inch) | Plant Ht (inch) | Plant Lodge ² (0-9) | Seeds/ Pound (seeds) | Test Weight (lb/bu) | Seed Oil (%) | Seed Protein (%) | Seed Yield 2021 2-yr. Avg. ------(bu/a)----- | |
|-------------------|-------------|---------------|---------------------------------|---------------------|-----------------------|--------------------------------------|----------------------------|---------------------------|--------------------|------------------------|--|------|
| Dairyland | DSR-0660E | 0.6 | 9/18 | 6 | 39 | 2 | 2,808 | 57.2 | 18.8 | 33.9 | 58.8 | -- |
| Dairyland | DSR-0847E | 0.8 | 9/20 | 7 | 38 | 2 | 2,701 | 57.0 | 19.4 | 34.1 | 59.5 | 57.5 |
| DynaGro | S04XF32 | 0.4 | 9/21 | 5 | 50 | 6 | 2,699 | 56.9 | 19.9 | 33.8 | 57.3 | -- |
| DynaGro | S04XT91 | 0.4 | 9/14 | 7 | 40 | 2 | 2,678 | 57.0 | 20.1 | 33.1 | 58.4 | 63.1 |
| DynaGro | S05EN82 | 0.5 | 9/16 | 6 | 36 | 1 | 2,856 | 55.8 | 19.1 | 35.2 | 52.6 | -- |
| Legacy | LS-0320N | 0.3 | 9/12 | 7 | 39 | 3 | 3,220 | 55.5 | 19.2 | 33.9 | 57.2 | 60.9 |
| Legacy | LS042-21E | 0.4 | 9/14 | 6 | 39 | 4 | 2,794 | 55.4 | 19.9 | 33.4 | 55.9 | -- |
| Legacy | LS-0429 | 0.4 | 9/18 | 4 | 42 | 4 | 2,841 | 55.9 | 19.2 | 36.0 | 53.4 | 56.7 |
| Legacy | LS044-21 XF | 0.4 | 9/20 | 6 | 49 | 5 | 2,721 | 57.0 | 19.8 | 33.8 | 59.0 | -- |
| Legacy | LS062-21E | 0.6 | 9/15 | 6 | 34 | 2 | 2,839 | 55.2 | 19.0 | 35.4 | 56.2 | -- |
| Legacy | LS072-21E | 0.7 | 9/19 | 7 | 40 | 2 | 2,697 | 57.3 | 18.9 | 34.1 | 58.0 | -- |
| LG Seeds | LGS0618XF | 0.6 | 9/19 | 5 | 37 | 2 | 2,857 | 57.1 | 19.2 | 36.0 | 54.5 | -- |
| LG Seeds | LGS0701XF | 0.7 | 9/20 | 6 | 42 | 4 | 2,681 | 56.9 | 19.0 | 34.0 | 65.0 | -- |
| NDSU | ND17009GT | 00.9 | 9/12 | 4 | 40 | 5 | 2,922 | 58.9 | 19.0 | 37.0 | 50.8 | 55.2 |
| NDSU | ND18008GT | 00.8 | 9/5 | 3 | 36 | 2 | 3,461 | 57.0 | 19.0 | 36.1 | 42.7 | 50.9 |
| NDSU | ND21008GT20 | 00.8 | 9/5 | 3 | 38 | 5 | 3,371 | 56.9 | 18.7 | 35.7 | 51.1 | -- |
| NDSU | ND2108GT73 | 0.8 | 9/25 | 6 | 44 | 4 | 3,009 | 57.4 | 19.4 | 34.2 | 56.2 | -- |
| Proseed | EL80-23 | 0.2 | 9/9 | 5 | 39 | 3 | 3,412 | 55.7 | 18.4 | 35.4 | 48.4 | -- |
| Proseed | EL90-33N | 0.3 | 9/11 | 5 | 38 | 3 | 3,316 | 55.7 | 19.2 | 34.1 | 55.9 | -- |
| Proseed | XF10-30 | 0.3 | 9/13 | 4 | 44 | 4 | 2,731 | 56.5 | 20.2 | 34.1 | 59.1 | -- |
| Proseed | XT20-40 | 0.4 | 9/13 | 5 | 41 | 3 | 2,688 | 56.9 | 20.0 | 33.9 | 54.8 | -- |
| Proseed | XT80-20N | 0.2 | 9/14 | 4 | 42 | 4 | 3,189 | 56.7 | 19.5 | 33.0 | 60.2 | 59.9 |
| REA | R0112XF | 0.1 | 9/15 | 4 | 47 | 4 | 2,702 | 56.5 | 19.9 | 34.2 | 50.7 | -- |
| REA | R0632XF | 0.6 | 9/16 | 6 | 37 | 1 | 3,245 | 57.2 | 19.1 | 34.2 | 54.3 | -- |
| REA | RX0411 | 0.4 | 9/18 | 5 | 49 | 3 | 2,734 | 56.9 | 20.2 | 32.5 | 54.8 | 56.6 |
| REA | RX0721 | 0.7 | 9/18 | 5 | 43 | 2 | 2,869 | 57.0 | 19.7 | 33.5 | 62.9 | 64.6 |
| Mean | | | 9/16 | 5 | 41 | 3 | 2,925 | 56.7 | 19.4 | 34.4 | 55.7 | 58.4 |
| CV % | | | 1.7 | 23 | 7.5 | 44.3 | 3.7 | 0.6 | 1.5 | 1.3 | 10.3 | -- |
| LSD 0.05 | | | 2.9 | 1.7 | 4.4 | 1.9 | 152 | 0.5 | 0.4 | 0.6 | 8.1 | -- |
| LSD 0.10 | | | 2.4 | 1.4 | 3.6 | 1.6 | 127 | 0.4 | 0.3 | 0.5 | 6.8 | -- |

Planted: May 17. Harvested: Oct. 4. Previous crop: field pea.

¹Maturity is date of 95% brown or tan pods.²Lodging: 0-none, 9-lying flat on the ground.

Table 14. 2021 Soybean - Dryland, Conventional - Carrington - Authors, M. Ostlie, B. Schatz and E. Aberle.

| Company/ Brand | Variety | Mat. Group | Maturity ¹ (date) | Pod Ht (inch) | Plant Ht (inch) | Plant Lodge (0-9) | Seeds/ Pound | Test Weight (lb/bu) | Seed Oil (%) | Seed Protein (%) | Seed Yield | |
|-------------------|-------------|---------------|---------------------------------|---------------------|--------------------|-------------------------|-----------------|---------------------------|--------------------|------------------------|------------|-----------------------------------|
| | | | | | | | | | | | 2021 | 3-yr. Avg. -----(bu/a)----- |
| NDSU | ND Benson | 0.4 | 9/6 | 3 | 16 | 0 | 2,880 | 57.0 | 17.7 | 38.8 | 16.2 | 39.5 |
| NDSU | ND Dickey | 0.7 | 9/21 | 3 | 17 | 2 | 2,500 | 56.4 | 18.4 | 37.3 | 22.2 | 43.4 |
| NDSU | ND Rolette | 00.9 | 9/4 | 3 | 17 | 0 | 4,533 | 56.7 | 18.9 | 35.9 | 14.5 | 36.7 |
| NDSU | ND Stutsman | 0.8 | 9/15 | 4 | 21 | 1 | 3,401 | 56.7 | 19.6 | 34.6 | 18.2 | 44.9 |
| Prograin | Asana | 0.6 | 9/29 | 4 | 19 | 1 | 2,604 | 57.6 | 18.5 | 38.1 | 19.9 | -- |
| Prograin | Marula | 0.6 | 9/27 | 4 | 23 | 0 | 2,541 | 56.9 | 18.8 | 36.5 | 22.7 | -- |
| Richland | MK0249 | 0.2 | 9/22 | 2 | 16 | 0 | 4,379 | 57.1 | 17.5 | 36.7 | 14.0 | 34.3 |
| Richland | MK0508 | 0.8 | 9/25 | 4 | 17 | 0 | 3,855 | 57.5 | 16.5 | 38.5 | 16.9 | 32.4 |
| Richland | MK0603 | 0.6 | 9/27 | 4 | 19 | 1 | 3,815 | 57.3 | 15.3 | 39.6 | 20.4 | 31.4 |
| Richland | MK808CN | 0.8 | 9/29 | 3 | 18 | 1 | 2,735 | 57.2 | 18.4 | 36.6 | 19.4 | 36.7 |
| Sevita | Panorama | 0.3 | 9/13 | 4 | 17 | 1 | 2,865 | 57.7 | 17.4 | 39.2 | 9.9 | 36.2 |
| Mean | | | 9/20 | 4 | 18 | 1 | 3,282 | 57.1 | 17.9 | 37.4 | 17.7 | 37.3 |
| CV % | | | 2.5 | 27 | 11.1 | 85 | 6.1 | 0.5 | 1.6 | 1.5 | 17.3 | -- |
| LSD 0.05 | | | 4.4 | 1.4 | 2.8 | 0.7 | 293 | 0.4 | 0.4 | 0.8 | 4.4 | -- |
| LSD 0.10 | | | 3.6 | 1.1 | 2.3 | 0.5 | 244 | 0.4 | 0.3 | 0.7 | 3.7 | -- |

Planted: May 21. Harvested: Aug. 16. Previous crop: spring wheat.

¹Maturity is date of 95% brown or tan pods.

Table 15. 2021 Soybean - Enlist, GT27, RR and Xtend - Dazey (Carrington REC) - Authors, M. Ostlie, B. Schatz and T. Indergaard.

| Company/ Brand | Variety | Mat. Group | Maturity ¹ (date) | Pod Ht (inch) | Plant Ht (inch) | Plant Lodge ² (0-9) | Test Weight (lb/bu) | Seed Oil (%) | Seed Protein (%) | Seeds/ Pound | Seed Yield | | |
|-------------------|-------------|---------------|---------------------------------|---------------------|-----------------------|--------------------------------------|---------------------------|--------------------|------------------------|-----------------|------------|---------------|---------------|
| | | | | | | | | | | | 2021 | 2-yr. Avg. | 3-yr. Avg. |
| Dairyland | DSR-0847E | 0.8 | 9/4 | 3 | 23 | 0 | 57.3 | 19.9 | 34.7 | 2,863 | 47.2 | 48.8 | 48.2 |
| Dairyland | DSR-0920E | 0.9 | 9/4 | 4 | 25 | 0 | 56.7 | 19.9 | 34.2 | 2,750 | 49.4 | 50.5 | -- |
| Dairyland | DSR-1010E | 1.0 | 9/6 | 4 | 25 | 0.3 | 57.5 | 18.8 | 36.1 | 2,760 | 44.0 | -- | -- |
| Dairyland | DSR-1290E | 1.2 | 9/4 | 3 | 24 | 0 | 57.6 | 21.0 | 32.2 | 2,640 | 50.1 | -- | -- |
| DynaGro | S05EN82 | 0.5 | 8/31 | 3 | 21 | 0 | 56.4 | 20.4 | 33.9 | 3,256 | 45.3 | -- | -- |
| DynaGro | S07EN61 | 0.7 | 9/2 | 4 | 25 | 0 | 57.1 | 20.4 | 33.4 | 2,681 | 43.8 | 49.6 | -- |
| DynaGro | S09EN41 | 0.9 | 9/7 | 4 | 22 | 0.3 | 57.2 | 18.7 | 36.7 | 2,711 | 41.6 | 45.9 | -- |
| DynaGro | SX21906XF | 0.6 | 9/1 | 3 | 23 | 0 | 57.4 | 19.6 | 34.6 | 3,149 | 46.1 | -- | -- |
| Legacy | LS062-21E | 0.6 | 8/30 | 3 | 19 | 0 | 56.3 | 20.3 | 34.2 | 3,383 | 42.5 | -- | -- |
| Legacy | LS072-21E | 0.7 | 9/3 | 3 | 21 | 0 | 57.2 | 19.5 | 34.6 | 2,891 | 39.7 | -- | -- |
| Legacy | LS082-20E | 0.8 | 9/1 | 4 | 25 | 0.3 | 56.8 | 21.0 | 33.7 | 3,115 | 48.6 | 50.3 | -- |
| Legacy | LS094-21 XF | 0.9 | 9/2 | 4 | 22 | 0 | 56.8 | 20.5 | 33.9 | 3,054 | 43.5 | -- | -- |
| Legacy | LS102-20E | 1.0 | 9/5 | 4 | 22 | 0 | 57.4 | 18.7 | 36.3 | 2,785 | 40.3 | 43.5 | -- |
| Legacy | LS122-21E | 1.2 | 9/3 | 3 | 25 | 0 | 57.1 | 21.1 | 32.0 | 2,780 | 48.8 | -- | -- |
| LG Seeds | LGS0618XF | 0.6 | 9/2 | 3 | 23 | 0.3 | 57.2 | 20.1 | 35.7 | 2,930 | 43.1 | -- | -- |
| LG Seeds | LGS0701XF | 0.7 | 8/31 | 3 | 25 | 0 | 57.2 | 20.1 | 33.8 | 3,085 | 44.4 | -- | -- |
| NDSU | ND17009GT | 0.9 | 8/21 | 4 | 25 | 0 | 58.3 | 20.0 | 35.9 | 3,319 | 38.4 | 42.5 | -- |
| NDSU | ND21008GT20 | 0.8 | 8/17 | 2 | 23 | 0 | 57.3 | 19.6 | 35.1 | 4,204 | 36.6 | -- | -- |
| NDSU | ND2108GT73 | 0.8 | 8/31 | 2 | 22 | 0 | 57.8 | 20.8 | 32.5 | 3,514 | 37.3 | 41.7 | 44.5 |
| P3 Genetics | 2106E | 0.6 | 8/31 | 3 | 20 | 0 | 56.3 | 20.5 | 34.0 | 3,238 | 38.6 | 43.9 | -- |
| P3 Genetics | 2207E | 0.7 | 9/2 | 3 | 23 | 0 | 57.7 | 19.5 | 34.4 | 3,009 | 37.3 | -- | -- |
| Peterson | 21XF07 | 0.7 | 9/1 | 3 | 27 | 0 | 56.9 | 19.9 | 33.5 | 2,797 | 42.0 | -- | -- |
| Peterson | 22XF10 | 1.0 | 9/6 | 3 | 25 | 0 | 56.6 | 20.7 | 33.5 | 2,992 | 51.3 | -- | -- |
| Proseed | EL20-73N | 0.7 | 9/3 | 3 | 24 | 0 | 56.8 | 20.5 | 33.1 | 3,060 | 44.4 | -- | -- |
| Proseed | XF10-70 | 0.7 | 8/30 | 4 | 25 | 0 | 56.9 | 20.2 | 33.4 | 3,212 | 42.4 | -- | -- |
| Proseed | XT90-50 | 0.5 | 9/2 | 4 | 26 | 0 | 57.3 | 21.0 | 33.5 | 2,908 | 45.6 | 46.9 | -- |
| REA | R0632XF | 0.6 | 8/31 | 3 | 24 | 0 | 57.5 | 19.4 | 35.0 | 3,262 | 40.4 | -- | -- |
| REA | RX0411 | 0.4 | 8/29 | 3 | 30 | 0 | 57.2 | 21.1 | 32.1 | 2,607 | 43.3 | -- | -- |
| REA | RX0721 | 0.7 | 8/31 | 3 | 27 | 0 | 57.1 | 20.6 | 33.4 | 2,644 | 43.6 | -- | -- |
| Syng NK | NK04-G8E3 | 0.4 | 8/27 | 3 | 24 | 0 | 56.6 | 19.2 | 35.8 | 3,212 | 36.7 | -- | -- |
| Syng NK | NK05-W3XF | 0.5 | 8/29 | 4 | 26 | 0 | 57.0 | 19.6 | 34.6 | 2,732 | 41.3 | -- | -- |
| Syng NK | NK08-B7XF | 0.8 | 8/31 | 5 | 29 | 0 | 57.4 | 19.4 | 34.3 | 3,243 | 42.8 | -- | -- |
| Syng NK | S04-Q7X | 0.4 | 9/1 | 4 | 26 | 0 | 57.3 | 20.6 | 33.9 | 2,817 | 45.1 | 47.8 | -- |
| Syng NK | S05-N5X | 0.5 | 9/1 | 3 | 22 | 0 | 56.1 | 21.1 | 32.3 | 2,934 | 44.0 | 48.0 | 53.2 |
| Thunder | SB8104N | 0.4 | 8/31 | 4 | 22 | 0 | 57.0 | 20.9 | 33.0 | 2,861 | 39.0 | -- | -- |
| Thunder | TE7207 | 0.7 | 9/4 | 4 | 25 | 0 | 57.1 | 20.2 | 32.9 | 3,157 | 44.4 | -- | -- |
| Thunder | TX8109N | 0.9 | 9/3 | 4 | 23 | 0 | 57.2 | 20.7 | 33.6 | 2,933 | 46.0 | -- | -- |
| Thunder | TX8206N | 0.6 | 9/1 | 4 | 26 | 0 | 57.5 | 19.4 | 34.3 | 2,883 | 43.4 | -- | -- |
| Thunder | TX8207N | 0.7 | 9/1 | 4 | 24 | 0 | 57.5 | 19.7 | 33.9 | 3,162 | 42.6 | -- | -- |
| Mean | | | 9/1 | 3 | 24 | 0.03 | 57.1 | 20.1 | 34.0 | 3,014 | 43.2 | 46.6 | 48.7 |
| CV % | | | 1.6 | 27 | 8.1 | 623 | 0.9 | 1.5 | 1.6 | 5.8 | 10.9 | -- | -- |
| LSD 0.05 | | | 2.4 | 1.3 | 2.7 | 0.2 | 0.8 | 0.4 | 0.8 | 243 | 6.6 | -- | -- |
| LSD 0.10 | | | 2.0 | 1.1 | 2.3 | 0.2 | 0.6 | 0.3 | 0.7 | 203 | 5.5 | -- | -- |

Planted: May 18. Harvested: Sept. 28. Previous crop: spring wheat.

¹Maturity is date of 95% brown or tan pods.

²Lodging: 0-none, 9-lying flat on the ground.

Table 16. 2021 Soybean - Irrigated, Enlist, RR and Xtend - Oakes (Carrington REC) - Authors, K. Cooper, H. Eslinger and S. Nelson.

| Company/ | | Mat. | Pod | Plant | Plant | Seeds/ | Test | Seed | Seed | Seed Yield | | |
|-------------|-------------|-------|-----------------------|--------|--------|--------------------|---------|---------|------|------------|-------------------|------------|
| Brand | Variety | Group | Maturity ¹ | Height | Height | Lodge ² | Pound | Weight | Oil | Protein | 2021 | 2-yr. Avg. |
| | | | (date) | (inch) | (inch) | (0-9) | (seeds) | (lb/bu) | (%) | (%) | ------(bu/a)----- | |
| Dairyland | DSR-0920E | 0.9 | 9/18 | 5 | 38 | 4 | 2,376 | 55.0 | 18.0 | 36.9 | 81.2 | 73.2 |
| Dairyland | DSR-1010E | 1.0 | 9/17 | 6 | 36 | 3 | 2,616 | 56.1 | 17.5 | 37.6 | 76.8 | -- |
| Dairyland | DSR-1290E | 1.2 | 9/21 | 4 | 39 | 5 | 2,511 | 55.6 | 19.6 | 33.5 | 84.0 | -- |
| Dyna-Gro | S09XF62 | 0.9 | 9/12 | 6 | 41 | 2 | 2,574 | 54.9 | 19.4 | 34.6 | 90.0 | -- |
| Dyna-Gro | S12EN72 | 1.2 | 9/20 | 6 | 38 | 6 | 2,166 | 55.5 | 18.3 | 36.7 | 83.8 | -- |
| Dyna-Gro | S12XF92 | 1.2 | 9/16 | 6 | 38 | 3 | 2,500 | 55.3 | 18.5 | 35.5 | 89.9 | -- |
| Legacy | LS094-21 XF | 0.9 | 9/14 | 5 | 40 | 4 | 2,571 | 55.2 | 18.4 | 36.3 | 90.0 | -- |
| Legacy | LS102-20E | 1.0 | 9/15 | 5 | 35 | 4 | 2,680 | 55.0 | 17.8 | 36.6 | 87.0 | 77.7 |
| Legacy | LS122-21E | 1.2 | 9/16 | 5 | 40 | 5 | 2,538 | 55.9 | 19.8 | 33.1 | 99.9 | -- |
| Legacy | LS-1320N | 1.3 | 9/19 | 5 | 40 | 6 | 2,238 | 54.7 | 18.3 | 35.3 | 92.6 | -- |
| LG Seeds | LGS0701XF | 0.7 | 9/9 | 5 | 40 | 5 | 2,543 | 54.6 | 18.4 | 35.7 | 84.0 | -- |
| LG Seeds | LGS0822E3 | 0.8 | 9/15 | 5 | 37 | 5 | 2,180 | 55.2 | 18.6 | 36.6 | 84.3 | -- |
| LG Seeds | LGS0939XF | 0.9 | 9/15 | 5 | 41 | 3 | 2,557 | 48.0 | 19.1 | 34.9 | 76.2 | -- |
| LG Seeds | LGS1203E3 | 1.2 | 9/20 | 5 | 38 | 5 | 2,224 | 55.4 | 18.4 | 36.4 | 88.2 | -- |
| LG Seeds | LGS1232XF | 1.2 | 9/16 | 6 | 40 | 4 | 2,605 | 54.9 | 18.5 | 35.5 | 88.6 | -- |
| NDSU | ND2108GT73 | 0.8 | 9/20 | 6 | 37 | 4 | 2,775 | 53.9 | 18.4 | 35.9 | 56.9 | 62.2 |
| P3 Genetics | 2106E | 0.6 | 9/14 | 4 | 34 | 2 | 2,673 | 55.1 | 18.1 | 36.9 | 62.1 | -- |
| P3 Genetics | 2108E | 0.8 | 9/16 | 5 | 36 | 4 | 2,310 | 55.1 | 18.7 | 36.2 | 63.1 | -- |
| REA | RX0721 | 0.7 | 9/14 | 5 | 39 | 5 | 2,580 | 54.7 | 18.7 | 35.1 | 70.9 | -- |
| REA | R1042XF | 1.0 | 9/18 | 5 | 42 | 4 | 2,650 | 55.7 | 18.1 | 37.0 | 74.4 | -- |
| REA | R1350XF | 1.3 | 9/20 | 5 | 38 | 6 | 2,554 | 56.3 | 19.1 | 34.6 | 82.1 | -- |
| Thunder | TX8109N | 0.9 | 9/14 | 5 | 40 | 4 | 2,608 | 55.2 | 18.5 | 36.0 | 82.5 | -- |
| Thunder | SB8010N | 1.0 | 9/17 | 5 | 38 | 4 | 2,326 | 53.9 | 19.2 | 34.6 | 77.4 | -- |
| Thunder | TE7011 | 1.1 | 9/19 | 5 | 42 | 4 | 2,607 | 56.7 | 17.1 | 35.8 | 85.5 | -- |
| Thunder | TX8211N | 1.1 | 9/18 | 6 | 40 | 4 | 2,634 | 55.8 | 18.2 | 36.8 | 74.6 | -- |
| Mean | | | 9/17 | 5 | 38 | 4 | 2,504 | 54.9 | 18.5 | 35.8 | 81.0 | 71.0 |
| CV % | | | 1.0 | 17.0 | 2.8 | 30 | 2.8 | 5.5 | 1.0 | 0.9 | 8.3 | -- |
| LSD 0.05 | | | 1.7 | 1.2 | 2.9 | 2 | 97 | 4.2 | 0.3 | 0.5 | 9.4 | -- |
| LSD 0.10 | | | 1.4 | 1.0 | 2.4 | 1 | 81 | 3.5 | 0.2 | 0.4 | 7.9 | -- |

Planted: May 21. Harvested: Oct. 5. Previous crop: soybean.

¹Maturity is date of 95% brown or tan pods.²Lodging: 0-none, 9-lying flat on the ground.

Table 17. 2021 Soybean - Irrigated, Conventional - Oakes (Carrington REC) - Authors, K. Cooper, H. Eslinger and S. Nelson.

| Company/ Brand | Variety | Mat. Group | Maturity ¹ (date) | Pod Ht (inch) | Plant Height (inch) | Plant Lodge ² (0-9) | Seeds/ Pound (seeds) | Test Weight (lb/bu) | Seed Oil (%) | Seed Protein (%) | Seed Yield 2021 3-yr. Avg. ------(bu/a)----- | |
|-------------------|-------------|---------------|---------------------------------|---------------------|---------------------------|--------------------------------------|----------------------------|---------------------------|--------------------|------------------------|--|------|
| Brushvale | BS1146 | 1.2 | 9/19 | 4 | 38 | 5.0 | 2,326 | 50.7 | 17.8 | 38.1 | 65.7 | 63.2 |
| Brushvale | BS1512 | 1.5 | 9/18 | 5 | 37 | 7.0 | 2,499 | 53.7 | 17.9 | 37.2 | 66.7 | 61.5 |
| NDSU | ND Dickey | 0.7 | 9/17 | 4 | 37 | 4.0 | 2,379 | 55.3 | 18.2 | 35.7 | 69.2 | 67.1 |
| NDSU | ND Stutsman | 0.8 | 9/17 | 5 | 40 | 4.8 | 2,618 | 54.6 | 18.7 | 35.2 | 69.2 | 67.9 |
| Sevita | Panorama | 0.3 | 9/9 | 4 | 33 | 6.3 | 2,185 | 52.5 | 18.1 | 38.4 | 77.1 | 66.8 |
| Sevita | Skyline | 1.0 | 9/17 | 5 | 42 | 6.0 | 2,271 | 55.9 | 18.3 | 38.8 | 82.9 | 70.1 |
| Mean | | | 9/16 | 4 | 38 | 6 | 2,380 | 53.8 | 18.2 | 37.2 | 71.8 | 66.1 |
| CV % | | | 1.3 | 20.9 | 4.6 | 19 | 2.1 | 5.9 | 1.0 | 1.2 | 12.2 | -- |
| LSD 0.05 | | | 1.9 | 1.1 | 2.1 | 1.3 | 61 | 3.9 | 0.2 | 0.6 | 10.5 | -- |
| LSD 0.10 | | | 2.3 | 1.4 | 2.6 | 1.5 | 74 | 4.7 | 0.3 | 0.7 | 12.7 | -- |

Planted: May 21. Harvested: Oct. 5. Previous crop: soybean.

¹Maturity is date of 95% brown or tan pods.²Lodging: 0-none, 9-lying flat on the ground.**Table 18. 2021 Soybean - Conventional - Dazey (Carrington REC) - Authors, M. Ostlie, B. Schatz and T. Indergaard.**

| Company/ Brand | Variety | Mat. Group | Maturity ¹ (date) | Pod Ht (inch) | Plant Height (inch) | Test Weight (lb/bu) | Seed Oil (%) | Seed Protein (%) | Seed Yield 2021 3-yr. Avg. ------(bu/a)----- | |
|-------------------|-------------|---------------|---------------------------------|---------------------|---------------------------|---------------------------|--------------------|------------------------|--|------|
| Legacy | LS020-20 | 0.2 | 8/29 | 6 | 29 | 58.6 | 19.6 | 35.9 | 23.4 | -- |
| Legacy | LS040-21 | 0.4 | 9/27 | 4 | 28 | 57.3 | 19.3 | 38.2 | 29.9 | -- |
| NDSU | ND Benson | 0.4 | 9/8 | 3 | 22 | 57.8 | 20.2 | 35.7 | 35.1 | 45.2 |
| NDSU | ND Dickey | 0.7 | 9/11 | 3 | 24 | 58.2 | 20.3 | 34.7 | 40.9 | 48.3 |
| NDSU | ND Rolette | 0.9 | 8/29 | 3 | 23 | 57.5 | 20.0 | 35.3 | 34.4 | 46.5 |
| NDSU | ND Stutsman | 0.8 | 9/6 | 3 | 26 | 58.2 | 20.8 | 34.0 | 39.3 | 51.0 |
| Prograin | Asana | 0.6 | 9/7 | 4 | 24 | 58.4 | 20.6 | 36.2 | 37.7 | -- |
| Prograin | Marula | 0.6 | 9/9 | 4 | 29 | 58.2 | 19.9 | 36.0 | 39.8 | -- |
| Richland | MK0249 | 0.2 | 9/6 | 4 | 23 | 57.7 | 19.8 | 33.8 | 36.2 | 40.1 |
| Richland | MK0508 | 0.8 | 9/12 | 4 | 24 | 58.2 | 18.8 | 34.9 | 35.4 | 37.7 |
| Richland | MK0603 | 0.6 | 9/12 | 5 | 28 | 57.5 | 17.6 | 36.2 | 37.0 | 39.0 |
| Richland | MK1016 | 1.0 | 9/8 | 4 | 28 | 58.0 | 19.3 | 35.8 | 36.0 | 38.8 |
| Richland | MK146 | 1.1 | 9/16 | 4 | 24 | 57.5 | 19.1 | 37.0 | 43.5 | 47.2 |
| Richland | MK41 | 1.1 | 9/5 | 4 | 27 | 58.3 | 18.9 | 35.9 | 36.6 | 48.0 |
| Richland | MK808CN | 0.8 | 9/10 | 4 | 26 | 57.8 | 21.1 | 33.2 | 33.9 | 46.5 |
| Richland | MK9101 | 1.1 | 9/16 | 5 | 28 | 57.4 | 23.4 | 41.8 | 35.0 | -- |
| U of M | MN0811CN | 0.8 | 9/10 | 4 | 24 | 58.1 | 20.4 | 35.8 | 38.5 | -- |
| Mean | | | 9/8 | 4 | 26 | 57.9 | 19.9 | 35.9 | 36.0 | 44.4 |
| CV % | | | 1.6 | 23 | 8.6 | 0.7 | 1.6 | 1.8 | 10.5 | -- |
| LSD 0.05 | | | 2.5 | 1.3 | 3.1 | 0.6 | 0.5 | 0.9 | 5.4 | -- |
| LSD 0.10 | | | 2.1 | 1.1 | 2.6 | 0.5 | 0.4 | 0.8 | 4.5 | -- |

Planted: May 18. Harvested: Sept. 28.

¹Maturity is date of 95% brown or tan pods.

Table 19. 2021 Soybean - Enlist, GT27, RR and Xtend - LaMoure (Carrington REC) - Authors, C. Miranda and B. Schatz.

| Company/ Brand | Variety | Maturity Group | Seed Protein (%) | Seed Oil (%) | Seed Yield | |
|-------------------|-------------|-------------------|------------------------|--------------------|-------------------|------------|
| | | | | | 2021 | 2-yr. Avg. |
| | | | | | ------(bu/a)----- | |
| Dairyland | DSR-1010E | 1.0 | 35.4 | 20.6 | 27.4 | -- |
| Dairyland | DSR-0920E | 0.9 | 36.7 | 20.6 | 26.0 | 44.7 |
| Dairyland | DSR-1290E | 1.2 | 33.4 | 23.9 | 34.3 | -- |
| DynaGro | S07EN61 | 0.7 | 30.7 | 26.4 | 34.2 | 46.6 |
| DynaGro | S09EN941 | 0.9 | 36.6 | 20.3 | 31.9 | 46.8 |
| DynaGro | S09XF62 | 0.9 | 34.5 | 21.7 | 28.8 | -- |
| Legacy | LS094-21 XF | 0.9 | 3.1 | 21.8 | 32.1 | -- |
| Legacy | LS102-20E | 1.0 | 35.7 | 20.9 | 27.2 | 38.1 |
| Legacy | LS122-21E | 1.2 | 33.9 | 22.3 | 33.3 | -- |
| Legacy | LS-1320N | 1.3 | 37.5 | 20.3 | 35.0 | -- |
| LG Seeds | AG06X8 | 0.9 | 35.6 | 21.7 | 28.6 | -- |
| LG Seeds | LGS0701XF | 0.7 | 36.5 | 20.7 | 25.1 | -- |
| LG Seeds | LGS0822E3 | 0.8 | 33.9 | 21.9 | 28.1 | -- |
| P3 Genetics | 1911E | 1.1 | 34.4 | 21.2 | 26.7 | 45.6 |
| P3 Genetics | 2013E | 1.3 | 34.2 | 22.1 | 29.8 | -- |
| P3 Genetics | 2108E | 0.8 | 34.5 | 21.9 | 27.3 | 44.3 |
| P3 Genetics | 2212E | 1.2 | 35.6 | 20.9 | 29.4 | -- |
| Peterson | 22XF10 | 1.0 | 34.4 | 22.1 | 28.2 | -- |
| Proseed | EL21-03N | 1.0 | 36.5 | 20.3 | 25.8 | 39.3 |
| Proseed | EL21-23N | 1.2 | 33.8 | 22.6 | 25.2 | 44.4 |
| Syng NK | NK08-B7XF | 0.8 | 36.4 | 20.7 | 27.9 | -- |
| Syng NK | NK10-W8XF | 0.1 | 35.7 | 21.0 | 27.1 | -- |
| Syng NK | NK14-C7XF | 1.4 | 36.3 | 21.0 | 32.8 | -- |
| Mean | | | 33.7 | 21.6 | 29.2 | 43.7 |
| CV % | | | -- | -- | 21.5 | -- |
| LSD 0.05 | | | -- | -- | 9.8 | -- |
| LSD 0.10 | | | -- | -- | 8.2 | -- |

Planted: May 17. Harvested: Oct. 4.

Table 20. 2021 Soybean - Conventional - LaMoure (Carrington REC) - Authors, C. Miranda and B. Schatz.

| Company/ Brand | Variety | Maturity Group | Seed Protein (%) | Seed Oil (%) | Seed Yield | |
|-------------------|-----------|-------------------|------------------------|--------------------|-------------------|------------|
| | | | | | 2021 | 3-yr. Avg. |
| | | | | | ------(bu/a)----- | |
| NDSU | ND Benson | 0.4 | 35.0 | 21.9 | 23.7 | 37.7 |
| NDSU | ND Dickey | 0.7 | 33.7 | 21.6 | 28.5 | -- |
| Richland | MK0508 | 0.8 | 34.6 | 19.8 | 26.0 | 27.5 |
| Richland | MK0603 | 0.6 | 37.2 | 18.7 | 29.8 | 35.6 |
| Richland | MK1016 | 1.0 | 36.3 | 20.3 | 22.7 | 31.3 |
| Richland | MK146 | 1.1 | 36.2 | 20.8 | 31.7 | 39.5 |
| Richland | MK41 | 1.1 | 36.8 | 19.9 | 22.2 | 37.0 |
| Richland | MK808CN | 0.8 | 33.4 | 22.8 | 28.8 | 34.1 |
| Richland | MK9101 | 1.1 | 38.3 | 18.8 | 30.7 | -- |
| Sevita | Skyline | 1.0 | 36.2 | 21.3 | 33.2 | -- |
| Mean | | | 35.8 | 20.6 | 27.7 | 34.7 |
| CV % | | | -- | -- | 14.7 | -- |
| LSD 0.05 | | | -- | -- | 6.9 | -- |
| LSD 0.10 | | | -- | -- | 5.7 | -- |

Planted: May 17. Harvested: Oct. 4.

Table 21. 2021 Soybean - Enlist, GT27, RR and Xtend - Wishek (Carrington REC) - Authors, M. Ostlie, B. Schatz and T. Indergaard.

| Company/ Brand | Variety | Maturity | | Pod Ht | Plant Ht | Seeds/ Pound | Test Weight | Seed Oil | Seed Protein | Seed Yield | |
|-------------------|-------------|----------|---------------------------------|-----------|-------------|-----------------|----------------|-------------|-----------------|------------|----------------------|
| | | Group | Maturity ¹ (date) | | | | | | | 2021 | 2-yr. Avg. (bu/a) |
| Integra | 40602N | 0.6 | 9/16 | 3 | 22 | 2,768 | 57.9 | 18.4 | 39.6 | 45.2 | -- |
| Integra | 40831N | 0.8 | 9/16 | 3 | 23 | 2,560 | 56.2 | 19.1 | 37.4 | 37.7 | -- |
| Integra | 70622N | 0.6 | 9/13 | 3 | 26 | 3,283 | 56.6 | 18.5 | 37.9 | 42.7 | -- |
| Integra | 70832N | 0.8 | 9/12 | 4 | 27 | 3,053 | 57.2 | 18.5 | 38.2 | 41.4 | -- |
| Legacy | LS102-20E | 1.0 | 9/18 | 3 | 22 | 2,841 | 57.2 | 18.1 | 41.2 | 42.5 | -- |
| Legacy | LS122-21E | 1.2 | 9/15 | 4 | 26 | 2,919 | 55.4 | 21.0 | 35.0 | 44.1 | -- |
| Legacy | LS094-21 XF | 0.9 | 9/18 | 3 | 23 | 2,855 | 56.3 | 18.9 | 38.9 | 41.5 | -- |
| LG Seeds | LGS0701XF | 0.7 | 9/14 | 4 | 25 | 3,119 | 56.4 | 18.8 | 37.8 | 40.0 | -- |
| NDSU | ND17009GT | 0.9 | 8/30 | 4 | 24 | 3,361 | 57.7 | 19.9 | 38.9 | 31.9 | -- |
| NDSU | ND21008GT20 | 0.8 | 8/25 | 3 | 23 | 4,126 | 57.0 | 19.2 | 37.4 | 26.6 | -- |
| NDSU | ND2108GT73 | 0.7 | 9/14 | 3 | 22 | 3,419 | 56.6 | 20.0 | 36.6 | 37.0 | 47.9 |
| P3 Genetics | 2106E | 0.6 | 9/14 | 4 | 20 | 3,098 | 55.5 | 19.6 | 38.8 | 36.4 | 48.4 |
| P3 Genetics | 2108E | 0.8 | 9/16 | 4 | 22 | 2,499 | 56.1 | 19.2 | 37.5 | 38.4 | -- |
| REA | R1042XF | 1.0 | 9/19 | 4 | 25 | 2,915 | 56.7 | 18.8 | 39.7 | 43.0 | -- |
| REA | RX0411 | 0.4 | 9/12 | 5 | 29 | 2,829 | 55.7 | 20.2 | 35.6 | 44.0 | 55.8 |
| REA | RX0721 | 0.7 | 9/14 | 5 | 25 | 2,944 | 56.6 | 19.4 | 37.5 | 41.5 | 56.7 |
| REA | R0632XF | 0.6 | 9/13 | 4 | 23 | 3,265 | 56.4 | 18.2 | 39.6 | 36.3 | -- |
| Syng NK | NK05-W3XF | 0.5 | 9/13 | 5 | 26 | 3,075 | 56.6 | 18.8 | 38.1 | 41.1 | -- |
| Syng NK | NK08-B7XF | 0.8 | 9/14 | 4 | 28 | 2,890 | 56.6 | 18.2 | 37.8 | 39.4 | -- |
| Syng NK | NK10-W8XF | 0.1 | 9/15 | 5 | 24 | 2,832 | 57.0 | 18.1 | 38.8 | 48.6 | -- |
| Syng NK | S05-N5X | 0.5 | 9/14 | 3 | 23 | 3,071 | 56.2 | 19.2 | 37.5 | 35.5 | 52.2 |
| Mean | | | 9/13 | 4 | 24 | 3,034 | 56.6 | 19.1 | 38.1 | 39.8 | 52.2 |
| CV % | | | 1.3 | 26 | 9.7 | 3.8 | 1.0 | 3.7 | 3.6 | 12.9 | -- |
| LSD 0.05 | | | 2.2 | 1.3 | 3.3 | 159 | 0.8 | 1.0 | 1.9 | 7.3 | -- |
| LSD 0.10 | | | 1.9 | 1.1 | 2.8 | 133 | 0.7 | 0.8 | 1.6 | 6.1 | -- |

Planted: May 13. Harvested: Oct. 8 Previous crop: spring wheat.

¹Maturity is date of 95% brown or tan pods.**Table 22. 2021 Soybean - Conventional - Wishek (Carrington REC) - Authors, M. Ostlie, B. Schatz and T. Indergaard.**

| Company/ Brand | Variety | Maturity | | Pod Ht | Plant Ht | Seeds/ Pound | Test Weight | Seed Oil | Seed Protein | Seed Yield | |
|-------------------|-------------|----------|---------------------------------|-----------|-------------|-----------------|----------------|-------------|-----------------|------------|----------------------|
| | | Group | Maturity ¹ (date) | | | | | | | 2021 | 3-yr. Avg. (bu/a) |
| NDSU | ND Benson | 0.4 | 9/14 | 3 | 18 | 3,109 | 56.1 | 19.5 | 38.7 | 25.1 | 33.6 |
| NDSU | ND Dickey | 0.7 | 9/13 | 3 | 20 | 2,811 | 56.7 | 19.5 | 37.1 | 25.4 | 40.8 |
| NDSU | ND Stutsman | 0.8 | 9/10 | 4 | 22 | 3,568 | 55.9 | 21.1 | 34.4 | 28.5 | 39.1 |
| Sevita | Skyline | 1.0 | 9/20 | 4 | 22 | 2,669 | 57.2 | 18.6 | 40.7 | 27.9 | -- |
| Mean | | | 9/15 | 3 | 21 | 3,039 | 56.5 | 19.7 | 37.7 | 26.7 | 37.8 |
| CV % | | | 0.8 | 19 | 8.3 | 4.0 | 0.5 | 2.1 | 1.8 | 10.9 | -- |
| LSD 0.05 | | | 1.6 | 1.0 | 2.6 | 186 | 0.5 | 0.6 | 1.0 | 4.5 | -- |
| LSD 0.10 | | | 1.3 | 0.8 | 2.2 | 152 | 0.4 | 0.5 | 0.8 | 3.7 | -- |

Planted: May 13. Harvested: Oct. 8. Previous crop: spring wheat.

¹Maturity is date of 95% brown or tan pods.

Table 23. 2021 Soybean - Enlist, GT, RR and Xtend - Langdon - Authors, B. Hanson, L. Henry and J. Faul (1 of 2).

| Company/ Brand | Variety | Herbicide Trait | Maturity | | Plant Height | Seed Oil | Seed Protein | Seed Yield | | |
|-------------------|----------------|--------------------|----------|---------------------------------|-----------------|-------------|-----------------|------------|------------|------------------------------------|
| | | | Group | Maturity ¹ (date) | | | | 2021 | 2-yr. Avg. | 2-site Avg. ² (bu/a) |
| BioGene | BG8000 | RR2X | 00.9 | 9/10 | 37 | 16.5 | 32.3 | 59.6 | 59.0 | 54.5 |
| BioGene | BG8006 | RR2X | 00.6 | 9/8 | 34 | 16.3 | 32.3 | 61.4 | -- | 51.8 |
| BioGene | BG9021E3 | Enlist E3 | 0.2 | 9/18 | 34 | 15.4 | 32.8 | 62.4 | -- | 53.6 |
| Dahlman | 1102E3N | Enlist E3 | 0.2 | 9/21 | 27 | 16.0 | 32.2 | 66.3 | 64.4 | 56.9 |
| Dahlman | 1201E3N | Enlist E3 | 0.1 | 9/18 | 33 | 15.8 | 32.1 | 64.5 | -- | 54.6 |
| Dairyland | DSR-0119E | Enlist E3 | 0.1 | 9/18 | 34 | 16.5 | 30.9 | 68.3 | -- | -- |
| Dyna-Gro | S009XF52 | RR2XF | 00.9 | 9/6 | 31 | 16.9 | 31.3 | 55.9 | -- | 46.5 |
| Dyna-Gro | S009XT68 | RR2X | 00.9 | 9/12 | 36 | 15.0 | 33.4 | 63.2 | 63.3 | 57.2 |
| Dyna-Gro | S02EN71 | Enlist E3 | 0.2 | 9/20 | 26 | 15.9 | 32.2 | 67.7 | -- | 58.4 |
| Golden H. | GH00833E3 | Enlist E3 | 00.8 | 9/13 | 37 | 16.3 | 32.7 | 65.9 | 61.5 | 54.1 |
| Golden H. | GH00982XF | RR2XF | 00.9 | 9/12 | 31 | 16.0 | 32.6 | 63.1 | -- | 53.6 |
| Golden H. | GH0272XF | RR2XF | 0.2 | 9/11 | 33 | 16.3 | 31.5 | 59.1 | -- | 55.4 |
| Innkvictis | A00918X | RR2X | 00.9 | 9/11 | 35 | 15.9 | 32.3 | 60.7 | -- | 51.5 |
| Innkvictis | A00979X | RR2X | 00.9 | 9/13 | 29 | 15.8 | 34.1 | 66.6 | -- | 56.0 |
| Integra | 40089N | Enlist E3 | 00.8 | 9/13 | 35 | 15.9 | 32.6 | 64.8 | 60.3 | 54.0 |
| Integra | 50081N | RR2X | 00.8 | 9/8 | 30 | 15.5 | 34.4 | 52.8 | 55.1 | 44.3 |
| Legacy | LS-00639N RR2X | RR2X | 00.6 | 9/6 | 32 | 16.2 | 32.3 | 59.5 | 60.0 | 48.5 |
| Legacy | LS0094-21 XF | RR2XF | 00.9 | 9/8 | 31 | 16.4 | 31.3 | 52.5 | -- | 45.7 |
| Legacy | LS-00930 RR2X | RR2X | 00.9 | 9/13 | 30 | 16.0 | 33.9 | 63.4 | 58.9 | 56.8 |
| Legacy | LS012-20E | Enlist E3 | 0.1 | 9/15 | 29 | 15.9 | 32.3 | 61.1 | 63.4 | 53.8 |
| Legacy | LS012-21E | Enlist E3 | 0.1 | 9/20 | 34 | 16.1 | 32.8 | 66.8 | -- | 58.7 |
| Legacy | LS-0239N RR2X | RR2X | 0.2 | 9/15 | 35 | 15.8 | 31.5 | 66.7 | 65.6 | 60.5 |
| LG Seeds | LGS00663RX | RR2X | 00.6 | 9/9 | 33 | 15.7 | 33.3 | 61.7 | 62.4 | 51.9 |
| LG Seeds | LGS00838XF | RR2XF | 00.8 | 9/12 | 32 | 15.8 | 33.0 | 57.8 | -- | 49.2 |
| LG Seeds | LGS0111RX | RR2X | 0.1 | 9/14 | 37 | 16.1 | 33.7 | 67.3 | 65.1 | 58.3 |
| NDSU | 21ND008GT20 | GT | 00.8 | 9/7 | 33 | 16.0 | 33.6 | 59.4 | -- | 50.3 |
| NDSU | ND17009GT | GT | 00.9 | 9/11 | 36 | 16.5 | 34.7 | 56.1 | 55.7 | 48.8 |
| P3 Genetics | 2002E | Enlist E3 | 0.2 | 9/18 | 28 | 15.5 | 32.5 | 61.0 | -- | 53.1 |
| P3 Genetics | 2201E | Enlist E3 | 0.1 | 9/21 | 35 | 16.2 | 32.8 | 60.6 | -- | 56.0 |
| Peterson | 19EN008 | Enlist E3 | 00.8 | 9/12 | 37 | 16.0 | 32.8 | 67.9 | 62.8 | 56.8 |
| Peterson | 21X007 | RR2X | 00.7 | 9/6 | 33 | 16.1 | 30.7 | 68.7 | 64.0 | 55.2 |
| Peterson | 22XF009 | RR2XF | 00.9 | 9/7 | 32 | 16.6 | 31.5 | 54.6 | -- | 48.0 |
| Pioneer | P005A83X | RR2X | 00.5 | 9/7 | 32 | 16.6 | 32.6 | 56.9 | -- | -- |
| Pioneer | P006A37X | RR2X | 00.6 | 9/5 | 30 | 16.8 | 32.4 | 62.6 | -- | -- |
| Pioneer | P009T18E | Enlist E3 | 00.9 | 9/11 | 34 | 16.1 | 32.4 | 62.8 | -- | 53.0 |
| Pioneer | P00A49X | RR2X | 0.0 | 9/11 | 36 | 16.7 | 31.7 | 62.6 | 60.3 | 54.3 |
| Pioneer | P01A84X | RR2X | 0.1 | 9/17 | 32 | 16.8 | 31.3 | 61.0 | 57.1 | 49.5 |
| Pioneer | P01T92E | Enlist E3 | 0.1 | 9/17 | 33 | 16.3 | 31.9 | 61.1 | -- | -- |
| Proseed | EL80-093N | Enlist E3 | 00.9 | 9/12 | 35 | 15.8 | 33.0 | 62.5 | 56.7 | -- |
| Proseed | XT20-07 | RR2X | 00.7 | 9/6 | 32 | 16.6 | 29.9 | 60.9 | 59.4 | -- |
| Proseed | XT80-20N | RR2X | 0.2 | 9/13 | 35 | 15.6 | 32.0 | 65.5 | -- | -- |
| REA | R0112XF | RR2XF | 0.1 | 9/15 | 40 | 15.3 | 34.2 | 68.4 | -- | 58.0 |
| REA | RX00912 | RR2X | 00.9 | 9/11 | 35 | 16.6 | 31.2 | 59.4 | -- | 51.7 |
| Stine | 002EE06 | Enlist E3 | 00.6 | 9/2 | 32 | 16.0 | 33.6 | 47.5 | -- | 37.0 |
| Stine | 01EA63 | Enlist E3 | 0.0 | 9/14 | 31 | 15.5 | 33.2 | 67.7 | 64.3 | 55.2 |
| Stine | 01EE03 | Enlist E3 | 0.1 | 9/20 | 35 | 16.2 | 33.1 | 64.2 | -- | 57.4 |
| Stine | 03EB02 | Enlist E3 | 0.2 | 9/16 | 28 | 15.6 | 32.0 | 62.7 | -- | 54.6 |
| Syng NK | NK009-T1XF | RR2XF | 00.9 | 9/11 | 32 | 16.1 | 32.8 | 63.3 | -- | 54.8 |
| Mean | | | | 9/12 | 33 | 16.1 | 32.7 | 61.5 | 60.7 | 53.2 |
| CV % | | | | 1.6 | 7.9 | 1.6 | 1.5 | 8.2 | -- | -- |
| LSD 0.05 | | | | 2.6 | 3.7 | 0.5 | 1.0 | 7.1 | -- | -- |
| LSD 0.10 | | | | 2.2 | 3.1 | 0.4 | 0.8 | 5.9 | -- | -- |

Table 23. 2021 Soybean - Enlist, GT, RR and Xtend - Langdon - Authors, B. Hanson, L. Henry and J. Faul (2 of 2).

| Company/ Brand | Variety | Herbicide Trait | Maturity | | Plant Height | Seed Oil | Seed Protein | Seed Yield | | |
|-------------------|----------|--------------------|----------|---------------------------------|-----------------|-------------|-----------------|------------|------------|--------------------------|
| | | | Group | Maturity ¹ (date) | | | | 2021 | 2-yr. Avg. | 2-site Avg. ² |
| Syng NK | S006-R7X | RR2X | 00.6 | 9/3 | 29 | 16.6 | 32.2 | 61.0 | 62.4 | 52.1 |
| Syng NK | S008-E3 | Enlist E3 | 008 | 9/11 | 34 | 15.8 | 33.1 | 64.4 | 61.3 | 57.1 |
| Thunder | SB8001 | RR2X | 0.1 | 9/12 | 27 | 16.3 | 33.4 | 61.8 | 57.9 | 55.0 |
| Thunder | SB81006 | RR2X | 00.6 | 9/6 | 31 | 16.6 | 30.3 | 56.8 | 57.8 | 48.7 |
| Thunder | SB87009 | RR2X | 00.9 | 9/11 | 35 | 15.2 | 33.2 | 62.1 | 61.9 | 54.2 |
| Thunder | SB88007N | RR2X | 00.7 | 9/8 | 34 | 16.6 | 32.5 | 60.3 | 58.3 | 51.4 |
| Thunder | TE71008N | Enlist E3 | 00.8 | 9/11 | 36 | 16.2 | 32.5 | 61.8 | 60.5 | 55.0 |
| Thunder | TX82008N | RR2XF | 00.8 | 9/12 | 34 | 15.9 | 32.7 | 63.1 | -- | 54.5 |
| Mean | | | | 9/12 | 33 | 16.1 | 32.7 | 61.5 | 60.7 | 53.2 |
| CV % | | | | 1.6 | 7.9 | 1.6 | 1.5 | 8.2 | -- | -- |
| LSD 0.05 | | | | 2.6 | 3.7 | 0.5 | 1.0 | 7.1 | -- | -- |
| LSD 0.10 | | | | 2.2 | 3.1 | 0.4 | 0.8 | 5.9 | -- | -- |

Planted: May 18. Harvested: Oct. 5. Previous crop: wheat.

¹Date of physiological maturity at R7 stage (one pod on the main stem is mature brown or tan color).

²A 2-site average of Cavalier County (Langdon) and Pembina County (Cavalier).

Table 24. 2021 Soybean - Conventional - Langdon - Authors, B. Hanson, L. Henry and J. Faul.

| Company/ Brand | Variety | Maturity | | Plant Height | Seed Oil | Seed Protein | Seed Yield | | | |
|----------------------------|--------------|----------|---------------------------------|-----------------|-------------|-----------------|------------|------------|--------------------------|------|
| | | Group | Maturity ¹ (date) | | | | 2021 | 2-yr. Avg. | 2-site Avg. ² | |
| Conventional | | | | | | | | | | |
| Legacy | LS0090-20 | | 00.9 | 9/7 | 25 | 16.2 | 35.7 | 49.9 | 51.0 | 36.3 |
| Legacy | LS020-20 | | 0.2 | 9/10 | 34 | 15.9 | 32.8 | 50.2 | 51.5 | 37.4 |
| Legacy | LS004-21 | | 00.4 | 9/5 | 32 | 17.6 | 32.4 | 43.5 | -- | 30.6 |
| Legacy | LS005-21 | | 00.5 | 9/3 | 27 | 14.8 | 39.8 | 43.6 | -- | 31.5 |
| Legacy | LS006-21 | | 00.6 | 9/5 | 29 | 16.2 | 34.0 | 51.3 | -- | 36.6 |
| Prograin | Liska | | 00.3 | 9/7 | 26 | 15.6 | 35.9 | 51.3 | -- | -- |
| Prograin | Maya | | 00.7 | 9/7 | 26 | 14.7 | 36.2 | 48.8 | 47.9 | -- |
| Prograin | Hana | | 0.1 | 9/11 | 27 | 15.9 | 35.9 | 53.7 | 51.5 | -- |
| Richland | MK0249 | | 0.2 | 9/13 | 24 | 15.8 | 32.2 | 49.3 | 45.4 | 38.8 |
| Sevita | Astor | | 0.3 | 9/11 | 29 | 16.7 | 34.4 | 53.8 | 50.3 | 40.1 |
| NDSU | ND Rolette | | 00.9 | 9/10 | 27 | 16.8 | 32.0 | 58.4 | 54.0 | 42.4 |
| NDSU | ND Benson | | 0.4 | 9/18 | 30 | 16.3 | 33.0 | 52.6 | 49.6 | 44.2 |
| Roundup Ready Check | | | | | | | | | | |
| | RR2X Check#1 | | 00.5 | 9/4 | 25 | 16.4 | 31.4 | 53.1 | 50.7 | 41.1 |
| | RR2Y Check#2 | | 00.9 | 9/10 | 28 | 16.2 | 32.7 | 60.2 | 59.2 | 47.3 |
| | RR2Y Check#3 | | 00.8 | 9/8 | 26 | 15.8 | 31.7 | 53.8 | 54.2 | 40.5 |
| Mean | | | | 9/10 | 28 | 16.1 | 34.0 | 51.6 | 51.4 | 38.9 |
| CV % | | | | 1.2 | 7.4 | 1.8 | 1.6 | 7.8 | -- | -- |
| LSD 0.05 | | | | 2 | 2.9 | 0.6 | 1.1 | 5.6 | -- | -- |
| LSD 0.10 | | | | 1.7 | 2.4 | 0.5 | 0.9 | 7.8 | -- | -- |

Planted: May 22. Harvested: Sept. 29. Previous crop: wheat.

¹Date of physiological maturity at R7 stage (one pod on the main stem is mature brown or tan color).

²A 2-site average of conventional trials at Langdon REC and Walsh County (Park River).

Table 25. 2021 Soybean - Enlist, GT, RR and Xtend - Park River (Langdon REC) - Authors, B. Hanson, L. Henry and J. Faul (1 of 2).

| Company/ Brand | Variety | Herbicide Trait | Maturity Group | Maturity ¹ Maturity ¹ (date) | Plant Height (inch) | Seed Oil (%) | Seed Protein (%) | Seed Yield ------(bu/a)----- 2021 2-yr. Avg. 2-site avg. ² | | |
|-------------------|---------------|--------------------|-------------------|--|---------------------------|--------------------|------------------------|---|------|------|
| BioGene | BG8000 | RR2X | 00.9 | 9/3 | 17 | 19.1 | 30.2 | 27.1 | 46.7 | -- |
| BioGene | BG8006 | RR2X | 00.6 | 8/31 | 18 | 18.3 | 31.1 | 23.5 | -- | -- |
| BioGene | BG9021E3 | Enlist E3 | 0.2 | 9/9 | 17 | 17.4 | 31.7 | 26.0 | -- | -- |
| Dahlman | 6004XN | RR2X | 0.4 | 9/15 | 19 | 17.4 | 32.8 | 32.8 | 52.9 | 45.2 |
| Dahlman | 7203XF | RR2XF | 0.3 | 9/7 | 22 | 17.7 | 32.5 | 30.6 | -- | 42.7 |
| Dyna-Gro | S02EN71 | Enlist E3 | 0.2 | 9/14 | 16 | 17.3 | 33.0 | 24.5 | 51.2 | 37.0 |
| Dyna-Gro | S04XF32 | RR2XF | 0.4 | 9/13 | 22 | 17.5 | 32.4 | 34.7 | -- | 44.3 |
| Dyna-Gro | S04XT91 | RR2X | 0.4 | 9/14 | 18 | 17.7 | 31.9 | 33.4 | 53.2 | 44.2 |
| Golden H. | GH0272XF | RR2XF | 0.2 | 9/9 | 19 | 18.2 | 32.2 | 30.1 | -- | 37.2 |
| Golden H. | GH0325E3 | Enlist E3 | 0.3 | 9/9 | 19 | 17.9 | 31.1 | 31.2 | 53.5 | 38.3 |
| Golden H. | GH0452E3 | Enlist E3 | 0.4 | 9/13 | 19 | 17.3 | 34.3 | 26.3 | -- | 40.1 |
| Innkvictis | A0338X | RR2X | 0.3 | 9/8 | 18 | 16.9 | 32.0 | 32.2 | -- | 43.5 |
| Innkvictis | B0330E | Enlist E3 | 0.3 | 9/14 | 18 | 17.9 | 32.6 | 26.1 | -- | 37.7 |
| Integra | 40201N | Enlist E3 | 0.2 | 9/14 | 18 | 17.8 | 32.5 | 28.8 | 51.2 | 41.3 |
| Integra | 40300N | Enlist E3 | 0.3 | 9/9 | 19 | 17.4 | 32.1 | 27.9 | -- | 40.3 |
| Integra | 50309N | RR2X | 0.3 | 9/9 | 18 | 16.4 | 32.9 | 30.2 | 49.9 | 43.6 |
| Legacy | LS-00930 RR2X | RR2X | 00.9 | 9/7 | 16 | 17.7 | 33.4 | 22.5 | -- | 35.0 |
| Legacy | LS012-21E | Enlist E3 | 0.1 | 9/9 | 20 | 17.4 | 32.8 | 37.2 | -- | 46.1 |
| Legacy | LS-0239N RR2X | RR2X | 0.2 | 9/10 | 18 | 17.6 | 30.6 | 23.3 | 48.4 | 39.4 |
| Legacy | LS-0320E | Enlist E3 | 0.4 | 9/14 | 20 | 17.4 | 32.3 | 29.7 | 52.2 | 38.2 |
| Legacy | LS042-21E | Enlist E3 | 0.4 | 9/13 | 19 | 17.3 | 33.0 | 28.8 | -- | 40.9 |
| Legacy | LS-0429 | Enlist E3 | 0.4 | 9/15 | 20 | 17.4 | 34.1 | 26.6 | -- | 38.2 |
| LG Seeds | LGS00663RX | RR2X | 00.6 | 9/1 | 17 | 17.9 | 31.5 | 24.4 | 47.8 | 34.1 |
| LG Seeds | LGS00838XF | RR2XF | 00.8 | 9/6 | 20 | 17.5 | 33.3 | 23.3 | -- | 34.5 |
| LG Seeds | LGS0111RX | RR2X | 0.1 | 9/9 | 22 | 17.7 | 33.4 | 28.0 | 49.2 | 41.8 |
| LG Seeds | LGS0355RX | RR2X | 0.3 | 9/10 | 18 | 17.7 | 31.5 | 29.7 | 46.5 | 41.8 |
| LG Seeds | LGS0400RX | RR2X | 0.4 | 9/13 | 21 | 17.7 | 30.9 | 33.3 | 55.1 | 47.5 |
| NDSU | 21ND008GT20 | GT | 00.8 | 8/31 | 17 | 17.8 | 32.1 | 18.5 | -- | 28.5 |
| NDSU | ND17009GT | GT | 00.9 | 9/5 | 18 | 18.2 | 33.2 | 23.6 | 44.5 | 34.4 |
| Peterson | 22XF03 | RR2XF | 0.3 | 9/7 | 21 | 18.1 | 32.0 | 29.1 | -- | 40.9 |
| Pioneer | P00A49X | RR2X | 0.0 | 9/5 | 20 | 18.4 | 32.3 | 27.5 | -- | -- |
| Pioneer | P01A84X | RR2X | 0.1 | 9/10 | 19 | 17.8 | 32.5 | 27.2 | 48.5 | -- |
| Pioneer | P01T92E | Enlist E3 | 0.1 | 9/7 | 17 | 18.6 | 31.0 | 22.6 | -- | -- |
| Pioneer | P03A17X | RR2X | 0.2 | 9/10 | 19 | 18.5 | 31.4 | 29.7 | 48.4 | -- |
| Pioneer | P03A26X | RR2X | 0.3 | 9/11 | 21 | 17.4 | 32.3 | 28.5 | 49.0 | -- |
| Pioneer | P03T87E | Enlist E3 | 0.3 | 9/16 | 18 | 17.1 | 34.0 | 28.1 | -- | -- |
| Proseed | EL90-33N | Enlist E3 | 0.3 | 9/8 | 18 | 17.3 | 31.6 | 27.8 | -- | -- |
| Proseed | XT20-07 | RR2X | 00.7 | 8/31 | 18 | 18.6 | 30.3 | 20.6 | 46.1 | -- |
| Proseed | XT20-40 | RR2X | 0.4 | 9/14 | 18 | 17.2 | 33.0 | 29.3 | -- | -- |
| Proseed | XT80-20N | RR2X | 0.2 | 9/9 | 18 | 16.8 | 32.4 | 29.7 | -- | -- |
| REA | R0112XF | RR2XF | 0.1 | 9/7 | 23 | 18.5 | 31.4 | 28.4 | -- | 40.8 |
| REA | RX00912 | RR2X | 00.9 | 9/3 | 18 | 18.5 | 30.3 | 24.7 | -- | 32.1 |
| REA | RX0411 | RR2X | 0.4 | 9/13 | 22 | 18.0 | 30.7 | 32.8 | 54.7 | 43.0 |
| Stine | 002EE06 | Enlist E3 | 00.6 | 8/28 | 16 | 17.6 | 32.8 | 7.0 | -- | 18.2 |
| Stine | 01EA63 | Enlist E3 | 0.0 | 9/10 | 18 | 17.1 | 32.9 | 25.0 | -- | 35.5 |
| Stine | 01EE03 | Enlist E3 | 0.1 | 9/12 | 20 | 17.9 | 32.4 | 28.2 | -- | 40.6 |
| Mean | | | | 9/9 | 19 | 17.7 | 32.3 | 27.3 | 50.1 | 39.1 |
| CV % | | | | 1.1 | 7.6 | -- | -- | 9.5 | -- | -- |
| LSD 0.05 | | | | 1.1 | 1.2 | -- | -- | 2.2 | -- | -- |
| LSD 0.10 | | | | 0.9 | 1.0 | -- | -- | 1.9 | -- | -- |

Table 25. 2021 Soybean - Enlist, GT, RR and Xtend - Park River (Langdon REC) - Authors, B. Hanson, L. Henry and J. Faul (2 of 2).

| Company/ Brand | Variety | Herbicide Trait | Maturity Group | Maturity ¹ (date) | Plant Height (inch) | Seed Oil (%) | Seed Protein (%) | Seed Yield (bu/a) | | |
|-------------------|------------|--------------------|-------------------|---------------------------------|---------------------------|--------------------|------------------------|----------------------|------------|--------------------------|
| | | | | | | | | 2021 | 2-yr. Avg. | 2-site avg. ² |
| Stine | 03EB02 | Enlist E3 | 0.2 | 9/10 | 17 | 17.6 | 30.9 | 27.2 | -- | 40.4 |
| Syng NK | NK009-T1XF | RR2XF | 00.9 | 9/6 | 19 | 18.4 | 32.4 | 25.0 | -- | 38.2 |
| Syng NK | NK04-G8E3 | Enlist E3 | 0.4 | 9/14 | 18 | 17.1 | 35.0 | 24.7 | -- | -- |
| Syng NK | S008-E3 | Enlist E3 | 008 | 9/3 | 20 | 18.0 | 31.6 | 25.6 | -- | -- |
| Syng NK | S01-C4X | RR2X | 0.1 | 9/8 | 19 | 17.3 | 32.7 | 27.0 | 49.5 | 38.5 |
| Syng NK | S04-Q7X | RR2X | 0.4 | 9/15 | 19 | 16.9 | 34.9 | 31.6 | -- | 43.5 |
| Thunder | SB8001 | RR2X | 0.1 | 9/8 | 17 | 17.6 | 33.4 | 24.6 | 52.4 | 36.9 |
| Thunder | SB8104N | RR2X | 0.4 | 9/14 | 18 | 17.1 | 31.5 | 30.2 | 53.3 | 43.0 |
| Thunder | SB87009 | RR2X | 00.9 | 9/4 | 19 | 17.2 | 32.7 | 25.1 | -- | 36.7 |
| Thunder | SB8903N | RR2X | 0.3 | 9/8 | 19 | 17.2 | 31.1 | 31.5 | 48.7 | 44.5 |
| Thunder | TX82008N | RR2XF | 00.8 | 9/6 | 19 | 18.2 | 32.4 | 23.6 | -- | 35.1 |
| Mean | | | | 9/9 | 19 | 17.7 | 32.3 | 27.3 | 50.1 | 39.1 |
| CV % | | | | 1.1 | 7.6 | -- | -- | 9.5 | -- | -- |
| LSD 0.05 | | | | 1.1 | 1.2 | -- | -- | 2.2 | -- | -- |
| LSD 0.10 | | | | 0.9 | 1.0 | -- | -- | 1.9 | -- | -- |

Planted: May 17. Harvested: Sept. 29. Previous crop: wheat.

¹Date of physiological maturity at R7 stage (one pod on the main stem is mature brown or tan color).²2-site average Walsh County (Park River) and Nelson County (Pekin).**Table 26. 2021 Soybean - Conventional - Park River (Langdon REC) - Authors, B. Hanson, L. Henry and J. Faul.**

| Company/ Brand | Variety | Maturity Group | Maturity ¹ (date) | Plant Height (inch) | Shatter ³ (0-9) | Seed Oil (%) | Seed Protein (%) | Seed Yield (bu/a) | | |
|----------------------------|--------------|-------------------|---------------------------------|---------------------------|-------------------------------|--------------------|------------------------|----------------------|------------|--------------------------|
| | | | | | | | | 2021 | 2-yr. Avg. | 2-site Avg. ² |
| Conventional | | | | | | | | | | |
| Legacy | LS0090-20 | 00.9 | 8/31 | 16 | 0 | 17.6 | 34.8 | 22.7 | 39.1 | 36.3 |
| Legacy | LS020-20 | 0.2 | 9/2 | 20 | 1.3 | 18.0 | 32.8 | 24.6 | 42.0 | 37.4 |
| Legacy | LS004-21 | 00.4 | 8/29 | 22 | 3.4 | 18.9 | 33.3 | 17.8 | -- | 30.6 |
| Legacy | LS005-21 | 00.5 | 8/30 | 16 | 3.8 | 15.7 | 39.7 | 19.3 | -- | 31.5 |
| Legacy | LS006-21 | 00.6 | 8/29 | 17 | 0.5 | 18.3 | 33.3 | 21.9 | -- | 36.6 |
| Legacy | LS040-21 | 0.4 | 9/5 | 21 | 0.2 | 17.0 | 34.7 | 29.0 | -- | -- |
| NDSU | ND Rolette | 00.9 | 9/6 | 16 | 0 | 18.7 | 32.1 | 26.5 | 48.0 | 42.4 |
| NDSU | ND Benson | 0.4 | 9/14 | 18 | 0 | 17.4 | 34.7 | 35.8 | 48.5 | 44.2 |
| Richland | MK0249 | 0.2 | 9/8 | 17 | 0 | 17.4 | 32.1 | 28.3 | 41.7 | 38.8 |
| Sevita | Astor | 0.3 | 9/8 | 17 | 0.8 | 18.0 | 35.2 | 26.4 | 44.1 | 40.1 |
| Roundup Ready Check | | | | | | | | | | |
| | RR2X Check#1 | 00.5 | 8/31 | 18 | 0 | 18.2 | 31.8 | 29.1 | 47.1 | 41.1 |
| | RR2Y Check#2 | 00.9 | 9/6 | 20 | 0 | 17.7 | 32.1 | 34.4 | 55.6 | 47.3 |
| | RR2Y Check#3 | 00.8 | 8/31 | 17 | 1.2 | 18.0 | 31.4 | 27.1 | 46.8 | 40.5 |
| Mean | | | 9/4 | 18 | 0.9 | 17.7 | 33.7 | 26.4 | 45.9 | 38.9 |
| CV % | | | 0.7 | 6.8 | 45.5 | 1.8 | 2.2 | 6.4 | -- | -- |
| LSD 0.05 | | | 0.7 | 1.1 | 0.2 | 0.7 | 1.5 | 1.7 | -- | -- |
| LSD 0.10 | | | 0.6 | 0.9 | 0.2 | 0.6 | 1.3 | 1.4 | -- | -- |

Planted: May 17. Harvested: Sept. 29. Previous crop: wheat.

¹Date of physiological maturity at R7 stage (one pod on the main stem is mature brown or tan color).²A 2-site average of conventional trials at Langdon REC and Walsh County (Park River).³Relative Rating 0-9, just prior to harvest; 0 = none.

Table 27. 2021 Soybean - Enlist, GT, RR and Xtend - Cavalier (Langdon REC) - Authors, B. Hanson, L. Henry and J. Faul (1 of 2).

| Company/ Brand | Variety | Herbicide Trait | Maturity Group | Maturity ¹ (date) | Plant Height | Seed Oil | Seed Protein | Seed Yield ------(bu/a)----- | | |
|-------------------|----------------|--------------------|-------------------|---------------------------------|-----------------|-------------|-----------------|---------------------------------|------------|--------------------------|
| | | | | | (inches) | (%) | (%) | 2021 | 2-yr. Avg. | 2-site Avg. ² |
| BioGene | BG8000 | RR2X | 00.9 | 9/6 | 26 | 17.3 | 32.0 | 49.5 | 52.7 | 54.5 |
| BioGene | BG8006 | RR2X | 00.6 | 8/30 | 23 | 17.4 | 32.3 | 42.3 | -- | 51.8 |
| BioGene | BG9021E3 | Enlist E3 | 0.2 | 9/13 | 23 | 16.1 | 32.3 | 44.8 | -- | 53.6 |
| Dahlman | 1102E3N | Enlist E3 | 0.2 | 9/11 | 25 | 16.5 | 32.3 | 47.6 | 55.3 | 56.9 |
| Dahlman | 1201E3N | Enlist E3 | 0.1 | 9/12 | 23 | 16.3 | 32.6 | 44.7 | -- | 54.6 |
| Dyna-Gro | S009XF52 | RR2XF | 00.9 | 8/31 | 24 | 17.6 | 31.8 | 37.1 | -- | 46.5 |
| Dyna-Gro | S009XT68 | RR2X | 00.9 | 9/4 | 24 | 16.3 | 32.8 | 51.1 | 58.2 | 57.2 |
| Dyna-Gro | S02EN71 | Enlist E3 | 0.2 | 9/12 | 25 | 17.0 | 32.1 | 49.2 | -- | 58.4 |
| Golden H. | GH00833E3 | Enlist E3 | 00.8 | 9/7 | 23 | 17.0 | 31.1 | 42.4 | 50.6 | 54.1 |
| Golden H. | GH00982XF | RR2XF | 00.9 | 9/5 | 23 | 16.7 | 32.8 | 44.1 | -- | 53.6 |
| Golden H. | GH0272XF | RR2XF | 0.2 | 9/10 | 24 | 17.2 | 31.5 | 51.7 | -- | 55.4 |
| Innvictis | A00918X | RR2X | 00.9 | 9/4 | 24 | 16.5 | 33.6 | 42.3 | -- | 51.5 |
| Innvictis | A00979X | RR2X | 00.9 | 9/11 | 23 | 16.9 | 32.9 | 45.4 | -- | 56.0 |
| Integra | 40089N | Enlist E3 | 00.8 | 9/6 | 24 | 17.2 | 32.0 | 43.1 | 52.7 | 54.0 |
| Integra | 50081N | RR2X | 00.8 | 8/31 | 24 | 16.3 | 34.4 | 35.8 | 47.2 | 44.3 |
| Legacy | LS-00639N RR2X | RR2X | 00.6 | 8/31 | 24 | 17.2 | 31.6 | 37.6 | 47.9 | 48.5 |
| Legacy | LS0094-21 XF | RR2XF | 00.9 | 8/30 | 23 | 17.8 | 31.4 | 38.9 | -- | 45.7 |
| Legacy | LS-00930 RR2X | RR2X | 00.9 | 9/10 | 21 | 16.8 | 32.5 | 50.3 | 55.0 | 56.8 |
| Legacy | LS012-20E | Enlist E3 | 0.1 | 9/11 | 22 | 16.4 | 32.4 | 46.5 | 54.6 | 53.8 |
| Legacy | LS012-21E | Enlist E3 | 0.1 | 9/14 | 22 | 17.1 | 32.3 | 50.7 | -- | 58.7 |
| Legacy | LS-0239N RR2X | RR2X | 0.2 | 9/11 | 26 | 16.5 | 31.7 | 54.4 | 58.8 | 60.5 |
| LG Seeds | LGS00663RX | RR2X | 00.6 | 8/31 | 23 | 16.9 | 32.1 | 42.0 | 51.2 | 51.9 |
| LG Seeds | LGS00838XF | RR2XF | 00.8 | 9/5 | 24 | 17.1 | 32.3 | 40.5 | -- | 49.2 |
| LG Seeds | LGS0111RX | RR2X | 0.1 | 9/11 | 26 | 16.5 | 32.7 | 49.3 | 53.6 | 58.3 |
| NDSU | 21ND008GT20 | GT | 00.8 | 9/3 | 24 | 17.1 | 32.5 | 41.1 | -- | 50.3 |
| NDSU | ND17009GT | GT | 00.9 | 9/9 | 24 | 16.8 | 34.2 | 41.4 | 48.2 | 48.8 |
| P3 Genetics | 2002E | Enlist E3 | 0.2 | 9/13 | 20 | 16.3 | 32.9 | 45.2 | -- | 53.1 |
| P3 Genetics | 2201E | Enlist E3 | 0.1 | 9/15 | 22 | 16.9 | 32.6 | 51.5 | -- | 56.0 |
| Peterson | 19EN008 | Enlist E3 | 00.8 | 9/7 | 24 | 17.4 | 31.0 | 45.7 | 52.9 | 56.8 |
| Peterson | 21X007 | RR2X | 00.7 | 8/30 | 26 | 17.4 | 30.5 | 41.7 | 50.6 | 55.2 |
| Peterson | 22XF009 | RR2XF | 00.9 | 9/1 | 26 | 17.0 | 32.0 | 41.4 | -- | 48.0 |
| Pioneer | P009T18E | Enlist E3 | 00.9 | 9/7 | 23 | 17.6 | 31.6 | 43.3 | -- | 53.0 |
| Pioneer | P00A49X | RR2X | 0.0 | 9/7 | 26 | 16.9 | 32.8 | 46.1 | 51.7 | 54.3 |
| Pioneer | P01T92E | Enlist E3 | 0.1 | 9/11 | 21 | 17.9 | 31.0 | 37.9 | -- | 49.5 |
| Pioneer | P03A17X | RR2X | 0.2 | 9/12 | 24 | 17.7 | 31.2 | 48.9 | 53.1 | -- |
| Pioneer | P03A26X | RR2X | 0.3 | 9/15 | 27 | 17.2 | 31.1 | 54.3 | 53.1 | -- |
| Pioneer | P03T87E | Enlist E3 | 0.3 | 9/14 | 20 | 16.6 | 31.2 | 43.3 | -- | -- |
| REA | R0112XF | RR2XF | 0.1 | 9/11 | 28 | 17.0 | 32.7 | 47.6 | -- | 58.0 |
| REA | RX00912 | RR2X | 00.9 | 9/5 | 22 | 16.9 | 32.2 | 43.9 | -- | 51.7 |
| Stine | 002EE06 | Enlist E3 | 00.6 | 8/25 | 20 | 17.1 | 32.5 | 26.5 | -- | 37.0 |
| Stine | 01EA63 | Enlist E3 | 0.0 | 9/11 | 21 | 16.4 | 32.4 | 42.8 | -- | 55.2 |
| Stine | 01EE03 | Enlist E3 | 0.1 | 9/13 | 22 | 16.9 | 32.7 | 50.7 | -- | 57.4 |
| Stine | 03EB02 | Enlist E3 | 0.2 | 9/11 | 23 | 16.7 | 31.7 | 46.4 | -- | 54.6 |
| Syng NK | NK009-T1XF | RR2XF | 00.9 | 9/5 | 23 | 17.3 | 31.9 | 46.3 | -- | 54.8 |
| Syng NK | S006-R7X | RR2X | 00.6 | 8/29 | 22 | 17.9 | 31.8 | 43.1 | -- | 52.1 |
| Syng NK | S008-E3 | Enlist E3 | 008 | 9/8 | 25 | 17.0 | 31.9 | 49.9 | 57.5 | 57.1 |
| Thunder | SB8001 | RR2X | 0.1 | 9/11 | 22 | 16.6 | 34.3 | 48.2 | 54.8 | 55.0 |
| Thunder | SB81006 | RR2X | 00.6 | 8/30 | 24 | 17.5 | 30.5 | 40.7 | 51.7 | 48.7 |
| Mean | | | | 9/7 | 23 | 17.0 | 32.2 | 44.8 | 52.8 | 53.2 |
| CV % | | | | 1.3 | 6.7 | 2.0 | 2.0 | 7.4 | -- | -- |
| LSD 0.05 | | | | 1.3 | 1.3 | 0.7 | 1.3 | 2.8 | -- | -- |
| LSD 0.10 | | | | 1.1 | 1.1 | 0.6 | 1.1 | 2.4 | -- | -- |

Table 27. 2021 Soybean - Enlist, GT, RR and Xtend - Cavalier (Langdon REC) - Authors, B. Hanson, L. Henry and J. Faul (2 of 2).

| Company/ Brand | Variety | Herbicide Trait | Maturity Group | Maturity ¹ (date) | Plant Height (inches) | Seed Oil (%) | Seed Protein (%) | Seed Yield | | |
|-------------------|----------|--------------------|-------------------|---------------------------------|-----------------------------|--------------------|------------------------|------------|------------|------------------------------|
| | | | | | | | | 2021 | 2-yr. Avg. | 2-yr. site Avg. ² |
| Thunder | SB87009 | RR2X | 00.9 | 9/5 | 24 | 16.0 | 33.2 | 46.2 | 51.8 | 54.2 |
| Thunder | SB88007N | RR2X | 00.7 | 9/1 | 24 | 17.3 | 31.8 | 42.5 | 47.8 | 51.4 |
| Thunder | TE71008N | Enlist E3 | 00.8 | 9/8 | 24 | 17.0 | 31.3 | 48.2 | 55.2 | 55.0 |
| Thunder | TX82008N | RR2XF | 00.8 | 9/5 | 22 | 17.3 | 32.0 | 45.9 | -- | 54.5 |
| Mean | | | | 9/7 | 23 | 17.0 | 32.2 | 44.8 | 52.8 | 53.2 |
| CV % | | | | 1.3 | 6.7 | 2.0 | 2.0 | 7.4 | -- | -- |
| LSD 0.05 | | | | 1.3 | 1.3 | 0.7 | 1.3 | 2.8 | -- | -- |
| LSD 0.10 | | | | 1.1 | 1.1 | 0.6 | 1.1 | 2.4 | -- | -- |

Planted: May 14. Harvested: Sept. 28. Previous crop: soybean.

¹Date of physiological maturity at R7 stage (one brown pod on the main stem obtains mature brown or tan color).²2-site average of Langdon REC and Pembina County (Cavalier).**Table 28. 2021 Soybean - Enlist, GT, RR and Xtend - Grand Forks County.
Author K. Landeis.**

| Company/ Brand | Variety | Maturity Group | Seed Yield (bu/a) |
|-------------------|-------------|-------------------|-------------------------|
| Channel | 0122 RXF | 0.1 | 64.0 |
| Channel | 0320 R2X | 0.3 | 64.5 |
| Channel | 0622 RXF | 0.6 | 61.0 |
| Channel | 0721 RXF | 0.7 | 67.0 |
| Dyna-Gro | S009XF52 | 00.9 | 52.9 |
| Dyna-Gro | S04XF32 | 0.4 | 69.7 |
| Dyna-Gro | S05EN82 | 0.5 | 66.3 |
| Integra | 40511 | 0.4 | 62.8 |
| Integra | 70212 | 0.2 | 57.8 |
| Integra | 50309N | 0.3 | 67.0 |
| Integra | 70082N | 00.8 | 56.2 |
| Legacy | LS021-12 E | 0.1 | 63.6 |
| Legacy | LS0320 E | 0.3 | 63.0 |
| Legacy | LS042-21 E | 0.4 | 56.9 |
| Legacy | LS062-21 E | 0.6 | 69.5 |
| LG Seeds | LGS0355RX | 0.3 | 71.4 |
| LG Seeds | LGS0400RX | 0.4 | 63.8 |
| NDSU | ND17009GT | 00.9 | 52.0 |
| NDSU | ND21008GT20 | 00.8 | 57.0 |
| REA | R0112XF | 0.1 | 57.2 |
| REA | R0632XF | 0.6 | 72.5 |
| REA | RX0228 | 0.2 | 62.6 |
| REA | RX0411 | 0.4 | 57.4 |
| Stine | 01EE03 | 0.1 | 60.2 |
| Stine | 02EE30 | 0.2 | 68.1 |
| Stine | 04EE06 | 0.4 | 68.7 |
| Stine | 05EA23 | 0.5 | 65.6 |
| Stine | 07EC06 | 0.7 | 71.2 |
| Syng NK | NK02M4XF | 0.2 | 66.3 |
| Syng NK | S04-Q7X | 0.4 | 62.5 |
| Mean | | | 63.3 |
| CV % | | | 8.9 |
| LSD 0.05 | | | 7.9 |
| LSD 0.10 | | | 6.6 |

Planted: May 17. Harvested: Oct. 7. Previous crop: soybean.

Table 29. 2021 Soybean - Enlist, GT, RR and Xtend - Pekin (Langdon REC) - Authors, B. Hanson, L. Henry and J. Faul.

| Company/ Brand | | Herbicide Trait | Maturity Group | Maturity ¹ (date) | Plant Height (inch) | Seed Oil (%) | Seed Protein (%) | Seed Yield ------(bu/a)----- 2021 2-yr. Avg. 2-site Avg. ² | | |
|-------------------|---------------|--------------------|-------------------|---------------------------------|---------------------------|--------------------|------------------------|---|------|------|
| Dahlman | 6004XN | RR2X | 0.4 | 9/15 | 25 | 17.0 | 33.6 | 57.6 | 58.8 | 45.2 |
| Dahlman | 7203XF | RR2XF | 0.3 | 9/9 | 28 | 16.3 | 35.4 | 54.8 | -- | 42.7 |
| Dyna-Gro | S02EN71 | Enlist E3 | 0.2 | 9/15 | 20 | 16.5 | 33.5 | 49.5 | 54.1 | 37.0 |
| Dyna-Gro | S04XF32 | RR2XF | 0.4 | 9/16 | 31 | 16.3 | 33.7 | 53.8 | -- | 44.3 |
| Dyna-Gro | S04XT91 | RR2X | 0.4 | 9/12 | 24 | 17.4 | 32.7 | 55.0 | 59.2 | 44.2 |
| Golden H. | GH0272XF | RR2XF | 0.2 | 9/9 | 24 | 16.7 | 34.4 | 44.2 | -- | 37.2 |
| Golden H. | GH0325E3 | Enlist E3 | 0.3 | 9/11 | 21 | 16.5 | 32.7 | 45.3 | 51.9 | 38.3 |
| Golden H. | GH0452E3 | Enlist E3 | 0.4 | 9/13 | 25 | 16.3 | 35.2 | 54.0 | -- | 40.1 |
| Innvictis | A0338X | RR2X | 0.3 | 9/14 | 26 | 16.1 | 32.7 | 54.7 | -- | 43.5 |
| Innvictis | B0330E | Enlist E3 | 0.3 | 9/14 | 18 | 16.4 | 34.3 | 49.3 | -- | 37.7 |
| Integra | 40201N | Enlist E3 | 0.2 | 9/16 | 17 | 16.8 | 33.3 | 53.8 | 55.4 | 41.3 |
| Integra | 40300N | Enlist E3 | 0.3 | 9/10 | 23 | 16.9 | 32.4 | 52.7 | -- | 40.3 |
| Integra | 50309N | RR2X | 0.3 | 9/13 | 26 | 16.2 | 32.5 | 57.0 | 56.9 | 43.6 |
| Legacy | LS-00930 RR2X | RR2X | 00.9 | 9/6 | 21 | 17.1 | 34.4 | 47.4 | -- | 35.0 |
| Legacy | LS012-21E | Enlist E3 | 0.1 | 9/15 | 23 | 17.1 | 33.4 | 55.0 | -- | 46.1 |
| Legacy | LS-0239N RR2X | RR2X | 0.2 | 9/14 | 25 | 16.0 | 33.7 | 55.6 | 55.9 | 39.4 |
| Legacy | LS-0320E | Enlist E3 | 0.4 | 9/10 | 20 | 16.9 | 32.4 | 46.7 | 52.3 | 38.2 |
| Legacy | LS042-21E | Enlist E3 | 0.4 | 9/12 | 23 | 17.0 | 31.6 | 53.0 | -- | 40.9 |
| Legacy | LS-0429 | Enlist E3 | 0.4 | 9/14 | 26 | 17.0 | 34.6 | 49.7 | 52.9 | 38.2 |
| LG Seeds | LGS00663RX | RR2X | 00.6 | 9/5 | 23 | 16.5 | 34.2 | 43.7 | 50.6 | 34.1 |
| LG Seeds | LGS00838XF | RR2XF | 00.8 | 9/6 | 26 | 16.9 | 33.4 | 45.7 | -- | 34.5 |
| LG Seeds | LGS0111RX | RR2X | 0.1 | 9/9 | 29 | 16.5 | 34.7 | 55.5 | 56.2 | 41.8 |
| LG Seeds | LGS0355RX | RR2X | 0.3 | 9/12 | 23 | 16.0 | 33.6 | 54.0 | 55.4 | 41.8 |
| LG Seeds | LGS0400RX | RR2X | 0.4 | 9/12 | 28 | 16.9 | 32.7 | 61.6 | 62.3 | 47.5 |
| NDSU | 21ND008GT20 | GT | 00.8 | 9/4 | 20 | 17.3 | 33.0 | 38.6 | -- | 28.5 |
| NDSU | ND17009GT | GT | 00.9 | 9/7 | 22 | 17.4 | 35.5 | 45.2 | 48.8 | 34.4 |
| Peterson | 22XF03 | RR2XF | 0.3 | 9/12 | 29 | 16.5 | 34.9 | 52.7 | -- | 40.9 |
| REA | R0112XF | RR2XF | 0.1 | 9/8 | 31 | 16.8 | 33.7 | 53.1 | -- | 40.8 |
| REA | RX00912 | RR2X | 00.9 | 9/4 | 23 | 16.6 | 33.9 | 39.4 | -- | 32.1 |
| REA | RX0411 | RR2X | 0.4 | 9/12 | 31 | 16.4 | 33.5 | 53.2 | 56.1 | 43.0 |
| Stine | 002EE06 | Enlist E3 | 00.6 | 9/3 | 16 | 16.5 | 33.0 | 29.4 | -- | 18.2 |
| Stine | 01EA63 | Enlist E3 | 0.0 | 9/7 | 21 | 16.7 | 33.2 | 46.0 | 51.4 | 35.5 |
| Stine | 01EE03 | Enlist E3 | 0.1 | 9/12 | 24 | 16.9 | 33.6 | 53.0 | -- | 40.6 |
| Stine | 03EB02 | Enlist E3 | 0.2 | 9/9 | 23 | 16.6 | 32.3 | 53.6 | -- | 40.4 |
| Syng NK | NK009-T1XF | RR2XF | 00.9 | 9/6 | 25 | 16.9 | 33.0 | 51.3 | -- | 38.2 |
| Syng NK | S01-C4X | RR2X | 0.1 | 9/6 | 27 | 16.7 | 32.9 | 50.0 | 54.3 | 38.5 |
| Syng NK | S04-Q7X | RR2X | 0.4 | 9/13 | 23 | 15.7 | 35.1 | 55.4 | 57.9 | 43.5 |
| Thunder | SB8001 | RR2X | 0.1 | 9/8 | 20 | 17.0 | 34.2 | 49.2 | 53.8 | 36.9 |
| Thunder | SB8104N | RR2X | 0.4 | 9/12 | 23 | 16.7 | 33.2 | 55.7 | 59.6 | 43.0 |
| Thunder | SB87009 | RR2X | 00.9 | 9/8 | 23 | 15.7 | 35.0 | 48.2 | -- | 36.7 |
| Thunder | SB8903N | RR2X | 0.3 | 9/13 | 27 | 16.2 | 32.7 | 57.5 | 57.3 | 44.5 |
| Thunder | TX82008N | RR2XF | 00.8 | 9/8 | 22 | 16.8 | 34.6 | 46.6 | -- | 35.1 |
| Mean | | | | 9/10 | 24 | 16.6 | 33.6 | 50.7 | 55.3 | 39.1 |
| CV % | | | | 1.1 | 7.9 | 1.9 | 1.8 | 6.2 | -- | -- |
| LSD 0.05 | | | | 1.2 | 1.7 | 0.6 | 1.2 | 2.7 | -- | -- |
| LSD 0.10 | | | | 1.0 | 1.4 | 0.5 | 1.0 | 2.3 | -- | -- |

Planted: May 18. Harvested: Oct. 5. Previous crop: wheat.

¹Date of physiological maturity at R7 stage (one brown pod on the main stem obtains mature brown or tan color).²A 2-site average of our southern region, Walsh County (Park River) and Nelson County (Pekin).

Table 30. 2021 Soybean - Enlist, GT, RR and Xtend - Minot (North Central REC) - Authors, E. Eriksmoen, A. Kraklau and J. Hansen.

| Company/ | | Herbicide | Maturity | IDC | | Plant | Seed | Seed | Test | Seed Yield | |
|-----------|---------------|--------------------|----------|---------------------|-----------------------|----------|---------|------|---------|-----------------|-------------------|
| Brand | Variety | Trait ¹ | Group | Rating ² | Maturity ³ | Height | Protein | Oil | Weight | 2020 | 2021 ⁴ |
| | | | | (1-5) | (date) | (inches) | (%) | (%) | (lb/bu) | -----(bu/a)---- | |
| Dairyland | DSR-0119E | Enlist E3 | 0.1 | 2.3 | 9/6 | 19 | 30.2 | 17.6 | 57.8 | 39.7 | 20.5 |
| Dyna-Gro | S009XF52 | RR2XF | 00.9 | 3.0 | 9/2 | 16 | 31.1 | 17.8 | 57.5 | -- | 15.3 |
| Dyna-Gro | S009XT68 | Xtend | 00.9 | 2.8 | 9/5 | 19 | 31.9 | 16.5 | 58.2 | 36.9 | 20.2 |
| Dyna-Gro | S03XT29 | Xtend | 0.3 | 1.2 | 9/7 | 16 | 31.6 | 16.6 | 58.8 | 37.0 | 20.5 |
| Golden H. | GH00833E3 | Enlist E3 | 00.8 | 1.8 | 9/8 | 23 | 31.7 | 17.2 | 57.7 | 34.2 | 21.8 |
| Golden H. | GH00982XF | RR2XF | 00.9 | 3.1 | 9/7 | 19 | 31.8 | 17.1 | 57.5 | -- | 24.6 |
| Golden H. | GH0272XF | RR2XF | 0.2 | 2.6 | 9/9 | 20 | 30.6 | 18.0 | 57.9 | -- | 27.5 |
| Hefty | H01x0 | Xtend | 0.1 | -- | 9/7 | 15 | 32.1 | 17.4 | 57.7 | -- | 21.4 |
| Hefty | H02E1 | Enlist E3 | 0.2 | -- | 9/9 | 19 | 31.1 | 17.6 | 56.3 | -- | 14.7 |
| Integra | 40201N | Enlist E3 | 0.2 | 3.3 | 9/9 | 16 | 32.2 | 17.0 | 57.6 | 34.4 | 16.9 |
| Integra | 40300N | Enlist E3 | 0.3 | 2.3 | 9/7 | 19 | 31.1 | 17.1 | 57.8 | 30.0 | 22.9 |
| Integra | 50309N | Xtend | 0.3 | 1.4 | 9/9 | 19 | 30.7 | 16.6 | 58.1 | 33.1 | 25.2 |
| Integra | 70212 XF | RR2XF | 0.2 | 2.5 | 9/7 | 20 | 31.6 | 17.5 | 57.9 | -- | 15.2 |
| Legacy | LS-00930 RR2X | RR2X | 00.9 | 2.6 | 9/6 | 16 | 32.3 | 17.4 | 57.8 | 34.1 | 19.0 |
| Legacy | LS012-20E | Enlist E3 | 0.1 | 2.5 | 9/5 | 16 | 31.5 | 16.9 | 57.7 | 31.2 | 21.3 |
| Legacy | LS012-21E | Enlist E3 | 0.1 | 2.3 | 9/9 | 17 | 31.9 | 17.4 | 56.8 | -- | 20.3 |
| Legacy | LS-0239 RR2X | RR2X | 0.2 | 1.1 | 9/8 | 19 | 30.7 | 16.5 | 58.3 | 32.0 | 29.3 |
| Legacy | LS-0320N E | Enlist E3 | 0.3 | 2.7 | 9/7 | 17 | 31.1 | 17.3 | 58.0 | -- | 17.9 |
| LG Seeds | LGS00838XF | RR2XF | 00.8 | 3.2 | 9/5 | 19 | 31.5 | 17.4 | 57.7 | -- | 23.7 |
| LG Seeds | LGS0111RX | Xtend | 0.1 | 2.7 | 9/9 | 20 | 32.1 | 17.2 | 57.4 | 35.1 | 24.2 |
| LG Seeds | LGS0400RX | Xtend | 0.4 | 2.3 | 9/9 | 20 | 30.6 | 17.1 | 57.2 | 37.3 | 23.3 |
| MS Tech. | XO 0101E | Enlist E3 | 0.1 | -- | 9/7 | 18 | 31.7 | 16.9 | 57.2 | -- | 17.7 |
| MS Tech. | XO 0311E | Enlist E3 | 0.3 | -- | 9/8 | 18 | 32.5 | 16.6 | 57.5 | -- | 12.2 |
| NDSU | ND17009GT | GT | 00.9 | 3.8 | 9/9 | 20 | 34.1 | 17.2 | 59.5 | 27.1 | 20.0 |
| NDSU | ND21008GT20 | GT | 00.8 | 1.2 | 9/5 | 20 | 31.1 | 17.8 | 57.8 | -- | 20.3 |
| Proseed | XT60-40N | RR2X | 0.4 | 3.0 | 9/9 | 21 | 31.5 | 17.4 | 57.8 | -- | 21.3 |
| Proseed | XT80-20N | RR2X | 0.2 | 1.1 | 9/11 | 16 | 30.5 | 16.6 | 58.3 | -- | 24.8 |
| REA | RX00912 | RR2X | 00.9 | 3.1 | 9/7 | 19 | 31.5 | 17.3 | 57.7 | -- | 20.4 |
| REA | RX0411 | RR2X | 0.4 | 2.6 | 9/11 | 19 | 30.7 | 17.4 | 57.0 | -- | 19.6 |
| REA | R0112XF | RR2XF | 0.1 | 2.4 | 9/8 | 22 | 31.3 | 17.5 | 57.7 | -- | 21.8 |
| Stine | 003EB62 | Enlist E3 | 00.7 | -- | 9/6 | 18 | 31.8 | 17.3 | 58.2 | -- | 15.1 |
| Stine | 01EA63 | Enlist E3 | 00.9 | -- | 9/6 | 17 | 31.9 | 16.9 | 58.0 | -- | 16.6 |
| Stine | 01EE03 | Enlist E3 | 00.9 | -- | 9/8 | 16 | 31.8 | 17.2 | 56.8 | -- | 13.0 |
| Stine | 002EE06 | Enlist E3 | 00.6 | -- | 8/31 | 18 | 32.1 | 16.8 | 57.8 | -- | 9.5 |
| Syng NK | NK009-T1XF | RR2XF | 00.9 | 2.8 | 9/5 | 17 | 31.2 | 17.6 | 57.5 | -- | 19.0 |
| Syng NK | NK02-M4XF | RR2XF | 0.2 | 3.1 | 9/7 | 21 | 30.9 | 17.7 | 56.3 | -- | 20.4 |
| Syng NK | S006-R7X | Xtend | 00.6 | 3.0 | 9/4 | 16 | 31.1 | 18.0 | 57.9 | 33.5 | 23.7 |
| Syng NK | S008-E3 | Enlist E3 | 00.8 | 1.5 | 9/7 | 15 | 31.1 | 17.5 | 57.9 | -- | 19.9 |
| Syng NK | S02-E3 | Enlist E3 | 0.2 | 2.6 | 9/6 | 17 | 31.1 | 17.2 | 57.7 | -- | 15.0 |
| Syng NK | S02-F9X | Xtend | 0.2 | 3.2 | 9/10 | 16 | 30.7 | 17.0 | 58.8 | 36.4 | 22.8 |
| Thunder | TE71008N | Enlist E3 | 00.8 | 1.9 | 9/7 | 21 | 32.2 | 17.1 | 57.4 | 35.6 | 16.8 |
| Thunder | TX82008N | RR2XF | 00.8 | 3.7 | 9/7 | 20 | 31.4 | 17.5 | 57.8 | -- | 23.3 |
| Thunder | SB8001 | Xtend | 0.1 | 2.7 | 9/5 | 15 | 32.0 | 17.3 | 57.5 | 33.9 | 19.0 |
| Zinesto | Z0100E | Enlist E3 | 0.1 | -- | 9/9 | 19 | 31.8 | 16.9 | 57.3 | -- | 20.6 |
| Zinesto | Z0102E | Enlist E3 | 0.1 | -- | 9/11 | 15 | 30.6 | 16.9 | 57.8 | -- | 22.6 |
| Mean | | | | 2.6 | 9/7 | 18 | 31.5 | 17.2 | 57.7 | 34.2 | 20.0 |
| CV % | | | | 19 | 0.2 | 12.8 | 2.2 | 1.8 | 1.0 | 8.1 | 22.1 |
| LSD 0.05 | | | | 0.7 | 3 | 4.0 | 1.1 | 0.5 | 0.9 | 4.4 | 7.1 |
| LSD 0.10 | | | | 0.6 | 2 | 3.0 | 1.0 | 0.4 | 0.8 | 3.6 | 5.9 |

Planted: May 19. Harvested: Sept. 27. Previous crop: soybean.

¹Herbicide trait: GT= Glyphosate Tolerant, RR = Roundup Ready and X = Extend.²Iron deficiency chlorosis rating: 1-green, 3-yellow, 5-dead tissue.³Date of physiological maturity at R7 stage (one brown pod on the main stem obtains mature brown or tan color).⁴The 2021 trial sustained extreme drought. Data from this trial should be viewed with caution.

Table 31. 2021 Soybean - Enlist, GT, RR and Xtend - Mohall (North Central REC) - Authors, E. Eriksmoen, A. Kraklau and J. Hansen.

| Company/ Brand | Variety | Herbicide Trait ¹ | Maturity Group | IDC Rating ² | Plant Height | Seed Protein | Seed Oil | Test Weight | Seed Yield | |
|-------------------|---------------|---------------------------------|-------------------|----------------------------|-----------------|-----------------|-------------|----------------|--------------------|-------------------|
| | | | | | | | | | 2020 | 2021 ³ |
| | | | | | | | | | ----- (bu/a) ----- | |
| Croplan | RX00847 | Xtend | 00.8 | -- | 28 | 30.2 | 17.6 | 58.8 | -- | 29.0 |
| Croplan | RX00926 | Xtend | 00.9 | -- | 25 | 31.0 | 16.7 | 58.7 | -- | 29.8 |
| Dairyland | DSR-0119E | Enlist E3 | 0.1 | 2.3 | 28 | 33.3 | 17.0 | 60.2 | 35.3 | 30.4 |
| Golden H. | GH00982XF | RR2XF | 00.9 | 3.1 | 27 | 31.6 | 16.9 | 58.2 | -- | 40.6 |
| Golden H. | GH0272XF | RR2XF | 0.2 | 2.6 | 30 | 31.3 | 16.9 | 58.1 | -- | 44.1 |
| Hefty | H006E | Enlist E3 | 00.6 | -- | 22 | 31.8 | 16.1 | 59.0 | -- | 20.3 |
| Hefty | H008E1 | Enlist E3 | 00.8 | -- | 28 | 31.0 | 16.8 | 58.8 | -- | 34.2 |
| Hefty | H008x8 | Xtend | 00.8 | -- | 28 | 30.2 | 17.6 | 58.2 | -- | 28.9 |
| Hefty | H009E9 | Enlist E3 | 00.9 | -- | 24 | 31.5 | 16.4 | 57.1 | -- | 34.8 |
| Hefty | H009x7 | Xtend | 00.9 | -- | 27 | 32.3 | 15.9 | 58.8 | -- | 29.7 |
| Hefty | H01x0 | Xtend | 0.1 | -- | 22 | 32.5 | 16.5 | 57.7 | -- | 32.3 |
| Hefty | H02E1 | Enlist E3 | 0.2 | -- | 25 | 32.4 | 16.6 | 53.3 | -- | 32.7 |
| Hefty | H009XF | RR2XF | 00.9 | -- | 27 | 29.8 | 18.0 | 58.9 | -- | 26.0 |
| Integra | 40089N | Enlist E3 | 00.8 | 2.0 | 28 | 32.1 | 16.5 | 58.4 | 41.2 | 37.0 |
| Integra | 40201N | Enlist E3 | 0.2 | 3.3 | 22 | 32.3 | 16.3 | 56.0 | -- | 43.2 |
| Integra | 50081N | Xtend | 00.8 | 2.6 | 26 | 32.3 | 16.6 | 58.6 | 45.2 | 37.5 |
| Integra | 70082N XF | RR2XF | 00.8 | 3.5 | 27 | 32.5 | 16.6 | 57.9 | -- | 38.3 |
| Legacy | LS-00930 RR2X | RR2X | 00.9 | 2.6 | 23 | 32.6 | 16.5 | 57.5 | -- | 37.1 |
| Legacy | LS012-20E | Enlist E3 | 0.1 | 2.5 | 23 | 32.6 | 16.0 | 57.0 | -- | 36.7 |
| Legacy | LS012-21E | Enlist E3 | 0.1 | 2.3 | 26 | 32.9 | 16.5 | 53.8 | -- | 44.3 |
| Legacy | LS-0239 RR2X | RR2X | 0.2 | 1.1 | 24 | 30.8 | 16.4 | 59.0 | -- | 34.3 |
| Legacy | LS-0320N E | Enlist E3 | 0.3 | 2.7 | 25 | 32.2 | 16.2 | 57.8 | -- | 39.1 |
| LG Seeds | LGS00838XF | RR2XF | 00.8 | 3.2 | 29 | 32.2 | 16.3 | 58.0 | -- | 37.0 |
| LG Seeds | LGS0111RX | Xtend | 0.1 | 2.7 | 28 | 33.3 | 16.7 | 56.8 | 36.7 | 46.1 |
| MS Tech. | XO 0101E | Enlist E3 | 0.1 | -- | 24 | 33.2 | 15.9 | 57.0 | -- | 36.2 |
| MS Tech. | XO 0311E | Enlist E3 | 0.3 | -- | 23 | 31.7 | 16.2 | 57.7 | -- | 32.1 |
| NDSU | ND17009GT | GT | 00.9 | 3.8 | 27 | 33.6 | 16.7 | 60.4 | 36.9 | 31.3 |
| NDSU | ND21008GT20 | GT | 00.8 | 1.2 | 26 | 32.5 | 16.5 | 59.3 | -- | 29.2 |
| Proseed | EL80-093N | Enlist E3 | 00.9 | 2.5 | 25 | 31.3 | 16.7 | 58.8 | -- | 29.9 |
| Proseed | XT20-07 | Xtend | 00.7 | 3.1 | 28 | 30.6 | 17.0 | 58.8 | 38.6 | 32.2 |
| Proseed | XT70-09N | Xtend | 00.9 | 2.5 | 28 | 30.7 | 17.4 | 58.3 | 39.3 | 32.4 |
| REA | R0112XF | RR2XF | 0.1 | 2.4 | 31 | 33.8 | 16.2 | 55.7 | -- | 41.5 |
| REA | RX00912 | RR2X | 00.9 | 3.1 | 30 | 31.5 | 16.7 | 57.9 | -- | 43.7 |
| Stine | 002EE06 | Enlist E3 | 00.6 | -- | 25 | 31.9 | 16.1 | 58.7 | -- | 26.7 |
| Stine | 003EB62 | Enlist E3 | 00.7 | -- | 29 | 30.6 | 16.9 | 58.7 | -- | 33.0 |
| Stine | 01EA63 | Enlist E3 | 00.9 | -- | 23 | 31.5 | 16.6 | 58.0 | -- | 30.7 |
| Stine | 01EE03 | Enlist E3 | 00.9 | -- | 25 | 32.5 | 16.3 | 55.6 | -- | 41.9 |
| Syng NK | NK009-T1XF | RR2XF | 00.9 | 2.8 | 26 | 32.6 | 16.4 | 58.0 | -- | 38.5 |
| Syng NK | S006-R7X | Xtend | 00.6 | 3.0 | 27 | 31.5 | 17.3 | 58.6 | 50.3 | 28.8 |
| Syng NK | S008-E3 | Enlist E3 | 00.8 | 1.5 | 26 | 31.2 | 16.6 | 58.4 | -- | 34.2 |
| Zinesto | Z0100E | Enlist E3 | 0.1 | -- | 21 | 31.5 | 16.3 | 57.5 | -- | 28.6 |
| Zinesto | Z0102E | Enlist E3 | 0.1 | -- | 25 | 32.5 | 16.2 | 55.7 | -- | 41.9 |
| Mean | | | | 2.6 | 26 | 31.9 | 16.6 | 57.8 | 40.4 | 34.7 |
| CV % | | | | 19.1 | 6.8 | 3.3 | 3.0 | 1.1 | 5.5 | 8.8 |
| LSD 0.05 | | | | 0.7 | 3.0 | 1.7 | 0.8 | 1.1 | 3.0 | 4.9 |
| LSD 0.10 | | | | 0.6 | 2.0 | 1.4 | 0.7 | 0.9 | 2.5 | 4.1 |

Planted: May 18. Harvested: Sept. 23. Previous crop: canola.

¹Herbicide trait: GT= Glyphosate Tolerant, RR = Roundup Ready, and X = Extend.²Iron deficiency chlorosis rating: 1-green, 3-yellow, 5-dead tissue.³The 2021 trial sustained moderate drought.

Table 32. 2021 Soybean - Enlist, GT, RR and Xtend - Rugby (North Central REC) - Authors, E. Eriksmoen, A. Kraklau and J. Hansen.

| Company/ Brand | Variety | Herbicide Trait ¹ | Maturity Group | IDC Rating ² | Plant Height | Seed Protein | Seed Oil | Test Weight | Seed Yield | |
|-------------------|--------------|---------------------------------|-------------------|----------------------------|-----------------|-----------------|-------------|----------------|--------------------|-------------------|
| | | | | | | | | | 2020 | 2021 ³ |
| | | | | (1-5) | (inch) | (%) | (%) | (lb/bu) | ----- (bu/a) ----- | |
| Golden H. | GH00833E3 | Enlist E3 | 00.8 | 1.8 | 17 | 32.4 | 17.1 | 53.1 | -- | 14.0 |
| Golden H. | GH00982XF | RR2XF | 00.9 | 3.1 | 15 | 33.3 | 17.3 | 53.0 | -- | 16.1 |
| Golden H. | GH0272XF | RR2XF | 0.2 | 2.6 | 16 | 31.6 | 18.1 | 52.0 | -- | 18.5 |
| Integra | 40201N | Enlist E3 | 0.2 | 3.3 | 17 | 33.9 | 17.0 | 50.6 | 38.9 | 18.6 |
| Integra | 50081N | Xtend | 00.8 | 2.6 | 16 | 33.7 | 17.0 | 53.2 | -- | 13.1 |
| Integra | 50309N | Xtend | 0.3 | 1.4 | 15 | 32.5 | 16.4 | 52.7 | 34.3 | 23.2 |
| Legacy | LS-0239 RR2X | RR2X | 0.2 | 1.1 | 17 | 32.4 | 16.5 | 52.4 | 35.1 | 22.8 |
| Legacy | LS-0320N E | Enlist E3 | 0.3 | 2.7 | 17 | 33.0 | 16.7 | 52.8 | 36.8 | 15.6 |
| Legacy | LS042-21E | Enlist E3 | 0.4 | 2.1 | 17 | 33.1 | 16.8 | 49.7 | -- | 22.9 |
| Legacy | LS-0429 E | Enlist E3 | 0.4 | 1.8 | 19 | 35.1 | 16.6 | 50.8 | 30.9 | 21.8 |
| Legacy | LS044-21 XF | RR2XF | 0.4 | 1.6 | 22 | 34.1 | 16.5 | 48.2 | -- | 23.9 |
| LG Seeds | LGS00838XF | RR2XF | 00.8 | 3.2 | 16 | 32.8 | 17.4 | 53.1 | -- | 12.3 |
| LG Seeds | LGS0111RX | Xtend | 0.1 | 2.7 | 19 | 33.6 | 17.0 | 52.7 | 36.2 | 20.8 |
| LG Seeds | LGS0400RX | Xtend | 0.4 | 2.3 | 17 | 34.5 | 16.2 | 49.0 | 37.3 | 21.2 |
| MS Tech. | XO 0101E | Enlist E3 | 0.1 | -- | 18 | 33.3 | 16.6 | 52.4 | -- | 19.0 |
| MS Tech. | XO 0311E | Enlist E3 | 0.3 | -- | 16 | 33.2 | 16.6 | 52.9 | -- | 19.1 |
| NDSU | ND17009GT | GT | 00.9 | 3.8 | 14 | 35.8 | 16.7 | 52.6 | 29.8 | 11.6 |
| NDSU | ND21008GT20 | GT | 00.8 | 1.2 | 14 | 34.1 | 16.8 | 53.8 | -- | 11.1 |
| Proseed | XT60-40N | RR2X | 0.4 | 3.0 | 15 | 34.8 | 16.6 | 49.7 | -- | 15.1 |
| Proseed | XT70-09N | RR2X | 00.9 | 2.5 | 15 | 32.8 | 17.1 | 53.1 | 35.9 | 12.9 |
| Proseed | XT80-20N | RR2X | 0.2 | 1.1 | 17 | 32.0 | 16.7 | 52.4 | -- | 21.7 |
| REA | R0112XF | RR2XF | 0.1 | 2.4 | 20 | 33.1 | 17.5 | 52.7 | -- | 17.4 |
| REA | RX00912 | RR2X | 00.9 | 3.1 | 17 | 32.9 | 17.2 | 53.1 | -- | 12.0 |
| Stine | 002EE06 | Enlist E3 | 00.6 | -- | 14 | 32.8 | 16.8 | 53.0 | -- | 8.7 |
| Stine | 003EB62 | Enlist E3 | 00.7 | -- | 15 | 33.1 | 17.1 | 54.0 | -- | 12.3 |
| Stine | 01EA63 | Enlist E3 | 00.9 | -- | 15 | 34.1 | 16.3 | 52.0 | -- | 12.6 |
| Stine | 01EE03 | Enlist E3 | 00.9 | -- | 17 | 33.4 | 17.1 | 50.4 | -- | 18.2 |
| Syng NK | NK009-T1XF | RR2XF | 00.9 | 2.8 | 14 | 32.5 | 17.6 | 53.1 | -- | 15.7 |
| Syng NK | NK02-M4XF | RR2XF | 0.2 | 3.1 | 16 | 32.0 | 17.6 | 52.3 | -- | 17.3 |
| Syng NK | S006-R7X | Xtend | 00.6 | 3.0 | 15 | 32.9 | 17.0 | 53.5 | 39.2 | 12.4 |
| Syng NK | S008-E3 | Enlist E3 | 00.8 | 1.5 | 15 | 32.0 | 17.1 | 53.4 | -- | 15.0 |
| Syng NK | S02-F9X | Xtend | 0.2 | 3.2 | 15 | 34.2 | 16.3 | 51.3 | 36.8 | 14.9 |
| Thunder | SB8001 | Xtend | 0.1 | 2.7 | 18 | 33.8 | 17.1 | 52.1 | 36.5 | 18.7 |
| Thunder | SB81006 | Xtend | 00.6 | 2.7 | 18 | 31.0 | 17.6 | 53.3 | 37.5 | 15.1 |
| Thunder | SB88007N | Xtend | 00.7 | 2.2 | 17 | 32.6 | 17.4 | 52.9 | -- | 16.0 |
| Thunder | TX82008N | RR2XF | 00.8 | 3.7 | 17 | 32.0 | 17.5 | 53.3 | -- | 19.1 |
| Mean | | | | 2.6 | 16 | 33.2 | 17.0 | 52.2 | 35.8 | 16.7 |
| CV % | | | | 19.1 | 10.8 | 2.3 | 1.9 | 2.3 | 7.8 | 22.9 |
| LSD 0.05 | | | | 0.7 | 3.0 | 1.2 | 0.5 | 1.9 | 3.9 | 6.1 |
| LSD 0.10 | | | | 0.6 | 2.0 | 1.0 | 0.4 | 1.6 | 3.3 | 5.1 |

Planted: May 19. Harvested: Sept. 23. Previous crop: soybean.

¹Herbicide trait: GT= Glyphosate Tolerant, RR = Roundup Ready, and X = Extend.²Iron deficiency chlorosis rating: 1-green, 3-yellow, 5-dead tissue.³The 2021 trial sustained extreme drought. Data from this trial should be viewed with caution.

Table 33. 2021 Soybean - GT, RR and Xtend - Hettinger (REC) - Authors, J. Rickertsen and M. Wells.

| Company/ Brand | Variety | Maturity | | Plant Height (inch) | Test Weight (lb/bu) | Seed Oil (%) | Seed Protein (%) | Seed Yield | |
|-------------------|------------|----------|---------------------------------|---------------------------|---------------------------|--------------------|------------------------|------------|------------|
| | | Group | Maturity ¹ (date) | | | | | 2021 | 2-yr. Avg. |
| Integra | 40300N | 0.3 | 9/13 | 21 | 55.6 | 17.5 | 30.9 | 21.3 | 24.2 |
| Integra | 50309N | 0.3 | 9/13 | 22 | 56.4 | 17.1 | 30.7 | 21.9 | 23.6 |
| Integra | 70212XF | 0.2 | 9/10 | 24 | 56.8 | 18.4 | 30.0 | 21.8 | -- |
| Integra | 70622XF | 0.6 | 9/15 | 19 | 56.6 | 16.6 | 32.0 | 22.9 | -- |
| NDSU | ND17009GT | 00.9 | 9/9 | 24 | 58.1 | 17.9 | 32.9 | 21.1 | 22.3 |
| NDSU | ND2108GT73 | 0.8 | 9/17 | 19 | 57.1 | 17.9 | 30.6 | 23.6 | 22.8 |
| Proseed | EL20-73N | 0.7 | 9/17 | 20 | 56.5 | 17.0 | 31.2 | 23.3 | -- |
| Proseed | EL90-33N | 0.3 | 9/14 | 20 | 55.8 | 17.5 | 30.7 | 22.2 | -- |
| Proseed | XT20-70 | 0.7 | 9/16 | 23 | 56.8 | 16.7 | 31.8 | 23.8 | -- |
| Proseed | XT60-40N | 0.4 | 9/13 | 21 | 56.4 | 18.1 | 31.1 | 22.3 | 22.1 |
| Proseed | XT80-20N | 0.2 | 9/13 | 22 | 56.8 | 17.0 | 30.7 | 23.8 | 23.0 |
| Proseed | XT90-50 | 0.5 | 9/15 | 19 | 56.7 | 17.9 | 31.4 | 24.0 | -- |
| Mean | | | 9/14 | 21 | 56.6 | 17.5 | 31.2 | 22.7 | 23.1 |
| CV % | | | 1.1 | 7.5 | 0.7 | 1.7 | 1.7 | 9.1 | -- |
| LSD 0.05 | | | 1.6 | 2.3 | 0.5 | 0.4 | 0.6 | 2.5 | -- |
| LSD 0.10 | | | 1.3 | 1.9 | 0.4 | 0.3 | 0.5 | 1.9 | -- |

Planted: June 1. Harvested: Sept. 24. Previous crop: spring wheat.

¹Maturity is date of 95% brown or tan pods.**Table 34. 2021 Soybean - GT, RR and Xtend - Mandan (Hettinger REC) - Authors, J. Rickertsen and M. Wells.**

| Company/ Brand | Variety | Maturity | | Plant Height (inch) | Test Weight (lb/bu) | Seed Oil (%) | Seed Protein (%) | Seed Yield | |
|-------------------|------------|----------|---------------------------------|---------------------------|---------------------------|--------------------|------------------------|------------|------------|
| | | Group | Maturity ¹ (date) | | | | | 2021 | 2-yr. Avg. |
| Integra | 40300N | 0.3 | 9/13 | 21 | 53.7 | 17.3 | 31.2 | 30.4 | 35.4 |
| Integra | 50309N | 0.3 | 9/13 | 21 | 56.3 | 16.0 | 32.0 | 30.7 | 34.1 |
| Integra | 70212XF | 0.2 | 9/10 | 23 | 55.5 | 17.1 | 32.3 | 28.1 | -- |
| Integra | 70622XF | 0.6 | 9/15 | 16 | 55.9 | 15.9 | 33.0 | 25.9 | -- |
| NDSU | ND17009GT | 00.9 | 9/9 | 23 | 56.2 | 17.6 | 34.2 | 27.8 | 33.2 |
| NDSU | ND2108GT73 | 0.8 | 9/17 | 19 | 56.2 | 17.2 | 31.6 | 31.8 | 34.9 |
| Proseed | EL20-73N | 0.7 | 9/17 | 17 | 56.0 | 16.2 | 32.4 | 29.3 | -- |
| Proseed | EL90-33N | 0.3 | 9/14 | 19 | 54.4 | 17.1 | 31.9 | 27.8 | -- |
| Proseed | XT20-70 | 0.7 | 9/16 | 16 | 53.6 | 16.1 | 33.3 | 24.8 | -- |
| Proseed | XT60-40N | 0.4 | 9/13 | 18 | 54.3 | 16.8 | 33.1 | 25.5 | 28.8 |
| Proseed | XT80-20N | 0.2 | 9/13 | 21 | 55.8 | 16.3 | 31.8 | 29.3 | 32.2 |
| Proseed | XT90-50 | 0.5 | 9/15 | 16 | 54.2 | 16.7 | 32.6 | 27.9 | -- |
| Mean | | | 9/14 | 19 | 55.2 | 16.7 | 32.4 | 28.3 | 33.1 |
| CV % | | | 1.1 | 7.0 | 2.0 | 1.6 | 1.7 | 7.1 | -- |
| LSD 0.05 | | | 1.6 | 1.6 | 1.3 | 0.3 | 0.7 | 2.4 | -- |
| LSD 0.10 | | | 1.3 | 1.3 | 1.0 | 0.2 | 0.5 | 1.9 | -- |

Planted: June 2. Harvested: Sept. 30. Previous crop: spring wheat.

Table 35. 2021 Soybean - Dryland, GT, RR and Xtend - Williston - Authors, J. Bergman, G. Pradhan, and C. Wahlstrom.

| Company/ | | Maturity | Plant | Test | Seed | Seed | Seed Yield | | |
|----------|-------------|----------|--------|---------|------|---------|-------------------|------------|------------|
| Brand | Variety | Group | Height | Weight | Oil | Protein | 2021 | 2-yr. Avg. | 3-yr. Avg. |
| | | | (inch) | (lb/bu) | (%) | (%) | ------(bu/a)----- | | |
| Dyna-Gro | S009XT68 | 00.9 | 15 | 55.7 | 20.0 | 39.6 | 12.8 | 11.1 | 20.7 |
| Dyna-Gro | S03XT29 | 0.3 | 15 | 55.7 | 19.7 | 40.1 | 13.1 | 11.2 | 21.9 |
| LG Seeds | LGS00838XF | 00.8 | 15 | 55.7 | 20.8 | 40.1 | 13.4 | -- | -- |
| LG Seeds | LGS0111RX | 0.1 | 17 | 56.4 | 21.3 | 40.3 | 14.7 | 13.1 | 22.8 |
| NDSU | ND17009GT | 00.9 | 19 | 58.7 | 20.8 | 41.3 | 15.4 | 12.3 | 21.0 |
| NDSU | ND18008GT | 00.8 | 20 | 58.4 | 20.5 | 41.4 | 15.0 | 11.4 | 20.0 |
| NDSU | ND21008GT20 | 00.8 | 15 | 57.5 | 21.3 | 38.5 | 13.1 | 11.5 | 20.9 |
| NDSU | ND2108GT73 | 0.8 | 14 | 57.1 | 20.7 | 38.5 | 13.5 | 10.4 | -- |
| REA | RX00912 | 00.9 | 15 | 56.1 | 21.4 | 38.1 | 12.0 | -- | -- |
| REA | RX0112XF | 0.1 | 18 | 55.8 | 21.0 | 38.4 | 17.5 | -- | -- |
| REA | RX0411 | 0.4 | 16 | 56.4 | 19.5 | 39.4 | 16.1 | 11.6 | -- |
| Mean | | | 16 | 56.7 | 20.6 | 39.6 | 14.2 | 11.6 | 21.2 |
| CV % | | | 12 | 1.1 | 1.8 | 2.1 | 14.9 | -- | -- |
| LSD 0.05 | | | 3 | 0.9 | 0.5 | 1.2 | 3.0 | -- | -- |
| LSD 0.10 | | | 2 | 0.7 | 0.4 | 1.0 | 2.5 | -- | -- |

Planted: May 27. Harvested: Sept. 30. Previous crop: wheat.

Table 36. 2021 Soybean - Irrigated, Conventional - Nesson Valley (Williston REC) - Authors, J. Jacobs and T. Tjelde.

| Company/ | | Maturity | Plant | Test | Seed | Seed | Seed Yield | | |
|----------|-------------|----------|--------|---------|------|---------|-------------------|-------------------------|-------------------------|
| Brand | Variety | Group | Height | Weight | Oil | Protein | 2021 | 2-yr. Avg. ¹ | 3-yr. Avg. ² |
| | | | (inch) | (lb/bu) | (%) | (%) | ------(bu/a)----- | | |
| NDSU | ND Benson | 0.4 | 28 | 57.4 | 18.7 | 36.2 | 54.6 | 51.9 | 58.7 |
| NDSU | ND Dickey | 0.7 | 26 | 57.3 | 17.5 | 34.5 | 56.5 | -- | -- |
| NDSU | ND Rolette | 00.9 | 25 | 57.4 | 19.5 | 34.7 | 52.2 | 48.5 | - |
| NDSU | ND Stutsman | 0.7 | 28 | 57.9 | 18.7 | 32.3 | 64.4 | 56.1 | 64.6 |
| Prograin | Hana | 00.9 | 25 | 57.3 | 18.6 | 37.1 | 39.3 | -- | -- |
| Prograin | Liska | 00.3 | 25 | 56.8 | 17.7 | 38.2 | 45.8 | -- | -- |
| Prograin | Maya | 00.6 | 27 | 58.6 | 16.7 | 38.6 | 46.5 | -- | -- |
| Mean | | | 26 | 57.5 | 18.2 | 35.9 | 51.3 | 52.2 | 61.7 |
| CV % | | | -- | 0.6 | 1.2 | 1.2 | 8.0 | -- | -- |
| LSD 0.05 | | | -- | 0.5 | 0.3 | 0.6 | 6.1 | -- | -- |
| LSD 0.10 | | | -- | 0.4 | 0.3 | 0.5 | 5.1 | -- | -- |

Planted: May 19. Harvested: Oct. 7. Previous crop: barley.

¹2-yr. Avg. is 2019 and 2021 . ²3-yr. Avg. is 2018, 2019, and 2021.

Table 37. 2021 Soybean - Irrigated, GT, RR and Xtend - Nesson Valley (Williston REC) - Authors, J. Jacobs, T. Tjelde and A. Turnquist.

| Company/ Brand | Variety | Maturity Group | Plant Height (inch) | Test Weight (lb/bu) | Seed Oil (%) | Seed Protein (%) | Seed Yield | | |
|-------------------|-------------|-------------------|---------------------------|---------------------------|--------------------|------------------------|-------------------|------------|------------|
| | | | | | | | 2021 | 2-yr. Avg. | 3-yr. Avg. |
| | | | | | | | ------(bu/a)----- | | |
| Integra | 40300N | 0.3 | 28 | 56.5 | 18.8 | 32.1 | 60.0 | -- | -- |
| Integra | 50309N | 0.3 | 27 | 56.2 | 18.5 | 33.4 | 52.7 | 47.4 | -- |
| Integra | 70212XF | 0.2 | 31 | 57.7 | 19.1 | 33.5 | 57.0 | -- | -- |
| NDSU | ND17009GT | 00.9 | 25 | 58.7 | 19.5 | 36.0 | 48.5 | 39.1 | 35.8 |
| NDSU | ND21008GT20 | 00.8 | 21 | 58.0 | 18.9 | 33.7 | 50.5 | -- | -- |
| NDSU | ND2108GT73 | 0.8 | 28 | 58.5 | 18.6 | 33.8 | 63.0 | -- | -- |
| REA | R0112XF | 0.1 | 30 | 57.3 | 19.0 | 33.9 | 54.9 | -- | -- |
| REA | RX00912 | 00.9 | 26 | 56.9 | 19.4 | 31.6 | 50.0 | -- | -- |
| REA | RX0411 | 0.4 | 31 | 57.5 | 19.0 | 31.7 | 56.9 | 46.6 | - |
| Mean | | | 27 | 57.5 | 19.0 | 33.3 | 54.8 | 44.4 | 35.8 |
| CV % | | | -- | 1.0 | 1.2 | 1.1 | 7.6 | -- | -- |
| LSD 0.05 | | | -- | 0.8 | 0.3 | 0.5 | 6.1 | -- | -- |
| LSD 0.10 | | | -- | 0.7 | 0.3 | 0.4 | 5.0 | -- | -- |

Planted: May 19. Harvested: Oct. 7. Previous crop: barley.

Table 38. 2021 Soybean - Irrigated, GT, RR and Xtend - Trenton (Williston REC) - Authors, J. Jacobs, T. Tjelde and A. Turnquist.

| Company/ Brand | Variety | Maturity Group | Test Weight (lb/bu) | Seed Oil (%) | Seed Protein (%) | Seed Yield |
|-------------------|-------------|-------------------|---------------------------|--------------------|------------------------|----------------|
| | | | | | | 2021 (bu/a) |
| Integra | 40300N | 0.3 | 56.0 | 18.0 | 34.4 | 57.7 |
| Integra | 50309N | 0.3 | 57.0 | 17.4 | 34.2 | 62.0 |
| Integra | 70212XF | 0.2 | 56.9 | 18.1 | 35.0 | 53.8 |
| NDSU | ND17009GT | 00.9 | 57.8 | 18.4 | 37.5 | 48.2 |
| NDSU | ND21008GT20 | 0.8 | 57.2 | 18.3 | 34.4 | 50.5 |
| NDSU | ND2108GT73 | 00.8 | 57.0 | 17.7 | 33.9 | 55.7 |
| REA | R0112XF | 0.1 | 56.9 | 18.0 | 35.0 | 56.5 |
| REA | RX00912 | 00.9 | 57.0 | 18.6 | 33.1 | 49.3 |
| REA | RX0411 | 0.4 | 56.8 | 18.0 | 32.9 | 52.3 |
| Mean | | | 56.9 | 18.0 | 34.5 | 54.0 |
| CV % | | | 0.9 | 1.5 | 1.6 | 11.2 |
| LSD 0.05 | | | 0.8 | 0.4 | 0.8 | 8.8 |
| LSD 0.10 | | | 0.6 | 0.3 | 0.7 | 7.3 |

Planted: May 19. Harvested: Oct. 6. Previous crop: sugarbeet.

Table 39. 2021 Soybean - Enlist, RR and Xtend - Ransom and Sargent Counties - Authors, B. Zimprich, M. Seykora, H. Kandel and C. Deplazes.

| Company/ Brand | Variety | Mt. Group | Ransom | | | | Sargent | | | | Combined 2021 | | | |
|-------------------|------------|--------------|----------------|-----------------|-------------|---------------|----------------|-----------------|-------------|---------------|----------------|-----------------|-------------|---------------|
| | | | Test Weight | Seed Protein | Seed Oil | Seed Yield | Test Weight | Seed Protein | Seed Oil | Seed Yield | Test Weight | Seed Protein | Seed Oil | Seed Yield |
| | | | (lb/bu) | (%) | (%) | (bu/a) | (lb/bu) | (%) | (%) | (bu/a) | (lb/bu) | (%) | (%) | (bu/a) |
| AgriGold | G0801E3 | 0.8 | 57.3 | 32.1 | 19.2 | 42.2 | 56.8 | 34.6 | 18.6 | 21.5 | 57.1 | 33.3 | 18.9 | 33.9 |
| AgriGold | G1490XF | 1.4 | 56.9 | 32.6 | 18.7 | 58.4 | 57.1 | 34.1 | 18.9 | 31.7 | 57.0 | 33.2 | 18.8 | 47.7 |
| Golden H. | GH0502XF | 0.5 | 58.1 | 32.8 | 18.8 | 44.5 | 58.0 | 35.0 | 18.1 | 20.6 | 58.0 | 33.8 | 18.5 | 34.9 |
| Golden H. | GH0543X | 0.5 | 56.7 | 31.3 | 19.7 | 45.7 | 57.2 | 33.7 | 18.8 | 19.0 | 56.9 | 32.3 | 19.4 | 35.0 |
| Golden H. | GH1032XF | 1.0 | 58.4 | 33.0 | 18.4 | 46.6 | 57.5 | 35.0 | 17.7 | 21.3 | 58.0 | 33.8 | 18.0 | 36.4 |
| Golden H. | GH1442XF | 1.4 | 57.2 | 33.3 | 18.7 | 56.2 | 58.3 | 34.0 | 18.5 | 35.6 | 57.6 | 33.6 | 18.7 | 48.0 |
| Hefty | Z0801E | 0.8 | 57.5 | 32.2 | 19.5 | 51.2 | 55.6 | 34.6 | 18.9 | 23.9 | 56.7 | 33.1 | 19.3 | 40.3 |
| Hefty | Z1001E | 1.0 | 58.5 | 34.0 | 18.2 | 50.4 | 58.6 | 34.8 | 18.0 | 28.4 | 58.6 | 34.4 | 18.1 | 41.6 |
| Hefty | Z1101E | 1.1 | 57.7 | 31.8 | 19.6 | 56.2 | 58.5 | 32.5 | 19.3 | 26.9 | 58.1 | 32.2 | 19.4 | 44.5 |
| Legacy | LS082-20E | 0.8 | 57.6 | 32.8 | 19.3 | 53.1 | 58.0 | 34.8 | 19.0 | 29.5 | 57.7 | 33.7 | 19.1 | 43.7 |
| Legacy | LS094-20XF | 0.9 | 57.5 | 32.4 | 19.2 | 47.2 | 56.7 | 35.0 | 18.6 | 22.8 | 57.1 | 33.4 | 18.9 | 37.4 |
| Legacy | LS102-20E | 1.0 | 58.3 | 34.3 | 18.2 | 42.8 | 58.3 | 34.9 | 18.1 | 26.5 | 58.3 | 34.5 | 18.2 | 36.3 |
| Legacy | LS122-21E | 1.2 | 57.4 | 31.1 | 20.0 | 50.2 | 57.6 | 33.1 | 18.8 | 20.9 | 57.5 | 31.9 | 19.5 | 38.5 |
| Legacy | LS1320NE | 1.3 | 57.0 | 34.0 | 18.2 | 48.5 | 57.8 | 34.7 | 18.2 | 32.1 | 57.3 | 34.4 | 18.2 | 41.9 |
| REA | R0632XF | 0.6 | 57.5 | 33.2 | 18.4 | 34.5 | 56.6 | 34.2 | 18.5 | 25.5 | 57.1 | 33.6 | 18.4 | 30.9 |
| REA | R1042XF | 1.0 | 57.5 | 32.6 | 19.0 | 43.7 | 58.3 | 35.0 | 18.5 | 24.9 | 57.8 | 33.6 | 18.9 | 36.2 |
| REA | R1350XF | 1.3 | 57.6 | 32.0 | 19.3 | 48.4 | 57.2 | 34.5 | 18.9 | 25.4 | 57.4 | 33.1 | 19.2 | 39.2 |
| REA | RX0721 | 0.7 | 57.2 | 32.3 | 19.0 | 48.4 | 57.5 | 34.6 | 18.6 | 22.1 | 57.3 | 33.3 | 18.8 | 37.9 |
| Mean | | | 57.5 | 32.7 | 19.0 | 48.2 | 57.5 | 34.4 | 18.6 | 25.5 | 57.5 | 33.4 | 18.8 | 39.1 |
| C.V. % | | | 0.6 | 2.6 | 1.9 | 10.8 | 1.6 | 1.2 | 1.5 | 9.1 | 1.2 | 2.3 | 1.9 | 12.3 |
| LSD 0.05 | | | 0.6 | 1.4 | 0.6 | 8.5 | NS | 0.7 | 0.5 | 4.8 | 0.8 | 0.9 | 0.4 | 6.0 |
| LSD 0.10 | | | 0.5 | 1.1 | 0.5 | 7.1 | NS | 0.6 | 0.4 | 4.0 | 0.7 | 0.8 | 0.4 | 5.0 |

Planted: May 7. Harvested: Sept. 28. Previous crop: corn.

NDSU does not endorse commercial products or companies even though reference may be made to tradenames, trademarks or service names.

For more information on this and other topics, see www.ag.ndsu.edu

NDSU encourages you to use and share this content, but please do so under the conditions of our Creative Commons license. You may copy, distribute, transmit and adapt this work as long as you give full attribution, don't use the work for commercial purposes and share your resulting work similarly. For more information, visit www.ag.ndsu.edu/agcomm/creative-commons.

County commissions, North Dakota State University and U.S. Department of Agriculture cooperating. NDSU does not discriminate in its programs and activities on the basis of age, color, gender expression/identity, genetic information, marital status, national origin, participation in lawful off-campus activity, physical or mental disability, pregnancy, public assistance status, race, religion, sex, sexual orientation, spousal relationship to current employee, or veteran status, as applicable. Direct inquiries to Vice Provost for Title IX/ADA Coordinator, Old Main 201, NDSU Main Campus, 701-231-7708, ndsu.eoaa.ndsu.edu. This publication will be made available in alternative formats for people with disabilities upon request, 701-231-7881.