



H1898 (Reviewed December 2023)

# Pollination in Vegetable Gardens and Backyard Fruits

Esther McGinnis, North Dakota State University Extension Horticulturist  
 Nathaniel Walton, Michigan State University Extension Educator  
 Erwin Elsner, Michigan State University Extension Educator  
 Janet Knodel, North Dakota State University Extension Entomologist

**B**ees are important insect pollinators for bountiful home vegetable gardens and backyard fruits. European honey bees and native bees, such as bumble bees, help ensure fruit set and higher yields. Learning about the process of pollination can help smart gardeners attract and safeguard these important insects.

## What is Pollination?

Pollination is the deposit of pollen grains from the anther (male structure) onto the pistil (female structure) of the same plant species (Figure 1). Pollen can be transferred within an individual flower or between separate flowers. Successful pollination results in the production of viable seeds and a fruit.

Most crop plants are pollinated by insects or wind. Many agronomic crops, such as wheat and corn, rely on wind pollination. In contrast, many fruits and vegetables require or benefit from insect pollination. Common insect pollinators include bees, butterflies and flies. Of these pollinators, bees are the most important in the home garden.

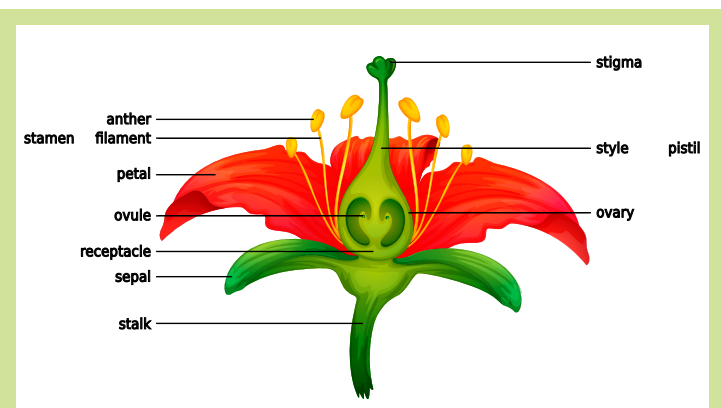


Figure 1. Anatomy in a perfect flower. (iStock.com)

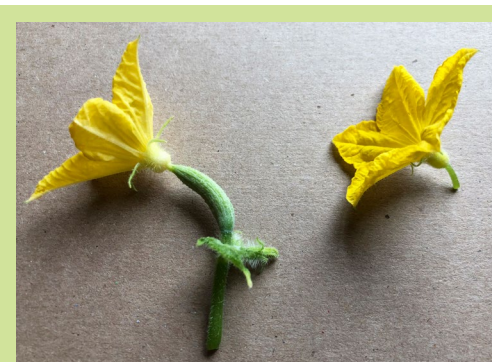


Figure 2. Imperfect flowers. Cucumber female flower with its ovary (left) and male flower (right).  
 (E. McGinnis, NDSU)

## Role of Pollinators in the Vegetable Garden

Common plants in the cucurbit family include garden favorites such as cucumbers, squash, zucchini, pumpkins, watermelon and muskmelon. Most cucurbits depend on bee pollination because each plant produces separate male and female flowers rather than having both sets of reproductive parts in each flower.

Such flowers are called “imperfect.” Bees are essential to cross-pollinate, or carry pollen from the male flower to the receptive female flower.

The cucurbit male flower contains three to five stamens with pollen-producing anthers. The female flower produces a single style with three stigmas. The easiest way to distinguish between the two flower sexes is to look for an ovary below the yellow petals. Female flowers have a swollen ovary, or fruit, and male flowers do not (Figure 2).

Gardeners frequently ask why they have so many flowers on their cucumbers but no fruit set. Look closely at the flowers to answer this question. In many cucumber cultivars, the first set of flowers are all male, which do not bear fruit. Male and female flowers then will be produced in the second wave of blooms.

If female flowers are present but no fruit develops, then the problem may be a lack of pollinators. In the short term, you can fill the role of the bee with hand-pollination.

Take a clean paintbrush and insert it into the male flower to gather pollen. Then transfer pollen to the stigmas of an open female flower. Hand-pollination works best in the morning. For a long-term solution, create pollinator habitat near or in the garden to attract bees.

In contrast to cucurbits, Solanaceae crops such as tomatoes, peppers and eggplants produce “perfect” flowers that contain male and female reproductive structures. Flower anatomy differs from the idealized image in Figure 1.

Tomato anthers form a tube that completely surrounds the pistil (Figure 3a). In Figure 3b, the anthers are partially removed to reveal the pistil.

NDSU | EXTENSION

MICHIGAN STATE UNIVERSITY | Extension

Tomatoes, peppers and eggplants can be pollinated simply by wind shaking the pollen from the anthers onto the stigma. However, bumble bees can improve fruit set and size because they vibrate the flowers and shake pollen loose from the anthers.

Leafy greens (lettuce, spinach, arugula), cole crops (cabbage, broccoli, cauliflower, kale), root crops (carrots, beets, radishes, onions), legumes (peas, beans) and tuber crops (potatoes) do not require bees to produce an edible harvest.

## Role of Pollinators in Growing Fruit

Bee pollination is particularly important for growing tree fruits and small fruits. Many tree fruits such as apples and pears are self-incompatible (Table 1). This means two separate cultivars must be planted to produce fruit.

For example, a 'Honeycrisp' apple blossom will not set fruit if a bee deposits pollen from a second 'Honeycrisp' apple tree. Instead, the pollen must come from a cultivar that is genetically different and has an overlapping bloom time.

Fruits such as sour cherries are self-compatible and can set fruit in the absence of a second cultivar (Table 2). However, self-compatibility still requires bees to transfer pollen within the flower or between flowers for full pollination. The number of cherries on a tree is directly related to the number of bee visits.

Raspberries are another example of a self-compatible fruit that relies on bees for full pollination (Table 2). The average raspberry flower contains 100 to 125 pistils. To produce a normal berry that does not crumble, at least 75 to 85 of the pistils must be pollinated.

## Best Management Practices to Attract and Protect Pollinators

- Plant native and other well-adapted flowering plants for seasonlong bloom in or near the garden.
- Create nesting habitat for ground- and cavity-nesting bees.
- Do not spray insecticides or fungicides on flowering plants or fruit trees just before or during bloom.
- If pesticide applications are necessary, choose a product with the least toxicity to bees.

This publication is supported in part by the Crop Protection and Pest Management Program [grant no. 2017-70006-27144/accession 1013592] from the U.S. Department of Agriculture (USDA) National Institute of Food and Agriculture. Any opinions, findings, conclusions or recommendations expressed are those of the authors and do not necessarily reflect the view of the USDA.



United States  
Department of  
Agriculture

National Institute  
of Food  
and Agriculture



**Figure 3a. Tomato flower with its anthers forming a tube around the pistil.**

(E. McGinnis, NDSU)



**Figure 3b. Tomato flower with a portion of its anthers cut away to reveal the pistil.**

(E. McGinnis, NDSU)

**Table 1. Tree fruits that require bee pollination for optimal fruit set.**

Fruit	Self-compatible (SC) or Self-incompatible (SI)	Comments
Apples	SI	Crabapples may be a pollen source
Apricots*	Varies by cultivar	Self-compatible cultivars may benefit from cross-pollination
Pears	SI	
Plums	Most are SI, but some exceptions exist	

\*Not reliably hardy in North Dakota

**Table 2. Small fruits that require or benefit from bee pollination.**

Fruit	Self-compatible (SC) or Self-incompatible (SI)	Comments
Blackberries	SC	Not reliably hardy in North Dakota
Blueberries	Varies by cultivar	Does not grow well in N.D. soils
Cherries (sour)	SC	
Currants	Generally SC but some variation	
Elderberries	SC	A second cultivar improves yields
Honeyberries	SI	Haskaps are closely related
Raspberries	SC	Bee pollination prevents misshapen berries
Saskatoon berries	SC	Also known as Juneberries; a second cultivar improves yields
Strawberries	SC	Bee pollination prevents misshapen berries

## Literature Consulted

Kalb, T., and K. Wiederholt. 2017. Starting a Community Orchard in North Dakota. NDSU Extension publication H1558. [www.ag.ndsu.edu/publications/lawns-gardens-trees/starting-a-community-orchard-in-north-dakota](http://www.ag.ndsu.edu/publications/lawns-gardens-trees/starting-a-community-orchard-in-north-dakota)

Klein, A.M., B.E. Vaissiere, J.H. Cane, I. Steffan-Dewenter, S.A. Cunningham, K. Kremen and T. Tscharntke. 2007. Importance of pollinators in changing landscapes for world crops. *Proceedings of the Royal Society B* 274: 303-313.

## Resources

McGinnis, E., J. Knodel and T. Weinmann. 2016. Bee-utiful Landscapes: Building a Pollinator Garden. NDSU Extension publication No. H1811. [www.ndsu.edu/agriculture/extension/publications/bee-utiful-landscapes-building-pollinator-garden-0](http://www.ndsu.edu/agriculture/extension/publications/bee-utiful-landscapes-building-pollinator-garden-0)

Gibbs, J., A. Bennett, R. Isaacs and J. Landis. 2015. Bees of the Great Lakes region and wildflowers to support them. Michigan State University Extension publication No. E3282. [www.canr.msu.edu/resources/bees\\_of\\_the\\_great\\_lakes\\_region\\_and\\_wildflowers\\_to\\_support\\_them\\_e3282](http://www.canr.msu.edu/resources/bees_of_the_great_lakes_region_and_wildflowers_to_support_them_e3282)

NDSU Extension does not endorse commercial products or companies even though reference may be made to tradenames, trademarks or service names. NDSU encourages you to use and share this content, but please do so under the conditions of our Creative Commons license. You may copy, distribute, transmit and adapt this work as long as you give full attribution, don't use the work for commercial purposes and share your resulting work similarly. For more information, visit [www.ag.ndsu.edu/agcomm/creative-commons](http://www.ag.ndsu.edu/agcomm/creative-commons).

## For more information on this and other topics, see [www.ndsu.edu/extension](http://www.ndsu.edu/extension)

County commissions, North Dakota State University and U.S. Department of Agriculture cooperating. NDSU does not discriminate in its programs and activities on the basis of age, color, gender expression/identity, genetic information, marital status, national origin, participation in lawful off-campus activity, physical or mental disability, pregnancy, public assistance status, race, religion, sex, sexual orientation, spousal relationship to current employee, or veteran status, as applicable. Direct inquiries to Vice Provost for Title IX/ADA Coordinator, Old Main 201, NDSU Main Campus, 701-231-7708, [ndsuea@ndsu.edu](mailto:ndsuea@ndsu.edu). This publication will be made available in alternative formats for people with disabilities upon request, 701-231-7881. 1.764M-8-18; web-12-23