

PP1867 (Reviewed January 2024)

# Soybean Disease Diagnostic Series

**Samuel Markell**

Professor and Extension Specialist  
Department of Plant Pathology  
North Dakota State University

**Dean Malvick**

Professor and Extension Specialist  
Department of Plant Pathology  
University of Minnesota



NDSU

EXTENSION

## Root Diseases

Fusarium root rot .....	PP1867-1
Phytophthora root and stem rot .....	PP1867-2
Pythium root rot .....	PP1867-3
Rhizoctonia root rot.....	PP1867-4
Seed and seedling rot complex .....	PP1867-5
Soybean cyst nematode .....	PP1867-6
Sudden death syndrome .....	PP1867-7

## Stem Diseases

Anthracnose .....	PP1867-8
Brown stem rot.....	PP1867-9
Charcoal rot .....	PP1867-10
Pod and stem blight .....	PP1867-11
Stem canker .....	PP1867-12
White mold.....	PP1867-13

## Leaf Diseases

Bacterial blight .....	PP1867-14
Bacterial pustule .....	PP1867-15
Bean pod mottle virus .....	PP1867-16
Cercospora leaf blight.....	PP1867-17
Downy mildew.....	PP1867-18
Frogeye leaf spot .....	PP1867-19
Phyllosticta leaf spot.....	PP1867-20
Powdery mildew .....	PP1867-21
Septoria brown spot.....	PP1867-22
Soybean mosaic virus .....	PP1867-23

## Additional Diseases (not known to occur in ND/MN)

Soybean rust .....	PP1867-24
--------------------	-----------

Cover photo: Sam Markell, NDSU

NDSU Extension does not endorse commercial products or companies even though reference may be made to tradenames, trademarks or service names. NDSU encourages you to use and share this content, but please do so under the conditions of our Creative Commons license. You may copy, distribute, transmit and adapt this work as long as you give full attribution, don't use the work for commercial purposes and share your resulting work similarly. For more information, visit [www.ag.ndsu.edu/agcomm/creative-commons](http://www.ag.ndsu.edu/agcomm/creative-commons).

**For more information on this and other topics, see  
[www.ag.ndsu.edu/extension](http://www.ag.ndsu.edu/extension)**

County commissions, North Dakota State University and U.S. Department of Agriculture cooperating. NDSU does not discriminate in its programs and activities on the basis of age, color, gender expression/identity, genetic information, marital status, national origin, participation in lawful off-campus activity, physical or mental disability, pregnancy, public assistance status, race, religion, sex, sexual orientation, spousal relationship to current employee, or veteran status, as applicable. Direct inquiries to Vice Provost for Title IX/ADA Coordinator, Old Main 201, NDSU Main Campus, 701-231-7708, [ndsuoaa@ndsu.edu](mailto:ndsuoaa@ndsu.edu). This publication will be made available in alternative formats for people with disabilities upon request, 701-231-7881. 2.5M-1-18, 1.484M-11-18, 250-7-21, 538-12-22, 240-1-24



# Fusarium root rot

*Fusarium solani*, *F. oxysporum*, *F. tricinctum*  
and other *Fusarium* species (fungi)

Photo: B. Nelson, NDSU

**Figure 1**



Photo: Giesler, Univ. of Nebraska

**Figure 2**



**Figure 3**



Photo: J. Bienappf, Univ. of Minnesota

**Figure 4**



Photo: D. Mueller, Iowa State Univ.



# Fusarium root rot

*Fusarium solani*, *F. oxysporum*, *F. tricinctum*  
and other *Fusarium* species (fungi)

**AUTHORS:** Dean Malvick and Sam Markell

## SYMPTOMS

- **Brown to black discoloration and rot of roots, especially the taproot**
- **Plant stunting and yellowing of leaves may occur if root rot is severe**
- **Seedling damping-off**

**FIGURE 1** - Dark brown/black discoloration of roots

**FIGURE 2** - Root rot and dieback of tap root

**FIGURE 3** - Seedling damping-off

**FIGURE 4** - Plant chlorosis

## FACTORS FAVORING DEVELOPMENT

- Soil compaction
- Presence of soybean cyst nematode (SCN)
- Plant stress
- Drought

## IMPORTANT FACTS

- Disease can infect and kill seedlings and damage older plants
- *Fusarium* survives for long periods in soil
- Dry edible beans, corn and pulse crops are hosts
- *Fusarium* is dispersed with soil (on equipment, in water, by wind, etc.)
- Management: improve soil drainage, reduce compaction, fungicide seed treatments
- Commonly confused with other roots rots, SCN and iron deficiency chlorosis

Card 1 of 24



# Phytophthora root and stem rot

*Phytophthora sojae* (oomycete)



**Figure 1**

Photo: A. Dorrance, Ohio State Univ.



**Figure 2**

Photo: D. Malvick, Univ. of Minnesota



**Figure 3**

Photo: A. Dorrance, Ohio State Univ.



# Phytophthora root and stem rot

*Phytophthora sojae* (oomycete)

**AUTHORS:** Sam Markell, Dean Malvick and Berlin Nelson

## SYMPTOMS

- Seeds may rot and/or seedlings may die before or after emergence (damping-off)
- Mid- to late-season symptoms include a chocolate brown stem lesion extending up from the soil line
- Leaf chlorosis, necrosis and plant wilting can develop
- Frequently occurs in patches of fields and low areas

**FIGURE 1** - Close-up of lower stem lesion

**FIGURE 2** - Lower stem lesion and wilting

**FIGURE 3** - Severe infection in field

## FACTORS FAVORING DEVELOPMENT

- Excessive moisture, saturated soil and/or flooding, especially early in the season
- Poorly drained, heavy clay or compacted soils
- Short/no crop rotation

## IMPORTANT FACTS

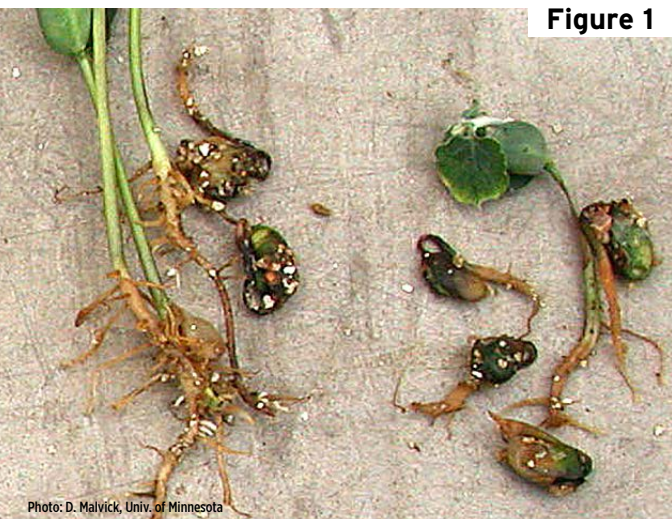
- Can cause significant yield loss
- Causes most damage to plants in early vegetative growth stages
- The pathogen is specific to soybeans
- Management tools available include genetic resistance and seed treatments
- The pathogen has many pathotypes and many can overcome Rps genetic resistance
- Commonly confused with other root rot diseases

Card 2 of 24



# Pythium root rot

*Pythium ultimum*  
and other *Pythium* species (oomycete)



**Figure 1**

Photo: D. Malvick, Univ. of Minnesota



**Figure 2**

Photo: M. Chilvers, Michigan State Univ.



**Figure 3**

Photo: A. Robertson, Iowa State Univ.



# Pythium root rot

*Pythium ultimum*  
and other *Pythium* species (oomycete)

**AUTHORS:** Dean Malvick and Sam Markell

## SYMPTOMS

- Soft, slimy rot of seeds in ground
- Light brown rot of outer part of roots (cortex)
- Damping-off of seedlings

**FIGURE 1** - Seed rotting due to *Pythium*

**FIGURE 2** - Damping-off of seedlings

**FIGURE 3** - Light brown infected roots

## FACTORS FAVORING DEVELOPMENT

- Persistent wet soil after planting
- Soil compaction, heavy soil with high clay content
- Slow growth of seedlings and plant stress

## IMPORTANT FACTS

- *Pythium* survives for years in soil
- Pathogen causes most damage to seeds and seedlings, but may damage roots of older plants
- Dry edible beans, corn and other crops can be hosts
- *Pythium* is dispersed with soil (on equipment, in water, by wind, etc.)
- Management: improve soil drainage, reduce compaction, some seed treatments
- Symptoms on seed and seedlings very similar to *Phytophthora* damage
- Commonly confused with other seedling diseases





# Rhizoctonia root rot

*Rhizoctonia solani* (fungus)

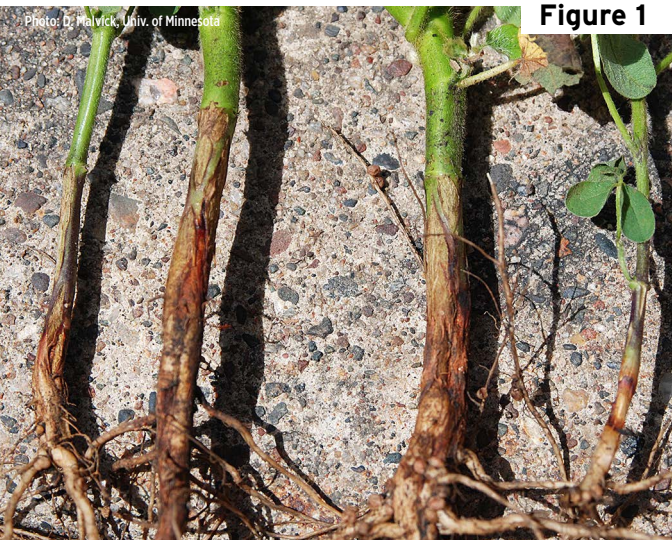


Photo: D. Malvick, Univ. of Minnesota

**Figure 1**



Photo: D. Malvick, Univ. of Minnesota

**Figure 2**



Photo: D. Malvick, Univ. of Minnesota

**Figure 3**



# Rhizoctonia root rot

*Rhizoctonia solani* (fungus)

**AUTHORS:** Dean Malvick and Sam Markell

## SYMPTOMS

- **Rusty-brown, dry, sunken lesions on lower parts of stems**
- **Dark brown lesions than girdle the stems near the soil**
- **Plants stunted, yellow, and wilting**

**FIGURE 1** - Rusty-brown lesions on soybean stems

**FIGURE 2** - Soybean seedlings with girdled stems

**FIGURE 3** - Seedlings dying in a row

## FACTORS FAVORING DEVELOPMENT

- Warm and moist soil while plants are in early vegetative stages
- Delayed planting in spring due to rain
- High soil organic matter
- Plant stress due to physical or chemical/herbicide injury

## IMPORTANT FACTS

- Dry edible beans, corn, sugar beet and pulse crops can be hosts
- Causes most damage to plants in early vegetative growth stages
- *Rhizoctonia* is dispersed with soil (on equipment, in water, by wind, etc.)
- Management: some seed treatments, crop rotation, tillage, early planting
- Soybean varieties vary in susceptibility to *Rhizoctonia*
- Commonly confused with other roots rots

Card 4 of 24



# Seed and seedling disease complex

*Pythium* (oomycete), *Phytophthora* (oomycete),  
*Rhizoctonia* (fungus), *Fusarium* (fungus)

Figure 1



Photo: D. Malvick, Univ. of Minnesota

Figure 2



Photo: D. Malvick, Univ. of Minnesota

Figure 3

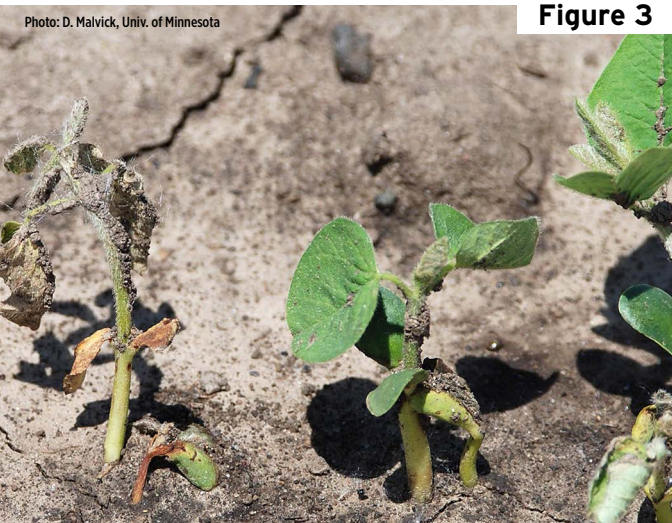


Photo: D. Malvick, Univ. of Minnesota



# Seed and seedling disease complex

*Pythium* (oomycete), *Phytophthora* (oomycete),  
*Rhizoctonia* (fungus), *Fusarium* (fungus)

**AUTHORS:** Dean Malvick and Sam Markell

## SYMPTOMS

- Rotting of seed in the ground
- Pre-emergence death
- Post-emergence death and stunting
- Soft, tan roots with intact steel (*Pythium* and *Phytophthora*)
- Dark brown discoloration and rot of tap roots (*Fusarium*)
- Rusty-brown lesions on stem and roots (*Rhizoctonia*)

**FIGURE 1** - Seedling decomposing due to infection

**FIGURE 2** - Pre-emergence death of seedling

**FIGURE 3** - Post-emergence death of seedling

## FACTORS FAVORING DEVELOPMENT

- Wet soil
- Delayed germination and growth
- Poor-quality seed
- Plant stress

## IMPORTANT FACTS

- Pathogens are favored by different conditions for infection and disease development
- Multiple pathogens often infect seeds/seedlings
- Difficult to diagnose principle pathogen
- Symptoms can look similar for different pathogens, but management may differ
- Management options: soil drainage, tillage, varieties with resistance, seed treatments
- Seed treatment ingredients vary in efficacy for different pathogens
- Commonly confused with water damage

Card 5 of 24



# Soybean cyst nematode (SCN)

*Heterodera glycines* (plant parasitic nematode)

Photo: S. Markell, NDSU



Figure 1

Photo: S. Markell, NDSU



Figure 2

Photo: S. Markell, NDSU



Figure 3



# Soybean cyst nematode (SCN)

*Heterodera glycines* (plant parasitic nematode)

**AUTHORS:** Sam Markell and Dean Malvick

## SYMPTOMS

- Small (approximately 1/32 inch) lemon-shaped female worms (cysts) on roots
- Cysts' color ranges from cream to dark brown
- Above-ground symptoms often are absent
- Soybeans can become stunted and yellow

**FIGURE 1** - White SCN females (cysts) and a nodule on soybean roots

**FIGURE 2** - Mature brown cysts

**FIGURE 3** - Yellowed areas near field entrance caused by severe SCN

## FACTORS FAVORING DEVELOPMENT

- Short crop rotation with soybeans and/or dry edible beans
- High soil pH, light soil texture
- Dry growing seasons

## IMPORTANT FACTS

- SCN is the most yield-limiting disease in the U.S.
- SCN can make other diseases (sudden death syndrome, brown stem rot) worse
- Soybeans, dry edible beans and several weeds are hosts
- SCN is dispersed with soil (on equipment, in water, by wind, etc.)
- Soil testing is the most reliable way to determine if you have SCN
- Management tools available include crop rotation, variety resistance and possibly seed treatments
- SCN is overcoming PI88788 genetic resistance
- Commonly confused with roots rots, iron deficiency chlorosis, other abiotic stress

Card 6 of 24



# Sudden death syndrome (SDS)

*Fusarium virguliforme* (fungus)

**Figure 1**

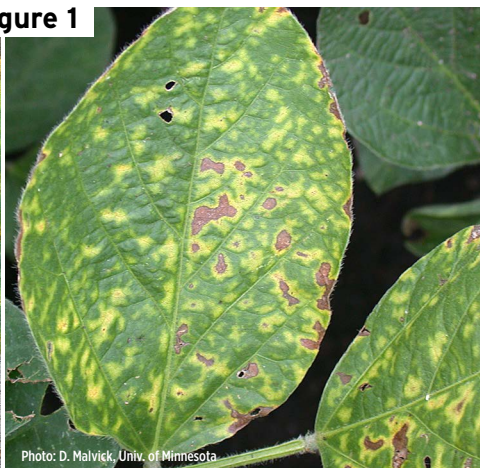


Photo: D. Malvick, Univ. of Minnesota

**Figure 2**

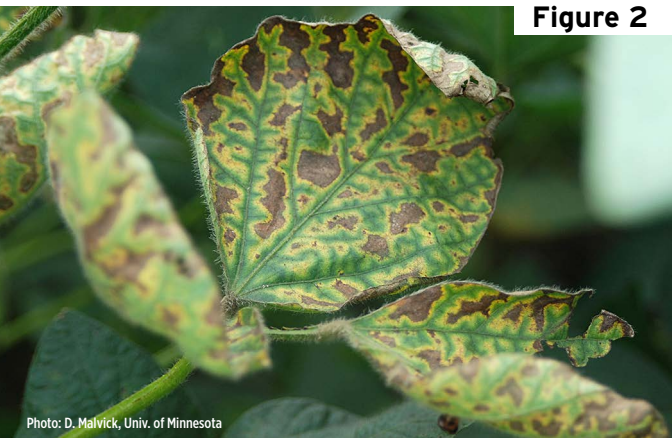


Photo: D. Malvick, Univ. of Minnesota

**Figure 3**



Photo: D. Malvick, Univ. of Minnesota

**Figure 4**



Photo: D. Malvick, Univ. of Minnesota



# Sudden death syndrome (SDS)

*Fusarium virguliforme* (fungus)

**AUTHORS:** Dean Malvick and Sam Markell

## SYMPTOMS

- Yellow and brown discoloration between leaf veins
- Tan stem under the epidermis near the soil line, while pith remains white
- Symptoms develop in plant seed fill stages (August)
- Leaflets can fall and petioles remain attached to plant
- Root rot and occasionally blue fungal growth on root

**FIGURE 1** - (L) Internal stem browning; (R) Early chlorotic blotches between veins

**FIGURE 2** - Severe leaf symptoms

**FIGURE 3** - Severe infection in a patch in a field

**FIGURE 4** - Root rot and blue fungal growth on root

## FACTORS FAVORING DEVELOPMENT

- Wet soil for two to four weeks after planting
- Field history of SDS
- Compacted soil, poor drainage
- Periodic heavy rain and moist soil through mid-Aug.
- High soybean cyst nematode populations

## IMPORTANT FACTS

- Common in southern and central Minnesota, less common (but increasing) in northern Minnesota and North Dakota
- Pathogen can cause root rot of dry edible bean and some other legumes
- Pathogen dispersed with soil (on equipment, in water, by wind, etc.)
- Management options include varieties with resistance to SDS and seed treatments
- Commonly confused with brown stem rot

Card 7 of 24





# Anthracnose

*Colletotrichum truncatum*  
or other *Colletotrichum* species (fungi)

Photo: D. Malvick, Univ. of Minnesota

**Figure 1**



Photo: S. Markell, NDSU

**Figure 2**



Photo: S. Markell, NDSU

**Figure 3**





# Anthracnose

*Colletotrichum truncatum*  
or other *Colletotrichum* species (fungi)

**AUTHORS:** Sam Markell and Dean Malvick

## SYMPTOMS

- Symptoms usually not seen until plants reach maturity
- Dark brown patches may appear on stems, pods and petioles
- Small black fungal spots develop in irregular patterns on stems, pods and petiole
- Black, infected areas covered with tiny black spines (setae) that can be seen with a 10X hand lens

**FIGURE 1** - Irregular-shaped blotches on stem

**FIGURE 2** - Abundant black fungal growths of irregular arrangement and size

**FIGURE 3** - Close-up appearance of fungal growths

## FACTORS FAVORING DEVELOPMENT

- Warm and wet/humid weather
- Planting infected seed
- Short/no crop rotation

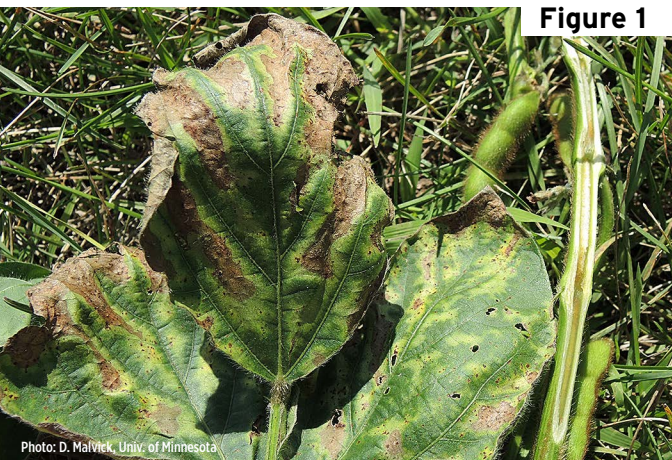
## IMPORTANT FACTS

- A common late-season disease that rarely causes significant yield loss
- Pathogen(s) have a wide host range and may infect other legume crops and weeds
- Pathogen can be seedborne
- Commonly confused with pod and stem blight, stem canker, charcoal rot



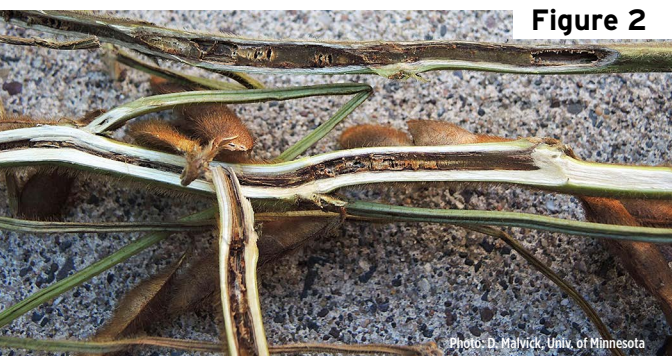
# Brown stem rot (BSR)

*Cadophora gregata* (fungus)



**Figure 1**

Photo: D. Malvick, Univ. of Minnesota



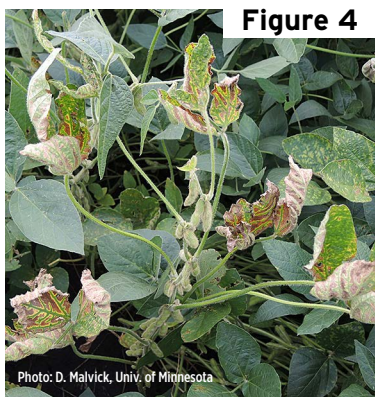
**Figure 2**

Photo: D. Malvick, Univ. of Minnesota



**Figure 3**

Photo: D. Malvick, Univ. of Minnesota



**Figure 4**

Photo: D. Malvick, Univ. of Minnesota



# Brown stem rot (BSR)

*Cadophora gregata* (fungus)

**AUTHORS:** Dean Malvick and Sam Markell

## SYMPTOMS

- **Brown pith in stem, especially in lower stem**
- **Brown and yellow discoloration between leaf veins may be present**
- **Symptoms commonly develop in mid-August**

**FIGURE 1** - Light brown discoloration in pith and leaf

**FIGURE 2** - Dark brown discoloration in pith of stem

**FIGURE 3** - Brown and yellow discoloration between veins

**FIGURE 4** - Symptoms on leaves of whole plant

## FACTORS FAVORING DEVELOPMENT

- Short/no crop rotation
- Wet and cool weather in July/August
- History of disease in a field
- Susceptible soybean varieties
- Presence of soybean cyst nematode

## IMPORTANT FACTS

- Stems should be longitudinally split to identify BSR
- Commonly confused with sudden death syndrome
- Pathogen overwinters/survives in infected soybean stems
- BSR pathogen dispersed with soil (on equipment, in water, by wind, etc.)
- Soybean is only known definite host
- Two pathogen types: type A causes leaf and stem symptoms; type B primarily internal stem symptoms only
- Type B more common in our region
- Management options: crop rotation and varieties resistant to BSR

Card 9 of 24



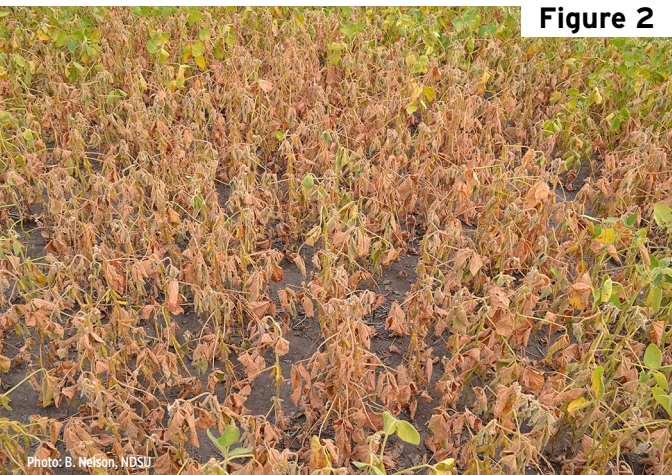
# Charcoal rot

*Macrophomina phaseolina* (fungus)



**Figure 1**

Photo: B. Nelson, NDSU



**Figure 2**

Photo: B. Nelson, NDSU



**Figure 3**

Photo: B. Nelson, NDSU



**Figure 4**

Photo: S. Markell, NDSU



# Charcoal rot

*Macrophomina phaseolina* (fungus)

**AUTHORS:** Sam Markell and Dean Malvick

## SYMPTOMS

- Symptoms usually not apparent until flowering or later
- Taproot and lower stem may appear gray/silver
- Numerous black fungal specks (microsclerotia) under epidermis give a “charcoal” appearance
- Premature death with wilted leaves attached
- Frequently occurs in patches in fields

**FIGURE 1** - Large patches of soybean with charcoal rot

**FIGURE 2** - Patch of wilting soybeans

**FIGURE 3** - Infected (L and C) and healthy soybean (R)

**FIGURE 4** - External gray lesion peeling away, revealing profuse “charcoal” sclerotia

## FACTORS FAVORING DEVELOPMENT

- Hot temperatures
- Drought stress

## IMPORTANT FACTS

- Yield loss may occur in hot, dry growing seasons
- Disease typically most severe in drought-prone areas of fields
- Very wide host range, which includes corn, sunflower, other legume crops and weeds
- Commonly confused with anthracnose, Phytophthora stem rot, pod and stem blight, stem canker



# Pod and stem blight/ Phomopsis seed decay

*Diaporthe longicolla* (fungi) and *D. sojae*

Photo: D. Malvick, Univ. of Minnesota

**Figure 1**



**Figure 2**



Photo: D. Malvick, Univ. of Minnesota



# Pod and stem blight/ Phomopsis seed decay

*Diaporthe longicolla* (fungi) and *D. sojae*

**AUTHORS:** Sam Markell and Dean Malvick

## SYMPTOMS

- Small, raised black dots (pycnidia) arranged in distinct rows on stem, pods and petioles
- Tops of plants may discolor and die, leading to plant death
- Symptoms often not apparent until plants near maturity
- Wavy, black zone lines inside infected stems and roots may occur (see stem canker)
- Seed may be cracked, shriveled, moldy and have poor germination

**FIGURE 1** - Linear rows of raised black dots

**FIGURE 2** - Infected (L) and healthy (R) plants

## FACTORS FAVORING DEVELOPMENT

- Warm and humid weather
- Short/no crop rotation
- Planting infected seed
- Delayed harvest due to wet weather

## IMPORTANT FACTS

- Yield loss and reduction in seed quality may occur
- Host range includes dry edible bean and dry edible pea
- Pathogen survives in crop residue and seed
- Pathogen is widespread, even in apparently healthy plants
- Black dots arranged in rows are diagnostic (anthracnose and charcoal rot dots are random)
- Commonly confused with anthracnose, charcoal rot and stem canker

Card 11 of 24





# Stem canker

*Diaporthe caulivora* (northern stem canker) and  
*D. aspalathi* (southern stem canker) (fungi)

D. Malvick, Univ. of Minnesota



**Figure 1**

Photo: S. Markell, NDSU



**Figure 2**

Photo: S. Markell, NDSU



**Figure 3**



# Stem canker

*Diaporthe caulivora* (northern stem canker) and  
*D. aspalathi* (southern stem canker) (fungi)

**AUTHORS:** Sam Markell and Dean Malvick

## SYMPTOMS

- **Reddish-brown lesions on the lower stem starting at branch points/nodes**
- **Lesions expand and may become sunken cankers**
- **Tiny black fungal structures may be produced on lesions**
- **Narrow black “zone lines” sometimes under epidermis, but importantly, zone lines also are associated with pod and stem blight**

**FIGURE 1** - Reddish-brown stem canker lesion

**FIGURE 2** - Sunken canker on lower stem of mature plant

**FIGURE 3** - Zone lines beneath epidermis of sunken canker

## FACTORS FAVORING DEVELOPMENT

- Extended periods of wet weather (one to four days) with moderate temperatures (70 to 85 F)
- Short/no crop rotation in fields with history of disease
- Reduced tillage

## IMPORTANT FACTS

- Yield loss can occur if disease is widespread in a field and kills plants before pod fill
- Management tools include crop rotation (wheat, corn, etc.), resistant varieties and foliar fungicides
- Commonly confused with anthracnose, charcoal rot, late-season *Phytophthora* root rot, and pod and stem blight



# White mold (*Sclerotinia stem rot*)

*Sclerotinia sclerotiorum* (fungus)



**Figure 1**

Photo: D. Malvick, Univ. of Minnesota



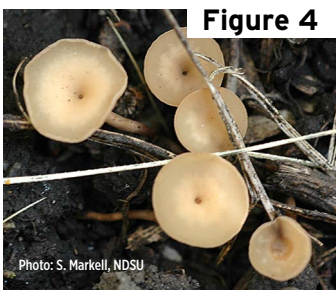
**Figure 2**

Photo: M. Gilley, NDSU



**Figure 3**

Photo: S. Markell, NDSU



**Figure 4**

Photo: S. Markell, NDSU



# White mold (*Sclerotinia stem rot*)

*Sclerotinia sclerotiorum* (fungus)

**AUTHORS:** Sam Markell and Dean Malvick

## SYMPTOMS

- Stem lesions begin as water-soaked spots near nodes
- Lesions enlarge, fluffy white fungal growth develops on moist stems
- Infected stems become bleached white and may shred
- Hard black structures (sclerotia) form on and in infected tissue

**FIGURE 1** - Lesions with white mold and sclerotia

**FIGURE 2** - Severe white mold infection

**FIGURE 3** - Black sclerotia among shriveled seeds

**FIGURE 4** - Apothecia

## FACTORS FAVORING DEVELOPMENT

- Wet soils prior to and during soybean flowering
- Frequent wetness (rain, fog, heavy dew) and cool temperatures during bloom
- Dense plant canopy, high fertility, high plant populations
- History of white mold in field

## IMPORTANT FACTS

- Severe yield losses can occur when July and early August are cool and wet
- Many broadleaf crops and weeds are hosts
- Pathogen survives in soil for many years as sclerotia
- Sclerotia produce apothecia (about 1/4-inch mushrooms), which produce ascospores that initiate infection
- Management options: partially resistance varieties, increase plant spacing and fungicides
- Apothecia commonly confused with bird's nest fungi

Card 13 of 24



# Bacterial blight

*Pseudomonas savastanoi* pv. *glycinea* (bacteria)

**Figure 1**



Photo: S. Markell, NDSU

**Figure 2**

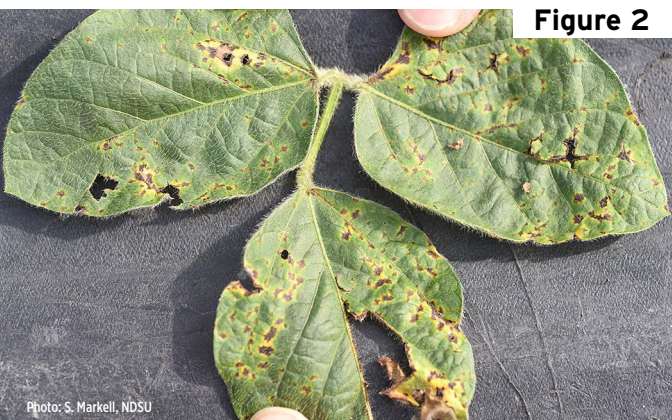


Photo: S. Markell, NDSU

**Figure 3**

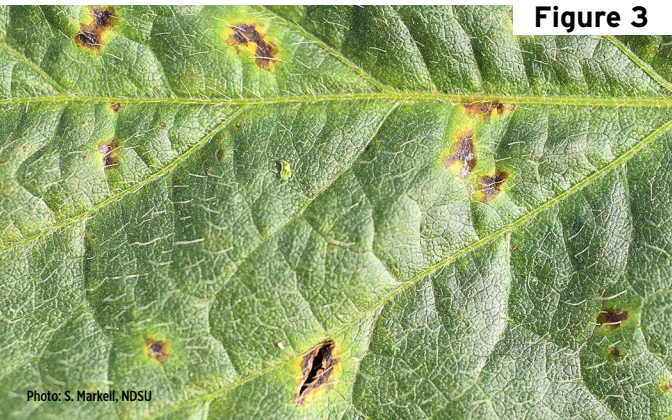


Photo: S. Markell, NDSU



# Bacterial blight

*Pseudomonas savastanoi* pv. *glycinea* (bacteria)

**AUTHORS:** Sam Markell and Dean Malvick

## SYMPTOMS

- Typically observed first in upper canopy in July
- Small, water-soaked and angular leaf lesions
- Lesion centers turn brown and are surrounded by a bright yellow halo
- Lesions often coalesce and leaves will tatter
- Often widespread distribution in field

**FIGURE 1** - Brown angular lesions with bright yellow halos

**FIGURE 2** - Coalescing lesions and leaf tattering

**FIGURE 3** - Magnified lesions

## FACTORS FAVORING DEVELOPMENT

- Cool temperatures, frequent rains and thunderstorms
- Weather that damages plant tissue (hail, high winds, etc.)
- Short/no crop rotation
- Planting infected seed

## IMPORTANT FACTS

- Widespread but rarely economically important
- Lesions may occur on stem, petiole and pod
- Pathogen survives and can be spread with seed and infested crop residue
- Fungicides are not effective
- Commonly confused with Septoria brown spot, bacterial pustule, downy mildew

Card 14 of 24



# Bacterial pustule

*Xanthomonas axonopodis* pv. *glycines* (bacteria)

Photo: S. Markell, NDSU

**Figure 1**



Photo: S. Markell, NDSU

**Figure 2**

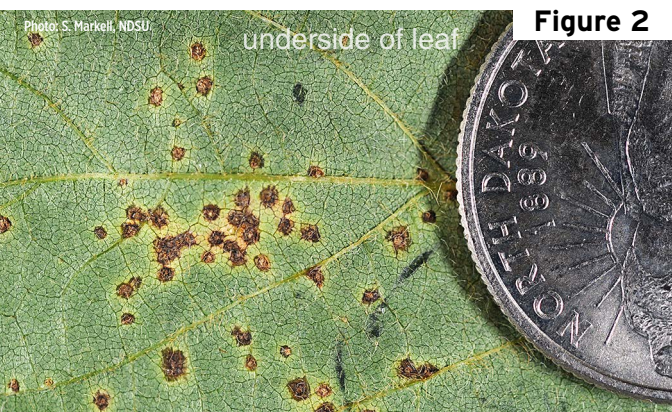


Photo: S. Markell, NDSU

**Figure 3**





# Bacterial pustule

*Xanthomonas axonopodis* pv. *glycines* (bacteria)

**AUTHORS:** Sam Markell and Dean Malvick

## SYMPTOMS

- Lesions begin as small (1/16 to 1/4 inch) light green specks with yellow halos
- Lesion centers turn brown
- Raised pustules appear in lesions

**FIGURE 1** - Lesions with chlorotic halos on upper side of leaf

**FIGURE 2** - Lesions and pustules on underside of leaf

**FIGURE 3** - Pustules (approximately 5 to 10X)

## FACTORS FAVORING DEVELOPMENT

- Wet and rainy weather
- Prolonged humid conditions
- Warm to hot temperatures

## IMPORTANT FACTS

- Sporadic in Minnesota and North Dakota
- Unlikely to cause yield loss
- Can be mistaken for soybean rust, a disease that has not occurred in Minnesota or North Dakota
- Commonly confused with bacterial blight or Septoria brown spot





# Bean pod mottle virus

Photo: A. Dorrance, Ohio State Univ.

**Figure 1**

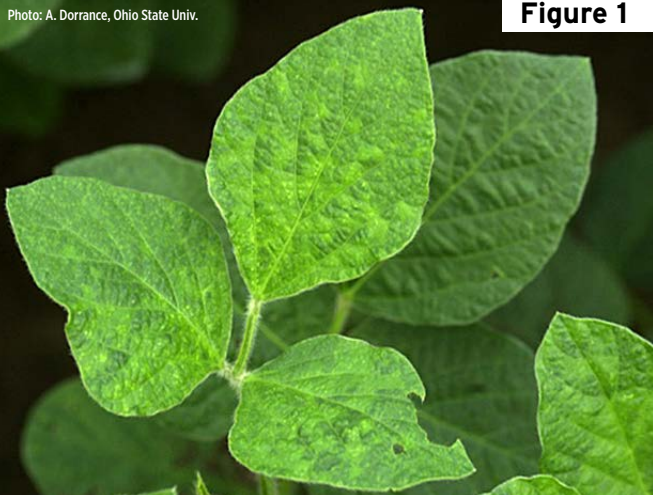


Photo: A. Dorrance, Ohio State Univ.

**Figure 2**



**Figure 3**



Photo: Univ. of Illinois



# Bean pod mottle virus

**AUTHORS:** Dean Malvick and Sam Markell

## SYMPTOMS

- Green to yellow mottling of young leaves
- Leaves may become puckered and wrinkled
- Symptoms may not be visible during high temperatures or after pod set
- Seed may become mottled with dark stains

**FIGURE 1** - Light green to yellow leaf mottling

**FIGURE 2** - Wrinkling, puckering and light green mottling

**FIGURE 3** - Leaf puckering and wrinkling

## FACTORS FAVORING DEVELOPMENT

- High populations of bean leaf beetle (or other beetles) early in the season
- Cool weather

## IMPORTANT FACTS

- Not thought to be common in Minnesota and North Dakota
- Virus can be transmitted by bean leaf beetle or other leaf feeding beetles
- Infection primarily occurs early in the season
- Host range includes dry edible bean, clovers and other legumes
- Management options: delay planting, seed applied insecticides
- Commonly confused with other viruses and possibly herbicide injury

Card 16 of 24



# Cercospora leaf blight

*Cercospora kikuchii* (fungus)

**Figure 1**

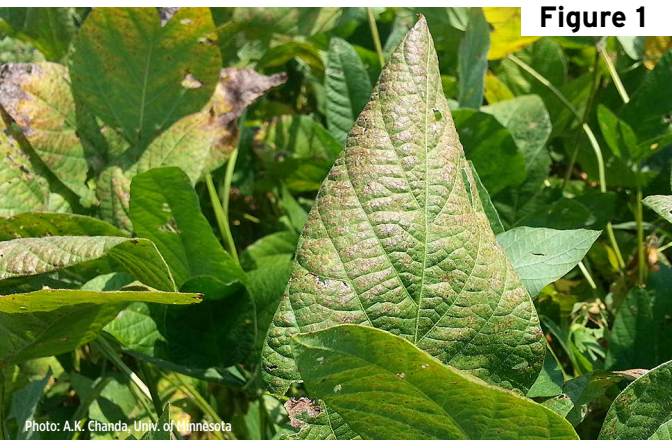


Photo: A.K. Chanda, Univ. of Minnesota

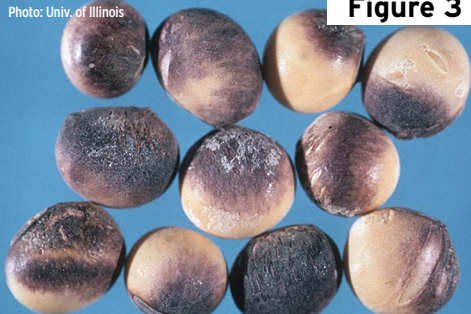
**Figure 2**



Photo: A.K. Chanda, Univ. of Minnesota

**Figure 3**

Photo: Univ. of Illinois





# Cercospora leaf blight

*Cercospora kikuchii* (fungus)

**AUTHORS:** Dean Malvick and Sam Markell

## SYMPTOMS

- Purple to bronze discoloration of upper leaf surfaces
- Red-brown spots on both leaf surfaces
- Large necrotic areas can develop on leaves, followed by leaf drop
- Seed coats can develop purple discoloration

**FIGURE 1** - Purple discoloration of leaf

**FIGURE 2** - Bronze discoloration and death of leaf tissue

**FIGURE 3** - Purple seed stain

## FACTORS FAVORING DEVELOPMENT

- High humidity and warm temperatures
- Lack of crop rotation

## IMPORTANT FACTS

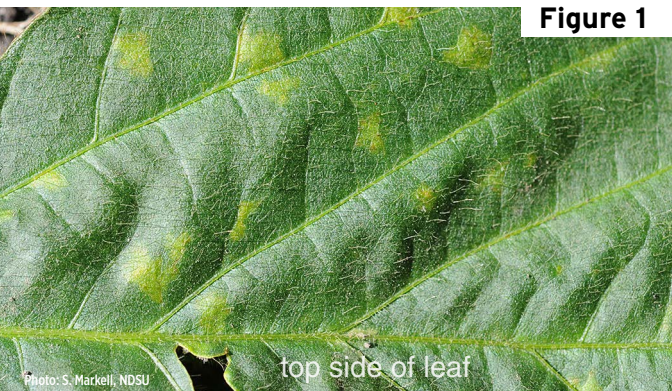
- Disease is more common and severe in southern U.S.
- Pathogen overwinters on infested soybean debris and seed
- Plants susceptible from flowering to maturity
- Management options: pathogen-free seed, susceptible varieties, crop rotation and fungicides
- Commonly confused with sunscald



# Downy mildew

*Peronospora manshurica* (Oomycete)

**Figure 1**



**Figure 2**



**Figure 3**





# Downy mildew

*Peronospora manshurica* (Oomycete)

**AUTHORS:** Sam Markell and Dean Malvick

## SYMPTOMS

- Lesions begin as discrete pale green to light yellow spots on top side of leaves
- Fluffy tan tufts of fungal growth occur opposite lesions on underside of leaves
- Lesions become brighter yellow and turn brown with age

**FIGURE 1** - Discrete lesions

**FIGURE 2** - Fungal growth opposite lesions (inset: magnification of fungal growth)

**FIGURE 3** - Severe infection

## FACTORS FAVORING DEVELOPMENT

- Frequent and prolonged periods of high humidity or free moisture (dew)
- Moderate temperatures
- Short crop rotation
- Planting infected seed or field history of downy mildew

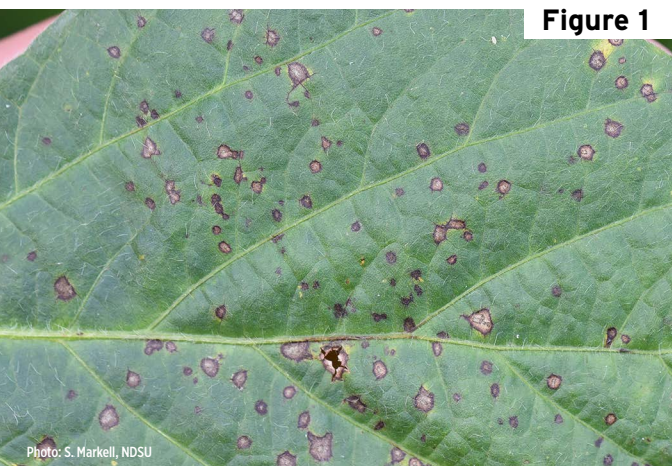
## IMPORTANT FACTS

- Yield loss thought to be rare; however, severe outbreaks have occurred in North Dakota and Minnesota
- Pathogen is specific to soybeans and will not cause downy mildew of other crops
- Can be confused with Septoria brown spot, powdery mildew and bacterial diseases



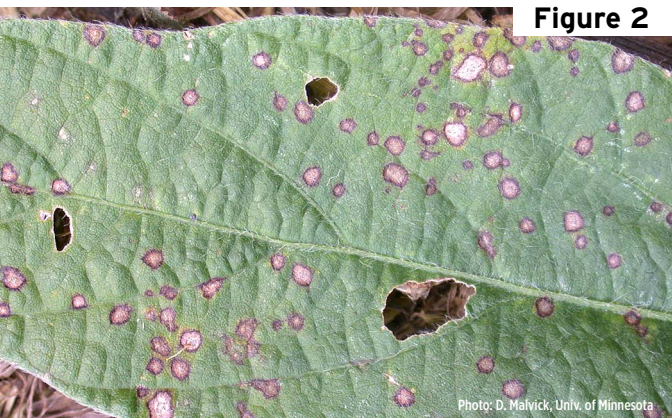
# Frogeye leaf spot

*Cercospora sojina* (fungus)



**Figure 1**

Photo: S. Markell, NDSU

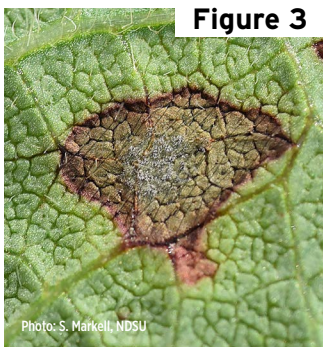


**Figure 2**

Photo: D. Malvick, Univ. of Minnesota



Photo: S. Markell, NDSU



**Figure 3**

Photo: S. Markell, NDSU



# Frogeye leaf spot

*Cercospora sojina* (fungus)

**AUTHORS:** Dean Malvick and Sam Markell

## SYMPTOMS

- Lesions begin as dark spots that vary in size
- Center of lesions become tan to gray and surrounded by a reddish-brown to purple ring
- Fuzzy gray mold may occur in lesion centers
- Spots may coalesce, fall out and kill large parts of leaves

**FIGURE 1** - Lesions of various size and stages of development

**FIGURE 2** - Spots and patterns of lesion development on leaf

**FIGURE 3** - Upper and underside of lesion with fuzzy gray mold.

## FACTORS FAVORING DEVELOPMENT

- Warm and humid weather
- Highly susceptible soybean varieties

## IMPORTANT FACTS

- Disease more common in southern areas of the Midwest
- Pathogen overwinters in infected soybean residue and seed
- Management options: crop rotation, tillage and fungicides
- Pathogen resistance to strobilurin (QoI, FRAC 11) fungicides is common in Minnesota and North Dakota
- Commonly confused with bacterial blight, *Phyllosticta* leaf spot and *Septoria* brown spot

Card 19 of 24





# Phyllosticta leaf spot

*Phyllosticta sojicola* (fungi)



Figure 1

Photo: K. Bissonnette



Figure 2

Photo: K. Bissonnette



Figure 3

Photo: K. Bissonnette



# Phyllosticta leaf spot

*Phyllosticta sojicola* (fungi)

**AUTHORS:** Sam Markell and Dean Malvick

## SYMPTOMS

- May occur anytime in growing season
- Leaf lesions begin as pale green spots
- Lesions become gray to tan with a narrow dark purple to brown margin
- Lesions may be oval, circular, irregular or V-shaped
- Small black specs (pycnidia) may appear in lesion centers
- Lesions also may occur on petioles, stems and pods

**FIGURE 1** - Gray irregular-shaped lesions with dark narrow margins

**FIGURE 2** - V-shaped lesion with small black specs (pycnidia)

**FIGURE 3** - Large lesion with numerous pycnidia

## FACTORS FAVORING DEVELOPMENT

- Cool temperatures
- Wet conditions
- Short crop rotations
- Infected seed

## IMPORTANT FACTS

- Minor soybean disease that rarely impacts yield
- Appears to be uncommon in Minnesota and North Dakota
- Pathogen survives in infested crop residue and seed
- Commonly confused with frogeye leaf spot, bacterial blight, Septoria brown spot

Card 20 of 24



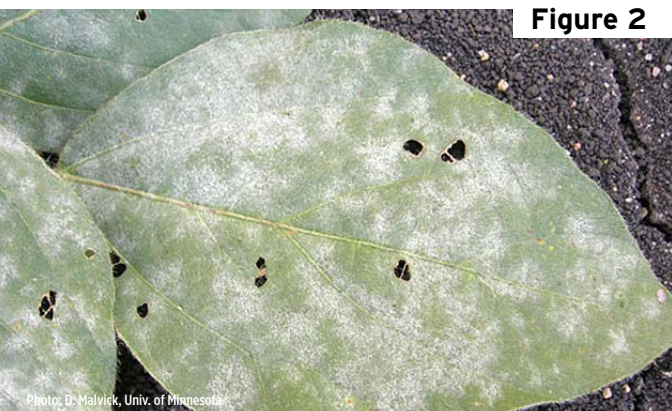
# Powdery mildew

*Erysiphe diffusa* and *E. glycines* (fungi)



**Figure 1**

Photo: D. Malvick, Univ. of Minnesota



**Figure 2**

Photo: D. Malvick, Univ. of Minnesota



**Figure 3**

Photo: D. Malvick, Univ. of Minnesota



# Powdery mildew

*Erysiphe diffusa* and *E. glycines* (fungi)

**AUTHORS:** Sam Markell and Dean Malvick

## SYMPTOMS

- Powdery white tufts of fungal growth on upper side of leaf
- Fungal growth may look like white flour sprinkled on the leaves
- Fungal growth can expand and may cover entire leaf surface
- Small black specs in growth may be observed late in season
- White fungal growth can be rubbed off leaf easily

**FIGURE 1** - White tufts of fungal growth

**FIGURE 2** - Severe infection covering leaf

**FIGURE 3** - Infection spreading in hot spot

## FACTORS FAVORING DEVELOPMENT

- Temperatures from 64 to 75 F
- Low humidity with periods of limited leaf wetness
- Late-planted soybeans

## IMPORTANT FACTS

- Yield loss is rare in Minnesota and North Dakota
- Usually occurs late in growing season
- The pathogen also may infect dry edible beans and field peas
- Commonly confused with downy mildew



# Septoria brown spot

*Septoria glycines* (fungus)



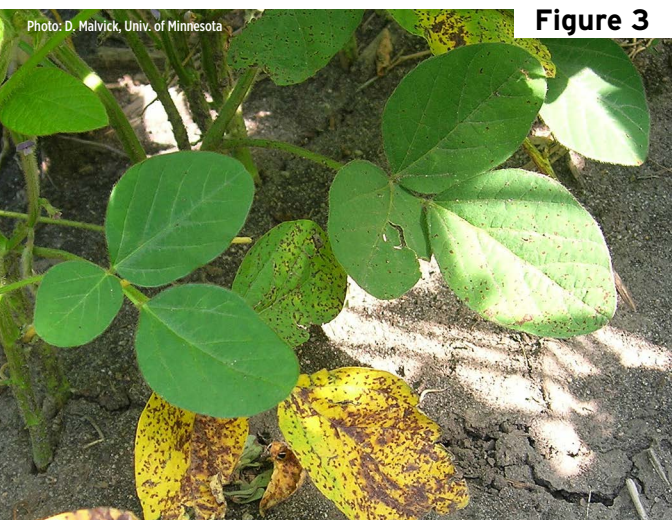
**Figure 1**

Photo: D. Malvick, Univ. of Minnesota



**Figure 2**

Photo: D. Malvick, Univ. of Minnesota



**Figure 3**

Photo: D. Malvick, Univ. of Minnesota



# Septoria brown spot

*Septoria glycines* (fungus)

**AUTHORS:** Dean Malvick and Sam Markell

## SYMPTOMS

- Dark brown spots (less than 1/8 inch diameter)
- Brown spots coalesce into large brown areas
- Irregular brown and yellow patches on one side of leaf
- Symptoms first develop in lower part of plant, then move up

**FIGURE 1** - Brown spots and chlorosis

**FIGURE 2** - Trifoliolate with brown spots and chlorosis

**FIGURE 3** - Common pattern of symptoms developing in lower canopy

## FACTORS FAVORING DEVELOPMENT

- Wet and warm weather
- High plant density
- Continuous soybean planting
- Minimum tillage

## IMPORTANT FACTS

- Typically does not cause yield loss
- Under severe conditions, defoliation and yield loss can occur
- Pathogen survives on infected residue and may be transmitted by seed
- Soybean varieties may vary in susceptibility
- Management options: crop rotation and fungicides
- Commonly confused with bacterial blight



# Soybean mosaic virus

Photo: A. Tenuta, OMAFRA, Ontario, Canada

**Figure 1**

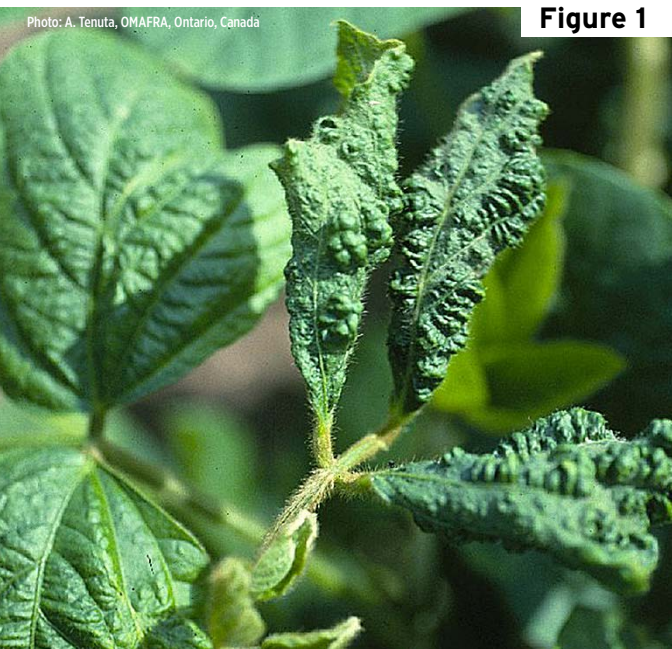
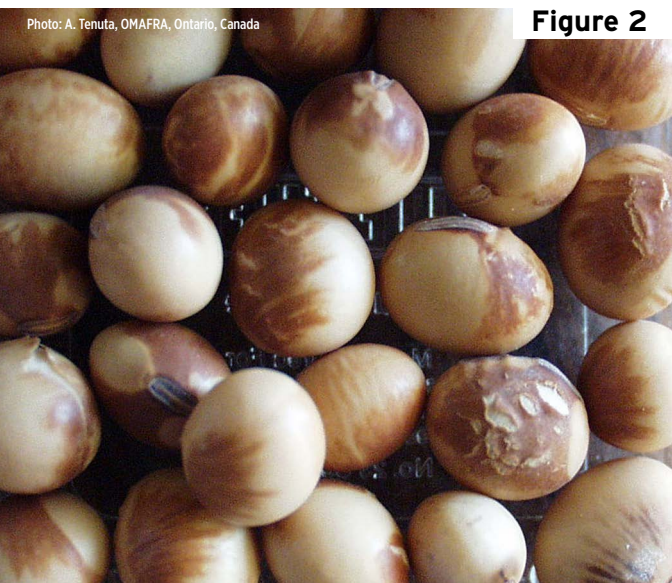


Photo: A. Tenuta, OMAFRA, Ontario, Canada

**Figure 2**





# Soybean mosaic virus

**AUTHORS:** Sam Markell and Dean Malvick

## SYMPTOMS

- Light and dark green mottling of leaves
- Leaf puckering and downward curling
- Symptoms most severe on youngest leaves
- Flattening of pods, reduced seed size, seed discoloration and stunting may occur
- Infected plants can be asymptomatic

**FIGURE 1** - Leaf mottling and curling

**FIGURE 2** - Discolored seed

## FACTORS FAVORING DEVELOPMENT

- Planting infected seed
- Aphid infestation

## IMPORTANT FACTS

- Not thought to be common in Minnesota or North Dakota
- Virus is seedborne and aphid-vectored
- Commonly confused with herbicide injury and bean pod mottle virus





# Soybean rust

*Phakopsora pachyrhizi* (fungus)

Photo: S. Markell, NDSU



**Figure 1**

Photo: S. Markell, NDSU



**Figure 2**

Photo: D. Malvick, Univ. of Minnesota



**Figure 3**



# Soybean rust

*Phakopsora pachyrhizi* (fungus)

**AUTHORS:** Sam Markell and Dean Malvick

## SYMPTOMS

- Very small gray-green, tan and/or red-brown spots on leaves
- Very small pustules on underside of leaf (hand lens needed)
- Leaf chlorosis and defoliation may occur

**FIGURE 1** - Pustules visible on leaf wrapped around finger (approximately 5 to 10X)

**FIGURE 2** - Profuse sporulation and leaf chlorosis

**FIGURE 3** - Magnified pustules

## FACTORS FAVORING DEVELOPMENT

- Proximity to areas that do not freeze (southern Florida, Louisiana, Texas)
- Storms traveling from south to north that may bring spores showers (for example, hurricanes)
- Prolonged leaf wetness and moderate temperatures

## IMPORTANT FACTS

- *Soybean rust has never been recorded in Minnesota or North Dakota*
- Dry edible beans may be a host
- Can cause significant yield loss
- Commonly confused with bacterial pustule and other foliar diseases.