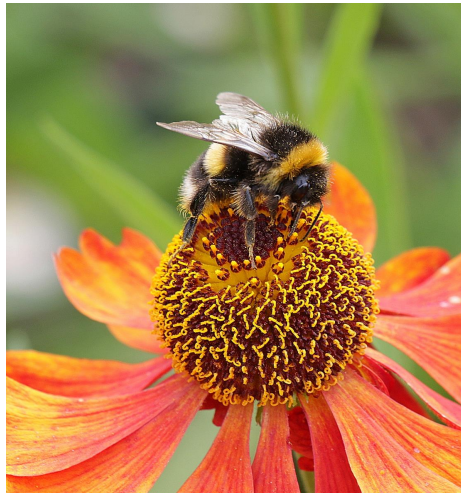


Building a NDSU Certified Home Pollinator Garden or Bee Lawn

April Johnson, NDSU Extension Pollinator Technician

NDSU | EXTENSION



Why should we care about pollinator habitat?

Pollinators play a crucial role in maintaining healthy ecosystems and food security.



Our Initiatives

- Certified pollinator gardens
- Bee Lawn initiative



What is a Pollinator Garden?

- Habitat for pollinators
- Contains nectar and pollen foraging sources, water, and shelter





Benefits of Pollinator Gardens

- Pollination
- Biodiversity
- Food Production
- Ecosystem Services
- Conservation
- Beautify landscapes

Factors to Consider Before Starting

- Eligibility for certification
- Water source availability



Designing Your Pollinator Garden: Requirements for Certification



Garden size



Location (urban, rural, public, private)



Plant selection



Water source



Pesticide Use



Plant Selection

Choose plants with staggered bloom times so nectar and pollen is available spring-fall.

Need two selections for **each bloom period:**

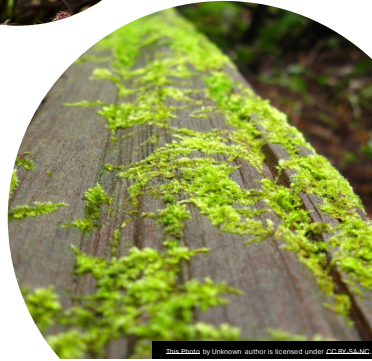
- April/May
- June
- July/Aug
- Sept/Oct



Shelter & Nesting Sites

Why is shelter important?

- Protection from weather
- Nesting sites for raising young
- Overwintering habitat
- Roosting and resting
- Protection from predators



Options

A minimum of one place for pollinators to nest over winter is required for certification.

- Bee house
- Butterfly house
- Provide bare ground that is not plowed
- Don't cut down perennials in fall
- Dead wood

Water

• A minimum of one water source is required for certification.

- Birdbath
- Butterfly puddling area
- Fountain
- Nearby pond, lake, or stream
- Water garden
- Cup plant, Silphium perfoliatum



Pesticides in the Pollinator Garden

ALL of the following pesticide practices are required to be certified:

- Reduce spraying
- Use the least toxic pesticide
- Do not spray blooming plants
- Spray only late in the evening
- Always follow pesticide labels
- Identify the pest before taking action



Resources



Follow NDSU Extension Pollinator Conservation on Facebook



View our online conservation and gardening resources



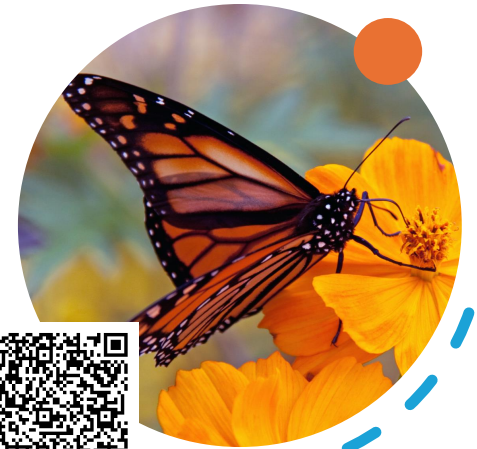
Take a virtual tour of home pollinator gardens



Key Points:

- Pollinator gardens make a difference
- Two species for each bloom period
- Water source
- Pesticide mitigation

Apply for certification—get a free sign!



This image by Unknown author is licensed under CC-BY-SA

Questions & Discussion



Ask away!



Questions / Contact Me

April Johnson,
NDSU Extension Pollinator Technician

april.johnson.1@ndsu.edu