



March 24, 2025

Dear 4-H Families:

Spring is here (sort of), and what comes after spring? Fair season! Time seems to fly by at this time of the year, and 4-H spring events and county fair will be here before you know it!

We hope that everyone makes an effort to complete the 4-H year. As a reminder, all 4-H members, including Cloverbuds, will:

- Attend at least 6 club meetings
- Participate in at least one County event before the County Fair (Cloverbuds will recite the 4-H pledge at one of the county events)
- Give at least one club demonstration (optional for Cloverbuds)
- Pay your club and county dues
- Enroll online at: <https://v2.4honline.com/>
- Exhibit at the Renville County Fair

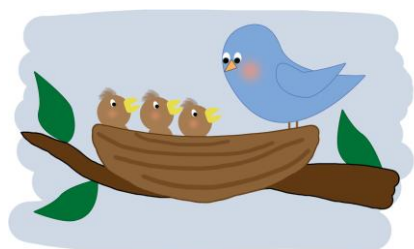
All of these must be met in order for a 4-H member or Cloverbud to participate in the Premium Sale at the Renville County Fair. Chat with your club leaders or myself if you think you will not be able to complete these requirements.

There are fact sheets online for each of these county events (look for the QR codes farther into this newsletter) and your leaders may also have copies of these sheets. You can also ask for them through my office. If you have questions as a leader, parent or 4-H'er please feel free to contact either Betsy or myself and we will do our best to help answer your questions. Even if you've been in 4-H for years there's always things that change or bring up new questions, so please reach out!

There gets to be quite a bit of paperwork involved with 4-H projects and exhibiting at the county fair. Again – feel free to ask questions. We are always happy to hear from you!

Sincerely,

Bethany Gates
Extension Agent—Renville County





2025 CALENDAR OF EVENTS



MARCH

- 1 Market Beef animals must be owned /managed by the 4-H'er

APRIL

- 12 4-H Horse Clinic at Quarter Circle S arena
15 Deadline for Registration for Consumer Choices, Communication Arts & Showcase
15 Mid-Year Enrollments Due/Livestock Exhibit numbers to leaders
27 4-H Showcase at the Mohall Community Center, 3-4:30 p.m.
27 YQCA Training at the Mohall Community Center, 5:00-6:00 p.m.

MAY

- 1 Beef breeding animals, dairy, swine, sheep, goats, and small animals (rabbits, poultry, & pets) must be owned/ managed by the 4-H'er
7 Communications Arts Contest, MLS School Library in Mohall at 5 p.m.
14 Consumer Decision Making, Mohall Community Center at 6 p.m.
24 Possession and Ownership of Poultry (minimum 30 days prior to show)
28 District Communication Arts Contest in Minot

JUNE

- 4-5 Medora Awards Trip
6 County Fair Registration Deadline
13 Horse Show—9 a.m. at Quarter Circle S arena
18 Fairgrounds Cleanup, 10:00 am
23 Static Exhibit Entry Judging Day for County Fair
24 & 25 Renville County Fair
29-July 2 2025 Extension Youth Conference at 4-H Camp in Washburn

JULY

- 18-26 North Dakota State Fair in Minot

CLUB AND PROJECT ENROLLMENTS

Once again this year, we are using 4-H Online (<https://v2.4honline.com/>) for both club enrollment and choosing project areas. Most importantly, you should have enrolled online earlier this year in order to participate in the fair. If you are enrolled, you can use 4-H Online to edit projects that you entered earlier as well as adding or dropping projects that you plan to exhibit at the fair. Please have all of this done by **April 15th** so that we can use that information in our planning.

You will also need to enter your animals with all their information in 4-H Online by **May 1**. These entries will transfer over to Fair Entry



when it is time to register your exhibits, so you are still only entering the information once. This is especially helpful in getting all the required information for each animal entered by the person who knows it best—you! Entering an animal in 4-H Online does not automatically enter it into our fair, it just gives you the option to select it when it comes time to register closer to the event. If you haven't decided which family member is bringing each animal, know that as long as they are under the same family any member of the family can choose them when registering exhibits through Fair Entry later.

If you have questions about 4-H Online, let Betsy know and she will help you with any issues.

PROJECT AREAS VS EXHIBITS

As we are starting to get ready for the Renville County Fair, it's always helpful to review the differences between a 4-H project and a 4-H exhibit.

4-H Project Areas are broad topics that you can work on and learn about throughout the year. You can choose these thru 4-H Online when you enroll or add them later.

→Ex: Animal Science, Sewing & Textiles, Foods & Nutrition, Industrial Technology

4-H Exhibits are things that you make or do to share what you have learned in your project area. Exhibits

are what you bring to the fair to have judged, and are registered thru Fair Entry. We follow the exhibit divisions and classes used at the North Dakota State Fair, with a few additions at the county level.

→Ex: Display about sheep health issues, a quilt or item of clothing that you have sewn, homemade bread or a poster about sugar content in beverages, welding or a small engine rebuild.

If you have any questions about projects vs exhibits, chat with your club leaders or get in touch with our office.

STATE FAIR BOOKS

I have not received the State Fair books yet, but they should become available in the next month or two. The 2024 book is still available online or in our office if you would like to look at them.

As soon as I receive a supply I will get them out to your club leaders. If you are new and do not have a state fair book from last year, you may want to ask your leader if they have an extra one that you can look at to see what type of requirements there are for exhibits at the state fair (I will also have extras in the Extension Office).

The Renville County Fair will follow the same exhibiting requirements that are listed in the state fair book. We do have a couple of exceptions:

- Cloverbuds can exhibit at the county fair, but not the ND State Fair. (See Cloverbud Exhibit List).
- We will have a small pet show if there are participants, but there is not a pet show at the NDSF.
- We have one "Other Craft" category if you have an exhibit that does not fit into the state fair categories.
- We have a Baby Beef (also other animals if needed). If exhibitors are 8 years old, but do not feel comfortable showing by themselves they can have someone else in the show ring with them to help them show. They are not eligible to go on to state fair.

COUNTY DUES

County dues should be paid by April 15th. The county dues are \$10 per youth or \$20 maximum per family (no charge for leaders). These should be paid to your club, which will pay the county. Please make sure these are turned in to the Extension Office by April 15th.

SPRING PAPERWORK—

Mid April

- Let your leaders know what animals you plan to bring to the fair. This is tentative and you can still make changes if necessary. Getting these numbers early allows us to start planning for fair set-up. Please fill out the estimated numbers sheet at the end of this newsletter and get the information to your club leaders.
- Sign up for a county contest. Everyone must participate in at least one. Registration is due by **April 15th** to allow us to plan for spaces and judges. If you change your mind about an event, please let us know ASAP.
- Update or add any projects that you are signed up for on 4-H Online.
- Enter any animals that you might bring to the fair in 4-H Online. Contact the Extension Office if you need any help with the process.

June 6

- Renville County fair registration is due for both livestock and static exhibits. This is not the same as updating your projects in 4-H Online (during April) or your tentative livestock/pen numbers. You will be able to register online through Fair Entry using your 4-H Online login. More information will be sent out later in the spring along with the state fair books.

COUNTY CONTEST INFORMATION

→ Dress codes are enforced unless otherwise noted

→ No live animals for any of the events

→ Any projects involving firearms or other weapons **MUST** be cleared by Bethany a week before the event

→ You may enter in as many events as you like, one county event is mandatory.

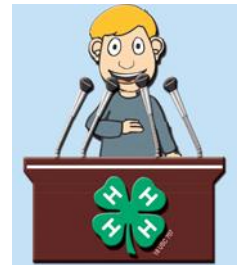
→ If you choose to only enter in the last event of the season, and are unable to attend (sick or busy) you will not complete the 4-H year. Please contact me if you know ahead of time or the day of the event.

→ More details are available on these contests at the 4-H website <https://www.ag.ndsu.edu/4H> under the Contests page or by following the QR codes below

--> All 4 of these contests have state competitions during the State Fair. More information can be found in the "Living Exhibits" section of the State Fair book. If you are interested, please let Bethany know.

CLOVERBUDS RECITATION

Cloverbuds are asked to participate in reciting either the 4-H Club Pledge or the Pledge of Allegiance at one of the County Events. They do not need to pre-register, and the recitation will be at the beginning of the event.



They are not critiqued and they have the option of doing their recitations as a group and/or by themselves.

This is a great way for Cloverbuds to get experience speaking in front of people and to see what the contests are about.

COMMUNICATION ARTS

The Renville County Communication Arts Contest is scheduled for 5:00 p.m. **Wednesday, May 7th** at the MLS School library. The contest will begin at 5 p.m. and should be completed by 7 p.m. We know that some church activities may still be going on, so please be in touch with the Extension Office if you need to be scheduled either at the beginning or the end of the contest to work with other commitments.

The Dress Code should be followed unless costumes are specifically mentioned in the guidelines for a category. 4-H'ers will be limited to two events in the Communication Arts event. Youth are encouraged not to use presentations that have been used previously in judged competitions. Please register on the attached sheet by **April 15th**.

If you are interested in competing in the state Communication Arts contest during the North Dakota State Fair, you must compete at our district contest, which is being held in **Ward** county this year. We hope that we can get a good group of entries from our clubs!

To learn more about the Communications Arts contest, you can find descriptions of each category at the North Dakota 4-H Contests website or by getting in touch with the Extension Office.



4-H SHOWCASE

The 4-H Showcase consists of Clothing Revue and Project Expo. It is scheduled for **Sunday, April 27th** at the Community Center in Mohall. Set up will be from 2:30 – 3 p.m., with judging from 3-4:30 p.m. Feel free to invite friends and family to discover all of the great projects that 4-H members are working on!

The **Project Expo** is a table top display of the project of your choice. A tabletop display is a neatly decorated table with examples of your finished product, and either examples or a description of what you



did to complete this project. The judge will look at your display and ask you questions about your project. Please fill out the attached registration sheet by **April 15th**.

The **Clothing Revue** is open to anyone currently involved in a sewing project or Clothing Decisions project. If you plan to participate in the Clothing Revue, there is a brief narrative for you to fill out for your project. Again we would like to stress **pre-registration by April 15th**.



If you would like more information you can check online, or feel free to contact me for more details. Also keep in mind that the state Project Expo and Clothing Revue contests during the State Fair are now open to an unlimited number of exhibitors, but you must participate at the county level before competing at state.

CONSUMER DECISION MAKING

Consumer Decision Making is set for **Wednesday, May 14th** at 6:00 p.m. at the Mohall Community Center.

Consumer Decision Making involves reading a situation and deciding which of the four items in a class the best for that given situation is and ranking them 1st - 4th place. In one of the classes you are required to explain why you placed them the way you did.

If you plan to participate in this, please register on the attached sheet by **April 15th**. After I know who is participating, I will schedule a couple workouts (practice sessions). They also have some great information and training sessions at their website.



DRESS CODE

→4-H Dress Code for spring county contests and county fair has been expanded to include shirts that are white, light heather gray, or 4-H/kelly green with a 4-H patch or small 4-H clover. Certain events during the fair may have more specific requirements (horse show, small animals).



→The cost of the 4-H patches is \$2 each. We will continue to have patches to purchase at any event that requires 4-H dress code.

MEDORA PRE-TEEN AWARDS TRIP

Each year the winners of the 4 Spring Contests in the Preteen (4-H ages 11 & 12) age group get the opportunity to go on an overnight trip **June 4-5** to Medora with 4-H members from McHenry, McKenzie, and Williams counties.

Winners will receive more information as they are chosen, but feel free to reach out to Bethany with any questions before then.

CLOVERBUDS EXHIBIT LIST -

We have a Cloverbud category at the Renville County Fair, but they are not eligible to exhibit at the state fair.

Cloverbud members may enter a **total** of 10 exhibits. There is no limit on how many items they may exhibit in any one lot as long as the total number of projects does not exceed 10.

Static Exhibits:

- | | |
|------------------------------|---------------------------|
| -A plant | -Seed Collection, Mounted |
| -Insect Collection | -Leaf Collection |
| -Bird Feeder | -Crystal Garden |
| -First Aid Kit | -Snack Mix |
| -Protein balls | -Simple Food |
| -Needlepoint | -Garden Exhibit |
| -Drawing or painting | -Ceramics |
| -Glue Solution | -Leathercraft |
| -Reduce, Reuse, Recycle Item | |
| -Nature prints or textures | |

- Poster-Educational - related to a Cloverbud project
- Other item made as part of a Cloverbud project

Cloverbud Animals: Baby Beef, Goat, Horse, Pets, Poultry, Rabbits, Sheep, & Swine

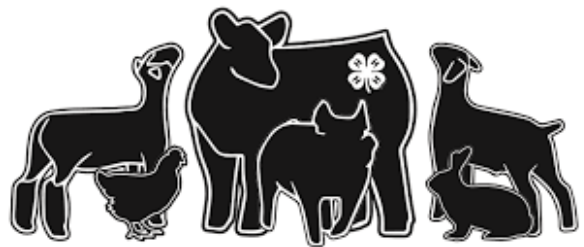
LIVESTOCK OWNERSHIP DEADLINES

There are a couple deadlines for livestock ownership in the state fair book that will be enforced on the county level. You need to have ownership of the animal itself or, in the case of smaller animals, it can be the progeny of an animal that you own.

- **March 1** - Market Beef animals must be owned /managed by the 4-H'er
- **May 1** - Beef breeding animals, dairy, swine, sheep, goats, and small animals (rabbits, & pets) must be owned/ managed by the 4-H'er
- **May 24**– Poultry

If it is not possible for you to own the animal and keep it at your home/farm, a lease agreement can drawn up to allow the 4-H member to show the animal owned by someone else. However, the 4-H member **MUST** still be in charge of daily management and training of the animal.

If you are planning to lease an animal, please visit with the Extension Office before May 1.



Get in Touch with Us!

Bethany Gates: Bethany.Gates@ndsu.edu

Betsy Myaer: Betsy.Myaer@ndsu.edu

Renville County Extension Office: 701-756-6392



Renville County 4-H – North Dakota



YQCA certification is required for any 4-H'ers showing livestock at the Renville County Fair in 2025, including Cloverbuds. YQCA includes basic animal care information for youth showing:

- Swine
- Beef cattle
- Dairy cattle
- Sheep
- Goats
- Market rabbits
- Poultry
- Pets (Renville County has added this)

YQCA is available as an online program for youth everywhere in the U.S. YQCA instructor-led trainings (ILT) are also available in ND. We have one in-person training in Renville County scheduled for the spring of 2025:

→ **April 27** from 5:30-6:30 p.m. at the Mohall Community Center after the 4-H Showcase.

A parent must attend the training with their 4-H member(s) and Cloverbuds! Only the youth showing the animals need to register online, but we want to make sure that everyone is on the same page as far as animal care and requirements for the fair.

YQCA registration can be found at yqcaprogram.org

You will need to register online and pay for the training (\$3) before attending. Please let us know if you have questions.

An online training (\$12) is also available if it works better for you, but please make sure to **send your certification number to the Extension Office** so that we can have them on file. If you do not send us your certification number, we have no way of seeing that you have taken the online training.



POULTRY

As of March when this newsletter is going out, we are planning to hold our Poultry Show as a part of the Renville County Fair. However, since HPAI can often be carried by migrating birds, things could change if cases in North Dakota go up in the spring.

If the Board of Animal Health or state 4-H office come out with any restrictions for shows we will let you know as soon as we have information. Feel free to get in touch with me if you have any questions or concerns.

NORTH DAKOTA 4-H CAMP

Be sure to check out North Dakota 4-H Camp opportunities at the 4-H Camp in Washburn and other locations around the state. You do not need to be a 4-H member to go to camp, so bring a friend! Information and registration for camps can be found at: <https://ndsu.ag/4hcamp>

The Renville County 4-H Leader's Council does offer scholarships to help 4-H members pay for camp, so check with your leaders or our office about an application. There are also scholarships available through North Dakota 4-H, which can be found on the website above.



LIVESTOCK EXHIBITORS

For the last few years, we have been tight on livestock space at our County Fair because of the number of 4-H'ers exhibiting livestock. To make sure there is space for everything you plan to bring, we are asking each club to give us an estimated number for each type of animal you will be showing.

Please help your club leaders out by getting them your numbers by **April 15**. This isn't a definite number that you are committed to, but should be your most accurate prediction of what you will show. Use the form below to get this information to your leaders.

Please let your leader know the following by **April 15**:

Our approximate numbers for livestock exhibit at the Renville County fair this year:

- If you have multiple animals of the same species, how many pens does your family need?
- This includes animals for both regular members and Cloverbuds
- Give us your “best guess” so that we can make the best plans to house our animals during the fair

Family Name: _____

Horses: _____

Cattle (adult): _____ Calves: _____

Sheep: _____; Pens _____

Swine: _____; Pens _____

Goats: _____; Pens _____

Dogs: _____

Rabbits: _____

Poultry (what type): _____

Pets (what type): _____



Ownership/management deadlines:

- **March 1** - Market Beef animals must be owned /managed by the 4-H'er
- **May 1** - Beef breeding animals, dairy, swine, sheep, goats, and small animals (rabbits, & pets) must be owned/ managed by the 4-H'er
- **May 24** - Poultry

You can get this information to us in whatever way is easiest for you— drop this paper off at the office, text a picture to Bethany or Betsy, email us with the information, or fill out this online registration form:

<https://forms.gle/u8xigJDmHFXyHgiY7> .

The important thing is that we get your information so that we can start planning our events. You can email them to Betsy at betsy.myraer@ndsu.edu . Thanks!



REGISTRATION FORM
COMMUNICATION ARTS

**Return to Renville County Extension Office
no later than Tuesday April 15, 2025**

Name _____

4-H Club _____

Age (as of September 1, 2024) _____ Years in 4-H _____

Division: Beginner (8-10 years old) _____ Pre-Teen (11-12) _____ Teen (13 & over) _____

Please check those you intend to participate in (limit of two)

- | | |
|---|--|
| <input type="checkbox"/> Demonstration | <input type="checkbox"/> Illustrated Talk |
| <input type="checkbox"/> Impromptu Speech | <input type="checkbox"/> Interpretive Reading |
| <input type="checkbox"/> Prepared Speech | <input type="checkbox"/> Dramatic Presentation |
| <input type="checkbox"/> Mass Media Presentation (Broadcasting, Commercial) | |
| <input type="checkbox"/> Electronic Presentation (video, software presentation, website design) | |
| <input type="checkbox"/> Fish Tank: Youth Entrepreneurship | |
| <input type="checkbox"/> Cloverbud recitation (not required to pre-register) | |

Is there any special equipment you would require?

- | | |
|--|--|
| <input type="checkbox"/> DVD player/TV | <input type="checkbox"/> VCR player/TV |
| <input type="checkbox"/> Laptop & projector* | <input type="checkbox"/> Table Space |

*Please make sure that you have your program on a flash drive or accessible via the internet.

Title of Demonstration or Presentation _____
(if you haven't decided on a title or topic when you turn in this form, please let us know the title sometime before the contest)

REGISTRATION FORM
4-H SHOWCASE

Return to Renville County Extension Office
no later than Tuesday April 15, 2025

Name _____

4-H Club _____

Age (as of September 1, 2024) _____ Years in 4-H _____

Division: Beginner (8-10 years old) _____ Pre-Teen (11-12) _____ Teen (13 & over) _____

- ____ Project Expo
- ____ Buy & Show Clothing Revue
- ____ Sew & Show Clothing Revue
- ____ Decorate Your Duds Clothing Revue
- ____ Cloverbud Recitation

TITLE OF DISPLAY _____

PROJECT REPRESENTED _____

REGISTRATION FORM
CONSUMER DECISION MAKING

Return to Renville County Extension Office
no later than Tuesday April 15, 2025

Name _____

4-H Club _____

Age (as of September 1, 2024) _____ Years in 4-H _____

Division: Beginner (8-10 years old) _____ Pre-Teen (11-12) _____ Teen (13 & over) _____