



**Grant County Fair  
&  
4-H Achievement Days  
August 14, 15, 16, 17, 2025  
Carson, ND**



## The Little Boy

Anonymous

Once a little boy went to school. He was quite a little boy, and it was quite a big school. But when the little boy found that he could go to his room by walking right in from the door outside, he was happy. And the school did not seem quite so big anymore.

One morning, when the little boy had been in school awhile, the teacher said, "Today we are going to make a picture." "Good," thought the little boy. He liked to make pictures. He could make all kinds, lions and tigers, chickens and cows, trains and boats, and he took out his box of crayons and began to draw.

But the teacher said, "Wait, it is not time to begin." And she waited until everyone looked ready.

"Now," said the teacher, "We are going to make flowers." "Good!" thought the little boy. He liked to make flowers and he began to make beautiful ones with his pink and orange and blue crayons.

But the teacher said, "Wait. And I will show you how." And she drew a flower on the blackboard. It was red, with a green stem. "There," said the teacher. "Now you may begin."

The little boy looked at the teacher's flower. Then he looked at his own flower. He liked his own flower better than the teachers, but he did not say this.

He just turned his paper over and made a flower like the teacher's. It was red, with a green stem.

On another day when the little boy had opened the door from the outside all by himself, the teacher said, "Today we are going to make something with clay." "Good!" thought the little boy. He liked clay. He could make all kinds of things with clay: snakes and snowmen, elephants and mice, cars and trucks – he began to pull and pinch his ball of clay.

But the teacher said, "Wait. it is not time to begin." And she waited until everyone looked ready.

"Now," said the teacher. "We are going to make a dish." "Good!" thought the little boy, he liked to make dishes, and he began to make some they were all shapes and sizes.

But the teacher said, "Wait. And I will show you how." And she showed everyone how to make one deep dish. "There," said the teacher. "Now you may begin."

The little boy looked at the teacher's dish. Then he looked at his own. He liked his dishes better than the teacher's. But he did not say this.

He just rolled his clay into a big ball again. And made a dish like the teacher. It was a deep dish.

And pretty soon the little boy learned to wait, and to watch, and to make things just like the teacher. And pretty soon he didn't make things of his own anymore.

Then it happened that the little boy and his family moved to another city. And the little boy had to go to another school.

This school was even bigger than the other one. And there was no door from the outside into his room. He had to go up some steps and walk down a long hall to get to his room. And the very first day he was there, the teacher said. "Today, we are going to make a picture."

"Good!" thought the little boy, and he waited for the teacher to tell him what to do, but the teacher didn't say anything she just walked around the room.

When she came to the little boy, she said, "Don't you want to make a picture?" "Yes." said the little boy. "What are we going to make?" "I don't know until you make it." said the teacher. "How shall I make it?" said the little boy. "Why, any way you like," said the teacher. "And any color?" asked the little boy. "Any color," said the teacher. "If everyone makes the same picture and uses the same color, how would I know who made what and which was which?"

"I don't know," said the little boy. And he began to make a flower. It was red, with a green stem.



July 2025

Dear 4-H Members, Leaders, and Parents:

Get Ready! The Grant County Fair & 4-H Achievement Days will be held August 14-17, 2025.

Enclosed is the 4-H Fair booklet for 2025 which includes all rules pertaining to qualifications for exhibits. Please read the rules and deadlines carefully. There is one Fair booklet per family.

A pre-registration sheet is also enclosed and is due July 31<sup>th</sup>. Parents must sign a statement which gives members permission to sell their market animals. All sales are final.

The Grant County Fair & 4-H Achievement Days is a great opportunity to share your 4-H work with the public.

Sincerely,

Tessa Osterbauer, Extension Agent/Agriculture & Natural Resources

Amanda Dahners, Extension Agent/Family and Community Wellness

Donna VandenBurg, Administrative Assistant

## **Livestock**

**No animals will be allowed in the barns on the Wednesday before the Fair.**

### **Entry – Thursday, August 14, 8 am – 11 am MT**

- ✓ The bill of sale (brand release) must be filled out and with you at the time of weigh-in or you will not be allowed to unload your animal and will be sent to the end of the line. Even if there is no brand the bill of sale (brand release) must be filled out.
- ✓ Please refer to how to fill out a bill of sale correctly on page 3.
- ✓ Group picture will be taken at Noon pm MT in the Show Ring. Meeting for showman after group pictures.

### **Livestock Show - Friday, August 15, 8:30 am MT**

- ✓ Numbers and t-shirts will be distributed at weigh-in. 4-H and FFA members are required to wear their number and t-shirt during the livestock judging.
- ✓ Be on time and dress neat and clean!
- ✓ All breeding animals can go home after judging on Friday except champion and reserve champion.

### **Livestock Sale - Saturday, August 16, 1:30 pm MT**

- ✓ Be sure to contact livestock buyers to encourage their support.
- ✓ 4-H and FFA members are required to wear their T-shirt during the sale.
- ✓ A 5% commission will be taken out of all market animals sold. This does not apply to the resale of the animal. The commission will go toward fairgrounds improvements.
- ✓ All bidders who will be bidding on 4-H & FFA Livestock animals will be required to pick up a number and fill out a bidder sheet prior to the sale. If you cannot be present at the sale and are having someone else bid for you, please call the Grant County State Bank at 701-622-3491 to register who will be bidding for you and your billing information.

## **4-H (Poultry, Rabbits, Dogs, Cats, Pets) & Open Class (Poultry, Rabbits) Judging of Small Animals**

**Thursday, August 14 -**

**Entry & Registration at Small Animal Building – 4:30 pm MT**

**Judging will be held at the Small Animal Building – 5 pm MT**

- ✓ Entry & Registration at 4:30 pm MT and Judging at 5 pm MT.
- ✓ Judging will be done by division/class and if you are not there when your division/class is being judged it will not be reopened.
- ✓ Wear your t-shirt over a long-sleeved shirt when showing rabbits and poultry.
- ✓ Exhibits can only be dropped, not added, the day of the show.
- ✓ Please refer to the North Dakota 4-H Livestock Showmanship Guide on Fitting and Showing Rabbits on pages 34-43 and for Poultry pages 27-33 and the Grant County Dog 4-H Program handout.

## Horse Show

Thursday, August 14 – 1 pm MT - Rodeo Grounds – Carson

- ✓ Patterns for this event are listed in the North Dakota 4-H Horse Show and Judging Guide.
- ✓ For all pattern classes, patterns should be posted a minimum of one hour prior to the start of the show.
- ✓ First Place in Junior and Senior Halter Showmanship Class will need to be present on Friday to participate in the Round-Robin Showmanship Contest.
- ✓ You can use the rodeo ground back pens to house your horse, you must have your horse removed by Friday at 9 am MT. You are responsible to clean up your area or you will be fined \$75.
- ✓ You can check-in and receive your contestant number during entry Thursday morning, 8 am – 11 am MT at the Fairbuilding.

## Static Exhibits - Thursday, August 14 – Fair Building

- ✓ Group pictures will be taken at Noon pm MT in the show ring.
- ✓ Be sure you are enrolled in the project in which you plan to exhibit.
- ✓ It is suggested to protect your exhibits, display in plastic bags.
- ✓ Please refer to the How-to Section in this booklet for filling out an exhibit tag (page 82), making a grain sheaf (pages 33-34), cleaning a grain sample (page 35) preparing your vegetables for exhibit (pages 39-47), guidelines for posters (page 22) and exhibiting your pictures (handout).
- ✓ **Pick up your check-out sheet at the registration table before getting your exhibits judged. This sheet will be presented to the judge with your exhibits. Make sure the judge records the ribbon placing. When the form is completed, return it to the registration table. Please do not take the check-out sheet home, if you do NO PREMIUM WILL BE PAID.**
- ✓ Exhibitors will be able to sell their static exhibits, if they want, through a silent auction. **No display boards or food items will be sold at the silent auction.** The exhibitor will receive a silent auction sheet at check-in on Thursday. After judging the exhibitor will put their exhibit with the silent auction sheet on a table that will be designated for the silent auction. The Silent Auction will start on Thursday at 2 pm MT – Saturday at 1 pm MT. Items will be picked up on Saturday at 2:30 pm MT. Checks will be mailed to the exhibitors.

## Static Exhibits Check-out - Saturday, August 16

- ✓ All exhibits must remain on display until 2:30 pm MT on Saturday, August 16.
- ✓ 4-H'ers receiving awards will report to the Fair Building from 2:30 pm – 3:30 pm MT, Saturday, August 16.
- ✓ **Exhibit check-out from 2:30 pm – 3:30 pm MT on Saturday, August 16. If projects are taken out of the building before 2:30 pm MT, or you do not go through the check-out line on Saturday, no premiums will be paid. Any projects left after 4:00 p.m. will cause forfeiture of your 4-H premiums.**

### **Clean Up - Saturday, August 16**

- ✓ All exhibitors are required to clean out their pen(s) and pile the straw & woodchips in the middle of the building or designated area.
- ✓ If your pen(s) is not clean a \$75.00 fine per pen will be assessed to you as a clean-up fee.
- ✓ The trash on entire fairgrounds must be picked up before leaving.
- ✓ Clean up in the Fairbuilding will start at 3:30 pm MT.

### **Miscellaneous**

- ✓ All youth 8 years of age by September 1, 2024 are eligible to participate fully in all district and state 4-H activities and events.
- ✓ Your 4-H leader will be visiting with you as to what projects you have completed and what you have done in that project. Your 4-H leader will be responsible for checking the completion form to show which projects were completed and getting the form back to the Extension office before Wednesday, August 13.
- ✓ 4-H members must attend six (6) business meetings in which reports have been sent to the county office to qualify for exhibiting at the fair.
- ✓ College students or high school graduates who have not yet turned 18 by September 1st, can be a 4-H member and receive credit by attending six (6) meetings or 4-H activities for the year. These meetings or activities should be reported to your leader so you can receive credit.

#### A 4-Her of Character

1. TRUSTWORTHINESS - includes honesty, promise-keeping and loyalty.
2. RESPECT - includes courtesy and proper treatment of people and things.
3. RESPONSIBILITY - includes the pursuit of excellence, accountability, and perseverance.
4. FAIRNESS - involves consistently applying rules and standards appropriately for different age groups and ability levels.
5. CARING - promoting the well-being of people and things in a person's world. It promotes action and not just feelings.
6. CITIZENSHIP - includes making the home, community, and country a better place to live for themselves and others.

*Ribbons and awards will fade,  
but things you learn last a lifetime.*

---

Letter	Page
Fair Schedule	
The Judging Process	
Fairboard & 4-H Leaders	
Awards & Sponsors	
Quality Counts	
Care of Animals	1-3
Example of Bill of Sale (Brand release)	3
<b>Animal Exhibits Project Area</b>	
Rules	4-8
Division 1      Horsemanship	9-10
Division 2      Swine	11
Division 3      Sheep	11
Division 4      Goats	12
Division 5      Beef	13
Division 6      Dairy	13
<b>Small Animals</b>	
Rules	14-15
Division 7      Pets	15
Division 8      Cat	16
Division 9      Dog	16
Hints for Showing a Cat	17
Hints for Showing a Dog	18
Division10      Rabbits	19
Division11      Poultry	20-21
<b>Guidelines for Posters</b>	22
<b>Animal Science Project Area</b>	
Rule	23
Division 12      Animal & Meat Evaluation	24
Division 13      Static Exhibits for Animal Science	24
Division 14      Static Exhibits for Small Animals	25
Division 15      Veterinary Science	25
<b>Environmental Education Project Area</b>	
Rules	26
Division 16      Energy Project	27
Division 17      Entomology/Bee Project	27
Division 18      Environmental Stewardship Project	27
Composting, Recycling	
Division 19      Forests, Rangeland and Wildlife Project	28
Forestry, Range Science, Wildlife & Fisheries	
Division 20      Outdoor Education/Recreation Project	29
Adventure/Challenge, Hunting & Sportfishing, Shooting Sports	
<b>Plant Science Project Area</b>	
Rules	30
Division 21      Agronomy	31-32
Crop Production, Pest Management, Soils & Soil Conservation, Weeds	
Preparing Crop Sheaves for Exhibit	33-34
Cleaning Grain Sample	35
Division 22      Botany Project	36
Division 23      Horticulture	36-38
Flower Gardening/Indoor Plants, Gardening, Fruits	
Harvesting & Preparing Vegetables for Exhibit	39-46
<b>STEM: Science, Technology, Engineering, Math Project Area</b>	
Rules	47
Division 24      Digital Technology Project	48
Computer & Digital Technology, GPS/GIS, Robotics	
Division 25      Engineering Project	49
Aerospace Engineering, Chemical Engineering, Civil	
Engineering, Electrical Engineering, Mechanical Engineering	
Division 26      General Sciences and Math Project	50
Earth, Science, Life Science, Mathematics,	
Physical Science	
Division 27      Industrial Technology Project	51
Bicycle, Electricity, Engines/Tractors/Field Equipment,	
Welding, Woodworking	

<b>Personal Development and Leadership Project Area</b>		
Rules		52
Division 28	Careers Exploration & Workforce Preparation Project	53
Division 29	Economics/Business/Marketing Project	53
Division 30	Leadership	53
Division 31	Personal Development Project	53
<b>Cloverbuds</b>		
Rule		54
Division 32	Cloverbuds	55
<b>Communication and Expressive Arts Project Area</b>		
Rules		56
Division 33	Communication Arts Project Speaking/Radio/TV, Writing/Print	57
Division 34	Performing Arts Project Dance/Movement, Drama/Theater/Clowning, Music/Sound	57-58
Division 35	Visual Art Project Arranging Flowers, Building Plastic Model from a Kit, Cake Decorating, Glue Solution, Jewelry Making, Leather Craft, Metal Arts, Pre-Packaged Craft Kit or Visual Arts (Arts & Crafts), Scrapbooking, Wood Arts, Drawing & Painting, Ceramics & Plasterware, Graphic Arts & Design, Photography	58-62
<b>Foods, Nutrition and Healthy Lifestyle Education Project Area</b>		
	Appropriate Food Exhibits for Fairs	63-64
Rules		65-66
Division 36	Baking & Cooking Project Baking, Cooking, Food & Kitchen Safety	66-67
Division 37	Food Preservation	68
Division 38	Food Science Project	69
Healthy Living Project Areas		
Division 39	Mental & Emotional Health	69
Division 40	Personal Safety Project	69
Division 41	Physical Health Project	69
Division 42	Understanding Physical & Intellectual Development Project	70
<b>Family &amp; Consumer Science Project Area</b>		
Rules		70-71
Division 43	Consumerism Education/ Money Management Project	71
Division 44	Child Development	71
Division 45	Home Environment Project	71
<b>Sewing &amp; Textiles Project Area</b>		
Rules		72
Division 46	Sewing and Textiles Projects	73-74
Division 47	Fiber Arts Crochet, Embroidery, Felting, Knitting, Latch Hooking, Macrame, Quilting	74-76
<b>Civic Engagement Project Area</b>		
Division 48	Civic Education (Local, State, National) Project	77
Division 49	Global & Cultural Education Project	77
Division 50	Volunteerism & Service-Learning Project	77
General		
	Club Displays	78
	Floats	78
	Fast Facts for You to be Successful during Interview Judging	79
	Absentee Interview Judging Form	80
	Fill Out an Exhibit Tag	81

**Welcome to  
Grant County Fair & 4-H Achievement Days  
August 14, 15, 16, 17, 2025  
Carson, ND  
All times are Mountain Time**

**Thursday, August 14<sup>th</sup>**

8 am – 11:30 am – **4-H Interview Judging Static Projects** – Fair Building

8 am – 11 am – **Weigh-in of 4-H & FFA Livestock** – Fairgrounds

11 am – 1 pm - **Enter Open Class and FFA Exhibits** - Fair Building

Noon – **4-H & FFA Group Picture – Show Ring – Fairbuilding**

Following the picture, a meeting with the Livestock Committee.

1 pm – **Grant County 4-H Horse Show** – Rodeogrounds

2 pm – 8 pm – **Silent Auction** - Fair Building

- Exhibitors will be able to sell their static exhibits, if they want, through a silent auction. **No display boards or food items will be sold at the silent auction.** The exhibitor will receive a silent auction sheet at check-in on Thursday. After judging the exhibitor will put their exhibit with the silent auction sheet on a table that will be designated for the silent auction. The Silent Auction will start on Thursday at 2 pm MT – Saturday at Noon MT. Items will be picked up on Saturday at 1 pm MT. Checks will be mailed to the exhibitors.

4:30 pm – 7 pm – **Hamburgers in the Park - Park**

4:30 pm – **Enter Small Animals - 4-H (Cats, Dogs, Pets, Rabbits & Poultry) Open Class (Rabbits & Poultry)** – Small Animal Building

5 pm – **4-H & Open Class Judging of Small Animals** – Small Animal Building - Fairgrounds

7:30 pm – 9:30 pm – **2<sup>nd</sup> Annual Cash Bingo – Hammer Down**

- Cash prizes. All proceeds going to Grant County Fair Association

**Friday, August 15<sup>th</sup>**

8 am - **Exhibit Building Open**

8 am – 8 pm – **Silent Auction** - Fairbuilding

8:30 am - **4-H & FFA Livestock Judging** – Show Ring - Fairgrounds

## **Friday, August 15<sup>th</sup>**

9 am – Noon – **Farmers' Market** – between the Small Animal Building & Fairbuilding – Fairgrounds

- Open to anyone wanting to sell their extra garden produce

Following the livestock judging – Free Ice Cream – between the Small Animal Building & Fairbuilding – Fairgrounds

- Sponsored by Double R Meats

1:30 pm – 3:30 pm – **Inflatables Games – Fairgrounds**

- There will be water games, so bring extra clothes

3 pm – **Ranch Rodeo – Rodeogrounds**

- Calcutta
- Beer Garden and Concessions
- Admission is Free
- For additional information call Cole Sandau at 701-471-5871

3:30 pm – **Chili Cook-off – Fairbuilding**

- Interested participants call Aricka Brenner at 701-391-6463
- Sponsored by: ND Cattlewomen District #6

6:30 pm – **Kids Turtle Races registration** – Show Ring - Fairgrounds

- Bring your turtle. No snapping turtles are allowed.
- Registration fee \$1.00
- Overall Winner will receive a cash prize for 1<sup>st</sup> Place; 2<sup>nd</sup> Place; 3<sup>rd</sup> Place; 4<sup>th</sup> Place.

7 pm – **Kids Turtle Races** – Show Ring – Fairgrounds

8 pm – **Fairbuilding closed for the evening**

8 pm – **3<sup>rd</sup> Annual Cornhole Tournament** – Hammer Down

- 100% payback      \$20.00 per team

9 pm – **3<sup>rd</sup> Season \$1000 Hot Ones Challenge** – Hammer Down

9 pm – **Street Dance – Main Street – The Seat**

- Music by: State Line Ramblers

## **Saturday, August 16<sup>th</sup>**

8:30 am – **Line Up for Parade & Judging** – North of the Courthouse on Morton St & 4<sup>th</sup> Ave

- Parade entry due August 11<sup>th</sup> to Donna VandenBurg, 315 Morton St., Carson, ND 58529.
- Information on the Parade call Donna at 622-3470 or 622-3386

9 am – **Line up for Kiddies Parade** – North of the Courthouse on Morton St. & 4<sup>th</sup> Ave

## **Saturday, August 16<sup>th</sup>**

9 am – 3 pm – **16<sup>th</sup> Annual Rods N Rock Car Show** – Railroad Ave

- Registration is from 9 am – 11 am.
- \$10.00 entry fee per vehicle. Burn Out Contest at Noon
- Awards at 2 pm MT. Cash prizes. Beer Garden and Concessions
- Hole in one contest
- For additional information call Dan Stewart at 701-622-3210.
- Sponsored by: Stewart Ranch

9 am – **Clam Diggers & Mimosas** – Hammer Down

9:30 am – **Parade** – Main Street

10 am – **Rodeo Slack** – Rodeogrounds

- Gate Admission: \$10.00 for Ages 13 and older; \$5.00 for Ages 12 and under; Free - Preschoolers

10:30 am – 1 pm – **Danny Hauge 6<sup>th</sup> Annual Memorial Tractor Trek**

- Line up at Prairie Pit Stop (end of main street)
- All tractors are welcome. No lawn mowers
- For additional information call Trenton Weekes at 701-226-3583

11 am – 1 pm - **4-H Pork Barbecue** - Fairbuilding

- Cost \$5.00
- Sponsored by: Grant County 4-H Council

11 am – 1 pm - **Pie and coffee** – Fairbuilding

- Sponsored by Carson Women's Club

11 am – 2 pm - **Art Classes with Miss Myra – Carson Park**

- Will do an Art project and a Mini Art Hunt

11 am – 4 pm – **Farmers Market** – between Small Animal Building & Fairbuilding - Fairgrounds

- Open to anyone wanting to sell their garden produce

11:30 am – **4<sup>th</sup> Annual Power Wheel Derby – north of the Fairbuilding**

- Registration is from 10:30 am – 11:30 am. No entry fees.
- For all ages Heats will be by age group, Heat 1 ages 3-6, Heat 2 ages 7-12, Heat ages 13 and up
- Trophies for 1<sup>st</sup>, 2<sup>nd</sup>, 3<sup>rd</sup> place for each heat
- Riders must provide their own helmets and Power Wheels.
- Free to enter. Power Wheels available to rent for \$10.00 (First come, First Serve)
- Will follow USA Power Wheel Derby Guidelines
- For more information call Merlin Leithold at 701-527-6544

1 pm – **Silent Auction Closed**

1 pm – 4 pm – **Historical Site Open**

1:30 pm - **4-H and FFA Livestock Sale** - Fairgrounds

### **Saturday, August 16<sup>th</sup> – continued**

2:30 pm – **Pick up and pay for Silent Auction Items** – Fairbuilding

2:30 pm – 3:30 pm - **Static Exhibits Check-Out** - Fair Building

4:30 pm – **Bruce Zingg Memorial Rodeo** - Rodeo Grounds

- Gate Admission: \$10.00 for Ages 13 and older; \$5.00 for Ages 12 and under; Free - Preschooler

8 pm – 1 am - **Street Events** – Main Street – Hammer Down

- With Live Music and other exciting entertainment

### **Sunday, August 17<sup>th</sup>**

8 am – 12:30 pm - **Pancake & Sausage Breakfast** - Fair Building

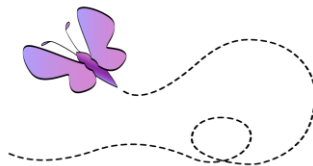
- Sponsored by: Grant County Fairboard

Noon – **Cowboy Church Service** – Rodeo grounds

1 pm – **Youth Rodeo** – Rodeogrounds

- **Mail entry forms to Mikah Schock** by August 1<sup>st</sup>. No late entries accepted. No Refunds. For an entry form call 701-426-2508 or 701-622-3470

*Butterfly in the Wind  
A child is a butterfly in the wind;  
some can fly higher than others.  
But each one flies the best that it can.  
Why compare one against the other?  
Each one is different.  
Each one is special.  
Each one is beautiful.*



# Using the Danish System to cultivate youth who THRIVE!

## Empower Youth to THRIVE!

“To Make the Best Better,” our well-known 4-H motto, implies that we need to know what our best is before we can make it better. Our motto asks how well we’re doing now and encourages us to consider how and where we can improve.

A 4-H project is not an end and does not illustrate all the learning that takes place before and after the project is complete: it displays a portion of what the 4-H member can do and shows what they have accomplished and created.

The TOTAL development of the 4-H member is the most important. Creating, sharing, exhibiting, and judging can help 4-H’ers develop various life skills in positive and healthy ways. These 4-H Projects help young people gain technical and soft skills as they move through each project, contributing to academic and vocational success.

## What is the Danish System?

In 4-H, we target the learning process to help young people build essential life skills to thrive. The Danish system is a method to evaluate a participant’s project relative to the standards developed for that class or contest. This system is not used to evaluate participants against other participants or other items. The Danish system highlights areas of success and topics that may need improvement to encourage youth to challenge themselves, set goals and receive constructive criticism. The participant’s hard work is recognized as each participant learns to improve their skills “to make the best better.” While no evaluation system is perfect, the Danish system helps 4-H develop top quality youth instead of focusing on blue ribbon projects.

## 4-H is Positive Youth Development

Research shows that participation in high quality 4-H programs increases thriving in youth, and thriving youth achieve important developmental outcomes, such as academic motivation and important skills needed to enter the workforce.

---

**Overall Grand Supreme Award** in the static exhibits is presented in each project group category. The award is based on the exhibitor’s interview, knowledge, workmanship, and accomplishment done in the project. **To receive the award you must receive a champion ribbon.**

**CHAMPION** indicates an exhibit that stands out above the rest when an exhibit is compared to another in a class. Is based on the exhibitor’s interview, knowledge, workmanship, and accomplishment done in the project. Must be blue ribbon quality.

**RESERVE CHAMPION** indicates an exhibit that stands out above the rest except for the champion when an exhibit is compared to all items within a class. Is based on the exhibitor’s interview, knowledge, workmanship, and accomplishment done in the project. Must be blue ribbon quality.

**HONORABLE MENTION** indicates an exhibit that has outstanding qualities, and the interview with 4-H’ers made a lasting impression with the judges but is not champion or reserve quality. Must be blue ribbon quality.

**BLUE RIBBON** – Excellent. The exhibitor meets the standard and expectation of

the project. The exhibit shows high quality work and knowledge of the project. This does not indicate perfection; rather, it rewards average or above average work. Minor faults are corrected immediately when possible.

- Challenge yourself by asking what steps you might change to build on this project to foster the growth mindset.
- Empower your voice. Identify your unique gifts and talents and help identify how you could help someone else with the skills you used on this project.

**RED RIBBON** — Good. The exhibitor didn't meet all the standards and expectations of the project. The exhibit shows quality work and knowledge of the project; however, some improvements can be made in workmanship, design, or expression of what was learned in the project. Major and minor faults occurred.

- Teach the importance of growth mindset. Through effort and hard work, help set goals to get better. What can you try differently?
- Self-Regulation, or the ability to make choices with a goal in mind, is a key skill for goal setting and ultimately perseverance or "grit".

**WHITE RIBBON** — Fair. The exhibitor did their best, but many improvements are needed to meet the pre-established standards. The exhibit can be improved in workmanship, design or knowledge shared about the project. Several major, minor, and severe faults occurred. This includes disqualification.

- Teaches you to manage emotion, effectively and positively. Explore the great learning opportunities that come with receiving a white ribbon.
- When you reach a roadblock to your goals, reflect on what didn't work and develop new strategies for achieving the goal.
- Thank you for taking a healthy risk simply by participating.

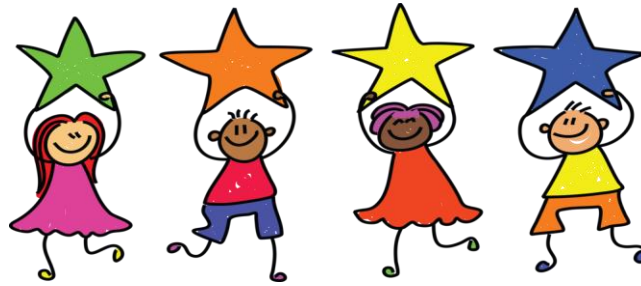
4-Here, you are a **WINNER** when you...  
... have done your best.  
... have fun and make new friends.  
... learn a lot just by being involved.



No ribbon or award can tell people  
ALL you have really learned.

**CONGRATULATIONS!**  
You can be very proud of yourself.  
We are.

*Each person is a winner for trying.*



## **GRANT COUNTY FAIR ASSOCIATION**

President	- Trampis Brenner	
Vice President	- Dylan Fuchs	
Secretary & Treasurer	- Donna VandenBurg	
	Chris Fischer	Jody Fuchs
	Betty Sprenger	Karen Scholes
	Dick Woodbury	Kathy Hoff
	Michael Schmid	Ty Zingg
	Jake Koenig	Darrell Hartman

## **GRANT COUNTY EXTENSION STAFF**

Tessa Osterbauer	County Extension Agent/Agriculture & Natural Resources
Amanda Dahners	County Extension Agent/Family & Community Wellness
Donna VandenBurg	County Extension Administrative Assistant

## **GRANT COUNTY 4-H LEADERS**

Aricka Brenner	Ashley Doepke	Kathy Hoff
Kalyssa Leithold	Lorele Leithold	Amanda Petrick
Beth Roth	Kari Schaff	Kyla Zenker

## **GRANT COUNTY 4-H COUNCIL OFFICERS**

President	Aricka Brenner
Vice President	Betty Sprenger
Secretary	Amanda Petrick
Treasurer	Lorele Leithold

## **Awards and Sponsors**

#### BEEF:

Pre-Junior Champion 4-H Beef Heifer - Brenner Angus, Sidney & Melva Brenner, Carson  
Pre-Junior Reserve Champion 4-H Beef Heifer - Larry E. Hinderer, Carson  
Pre-Junior Champion 4-H Beef Steer – First International Bank & Trust, Elgin  
Pre-Junior Reserve Champion 4-H Beef Steer – 7M Simmentals, Marty & Medora Meyer, Elgin  
Supreme Champion Market Beef – Ternes Gelbvieh, Raleigh  
Supreme Reserve Champion Market Beef – Ackerman Angus, Dan & Marie Ackerman, Elgin  
Group 1 Champion Market Beef - Greg & Karen Scholes, Carson  
Group 1 Reserve Champion Market Beef - Greg & Karen Scholes, Carson  
Group 2 Champion Market Beef – Dahners Ranch, Jeff & Audrey Dahners, Almont  
Group 2 Reserve Champion Market Beef – Keller Broken Heart Ranch, Mandan  
Group 3 Champion Market Beef – In Memory of Jordan Heupel  
Group 3 Reserve Champion Market Beef – Barb Kraft in Memory of Dick Kraft, Carson  
Group 4 Champion Market Beef – Farm Credit Services of Mandan – Carson Branch  
Group 4 Reserve Champion Market Beef – Campbell Red Angus, McIntosh  
Champion Beef Breeding Heifer – Campbell Red Angus, McIntosh  
Reserve Champion Beef Breeding Heifer – Fuchs Angus – Jody Fuchs, Flasher  
Champion Breeding Heifer Calf - Weinhandl Ranch, Shields  
Reserve Champion Breeding Heifer Calf – Blue Hill Ranch, Carson  
Champion Overall Beef Breeding Heifer – Woodbury Ranch, Dick & Jess  
Reserve Champion Overall Beef Breeding Heifer – Woodbury Ranch, Dick & Jess  
Champion Feeder Steer Calf - Dakota Community Bank & Trust, New Leipzig  
Reserve Champion Feeder Steer Calf - Gaugler Ranch - Roger & Ardella Gaugler, Almont  
Champion Cow/Calf Pair – Dustin & Kyra Werner, Carson  
Reserve Champion Cow/Calf Pair – Dustin & Kyra Werner, Carson  
Pre-Junior Champion 4-H Beef Showmanship – Fitterer Gas & Oil Co. Inc., Flasher  
Pre-Junior Reserve Champion 4-H Beef Showmanship – Jeremy & Ashley Doepke, Almont  
Junior Champion Beef Showmanship – Dahners Ranch, Jorey & Amanda Dahners, Carson  
Junior Reserve Champion Beef Showmanship - North Dakota Cattlemen District 6  
Senior Champion Beef Showmanship – Trampis & Aricka Brenner, Southwest Sioux Township  
Senior Reserve Champion Beef Showmanship - Miller Distributing, Inc., Carson

#### SWINE:

Champion Market Hog - Gail Weishaar & the Late Wayne Weishaar, Bowman  
Reserve Champion Market Hog – Jim & Jody Hauge, Bismarck  
Champion Breeding Gilt – Clarence Jr. & Nola Roth, New Leipzig  
Reserve Champion Breeding Gilt – Farmers Union Insurance, Osterbauer Agency - Flasher  
Pre-Junior Champion 4-H Swine – Hartman Family  
Pre-Junior Reserve Champion 4-H Swine – Grant County Soil Conservation District  
Pre-Junior Champion 4-H Swine Showmanship – Dogtooth Tractor Club, Raleigh  
Pre-Junior Reserve Champion 4-H Swine Showmanship – Hoff Ranch – Bob & Kathy Hoff  
Senior Champion Swine Showmanship – D & T Catering – Dylan Fuchs & Trampis Brenner  
Senior Reserve Champion Swine Showmanship – Dakota Crop Insurance – Holly Koenig - Mandan  
Junior Champion Swine Showmanship – Heritage Hog Homestead - Leith  
Junior Reserve Champion Swine Showmanship – Grant-Morton Insurance Agency



#### SHEEP:

Pre-Junior Champion

4-H Lamb – Sandland

Welding, Selfridge

Pre-Junior Reserve Champion 4-H Lamb – First International Bank & Trust, Elgin

Champion Market Lamb – In Memory of Nancy Maier

Reserve Champion Market Lamb – In Loving Memory of Gordon & Charlotte Timboe, Carson

Champion Ewe Lamb – WJ Trucking, Flasher

Reserve Champion Ewe Lamb – Jim & Jody Hauge – Bismarck

Champion Ewe – Koenig Ranch – Jake & Kelli Koenig – Carson

Reserve Champion Ewe – A & S Country Market – Carson

Champion Ram Lamb –

Reserve Champion Ram Lamb –

Senior Champion Sheep Showmanship – Hillius Trucking, Carson

Senior Reserve Champion Sheep Showmanship – Dakota Grain & Livestock Supply, Elgin

Junior Champion Sheep Showmanship – Grant County State Bank, Carson

Junior Reserve Champion Sheep Showmanship – Galen & Sara Maier - Carson

Pre-Junior Champion 4-H Sheep Showmanship – Levorsen Accounting & Tax, PC, Elgin

Pre-Junior Reserve Champion 4-H Sheep Showmanship – El Rancho Motel, Carson

#### GOATS:

Pre-Junior Champion Dairy Goat –

Pre-Junior Reserve Champion Dairy Goat –

Pre-Junior Champion Dairy Goat Showmanship –

Pre-Junior Reserve Champion Dairy Goat Showmanship -

Champion Dairy Goat Doe – Gooseneck Implement, Elgin

Reserve Champion Dairy Goat Doe – Shelly Seibel Agency, Elgin

Champion Dairy Goat Yearling Doe – Liberty Dirtwork, Leland & Heather Cook, Carson

Reserve Champion Dairy Goat Yearling Doe – Bammer's Seamless Gutters, Flasher

Champion Dairy Goat Buck – Grant County News/Carson Press, Elgin

Reserve Champion Dairy Goat Buck – Dakota Foam & Electric – Jason & Cody Kraft, Carson

Champion Dairy Goat Dry Doe – Grant-Morton Insurance Agency - Carson

Reserve Champion Dairy Goat Dry Doe – Central Dakota Frontier Cooperative

Champion Dairy Goat Doe in Milk – Hoff Ranch – Bob & Kathy Hoff, Leith

Reserve Champion Dairy Goat Doe in Milk – New Salem Veterinary Clinic

Champion Overall Dairy Goat – Wild at Heart Dairy Goats, Leith

Reserve Champion Overall Dairy Goat – Wild at Heart Dairy Goats, Leith

Senior Champion Dairy Goat Showmanship – Liberty Dirtwork – Lee & Heather Cook - Carson

Senior Reserve Champion Dairy Goat Showmanship

Junior Champion Dairy Goat Showmanship – Michael & Christine Sandland – Selfridge

Junior Reserve Champion Dairy Goat Showmanship -

Champion Market Meat Goat – Security First Agency of ND, Nevada Silha, New Salem

Reserve Champion Market Meat Goat – Blue Hill Ranch, Carson

Champion Meat Goat Yearling Doe – Farmer Union Insurance, Osterbauer Agency - Flasher

Reserve Champion Meat Goat Yearling Doe – November Blue Embroidery - Raleigh

Champion Meat Goat Doe – PJ's Farm Supply, Inc., Flasher

Reserve Champion Meat Goat Doe –

Champion Meat Goat Buck – Luke & Betty Sprenger – Elgin

Reserve Champion Meat Goat Buck -

Junior Champion Meat Goat Showmanship – El Rancho Motel, Carson

Junior Reserve Champion Meat Goat Showmanship – Grant County News/Carson Press, Elgin

Senior Champion Meat Goat Showmanship – Jeff & Erica Ulrich, Carson

Senior Reserve Champion Meat Goat Showmanship – Koenig Ranch, Jake & Kelli Koenig, Carson

Pre-Junior Champion Meat Goat – Christine Sandland & Kids - Selfridge

Pre-Junior Reserve Champion Meat Goat – Tatro Ranch – Kayla & Jacob Tatro - Carson

Pre-Junior Champion Meat Goat Showmanship – Saul & Sheri Maier, Elgin

Pre-Junior Reserve Champion Meat Goat Showmanship – Strommen Ranch - Solen

#### DAIRY

Pre-Junior Champion Dairy –  
Pre-Junior Reserve Champion Dairy –  
Pre-Junior Champion Dairy Showmanship -  
Pre-Junior Reserve Champion Dairy Showmanship -  
Champion Dairy Breeding Heifer – Bob, Deb, Luke, & Chelsea Hintz, Flasher  
Champion Dairy Breeding Heifer -  
Senior Champion Dairy Showmanship – Michael & Christine Sandland - Selfridge  
Junior Champion Dairy Showmanship –  
Champion Dairy Dry Cow over 24 months of age – Strommen Livestock - Solen

#### SHOWMAN:

Junior Champion Overall Showman – First International Bank & Trust, Elgin  
Senior Champion Overall Showman - Duane & Rita Striegel & Family, Leith (Traveling)  
Senior Champion Overall Showmanship – Interstate Engineering, Mandan

#### HORSE:

Pre-Junior Champion 4-H Halter Class – Blake & Kacey Isbell, Solen  
Pre-Junior Reserve Champion 4-H Halter Class – Stacey & Kyle Woodbury - Carson  
Junior Champion 4-H Halter Class – In Memory of Amy Loeb, Raleigh  
Junior Reserve Champion 4-H Halter Class – TJ Osterbauer - Flasher  
Senior Champion 4-H Halter Class - In Memory of Tyler Loeb, Raleigh  
Senior Reserve Champion 4-H Halter Class -  
Junior Champion 4-H Horsemanship Performance – Kay Stevenson, Carson  
Junior Reserve Champion 4-H Horsemanship Performance – Trampis & Aricka Brenner  
Senior Champion 4-H Horsemanship Performance – Ty & Jen Zingg, Carson  
Senior Reserve Champion 4-H Horsemanship Performance – Revive Equine, LLC - Almont  
Junior Champion 4-H Speed Events – LaRena Weik  
Junior Reserve Champion 4-H Speed Events – LaRena Weik  
Senior Champion 4-H Speed Events – LaRena Weik  
Senior Reserve Champion 4-H Speed Events – LaRena Weik

#### SMALL ANIMALS:

Senior Champion 4-H Pets - Elgin Vet Service, Elgin  
Senior Reserve Champion 4-H Pets -  
Junior Champion 4-H Pets – Sure Weigh Scale Service, Flasher  
Junior Reserve Champion 4-H Pets -  
Senior Champion 4-H Rabbits - Flasher Farmers Union Grain, Flasher  
Senior Reserve Champion 4-H Rabbits -  
Junior Champion 4-H Rabbits – Michael & Christine Sandland - Selfridge  
Junior Reserve Champion 4-H Rabbits -  
Senior Champion 4-H Rabbits Showmanship – Carson Women's Club  
Senior Reserve Champion 4-H Showmanship -  
Junior Champion 4-H Rabbits Showmanship – Flying H Buffalo Ranch, Raleigh  
Junior Reserve Champion 4-H Rabbit Showmanship -  
Senior Champion 4-H Poultry – Carson Women's Club  
Senior Reserve Champion 4-H Poultry -  
Junior Champion 4-H Poultry – First International Bank & Trust, Elgin  
Junior Reserve Champion 4-H Poultry – Farmers Union Insurance – Osterbauer Agency - Flasher  
Senior Champion 4-H Poultry Showmanship – Kacey & Blake Isbell, Solen  
Senior Reserve Champion 4-H Poultry Showmanship  
Junior Champion 4-H Poultry Showmanship – The Sippin' Chicken, Elgin  
Junior Reserve Champion 4-H Poultry Showmanship

#### OVERALL STATIC EXHIBITS:

Senior Champion 4-H Environmental - True Value, Elgin  
 Senior Reserve Champion 4-H Environmental  
 Junior Champion 4-H Environmental – Donna VandenBurg, Carson  
 Junior Reserve Champion 4-H Environmental -  
 Senior Champion 4-H Plant Science – Southwest Grain, Elgin  
 Senior Reserve Champion 4-H Plant Science  
 Junior Champion 4-H Plant Science – Farm Credit Services of Mandan, Carson  
 Junior Reserve Champion 4-H Plant Science – Fredrick Seed - Flasher  
 Senior Champion 4-H Engineering Science & Technology - Stelter Repair, Inc., New Leipzig  
 Senior Reserve Champion 4-H Engineering Science & Technology – Michael & Christine  
 Sandland - Solen  
 Junior Champion 4-H Engineering Science & Technology – Grant County Abstract Office  
 Junior Reserve Champion 4-H Engineering Science & Technology  
 Senior Champion 4-H Healthy Lifestyle Education - Double R Meats, Carson  
 Senior Reserve Champion 4-H Healthy Lifestyle Education  
 Junior Champion 4-H Healthy Lifestyle Education – R Family Market, Elgin  
 Junior Reserve Champion 4-H Healthy Lifestyle Education – Grant County Abstract Office -  
 Carson  
 Senior Champion 4-H Clothing & Textiles – Alton & Cherie Zenker, Carson  
 Senior Reserve Champion 4-H Clothing & Textiles  
 Junior Champion 4-H Clothing & Textiles – Our Place Café, Lanes & Lounge, Elgin  
 Junior Reserve Champion 4-H Clothing & Textiles  
 Senior Champion 4-H Family & Consumer Science – Nancy & Alan Malm, Flasher  
 Senior Reserve Champion 4-H Family & Consumer Science -  
 Junior Champion 4-H Family & Consumer Science – In Memory of Ione Scholes, Carson  
 Junior Reserve Champion 4-H Family & Consumer Science -  
 Senior Champion 4-H Communication & Expressive Arts – Frog Hair, Carson  
 Senior Reserve Champion 4-H Communication & Expressive Arts – Grant County Abstract  
 Office - Carson  
 Junior Champion 4-H Communication & Expressive Arts- Carson Women's Club  
 Junior Reserve Champion 4-H Communication & Expressive Arts -

*Thank you for your support*

The Bee who collects all the Honey will seldom be found at the hive...You are the U in your Unit



Are you an active member? The kind that would be missed?  
 Or are you just contented that your name is on the list.  
 Do you attend the meetings? And Mingle with the flock?  
 Or do you stay at home to criticize and knock?  
 Do you take an active part to help the work along?  
 Or are you satisfied to only "just belong".  
 When the business sessions come around,  
 Do you pretend to be sick and leave the work to just a few?  
 Then talk about the clique?  
 THINK THIS OVER, M E M B E R  
 You know right from wrong...  
 Are you an ACTIVE MEMBER...or do you "Just Belong"?

## **Trustworthiness**

Livestock exhibitors demonstrate that they are trustworthy when they:

- Record birth and possession dates of animals accurately.
- Refuse to use dishonest practices to alter an animal's appearance, size, weight, or behavior.
- Maintain true ownership of their animals and do not show animals someone else has produced.
- Do as much of the grooming and fitting of an animal as they are capable of by themselves.
- Accept help and guidance from those designated by the show's guidelines, whether show officials, volunteers, or managers.
- Accept full responsibility for the care and feeding of their animals.
- Talk honestly to fellow exhibitors and share all the information they need in selecting and caring for animals.
- Meet all their obligations, such as paying a breeder on time.
- Make clear commitments that are understood by everyone involved in the project, including family members and sponsors.
- Remain loyal to their animals throughout the project, providing animals' proper care as long as they possess them.

An exhibitor with integrity will:

- Always do the right thing, even when the right thing is not the popular thing to do.
- Report violations of show rules or guidelines.
- Display good character and grace in losing or in winning.
- Treat animals with dignity and respect.
- Exhibit the ethical behavior that their families, sponsors and show managers expect.

## **Respect**

Respectful exhibitors will:

- Live by the Golden Rule, treating other exhibitors, spectators, and judges as they themselves want to be treated.
- Treat others with consideration, be courteous and polite, and show appreciation to adults and fellow exhibitors.
- Give adults and fellow exhibitors' complete and accurate information needed to make decisions.
- Be tolerant, respectful, and accepting of those who show a different breed or species of livestock.
- Value and honor others and help others value themselves.
- Listen to others and try to see their points of view.
- Respect the property of other exhibitors, the show facility, and the show barn equipment.
- Show respect for animals through proper care, feeding, housing, and handling.
  - Feed animals on time and provide fresh, clean water.
  - Keep pens clean and dry.
  - Provide shelter from severe weather.
  - Handle animals in a safe, humane way.
- Honor the independence of other exhibitors: allow them to have privacy and dignity.
- Allow others to have a voice in decisions that affect them.
- Refuse to threaten, intimidate, coerce, harass, or in any other way hurt other exhibitors or visitors in the barn or during the show.
- Focus on the experience and not the goal of winning.
- Solve disagreements, respond to insults and deal with anger peacefully.
- Refuse to use threats or violence to get what they want or to express anger.

## Responsibility

A responsible exhibitor will:

- Develop knowledge, skills, and judgment about the desired characteristics of the animal he/she is showing and how to prepare the animal for show.
- Ensure that the animal's birth date is recorded accurately.
- Adhere to possession dates when purchasing animals.
- Be truthful and honest when helping fellow exhibitors select animals.
- Show loyalty to everyone involved in the project – the breeder, family members, other exhibitors, the sponsoring organization, the sponsoring show, and consumers.
- Have a sense of duty toward the animal – feed it on schedule, provide fresh water and proper housing, and groom and exercise it regularly.
- Feed only approved livestock rations.
- Use only approved drugs and medicines.
- Go beyond providing the daily needs of the animal by spending extra time to train and groom it properly.
- Learn about the best production practices and encourage fellow exhibitors to learn.
- Use good work habits and keep tools and equipment clean and organized.
- Ask for permission before borrowing tools and return borrowed tools in good condition.
- Keep the animal calm and handle it in a way that will not interfere with other animals and handlers.
- Refrain from rough housing, loud talking, put-downs and gossip.
- Follow the designated schedule for using show barn facilities and equipment.
- Do each job as well as it can be done, even if time and resources are short?
- Be prepared to deal with problems such as a crowded washing area, shortage of water or interference from spectators.
- Be a role model for peers and younger exhibitors.
- Know the show guidelines for the animal being exhibited.
- Be persistent from day to day to avoid last-minute problems.
- Fit and groom the animal according to recommended procedures.
- Meet deadlines for entry forms and for arriving at livestock shows.
- Fulfill responsibilities assigned by the leader, teacher, or sponsor.
- Follow the judge's directions.
- Refuse to give up or quit in the show ring.
- Prepare the animal for sale.
- Demonstrate good showmanship during and after the sale.
- Know the rules and regulations for selling animals.
- Write thank-you notes and letters of appreciation to buyers and others who helped make the project a success.
- Continue to take good care of the animal until it is delivered to the purchaser.
- Keep project books complete and up to date.
- Keep an accurate list of all medicines and medical care given to the animal.
- Keep accurate feeding records that show what, when and how much the animal was fed.

## **Fairness**

An exhibitor will show fairness by:

- Treating all people fairly.
- Listening to others and trying to understand what people are saying and feeling.
- Considering all the facts and opinions before deciding about a production or exhibiting issue.
- Making fair decisions, using the same rules for everyone.
- Showing a commitment to justice and impartiality at home, school, and club meetings, on trips, and at shows and sales.
- Admitting mistakes and correcting them promptly.
- Accepting the differences of others and avoiding social cliques.
- Living up to agreements.
- Using only his/her share of the time and limited resources at a show (for example, washing an animal only at the time scheduled and using only equipment that has been scheduled for use).
- Following guidelines for exhibiting the animal properly in the show ring.
- Refusing to allow personal preferences, prejudices, or feelings to get in the way of making sound decisions.
- Speaking encouragingly to exhibitors when they have failed or made mistakes.

## **Caring**

Caring exhibitors will:

- Stay alert to the needs of the animal and show compassion for the animal.
- Treat animals humanely always.
- Show compassion and kindness to all people.
- Consider the needs of other exhibitors.
- Share resources and equipment with others, especially younger exhibitors.
- Include first-time exhibitors in their circles of friends.
- Encourage exhibitors who seem to be struggling and offer to help or coach them.
- Help exhibitors who have disabilities or special needs.
- Understand and forgive the shortcomings of others.
- Not be cruel or insensitive to others.

## **Citizenship**

To show good citizenship, exhibitors will:

- Know and fulfil their responsibilities.
- Know and obey the rules, regulations, and laws.
- Stay informed about proper production and exhibiting practices.
- Promote good character within their organizations, their communities, and society.
- Protect the environment during the production and exhibiting of animals.
- Keep the show facilities clean and free of litter and trash.
- Volunteer to help fellow exhibitors.
- Be team players and strengthen their organization by modeling ethical behavior.
- Show respect to everyone.
- Work to improve things.

Source: Hammatt, Donald R., "What is the real purpose of 4-H livestock projects?" Louisiana State University Agricultural Center, 1999

# CARE OF ANIMALS

## ***Before the Fair:***

1. Select animals for the project that have docile behavior and temperaments.
2. Feed your animal a proper, balanced ration. Ask for help if needed.  
Watch your animal for signs of bloat. Contact your veterinarian in cases of bloat.
3. Start preparing animals at least 30 to 60 days before the fair. This includes working with them daily and adjusting them to as many show conditions as possible (This includes working around other animals. Being tied or confined, using show equipment, and using same feeding schedule as to be used during the show).
4. Spend time with your animal to tame it, speak to animals in a gentle, calm manner, use slow movements. Help animals get used to being tied, led, and handled. The use of a radio at home helps prepares animals for noise and strange sounds. Invite friends over to get the animal use to being around other people.
5. Have an animal health care program to prevent disease. Use proper methods of treatment or vaccination. Control both internal and external parasites. Always use drugs, medicines and other animal health products as described on the label. Off-label use without a veterinarian's prescription is illegal. Observe all withdrawal time. Do not use products not cleared for use in meat animals such as Clenbuterol and injectable anabolic substances.
6. Keep good records of feeding and health care.
7. Do not do anything which may cause any unnecessary pain to the animal or that may cause bruising, scarring, or unnecessary stress.
8. Trim and shape hooves about three weeks before the show to allow time for the feet to toughen.
9. Sort and load animals safely. Using prods or equipment that may cause bruising or unnecessary stress is not recommended.
10. Use a safe, clean, well-ventilated method of getting animals to the show.
11. If your animal becomes sick, injured or is not tame before the fair, leave it at home. The fair is not the place for this type of animal.

## ***During the Fair:***

1. Remember that your care and handling of your animal is on review by the public. This is your chance to show that livestock producers are concerned for the care and treatment of animals.
2. Prepare your area before bringing animals to it.
3. Make every effort to always make your animal comfortable. Provide feed, water, bedding, and use fans in hot weather.

4. Provide animals shelter from sun, wind, and bad weather
5. Provide fresh, clean water always.
6. To make sure animals drink enough water during the show, add a little molasses or a few drops of lemon juice to mask the taste of water, starting about two weeks before the show. Then add it to the water at the show.
7. Feed animals regularly, with adequate amounts of a balanced diet.
8. Observe animals daily and get immediate treatment or veterinarian care for those needing it.
9. If your animal becomes sick, bloated, injured or wild remove it from the fairground as soon as possible. Remember, the public is watching.
10. If your animal is sold at the fair, talk to the buyer about the care of the animal until it is removed from the fairgrounds. Most animals are removed shortly after the fair but sometimes other arrangements will need to be made.
11. If you are approached by someone who wants to talk about animal rights; do not begin a debate. Do not try to change their minds and do not argue with them. A response that may work is to say, "You are entitled to your opinion." Seek the help of an adult if the person persists. You can also refer them to the Extension staff.

### ***Show Management:***

1. Remove the manure and waste regularly and take to a designated area.
2. Never leave animals alone in a blocking or fitting chute.
3. Tie or pen animals securely so they cannot escape and run loose on the fairgrounds.

### **Hogs:**

- Do not use oil when fitting hogs for show. Oil decreases the animal's ability to cool down in hot weather and makes it harder to remove hair during processing.
- Use showing bats, show canes, plastic pipes, or other approved showing devices to gently guide hogs. If these devices are used with force, they will bruise the carcasses.

### **Sheep:**

- Do not leave sheep alone on the fitting stand.
- Protect closely shorn, washed lambs from flies. Closely shorn lambs are vulnerable to fly strike and short fleece (5/8") also decreases the value of the pelt. Follow local show rules regarding fleece length.

**Dairy:**

- Do not inject any substances into the teat or udder for the purpose of filling or shaping parts of the mammary system.
- Follow good milking practices to protect the cow's udder health. Milk a clean, dry udder with a properly operating milking system and dip teats with an approved teat dip after milking.
- Always adjust halters so they are properly fitted to give good control, but do not cut into the skin of the animal or interfere with the animal's ability to breathe.

**If you do not have your brand release (bill of sale) for your market beef filled out and with you at the time of weigh-in, you will not be allowed to unload your animal and will be sent to the end of the line. Even if there is no brand, the bill of sale (brand release) must be filled out.**

**Example of how to fill out a bill of sale (brand release).**

Nancy Doe a 4-Her from Carson purchased a black, white face steer calf on November 10<sup>th</sup> from her dad, John Doe. John's brand is **JZ** and is branded on the right rib. This Bill of Sale (brand release) makes Nancy the legal owner of this calf which she plans to sell at the Grant County Fair. The bill of sale (brand release) must have the following information filled out: name and address of the person who the calf was sold to, date of purchase and signed by a witness and the seller.

# ANIMAL EXHIBITS

Livestock Section - 4-H and FFA Rules and Regulations:

1. The Grant County Fair Board reserves the final and absolute right to interpret these rules and regulations and settle and determine all matters, questions and differences in regard thereto, or otherwise arising out of, connected with, or incident to the Fair.
2. Only those enrolled in the Grant County 4-H Program or in an FFA Program, who are Grant County residents or affiliated with a Grant County School, are eligible to exhibit. Members must have met the project requirements for the current year. Animals to be exhibited must be fed and owned by members enrolled in that project.  
**Any market animal showed at a previous show and received a premium cannot be shown at the Grant County Fair. A separate market animal must be showed.**
3. Record sheet must be up to date.
4. If a change in livestock entries occurs due to an injury, illness or died a written letter from the attending veterinarian must be sent to the Extension Office at PO Box 137, Carson, ND prior to August 8<sup>th</sup>. Substitutions will not be allowed without previous notice.
5. Judging of 4-H and FFA will be combined, one animal per class will be allowed.
6. Once 4-H and FFA members enter the show ring, the Fairboard will assist as they see fit.
7. **No animals will be allowed in the barns on the Wednesday before the Fair.** Livestock enter 8 am – 11 am MT on Thursday, August 14. All market animals must remain on display until 2:30 pm MT on Saturday, August 16.  
**If a market animal is not picked up by 5 pm MT after the livestock sale on Saturday, the animal becomes property of the Grant County Fairboard. All breeding animals can go home after judging on Friday except Champion and Reserve Champion.**
8. **Entry day (Thursday, August 14) all market beef must have a bill of sale (brand release) filled out and with you at the time of weigh-in, you will not be allowed to unload your animal and will be sent to the end of the line. All market beef regardless of branded or not must have the proper Bill of Sale (brand release). No market animal can be penned in barn until brand inspected and weighed. Refer to page 3 on how to fill out a bill of sale (brand release) correctly.**
9. A release form must be signed by the parents giving permission to sell the animal.
10. 4-H and FFA members showing livestock will be given a number and a t-shirt at weigh-in. 4-H and FFA members will have to wear this number and t-shirt on Friday, August 15 during livestock judging.
11. All sheep and goats shown at the Grant County Fair are required to have the scrapie identification tag in or the animal will not be able to be exhibited.

12. Any animal that shows signs of infectious and contagious diseases including ring worm and warts or any visible signs of sickness including bloat will not be permitted to be exhibited at the fair and will be sent home. This policy is for your own protection as all animals at the fair are not slaughtered and may return home and could infect the rest of the herd if this is not enforced. A committee will consist of 4-H Council President, Fairboard President and Vice President or an appointed representative. This committee will be present at weigh in and during the fair to determine if animal stays or should return home. The committee will serve during the whole fair, and will be posted in the barn as to whom the people are on this committee.
13. Any entries that are late on Thursday or any animals left after 4:00 pm MT on Saturday, August 16, the 4-H or FFA member will forfeit their premium.
14. Pre-Junior exhibitor 8 years of age and under, must enter, Pre-Junior beef, dairy, goat, lamb, and hog by 8 am MT on Friday, August 15. After the Livestock Show, animals can be taken home. Pre-Junior classes will be judged on live evaluation of the animal and there will be a separate showmanship. Heifers and steers will be judged separately. Pre-Junior beef, lamb, goat, dairy and hog the animal should be born after January 1st.
15. No Pre-Junior Beef will be allowed to be shown in the feeder calf class.
16. If you are showing a cow/calf pair, you will be allowed to show that calf in the feeder calf class.
17. No bulls will be allowed except for the cow/calf division the calf may be a bull, steer or heifer.
18. No bred gilt will be allowed in the market class.
19. **Animals must be owned or leased and managed by the 4-H and FFA member who enters the animal. Market beef animals must be owned or leased with daily management by the exhibitor by March 1, 2025. Beef breeding animals, dairy, swine, sheep, and goat exhibit must be owned or leased, with daily management by May 1, 2025. Any animal born after May 1, 2025 must be progeny animals owned from date of its birth by the exhibitor.**
20. Livestock exhibit space will be provided by the Grant County Fair Association.
21. **No wood chips will be allowed in the Beef Building. Straw only. Straw and wood chips can be used in the Small Animal Building.**
22. Livestock exhibitors will be expected to maintain their stall space and keep clean and in show condition. The area will be controlled by the Fairboard.
23. Washing of animals will be allowed only in the wash rack area.
24. **Livestock exhibitors must furnish feed and bedding for their animals. No feeding of animals in the show ring. It is okay to feed in the barns, but cannot keep feed (hay and grain) in the barns. All feed should be stored in vehicles outside of barns. The reason is so other animals do not get into someone else's feed.**

25. No clipping chutes will be allowed in the barns. Space has been provided outside.
26. For daily cleaning, an area outside has been provided for you to put your straw and woodchips.
27. Dress. 4-H and FFA members will be given a t-shirt to wear during the livestock show and sale. The t-shirt must be worn and tucked in during the show. The following is also recommended:
- jeans/pants
  - protective shoes or boots when showing livestock
  - dairy - white jeans/pants are not required.
- Dressing appropriately is encouraged throughout the fair.
28. **Parents or spectators will not be allowed in the show ring or prep area during judging and sale.**
29. Criticism or interference with the judge, fair or livestock show management, other exhibitors, or show officials before, during, or after the competitive event is prohibited. In the furtherance of their official duty, all judges, fair and livestock show management, or other show officials shall be treated with courtesy, cooperation and respect and no person shall direct abusive or threatening conduct toward them.
30. All protests must be made in writing to the livestock committee (president, vice president of Fairboard and president of 4-H Council) within five hours after the conclusion of the show. Protests made before the show takes place must be brought to the livestock committee at least two hours before the show to provide the committee time to address the concern.
- All protests must be accompanied by a deposit of \$25.00, which shall be returned to the complainant if sustained, and if the protest is not sustained, then said sum shall be forfeited.
- No protest or appeal based upon the statement that the judge or judges are incompetent or have overlooked an animal will be considered.
- Protest must state plainly the cause of complaint or appeal, with specific changes and recital of facts relied upon on the rule violated, naming witnesses by whom proof is to be made and their addresses.
- All questions in dispute or differences not covered by these rules shall be referred to the Fairboard whose decisions shall be final.
- Specific reports of areas of concern should be brought to the attention of the Grant County Fair Manager (Fairboard President, Trampis Brenner and Fairboard Secretary, Donna VandenBurg).
31. **If show stock turns wild, sick, or uncontrollable, the animal will be stall-judged or tied to the fence for judging and will not be eligible for Champion or Reserve Champion. The committee will consist of 4-H Council President, Fairboard President and Vice President or an appointed representative to determine whether an animal is wild, sick, or uncontrollable. The committee will serve throughout the entire Fair and a list of committee members will be posted in the barn. Uncontrollable is when the exhibitor cannot control the animal and wild means the animal is on the fight.**

32. **Judging of 4-H and FFA Livestock will begin at 8:30 am MT on Friday, August 15.** The plans are to have two rings: swine and goats will be judged in one ring and sheep in the other. Hogs, goats, and sheep will be judged like always. Beef showmanship will be done while judging beef classes. Junior and Seniors will be called back to participate in showmanship. Pre-Junior beef will be run the same. Will have two judges: one for hogs and goats, and the other for sheep and beef. One of the judges will do beef showmanship.

ROUND-ROBIN: Junior and Senior Overall Showmanship

When selecting the supreme champion and reserve champion market beef, the champion and reserve champion animals from the groups 1, 2, 3, 4 will be in the show ring.

**All breeding animals can go home after judging on Friday except Champion and Reserve Champion.**

33. If anyone is late or not ready when his or her class is announced or being judged, that class will not be reopened.
34. Livestock will be judged and placed in blue, red and white ribbon groups.
35. If an exhibitor must leave before showing their animal, they cannot have anyone show their animal, the only time they will be able to have someone show their animal is a family emergency or injury.
36. **Showmanship entrants must use their own animals. No caps/hats worn during the showmanship classes and sale.**
37. A Round-Robin Showmanship Contest will be held for Senior (Ages 13-18) division and Junior (Ages 9-12) division following the completion of livestock judging. Champions show people in beef, dairy, sheep, swine, meat goat, dairy goat and horse are eligible to compete. Reserve Champion show person may substitute if champion cannot show. Cash prizes will be awarded as follows.
- |               |   |        |
|---------------|---|--------|
| First Place   | - | \$7.00 |
| Second Place  | - | \$6.00 |
| Third Place   | - | \$5.00 |
| Fourth Place  | - | \$4.00 |
| Fifth Place   | - | \$3.00 |
| Sixth Place   | - | \$2.00 |
| Seventh Place | - | \$1.00 |
| Plus ribbons. |   |        |
38. The Livestock Sale will be on Saturday, August 16 at 1:30 pm MT. **All bidders who will be bidding on 4-H or FFA animals will be required to pick up a number and fill out a bidder sheet prior to the sale. If you cannot be present at the sale and are having someone bid for you, please call the Grant County State Bank at 701-622-3491 to register who will be bidding for you and your billing information.**
39. If an animal is resold during the livestock sale, the money from the resale must be donated to the Grant County Fairboard.
40. **There will be a 5% commission collected on all market animals sold at the Fair. This does not apply to the resale of the animal.** This money will be used for improvements at the Fairgrounds.

41. All 4-H and FFA market animals including Grand and Reserve **will be sold** at the livestock sale with the option of reserving the rights with the buyer to show the animals at future shows. Cannot "NO SALE" an animal in the ring.
42. No drugs will be allowed on animals exhibited or sold at the Grant County Fair.
43. White ribbons will be given, and they will be able to sell the animal.
44. No premium money paid on Market animals sold.
45. Beef & Swine Check-off will be deducted from each individual's checks.
46. Financial transactions must be completed at the close of sale. All livestock purchases become property of buyer immediately upon completion of sale. 4-H and FFA member's check will be sent as soon as the buyer pays the Grant County State Bank.
47. Clean-up will be done on Saturday, August 16 after the livestock sale. All exhibitors are required to clean out their pen(s) and pile the straw and woodchips in the middle of the building or designated area. If your pen (s) is not clean a \$75.00 per pen fine will be assessed to you as a clean-up fee.
48. Once you return home – when animals from different farms are brought to a county fair and commingled with other animals of a different health status, the risk of catching a disease can be high. Just as people can spread illness to each other when gathered in a group, animals can spread illness to each other. Therefore, when you bring your animals home from the county fair, you should place it in isolation.  
Isolate your animal from other animals at your farm when returning home from the Fair.
  - Work with your veterinarian on an isolation plan. The isolation period before allowing the returning animal to have contact with other animals should be a minimum of seven to 30 days to detect an illness.
  - Do chores in the isolation area as the last task of the day after you already have worked with your other animals.
  - Have dedicated boots and coveralls for use only in the isolation area. Another option is to use disposable coveralls and plastic boots in the isolation area.
  - Supplies such as buckets, feed pans and trash cans should not be shared between the animals in isolation and other animals.
  - All equipment should be cleaned and disinfected thoroughly and allowed to dry after use in the isolation area.
  - Contact your local veterinarian and the event organizer if your animal becomes ill.
  - Clean and disinfect equipment, clothing, shoes, show box and contents, and vehicles/trailers that were used at the county fair.

<p style="text-align: center;"><b>SPORTSMANSHIP</b></p> <p>Is about exhibiting livestock with honor. Sportsmanship = livestock exhibition is a contest governed by high standards of integrity and ethics.</p>	<p style="text-align: center;"><b>GAMESMANSHIP</b></p> <p>Is all about winning for gain and glory. Gamesmanship = livestock exhibition is a chance to win by doing whatever you can get away with.</p>
--	--

# HORSEMANSHIP

Blue Ribbon - \$3.00

Red Ribbon - \$2.00

White Ribbon - \$1.00

Premium money paid on all six (6) performance events, no money on poles, barrels, goat tying and keyhole.

1. Dress Code - All exhibitors will be neatly dressed and must wear a long sleeved solid white shirt, western boots, blue or black jeans (dark colored). In addition, exhibitors must wear ASTM-SEI approved harness helmets for all mounted events. All youth will wear a helmet, securely fastened at all times while riding their horse on the rodeo grounds.
2. **The rules and guidelines GBH092 “ND Horse Show Rules” (dated May 2020) will apply.** Show management reserves the right to interpret the rules as necessary for issues not clearly defined. For all pattern classes, patterns should be posted a minimum of one hour prior to the start of the show.
3. Members must have managing control of their horse project. “Managing control” means overseeing proper feeding, grooming, exercising, training, and stall management and the member must have free access to the use of the horse at all times.
4. A horse owned or leased by more than one person may participate in an event only once in any age division. If two youth own or lease the horse but are in different age divisions, both may use the horse for the same event.
5. A 4-H member enrolled in 4-H Horsemanship Project must have managing control of the horse by **May 1**. The horse may be owned, rented, leased or borrowed for use as a 4-H project. If the horse is not owned, the legal owner must provide a written statement guaranteeing that the 4-H member has managing control of the animal by **May 1**. This statement is kept on file in the county extension office in the county of enrollment.
6. Drugs and medications: The International Association of Fairs and Expositions (IAFE) national code of show ring ethics will be followed by all horse exhibitors at the Grant County Fair. This code includes the following statement: At any time after an animal arrives on the Grant County Fairgrounds/Rodeo grounds remises, all treatments involving the use of drugs and/or medications shall be administered by a licensed veterinarian.
7. Any unnecessary whipping, jerking of the reins, talking, noise making, slapping, or any other action will be considered a fault and scored accordingly.
8. Only mares and geldings may be shown (weanling stud colts allowed).
9. All tack needs to be clean, neat, in good repair and properly adjusted.
10. Unsportsmanlike conduct or abusive language or actions on the part of any 4-H exhibitor, parent, family member or leader will be dismissed from the class.



11. Only exhibitors and show officials will be allowed in the ring while the show is in progress. Exhibitors wishing to discuss any matter with the judge must contact the ring steward (after completion of the class), who will arrange an appointment if the judge approves. The judge's decision in all classes shall be final.
12. First place in the Junior and Senior Halter Showmanship Class will need to be present on Friday to participate in the Round-Robin Showmanship Contest. If the first place Halter Class chose to show an animal in another class the second place Halter Class participant may then use the 1<sup>st</sup> place Halter Class horse.
13. Only those enrolled in the Grant County 4-H Program or in an FFA Program, who are Grant County residents or affiliated with a Grant County School, are eligible to exhibit. Members must have met the project requirements for the current year.
14. You can use the Rodeo grounds back pens to house your horse, you must have your horse removed by Friday at 9 am MT. You are responsible for cleaning up your area or you will be fined \$75.

## Division 1 – Horsemanship

<b>Showmanship at Halter Class</b> 101 Pre-Junior Division (under 8) 102 Junior Division (Age 8-12) 103 Senior Division (Age 13-18)	<b>Western Horsemanship Class</b> 104 Junior Division (Age 8-12) 105 Senior Division (Age 13-18)
<b>Western Pleasure Class</b> 106 Junior Division (Age 8-12) 107 Senior Division (Age 13-18)	<b>Trail Class</b> 108 Junior Division (Age 8-12) 109 Senior Division (Age 13-18)
<b>Reining Class</b> 110 Junior Division (Age 8-12) 111 Senior Division (Age 13-18)	<b>Ranch Riding Class</b> 112 Junior Division (Age 8-12) 113 Senior Division (Age 13-18)
<b>Pole Bending Class</b> 114 Junior Division (Age 8-12) 115 Senior Division (Age 13-18)	<b>Barrel Racing Class</b> 116 Junior Division (Age 8-12) 117 Senior Division (Age 13-18)
<b>Goat Tying Class</b> 118 Junior Division (Age 8-12) 119 Senior Division (Age 13-18)	<b>Keyhole Race Class</b> 120 Junior Division (Age 8-12) 121 Senior Division (Age 13-18)



## Division 2 - 4-H and FFA Swine

***No bred gilt will be allowed in the market hog class.***

Blue Ribbon - \$2.50

Red Ribbon - \$1.75

White Ribbon - \$1.25

### **Class**

- 201 Pre-Junior Swine (2025 swine) Exhibitors 8 years of age and under.
- 202 Breeding Gilt, any breed
- 203 Market Barrow or Gilt

Blue Ribbon - \$1.00

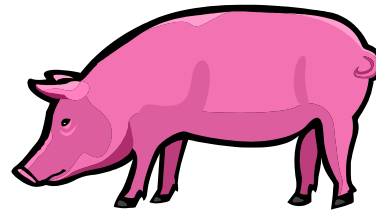
Red Ribbon - \$.75

White Ribbon - \$.50

(Exhibitor must enter lot based on age before September 1, 2024)

### **Class**

- 204 Pre-Junior Swine Showmanship (8 and under)
- 205 Junior Swine Showmanship (9 to 12)
- 206 Senior Swine Showmanship (13 to 18)



## Division 3 - 4-H and FFA Sheep

Blue Ribbon - \$2.50

Red Ribbon - \$1.75

White Ribbon - \$1.25

**All sheep shown at the Grant County Fair are required to have the scrapie identification tag or the animal will not be able to be exhibited.**

### **Class**

- 301 Pre-Junior Lamb (2025 Lamb) Exhibitor 8 years of age and under.
- 302 Ewe
- 303 Ewe Lamb
- 304 Ram Lamb (born in current year)
- 305 Market Lamb – Ewe Lamb or whether lamb

Blue Ribbon - \$1.00

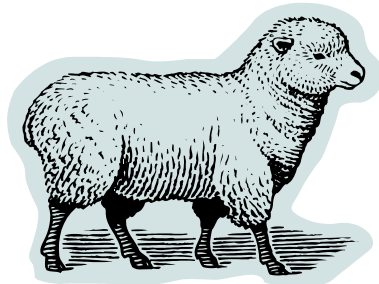
Red Ribbon - \$.75

White Ribbon - \$.50

(Exhibitor must enter lot based on age before September 1, 2024)

### **Class**

- 306 Pre-Junior Sheep Showmanship (8 and under)
- 307 Junior Sheep Showmanship (9 to 12)
- 308 Senior Sheep Showmanship (13 to 18)



## Division 4 - 4-H AND FFA Goats

Blue Ribbons - \$2.50

Red Ribbons - \$1.75

White Ribbon - \$1.25

***All goats with the exception of market wether shown at the Grant County Fair are required to have the scrapie identification tag or the animal will not be able to be exhibited.***

### Meat/Hair/Pygmy Goats

#### Class

- 401 Pre-Junior Meat Goat (2025 Goat) Exhibitor 8 years of age and under.
- 402 Meat Goat – Doe (born in current year)
- 403 Meat Goat – Buck (born in current year)
- 404 Meat Goat - Yearling Doe (born in previous to current year)
- 405 Meat Goat - Two-year-old Doe
- 406 Meat Market Goat – Wether or Doe (born in current year)

Blue Ribbon - \$1.00

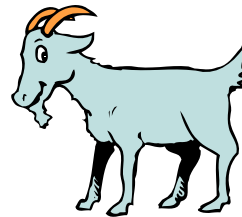
Red Ribbon - \$.75

White Ribbon - \$.50

(Exhibitor must enter lot based on age before September 1, 2024)

#### Class

- 407 Pre-Junior Meat Goat Showmanship (8 and under)
- 408 Junior Meat Goat Showmanship (9 to 12)
- 409 Senior Meat Goat Showmanship (13 to 18)



### Dairy Goats

#### Class

- 410 Pre-Junior Dairy Goat (2025 Goat) Exhibitor 8 years of age and under.
- 411 Dairy Goat – Doe (born in current year)
- 412 Dairy Goat - Yearling Doe (born last year)
- 413 Dairy Goat – Buck (born in current year)
- 414 Dairy Goat – Doe in Milk (3 years old and younger)
- 415 Dairy Goat - Dry Doe (3 years old and younger)

Blue Ribbon - \$1.00

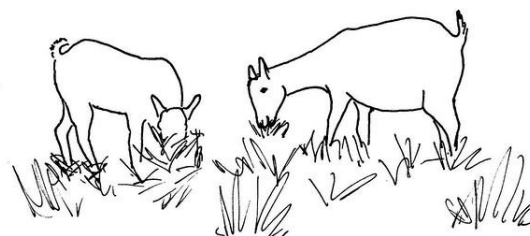
Red Ribbon - \$.75

White Ribbon - \$.50

(Exhibitor must enter lot based on age before September 1, 2024)

#### Class

- 416 Pre-Junior Dairy Goat Showmanship (8 and under)
- 417 Junior Dairy Goat Showmanship (9 to 12)
- 418 Senior Dairy Goat Showmanship (13 to 18)



## Division 5 - 4-H and FFA Beef Cattle

Blue Ribbon - \$5.00

Red Ribbon - \$3.50

White Ribbon - \$2.50

### Class

- 501 Pre-Junior Beef, Heifer (2025 calf) Exhibitors 8 years of age and under.
- 502 Pre-Junior Beef, Steer (2025 calf) Exhibitors 8 years of age and under.
- 503 Breeding Heifer Calf, (2025 calf)
- 504 Feeder Steer, Calf (2025 calf)
- 505 Beef Breeding Heifer, any breed
- 506 Beef Cow with Calf (Animal shown by individual in previous years)
- 507 Market Beef, Steer or Heifer

Blue Ribbon - \$1.00

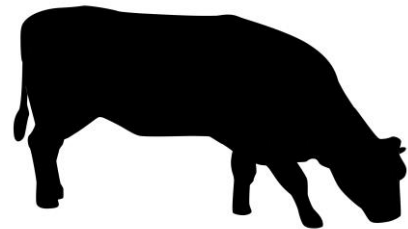
Red Ribbon - \$.75

White Ribbon - \$.50

(Exhibitor must enter lot based on age before September 1, 2024)

### Class

- 508 Pre-Junior Beef Showmanship (8 and under)
- 509 Junior Beef Showmanship (9 to 12)
- 510 Senior Beef Showmanship (13 to 18)



## Division 6 - 4-H and FFA Dairy Cattle

Blue Ribbon - \$5.00

Red Ribbon - \$3.50

White Ribbon - \$2.50

### Class

- 601 Pre-Junior Dairy (2025 calf) Exhibitors 8 years of age and under.
- 602 Heifer Calf, 1 to 11 months, any breed
- 603 Breeding Heifer, 12 to 17 months, any breed
- 604 Breeding Heifer, 18 to 24 months, any breed
- 605 Dry Cow, over 24 months of age
- 606 Lactating Cow, over 24 months of age

Blue Ribbon - \$1.00

Red Ribbon - \$.75

White Ribbon - \$.50

(Exhibitor must enter lot based on age before September 1, 2024)

### Class

- 607 Pre-Junior Dairy Showmanship (8 and under)
- 608 Junior Dairy Showmanship (9 to 12)
- 609 Senior Dairy Showmanship (13 to 18)



# 4-H SMALL ANIMALS

## Poultry, Rabbits, Dogs, Cats, Pets

Enter in the Small Animal Building

Blue Ribbon - \$1.00   Red Ribbon - \$.75   White Ribbon - \$.50  
Champion - \$3.50   Reserve Champion - \$2.25   Honorable Mention - \$1.75  
An Overall Senior & Junior Award will be given in  
Poultry & Showmanship  
Rabbits & Showmanship  
Pets

1. Long sleeved shirt is recommended when showing rabbits and poultry.
2. Live rabbits, poultry and pets shown. All rabbits, poultry and pets exhibited must be healthy. Any rabbits, poultry and pets that do not appear healthy will be removed. Pens are available at the Small Animal Building.
3. Exhibition/Show Poultry Guidance  
If you are planning on exhibiting birds in North Dakota, you have one of these choices:
  1. Originate directly from a National Poultry Improvement Plan (NPIP) certified flock  
Or
  2. Test negative to S.pullorum within 90 days prior to the exhibition  
Or
  3. Have been purchased from a NPIP sources and be accompanied by a Poultry Exhibition Statement of Origin form SRN 60329.

Chicken, turkeys, and game birds, except baby poultry, must be individually identified with a leg or wing band with ID number.
4. **Exhibitors must provide care of their animals exhibited from entry until release at the end of the fair. Feed should not be stored in the Small Animal Building.**
5. All pets (cats and dogs) should have vaccination records up to date.
6. Selling rabbits and poultry:
  - **No** exhibitor 8 years of age and under can sell their rabbits or poultry.
  - **No** premium money is paid to animals that are sold.
  - **No** white ribbon animals can be sold.
  - Only market animals can be sold.
  - It will be left up to the exhibitor if he or she wishes to sell their rabbits or poultry.
  - If an animal is resold during the livestock sale, the money from the resale must be donated to the Grant County Fairboard.

7. **Projects listed in this section will be judged on Thursday, August 14 at 5 pm MT. Enter and Registration will be done at 4:30 pm MT at the Small Animal Building. The day of the show you will be able to drop, but not add.**

**Show order:**

**Division 9 – Dog** – Your dog

**Division 7 – Pets** – Cavies, Hamsters, Gerbils, Other Pets, Cage Birds

**Division 8 – Cats** – Your cat

**Division 10 – Rabbits** – Breeding, Market and Senior & Junior Showmanship

**Division 11 – Poultry** – Breeding Bantams, Chicken Breeding Standard, Chicken Egg Production, Chicken Market, Turkeys, Geese, Ducks, Guinea, Pigeons and Senior & Junior Showmanship

8. Exhibitors must be present during judging. Animals will be brought to the table for show.
9. **If anyone is late or not there when his or her class is being judged that class will not be reopened.**
10. Exhibitors who do not follow the exhibit rules will be dropped one (1) ribbon placing.
11. Absentee Interview Judging sheets are to be used only if the 4-Her cannot be present at Interview Judging. The 4-Hers using this form will not be eligible for Grand and Reserve Champion. It must be signed by the leader and permission given by leader or office. Members who do not use the Absentee Interview Judging sheet or who bring projects and then do not show up for Interview Judging will be dropped one (1) ribbon placing.
12. All exhibits must remain on display until 2:30 pm MT Saturday, August 16. If projects are taken out of the building before 2:30 pm MT, or you do not go through the check-out line on Saturday, no premiums will be paid. Any exhibits left after 4:00 pm MT on Saturday, members premiums will be forfeited.

## **Division 7 - Pets**

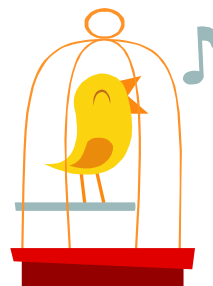
**Small, domesticated animals raised and cared for that are not listed in any other category. Includes cavies (guinea pigs), fish, reptiles and other small, domesticated animals kept as pets, including extra small birds.**

1. Pets should have vaccination records up to date.
2. **Pets will be entered, shown, and judged on Thursday, August 14 at 5 pm MT. After judging, pets should be taken home.**

Limit 2 entries

**Class**

- 701 Cavies (Guinea Pigs)  
702 Hamsters  
703 Gerbils  
704 Other Pet (Lizards, Turtles, Fish, etc.)  
705 Cage Birds (Canaries, Parakeets, etc.)  
706 Llama/Alpaca (Domesticated camelid)



## Division 8 - Cat

**Domesticated feline animals most commonly referred to as house cats.**

1. Cats should have vaccination records up to date.
2. Only cats can be exhibited that have been fed, trained, and cared for by 4-H members enrolled in the project.
3. Cats must be shown by 4-H members who enter the animals.
4. All cats must be on a leash or in a pet carrier.
5. **Cats will be entered, shown, and judged one day only on Thursday, August 14 at 5 pm MT. After judging, cats should be taken home.**

Limit 2 entries.

### Class

801 Cat

## Division 9 - Dog

**Domesticated canine related to foxes and wolves and raised in a wide variety of breeds.**

1. Only dogs can be exhibited that have been fed, trained, and cared for by 4-H members enrolled in the project.
2. Dogs must be shown by the members who enter the animals.
3. All dogs must be on a leash.
4. Dogs should have vaccination records up to date.
5. **Animals will be entered, shown, and judged on Thursday, August 14 at 5 pm MT. After judging, dogs should be taken home.**
6. Please refer to page 18 in the fairbook Hints for showing a dog at the county fair and the Grant County Dog 4-H Program guidelines handout.

Limit 2 entries.

### Class

901 Senior Dog Showmanship  
902 Junior Dog Showmanship  
903 Dog Obedience Class



## **Hints for showing a cat at the county fair.**



For all ages:

1. Cat fur cleaned, brushed, free of dirt (do not have to bathe).
2. Clean inside ears with rag (no further than you can easily see in).
3. Clean around eyes.
4. Make sure long-haired cats are free of matts.
5. Have your cat calm and relaxed. If your cat is not used to people or dogs, spend the time this summer trying to get him/her around more people so it can learn to relax and not be so terrified. Maybe try to get together with a few other members showing pets so your animals can get used to each other before the fair. Also spayed and neutered animals are known to be calmer, laid back so if you do not intend on breeding them, getting them fixed may help their attitudes!
6. Know the difference between spaying and neutering (which for boys, which for girls).
7. Know the shots your cat has had or should have for its age.
8. Be able to tell the judge what breed your cat is (or if you have no idea be able to name a breed it might be by how it looks, googling "cat breeds" will give you lots of pictures to compare with).
9. Know what you feed your cat – food, water, snacks.
10. Have your cat used to its collar and leash/harness and leash so it isn't fighting it during the show.
11. Try not to have to hold your cat during the show (but do not let go of its leash!!)

For showman who have been in the project for 3-4 years and up:

1. Be able to show some of the things the vet looks for in an exam. Looking at the teeth, eyes, ears, tail, paws, feeling the back and stomach, and have some ideas of what we are looking for with each of these, some examples would be broken teeth, runny eyes, ear mites, fleas in the fur, sores, or skin lesions over the back or stomach, lumps or bumps, broken tail, etc.
2. Know some common diseases and parasites in cats (and even some uncommon ones if you like, but know more than just the name – know what it is, how it is caused, how to prevent or cure)
3. Know gestation length.
4. Know other breeds of cats and what they look like.
5. Know some about your cat's nutrition needs – protein requirements/amount in their food, how much they are fed, etc.
6. If your cat has made several trips to the Fair, it should be able to sit relaxed on the table and not try to get to the other animals on the table and not trying to jump off (this will take lots of practice).
7. If your cat has learned any tricks, do not be afraid to ask the judge, if you may show them!



### **Hints for showing a dog at the county fair.**

For all ages:

1. Dog fur cleaned, brushed, free of dirt, bathed.
2. Clean inside ears with rag (no further than you can easily see in).
3. Clean around eyes.
4. Make sure long-haired dogs are free of matts.
5. Have your dog calm and relaxed. If your dog is not used to people or other dogs, spend the time this summer trying to get him/her around more people and animals so it can learn to relax and not become overly excited. Maybe try to get together with a few other members showing pets so your animals can get used to each other before the fair. Also spayed and neutered animals are known to be calmer, laid back so if you do not intend on breeding them, getting them fixed may help their attitudes!
6. Know the difference between spaying and neutering (which for boys, which for girls).
7. Know the shots your dog has had or should have for its age.
8. Be able to tell the judge what breed your dog is (or if you have no idea be able to name a breed it might be by how it looks, googling "dog breeds" will give you lots of pictures to compare with).
9. Know what you feed your dog – food, water, snacks.
10. Have your dog used to its collar and leash/harness and leash so it is not fighting it during the show. Also make sure to use either nylon or leather 4–6-foot leash. Do not use retractable leashes or long leashes that you must wrap around your hands, do not use cotton rope either, can hurt your hands if your dog takes off all the sudden.
11. Try to have your dog sit beside you during the show (but do not let go of its leash!!)
12. Have your dog know the sit command.
13. If possible, work on stay, come, and heel commands with your dog.

For showman who have been in the project for 3-4 years and up:

1. Be able to show some of the things the vet looks for in an exam. Looking at the teeth, eyes, ears, tail, paws, feeling the back and stomach, and have some ideas of what you are looking for with each of these, some examples would be broken teeth, runny eyes, ear mites, fleas in the fur, sores, or skin lesions over the back or stomach, lumps or bumps, broken tail, etc.
2. Know some common diseases and parasites in dogs (and even some uncommon ones if you like, but know more than just the name – know what it is, how it is caused, how to prevent or cure)
3. Know gestation length.
4. Know other breeds of dogs and what they look like.
5. Know some about your dog's nutrition needs – protein requirements/amount in their food, how much they are fed, etc.
6. If your dog has made several trips to the Fair, will it be able to sit relaxed next to you and not try to get to the other animals around them and not trying to jump on you (this will take lots of practice).
7. If your dog has learned any tricks, do not be afraid to ask the judge if you may show them!
8. Be able to tell the judge about any injuries, surgeries, or illnesses your dog has had while you have had him, know what caused it, how to prevent it or take care of it.



## Division 10 - Rabbits

Any of several small, domesticated mammals related to ordinary hares.

Please refer to the North Dakota 4-H Livestock Showmanship Guide on Fitting and Showing Rabbits on page 34-43.

Total of 4 entries

### Breeding

#### Class

- 1001 Junior Doe, 3 to 5 months
- 1002 Junior Buck, 3 to 5 months
- 1003 Intermediate Doe, 6 to 8 months
- 1004 Intermediate Buck, 6 to 8 months
- 1005 Senior Doe, more than 8 months
- 1006 Senior Buck, more than 8 months



### Market

#### Class

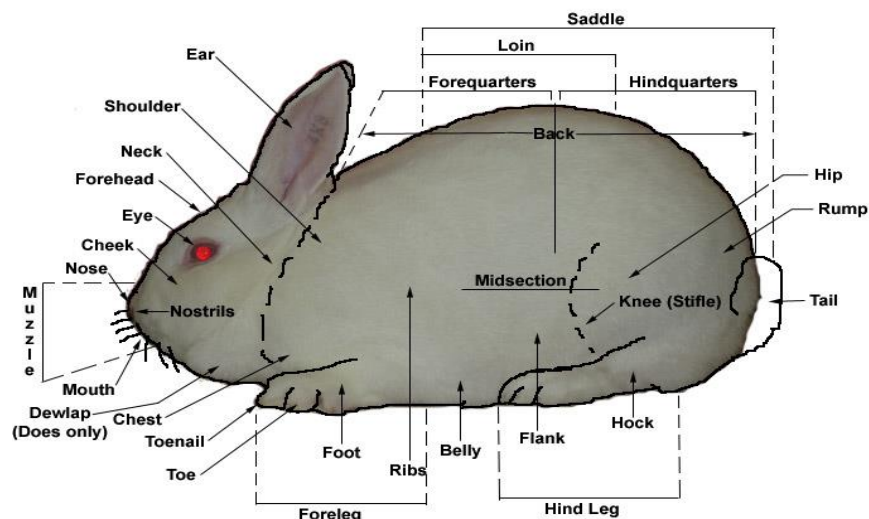
- 1007 Individual Small fryer, 2½ to 4 pounds, up to 65 days
- 1008 Pen of three small fryers, 2½ to 4 pounds, up to 65 days
- 1009 Individual Large fryer, 4 to 5½ pounds
- 1010 Pen of three large fryers, 4 to 5½ pounds
- 1011 Individual Roaster, more than 5½ pounds, less than 8 months
- 1012 Individual Stewer, more than 5½ pounds, more than 8 months

### Showmanship

(Exhibitor must enter lot based on age before September 1, 2024)

#### Class

- 1013 Senior Rabbit Showmanship (13 to 18)
- 1014 Junior Rabbit Showmanship (under 12)



## **Division 11 - Poultry**

Domestic birds, chickens, pigeons, waterfowl, and other warm-blooded feathered animals. This project includes poultry science which is the discipline of domesticated birds kept for eggs or meat and embryology which is the branch of biology dealing with poultry embryos and their development. Eggs are to be from your production in the poultry project.

Please refer to the North Dakota 4-H Livestock Showmanship Guide on Fitting and Showing Poultry on page 27-33.

Total of 4 entries.

### **Chicken – Breeding Bantams**

#### **Class**

- 1101 Cockerel
- 1102 Pullet
- 1103 Trio of young birds – one male, two females (same breed)
- 1104 Cock, more than 1 year old
- 1105 Hen, more than 1 year old
- 1106 Trio of birds, more than 1 year old – one male, two females (same breed)

### **Chickens – Breeding Standard Breeds**

#### **Class**

- 1107 Cockerel
- 1108 Pullet
- 1109 Trio of young birds – one male, two females (same breed)
- 1110 Cock, more than 1 year old
- 1111 Hen, more than 1 year old
- 1112 Trio of birds, more than 1 year old – one male, two females (same breed)

### **Chickens – Egg Production**

#### **Class**

- 1113 Three Pullets (same breed)
- 1114 Three Hens, more than 14 months of age (same breed)

### **Chicken – Market**

#### **Class**

- 1115 Three lightweight chickens, less than 4 months of age, under 5 pounds each (same breed)
- 1116 Three heavyweight chickens, less than 4 months of age, more than 5 pounds each (same breed)



## **Division 11 - Poultry - continued**

### **Turkeys**

#### **Class**

- 1117 Male
- 1118 Female
- 1119 Breeding Pair (same breed)
- 1120 Market, one bird under 1 year old

### **Geese**

#### **Class**

- 1121 Male
- 1122 Female
- 1123 Breeding Pair (same breed)
- 1124 Market, one bird under 1 year old

### **Ducks**

#### **Class**

- 1125 Male
- 1126 Female
- 1127 Breeding Pair (same breed)
- 1128 Market, one bird under 1 year old

### **Guinea**

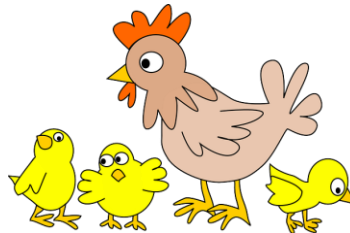
#### **Class**

- 1129 Male
- 1130 Female

### **Pigeons**

#### **Class**

- 1131 Male
- 1132 Female
- 1133 Breeding Pair (same breed)



### **Other Domestic Fowl**

#### **Class**

- 1134 Male
- 1135 Female

### **Showmanship**

(Exhibitor must enter lot based on age before September 1, 2024)

#### **Class**

- 1136 Senior Poultry Showmanship (13 to 18)
- 1137 Junior Poultry Showmanship (under 12)

# Guidelines for Posters

Posters often are used to show what has been learned or how to do something when the item made does not make the best exhibit or display of what was learned. Judges evaluate posters on two aspects: the appearance and the content. Both are considered in the final placing.

## ***Readability***

1. Letters should be read easily.
2. Printing should be consistent with general rules for style, weight, size and case. Hand lettering should conform to a generally practiced style.
3. The title should be in larger lettering than the content.
4. Maximum size of 36 by 48 inches for trifold display boards and 14 by 22 inches posters (one-half sheet of standard poster board). Poster board exhibits may be hung with thumbtacks.
5. Have sufficient space around the edges and between the areas of lettering.

## ***General Appearance***

1. Copy should be brief and appropriately placed, and have comfortable margins.
2. The poster should be illustrated effectively. The illustration should have an appropriate impact.
3. Poster should attract attention. The color should have a pleasing effect.

## ***Message***

1. The message should be appropriate, brief, and clear to the viewer. A single thought should be conveyed.

## ***Materials***

1. The poster should be made on high-quality poster board using good lettering devices or techniques and good-quality poster paints or markers.
2. Three-dimensional items should be attached securely to avoid falling off.

## ***Tips for Effective Posters and Charts***

1. Posters should be easy to read. Words should be spelled correctly.
2. Posters should have a theme; illustrations should emphasize and support the theme.
3. Use different shapes, sizes, and colors.
4. Lowercase letters are easier to read than uppercase letters. A few uppercase letters are all right for emphasis and variety.
5. Posters should be just large enough to carry your message - no larger.
6. Use as few words as possible.

# Animal Science Project Area

Exploration of animal production, domestic animals, and veterinary science.

Enter in the Grant County Fair Building

Blue Ribbon - \$1.00    Red Ribbon - \$.75    White Ribbon - \$.50  
Champion - \$3.50    Reserve Champion - \$2.25    Honorable Mention - \$1.75  
An Overall Senior and Junior Award will be given in this section.

1. Projects listed in this section will be interview judged between 8 am – 11:30 am MT, Thursday, August 14.
2. All exhibits must be made or prepared by the 4-H member, enrolled in the 4-H project during the current 4-H club year. Exhibit must fit the purpose and intention of the project.
3. Please refer to page 22 on Guidelines for Posters.
4. Exhibitors who do not follow the exhibit rules will be dropped one (1) ribbon placing.
5. Exhibitors will be able to sell their static exhibits, if they want, through a silent auction. **No display board or food items will be sold at the silent auction.** The exhibitor will receive a silent auction sheet at check-in on Thursday. After judging the exhibitor will put their exhibit with the silent auction sheet on the table that will be designated for the silent auction. The Silent Auction will start on Thursday at 2 pm – Saturday at 1 pm MT. The person with the top bid will be able to pick up the item on Saturday at 2:30 pm MT.
6. Absentee Interview Judging sheets are to be used only if the 4-Her cannot be present at interview judging. The 4-Her will not be eligible for Grand and Reserve Champion. It must be signed by the leader and permission given by leader or office. Members who do not use the Absentee Interview Judging sheet or who bring projects and then do not show up for Interview Judging will be dropped one ribbon placing.
7. All exhibits must remain on display until 2:30 pm MT Saturday, August 16. If projects are taken out of the building before 2:30 pm MT, or you do not go through the check-out line on Saturday, no premiums will be paid. Any exhibits left after 4:00 pm MT, members premiums will be forfeit.



## **Division 12 – Animal & Meat Evaluation**

Learning about horse judging, livestock evaluation, dairy judging and meat quality evaluation.

Limit 2 entries

### **Class**

- 1201 Beef - create a judging class and a set of reasons.
- 1202 Dairy – create a judging class and a set of reasons.
- 1203 Horse – create a judging class and a set of reasons.
- 1204 Meat - create a judging class and a set of reasons.
- 1205 Sheep – create a judging class and a set of reasons.
- 1206 Swine – create a judging class and a set of reasons.

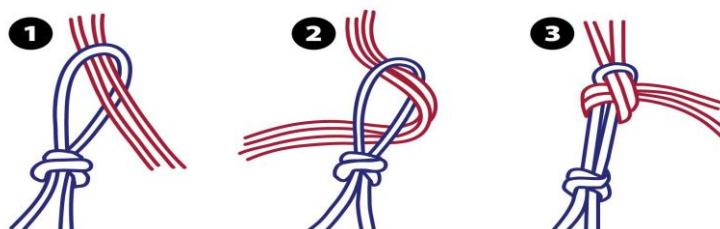
## **Division 13 – Static Exhibits for Animal Science**

Limit 2 entries

### **Class**

- 1301 Cattle, Beef Project – Bovine raised for the efficient production of red meat. Item or display completed for the beef project.
- 1302 Cattle, Dairy Project – Bovine bred and developed for milk production. Item or display completed for the dairy project.
- 1303 Goat, Dairy Project – Goats bred and development for milk production. Item or display completed for the dairy goat project.
- 1304 Goat, Meat and Fiber Project – Goats bred and developed for meat, fiber and hair. Item or display completed for the meat and fiber goat project.
- 1305 Horse Project – Equine breeding, care, training for riding, pleasure and/or draft purposes. Item or display completed for the Horse project.
- 1306 Sheep Project – Small ruminant mammals bred for the production of meat or wool. Item or display completed for the sheep project.
- 1307 Swine Project – Pig or hog bred for the production of meat. Item or display completed for the swine project.

### **How to Correctly Tie a Rope Halter**



## Division 14 – Static Exhibits for Small Animals

Limit 2 entries

### Class

- 1401 Alpaca/Llamas Project – Domesticated camelid. Item or display completed for the Alpaca/Llamas project.
- 1402 Cat Project – Domesticated feline animals most commonly referred to as house cats. Item or display completed for the cat's project.
- 1403 Dog Project – Domesticated canine related to foxes and wolves and raised in a wide variety of breeds. Item or display completed for the dog project.
- 1404 Poultry/Poultry Science/Embryology – Domestic birds, chicken, pigeons, waterfowl and other warm-blooded feathered animals. This project includes poultry science, which is the discipline of domesticated birds kept for eggs or meat, and embryology, which is the branch of biology dealing with the poultry embryos and their development. Eggs are to be from your production in the poultry project. Item or display completed for the poultry project.
- 1404A White chicken eggs, one dozen
- 1404B Brown chicken eggs, one dozen
- 1404C Colored chicken eggs, one dozen
- 1404D Eggs from other poultry, six eggs
- 1405 Rabbit Project – Any of several small, domesticated mammals related to ordinary hares. Item or display completed for the rabbit project.
- 1406 Small Animals/Pocket Pet Project – Small, domesticated animals raised and cared for that are not listed in any other category. Includes cavy (guinea pigs), fish, reptiles and other small, domesticated animals kept as pets, including extra small birds. Item or display completed for the small animals/pocket pet project.

## Division 15 – Veterinary Science

The study of prevention, alleviation of cure of animal diseases and injury.

Limit 2 entries

### Class

- 1501 Veterinary Project – Item or display completed for the Veterinary Project.



# 4-H ENVIRONMENTAL EDUCATION PROJECT AREA

**General studies of human life and its relationship to other life forms on earth.**

Enter in the Grant County Fair Building

Blue Ribbon - \$1.00    Red Ribbon - \$.75    White Ribbon - \$.50  
Champion - \$3.50    Reserve Champion - \$2.25    Honorable Mention - \$1.75  
An Overall Senior and Junior Award will be given in this section.

1. Projects listed in this section will be interview judged between 8 am – 11:30 am MT, Thursday, August 14.
2. All exhibits must be made or prepared by the 4-H member, enrolled in the 4-H project during the current 4-H club year. Exhibit must fit the purpose and intention of the project. No knives or cutting tools should be included with the project. In place of these items provide an index card stating these items were included.
3. Please refer to page 22 on Guidelines for Posters.
4. Exhibitors who do not follow the exhibit rules will be dropped one (1) ribbon placing.
5. Exhibitors will be able to sell their static exhibits, if they want, through a silent auction. **No display board or food items will be sold at the silent auction.** The exhibitor will receive a silent auction sheet at check-in on Thursday. After judging the exhibitor will put their exhibit with the silent auction sheet on the table that will be designated for the silent auction. The Silent Auction will start on Thursday at 2 pm – Saturday at 1 pm MT. The person with the top bid will be able to pick up the item on Saturday at 2:30 pm MT.
6. Absentee Interview Judging sheets are to be used only if the 4-Her cannot be present at interview judging. The 4-Her will not be eligible for Grand and Reserve Champion. It must be signed by the leader and permission given by leader or office. Members who do not use the Absentee Interview Judging sheet or who bring projects and then do not show up for Interview Judging will be dropped one ribbon placing.
7. All exhibits must remain on display until 2:30 pm MT Saturday, August 16. If projects are taken out of the building before 2:30 pm MT, or you do not go through the check-out line on Saturday, no premiums will be paid. Any exhibits left after 4:00 pm MT, members premiums will be forfeit.



## **Division 16 – Energy Project**

Exploration of the basic principles of thermodynamics and physics and how these principles apply to energy use in a variety of settings including home, farm, and transportation. For example, exhibits in solar, wind and biofuels.

Limit 2 entries

### **Class**

1601 Item or display completed for the Energy Project.

## **Division 17 – Entomology/Bee Project**

The discipline of zoology that deals with insects and their habitats including bees and beekeeping, which is defined as breeding bees, especially for honey.

Limit 2 entries.

### **Class**

- 1701 Insect Habitat or other item or display completed
- 1702 Insect collection completed for the project
- 1703 Display or product from the Beekeeping project
- 1704 Other item/display related to entomology

## **Division 18 – Environmental Stewardship Project**

Cultivation of a personal commitment to responsible resource management that contributes to the quality of life for the present and future generations. This relates to knowing about and caring for the environment and applying this concern through responsible action for the rest of our lives, including composting, re-use and recycling.

### **Group 18A - Composting**

*Transformation of organic waste to a useful mulch or soil amendment.*

Limit 2 entries

### **Class**

1801A Item or display completed for composting.

### **Group 18B – Recycling**

*Converting used materials to a new purpose with the goal of reducing energy use, reducing consumption of natural resources, and decreasing waste going to landfills and incinerators.*

### **Required to attach a note card explaining previous and repurposed use.**

Limit 2 entries

### **Class**

1802B Item or display that is recycled or reused materials or scrap pieces.

## **Division 19 – Forests, Rangeland and Wildlife Project**

Studies of renewable natural resources, mostly on non-cultivated and non-urban lands.

### **Group 19A - Forestry**

*Study of forested lands used for timber production, recreation, wildlife habitat and watershed.*

Limit 2 entries.

#### **Class**

1901A Item or display completed for the Forestry project.

### **Group 19B - Range Science**

*Study of wildlands used for grazing of domestic livestock, wildlife habitat, timber, watershed, and recreation. Rangelands are generally too rocky, steep or arid for cultivation.*

Limit 2 entries.

#### **Class**

1902B Item or display completed for Range Science.

### **Group 19C - Wildlife and Fisheries**

*Study of wildlife, birds, and fish species in terms of life history, geographic distribution, biodiversity, habitat, human utility, management and aesthetic values. Includes birds watching, aquarium projects and marine science, which is the discipline relating to sea life and its management.*

Limit 2 entries.

#### **Class**

1903C Item or display completed for Bird watching in North Dakota.

1904C Item or display completed for the Wildlife project.

1905C Item or display completed for the Fishing project.



## **Division 20 – Outdoor Education/Recreation Project**

Projects that involve using and enjoying the natural environment.

1. Do not include knives or cutting tools in the exhibit. In place of these items, provide a photo and an index card stating these items were included in the project.
2. Exhibits may not contain live ammunition or a functional gun, bow or other potentially dangerous weapon.

### **Group 20A - Adventure/Challenge**

*Outdoor activities that challenge the human spirit and body, such as hiking, primitive camping, survival training, orienteering and ropes course.*

Limit 2 entries.

#### **Class**

2001A Camping, hiking or other outdoor adventures demonstrating basic knowledge

### **Group 20B - Hunting and Sportfishing**

*Equipment or activity of hunting wild game and harvesting of fish, especially for food or sport.*

Limit 2 entries.

#### **Class**

2002B Fishing demonstrating basic knowledge and/or application of knowledge.

2003B Hunting demonstrating basic knowledge and/or application of knowledge.

### **Group 20C - Shooting Sports**

*Use of firearms and archery equipment to facilitate personal goal setting, sportsmanship, confidence and safety.*

**Exhibits may not contain live ammunition or a functional gun, bow or other potentially dangerous weapon.**

Limit 2 entries.

#### **Class**

2004C Item or display completed for Shooting Sports project.

2005C Item or display completed for the Archery project.



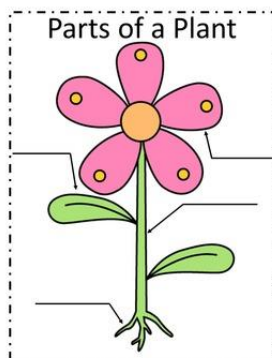
# 4-H PLANT SCIENCE PROJECT AREA

Living fruits, vegetables, crops, herbs, greenery or foliage, trees, vines, shrubs, etc., and the study of plants and how they grow including plant genetics, reproduction, and plant responses to the environment.

Enter in the Grant County Fair Building

Blue Ribbon - \$1.00    Red Ribbon - \$.75    White Ribbon - \$.50  
Champion - \$3.50    Reserve Champion - \$2.25    Honorable Mention - \$1.75  
An Overall Senior and Junior Award will be given in this section.

1. Projects listed in this section will be interview judged between 8 am – 11:30 am MT, Thursday, August 14.
2. All exhibits must be made or prepared by the 4-H member, enrolled in the 4-H project during the current 4-H club year.
3. Please refer to page 22 on Guidelines for Posters.
4. Exhibitors who do not follow the exhibit rules will be dropped one (1) ribbon placing.
5. Exhibitors will be able to sell their static exhibits, if they want, through a silent auction. **No display board or foods items will be sold at the silent auction.** The exhibitor will receive a silent auction sheet at check-in on Thursday. After judging the exhibitor will put their exhibit with the silent auction sheet on the table that will be designated for the silent auction. The Silent Auction will start on Thursday at 2 pm – Saturday at 1 pm MT. The person with the top bid will be able to pick up the item on Saturday at 2:30 pm MT.
6. Absentee Interview Judging sheets are to be used only if the 4-Her cannot be present at interview judging. The 4-Her will not be eligible for Grand and Reserve Champion. It must be signed by the leader and permission given by leader or office. Members who do not use the Absentee Interview Judging sheet or who bring projects and then do not show up for Interview Judging will be dropped one ribbon placing.
7. All exhibits must remain on display until 2:30 pm MT Saturday, August 16. If projects are taken out of the building before 2:30 pm MT, or you do not go through the check-out line on Saturday, no premiums will be paid. Any exhibits left after 4:00 pm MT, members premiums will be forfeited.



## **Division 21 – Agronomy Project**

**Projects related to crops, weeds, pest management, soils and soil conservation.**

1. Exhibits must be prepared by the 4-H members, enrolled in the crop production projects during the current 4-H year.
2. Exhibitors bring your own stand.
3. **Please list the variety name on the exhibit tag.** Your exhibit is an opportunity to teach the public about crops in North Dakota: providing the variety name helps educate.

Limit 2 entries.

### **Group 21A – Crop Production**

*A plant product grown and harvested for profit or consumption.*

#### **Class**

2101A Item or display completed for the Crop Production project

#### **Small Grain Sheaves:**

Small grain sheaves should be stripped of leaves if headed, and roots should be removed. Small grain sheaves should measure 2½ to 3 inches in diameter or 7 to 9 inches in circumference halfway between the butt and the head. Sheaves should be tied firmly and securely in three to four places.

#### **Class**

2102A Sheaf of wheat or durum

2103A Sheaf of barley, oats, rye or other similar cereal grain

2104A Sheaf made of other grass plant species, flax, millet, etc.

#### **Forage Sheaves**

Forage sheaves should be 3 to 4 inches in diameter or 9 to 11 inches in circumference at a point halfway from the base. Tie the sheaf in 2 to 4 places as needed. Legume sheaves are best shown as a fresh (but not wet) sheaf.

#### **Class**

2105A Sheaves made of alfalfa, sweet clover and similar forages

#### **Other Sheaves and Plant Exhibits**

Display with leaves on and roots removed. Tie stems in 3 to 4 places as needed. These sheaves or collections of stalks are best shown in a freshly cut condition.

#### **Class**

2106A Corn, six stalks

2107A Sunflower, six stalks

2108A Sheaves made of soybeans, beans, peas, canola and similar crops, 8 plants

2109A Sugar beets (exhibit 3 beets, cut tops at 1 to 2 inches)

2110A Potatoes – six tubers (field production)

2111A Other crops (not listed above)

### **Group 21B – Harvested Grains**

Entry size is one (1) quart for all classes of harvested grain and seed from the most recently harvested cropping season. Display in a clear, clean zip lock bag.

Limit 2 entries.

#### **Class**

- |       |   |                                      |
|-------|---|--------------------------------------|
| 2112B | Hard Red Spring Wheat                                   |                                      |
| 2113B | Winter Wheat, White Wheat, other wheat types            |                                      |
| 2114B | Durum Wheat   | 2115B Oats                           |
| 2116B | Barley  | 2117B Flax                           |
| 2118B | Rye   | 2119B Sunflowers oil                 |
| 2120B | Sunflowers Non-Oil                                      | 2121B Corn, 1 quart grain or 10 ears |
| 2122B | Beans: Pinto, Navy, Black, other                        | 2123B Canola                         |
| 2124B | Peas, yellow or green                                   | 2125B Soybeans                       |
| 2126B | Chickpeas   | 2127B Lentils                        |
| 2128B | Safflower   | 2129B Millet                         |
| 2130B | Alfalfa   | 2131B Other large seeds crops        |
| 2132B | Other small seeds crops: grass seed, mustard, rape seed |                                      |

### **Group 21C – Pest Management**

*The method of reducing or eliminating any type of unwanted pest in agricultural production.*

Limit 2 entries.

#### **Class**

- 2133C Item or display on pest management.

### **Group 21D – Soils and Soil Conservation**

*Science concerned with the formation, nature, ecology, classification, and conservation of soil.*

Limit 2 entries.

#### **Class**

- 2134D Item or display on soils or soil conservation

### **Group 21E – Weeds**

*Plants that interfere with the growth and production of desirable plants.*

Exhibits in this group may include pressed weed plants mounts, weed seed collections, weed biology posters or anything else not pertaining to weed management. Exhibits related to weed management should be exhibited in pest management class.

Limit 2 entries.

#### **Class**

- 2135E Weed collection.  
2136E Item or display on weeds.

# **Preparing Crop Sheaves and Threshed Grain for Exhibit**

Crop samples make interesting, attractive, and lasting exhibits. High-quality exhibits require time and attention to detail. The exhibitor will learn about the crop by preparing a sample for exhibit.

If your project work is evaluated through an interview judging process, your knowledge about the crop and preparation is part of the determination for your final placing.

The guidelines in this publication can help you in the process of preparing your exhibit.

## **Sheaves**

A well-constructed crop sheaf makes an excellent exhibit. Sheaves may be constructed from small grain, forage, row crops or other crops. The following are general guidelines for constructing crop sheaves. Remember to check the rules for the show in which you plan to enter exhibits for specific requirements.

### **Small Grain Sheaves**

To make attractive small-grain sheaves, select the plants in the field from well-matured standing grain. You may choose immature plants as a second choice if mature plants are not available at the time of the Fair. The plants must be headed. Select plants with large, disease-free, well-filled heads and clean, bright stems. Cut the stems full length.

Spread out the plants in an airy room away from direct sunlight until it is cured (dried). Strip all leaves from the stems, taking care not to break the stem/straw.

When ready to build the sheaf, place a damp cloth over the heads and upper stems to toughen them for the sheaf-building process. Another person working with you will make the construction easier and the sheaf better quality.

To start the sheaf, select 30 to 40 stems and tie them together with cord or electrical tape in several places to form a central core for the sheaf. Then place other stems around the core, with each succeeding head slightly lower to make a large, attractive, rounded bundle of heads.

A sheaf should be at least 2½ inches in diameter (or 7 to 9 inches circumference) about halfway up from the base. The sheaf should be tied firmly and securely in three or four places. To dress up the sheaf, cover the tied areas with colored ribbon or tape. After tying, cut the sheaf even at the base.

When finished, the sheaf should be hung with head down until packed for the show.

A well-built small-grain sheaf will stand by itself but is easily knocked down because it is top-heavy. A sheaf stand may be constructed by putting a very large nail or a pointed ¼-inch wooden dowel through an 8-inch square board as a base.

## **Forage Sheaves**

Forage sheaves, which include grass and legume crops, usually are intended to be exhibited at hay harvest stage. This means a sheaf with emphasis on leaves, green color and early stage of maturity for top-quality hay.

Forages sheaves often are picked fresh and shown green: however, the plants should dry enough so they do not mold while on display. Forage may be cured before building the sheaf, but do not present samples that are excessively dry.

The sheaf should be free of disease, insect, weather or other damage. It should be free of weeds and other foreign material. Select leafy stems and cut close to the ground. Do not strip leaves or branchlets from the stem because forage should retain its color and leaves.

For the sheaf, select those individual stems that have retained the most and best leaves with their color. Forage sheaves should be 3 to 5 inches in diameter (9 ½ to 11 inches circumference) and tie securely at a point one-third up from the base. One or two additional evenly spaced ties may be added to secure the sheaf and prevent spreading. Use tying materials and other preparation guidelines as described earlier for a small-grain sheaf.

## **Other Sheaves**

Generally, select plants that are nearest to maturity. Cut plants as close to exhibit time as feasible to prolong freshness and quality.

Each stem or stalk should be cut to remove roots and to form a sheaf of uniform height. Except as noted, all other parts, including leaves, seeds, or pods, should remain on each plant and be free of disease, insects, and other physical damage. Tie stems or stalks with cord, ribbon, or tape in three. Space the tied areas evenly with each other.

**Large row crops (corn and sunflowers):** Prepare six plants for exhibit. Remove leaves from sunflowers.

**Small broadleaf crops (canola, dry bean, flax, soybeans, etc.):** Prepare sufficient plants so the sheaf has 2.5- to 3-inch diameter (or 7- to 9-inch circumference) at the middle of the exhibit. Remove lower leaves from canola, crambe, flax or safflowers.

# Cleaning a Sample of Threshed Grain for Exhibition

To prepare a sample of threshed grain for an exhibit, follow the steps listed below. Adequate time and paying attention to detail will result in a high-quality sample.

1. **Check the rules or guidelines of the show.** The requirements on the Size of the sample, how the sample is obtained and when the grain was grown may be different for each show.
2. **Generally, the grain is to come from the most recent harvest and be dried for proper storage.** Samples must be from 2024 or 2025 crop.
3. **Each show sets the amount of grain required for exhibit.** Entry size is one (1) quart for all classes of grain.
4. **Obtaining the sample.** Exhibit must be prepared by the 4-H member, enrolled in the 4-H Crop Production project.
5. **Information about the sample.** The exhibitor is expected to know the type of grain and the variety.
6. **Preparing the sample:**
  - A. Start with a sample two to four times the amount required.
  - B. Screen the large sample to remove objectionable matter and obtain uniform seed size.
  - C. Finish picking the sample by hand to remove impurities, damaged seed and nonuniform seed.

## Process

When hand picking a sample, work with good light and use a tool such as a Popsicle stick or small paper card to move small amounts of the grain for closer examination. Remove damaged or discolored seed, seed of other crops or weeds and any other impurities in the sample. Collect the good seed and place it in a container until you have reached the amount required for exhibition.

## Condition

Ideal samples are clean with uniform, plump kernels of good color and are free of musty odors. The sample should not have any sign of mechanical or insect damage, mold, or rot. Also, the sample should not have any small, shriveled, cracked, broken, diseased, dull, or off-color kernels.

## Free of Weed Seeds

The sample should be free of weed seeds and any foreign or inert objectionable materials.

Package the sample for delivery to the show. Bring the sample in a zip lock-type bag (gallon size works well for most samples) and include the exhibit tag completed with the grain variety or hybrid, and other information requested.

## Division 22 – Botany Project

The study of plants and how they grow. This might include plant genetics, reproduction, taxonomy and plant responses to the environment.

Limit 2 entries.

### Class

2201 Item or display completed for the Botany Project.

## Division 23 – Horticulture Projects

Projects related to flowers, indoor plants, fruits, vegetables, ornamental plants and herbs.

1. Your exhibit is an opportunity to teach the public about crops in North Dakota: providing the variety name helps education. **Please list the variety on the exhibit tag.**

2. All produce must be grown or harvested in 2025.

### **Group 23A – Growing Flowers for Containers & Gardens**

*Desirable live plants cultivated for their appearance and/or ornamentation either outdoors, indoors in or out of containers, either as a hobby or business.*

Limit 2 entries

### Class

2301A Poster or folder of flower bed plan, color combinations, description of the project and photos of flower bed.

2302A Cut flowers from your garden, exhibit three (3) of one (1) specie, not in a floral arrangement. **Include name of flower on a card**

2303A Potted plant in appropriate container. **Include the name of potted plant on a card.**

2304A Fairy, dish, or miniature garden. **Include a card with a list of plants used.**

2305A Mixed-container Garden. **Include a card with a list of plants used.**

2306A Item or display completed for this project.

### **Ornamental Horticulture**

*Plants cultivated primarily for landscaping.*

Limit 2 entries.

### Class

2307A Poster or folder of landscaping plan, color combination, description of project and photos of landscaping



## **Group 23B - Gardening**

*Desirable plants cultivated for their production of edible herbs, fruits, flowers or vegetables.*

### **Class**

2308B Item or display completed for Gardening project

1. 4-H members who carry gardening as a project may enter 2 single exhibits or an Education Box of 4 garden vegetables (number of each according to designated lots in the Educational Box column).
2. Harvesting & Preparing Vegetables provides guidelines for your exhibit.
3. Your exhibit is an opportunity to teach the public about crops in North Dakota: providing the variety name helps education.
4. Vegetables will be judged on uniformity, maturity, correct number, and preparation, full size, color and shape, firmness, and whether they are free of damage from insects, disease, or mechanical injury.
5. All produce must be grown or harvested in 2025.

<b>Class</b>		<b>Single</b>	<b>Educational</b>
2309B	<b>Asparagus</b> , including bud at 6 to 8 inches in length, tied two times about 2 inches from top and 2 inches from bottom	6	3
2310B	<b>Beans</b> , green or yellow – calyx attached	12	6
2311B	<b>Beets</b> – tops 1 to 1½ inches long, may wash, leave root	6	3
2312B	<b>Broccoli</b> – remove all leaves below the head, minimum diameter of head 3 inches, stalk and head should be 6 to 8 inches long	1	1
2313B	<b>Cabbage</b> – show with one or two green wrapper leaves, remove loose leaves, trim root smooth with the base of leaves	1	1
2314B	<b>Carrots</b> – 1 to 1½ inches tops, may wash	6	3
2315B	<b>Cauliflower</b> – trim leaves even with outer edge of head, remove older leaves, cut stem 1 inch below base of head	1	1
2316B	<b>Celery</b> – one plant, bunch, trim leaves even with outer edge of head, remove older leaves, cut stem 1 inch below base of head.	1	1
2317B	<b>Cucumber</b> – Pickling – with ½-inch-long stem	6	6
2318B	<b>Cucumber</b> – Slicing – 6 to 8 inches long	3	3
2319B	<b>Dill</b> – trim to a 4-inch stem, tie 3 seed-bearing heads together near lower end of stems and again just below seed heads	3	3
2320B	<b>Egg Plant</b> – leave 1 inch of stem	1	1
2321B	<b>Garlic</b> – 1 inch stem; trim root to 1 inch of bulb	6	3
2322B	<b>Kale</b> – wrap roots in wet paper towel and cover with plastic		
2323B	<b>Kohlrabi</b> – remove root at base, cut off all leaves to 1 to 1½ inches of the bulb	3	3
2324B	<b>Lettuce</b> – remove outer leaves that show yellowing or three leaf lettuce plants, wrap roots in wet paper and cover with plastic	1	1
2325B	<b>Muskmelon</b> – stem removed	1	1
2326B	<b>Onions</b> – green – remove outer covering on bulb, trim tops so overall length is 6 to 8 inches, trim roots to ¾ inch	6	3
2327B	<b>Onions</b> –mature bulbs, any color – show with outer scales on, tops 1 inch long; trim roots to 1 inch in length	6	3
2328B	<b>Parsnip</b> – cut tops 1 to 1½ inch long, leave tap root	3	3
2329B	<b>Peas</b> – with calyx	12	6
2330B	<b>Peppers</b> - any color -leave ½ inch stem	3	3
2331B	<b>Potatoes</b> –any color from the garden – brush or wipe with soft cloth, can be washed but do not scrub	6	3
2332B	<b>Pumpkin</b> – 2- to 3-inch stem attached	1	1

## **Group 23B – Gardening - continued**

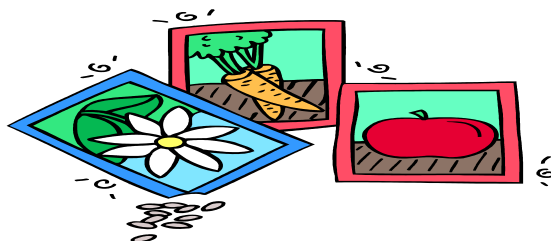
2333B	<b>Radishes</b> – any edible type – show with 1-to 1½ inch tops and tap root	6	3
2334B	<b>Rhubarb</b> – trim so 2 inches of leaf blade remain attached to the stalks, do not remove ends, tie six stalks at both ends	6	3
2335B	<b>Rutabaga</b> – cut tops to 1 to 1½ inches, leave tap roots	3	1
2336B	<b>Spinach plants</b> – washed roots, wrap roots in wet paper and cover with plastic	3	1
2337B	<b>Squash – zucchini type</b> – not more than 8 inches long, stem attached	3	3
2338B	<b>Squash – any other non-zucchini</b> – with 1 inch stem	2	2
2339B	<b>Sweet Corn – Ears</b> – do not remove husks, trim silk to within 1 inch of top husk and trim shank to 1 to 2 inches long	3	3
2340B	<b>Swiss Chard plant</b> – trim older leaves, leave root, wrap root in wet paper and cover with plastic	3	3
2341B	<b>Tomatoes, green or ripe</b> – remove stems	6 large	3 large
2342B	<b>Tomatoes, cherry</b> – remove stems	12 small	6 small
2343B	<b>Turnips</b> – show with 1 to 1½ inch tops, leave tap root	6	3
2344B	<b>Watermelon</b> – with 1 to 1½ inch stem	1	1
2345B	<b>Any other vegetable grown as part of the project</b>		
2346B	<b>Herb garden planted in a container</b>		
2347B	<b>Educational Box of 4 garden vegetables</b> (number of each according to designated lots in the Educational Box column)		

## **Group 23C - Fruits**

Limit 2 entries

### **Class**

- 2348C Apples, six fruits
- 2349C Cherries, 1 pint
- 2350C Crabapples, 12 fruit
- 2351C Gooseberries, one pint
- 2352C Plums, 12 fruit
- 2353C Raspberries, one pint
- 2354C Strawberries, one pint, caps on
- 2355C June berries, one pint
- 2356C Choke cherries, one pint
- 2357C Other fruit grown as part of 4-H project  
(exhibit amount as similar sized fruit above)



# Harvesting and Preparing Vegetables for Exhibit

## General Consideration:

4-H Horticultural and Garden shows are educational by nature. They should inspire project members to grow better quality fruits and vegetables and give pride in the produce grown.

4-Hers are encouraged to exhibit the vegetables they have grown in their garden at local and/or county achievement shows. There are several types of exhibits for garden produce:

1. Entries of single vegetables specimen
2. Entries of a group of vegetable specimen (Educational exhibit)

Please refer to the Gardening section of your fairbook as to the number of specimens of each type of vegetable exhibited.

## ***Tips on Exhibiting:***

### 1. Selecting Vegetables for Exhibit

Select uniform specimens slightly over average size - when possible.

Over-grown specimens are seldom typical and are frequently coarse and lacking in flavor.

Select a few extra specimens above the requirements of the exhibit list for last minute replacements.

Showmanship is important. All items in each entry should be uniform in size, shape, color, and degree of maturity.

Avoid blemishes caused by decay, dirt, disease, insects, or mechanical injury. If blemishes of any kind are severe enough, the exhibit may be disqualified.

### 2. Preparing the Vegetables for Exhibit

Vegetables should be washed only as a last resort. Clean vegetables with a soft brush or facial tissue to remove loose soil.

The tops of all root crops like carrots and beets should be one inch long.

Keep the vegetables as fresh as possible before exhibiting.

## **Garden Produce Standards**

**Specimen:** Uniform, Whole

**Preparation:** Correct number, Manner of preparation, Cleanliness, neatness

**Merits:** Uniformity of size, shape, color, maturity

**Faults:** Wilted, Immature or overmature, Blemishes, Misshapen, Poor color, Insect or disease or mechanical damage

## ***Garden Educational Box Exhibit***

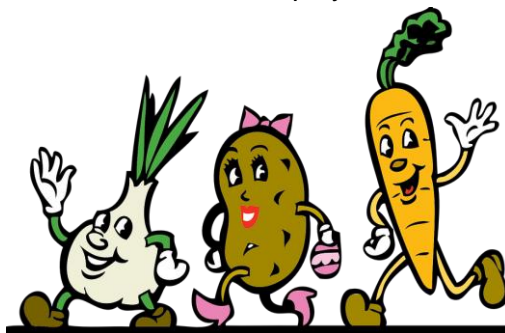
A garden educational box provides each gardener with the opportunity to put together an attractive arrangement of vegetables. The produce needs to be prepared for exhibiting in the same manner as for individual displays.

## Requirements for Educational Box:

1. Each member may enter only one exhibit.
2. Each exhibit should contain 4 different kinds of vegetables:  
Two varieties of squash or two varieties of tomatoes do not qualify as two kinds  
Fruits - apples, plums, raspberries, etc. do not qualify. Gourds are not considered to be a vegetable.
3. Vegetable categories:  
The number of specimens for each kind of vegetable by size category are as follows:  
Large vegetables - one specimen - cabbage, cauliflower, eggplant, head lettuce, melons, pumpkins, rutabagas, squash.  
Medium-sized vegetables - three specimens - beets, carrots, cucumbers (slicing), kohlrabi, onions, parsnips, peppers, potatoes, sweet corn, tomatoes, turnips  
Small-sized vegetables - six specimens - beans (snap), cucumbers (pickling), peas (in the pod)
4. It is suggested that exhibitors choose vegetables from each of the three size categories to add interest to their display. However, the exhibit may contain all kinds of vegetables from the same size category, e.g., cauliflower, a well-colored pumpkin, an eggplant, and a muskmelon (all from the large-size category) could make an attractive four vegetable exhibit.
5. Display the collection in a shallow box approximately the size of a peach crate. Deeper boxes hide the vegetables.  
Line the box with white paper for neatness and uniformity.  
Points will be taken off if the display is decorated in any manner (artificial grass, leaves, decorative basket, etc.)
6. Select vegetables with a variety of shapes, color, texture, and form.

## Standards for Judging

1. Quality of vegetables  
The same basis will be used as for individual specimen displays
2. Cleanliness
3. Showmanship  
This is the arrangement of the vegetables in an attractive manner. Factors include eye appeal, color, texture, shapes.
4. The container itself is not to be judged. A plain container, appropriately lined the box with white paper, will enhance the display.



## **ASPARAGUS**

**Merits** - Straight, dark green spears with tight scales. Free of rust, insect injury or other blemishes.

**Faults** - Crooked, off-color, overmature spears. Blemishes from insects, diseases. Shriveling or wilting.

**Preparation** - Trim to uniform length of 7 to 8 inches. Tie in two places with rubber bands or ribbon.

**Exhibit** - one bunch of 6 spears.

## **BEANS (SNAP)**

**Merits** - Good color, straight, free from defects. Pods fleshy, well filled. True to variety. Uniform. Small seeds. Free from stringiness.

**Faults** - Cracked pods, poor color, seeds too large (overmature), disease, insect or mechanical injury.

**Preparation** - Harvest fresh or place in plastic bag and store in refrigerator until ready for exhibit. Leave calyx attached (stem).

**Exhibit** - 12 pods - single exhibit, 6 pods - educational box

## **BEETS**

**Merits** - Color dark red, globe shape, firm, tender, smooth, 2 to 2½ inches in diameter.

**Faults** - Poor color, misshapen, rough skin, oversize, insect or disease damage.

**Preparation** - Tops 1 to 1½ inches long. Leaves cause wilting of roots. Do not remove tap root. Roots may be washed.

**Exhibit** - 6 specimens - single exhibit, 3 specimens - educational box

## **BROCCOLI**

**Merits** - Head firm, good color, tender and crisp, free of insects. Not showing yellow flowers.

**Faults** - Wilted, poor color, flower open, insect or disease damage.

**Preparation** - Harvest fresh or keep refrigerated until ready to exhibit. Remove all leaves below the head. Minimum diameter of head (or heads) 3 inches. Stalk and head at least 6 to 8 inches long.

**Exhibit** - 1 head

## **CABBAGE**

**Merits** - Heads solid, firm and fresh, free from insect damage, tender and crisp, heavy for size.

**Faults** - Wilted, poor color, flower open, insect or disease damage.

**Preparation** - Harvest fresh or keep refrigerated until ready to exhibit. Remove all leaves below the head. Minimum diameter of head (or heads) 3 inches. Stalk and head at least 6 inches long.

**Exhibit** - 1 head

## **CARROTS**

**Merits** - Smooth, straight, good, bright color, free of cracking, insect and disease damage, free of green or purpling crowns, uniform length and shape.

**Faults** - Too large or too small, crooked, poor color, cracked, green or purple crowns, insect and disease damage, green core.

**Preparation** - Cut tops to 1 to 1½ inches long. Roots may be washed.

**Exhibit** - 6 specimens - single exhibit, 3 specimens - educational box

## **CAULIFLOWER**

**Merits** - White, not rough, and grainy, crisp, solid "Jacket" leaves, fresh and with good color, free from insects.

**Faults** - Poor color (yellowish), grainy, wilted, insect and disease damage.

**Preparation** - Trim jacket leaves even with top of head. Some of the older leaves may be removed.

**Exhibit** - 1 head

## **CELERY**

**Merits** - Crisp, thick, free of insect, disease or mechanical injury.

**Faults** - Wilted, small size stalks, blemishes, poor color.

**Preparation** - Cut roots even with stalk. Trim leaves uniformly. Refrigerate until ready to exhibit.

**Exhibit** - 1 bunch

## **CUCUMBERS**

**Merits** - Straight, dark green color, free of "warts", uniform in diameter from stem to blossom end.

**Faults** - Oversize, yellowish color, overmature.

**Preparation** - With stems ½ inch long on pickling cucumbers only, wipe clean. slicing, 6-8 inches in length

**Exhibit** - 6 specimens of pickling cucumbers, 3 specimens of slicing cucumbers.

## **Dill**

**Merits** - Good color, mature, ready to use.

**Faults** - Immaturity, small size

**Preparation** - Cut seed heads with 10–12-inch stems. Tie near lower end of stems and again just below seed heads.

**Exhibit** - 3 heads - single exhibit, 3 head - educational exhibit

## **EGGPLANT**

**Merits** - Firm, medium to large size, uniformly purple, small blossom scar, fresh green calyx.

**Faults** - Too small, bronze or green color, dried calyx, immature.

**Preparation** - Use thumb pressure to determine maturity. One inch of stem attached. Large to medium size.

**Exhibit** - 1 specimen

## **KOHLRABI**

**Merits** - 1½ to 3 inches in diameter, tender, good color, free of insect, disease and weather damage.

**Faults** - Too large, tough, poor color, weather or pest damage.

**Preparation** - Cut tops at base. Remove stem and root at base.

**Exhibit** - 3 specimens

## **LETTUCE - HEAD**

**Merits** - Fresh, crisp, well-colored leaves. Head should be large and firm.

**Faults** - Wilted, yellowed leaves, insect damage, seed stalk.

**Preparation** - Harvest fresh or place in plastic bag and store in refrigerator until ready to exhibit. Remove older outer leaves that show yellowing.

**Exhibit** - 1 head of head lettuce

## **MUSKMELON**

**Merits** - Medium to large size, smooth stem end, good color for variety, fragrant, free from decay spots. (Judge should have privilege of sampling melon.)

**Faults** - Rough stem, poorly colored, bruises or decay spots, insect damage, over or under ripe.

**Preparation** - Do not wash.

**Exhibit** - 1 specimen

## **ONIONS (DRY)**

**Merits** - Firm, mature, well-shaped, free from sunscald, doubles and splits. Small neck that is well dried. Free from insect, disease and mechanical damage. Heavy for size, good color.

**Faults** - Peeled bulbs are a common fault. (White under skin should not be exposed.) Immature, misshaped, double or split bulbs, large, soft neck. Poor color, size and finish. Disease, insect or mechanical injury.

**Preparation** - Remove no more than one layer of skin to clean. Best if no skin is removed. Do not cut tops so low that bulb is injured. Leave tops 1 inch long. Do not wash. Trim roots of 3/4 inch. Do not trim roots closely or bulb may be damaged.

**Exhibit** - 6 specimens - single exhibit, 3 specimens - educational box

## **ONIONS (GREEN)**

**Merits** - Up to 1/2 inch in diameter, straight, white stem and dark green leaves. Bulbs not enlarged. Even length. Table ready.

**Faults** - Too small or too large, crooked, poor color, dry or discolored leaves.

**Preparation** - Trim tops to an even length, overall length of onions exhibited 6 to 8 inches.

**Exhibit** - 6 onions - single exhibit, 3 onions - educational box

## **PARSNIPS**

**Merits** - Clean, clear color, well-tapered root, free of blemishes. Medium to large size, absence of side roots or branching.

**Faults** - Poorly colored, crooked, misshapen roots, blemished, too small.

**Preparation** - Cut tops to 1 to 1½ inches length, do not trim off lower portion of tap root.

**Exhibit** - 3 specimens

## **PEAS**

**Merits** - Bright green, well-filled pods. Table-ready, uniform size and shape.

**Faults** - Poorly filled pods, off color, seeds past best stage for use, blemished.

**Preparation** - Leave calyx on (stem).

**Exhibit** - 12 pods - single exhibit, 6 pods - educational box

## **PEPPERS**

**Merits** - Large and uniform in size, dark green color, crisp, absence of blemishes, insect, disease and mechanical damage. Smooth.

**Faults** - Badly misshapen, rough, too small, off color or wilted. Sunscald, mechanical injury, insect or disease damage.

**Preparation** - Size is of considerable importance. Leave stem 1/2 inch long.

**Exhibit** - 3 specimens

## **POTATOES**

**Merits** - Firm, medium size, clean. Mature, free of insect damage or mechanical injury. Typical shape and color for variety.

**Faults** - Mechanical injury, unusually deep eyes for variety. Poor color. Sunburn. Hollow heart. "Skinning" of immature tubers.

**Preparation** - Brush or wipe off with soft cloth. Can be washed but do not damage skin.

**Exhibit** - 6 specimens - single exhibit, 3 specimens - educational box

## **PUMPKIN AND SQUASH**

**Merits** - Good weight for size, good clear color. Unblemished from insects and diseases.

**Faults** - Too small, immature, stems removed. Color and shape not typical of variety.

**Preparation** - Exhibit with 2 or 3 inches of stem attached. Summer squash should have soft rind and be in eating state (not over 8" long). Pumpkin and winter squash have hard rind.

**Exhibit** - 3 specimens – single exhibit, 1 specimen – educational box

## **RADISHES**

**Merits** - Fresh, firm, crisp, good color, smooth and free of blemishes.

**Faults** - Spongy, wilted, poorly colored, rough.

**Preparation** - Leave 1 to 1½ inch tops. Wash and tie six roots per bunch. Harvest fresh or refrigerate until ready to exhibit. Red and white radishes should be in separate classes.

**Exhibit** – 1 bunch of 6 radishes single exhibit, 3 radishes in a bunch educational box

## **RHUBARB**

**Merits** - Young, tender stalks, good color, free of blemishes, straight, uniform size.

**Faults** - Tough, overmature (coarse), poorly colored stalks. Lower end of stalks cut.

**Preparation** - Pull, do not cut stalks. Trim leaves so only 2 inches of leaf blade remain attached to stalk. Tie 6 stalks at both ends and in the center.

**Exhibit** – 6 stalks – single exhibit, 3 stalks – educational box

## **RUTABAGA**

**Merits** - Good color, firm, smooth, free of side roots, baseball size or larger, free of insect, disease or mechanical injury, uniform in size and color.

**Faults** - Poorly colored, soft and spongy, too small, rough, showing insect, disease or mechanical injury.

**Preparation** - Cut tops back to 1 to 1½ inches. Leave 2 inches of tap root.

**Exhibit** - 3 specimens - single exhibit, 1 specimen - educational box

## **SPINACH**

**Merits** - Clean, fresh, crisp, well-colored leaves, free of blemishes.

**Faults** - Wilted, poorly colored, insect-damaged leaves.

**Preparation** - Wash roots, harvest fresh or refrigerate until exhibited.

**Exhibit** - 3 plants with roots – single exhibit, 1 plant with roots – educational box

## **SWEET CORN**

**Merits** - Kernels well filled, in milk stage and in even rows. No insect or disease damage. Good color for variety. Fresh husks.

**Faults** - Immature or over mature. Crooked, uneven rows, poor color for variety. Cob not filled to tip. Dried husks. Insect damage.

**Preparation** - Do not remove husk. Corn deteriorates rapidly if husk is removed. Trim silk to within 1 inch of top of husk. Shank 1 to 2 inches long.

**Exhibit** - 3 ears

## **SWISS CHARD**

**Merits** - Clean, fresh, well-colored leaves. Free of insect and disease damage. Bright, tender stems, leaves 8 to 12 inches long.

**Faults** - Wilted, poorly colored, insect or disease damaged leaves.

**Preparation** - Wash and keep fresh by refrigeration. Remove roots from each plant.

**Exhibit** - 3 plants

## **TOMATOES**

**Merits** - Uniform in size and color. Ripe but not overripe. Smooth and well-shaped. Free from cracking, insect, and disease damage. Medium size or larger. Free from sunscald.

**Faults** - Poor color, sunscald, too large or small. Misshapen. Insect or disease damage. Overripe, which causes softness and “leaky” fruit. Unsightly scars on blossom end, cracks on stem end.

**Preparation** - Harvest fresh or refrigerate before displaying. Remove stems to prevent stem punctures.

**Exhibits** - Single exhibit 6 specimens of large fruit varieties, 12 specimens in the pear and plum (cherry) sort

Educational box 3 specimens of large varieties, 6 specimens of small varieties

## **TURNIPS**

**Merits** - Good color, firm, smooth, free of side roots; medium size (baseball size or smaller); free of insect, disease or mechanical injury, uniform in size and color.

**Faults** - Poorly colored, soft, and spongy, too large, rough, showing insect, disease or mechanical injury.

**Preparation** - Cut tops back to 1 to 1½ inches. Leave tap root.

**Exhibit** - 3 specimens - single exhibit, 3 specimens - educational box

## **WATERMELON**

**Merits** - In best eating stage, medium to large size. (Judge should have privilege of sampling.) Good color, free of blemishes.

**Faults** - Immature or overripe, poor color, misshapen, blemished

**Preparation** - May be washed to remove soil

**Exhibit** - 1 specimen

## Individual Vegetable Judging Card

### **Exhibit Preparation:**

Manner of Preparation (tops, roots, base)	Good	Untrimmed	Too Close	Too Long
--	------	-----------	-----------	----------

Appearance	Good	Blemishes	Dirty	Disease
------------	------	-----------	-------	---------

### **Uniformity:**

Size	Good	Too Large	Too Small
------	------	-----------	-----------

Shape	Good	Variations	Misshapen
-------	------	------------	-----------

Color	Good	Variations	Discolored
-------	------	------------	------------

<b><u>Maturity</u></b>	Ideal	Immature	Overripe
------------------------	-------	----------	----------

<b><u>Freshness</u></b>	Good	Fair	Wilted
-------------------------	------	------	--------

### **Defects or Damage**

Insect	None	Slight	Unacceptable
--------	------	--------	--------------

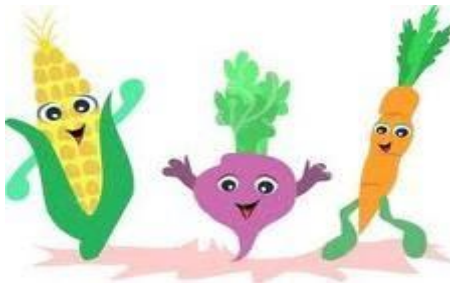
Disease	None	Slight	Unacceptable
---------	------	--------	--------------

Mechanical	None	Slight	Unacceptable
------------	------	--------	--------------

Other Defects	Green Areas	Sunscald	Woody
---------------	-------------	----------	-------

<b><u>Quality</u></b>	Good	Medium	Poor
-----------------------	------	--------	------

<b><u>Disqualified</u></b>	Too many	Too few	Other
----------------------------	----------	---------	-------



# 4-H STEM: SCIENCE, TECHNOLOGY, ENGINEERING, MATH PROJECT AREA

Enter in Grant County Fair Building

Blue Ribbon - \$1.00      Red Ribbon - \$.75      White Ribbon - \$.50  
Champion - \$3.50      Reserve Champion - \$2.25      Honorable Mention - \$1.75  
An Overall Senior and Junior Award will be given in this section.

1. All exhibits must be made or prepared by 4-H members enrolled in that 4-H project during the current 4-H year.
2. Please refer to page 22 on Guidelines for Posters.
3. Projects listed in this section will be Interview Judged between 8 am – 11:30 am MT, Thursday, August 14.
4. Exhibitors who do not follow the exhibit rules will be dropped one (1) ribbon placing.
5. Exhibitors will be able to sell their static exhibits, if they want, through a silent auction. **No display board or food items will be sold at the silent auction.** The exhibitor will receive a silent auction sheet at check-in on Thursday. After judging the exhibitor will put their exhibit with the silent auction sheet on the table that will be designated for the silent auction. The Silent Auction will start on Thursday at 2 pm – Saturday at 1 pm MT. The person with the top bid will be able to pick up the item on Saturday at 2:30 pm MT.
6. Absentee Interview Judging sheets are to be used only if the 4-Her cannot be present at Interview Judging. The 4-Her will not be eligible for Grand and Reserve Champion. It must be signed by the leader and permission given by leader or office. Members who do not use the Absentee Interview Judging sheet or who bring projects and then do not show up for Interview Judging will be dropped one ribbon placing.
7. All exhibits must remain on display until 2:30 pm MT, Saturday, August 16. If projects are taken out of the building before 2:30 pm MT, or you do not go through the check-out line on Saturday, no premiums will be paid. Any exhibits left after 4:00 pm MT, members premiums will be forfeited.



## **Division 24 – Digital Technology Project**

**The branch of scientific or engineering knowledge that deals with the creation and practical use of digital or computerized devices, methods and systems.**

1. For computer exhibits, attach a card with information on software used, an explanation of work completed and what kind of printer (preprogrammed, 3-D printing, etc.) was used. Music and other materials with copyrights may not be used unless permission has been granted and is acknowledged. A copy of permission must be attached to the exhibit.

### **Group 24A – Computer and Digital Technology**

*The applied science and engineering related to or concerned with programmable electronic devices that can store, retrieve, and process data. Includes use and integration of computers and established or emerging digital technologies (QR codes, tablets, smartphone apps, digital game design) as tools for science discovery, engineering design, and 4-H projects. The **Computer Project** involves learning about computer components and operating systems. **Digital Technology** involves learning about the use of electronic devices, software, and digital tools to create a product or perform a task. Products can include 3D printed items, metal art created by a programmed machine, app creation, use of artificial intelligence, etc.*

Limit 2 entries.

#### **Class**

2401A Item or display done by a computer.

2402A Item or display done by Digital technology.

### **Group 24B – GPS/GIS**

*Exhibits related to the use of Global Positioning System/Geographic Information System (GPS/GIS) technologies and skills with application in real world setting to enhance the understanding of our world and solve problems. Includes exhibits related to geocaching.*

1. If the exhibit is a geocache, the cache should be in a durable water-tight container: including a logbook and pencil (also may include trinkets, geo-coins or other trade items) and have a title, teaser description and the geographic coordinates of intended placement. If the site is to be registered with a registry such as geocaching.com, include a printout of its listing.

Limit 2 entries.

#### **Class**

2403B GPS/GIS item or display

### **Group 24C – Robotics**

*Relating to or utilizing devices constructed or working by the methods of physics. This includes design, construction, operation and application of robots and computer systems for their control, sensory feedback, and information processing. Includes drones, and LEGO robotics.*

Limit 2 entries.

#### **Class**

2404C Robotics items or display

## **Division 25 – Engineering Project**

The practice of using science, math and the engineering design process to solve problems.

Limit 2 entries.

### **Class**

2500A Item or display made for the Engineering Project

### **Group 25A – Aerospace Engineering**

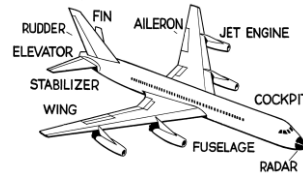
*The branch of engineering that deals with flight, the earth's atmosphere, and space.*

#### **Remove engines from rockets or planes before exhibiting.**

Limit 2 entries.

### **Class**

2501A Item or display made for Aerospace.



### **Group 25B – Chemical Engineering**

*The branch of engineering that deals with the manufacture of products through chemical processes. These products include, among others, pharmaceuticals, pulp and paper, petrochemicals, microelectronic devices, polymers, and products used in food processing and in biotechnology.*

Limit 2 entries.

### **Class**

2502B Item or display made for Chemical Engineering.

### **Group 25C – Civil Engineering and Architecture**

*The branch of engineering dealing with the design and construction of highways, bridges, tunnels, waterworks, harbors, buildings, etc. Includes non-robotic LEGO construction not from a prepackaged kit. (package LEGO kits exhibit in Visual Arts).*

Limit 2 entries.

### **Class**

25403C Item or display made for Civil Engineering and Architecture.

### **Group 25D – Electrical Engineering**

*The branch of engineering that is concerned with the study, design and application of equipment, devices and systems that use electricity, electronics, and electromagnetism.*

Limit 2 entries.

### **Class**

2504D Item or display made for Electrical Engineering.

### **Group 25E – Mechanical Engineering**

*The branch of engineering that specializes in the design, production, and uses of machines. The physics of mechanics is widely used in mechanical engineering. Includes LEGO simple machines.*

Limit 2 entries.

### **Class**

2505E Item or display made for Mechanical Engineering.

## **Division 26 – General Sciences and Math Project**

Study of the physical world.

### **Group 26A – Earth Science - Earth, Water, and Air**

*Studies which address mostly physio-chemical aspects of the environment.*

**Earth:** Lithosphere (geology and minerals: studies of sedimentary, igneous, and metamorphic rocks, minerals, and geologic processes through earth's history).

**Water:** Hydrosphere (studies of the "universal solvent" that makes life possible, including water supply and uses, the water cycle, water conservation and water pollution.)

**Air:** Atmosphere (weather and climate: studies of local or regional atmospheric phenomena occurring over the short-and long-term trends that are expressed as regional climates).

Limit 2 entries.

#### **Class**

2601A Item or display made for Earth

2602A Item or display made for Water

2603A Item or display made for Air

### **Group 26B – Life Science**

*The discipline and knowledge base applied to life and living processes.*

Limit 2 entries.

#### **Class**

2604B Item or display made for Life Science.

### **Group 26C – Mathematics**

*The science of numbers and their operations.*

Limit 2 entries.

#### **Class**

2605C Item or display made for mathematics

### **Group 26D – Physical Science – Astronomy, Chemistry, Physics**

**Astronomy** is the science that deals with celestial bodies.

**Chemistry** is the science that deals with the composition, structure, and properties of substances and of the transformation that they undergo.

**Physics** is the science that deals with matter and energy and their interactions in the fields of mechanics, acoustics, optics, heat, electricity, magnetism, radiation, atomic structure and nuclear phenomena.

Limit 2 entries.

#### **Class**

2606D Item or display made for Astronomy

2607D Item or display made for Chemistry

2608D Item or display made for Physics

## **Division 27 – Industrial Technology Project**

The study related to the design, building and use of engines, machines, and structures.

### **Group 27A – Bicycle**

*Exhibit related to human-powered two-wheeler vehicles.*

Limit 2 entries.

#### **Class**

2701A Item or display made for Bicycle.

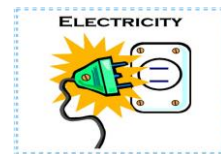
### **Group 27B – Electricity**

*Exhibits related to circuits, wiring and flow of electrical power.*

Limit 2 entries.

#### **Class**

2702B Item or display made for Electricity.



### **Group 27C – Engines, Tractors, and Field Equipment**

*Exhibits related to equipment used for transportation, agricultural production, and lawn or garden applications, including automotive.*

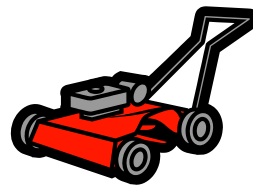
Limit 2 entries.

#### **Class**

2703C Item or display made for an Engine.

2704C Item or display made for a Tractor.

2705C Item or display made for Field Equipment.



### **Group 27D – Welding**

*Exhibits related to building, modifying, or repairing steel-based objects by heating the surfaces to the point of melting using a blowtorch, electric arc or other means, and uniting them by pressing, hammering, etc.*

Welds should not be ground unless needed for functionality.

**No knives or blades may be displayed; instead, a photograph may be used to show the exhibit. Please submit a note with the photograph to explain what was learned.**

Limit 2 entries

#### **Class**

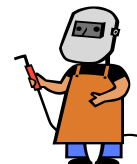
2706D Item or display made with Arc welding

2707D Item or display made with Oxyacetylene welding

2708D Item or display made with Brazing or soldering welding

2709D Item or display made with MIC (metallic inert gas) welding

2710D Item or display made with other types or multiple types of welding



### **Group 27E – Woodworking**

*Exhibits related to the skill of designing, constructing or repairing objects from wood and the activity of becoming familiar with woodworking tools and machines.*

Limit 2 entries.

#### **Class**

2711E Item or display made for woodworking.



## 4-H PERSONAL DEVELOPMENT AND LEADERSHIP PROJECT AREA

Relating to individual influence, excellence, conduct, motives, characteristics, traits, attitudes, or habits along with employability skills.

Enter in the Grant County Fair Building

Blue Ribbon - \$1.00	Red Ribbon - \$.75	White Ribbon - \$.50
Champion - \$3.50	Reserve Champion - \$2.25	Honorable Mention - \$1.75

1. Projects listed in this section will be Interview Judged between 8 am – 11:30 am MT, Thursday, August 14.
2. Please refer to page 22 on Guidelines for Posters.
3. Exhibitors who do not follow the exhibit rules will be dropped one (1) ribbon placing.
4. Exhibitors will be able to sell their static exhibits, if they want, through a silent auction. **No display board or food items will be sold at the silent auction.** The exhibitor will receive a silent auction sheet at check-in on Thursday. After judging the exhibitor will put their exhibit with the silent auction sheet on the table that will be designated for the silent auction. The Silent Auction will start on Thursday at 2 pm – Saturday at 1 pm MT. The person with the top bid will be able to pick up the item on Saturday at 2:30 pm MT.
5. Absentee Interview Judging sheets are to be used only if the 4-Her cannot be present at interview judging. The 4-Her will not be eligible for Grand and Reserve Champion. It must be signed by the leader and permission given by leader or office. Members who do not use the Absentee Interview Judging sheet or who bring projects and then do not show up for Interview Judging will be dropped one ribbon placing.
6. All exhibits must remain on display until 2:30 pm MT, Saturday, August 16. If projects are taken out of the building before 2:30 pm MT, or you do not go through the check-out line on Saturday, no premiums will be paid. Any exhibits left after 4:00 pm MT, member premiums will be forfeit.

---

*“We can do anything we want to if  
we stick to it long enough.”  
Helen Keller*

---

## **Division 28 – Careers Exploration and Workforce Preparation Project**

*Learning about jobs, callings, and professions, as well as the expectations and rewards for each interest, along with workforce preparation and employability skills.*

Limit 2 entries.

### **Class**

2801 Portfolio, report, or display on career investigation completed for two or more careers areas, career shadowing, career analysis study, comparison of colleges or training programs, or job-seeking portfolio.

## **Division 29 – Economics/Business/Marketing Project**

*The study of the principles underlying commerce, merchandising and entrepreneurship.*

Limit 2 entries

### **Class**

2901 Item or display completed for Economics, Business and Marketing.

2902 Entrepreneurship display



## **Division 30 - Leadership**

*The development of qualities necessary to work with and through others to accomplish goals. Includes communication styles, conflict management, decision-making, facilitation, planning, goal setting, problem-solving, inclusion, diversity, and self-confidence.*

Limit 2 entries.

### **Class**

3001 Item or display completed for Leadership project.

## **Division 31 – Personal Development Project**

*Expanding knowledge of self and expanding capabilities, personal growth, increased self-awareness, expanding personal capacity. Include character education and general life skills development.*

Limit 2 entries.

### **Class**

3101 Item or display completed for Personal Development

Enter in the Grant County Fair Building

1. Projects listed in this section will be Interview Judged between 8 am – 11:30 am MT, Thursday, August 14.
2. Please refer to page 22 on Guidelines for Posters.
3. Exhibits should be something that the member has been working on during the year.
4. All exhibits should be clean and neat, and proper labels must be attached securely. It is suggested to protect your exhibits display in a clear plastic bag.
5. Remove baked items from pans. Placed on cardboard or heavy paper plate and place in a sealable plastic bag of appropriate size. Do not frost or glaze cakes, cookies, or brownies. All food exhibits must be safe to eat. Items requiring refrigeration are not accepted. **Required to include a copy of the recipe and site the source.**
6. Exhibitors who do not follow the exhibit rules will be dropped one (1) ribbon placing.
7. Exhibitors will be able to sell their static exhibits, if they want, through a silent auction. **No display board or food items will be sold at the silent auction.** The exhibitor will receive a silent auction sheet at check-in on Thursday. After judging the exhibitor will put their exhibit with the silent auction sheet on the table that will be designated for the silent auction. The Silent Auction will start on Thursday at 2 pm – Saturday at 1 pm MT. The person with the top bid will be able to pick up the item on Saturday at 2:30 pm MT.
8. Absentee Interview Judging sheets are to be used only if the 4-Her cannot be present at Interview Judging. It must be signed by the leader and permission given by leader or office. Members who do not use the Absentee Interview Judging sheet or who bring projects and then do not show up for Interview Judging will be dropped one ribbon placing.
9. All exhibits must remain on display until 2:30 pm MT, Saturday, August 16. If projects are taken out of the building before 2:30 pm MT, or you do not go through the check-out line on Saturday, no premiums will be paid. Any exhibits left after 4:00 pm MT, members premiums will be forfeit.



## **Division 32 - Cloverbuds**

**A clover ribbon will be given in this division, and a premium of \$.75**

Limit 2 entries

**Class**

3201 Item or display completed for Cloverbuds

Caring for a Pet Lesson

*Exhibit Ideas:* Pet Collage, A first-aid kit for your pet, Fleece-tie blanket for a pet, Homemade dog biscuits, Cat or dog toy, Pet place mat

Green and Growing lesson

*Exhibit ideas:* Seed collection, Build a tree – Parts of a tree, Root view cups, Grow a garden glove, Grow a homemade chia pet.

Where in the World? lesson

*Exhibit ideas:* Earth Balloons, How to use a compass, Scavenger Hunt, Using a globe or map, Create Cardinal direction.

Exploring with Electricity lesson

*Exhibit ideas:* Show what you can do with static electricity, Make a snack using electricity, What types of other things use electricity.

Way Cool Science lesson.

*Exhibit ideas:* Bubbling Rocks, Water surface tension, Kissing Fish, Make color dance, Make a constellation viewer, Paint with crystals.

Friends and Me lesson.

*Exhibit ideas:* Draw a picture, Initial towers, Being a good friend, Make a card, Create word art, Make a friendship bracelet.

Setting the Table lesson.

*Exhibit ideas:* Table spelling, Setting the table, Table manners, Folding napkins, Make a tablecloth or placemats, Make a themed centerpiece.

Rooted in Community lesson.

*Exhibit ideas:* Statehood friendship wreath, Community service project, Family chores, Make an emergency contact list.

Cultural Kaleidoscope: American Indians' lesson.

*Exhibit ideas:* Magic cedar basket, Storytelling, Make a good deeds tree, Do a "happy dance", Learn the Lakota language.

Nature Explore lesson.

*Exhibit ideas:* Rainbow hike, Collection of nature items (leaves, pine needles and cones, rocks, etc.), One-yard hike.

Insect Investigations lesson.

*Exhibit ideas:* Build a bug, Insect collection, Ants on a log, Ladybug apples

Printing with Nature lesson.

*Exhibit ideas:* Leaf Rubbing, Nature Printing, Vegetable Printing

Building Works of Art lesson.

*Exhibit ideas:* Create a Kandinsky, Build a Klimt, Design a sketchbook.

Needlepoint on Plastic Canvas lesson.

*Exhibit ideas:* Show how to thread a needle, Basic stitches, Make a set of coasters, Make a needlepoint box.

Textile Creations lesson.

*Exhibit ideas:* Paper bag weaving, Finger knitting, Woven Suns, Make a paper patchwork quilt, Make a kumihimo.

Color Your World lesson.

*Exhibit ideas:* Dip and dry shapes, Tie-Dye, Dye flowers, Marbleizing your paper, How to make natural plant dyes.

Dairy Treats lesson.

*Exhibit ideas:* Instant hot cocoa mix, A dairy treat that you made.

Food Adventurer lesson.

*Exhibit ideas:* Tropical snack, Food group fun dice, Plant herbs or veggies in patio pot or window box, Food safety.

## **COMMUNICATION AND EXPRESSIVE**

# ARTS PROJECT AREA

**Skills of expressing, imparting, and conveying information to others.**

Enter in the Grant County Fair Building

Blue Ribbon - \$1.00      Red Ribbon - \$.75      White Ribbon - \$.50  
Champion - \$3.50      Reserve Champion - \$2.25      Honorable Mention - \$1.75  
An Overall Senior and Junior Award will be given in this section.

1. All exhibits must be made or prepared by the 4-H member, enrolled in the 4-H project, during the current 4-H club year.
2. Exhibits must be cleaned, properly labeled and label must be attached securely. It is suggested to protect your exhibit, display in a clear plastic bag.
3. Please refer to page 22 on Guidelines for Posters.
4. Projects listed in this section will be Interview Judged between 8 am – 11:30 am MT, Thursday, August 14.
5. Exhibitors who do not follow the exhibit rules will be dropped one (1) ribbon placing.
6. Exhibitors will be able to sell their static exhibits, if they want, through a silent auction. **No display board or food items will be sold at the silent auction.** The exhibitor will receive a silent auction sheet at check-in on Thursday. After judging the exhibitor will put their exhibit with the silent auction sheet on the table that will be designated for the silent auction. The Silent Auction will start on Thursday at 2 pm – Saturday at 1 pm MT. The person with the top bid will be able to pick up the item on Saturday at 2:30 pm MT.
7. Absentee Interview Judging sheets are to be used only if the 4-Hers cannot be present at Interview Judging. The 4-Her will not be eligible for Grand and Reserve Champion. It must be signed by the leader and permission given by leader or office. Members who do not use the Absentee Interview Judging sheet or who bring projects and then do not show up for Interview Judging will be dropped one ribbon placing.
8. All exhibits must remain on display until 2:30 pm MT, Saturday, August 16. If projects are taken out of the building before 2:30 pm MT, or you do not go through the check-out line on Saturday, no premiums will be paid. Any exhibits left after 4:00 pm MT, members premiums will be forfeit.



"We could learn a lot from crayons:  
some are sharp, some are pretty,  
some are dull, some have weird names,  
and all are different colors...  
But they all exist very nicely in  
the same box."

**Division 33 – Communication**

## Arts Project

The interchange of thought or information as a verbal or written message.

1. The exhibit may include original works, written material, websites, poster, etc. Choose which method best illustrates what you have learned and achieved.
2. Remember to cite sources for all materials that are not your own such as a photo taken from a website.

Limit 2 entries.

### Class

3300 Item or display for the Communication Arts Project.

### Group 33A – Speaking/Radio/TV

*The study of verbal communication to effectively articulate messages, information and ideas.*

The primary exhibit is a visual display, folder or notebook illustrating what you have learned and achieved. Must be 4-H appropriate topics and actions. No violent actions or language, no profanity, drugs or alcohol in the performance.

Limit 2 entries.

### Class

3301A Item or display for Speaking/Radio/TV.

### Group 33B – Writing/Print

*The study of written communication to effectively articulate messages, information and ideas.*

Define the type of poetry, such as a haiku, limerick, sonnet, etc.

Limit 2 entries.

### Class

3302B Item or display for Journalism, Written Communication/Creative Writing/Poetry

## Division 34 – Performing Arts Project

Forms of creative activity that are performed in front of an audience, such as dance, drama, music.

1. The exhibit must include original works, objects, websites, posters, or sample digital presentations of performances by the exhibitor which may include, but not limited to, recitals, dance, music, vocal, clowning or other performing or theater arts activity. Choose which method best illustrates what you have learned and achieved.
2. The primary exhibit is a visual display, folder, or notebook with printed explanations that will remain on display.
3. You may bring your own electronic device to display for digital presentations at the Fair.
4. Remember to cite sources for all materials that are not your own such as a music score.
5. Must be 4-H appropriate topics and actions. Violent actions or language, profanity, drugs or alcohol are not permitted in the performance.

### **Group 34A – Dance/Movement**

*Rhythmic and harmonized body movement, spontaneous or controlled.*

Limit 2 entries.

#### **Class**

3401A Item or display for Dance/Movement

### **Group 34B – Drama/Theater/Clowning**

*Performance and appreciation of acting. Includes improvisation.*

Limit 2 entries.

#### **Class**

3402B Item or display for this Drame/Theater/Clowning



### **Group 34C – Music/Sound**

*Vocal and instrumental performance, appreciation, or theory.*

Limit 2 entries.

#### **Class**

3403C Item or display for Music/Sound

## **Division 35 – Visual Art Project**

**Visual Arts has the primary intent of expressing emotion or showcasing beauty using line, color, form, pattern, and texture in two and three dimensions.**

All exhibits must be 4-H appropriate. References to profanity, drug, alcohol or violence are not permitted.

### **Class 35A – Arranging Flowers**

*Learning techniques related to aesthetic art of flower arranging. Exhibits may be from fresh flowers, dry or silk materials, or a combination of materials. No potted flowers/plants.*

Limit 2 entries.

#### **Class**

3501A Floral arrangement

3502A Corsage or bouquet

3503A Miscellaneous arrangement

3504A Floral Arrangement, including fairy garden with no live plants



### **Group 35B – Building Plastic Model From a Kit**

*A kit that includes most materials needed to complete the craft.*

Limit 2 entries.

#### **Class**

3505B Item or display completed for Building Plastic Model from a Kit project

## **Division 35 – Visual Art Project - continued**

### **Group 35C - Cake Decorating**

*The art of decorating a cake, cupcakes or cookies for special occasions such as birthdays or weddings.*

Limit 2 entries.

#### **Class**

3506C Decorated Gingerbread House

3507C Beginner Cake Decorating, a single-layer cake or form or 3 cupcakes or 3 cookies using two basic decorating techniques.

3508C Intermediate Cake Decorating, plastic foam 2-layer forms only, using at least two intermediate techniques

3509C Advanced Cake Decorating, plastic foam forms only, stacked or tiered, using at least two advanced techniques.

3510C Master Cake Decorating, plastic foam form only, design your own project using skills learned.

### **Group 35D – Glue Solution**

*The study of types and functions of glue to construct a project. Construction of exhibit using liquid or solid glue forms or materials.*

**Required to include a card identifying the type of glue used and why that type of glue was used for this item.**

Limit 2 entries

#### **Class**

3511D Item made for the Glue Solution project.

### **Group 35E – Jewelry Making**

*Creating ornamental pieces worn for personal decorations or adornment made from a variety of materials including stone, beads, metals, acrylic, clay, crystal, glass, paper, resin, and wood.*

Limit 2 entries.

#### **Class**

3512E Jewelry made by exhibitor

### **Group 35F - Leather Craft**

*Craftmanship in leather; leatherworking, included carving. Item exhibited should be complete.*

Limit 2 entries

#### **Class**

3513F Item made for Leathercraft project

## **Division 35 – Visual Art Project - continued**

### **Group 35G – Metal Arts**

*Original works of decorative or constructed artwork made from manipulating or altering various metals including iron, bronze, lead, silver, gold, etc. Including, but not limited to, laser cutting, soldering/welding, tin punch, engraving, etching, or sculpting. The focus is on the decorative and expressive aspects of the exhibit. No knives or cutting tools should be included. In place of these items, provide a photo and an index card stating these items were included.*

Limit 2 entries.

#### **Class**

3514G Item made for Metal Arts

3515G Other metal art such as blacksmithing, bladesmithing, forging, foundry, etc.

### **Group 35H – Pre-Packaged Craft Kit or Visual Arts (Arts & Crafts)**

*A kit that includes most materials needed to complete the craft. Includes diamond painting, diamond art and LEGO kits.*

*Visual Arts (Arts & Crafts) exhibits that does not fit in any other Communication and Expressive Art Project Area.*

Limit 2 entries.

#### **Class**

3516H Item made from pre-packaged craft kit.

3517H Visual Arts exhibit

*String Art is weaving of colored string, wool, wire or yarn between hammered nails or points to make geometric patterns or representational designs.*

#### **Class**

3518H String Art

### **Group 35I – Scrapbooking**

*A method of preserving, presenting, and arranging personal experiences and memories.*

Limit 2 entries

#### **Class**

3519I Create a Scrapbook, 6 pages minimum, 12 sides front and back

3520I Create a Scrapbook, 10 pages minimum, 20 sides front and back

3521I Create a Digital Scrapbook exhibit, 6 pages minimum, 12 sides front and back

3522I Create a Digital Scrapbook exhibit, 10 pages minimum, 20 sides front and back

### **Group 35J – Wood Arts**

*Wood Arts is decorative not construction.*

*The use of wood to create a decorative or practical object, including carving, sculpting, sanding, painting, varnishing, and wood burning.*

Limit 2 entries

#### **Class**

3523J Item made for Wood Arts project



## **Group 35K – Drawing & Painting**

**Drawing** is the study and application of different drawing media, methods and techniques. **Painting** is the study and use of acrylics, oils, pastel and mixed-media.

1. Exhibit must be original work of the exhibitor. Exhibit a scene, series of drawings, still life, animal(s), abstract, nature, landscape, building or human figures.
2. Print exhibitor's name on the back of the exhibit.
3. Matting is recommended but not required. Please do not frame.  
It is suggested to display your drawing or painting in a plastic bag with zip-type closure.
4. **No** use of copyrighted original works is allowed. Example: cartoon characters, Mickey Mouse, notable artwork



Limit 2 entries.

### **Class**

3524K Drawing

3525K Watercolor Painting

3526K Painting with oils or acrylics

3527K Painting on solid form surface or preformed item (ex. duck decoy)

3528K Mixed-media exhibit

## **Carving and Sculpting**

**Carving** involves using a cutting tool to carve a form out of existing materials such as a bone, mixes media, paper, stone. **Sculpting** involves forming, shaping or manipulating material into an art form. It may or may not involve a cutting tool. (Wood carvings/sculptures exhibit in Wood Arts)(Metal carving/sculptures exhibit in Metal Arts).



Limit 2 entries

### **Class**

3529K Stone, bone carved/sculpted item

3530K Paper carving/sculpture

3531K Mixed-media carving/sculpture

## **Group 35L - Ceramics and Plasterware**

**Ceramic** objects are formed with clay and hardened by firing. **Plasterware** objects are formed with plaster. Decorating and glazing is optional. The bottom seams should be cleaned and finished the same as the whole piece.

Limit 2 entries

### **Class**

3532L Ceramics - poured from a mold

3533L Ceramics – created by hand

3534L Plasterware item

3535L Purchased/pre-cleaned item of clay or plasterware

## **Group 35M - Graphic Arts and Design**

**Graphic art** is a visual art based on line and tone including printmaking, etching and computer graphics. **Graphic design** is a visual communication technique that relies on the creation and use of images and text to represent an idea or convey a message.

Limit 2 entries

### **Class**

3536M Item or display made for Graphic arts

3537M Item or display made for Graphic design

## **Group 35N - Photography**

*Photography is the art or practice of taking and editing photos.*

1. All photos must be taken by the exhibitor. Print your name on the back of each photograph and completed exhibit.
2. 8-by-10-inch photos are required for the enlargement classes. All other photos are recommended to be 5-by-7-inch photos. Original photos exhibited in computer-enhanced class must be 4 by 6 inches.
3. Prints may be cropped to improve composition but must meet sizes indicated above.
4. Exhibits with multiple photos must be mounted on the same board, not to exceed 16 x 20 inches. Please label each photo in the exhibit. (eg 1 of 3, 2 of 3, 3 of 3)
5. **No hangers or frames are allowed. All photos must be in a plastic sleeve or zip-top plastic bag to prevent damage.**
6. **All photos are required to have a photo tag on the back of the photo to provide judges with key information.**  
A label for this information is available at the county extension office.
7. Slight computer editing is permissible with any photo exhibit. For example, cropping, eliminating red eye, and changing the saturation brightness and contrast.

Limit 2 entries

### **Class**

**Photo Story, Collection or Book** – *evaluated from composition, photo quality and impact. Titles and captions are permitted. Photos must be 5 by 7 inches and mounted on the same board, not to exceed 16 by 20 inches. The book may be any size.*

3538N Photo Story is 4 to 6 photographs (examples: before/during/after or same scene, different times, or conditions, etc.)

3539N Photo book

**Enlargement** – *evaluated for esthetics, composition, and impact.*

3540N Enlarged 8-by-10-inch photo – Animal

3541N Enlarged 8-by-10-inch photo – Nature

3542N Enlarged 8-by-10-inch photo – People

3543N Enlarged 8-by-10-inch photo - Structures

**Computer-enhanced photos** – *display of the original 4-by- 6-inche photo and the enhanced and enlarged 8-by-10-inch photo must be mounted on the same board, not to exceed 16 x 20 inches. Describe edits or changes made to photo on the photo tag.*

3544N Before-and-after photo – computer enhanced

# Appropriate Food Exhibits for Fairs

Food and nutrition projects for 4-H exhibits should be prepared with food safety in mind. The importance of food safety cannot be overemphasized. Judges will not evaluate food they consider unsafe, and you do not want the judges to become ill.

## Why are some foods inappropriate for display at Fairs?

Most foods are safe to consume immediately after preparation; others pose unique handling considerations that might be difficult to provide in an exhibit. For example, custards, cream pies, fluid dairy products, egg dishes and meat products require colder storage temperatures than are usually available away from home. Other foods may be unsafe if kept at room temperature for more than two hours.

## Is a food exhibit appropriate? Ask yourself.

1. Does this product require refrigeration? If so, it should not be exhibited.
2. Will this product retain its quality and appearance when evaluated by judges against a standard or when viewed by the public? If not, it should not be exhibited.

## *Acceptable for Fair Display*

All foods must be made from scratch and not from commercial mixes; however, a cake mix can be used as a single ingredient in a recipe with several ingredients.

Questions have been raised about these products, but they are OK:

- Caramel rolls
- Cream cheese mints
- Pineapple upside down cake
- Canned products
  - Must have been preserved in the last 12 months
  - Must be put in a standard canning jar, such as quart, pint, or jelly jar. If canning jars smaller than a pint are used, processing should be done according to pint processing guidelines. A jar ring should remain on the jar.
  - Canned and pickled products, including salsa, vegetables, and meats, must meet the U.S. Department of Agriculture guidelines for recipe and heat processing.
  - Fruits, jams, jellies, and other spreads must use an approved source.
  - Must be labeled with the following information: name of the product, date it was canned, canning method used, processing time, altitude, recipe, and source of recipe.
    - Labels for vegetables, fruits, meats, pickles and mixes also should include the type of pack and pounds of pressure used.
- Pecan/walnut pies OK if: These pies are safe if made from a traditional recipe using eggs, sugars and no added water or milk. Although these are very rich and moist, they are safe because they do not have enough moisture to support bacterial growth. Products made from a nontraditional recipe that includes added water or milk are **not** acceptable.
- Jerky must be stored in an airtight container and be freshly made using a research-tested recipe from an approved source from the USDA. This recipe should have been made within two weeks of exhibiting.

## ***Not Acceptable for Fair Display***

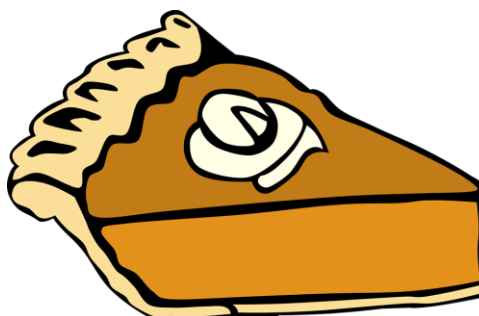
- Any food requiring refrigeration
- Any food containing alcohol
- Breads containing ingredients that normally are refrigerated (such as chopped and dehydrated vegetables, meats, and layers of cheese). A small amount of thinly sliced vegetables may be used as a garnish on top if added before baking.
- Breads, brownies, or cakes baked in a jar or nonfood-grade container, including anything baked in a jar and allowed by vacuum seal.
- Caramel corn or pies baked in a paper grocery bag. Bags are inappropriate cooking containers because the bag may **not** be sanitary, the glue and ink use on the bag have not been approved for contact with food and may give off toxic fumes when heated, the bag may catch fire, and grocery bags made of recycled paper may contain a variety of contaminants that could leach into the food.
- Custard and cream-filled pies, cheesecakes
- Cream cheese as an ingredient in cakes, bars, etc. (Some recipes require refrigeration)
- Flavored oils – Oils infused with herbs or garlic are potential botulism risk. Products made with these oils also are considered unsafe.
- Fresh salsa
- Frosting, icing, glazes on any cake, bars, breads or brownies
- Homemade egg noodles
- Raw egg in any uncooked product
- Sourdough, friendship bread, etc. Although bakery products leavened by wild microorganisms have been used for years, the potential for abuse may result in an unsafe product. Of particular concern are toxins produced by a variety of organisms, including Staphylococcus.
- Sweet rolls with cottage cheese/egg topping – These toppings imply a sugar, egg, cream cheese (or other unripened cheese such as cottage or ricotta cheese) mixture that is protein-rich and moist and can be contaminated easily. Bacteria love high protein, high moisture, and a neutral pH environment.
- Vegetables marinated in oils and herbs – The vegetables could harbor botulism spores. Covering moist vegetables with oil results in anaerobic conditions that may allow botulinum growth.

For specific questions, contact your local NDSU Extension office.

Adapted with permission from Beattie, S., Meimann, E., Bogue, S., and Nelson, D "Inappropriate Food Exhibits from Iowa 4-H Fairs" (2009), Iowa State University, 4-H Youth Development Publications. Book 10

4-H Healthy Lifestyle Committee: Julie Garden-Robinson, Ph. D., Macine Lukach and Callie Johnson

April 2016



# 4-H FOODS, NUTRITION AND HEALTHY LIFESTYLE EDUCATION PROJECT AREA

The study of food and how it works in the body.

Enter in the Grant County Fair Building

Blue Ribbon - \$1.00      Red Ribbon - \$.75      White Ribbon - \$.50  
Champion - \$3.50      Reserve Champion - \$2.25      Honorable Mention - \$1.75  
An Overall Senior and Junior Award will be given in this section.

1. All items must be made by the 4-H member.
2. Remove baked items from pans. Place on cardboard or heavy paper plates and place in a sealable plastic bag of appropriate size.
3. All foods are to be made from scratch. (One ingredient may be a cake mix).
4. Exhibit whole food items unless other specific information is given. Use smaller size pans, when possible, smaller loaf of bread, smaller cake or small pie.
5. **All food exhibits must be safe to eat. Items requiring refrigeration are not accepted.**
6. **Do not frost or glaze breads, cakes, cookies, or brownies. Cut bars in uniform size, about 2-inches square.**
7. Place cakes bottom side up on covered cardboard or paper plate. Do not slice the top of the cake off. Coffee cake may be displayed according to the recipe.
8. **Required to include a copy of the recipe and list the source. Recipes may be taken from any source. Please list any other information you wish to share with the judge on a note card.**
9. Securely fasten exhibit tags to the covering of the products.
10. Please refer to page 22 on Guidelines for Posters.
11. Projects listed in this section will be Interview Judged between 8 am – 11:30 am MT, Thursday, August 14.
12. **Exhibitors who do not follow the exhibit rules will be dropped one (1) ribbon placing.**
13. Exhibitors will be able to sell their static exhibits, if they want, through a silent auction. **No display boards or food items will be sold at the silent auction.** The exhibitor will receive a silent auction sheet at check-in on Thursday. After judging the exhibitor will put their exhibit with the silent auction sheet on the table that will be designated for the silent auction. The Silent Auction will start on Thursday at 2 pm – Saturday at 1pm MT. The person with the top bid will be able to pick up the item on Saturday at 2:30 pm MT.



14. Absentee Interview Judging sheets are to be used only if the 4-Hers cannot be present at Interview Judging. The 4-Her will not be eligible for Grand and Reserve Champion. It must be signed by the leader and permission given by leader or office. Members who do not use the Absentee Interview Judging sheet or who bring projects and then do not show up for Interview Judging will be dropped one ribbon placing.
15. All exhibits must remain on display until 2:30 pm MT, Saturday, August 16. If projects are taken out of the building before 2:30 pm MT, or you do not go through the check-out line on Saturday, no premiums will be paid. Any exhibits left after 4pm MT, members premiums will be forfeit.

## **Division 36 – Baking and Cooking Project**

**Preparation of food and the act of being nourished by wholesome and sustaining food.**

### **Group 36A - Baking – Brownies/Bars/Cookies**

**Required to include recipe and list the source**. Must be safe to eat and exhibited without refrigeration.

Limit 2 entries.

#### **Class**

3601A Brownies, granola, or other bars, four of a kind, unfrosted/unglazed

3602A Cookies, four of a kind, unfrosted/unglazed

### **Group 36B – Baking – Cakes/Cupcakes/Muffins/Pies**

**Required to include recipe and list the source**. Must be safe to eat and exhibited without refrigeration.

Limit 2 entries.

#### **Class**

3603B Muffins, four of a kind (no paper baking liners), unfrosted/unglazed

3604B Angel Food Cake (no box mix) Unfrosted/unglazed

3605B Cake, one layer of a square, oblong, or round, unfrosted/unglazed

3606B Other cakes, including cupcakes without paper liner, sponge cake, jelly roll, etc., unfrosted/unglazed

3607B One pie, single or double crust (no graham crackers crust)



## **Group 36C – Baking – Breads**

**Required to include recipe and list the source.** Must be safe to eat and exhibited without refrigeration.

Limit 2 entries.

### **Class**

- 3608C Rolls or bread sticks, four of a kind, unfrosted/unglazed
- 3609C Loaf of Bread, white or whole grain
- 3610C Other bread, including specialty or nationality bread, one loaf or four of a kind
- 3611C Bread mixed and baked with a machine, one loaf
- 3612C Fruit Bread, unfrosted/unglazed



## **Group 36D – Cooking – Candy/Pies/Advanced Food Skills**

**Required to include recipe and list the source.** Must be safe to eat and exhibited without refrigeration.

Limit 2 entries

### **Class**

- 3613D Candy
- 3614D No-bake products - four pieces
- 3615D Food item made with the microwave
- 3616D Advanced food skills
- 3617D Item or display completed for Cooking



## **Group 36F – Food and Kitchen Safety**

Including equipment basics, knife skills and safe food storage.

Limit 2 entries.

### **Class**

- 3618F Food safety display
- 3619F Kitchen safety display

## **Dangers in the Kitchen**



## **Division 37 – Food Preservation**

**Applying science-based knowledge to prevent deterioration and spoilage of food products.**

1. Canned exhibits must have been preserved in past 12 months. The exhibit must be put in a standard canning jar - such as quart, pint, or jelly jar. If canning jars smaller than a pint is used, processing should be done according to pint processing guidelines. **A jar ring should remain on the jar.**
2. Canned foods must have a label attached to the jar. The label must include name of product, date, method of processing, length of processing time, altitude and your name. Labels for vegetables, fruits, meats, pickles, and mixes also should include type of pack and pounds of pressure used.
3. Tie tags for canned items around the neck of jar
4. Canned goods must follow USDA guidelines. The USDA does not approve of the inversion method of sealing canned goods; therefore, all exhibits must be processed. Tomato products must be made using research-based recipes only (recipes from USDA, or Kerr)
5. **Required to include a copy of the recipe and list the source.**

Limit 2 entries.

### **Group 37A – Canned Jams & Jellies**

#### **Class**

3701A Jams, preserves, Jelly and fruit butters

3702A Cooked reduced sugar fruit spread

### **Group 37B – Canned Pickles & Relishes**

#### **Class**

3703B Pickles, Relishes or non-tomato sauce made with vinegar

### **Group 37C – Canned Fruits**

#### **Class**

3704C Fruits, fruit juice, fruit sauce or syrup

### **Group 37D – Canned Tomato Products**

#### **Class**

3705D Tomato or tomato/vegetable blend juice or tomato products (whole, crushed, sauce, ketchup, or salsa)

### **Group 37E – Pressure Canned Products**

#### **Class**

3706E Jar of pressure canned vegetables, meat, or combination product, such as soup, stew, or spaghetti sauce. Required to include recipe and instructions for cooking or using the product

### **Group 37F - Other Preservation Methods & Display Class**

#### **Class**

3707F Fruit leather or other dehydrated fruit

3708F Dehydrated vegetables or herbs

3709F Jerky and other dehydrated meats

3710F Other dehydrated or freeze-dried products

3711F Display on a food preservation method

## **Division 38 – Food Science Project**

The studies of nutrients in foods that nourish, sustain or supply humankind, including the study of animal tissue used for human consumption. Includes nutrition displays such as MyPlate, food insecurity, food budgeting, measuring basics and food labeling.

**Required to include recipe and list the source.** Must be safe to eat and exhibited without refrigeration.

Limit 2 entries.

### **Class**

3801 Item or display made for Food Science

3802 Item or display made for Nutrition.

## **Healthy Living Project Area**

Studies related to a way of living or state of health for mind and body.

## **Division 39 – Mental and Emotional Health**

Exhibits related to self-understanding, self and stress management, and interpersonal relationships. Could include chemical health defined as the effects of chemical substances on one's physical or mental well-being.

Exhibits including soaps and scented candles intended to promote physical, mental or emotional health.

Limit 2 entries.

### **Class**

3901 Item made or display for Mental and Emotional Health

## **Division 40 – Personal Safety Project**

Exhibits related to being secure or protected from hurt, injury, harm, or loss. Include ATV safety, automotive and bicycle safety, emergency preparedness, tractor safety education, farm safety, chemical/pesticide safety, water safety, snowmobile safety.

Limit 2 entries.

### **Class**

4001 Item made or display for Personal Safety

## **Division 41 – Physical Health Project**

Exhibits related to the body's well-being, maintenance of well-being and learning about and participating in exercise of any kind. Includes fitness and sports, growth development, disease and first aid/CPR.

Limit 2 entries.

### **Class**

4101 Item made or display for Physical Health

4102 A portfolio or display showing what the you has learned or done during the year participating in the Healthy 4-H Club activity.

## Division 42 – Understanding Physical and Intellectual Development Project

*Understanding the spectrum of physical and intellectual development through relating, connecting, and showing compassion for a range of abilities.*

Limit 2 entries.

### Class

4201 Item or display made for Understanding physical and intellectual development

## 4-H FAMILY & CONSUMER SCIENCE PROJECT AREA

Development of consumer orientated, family related skills.

Enter in the Grant County Fair Building

Blue Ribbon - \$1.00      Red Ribbon - \$.75      White Ribbon - \$.50  
Champion - \$3.50      Reserve Champion - \$2.25      Honorable Mention - \$1.75  
An Overall Senior and Junior Award will be given in this section.

1. Articles must be made by the 4-H member, enrolled in that project during the current 4-H year.
2. All exhibits should be clean, neat, and attractive.
3. Exhibit tags should be securely attached to all items.
4. Please refer to page 22 on Guidelines for Posters.
5. Projects listed in this section will be Interview Judged between 8 am – 11:30 am MT, Thursday, August 14.
6. Exhibitors who do not follow the exhibit rules will be dropped one (1) ribbon placing.
7. Exhibitors will be able to sell their static exhibits, if they want, through a silent auction. **No display board or food items will be sold at the silent auction.** The exhibitor will receive a silent auction sheet at check-in on Thursday. After judging the exhibitor will put their exhibit with the silent auction sheet on the table that will be designated for the silent auction. The Silent Auction will start on Thursday at 2 pm – Saturday at 1 pm MT. The person with the top bid will be able to pick up the item on Saturday at 2:30 pm MT.
8. Absentee Interview Judging sheets are to be used only if the 4-Her cannot be present at Interview Judging. The 4-Her will not be eligible for Grand and Reserve Champion. It must be signed by leader and permission given by leader or office. Members who do not use the Absentee Interview Judging sheet or who bring projects and then don't show up for Interview Judging will be dropped one ribbon placing.



9. All exhibits must remain on display until 2:30 pm MT, Saturday, August 16. If projects are taken out of the building before 2:30 pm MT, or you do not go through the check-out line on Saturday, no premiums will be paid. Any exhibits left after 4 pm MT, members premiums will be forfeit.

## **Division 43 – Consumer Education and Money Management Project**

**Projects related to personal money management and wise consumer purchasing.**

Limit 2 entries.

### **Class**

4301 Item made or display for Consumer Education

4302 Item made or display for Money Management



## **Division 44 – Child Development**

**Projects focused on the developing child and care for children including babysitting, parenting, and family life education.**

1. **Required to attach a notecard explaining why the exhibit is appropriate for the age of the child.**
2. **Required if the exhibit includes a game or activity, please include rules or directions on a notecard.**

Limit 2 entries.

### **Class**

4401 Item or display for/about an infant or toddler

4402 Item or display for/about a preschool/kindergarten child

4403 Item or display for/about a school-age child

4404 Item or display for/about a child with special needs

## **Division 45 – Home Environment Project**

**The art and science of understanding people's behavior to create functional living spaces that are aesthetically pleasing.**

1. **Required to attach a notecard explaining what you did and why you changed the design and environment; include details of why your design works for you, the features in it and the type of decor you would use.**

Limit 2 entries.

### **Class**

4501 Folder or display showing room designed by you pre- and post-design.

4502 Item made or display for Home Environment

# 4-H SEWING AND TEXTILES PROJECT AREA

**Projects related to clothing construction, fabric selection and design, including fiber arts.**

Enter in the Grant County Fair Building

Blue Ribbon - \$1.00      Red Ribbon - \$.75      White Ribbon - \$.50  
Champion - \$3.50      Reserve Champion - \$2.25      Honorable Mention - \$1.75  
An Overall Senior and Junior Award will be given in this section.

1. All articles and garments must be made by the 4-H member.
2. **Required to include pattern, instructions or directions and the source of idea.**
3. Exhibits should be clean and pressed.
4. It is suggested to protect your garments, display in a clear garment bag.
5. Please refer to page 22 on Guidelines for Posters.
6. Projects listed in this section will be Interview Judged between 8 am – 11:30 am MT, Thursday, August 14.
7. **Exhibitors who do not follow the exhibit rules will be dropped one (1) ribbon placing.**
8. Exhibitors will be able to sell their static exhibits, if they want, through a silent auction. **No display board for food items will be sold at the silent auction.** The exhibitor will receive a silent auction sheet at check-in on Thursday. After judging the exhibitor will put their exhibit with the silent auction sheet on the table that will be designated for the silent auction. The Silent Auction will start on Thursday at 2 pm – Saturday at 1 pm MT. The person with the top bid will be able to pick up the item on Saturday at 2:30 pm MT.
9. Absentee Interview Judging sheets are to be used only if the 4-Her cannot be present at Interview Judging. The 4-Her will not be eligible for Grand and Reserve Champion. It must be signed by the leader and permission given by leader or office. Members who do not use the Absentee Interview Judging sheet or who bring projects and then do not show up for Interview Judging will be dropped one ribbon placing.
10. All exhibits and plaques must remain on display until 2:30 pm MT, Saturday, August 16. If projects are taken out of the building before 2:30 pm MT, or you do not go through the check-out line on Saturday, no premiums will be paid. Any exhibits left after 4 pm MT, members premiums will be forfeit.



## Division 46 – Sewing and Textiles Projects

Projects related to clothing construction, fabric selection and design, including fiber arts.

A garment is an item of clothing.

A personal accessory is an item used to contribute to a wearer's outfit.

A home accessory is an item used to enhance a room or interior space.

### Group 46A – Displays on Sewing or Textiles

Required to include pattern, instruction or directions and the source of idea.

Limit 2 entries.

#### **Class**

4601A Display/portfolio/folder on clothing, sewing and textiles topics.

### Group 46B – Embellishment/Repurposing

An **embellishment** is added to a garment or accessory to personalize or make it more attractive. **Repurposing** implies the garment, personal or home accessory is given a different purpose than the one originally intended. All accessories must be made with fabric or fibers.

Required to include the directions, pattern, or instructions on how it was embellished or repurposed.

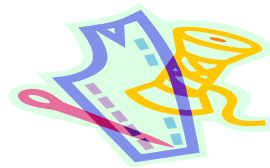
Limit 2 entries.

#### **Class**

4602B Embellished garment or accessory

4603B Embellished home accessory

4604B Repurposed garment or accessory



### Group 46C - Original Design

An original design is created from the exhibitor's own ideas, without use of a provided pattern, and made from textiles.

Required to include directions or instructions on how the design was constructed.

Limit 2 entries.

#### **Class**

4605C Original designed item

### Group 46D - Sewing

A garment, personal or home accessory that is sewn by hand or machine.

Required to include pattern, instructions and source of idea.

Limit 2 entries.

#### **Class**

4606D Garment for you

4607D Garment for someone else

4608D Sewn personal accessory

4609D Sewn home accessory



## **Group 46E – Beginning – Foundations of Sewing & Textiles**

**Required to include pattern, directions or instructions and the source of ideas.**

Limit 2 entries.

### **Class**

4610E Beginning cutting and measuring exhibit (example: tied fleece blanket, simple scarf, hat)

## **Group 46F – Displays on Sewing or Textiles**

Limit 2 entries.

### **Class**

4611F Display/portfolio/folder on clothing, sewing and textiles topic.

## **Division 47 – Fiber Arts**

### **Group 47A - Crochet**

*A fiber art item created by looping yarn with one hooked needle to make a garment or accessory.*

**Required to include pattern and directions and the source of idea.**

Limit 2 entries.

### **Class**

4701A Crochet item

### **Group 47B – Embroidery**

***Embroidery** is the art of decorating a material with needle and thread, and it involves a variety of stitches, embellishments, styles and methods. **Cross-stitch** is a type of hand embroidery that uses the basis X-shape stitch. **Needlepoint** is a surface embroidery technique that covers the top of the fabric or plastic canvas and may use multiple stitch types.*

**Required to include pattern and directions and the source of idea.**

Limit 2 entries

### **Class**

4702B Hand-embroidered item  
4703B Machine-embroidered item  
4704B Needlepoint item on fabric canvas  
4705B Needlepoint item on plastic canvas  
4706B Cross-stitch item



### **Group 47C – Felting**

*The process of producing a textile or fabric by combining and compressing the loose fibers, wool or hair. Needle felting uses a specialized felting needle and wool fibers to create an endless array of shapes and objects.*

**Required to include pattern and instructions and the source of idea.**

Limit 2 entries

#### **Class**

4707C Felting item

### **Group 47D – Knitting**

*A fiber art project created by interlacing yarn or thread in a series of connected loops with a pair of needles to make a garment or accessory.*

**Required to include pattern and instructions and the source of idea.**

Limit 2 entries

#### **Class**

4708D Traditional knit item

4709D Nontraditional knit item (such as arm knitting, finger knitting)



### **Group 47E – Latch Hooking**

*A fiber art in which short segments of yarn are tied to the horizontal stands of a small- or medium-sized canvas grid.*

**Required to include pattern and directions and the source of idea.**

Limit 2 entries

#### **Class**

4710E Latch Hooking item

### **Group 47F – Macrame**

*A fiber art item made by knotting cord or string in patterns to make decorative articles.*

**Required to include pattern and instruction and the source of idea.**

Limit 2 entries

#### **Class**

4711F Macrame item

### **Group 47G - Quilting**

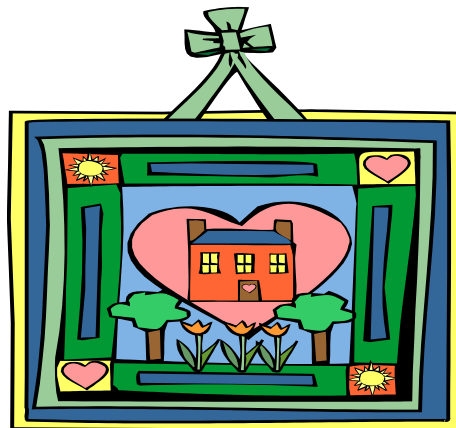
*The process of joining a minimum of three layers of fabric together either through stitching manually using a needle and thread, or mechanically with a sewing machine or specialized longarm quilting system. An array of stitches is passed through all layers of the fabric to create a three-dimensional padded surface. The three layers are typically referred to as the top fabric or quilt top, batting or insulating material and the backing.*

Limit 2 entries.

**Required to include pattern and instructions and the source of idea.**

#### **Class**

- 4712G Quilted item
- 4713G Quilt, quilted
- 4714G Quilted item, tied or finished in other manner
- 4715G Quilted item, professionally quilted
- 4716G Quilted, professionally quilted
- 4717G Quilt, tied or finished in other manner



**I am only one, but still, I am one. I cannot  
do everything, but still, I can do  
something. I will not refuse to do  
something I can do.”  
Helen Keller**

# CIVIC ENGAGEMENT PROJECT AREA

Preparation for roles in society, legal proceedings, public policy and relationships.

## Division 48 – Civic Education (Local, State, National) Project

*Understanding government and active participation in community life and community problem solving.*

Limit 2 entries.

### Class

4801 Item or display made for civic engagement.

## Division 49 – Global and Cultural Education Project

*Project designed to build knowledge and skills related to global and cultural competency, including global/cultural awareness and/or connectedness, language, family traditions, genealogy, and heritage. This division includes Family Story exhibits and addressing community issues such as food insecurity.*

Limit 2 entries.

### Class

4901 Item or display made for Global and Cultural education.

## Division 50 – Volunteerism and Service-Learning Project

***Volunteerism** is learning about the importance and nature of service done of one's own free will for the benefit of others. **Service-learning** is acquiring personal skills and knowledge by servicing others through organized school-based or community-based organized programs. Volunteerism and service-learning include intentional planning followed by persona reflection.*

Limit 2 entries.

### Class

5001 Item or display for volunteerism

5002 Item or display for service-learning project

# GENERAL

Enter in the Grant County Fair Building

Club Displays will not be judged but will receive a premium of \$5.00

1. Projects listed in this section will be entered between 8 am – 11:30 am MT, Thursday, August 14.
2. All exhibits must remain on display until 2:30 pm MT, Saturday, August 16. If projects are taken out of the building before 2:30 pm MT, or you do not go through the check-out line on Saturday, no premiums will be paid. Any exhibits left after 4 pm MT will be forfeit.

**Community Service Display** – a display done on community service that your club has participated in or is an ongoing project of the club. This display can be a booth, poster, booklet, or technology enhanced display.

**Club Project Display** – a display done on a special project area that the club did as a group. (Example: lawn safety, ATV safety). Does not include individual projects. The display can be a booth, poster, booklet, or technology enhanced display.

## FLOATS



First Place - \$25.00  
Second Place - \$15.00  
Third Place - \$10.00

Floats are welcome. There is no fair theme this year.

Parade entry form due August 11<sup>th</sup> to Donna VandenBurg, 315 Morton St, Carson, ND 58529. If you have any questions call 622-3470 or 622-3386.

Entries must be in line by 8:30 am MT north of Courthouse on Morton St & 4<sup>th</sup> Ave in Carson on Saturday, August 16.

Judging will begin at 8:30 am MT, if your entry is not in line, it will not be judged.

Winners will be announced during the parade.

Parade will begin at 9:30 am MT on Saturday, August 16.

# Example of How To Fill Out An Exhibit Tag For the Fair

This tag will be used for all the 4-H exhibits, except for beef, sheep, swine, goats, and dairy.

Project - put the name of the project  
- example -  
*Gardening*

Division: 23

Group: 23B

Class: 2318B

Exhibit: is what your exhibit is -  
example – *Cucumber - Slicing*  
*Variety - Salad Bush*

Name - *your name*

Club - *your club's name*

Age –  
*your age as September 1, 2024*

# Fast Facts for You to be successful during Interview Judging

Sample questions:

1. What did you enjoy about working with this project?
2. Have you taken this project before? What did you learn during those years?
3. What were your goals for this project?
4. What did you learn as you worked with this project?
5. How did you go about making or assembling this exhibit?
6. Did someone help you with your project? Who? How?
7. What were some of the difficulties or problems you had?
8. What would you do differently if you did it again?
9. Approximately how much did this project cost?
10. What are some characteristics of a good exhibit?
11. What do you believe contributed to the success of this project?
12. What other things would you like to do with this project?
13. What are some new things you could learn?
14. Have you helped someone else learn these skills?
15. How will what you learned be helpful in the future?

**If you are nervous before interview judging, try this:**

- ☺ Smile
- ☺ Take a deep breath. Let your breath out s l o w l y.
- ☺ Do it again
- ☺ Keep your arms at your side. Wiggle and shake your hands.
- ☺ SMILE

**How to answer questions during the Interview:**

Answer questions with complete sentences.

So, If the Judge asks: "What did you learn by doing this project?"  
Don't say "About gerbils."

Do say "I learned about gerbils, the food they need to eat to stay healthy and how to make sure they get enough exercise."

You can offer more information about your project and exhibit to help the judge understand what you know.

If you don't know the answer to a question, tell the judge, plus tell the judge something else you do know. Example: "I don't remember how much the wood cost, but the cost of the whole birdhouse was \$6.80."

If you don't understand the judge's questions, tell the judge. Example: "I don't understand your question." (Wait for the judge to ask a different question.)

# ABSENTEE INTERVIEW JUDGING FORM

Absentee Interview Judging sheets are to be used only if the 4-Her cannot be present at Interview Judging. The 4-Her using this form will not be eligible for Grand and Reserve Champion. It must be signed by the leader and permission given by leader or office.

Project \_\_\_\_\_

Exhibit \_\_\_\_\_

Name \_\_\_\_\_

Age as of September 1<sup>st</sup> \_\_\_\_\_ Years in 4-H \_\_\_\_\_ Years in Project \_\_\_\_\_

I chose this project because \_\_\_\_\_

\_\_\_\_\_  
\_\_\_\_\_

Steps in making this project include \_\_\_\_\_

\_\_\_\_\_  
\_\_\_\_\_

Skills I learned from making this project were \_\_\_\_\_

\_\_\_\_\_  
\_\_\_\_\_

Problems I had with this project were \_\_\_\_\_

\_\_\_\_\_  
\_\_\_\_\_

The costs for this project were \_\_\_\_\_

\_\_\_\_\_  
\_\_\_\_\_

If I did this project again, I would do this different \_\_\_\_\_

\_\_\_\_\_  
\_\_\_\_\_

Leader's signature: \_\_\_\_\_

Date \_\_\_\_\_