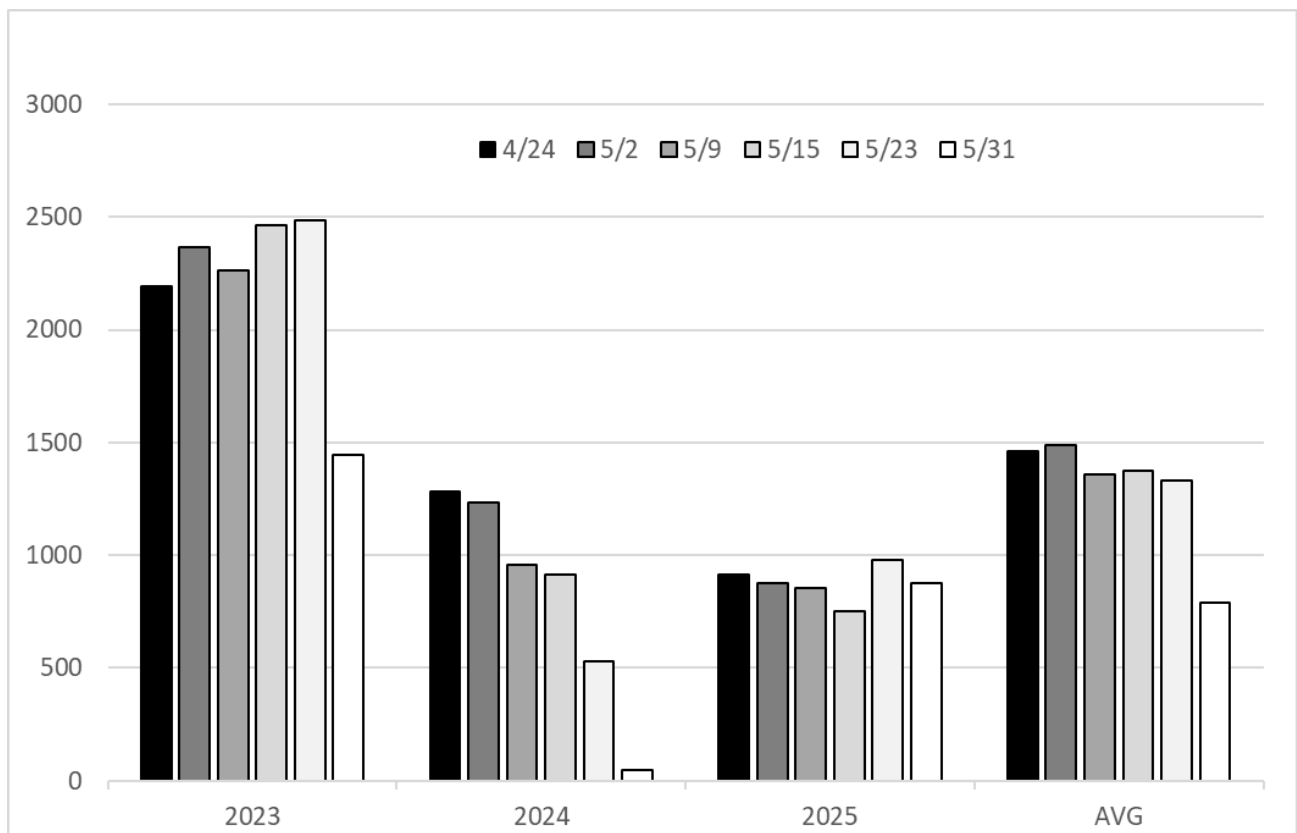


## Canola Planting Date Study

John Rickertsen – Hettinger Research Extension Center

This study was initiated in 2023 to look at the impact of later May planting dates on canola yield and quality. Three canola hybrids were planted every week starting in late April until the end of May. Notes were observed on beginning and ending flowering, maturity and height. Trial was harvested for yield and samples taken for oil analysis. Results over the past three have varied due to environmental conditions, in 2023 with very favorable rainfall and temperatures, all but the late date performed well. 2024 was droughty and warmer with only the first two dates yielding well, middle dates suffering some yield loss, the fifth date having significant yield loss and the last date yielding close to zero. 2025 had good precipitation throughout the growing season and all dates performed similarly. This study will be continued in 2026.

**Canola Planting Date Yields 2023 -2025, Hettinger, ND**



# Canola Planting Date - 2025

Hettinger, ND

Treatment	Start Flower	End Flower	Start Flower	End Flower	Bloom Duration	Plant Height	Seed Oil	Grain Yield
	date	date	DAP <sup>1</sup>	DAP <sup>1</sup>	days	inches	%	lb/ac
<b>Planting Date</b>								
4/23	6/16	7/7	55	76	21	33	42.3	914
5/2	6/21	7/10	51	70	19	33	42.3	874
5/9	6/24	7/13	47	66	18	32	43.0	856
5/14	6/28	7/17	46	65	19	31	41.2	750
5/23	7/3	7/21	42	60	19	33	40.9	980
5/29	7/7	7/25	40	58	19	29	39.2	874
LSD 5%	0.3	0.5	0.3	0.5	0.6	1.6	0.6	72
<b>Date X Variety</b>								
4/23 - L340PC	6/16	7/7	55	76	21	32	41.8	1028
4/23 - CP7250LL	6/18	7/9	57	78	21	36	43.2	795
4/23 - DK400TL	6/15	7/7	54	76	22	32	41.8	919
5/2 - L340PC	6/21	7/10	51	70	19	35	42.4	983
5/2 - CP7250LL	6/22	7/11	52	71	19	33	42.1	874
5/2 - DK400TL	6/19	7/9	49	69	20	32	42.3	765
5/9 - L340PC	6/25	7/12	48	65	18	33	41.9	794
5/9 - CP7250LL	6/26	7/14	49	67	19	32	42.6	888
5/9 - DK400TL	6/23	7/12	46	65	19	32	44.5	886
5/14 - L340PC	6/28	7/17	46	65	19	32	40.3	648
5/14 - CP7250LL	6/29	7/19	47	67	20	31	40.7	762
5/14 - DK400TL	6/28	7/16	46	64	18	30	42.5	840
5/23 - L340PC	7/3	7/20	42	59	18	33	40.1	895
5/23 - CP7250LL	7/4	7/24	43	63	20	33	40.1	985
5/23 - DK400TL	7/2	7/20	41	59	19	32	42.5	1059
5/29 - L340PC	7/7	7/25	40	58	19	30	38.4	835
5/29 - CP7250LL	7/8	7/26	41	59	18	30	39.0	917
5/29 - DK400TL	7/6	7/25	39	58	19	28	40.3	871
LSD 5%	1	1	1	1	1	NS	1.0	125
Trial Mean	6/27	7/16	47	66	19	32	41.5	875
C.V. %	0.1	0.1	0.1	0.1	3.6	5.3	1.4	8.4

<sup>1</sup> Days after planting

Harvest Dates: Dates 1,2,3 - August 20; Dates 4,5 - August 28

Previous Crop: Oats