

PENTATOMOIDEA (HEMIPTERA): NEW SPECIES  
AND SYNONYMY.

By DENNIS LESTON, F.R.E.S.

Two new Pentatomidae from the Ethiopian region are described and nomenclatural and synonymic changes involving all the Old World regions are proposed in this paper. Where type-material has been seen this is indicated by (typ. vid.).

**Urostylidae** Dallas, 1851.

✓ *Urochela blotei*, **nom. nov.**

*Urochela pilosa* Blöte, 1945, nec Stål, 1876. Zool. Meded. xxv, p. 315.

**Pentatomidae** Leach, 1815.

✓ *Apines* Dallas, 1851, type: *A. concinna* Dallas. List spec. Hemipt. insect. coll. Brit. Mus., i, p. 195.

*Neostrachia* Saunders, 1877, type: *N. hellenica* Saunders. Ent. mon. Mag., xiv, p. 103. **Syn. nov.**

*Actuarius* Distant, 1901, type: *Pentatoma albonotata* Westwood, Proc. zool. Soc. Lond., 1900, p. 814. **Syn. nov.**

✓ *Apines bisignata* (Walker), 1867, **comb. nov.**

*Rhaphigaster bisignatus* Walker, 1867, Cat. spec. Het.-Hem. coll. Brit. Mus., ii, p. 366 (typ. vid.).

*Neostrachia hellenica* Saunders, 1877, Ent. mon. Mag., xiv, p. 103 (typ. vid.), **syn. nov.**

*Menida elongata* Distant, 1902, Fauna Brit. Ind., Rhynchota, i, p. 230 (typ. vid.), **syn. nov.**

✓ *Apines albonotata* (Westwood), 1837, **comb. nov.**

*Pentatoma albonotata* Westwood, 1837, Cat. Hem. coll. Rev. F. W. Hope, i, p. 37 (typ. vid.).

*Actuarius albonotatus* Distant, 1901, Proc. zool. Soc. Lond., 1900, p. 814.

✓ *Apines hargreavesi*, **sp. nov.** (Figs. 1-2.)

Black; central marking on pronotum, lateral margin of hemelytra, connexivum and markings on scutellum white. Deeply punctate on head, pronotum and scutellum; shallowly so on hemelytra. Oblong-oval.

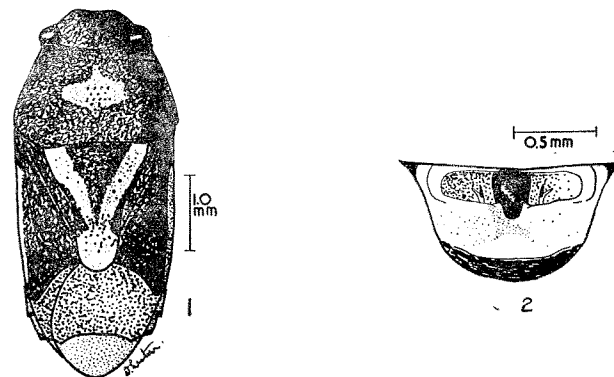
Head with lateral margins sinuate before the eyes, then subparallel; broadly rounded apically. Clypeus and paraclypeus of equal length. Antennal ratios 5:9:8:12: (5th missing). Rostrum black, reaching to mid-metasternum.

Margins of pronotum narrowly reflexed. Centre of disc with a transverse oval marking produced anteriorly and posteriorly along the midline. A small spot of dark puncturation in the centre of the pale spot.

Scutellum with a large submarginal fascia on each side from the anterior margin to the frena; apex broadly marked. Hemelytra with a pale margin to most of the corium; membrane dark.

Ventral surface glossy blue-black, coarsely punctate, with a broad smooth brown fascia on the venter. 3rd and 4th abdominal sterna with an incipient pale spot on either side of the smooth fascia. Stink-gland process produced to the antero-lateral corner of the evaporatorium. Surrounds of coxal cavities, coxal cavities, coxae, trochanters and basal

Figs. 1-2.



1.—*Apines hargreavesi*, sp. nov., ♂. 2.—*id.*, apical view of ♂ genital segment.

part of femora white; remainder of legs black. Apex of pygophore (9th segment) as figured.

Length 4.8 mm. Maximum pronotal width 2.1 mm.

*Type*: ♂, Kampala, Uganda, 18. iv. 1923 (*H. Hargreaves*), B.M. 1950-96. In British Museum (Nat. Hist.).

*Paratype*: ♂, same data as type.

The genus *Apines* has not previously been reported, save erroneously, from the Ethiopian region. Its dorsal markings clearly differentiate *A. hargreavesi* from *A. concinna* Dallas (figured by Distant, 1902, Fauna Brit. Ind., Rhynchota, i, p. 187), a species to which it is nevertheless closely allied.

✓ *Menida nyasae* Distant, 1898, Ann. & Mag. Nat. Hist. (7) ii, p. 313.

*Menida guttata* Schouteden, 1910, Schwed. zool. exped. Kilimanjaro Meru. ii (12), p. 90, **syn. nov.**

*Apines africana* Jensen-Haarup, 1931, Ent. Medd. xvii, p. 331, **syn. nov.**

✓ *Menida nyasae nyasae*, **ssp. nov.** (= *africana* J.-H.), occurs in Nyasaland whilst *M. nyasae guttata*, **ssp. nov.**, has been taken at many localities along the Kenya-Tanganyika border.

✓ *Menida loriventris* (Germar), 1837.

*Cimex loriventris* Germar, 1837, Rev. ent. (Silberman), v., p. 173 (typ. vid.).

*Rhaphigaster maculiventris* Dallas, 1851, List spec. Hemipt. insect. coll. Brit. Mus., i, p. 286 (typ. vid.) **syn. nov.**

*Rhaphigaster elongatus* Signoret, 1858, Arch. Ent. (Thomson), ii, p. 289, **syn. nov.**

*Rhaphigaster cincticeps* Stål, 1858, Ovf. Vet.-Akad. Forh., xv, p. 438, **syn. nov.**

This species breaks down into a number of subspecies: *M. loriventris loriventris*, **ssp. nov.**, occurs in Cape Province, Natal and Southern Rhodesia and *M. loriventris maculiventris*, **ssp. nov.**, in Cameroons, Nigeria, Senegal and Uganda. Other subspecies, not at present named, occur (a) in Angola, (b) in Belgian Congo, (c) in Abyssinia.

✓ *Menida transversa* (Signoret), 1861.

*Rhaphigaster transversa* Signoret, 1861, Ann. Soc. ent. Fr. (3), viii, p. 936.

*Menida transversa* Stål, 1876, K. Svensk. Vet. Akad. Handl. (4), xiv, p. 99.

*Menida distanti* Horvath, 1892, Termesz. fuzetek., xv, p. 258, **syn. nov.**

*Menida distanti* was known previously from Natal, the Rhodesias, Angola and Tanganyika; *M. transversa* from Madagascar. They are conspecific.

✓ *Menida apicalis* (Dallas), 1851.

*Rhaphigaster apicalis* Dallas, 1851, List spec. Hemipt. insect. coll. Brit. Mus., i, p. 285 (typ. vid.).

*Menida apicalis* Distant, 1902, Fauna Brit. Ind., Rhynchota, i, p. 228.

*Menida distincta* Distant, 1879, Trans. ent. Soc. Lond., 1879, p. 122, (typ. vid.), **syn. nov.**

*Menida vanessae*, **sp. nov.**, (Fig. 3.)

Yellow-brown, numerous dark brown to black markings and brown puncturation. Elongate, almost rectangular.

Head with lateral margins slightly sinuate; broadly rounded, apically truncate. Clypeus and paraclypeus of equal length. Head (with eyes) broader than long (37:32); puncturation in four longitudinal rows anteriorly, three posteriorly; a dense oblique row before the eyes, incomplete medially. Antennal ratios 7:7:14:16:15; segments thick, 2nd the thinnest. Rostrum just reaching to the metasternum.

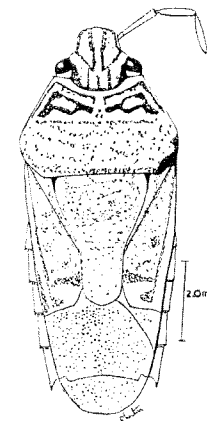
Lateral margins of pronotum narrowly reflexed; anterior margin broadly callose and smooth. A submarginal series of puncturation anteriorly and laterally; calli defined by broad black markings with

puncturation. Posterior half of scutellum with numerous scattered dark punctures.

Scutellum longer than broad (59:47). Angles impunctate and pale, black externally; apex impunctate and remainder with scattered dark puncturation.

Hemelytra with a submarginal pale and callose line (subcosta). Remainder with scattered puncturation confluent in a broad triangle at the base of the corium, the triangle with an oblique orange and impunctate fascia.

Fig. 3.



*Menida vanessae*, sp. nov., ♀.

Membrane colourless and transparent save for the fuscous inner angle; eight or so longitudinal veins faintly perceptible (omitted from figure). Connexivum pale with dense concolourous puncturation, sutures dark brown. Dorsum of abdomen dark brown.

Underside of thorax pale with scattered dark punctures and large metallic greenish-black markings at: (1) external to the anterior coxæ and confluent before them, (2) in front of and external to the mid-coxæ, (3) external to the evaporatorium. Entire inter-coxal region pitchy black.

Evaporatorium black; stink-gland process pointed, somewhat flattened, reaching almost to the antero-lateral angle of the evaporatorium.

Venter with a laterally compressed spine nearly reaching to the mid-coxæ. Abdominal sterna largely smooth and impunctate; 2nd entirely metallic green, remainder with a lateral green marking within the inter-spiracular line and extending narrowly along the transverse sutures. Spiracle surrounds dark brown. 7th sternum with a central brown spot. Length ♀ 10.2 mm. Maximum pronotal width 4.0 mm. Length ♂ 9.0 mm. Maximum pronotal width 3.9 mm.

*Type*: ♀, Bugomolo, Uganda, 24. iv. 1927 (*H. Hargreaves*). B.M. 1950-96. In British Museum (Nat. Hist.).

*Paratypes*: ♂, Kampala, Uganda, 12. x. 1913 (*C. C. Gowdrey*). In Brit. Mus. (N.H.).

♂, Dwali, Uganda, 21. iv. 1927. In Brit. Mus. (N.H.).

♂, Buar, Cameroons (*A. Loveridge*). In Coll. Leston.

The Cameroons male is darker throughout than the Uganda specimens and the green abdominal markings larger and more confluent. *M. vanessae* is much larger, more elongate-rectangular than all other Ethiopian *Menida*. At first glance it is most atypical but the structure clearly places it in this genus although a revision of the world *Menida* may show it to be subgenerically distinct.

✓ *Iphiarusa compacta* (Distant), 1887, **comb. nov.**

*Anaxandra compacta* Distant, 1887, Trans. ent. Soc. Lond., 1887, p. 355 (typ. vid.).

*Iphiarusa aratrix* Breddin, 1904, Wien. ent. Z., xxiii, p. 13, **syn. nov.**

✓ *Carbula* Stål, 1865, type: *Mormidea decorata* Signoret. Hemipt. afric., i, p. 140.

*Ibaka* Distant, 1910, type: *Ilipla natalicola*. Ann. & Mag. Nat. Hist. (8), vi, p. 213, **syn. nov.**

✓ *Sciocoris cachani*, **nom. nov.**

*Sciocoris scutellaris* Cachan, 1952, nec Schmidt, 1939. Mem. Inst. sci. Madagascar (E), i, (2), p. 326.

✓ *Stollia* Ellenrieder, 1862, type: *S. fuliginosa* Ellenr. Nat. Tijdschr. Ned. Ind., xxiv, p. 149.

*Bainbriggeanus* Distant, 1918, type: *B. fletcheri* Distant. Fauna Brit. Ind., Rhynchota, vii, p. 135, **syn. nov.**

✓ *Stollia guttigera* (Thunberg), 1783.

*Cimex guttigerus* Thunberg, 1783, Novae Ins. species, ii, p. 32.

*Bainbriggeanus fletcheri* Distant, 1918. Fauna Brit. Ind., Rhynchota, vii, p. 135 (typ. vid.), **syn. nov.**

✓ *Halyomorpha viridiscens* (Walker), 1867.

*Atelocera viridiscens* Walker, 1867, Cat. spec. Het.-Hem. coll. Brit. Mus. i, p. 215 (typ. vid.).

*Halyomorpha magnifica* Bergroth, 1921, Notul. ent., Helsinki, i, p. 6 (typ. vid.), **syn. nov.**

*Halyomorpha erlangeri* Schouteden, 1905, Ann. Soc. ent. Belg., xlix, p. 12.

*Halyomorpha viridescens* (emend) Bergroth, 1914, nec Walker. Rev. zool. bot. Afr., iii, p. 448 (Bergr. spec. vid.), **excl. syn. nov.**

✓ *Acrosternum canariensis* (Lindberg), 1953, **comb. nov.**

*Nezara canariensis* Lindberg, 1953, Comment. biol. (1), xiv, p. 43 (paratyp. vid.).

✓ *Dybowskia* Jakovlev, 1876, type: *D. ussuriensis* Jak. Bull. Sci. nat. Moscou, ii, p. 85.

✓ *Svarinella* Balthasar, 1937, type: *S. inexpectata* Balt. Acta Soc. ent. Cech., xxxix, p. 103, **syn. nov.**

✓ *Dybowskia reticulata* (Dallas), 1851.

*Bolbocoris* ? *reticulatus* Dallas, 1851, List. spec. Hemipt. insect. coll. Brit. Mus., i, p. 45.

*Dybowskia reticulata* Breddin, 1905, Wien. ent. Z., xxiv, p. 30.

*Svarinella inexpectata* Balthasar, 1937, Acta Soc. ent. Cech., xxxix, p. 104, **syn. nov.**

✓ *Phricodus fasciatus* Signoret, 1861, **sp. res.**, Ann. Soc. ent. Fr. (3) viii, p. 924.

*Phricodus hystrix* Cachan, 1952, nec Germar, 1837, Mem. Inst. Sci. Madagascar (E) i (2), p. 336, **syn. nov.**

The *Phricodus* species occurring in Madagascar, recently redescribed by Cachan, is distinct from the South African *P. hystrix* in the form of the male parandria.

✓ *Ancyrocoris lanceolatus* (Jeannel), 1913, **comb. nov.**

*Diploxys lanceolatus* Jeannel, 1913, Voyage Alluaud Jeannel Afr. Orient., i, p. 40.

✓ *Ancyrocoris rhodesiana* (Distant), 1910, **comb. nov.**

*Diploxys rhodesiana* Distant, 1910, Ann. & Mag. Nat. Hist. (8), vi, p. 92 (typ. vid.).

✓ *Ancyrocoris ituriensis* (Schouteden), 1916, **comb. nov.**

*Diploxys ituriensis* Schouteden, 1916, Rev. zool. bot. Afr., iv, p. 305.

✓ *Kahlamba malleata* (Distant), 1900, **comb. nov.**

*Acoloba malleata* Distant, 1900, Ent. mon. Mag., xxxvi, p. 82 (typ. vid.).  
*Kahlamba typica* Distant, 1906, Ann. & Mag. Nat. Hist. (7), xviii, p. 289 (typ. vid.), **syn. nov.**

✓ *Aeschrocoris* Bergroth, 1887, type: *Aeschrus obscurus* Dall. Ent. Nachr., xiii, p. 152.

*Aeschrus* Dallas, 1851, nom. preocc., List spec. Hemipt. insect. coll. Brit. Mus., i, p. 194.

*Sacotala* Distant, 1921, type: *S. rugulosa* Distant. Entomologist, liv, p. 43, **syn. nov.**

✓ *Aeschrocoris rugulosa* (Distant), 1921, **comb. nov.**

*Sacotala rugulosa* Distant, 1921, Entomologist, liv, p. 43 (type. vid.).

- ✓ *Diaphyta* Bergroth, 1891, type: *Cuspicona pulchra* Dallas.  
*Periboea* Stål, 1867, nom. preocc., Ofv. Vet.-Akad. Forh., xxiv, p. 521.  
*Vandiemenia* Distant, 1910, type: *V. tasmani* Distant. Ann. & Mag. Nat. Hist. (8), vi, p. 588, **syn. nov.**
- ✓ *Diaphyta tasmani* (Distant), 1910, **comb. nov.**  
*Vandiemenia tasmani* Distant, 1910, Ann. & Mag. Nat. Hist. (8), vi, p. 588 (typ. vid.).
- ✓ *Pentatoma* Olivier, 1789, type: *Cimex rufipes* L. Ency. Meth., iv, p. 25.  
*Tropicoris* Hahn, 1834, type: *Cimex rufipes* L. Wanzen Insecten, ii, p. 52.  
*Tropidocoris* Marshall, 1868, emend., Ent. mon. Mag., iv, p. 281.  
*Gudea* Distant, 1911, type: *G. ichikawana* Distant. Ann. & Mag. Nat. Hist. (8), vii, p. 348, **syn. nov.**
- ✓ *Pentatoma semiannulata* (Motschulsky), 1859.  
*Tropicoris semiannulata* Motschulsky, 1859, Bull. Soc. nat. Moscou, 1859, p. 501.  
*Gudea ichikawana* Distant, 1910, Ann. & Mag. Nat. Hist. (8), vii, p. 349 (typ. vid.), **syn. nov.**

## ACKNOWLEDGMENTS.

The author acknowledges the assistance given by the Keeper, Dept. of Entomology, British Museum (Natural History); Dr. J. Carayon, Museum National d'Histoire Naturelle; Dr. R. Malaise, Naturhistoriska Riksmuseum; Dr. P. Basilewsky, Musée Royale du Congo Belge.

catalogued

Leston, 1955  
types rec

64

From the ANNALS AND MAGAZINE OF NATURAL HISTORY  
 Ser. 12, vol. viii, p. 698, September, 1955.