



Madeline Randolfi, NCIDQ, ASID, Affiliate Member of IALD

Interior Designer – Cushing Terrell
2014 NDSU Graduate

Madeline Randolfi is a certified interior designer at Cushing Terrell in Seattle, Washington. Her portfolio spans a variety of vertical markets including commercial interiors, retail, education, and healthcare workings with local, regional, and international clients.

Apart from her career as an interior designer, Madeline is also a cultural ambassador at Cushing Terrell. Her role consists of influencing the experience of new team members while supporting the firm's involvement in local communities and across digital platforms through social media.

Within Cushing Terrell, Madeline has been promoting the advancement and integration of lighting design within projects and practice across various disciplines. Madeline has volunteered on the Board of Directors of the Intermountain Chapter of ASID since 2016, serving as Communications Director, President-Elect, and President. She continues to volunteer on a national committee with ASID serving as the Chair-Elect of the Chapter Support Team (CST), advising chapter presidents during their term.

SoFi – Helena, MT

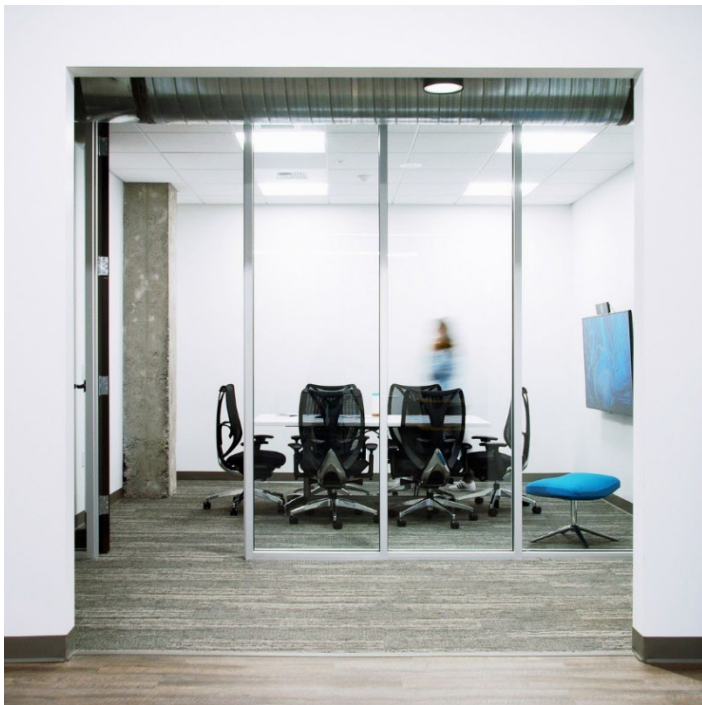
A tenant improvement of a 1936 storage facility used by Montana State Liquors for a tech startup company based out of San Francisco, California.



This adaptive reuse project celebrated the existing concrete deck and columns while inviting guests with vibrant pops of color.



A custom desk was inspired to reflect the rugged, industrial warehouse.

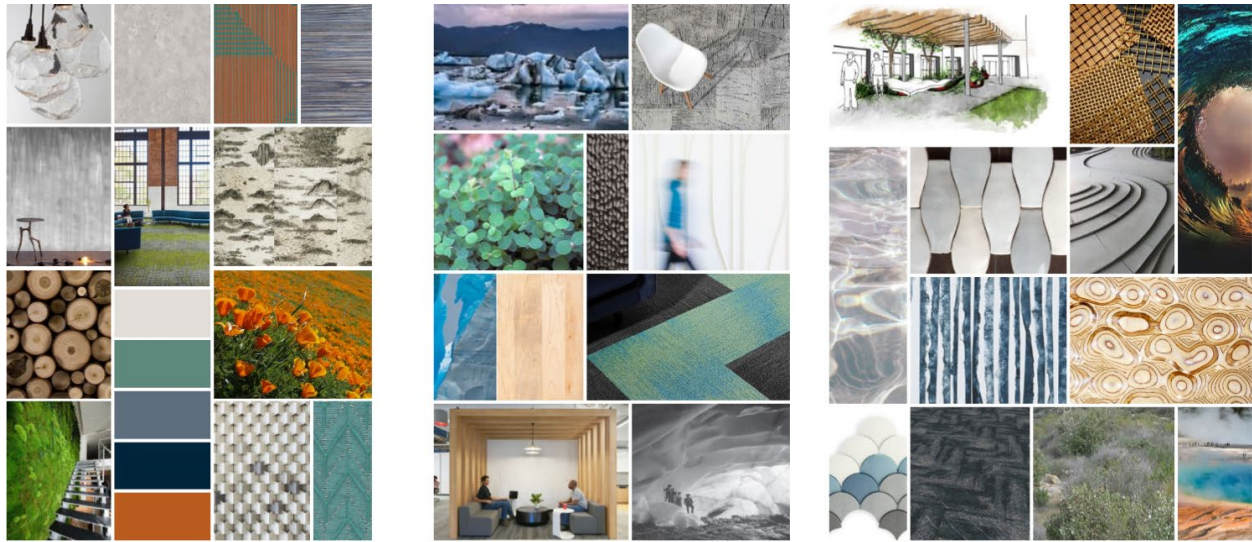


A variety of meeting spaces, such as the small conference room (left) and a phone room (right) offer users flexibility throughout their workday.



A custom binary code wallcovering subtly recognizes the primary user group, software engineers.

Concepts of the Translation of Flow into Architecture:

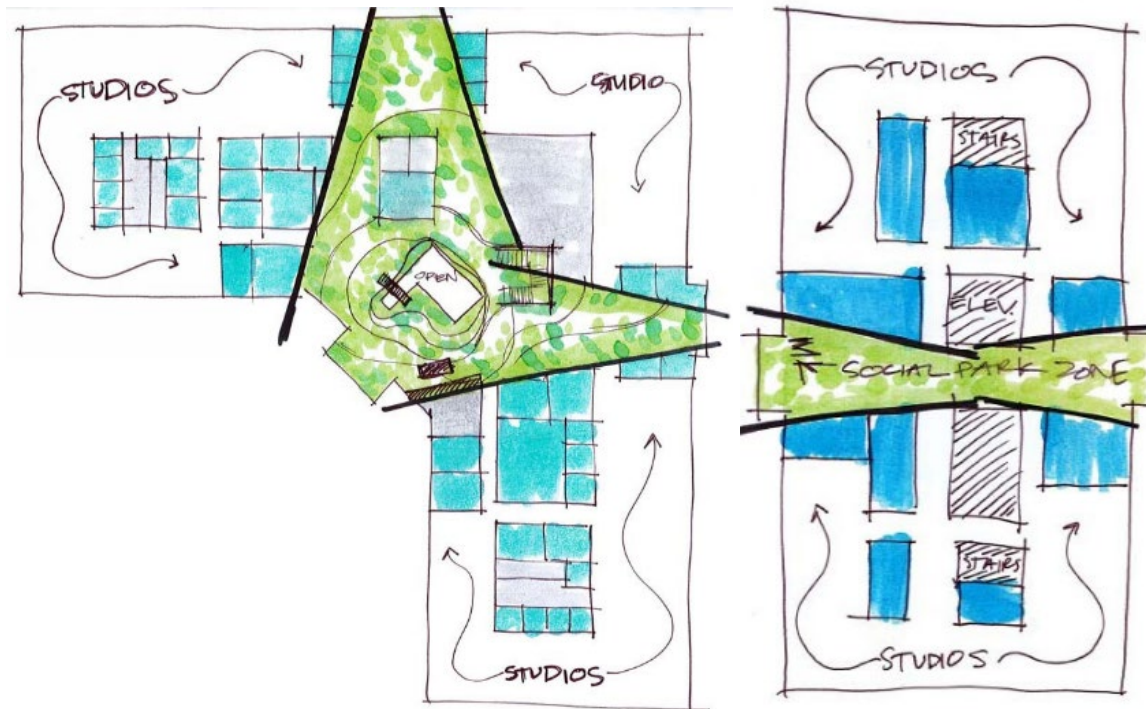


Mist

Solid

Fluid

Floor Plan Sketches:





A café amenity space with a custom steel wave-like structure and a color palette reminiscent of an eddy, centered around the design concept of the fluid state of water.



A glacier structure is anchored within the central breakroom and flows through the core of the building up to the remaining floors above. This building's concept is reflective of the solid state of water.



An intersection of vertical circulation (not shown), a breakroom (left), and a fitness center (back) provide the perfect intersection to delicately disburse custom hand-blown glass spheres and decorative light fixtures to mimic water droplets within the atmosphere, enforcing the design concept of mist for this building.

Bethany Joy Pilates – Billings, Montana

Bethany Joy Pilates is a boutique contemporary Pilates studio in the heart of downtown Billings, Montana consisting of informal lounge space, a dressing area, a private studio, and a larger studio for group classes. Once an abandoned storefront, the client imagined a space that is unique and engaging, inspiring women and men alike in the local community to find confidence in themselves through Pilates.



The custom-designed neon logo is the focal point within the space against the monochromatic color palette that celebrates architectural features such as the exposed brick and steel beams.



Within the large studio, the reformers, luminaries, and mirrors are coordinated to reduce glare for Pilate users.

Alberta Bair Theater – Billings, Montana

A renovation and addition of the 1931 Fox Theater, the last of the Fox Corporation's motion picture houses to be constructed before the Great Depression. The 1980s remodel left only a few remaining historic features reminiscent of art deco theater. This \$13.6 million dollar project is a vital landmark to the downtown community of Billings serving as the only performing arts center in the Northern Rockies.



Ornate terracotta panels and the chevron detailing at the exterior brick façade shown above became a source of inspiration for the renovation and addition of Alberta Bair Theater. The copper exterior scrim heavily influenced the interior color palette, a metaphor for the theatrical reference of “the unveiling of the curtain.”



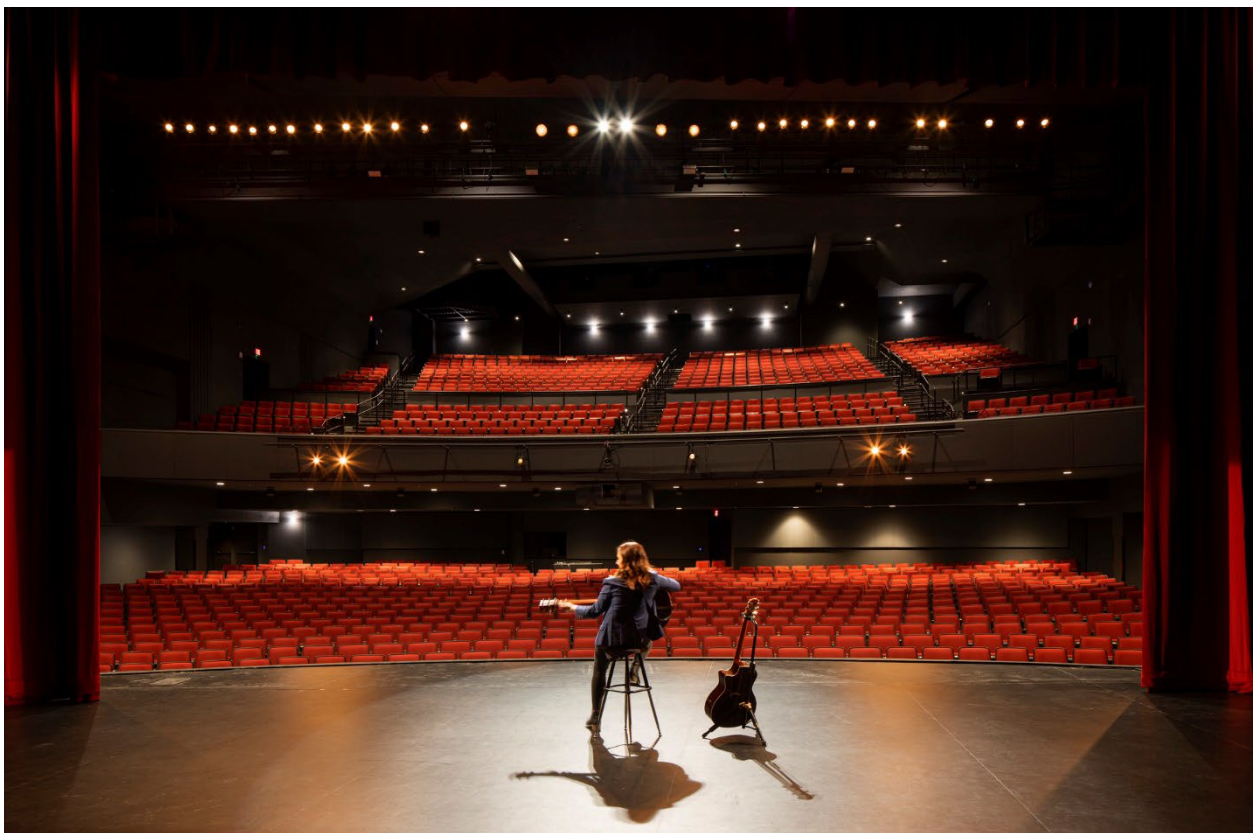
The 'starry sky' adjacent to the renovated concessions was brought to ideation during an office-wide design charrette while in schematic design.



These Eureka Drop Celeste light fixtures blend seamlessly with the minimal art deco aesthetic of the building, and the glass discs beautifully catch light throughout the course of the day.



Copper decorative pendants (left) are simple in form while providing visual interest and are reminiscent of the exterior scrim. A grazing light beautifully illuminates the terracotta panels that are original to the Fox Theater (right) enhancing their ornate design and texture.



Within the theater, a classic theatre red captures the pageantry of theatrical performances - a nod of respect to decades before.