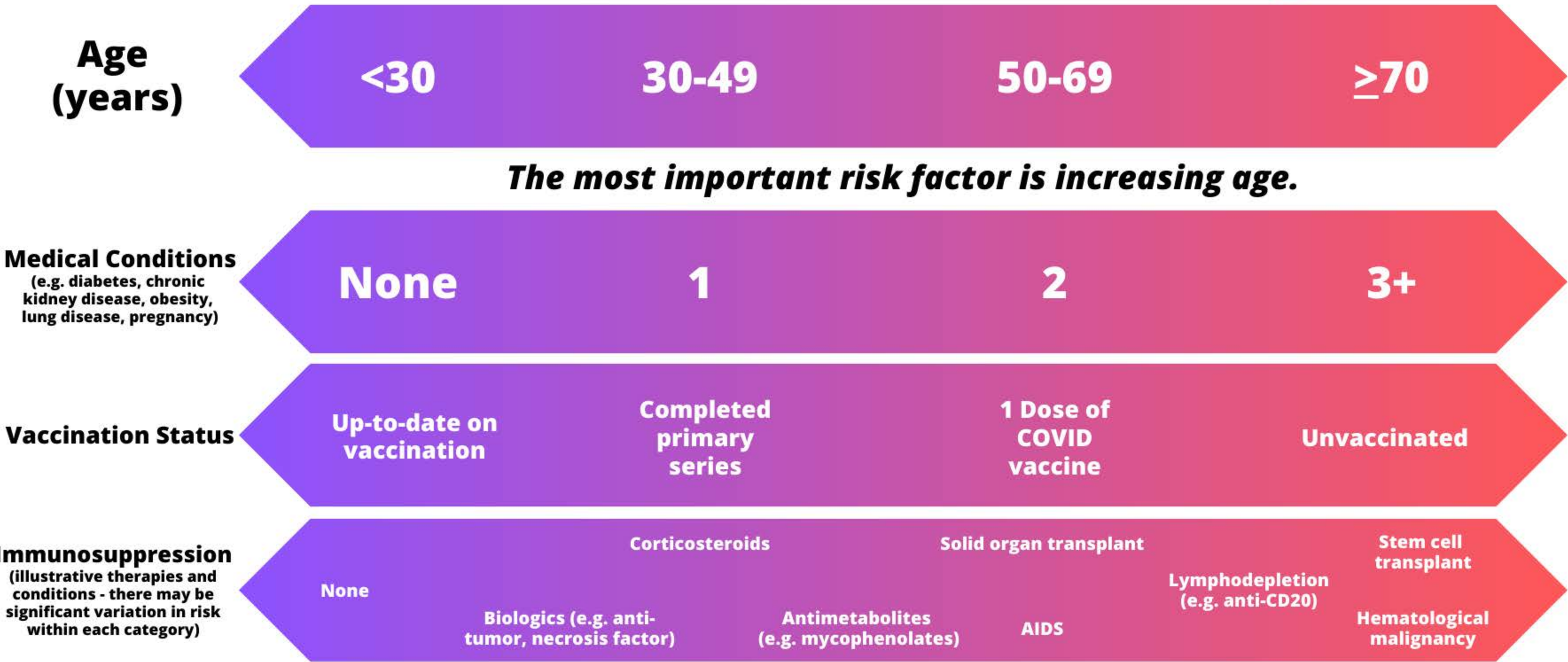


COVID-19 Risk Continuum

Lower Risk

Higher Risk



The most important risk factor is increasing age.

This figure outlines several considerations that impact risk for COVID-19, which exists on a continuum and is highly individualized. Listed comorbidities and immunosuppressive conditions are illustrative, not exhaustive; there is significant variability in the net state of immunocompromise even among people with the same condition.

Figure created by the Infectious Diseases Society of America. You may access the original graphic at <https://www.idsociety.org/covid-19-real-time-learning-network/special-populations/immunocompromised-populations/>.