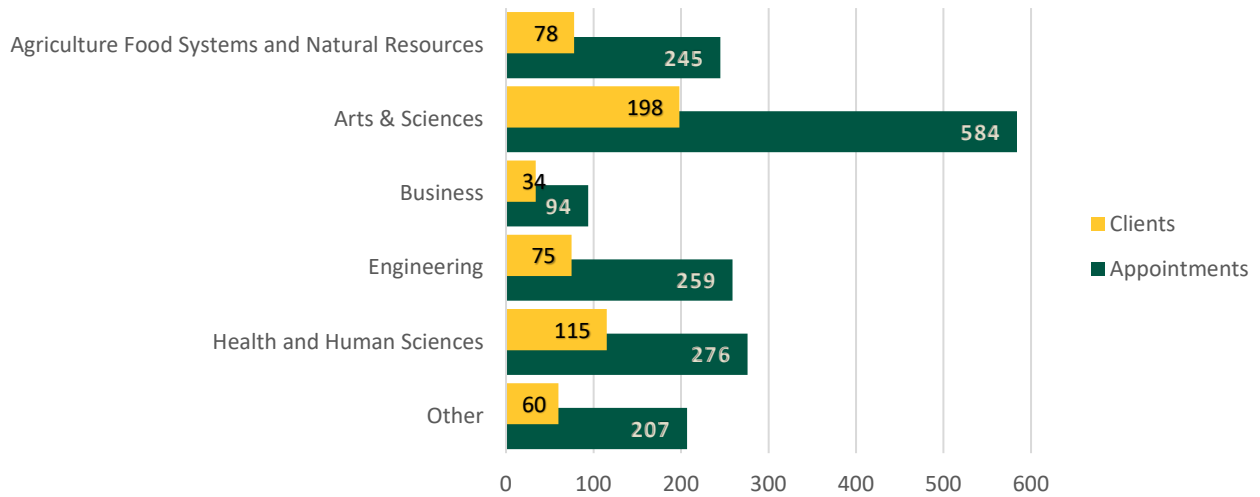


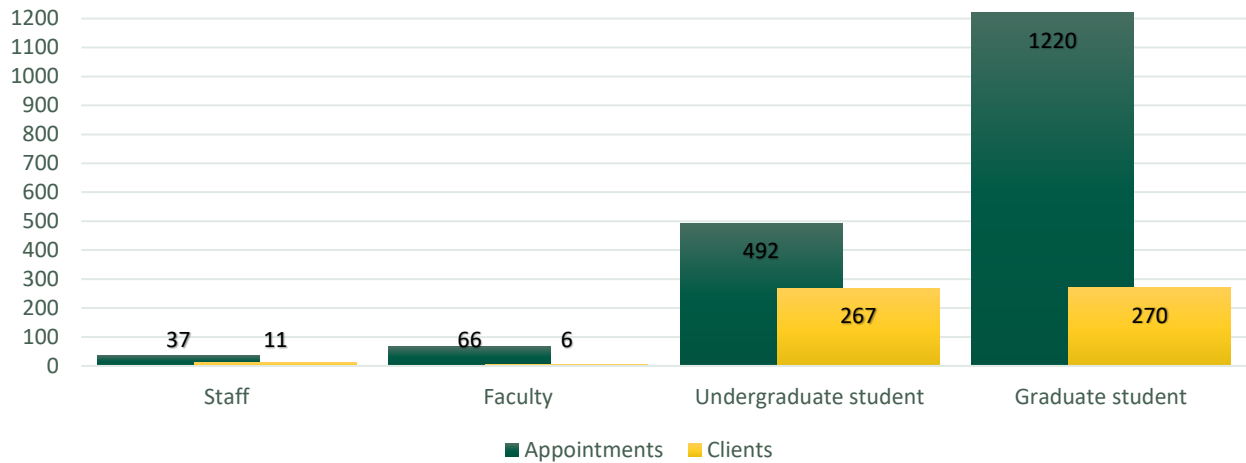
1911 Appointments

<p>+17% YoY FY24/FY23</p>	<p>2040 hours</p>	<p>560 clients</p>	
--------------------------------------	------------------------------	---------------------------	--

Appointments by College

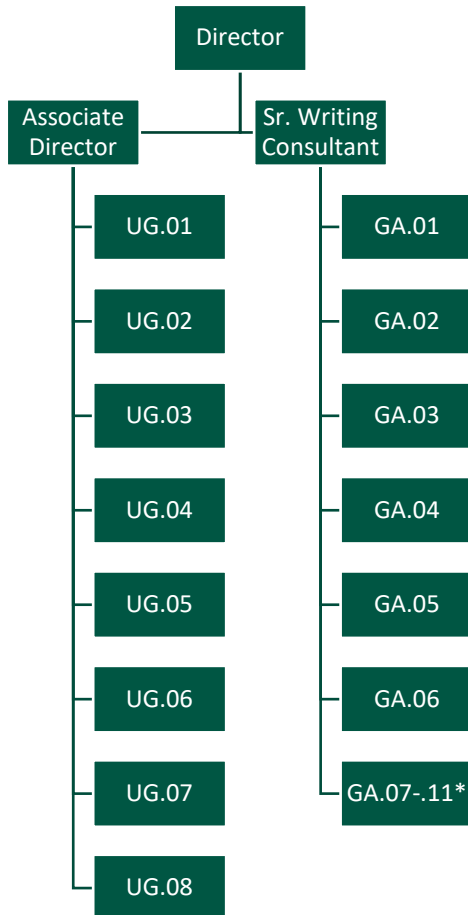
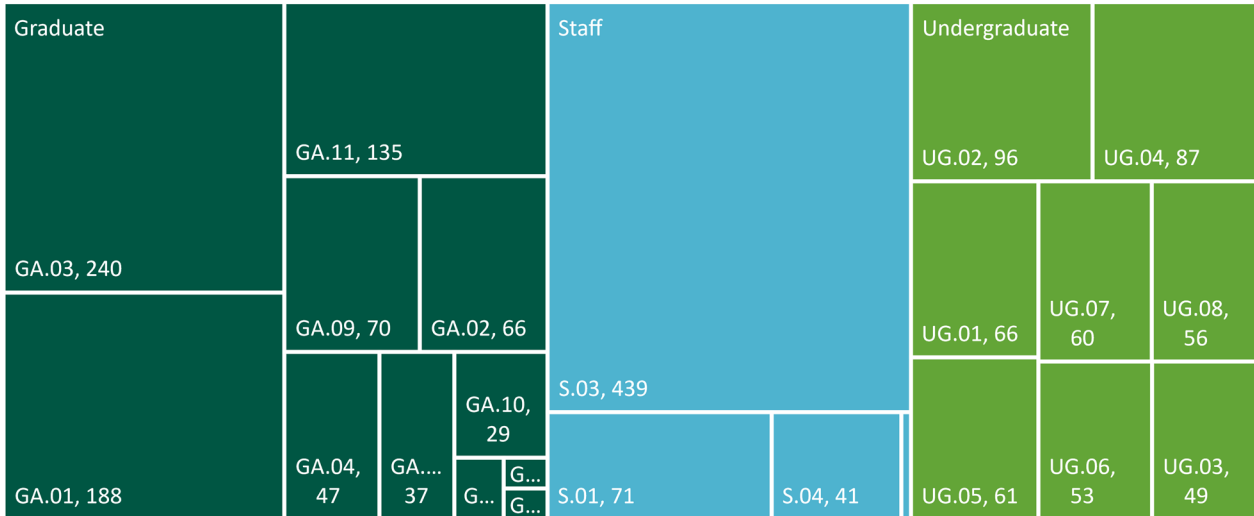


Appointments by client status



Appointments by personnel

■ Graduate ■ Undergraduate ■ Staff



Staff

- Director, 12 mo., FT
- Associate Director, 9 mo., 50% FT
- Sr. Writing Consultant, 9 mo., 66% FT

Undergraduate consultants, hourly

- 8 on staff, providing an average of 10h/wk each
- Chandice Johnson Fellowship awarded to UG consultant

Graduate consultants on 9 mo. CGIS stipend

- Engineering specialist, 20h
- Disquisition specialist, 20h
- Agriculture specialist, 10h
- Writing group & event lead, 10h
- UG Research & RaMP specialist, 10h
- Generalist, 10h

***Graduate consultants, additional**

- ENGLISH GTA, 20h fall, 10h spring
 - ENGL stipend
- NCI Visiting Scholar tutor (summer only)
- Summer, hourly
 - 60h/wk., 5 GAs