

Center for Writers Space Analysis

Prepared by Stephen Disrud, Interim Director of the Center for Writers

EXECUTIVE SUMMARY

The Center for Writers (CFW) uses university space to conduct a variety of activities that support writing production, provide direct writing instruction, and host events for students and faculty. Staff and graduate student employees also use offices to conduct regular administrative and professional activities for the CFW. Ideally, the CFW spaces are located in a cohesive, accessible, and high-traffic area, especially in the interest of encouraging undergraduate writer use of CFW services. Currently, the CFW occupies part of the Main Library, Suite 16 (lower level), which comprises three offices, a conference room, and an open multi-use area. Until recently, three additional offices and a large meeting space in Suite 16 were also dedicated to the CFW. This report collects data from AY 22-23 about CFW space usage and provides a summary assessment of the alignment of CFW activities to space requirements.

Key values and strategic initiatives that inform the understanding and assessment of CFW space follow. These are not the only key values that guide CFW work, but the values that are directly affected by space.

Values

Cohesiveness. A single, unified space for CFW work creates a singular and distinctive location for NDSU clients to go for writing. A single space strengthens the CFW brand on campus, allows for collaborative problem solving among staff and consultants, and encourages cross-training of undergraduate and graduate consultants.

Accessibility. Clients should find the space easy to locate and to use.

Hy-Flex capabilities. Both face-to-face and online consultations need to be available to clients, especially with NDSU's online initiative.

Privacy. Because of intellectual property issues related to research, identity privacy about sensitive issues that arise, and the sometimes deeply personal nature of writing, private consultation spaces are sometimes required.

Strategic initiatives

- Increase undergraduate client traffic
- Blend graduate and undergraduate services
- Coordinate with the Department of English, School of Humanities, and Grad Hub
- Scale up services for Writing Communities while maintaining core services such as one-on-ones and workshops and classes
- Make the work of the CFW visible and inviting to the NDSU community of students, faculty, and staff
- Transform CFW practices to promote excellence in NDSU's new institutional ecosystem

THE CHALLENGE

With reduced CFW-dedicated space, new approaches to assigning space to staff and activities need to be implemented without reducing the quality and professionalism of services.

Categorically, the CFW has three likely ways to meet the challenge:

1. work within the reduced space and find *ad hoc* solutions as needs arise
2. annex space in the Main Library to recover lost space from Suite 16
3. re-locate to a new space

Contents

Space Use Analysis.....3

 Activities that require space.....3

 Scheduled Consultations (45 hours per week)3

 Small-group meetings3

 Workshops, Classes, Bootcamps, & Events3

 Staff Offices & Graduate Consultant Workstations.....4

Assessment.....5

 Space requirements, summary5

 Change of situation5

Recommendations – *forthcoming (requires input)*6

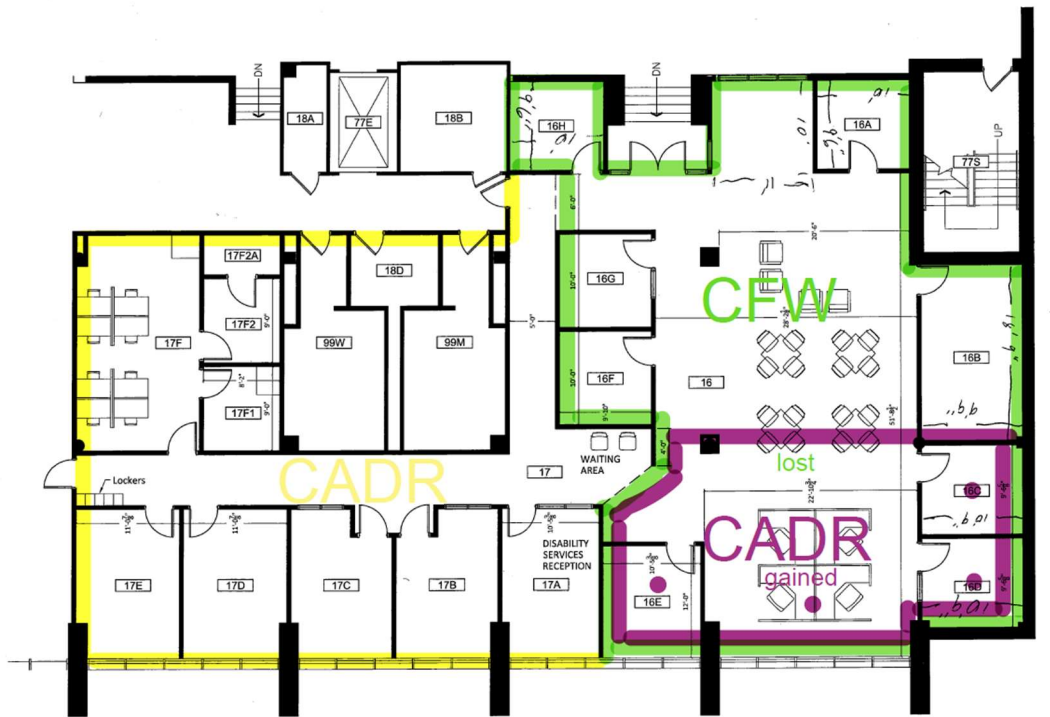
Appendix.....7

 Email from CADR (April 27, 2023)7

 Email from ENGL7

 Space Design Writing Center Scholarship8

 Bibliography9



NDSU
FACILITIES MANAGEMENT
PLANNING DEPARTMENT

LIBRARY
A012 BASEMENT

Option #2b2



5 Jul 2017