

# As-Built Record for Production Assembly

Team Members: Christian Koski, Falsteen Salem, Zachary Nagorski, Nicholas Snell

Sponsor: **John Deere**



JOHN DEERE

## Who?

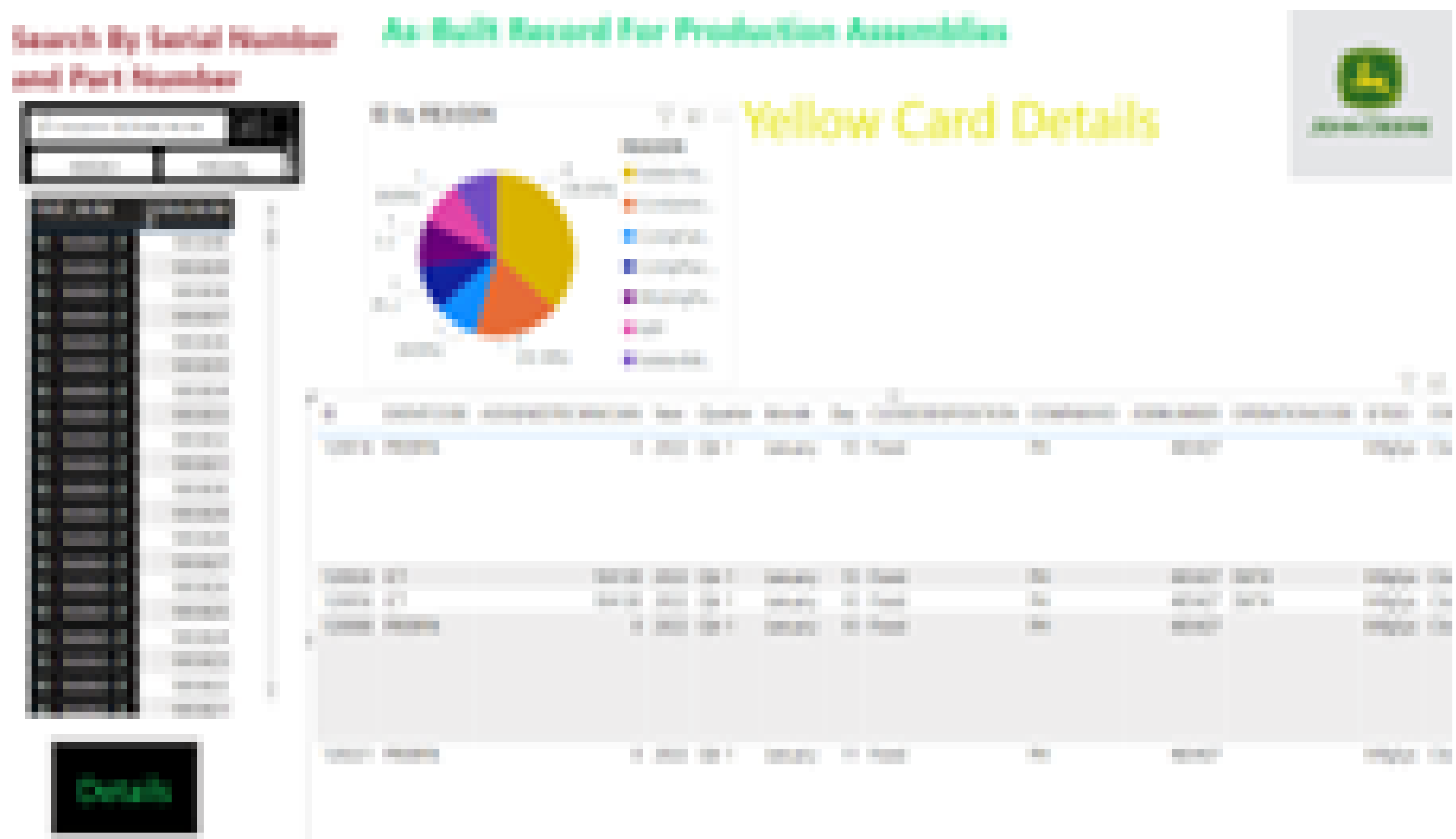
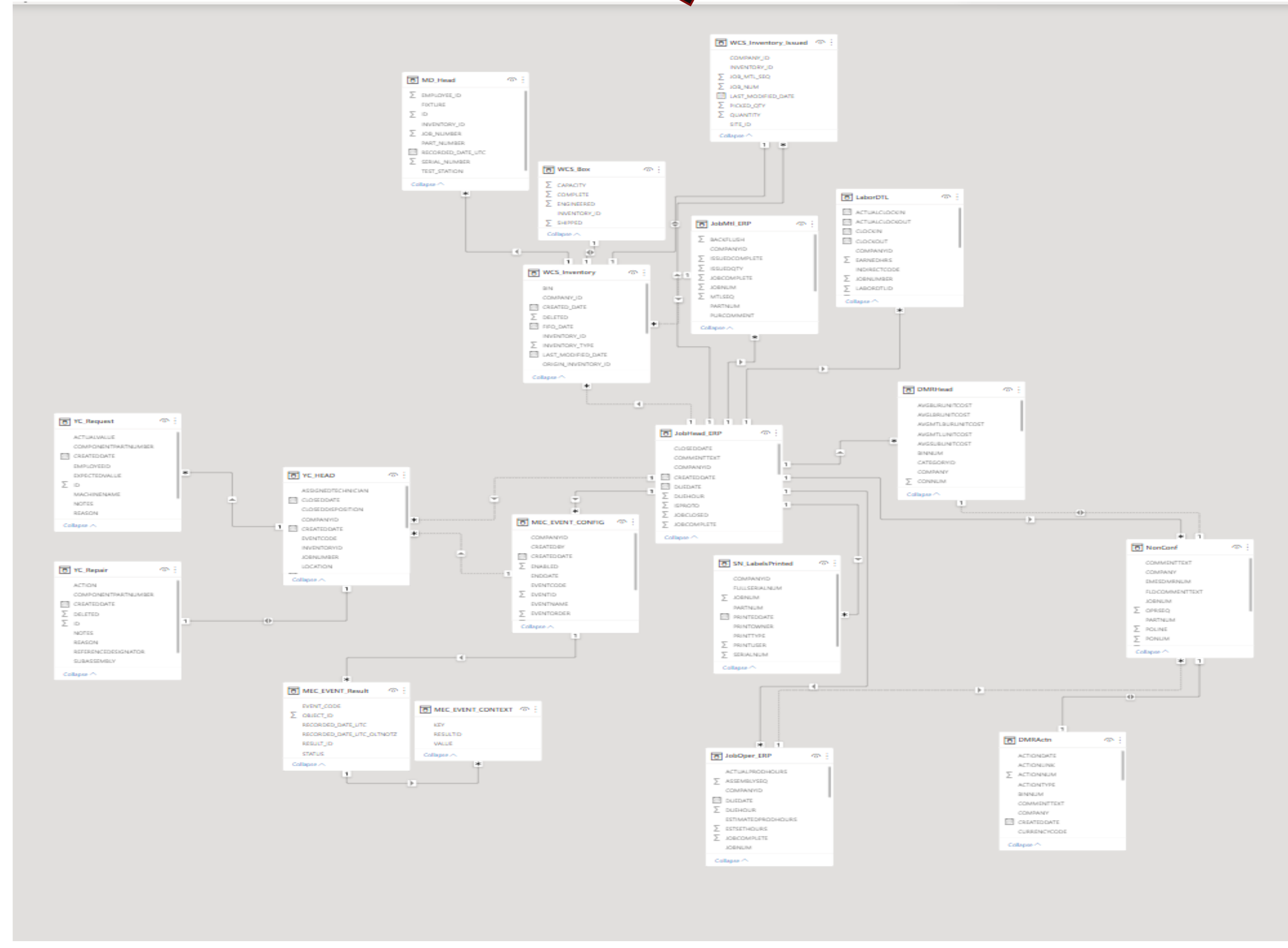
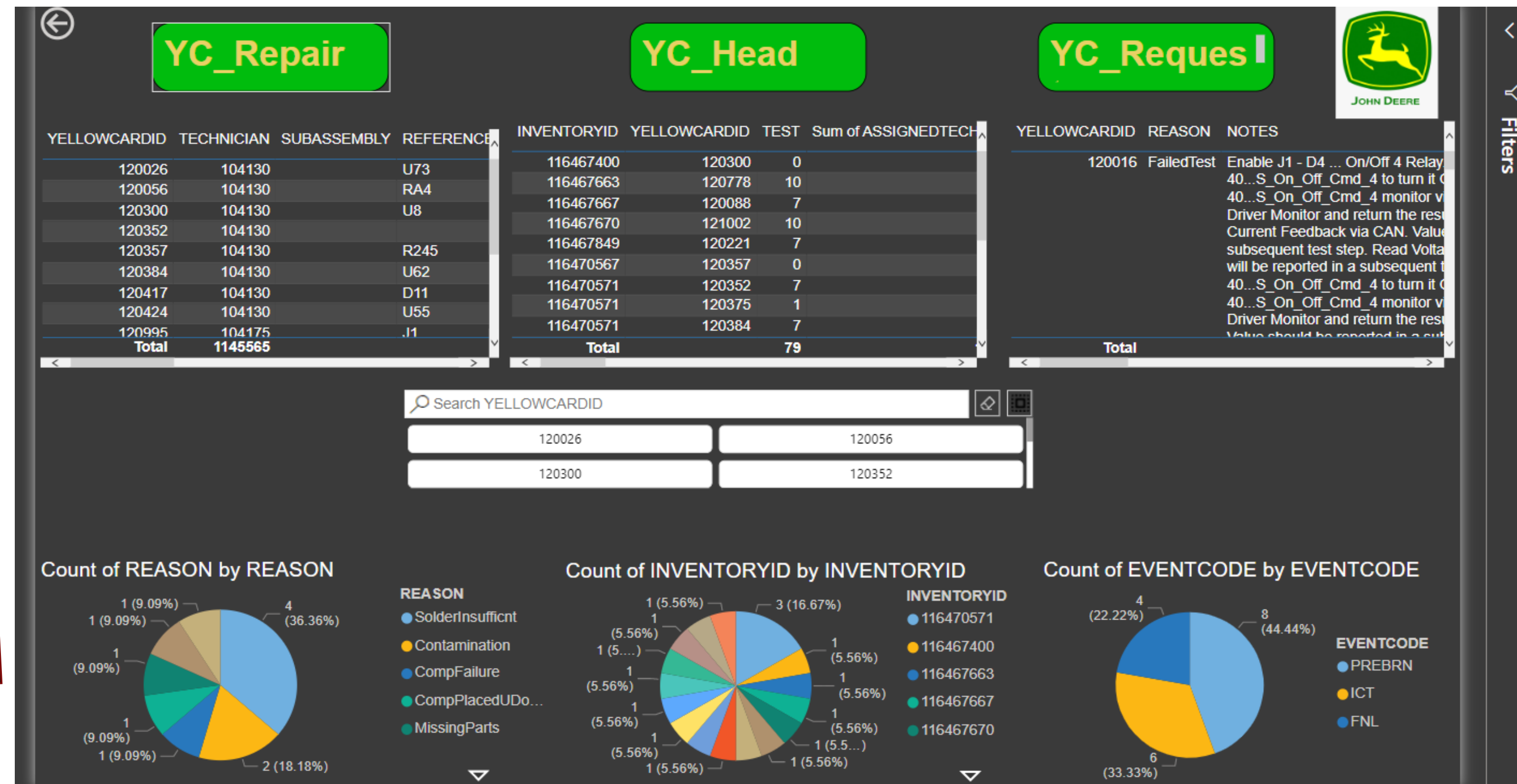
- John Deere employees use dataset to keep track of all parts that go into their products.
- Thousands of parts
- Parts are made by John Deere or bought from other companies

## What?

- An easy-to-use and easy-to-understand user interface combining all the data.
- All the available data associated with a particular assembly will be pulled and displayed given a part number or a serial number as input.
- User Friendly report.

## Why?

- John Deere needs to pull together all the information associated with their electronics assembly
- John Deere data is stored in csv files
- Reading from csv files is hard and time consuming



## How?

- Explore Power BI capabilities for search and visuals
- Convert CSV files to data modeled
- Create Data relationships
- Make a user-friendly report

