

NEW STUDENT *guidebook*



NORTH DAKOTA STATE UNIVERSITY

NDSU

NEW STUDENT CHECKLIST

Full details on checklist items are available at ndsuhighereducation.edu/orientation/checklist.

Academic Tasks

- Check Campus Connection for any holds or to-do items
- Reserve course materials online at the NDSU Bookstore
- Contact the Center for Accessibility and Disability Resources, if applicable
- Send final transcripts
- Meet with an academic advisor and register for classes

Financial Aid and Customer Account Tasks

- Complete all steps in the financial aid guide
- Set up an authorized payer, if someone else will make payments to your student account
- Consider completing a FERPA release form
- Search for part-time jobs using Handshake
- Contact the NDSU Military and Veterans Certification Office, if applicable

Prepare for a Successful Transition

- Submit your immunization record
- Upload your photo for your NDSU ID card
- Regularly check your NDSU email account
- Purchase a parking permit, if bringing a vehicle on campus
- Log into the Wellness Center portal and sign the waiver
- Check myNDSU for involvement opportunities
- Explore degree planning with Degree Map
- Attend Welcome Week events (August)
- Bring employment documentation for form I-9 if you will start a job
- Update your preferred name, if applicable



TABLE OF CONTENTS

IT Accounts and Online Services.....	1
Helpful Apps, Academic Colleges/ Exploratory Areas	2
Academic Policies.....	3
Degree Requirements, Academic Advising, Course Registration	4
Financing Your Education.....	5-6
Customer Account Services, Student Account Responsibilities, Student Policies and Expectations.....	7-8
Involvement and Leadership	9-10
Residence Life	11-12
Supporting Your Well-Being.....	13-14
Dining.....	15-16
NDSU Bookstore, Academic Policies NDSU ID Card	17
Family Programs, Transportation Services	18
Resource Directory.....	19-21
Notes.....	22

SCAN ME for a PDF version of
the New Student Guidebook



IT ACCOUNTS AND ONLINE SERVICES

NDSU utilizes a variety of technology tools to assist and support learning. Each tool is accessed with one of two information technology accounts: North Dakota University System (NDUS) ID or Bison Login. Both accounts must be claimed or activated following the steps at kb.ndsu.edu/99739. The online services listed below are grouped by what account you will use to access them.



NORTH DAKOTA UNIVERSITY SYSTEM (NDUS) ID



Campus Connection

ndsu.edu/onestop/connect

Manage accounts, financial aid and registration processes.

Blackboard

kb.ndsu.edu/103372

The central hub for all course communications, assignments and materials. Many other technologies are integrated within Blackboard.

Email

kb.ndsu.edu/97800

Email is the official means of communication at NDSU. Check it frequently for important emails from university departments and officials. Activate and check your NDSU email as soon as possible.

MULTI-FACTOR AUTHENTICATION (MFA)

kb.ndsu.edu/99732

Two steps are necessary to verify identity before accessing NDSU technology platforms. In addition to an IT account, users must verify their identity through mobile phone, tablet or landline using Duo.

BISON LOGIN



Bison Bucks

kb.ndsu.edu/97695

A free campus debit account tied to your NDSU ID card that may be used at retail dining, NDSU Bookstore, Herd Shop, vending and more.

Handshake

career-advising.ndsu.edu/handshake

Discover employment and internship opportunities, find out about career fairs, manage application materials, connect with employers, learn about industry trends and salaries and explore on-campus jobs, part-time positions and full-time job opportunities.

Computer Labs

kb.ndsu.edu/100682

IT supports 46 public computer labs and 21 department specific computer labs.

MyNDSU

myndsu.ndsu.edu

Find student organization information and contacts and view campus events.

Library Services

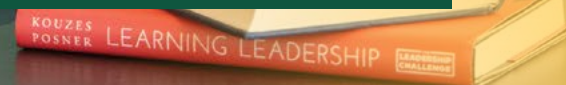
library.ndsu.edu

Access research guides, online data and online requests.

Wired/Wireless Network

kb.ndsu.edu/98167

A one-time device setup is required to connect wirelessly from anywhere on campus.





ACADEMIC COLLEGES

nds.edu/academics

NDSU has five distinct academic colleges each consisting of various academic departments with a variety of majors and minors. Each college has opportunities and support for students and faculty who are experts in their fields. View the academics website for a full list of majors and minors.

- » College of Agriculture, Food Systems and Natural Resources
- » College of Arts and Sciences
- » College of Business
- » College of Engineering
- » College of Health and Human Sciences



EXPLORATORY AREAS

Many students wait to declare a major until after they have explored some options. The Career and Advising Center has five Exploratory Areas that can help you investigate majors that align with your interests, strengths and goals, which later helps you decide a major that's right for you. The courses within exploratory areas cover requirements common to most majors within a particular area.

Exploratory areas include:

- » Business Studies
- » Health and Life Sciences
- » Liberal Arts, Communication and Design
- » Social Science, Human Services, and Education
- » STEM

HELPFUL APPS



ATHLETICS APP

Follow your favorite teams with notifications, streaming, scores and stats, and interactive social media.



MATBUS APP

Live bus tracking, real-time detour info, route planning and weather updates.



DUO MOBILE

Make multi-factor authentication of IT accounts easy with a tap on your phone.



NDSU DINING

View menus, nutrition and allergy information and hours of operation.



GET MOBILE

Manage Bison Bucks, NDSU Dining meal plans, printing allocation and more.



PASSPORT APP

Extend your parking time and receive notifications on time remaining.



HANDSHAKE APP

Discover jobs and internships, view career fairs and events, connect with employers, get curated job recommendations.



PATHLIGHT APP

Enhances safety and allows for quick police response in the event of an emergency.



WELLNESS CENTER

Stay informed of hours, intramural registration and events, GroupFIT classes and more.

ACADEMIC POLICIES

catalog.ndsu.edu/academic-policies

FAMILY EDUCATIONAL RIGHTS AND PRIVACY ACT (FERPA)

catalog.ndsu.edu/academic-policies/ferpa

The federal Family Educational Rights and Privacy Act (FERPA) protects academic and financial information from being released to third parties, including parents/guardians. Certain non-sensitive demographic information is releasable to third parties upon request without the consent of the student. For a listing of these information categories, refer to the FERPA website. A student can restrict this non-sensitive information from being released with a written request to the Office of Registration and Records.

Students may consent to release financial and/or academic records to individuals of their choosing by completing the FERPA Release form on Campus Connection by clicking on the eForms tile. This will allow a designee to obtain financial and/or academic information via phone, mail or email. Completing the FERPA release does not provide electronic access to records.

If there is a desire for third-party or proxy viewable access to certain Campus Connection pages, students can delegate access. Instructions for both the students and the third party are available at ndsu.edu/onestop/connect/delegated_access.

Scholastic Standing

Academic progress is measured by grades and credits earned. To be eligible to register without conditions, you must achieve/maintain good academic standing. This is defined as a minimum cumulative GPA of 2.0. Some programs of study have academic standards higher than the university minimum, and students should consult with their academic advisor for specific requirements.

Math/English Placement

Placement of students into entry-level math and English courses is determined by the NDSU math placement survey and NDSU English placement survey or by approved placement exam scores. More information is available at ndsu.edu/orientation/placement.

Transfer and Test Credit

In addition to credits earned at NDSU, students may have college-level credit by other means. Transfer credits may come from other colleges and universities (including those that administer Dual Credit, PSEO and College in the Schools), by examination (such as AP or CLEP) and by military courses. Transfer credit evaluations must be conducted to determine if the credits earned elsewhere are equivalent to those at NDSU. The resulting Transfer Credit Report, viewable in Campus Connection, will show the credits earned and NDSU equivalency.

Dates and Deadlines

ndsu.edu/onestop/dates-and-deadlines

Students are responsible for all registration and financial activity on their accounts, and these activities have important dates and deadlines.



DEGREE REQUIREMENTS

nds.edu/registrar/academics/curricula

Every degree program has an official curriculum guide that details exactly what requirements are necessary to earn the degree. There are also four-year sample plans of study that outline typical courses by semester and year.

General Education Requirements

catalog.ndsu.edu/academic-policies/undergraduate-policies/general-education

All students, regardless of major, must complete 39 general education credits to ensure they acquire the knowledge, perspectives and skills associated with a university education. Some general education courses also may count toward college/department and major requirements. There are seven categories of general education courses, and each has a set number of credits that must be completed.

- Communication (12 credits)
- Social and Behavioral Sciences (6 credits)
- Wellness (2 credits)
- Quantitative Reasoning (3 credits)
- Cultural Diversity (fulfilled in combination with other categories)
- Science and Technology (10 credits)
- Global Perspectives (fulfilled in combination with other categories)
- Humanities and Fine Arts (6 credits)

College/Department Requirements

Each college and academic department may have specific requirements to earn a degree. These will be outlined in the curriculum guide for each academic program.

Major Requirements

Major course requirements ensure students gain deeper knowledge in their specific majors. These also are outlined in the curriculum guide for each academic program.

ACADEMIC ADVISING

career-advising.ndsu.edu

Academic Advisors

Academic advisors assist students with selecting courses, interpreting university policies, understanding degree requirements, identifying campus resources and making informed choices regarding academic and career plans. Each student is assigned an academic advisor according to the student's chosen major. Undeclared or exploratory students are assigned an advisor from the Career and Advising Center. Find your assigned academic advisor in the "Academic Progress" tile in Campus Connection.

Academic Requirement Report

nds.edu/onestop/help/requirements

Track degree progress using the Academic Requirement Report within Campus Connection. You and your advisor will be able to see what courses have already met requirements, what courses and requirements still need to be completed and plan for courses in future semesters. The report will generate for primary major and minor programs of study and even has a "what if" feature if you are considering a change of major/minor.

Bison Advise

career-advising.ndsu.edu/bisonadvise

Bison Advise is a platform designed for students and advisors to collaborate on academic planning and registration. It allows students to schedule advising appointments, access past communications, and work with advisors to develop semester-by-semester plans, ensuring a clear path towards graduation.

COURSE REGISTRATION

nds.edu/registrar/registration

Course registration is completed in Campus Connection. It is important to speak to your academic advisor prior to course registration. Current students can look in Campus Connection for their registration appointment times and resolve any holds that may prevent registration.

Schedule Planner

This tool within Campus Connection conveniently helps you build your class schedule and even generates different possible schedules from which to choose.

Add and Drop Courses

You may change your schedule by adding or dropping courses. Log into Campus Connection and click on the "Manage Classes" tile. If adding, click on "Class Search and Enroll." If dropping, click on "Drop Classes." Follow the steps provided to complete the transaction. Be sure to check drop/add deadlines to ensure these transactions take place within the acceptable timeframe.

Waitlists

When a class is full, a waitlist may be created. You may place yourself on the waitlist, and the system will add students to the course in the order they were added. You can view your position on the waitlist, and also may remove yourself from the waitlist by "dropping" the course. It is your responsibility to check your class schedule to see if the course has been added. Waitlists close two days prior to the add/drop deadline.

Withdrawing

nds.edu/registrar/registration/withdrawing

Withdrawing means removing enrollment in ALL classes. If your plans change and you must withdraw, you must submit a "Cancel/Withdraw to Zero" form in Campus Connection by clicking on the eForms tile. All students should speak with their academic advisor or One Stop staff before withdrawing.





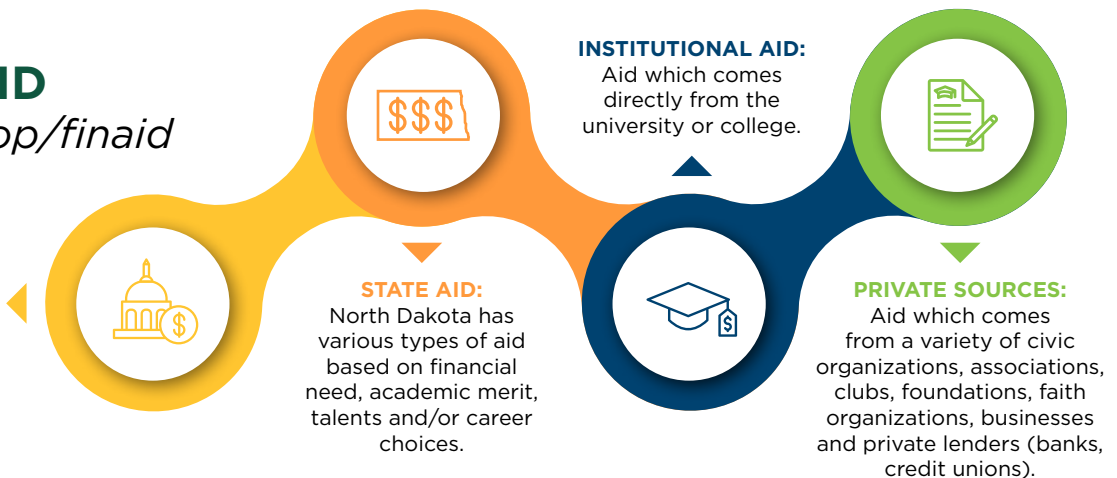
FINANCING YOUR EDUCATION

Financial aid helps cover educational expenses including tuition, fees, books, course materials, supplies and equipment, plus living expenses, like food, housing and transportation. It's important to be informed and have a plan for covering the cost of your education. Staff from the NDSU Financial Aid and Scholarships Office and One Stop can assist you with financial aid questions.

SOURCES OF FINANCIAL AID

ndsu.edu/onestop/finaid

FEDERAL FINANCIAL AID: Federal aid comes from the U.S. Department of Education and is the largest source of financial aid. There is a wealth of information about federal financial aid at studentaid.gov.



TYPES OF FINANCIAL AID

ndsu.edu/onestop/finaid

Grants: These funds do not require repayment and are awarded to students who demonstrate financial need.

Federal Loans: These are federal funds which must be repaid with interest after you graduate, enroll less than half-time or cease enrollment. Subsidized loans do not accrue interest while you are enrolled at least half-time. Unsubsidized loans do accrue interest beginning the date funds are disbursed to your account.

Private Education Loans: A co-signer with good credit is required for most private education loans (check with your lender of choice). Private education loans accrue interest once

funds are released by the lender. Repayment options will vary by lender.

Scholarships: These are funds you may apply for which are awarded based on special talents, skills, academic achievement or financial need. First-time, freshman and transfer scholarships are administered through NDSU Office of Admission.

Work-Study Awards: These are funds you may earn by working on or off campus for an approved work-study employer. Money earned is paid directly to the student in the form of a paycheck and doesn't count against you for financial aid purposes.



FINANCIAL AID CHECKLIST

ndsu.edu/onestop/finaid

Refer to the **Financial Aid Guide for New Students** at ndsu.edu/onestop/finaid for detailed steps related to items below:

- Respond to your financial aid offer through Campus Connection
 - Claim your account and log into Campus Connection
 - Review holds and your “TO-DO” list
 - Review your financial aid offer (federal loans and Work-Study)
 - Estimate your bill
 - Accept, reduce or decline aid offered
 - Report external scholarships/awards
 - Submit scholarship checks to NDSU One Stop
- Complete Loan Entrance Counseling and the Master Promissory Note if accepting a federal direct loan(s)
- Review options and resources to help cover expenses; apply for a private loan if needed.
- Enroll in direct deposit
- Complete the FERPA Consent to Release form and set up an Authorized Payer, if desired.

UNDERSTANDING COST OF ATTENDANCE

ndsu.edu/onestop/account/tuition

A Financial Aid Cost of Attendance (COA) Budget is an estimate of educational expenses and is used to determine financial aid and loan eligibility. The types of educational expenses included in the COA are determined by law. In addition to the expenses included in the COA, you should also plan for indirect costs related to attending college such as insurance and personal items.

What’s included in the COA?

- Books, course materials, supplies, and equipment
- Food and housing
- Loan fees
- Transportation
- Tuition
- Fees
- Miscellaneous personal expenses

What factors influence the COA?

- State, province, or country of residence
- Number of enrolled credits
- Academic program (some programs have a higher tuition)

APPLY FOR FINANCIAL AID

studentaid.gov

The first step in the financial aid process is to complete the Free Application for Federal Student Aid (FAFSA), which determines eligibility for federal funds as well as many state and institutional funds. The FAFSA form is available online (studentaid.gov) beginning Oct. 1 for the following school year. It is important to complete the FAFSA as soon as possible for each academic year you are enrolled to be considered for federal aid.

SATISFACTORY ACADEMIC PROGRESS

ndsu.edu/onestop/academic-progress-academic-standing

You must meet the Standards of Satisfactory Academic Progress (SAP) to receive federal financial aid. Requirements include earning a minimum cumulative GPA of 2.0 and successfully completing two-thirds (67%) of the cumulative attempted credits. If you do not meet SAP, you will be placed on Financial Aid Warning. If SAP is still unmet after your semester of warning, you will be placed on Financial Aid Disqualification, and will lose your eligibility for federal financial aid.

CAMPUS EMPLOYMENT

career-advising.ndsu.edu/handshake

Part-time jobs are available to all students with or without a federal work-study award. Go to HANDSHAKE to look for available jobs both on and off campus and follow the posted instructions to apply.

CHANGES TO YOUR FINANCIAL AID OFFER

NDSU is required by federal regulations to adjust your offer based on additional information that may become available. You will receive notification via your NDSU email account if there are revisions to your financial aid offer.

CUSTOMER ACCOUNT SERVICES

Customer Account Services facilitates the processes used for billing and collecting costs associated with attending NDSU.

NET PRICE CALCULATOR

ndsu.edu/onestop/financial/netpricecalculator

Estimate your expenses and financial aid online.

BILLING STATEMENTS

ndsu.edu/onestop/billing-and-payments

Billing statements are not mailed to you, however you may view your account balance anytime on Campus Connection. Additionally, monthly e-bill notifications are sent to your NDSU email account. You also may sign up for text message reminders.

It is your responsibility to confirm the accuracy of your charges. Financial aid is applied to your account approximately two weeks into the semester. Payment on the remaining balance can be made a variety of ways:

- **Pay online** by electronic funds transfer or credit card via Campus Connection. Credit card transactions are assessed a non-refundable service fee of 2.75%.
- You may set up an **authorized payer** to make online payments.
- **Pay in person** at NDSU One Stop in the Memorial Union (cash or check only)
- **Mail checks** to NDSU One Stop; Dept. 3110; PO Box 6050; Fargo, ND 58018-6050.

Alternative methods are available as well:

- Enroll in a **payment plan** by the semester due date and divide your responsibility into three monthly installments.
- **Third parties** (i.e. National Guard or Vocational Rehab) may pay tuition. Please notify One Stop with documentation prior to the start of the semester.

PAYMENT PLANS

ndsu.edu/onestop/payment-plan

Payment plans are available to help students spread their financial responsibility over a period of a few months rather than making payment in a single lump sum. Available plan options will appear in the online payment portal within Campus Connection shortly before the start of the semester. Students must enroll within the first few weeks of the semester and a \$30 non-refundable enrollment fee is due at that time. Down payments to reduce the amount of the monthly installments are strongly encouraged. Payments are made automatically on the due date each month.

NDSU DATES AND DEADLINES

ndsu.edu/onestop/dates-and-deadlines

It is your responsibility to make payment by the published deadline. Failure to do so may result in late fees, enrollment and/or transcript holds or the cancellation of registration.

DROPPING COURSES OR WITHDRAWING TO ZERO CREDITS

ndsu.edu/onestop/effects-dropping-or-withdrawing

DROPPING A COURSE:

When dropping a class, you will remain enrolled in other classes. Classes may be dropped via Campus Connection and results in a 100% or no refund of tuition/fees, depending on the timing of the drop. It is important that students make their drop decisions early in the semester as there are no partial refunds for dropped classes.

OR

WITHDRAWING TO ZERO CREDITS:

Withdrawing means that you are terminating enrollment in all courses. You must submit a "cancel/withdraw to zero" form in Campus Connection by clicking on the eForms tile. Withdrawal results in a 100%, 75%, 50% or zero refund of tuition/fees, depending on the timing of the withdrawal. You may be required to repay a portion of the financial aid received for the term if withdrawal occurs after financial aid disbursement. All students should speak with their academic advisor or One Stop staff before withdrawing.

AUTHORIZED PAYERS, DELEGATE ACCESS AND FERPA

ndsu.edu/onestop/third-party-and-family-member-student-account-access

Students may provide access to their accounts in a variety of ways:

- Authorized users have permission to make online payments on behalf of the student, but do not have access to account details.
- Users with delegated access are granted permission to view specific student account pages and data within Campus Connection.
- Individuals with a FERPA Release Form on file are allowed to contact NDSU staff to discuss financial and/or academic information.



STUDENT RESPONSIBILITIES

- Keep track of your Campus Connection account activity such as registration, balances and financial aid.
- Check your Campus Connection to-do list and complete any tasks listed there to avoid account holds.
- If you decide to drop a course or withdraw from the university, be sure to check deadlines and follow procedures. It's best to consult with your academic advisor before taking these steps.
- Make a plan before the semester begins for paying any costs not covered by financial aid and scholarships. Your plan might include applying for private loans.
- Make payments on time. If a third party is making payments, make sure they have correct information and access. If someone will make payments for you, be sure to set up authorized payer access through Campus Connection.
- Check that your contact information is correct in Campus Connection.



STUDENT POLICIES AND EXPECTATIONS

Code of Conduct Policy

nds.edu/policy (section 6, policy 601)

All students are expected to know and follow the policies and procedures within the Code of Student Conduct.

Substance Free Campus

nds.edu/policy (section 1, policies 153 and 155)

NDSU has a genuine caring concern for the community and recognizes the misuse and abuse of alcohol and other drugs can limit academic, personal and career achievement. For this reason, alcohol, marijuana, other drugs and smoking of cigarettes and e-cigarettes is prohibited. Please reference the link for the most up-to-date version of policy 153.

Community of Respect

nds.edu/policy (section 1, policy 100)

NDSU is committed to providing a safe and non-discriminatory learning, living and working environment for every member of the university community. NDSU prohibits discrimination and harassment on the basis of age, color, gender expression/identity, genetic information, marital status, national origin, physical or mental disability, pregnancy, public assistance status, race, religion, sex, sexual orientation, spousal relationship to current employee or status as a U.S. veteran.



You'll get a well-rounded education that prepares you for lifelong learning, including self-discovery and growth, healthy connections with others, and learning from and respecting differences. NDSU has many opportunities to engage with and contribute to the community.



Campus Attractions

nds.edu/studentactivities/campus_attractions

This student-run board provides unique and entertaining programming opportunities. Get involved by attending events or consider becoming a board member. Committee membership is open to all NDSU students.

Fraternity and Sorority Life

nds.edu/studentactivities/fraternity_sorority_life

Fraternity and sorority members are guided by four values: scholarship, leadership, service and brotherhood and sisterhood. Our community is more than 100 years old and members report a stronger sense of belonging on campus and have higher GPAs than non-affiliated members. If interested in learning more and how to join, please email nds.sao@nds.edu.

Leadership Programs

nds.edu/studentactivities/leadership_programs

Interactive leadership programs and workshops enhance real-world skills and career readiness.

Office of Multicultural Programs

nds.edu/multicultural

Multicultural student organizations connect students, and cultural events engage the campus community.

LGBTQ+ Programs

nds.edu/lgbtq

Students can join groups and attend events that advance the inclusion and support of people who identify as LGBTQ+ or as allies.

Reserve Officer Training Corps (ROTC)

Air Force ROTC Army ROTC
nds.edu/afrotc nds.edu/armyrotc

Earn credits, enhance your leadership and gain the experiences necessary to help you succeed in any competitive environment.

Residence Life Leadership

nds.edu/reslife/leadership

With many leadership opportunities, students connect with their local, regional and national peers.

Student Organization and Club Sports

mynds.ndsu.edu

More than 250 student organizations and club sports provide a variety of academic, athletic, cultural and recreational involvement opportunities.

Study Abroad

global.ndsu.edu

Transform your education through experiential global learning. Expand your horizons, explore new cultures, and create lifelong memories while earning credits. Begin your global journey today.

Student Government

nds.edu/sg

Student Government represents and advocates for the student body of NDSU. Students of all leadership and experience levels are welcome to apply to be part of the team.

Volunteer Network

nds.edu/studentactivities/volunteernetwork

Volunteer Network connects individuals and groups with non-profit partners to engage in service that meets the needs of our community while also planning events around civic and social challenges.



RESIDENCE LIFE

Life

ndsu.edu/reslife

THE RESIDENCE LIFE EXPERIENCE

More than just a bed, Residence Life provides a place to grow, learn, connect, explore and make an impact. You create the experience you want.

Why students love to
#LIVewithTHEHERD

LIVE CLOSER

The convenience of living on campus can't be beat.

LIVE SMARTER

Students who live on campus have higher GPAs on average and are more likely to graduate in four years than those who live off campus.

LIVE CONNECTED

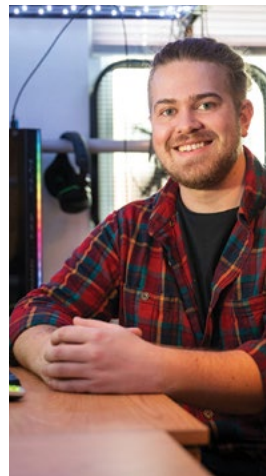
Friends, on-campus activities, campus resources, on-campus dining—living on campus keeps you close to the things you value.

LIVE SUPPORTED

Live next door to your friends and surround yourself with professional support systems like campus staff, faculty and campus resources.

LIVE SECURE

24-hour keycard secure entrances, entrance security cameras, onsite staff and university police access and coverage offer added safety.





Preparing to Move In

Review your room assignment as well as roommate's name and email address in your housing portal at ndsus.edu/reslife/portal. Check out ndsus.edu/reslife/movein for the following information:

- Move-in day details
- Sign up form for move-in day time slots (fall semester only)
- Room dimensions, bed size, lofting options and amenities
- Packing guidelines
- Driving and parking directions for move-in day
- Frequently asked questions

Make an Impact

ndsus.edu/reslife/leadership

Help create the experience you want in your hall - plan events, make your voice heard and make a difference across campus and in the community. Residence Life provides many ways to get involved.

Hall Government | Residence Hall Association | National Residence Hall Honorary | LEAD

Upper-division Student Living

Residence Life is more than a first-year experience. Transfer and returning students can choose from modern apartment living to state-of-the-art residence halls and enjoy the conveniences of living on campus. Student-friendly apartment contracts provide maximum flexibility to fit your needs.

»»»»» **STAY IN**
THE KNOW

Follow @ndsureslife on Facebook and Instagram to learn about hall events, important dates and Residence Life features.



SUPPORTING YOUR WELL-BEING





STUDENT HEALTH SERVICE

ndsu.edu/studenthealthservice

Your Campus Clinic and Pharmacy

Located in the Wallman Wellness Center, our team of highly qualified professionals supports the health and well-being of our diverse student population by providing the following health services to enrolled students:

- General health/medical care (primary, acute, chronic and preventative)
- Immunizations
- Mental health care
- Medical laboratory
- Pharmacy
- X-ray
- Dietitian
- Health promotion
- Sexual assault prevention and advocacy

Immunization Requirements

ndsu.edu/studenthealthservice/patient_resources/immunizations_1

Students must meet immunization requirements that include the following:

- All students: Two doses of measles, mumps, rubella (MMR) starting after age 1.
- All students 21 years old and younger: One dose of Meningococcal Conjugate ACWY given after age 16.

Submit records:

- Upload through the Student Health Portal
- Email ndsu.immunizations@ndsu.edu
- Fax 701-231-6132

Flow on the Go

This program provides NDSU students with FREE menstrual hygiene products and education to NDSU students living on or off campus. Students can submit their requests online at bit.ly/NDSTFlow. Funding support provided by Student Government.

Junk Mail

This program provides FREE safer sex materials and education to NDSU students living on or off campus. Students can submit their request online at bit.ly/NDSTjunkmail. Funding provided through a grant from the ND Department of Health.

COUNSELING CENTER

ndsu.edu/counseling

The Counseling Center provides free services in a confidential setting in which students may explore academic or personal concerns that may prevent them from functioning at their optimum levels. Services include crisis intervention, personal counseling, academic counseling, groups, workshops, and stress and depression assessment.



NDSU CARE TEAM

ndsu.edu/deanofstudents/student_advocacy

Anyone who is concerned that a student may be in distress may contact the NDSU Care Team. Care Team referrals connect students with a licensed social worker who helps students assess their needs and develop a care plan. The individualized care plan may include assisting with coordination of services on and off campus, advocating and monitoring progress.

WELLNESS CENTER

ndsu.edu/wellness

The Wellness Center is a state-of-the-art facility that fosters community and inspires healthy lifestyles through a variety of programs and services that appeal to all fitness levels and recreational interests. The mandatory Wellness Fee funds the Wellness Center and grants you access to many features, including:

- Intramurals*
- 33-foot climbing wall
- Basketball and racquetball courts
- Leisure and lap pools
- Sauna and hot tub
- Safety education courses
- Group fitness classes
- Personal training*
- Outdoor Adventures*
- Cardio and strength equipment
- Cycling and martial arts studios
- Walking and running tracks
- Child care service*

* *additional fees*

UNIVERSITY POLICE

ndsu.edu/police_safety

The University Police are responsible for 24/7 law enforcement, public safety duties and emergency response. An annual security report is available on the University Police website.

- Pathlight
 - This is a smartphone app to help you reach your destination safely.
- Campus Safety Escort Services
 - NDSU police and/or public safety officers provide escorts as a personal safety and security service.
- Campus Emergency Notification Systems
 - CENS is how NDSU informs the campus community about campus closures or emergencies. Communication will include specific instructions or recommendations for safety. Make sure your emergency contact information is up-to-date in Campus Connection.

D I N I N G



ndsu.edu/dining

THE DINING EXPERIENCE

NDSU offers an unparalleled dining experience. With three dining centers, four coffee shops and a food court, we can satisfy every craving and keep you coming back for more.



MEAL PLAN OPTIONS

- **Unlimited Access Meal Plans:** Incoming first-year students living in a residence hall must select a five-day (Monday-Friday) or seven-day (Monday-Sunday) meal plan. These plans allow unlimited access to all three dining centers.
 - The five-day plan is only recommended for students who plan to leave campus every weekend. The seven-day plan is only \$16 more per weekend.
- **Block Meal Plans:** Block plans are available for purchase in increments of 25 and can be used at nine locations on campus. Block plans are popular for upperclassmen and off-campus students.

DINING CENTERS

Providing all-you-care-to-eat, our dining centers offer a wide array of options like homestyle classics, global cuisine, do-it-yourself grills and expansive salad, sandwich and panini bars. Expert culinary team members, including registered dietitians, are available to meet with students with special dietary needs.

- **West Dining Center** is a tree nut- and peanut-free facility connected to Cater, Pavek, Seim, Sevrinson and Thompson halls. Unique features include wood-stone pizza, in-house bakery and Clean Eats—a station that offers all menu items free from the top nine allergens.
- **Residence Dining Center** is connected to Reed/Johnson and Weible halls. Distinctive features include Creations, a station where you fully customize your meal, and Bison Beanery, a full-service coffee shop that offers all your coffee favorites at no extra charge.
- **Union Dining Center** is located in Memorial Union. It offers a convenient location and cozy home environment.

Menus: Visit ndsudining.com/menu or download the NDSU Dining App to view menu and nutrition information.



FOOD COURT AND COFFEE SHOPS

- **Food Court:** Located in the lower level of the Memorial Union, the food court offers a variety of options including sandwiches, burgers, salads, Tex-Mex and Chinese food.
- **Coffee Shops:** Now including a Caribou Coffee and a Proudly Serving Starbucks location, campus offers four full-service coffee shops.



STAY
connected

Like free stuff? Follow @ndsudining on Facebook, TikTok and Instagram to learn about dining specials, features and giveaways.



NDSU bookstore

NDSU BOOKSTORE

ndsubookstore.com

College is a big step, and having questions regarding books, computers, and supplies is certain. NDSU Bookstore staff understands that discussing them is critical for your success. Stop by the store, call or email to visit with their team of professionals.

The NDSU Bookstore provides educational pricing on technology, which equals DISCOUNTS FOR YOU! It also has an on-site technician to help with issues or repairs.

There are a variety of jobs with the NDSU Bookstore that work around your class schedule, include a discount on your favorite Bison gear, and give you resume-building experiences. Search for jobs on Handshake.

QUESTIONS

Email: ndsu.bookstore@ndsu.edu
Phone: 701-231-7761

FOLLOW US

Get updates on our latest looks and never miss our deals! Follow @NDSUBookstore on Instagram, Facebook, and X.



Authorized
Campus Store



Authorized
Reseller

Shop for officially licensed merchandise online or visit us at our convenient location in the NDSU Memorial Union.

NDSU ID CARD

ndsu.edu/it/help/card_center

Your NDSU ID card will be used in many ways across campus:

- Entry into your residence hall, dining centers and the Wallman Wellness Center
- Use the GET App on your mobile device for card account management
- Charge books to your account at the NDSU Bookstore
- Checkout library materials
- Ride the MAT bus on and off campus
- Access printing allocation
- Make purchases using Bison Bucks
- Use as a U.S. Bank ATM/Debit Card (when linked to a U.S. Bank checking account)

→ For US Bank, we have a branch and one ATM in the Memorial Union.

→ For questions and details, go to kb.ndsu.edu/104654.



THUNDAR
BISON

1234567
0000000000000000

NDSU NORTH DAKOTA
STATE UNIVERSITY



FAMILY PROGRAMS

ndsu.edu/familyprograms

NDSU Family Programs helps your supporters navigate the transition to NDSU by keeping them informed and connected. Visit the Family Programs website to sign up to receive the family newsletter, review frequently asked questions and/or to become a member of our Facebook group.



TRANSPORTATION SERVICES

Parking

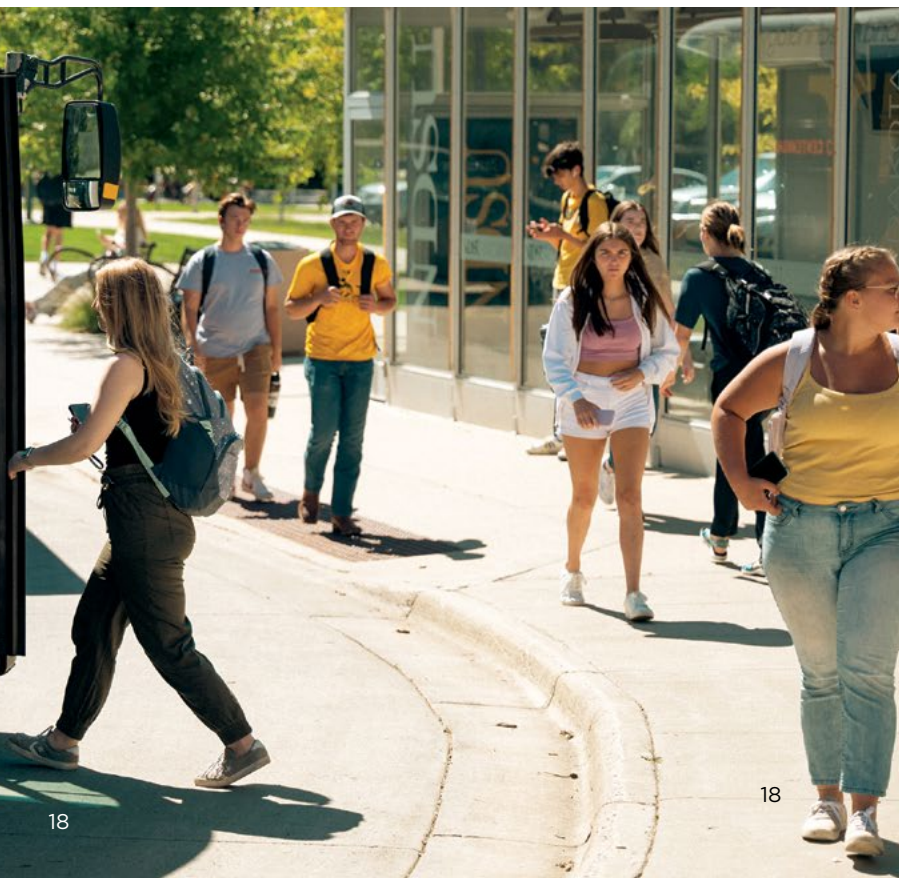
ndsu.edu/parking

Each student is eligible for one parking permit and the location of the assigned lot is determined by the student's residence. Students may purchase a permit at ndsu.edu/parking/permitsales_student. Students can purchase a permit online the following evening after registering for classes. Please refer to the Transportation Services website for NDSU parking regulations.

Metro Area Transit (MATBUS)

ndsu.edu/parking/matbus_transit

Students may ride any MATBUS route within Fargo and Moorhead at no cost by using their NDSU ID card. Due to limited parking, MATBUS is recommended for students with classes at the downtown campus.



RESOURCE DIRECTORY

Take control of your academics by using services early and regularly. The following resources are available through tuition and fees.

ACE Tutoring

By-appointment and drop-in tutoring available for various classes facilitated by academically successful peer tutors
701.231.8379
ndsu.ace@ndsu.edu
ndsu.edu/ace

Career and Advising Center

Academic advising for students exploring majors, information about general education requirements and academic policies, career exploration, job/internship preparation and search assistance
701.231.7111
ndsu.cac@ndsu.edu
career-advising.ndsu.edu

Center for Accessibility and Disability Resources

Reasonable accommodations, information and referrals for students with documented disabilities and/or temporary medical conditions
701.231.8463
ndsu.cadr@ndsu.edu
ndsu.edu/disabilityservices

Center for Writers

One-on-one writing assistance, online information and resources, support for English language learners
701.231.7927
ndsu.cfw@ndsu.edu
ndsu.edu/cfwriters

Counseling Center

Academic skills counseling, personal and emotional counseling
701.231.7671
ndsu.edu/counseling

Dean of Students

Supports all students by addressing their concerns, connecting them to resources and working with campus partners to provide holistic care
701-231-7701
ndsu.edu/deanofstudents

Equal Opportunity and Title IX Compliance Office

Resource for questions, concerns and support regarding equal opportunity, affirmative action and non-discrimination
701.231.7708
ndsu.eoaa@ndsu.edu
ndsu.edu/equity

Faculty, Teaching Assistants (TAs) and Learning Assistants (LAs)

In addition to faculty, some classes have TAs or LAs who can help you understand course material. Visit during office hours (hours designated for student visits) or make an appointment through Bison Advise

International Student and Study Abroad Services

Connects and prepares students for study abroad opportunities
701.231.7895
ndsu.edu/international

IT Help Desk

Assistance with issues related to Blackboard, cyber security, email, internet and wireless, multi-factor authentication, printing, storage and general account maintenance
701.231.8685
ndsu.helpdesk@ndsu.edu
ndsu.edu/it/help





RESOURCE DIRECTORY

(continued)

Learning and Applied Innovation Center

One-on-one assistance with technology-related coursework and projects; audio and video editing and other multimedia resources are available
701.231.5130
ndsulaic@ndsu.edu
ndsu.edu/it/help/laic

LGBTQ+ Programs

Support for students who identify as LGBTQ+ or as allies
701.231.7708
ndsu.edu/lgbtq

NDSU Bookstore

Provides course materials, supplies, technology, apparel and gifts
701.231.7761
ndsbookstore@ndsu.edu
ndsbookstore.com

NDSU Card Center

Student ID card that has a number of uses including access to specific buildings and campus services
701.231.6252
ndsucardcenter@ndsu.edu
ndsu.edu/cardcenter

NDSU Care Team

A team of professional care providers that addresses student concerns, connects students to resources, and provides referrals
701.231.7701
ndsu.edu/deanofstudents

NDSU Dining

Manages three dining centers, a retail food court, coffee shops and meal plans
701.231.7001
ndsudining@ndsu.edu
ndsu.edu/dining

NDSU Libraries

Collections and online databases, research assistance, study rooms and spaces, computers, collaboration space, digital fabrication lab, podcasting and presentation lab, data visualization lab, relaxation room, and reflection room
701.231.8888
library.ndsu.edu

New Student Programs

Supports new students and their loved ones through transition with Orientation and Welcome Week
701.231.8379
ndsuwelcomeweek@ndsu.edu
ndsu.edu/welcomeweek

Office of Multicultural Programs

Connects students to student organizations, cultural events and supports across campus
701.231.1029
ndsulmulticultural@ndsu.edu
ndsu.edu/multicultural

RESOURCE DIRECTORY

(continued)

One Stop

Assistance with transactions involving registration, financial aid, payments and account activity
701.231.6200
ndsu.onestop@ndsu.edu
ndsu.edu/onestop

Parking and Transportation Services

Manages parking permits, lots and regulations as well as student transportation services
701.231.5771
ndsu.parking@ndsu.edu
ndsu.edu/parking

Registration and Records

Academic policy and procedure information, transfer credit evaluation, degree progress tracking and transcript services
701.231.7981
ndsu.registrar@ndsu.edu
ndsu.edu/registrar

Residence Life

Provides campus living options, community building and support staff within the halls
701.231.7557
ndsu.residence.life@ndsu.edu
ndsu.edu/reslife

Student Activities

Offers a variety of campus involvement, connection and leadership opportunities
701.231.7787
ndsu.sao@ndsu.edu
ndsu.edu/studentactivities

Student Health Service

A campus health clinic and pharmacy providing an array of medical services
701.231.7331
ndsu.edu@studenthealthservice
ndsu.edu/studenthealthservice

TRIO Student Support Services

One-on-one tutoring, peer mentoring, guidance from education specialists and small-group instruction for eligible students. Reference the website for eligibility criteria and the program application
701.231.8028
ndsu.edu/trioss

University Police and Safety Office

Law enforcement, public safety and emergency response across campus
701.231.8998
ndsu.police.safety@ndsu.edu
ndsu.edu/police_safety

Veterans Educational Training

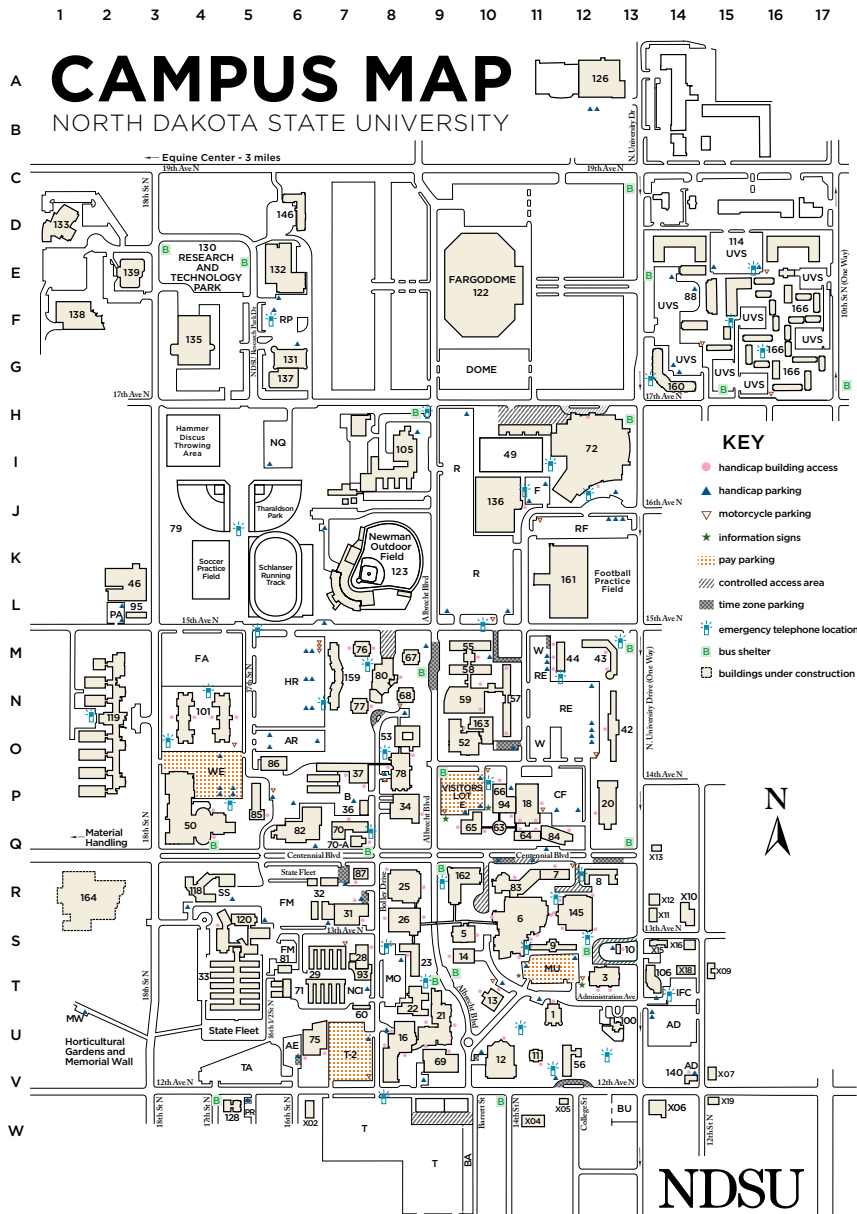
General support and referral services for former and current military and dependent students
701.231.9706
ndsu.edu/vet

Wellness Center

Fitness, recreation and aquatic opportunities to enhance well-being
701.231.5200
ndsu.wellness@ndsu.edu
ndsu.edu/wellness



- R12 145 A. Glenn Hill Center
- S9 14 Agricultural and Biosystems Engineering
- S13 10 Alba Bales House
- N10 163 Aldevron Tower
- T13 106 Alumni Center, Harry D. McGovern
- K2 46 Animal Nutrition and Physiology Center
- E3 139 Appareo - Genesis Building
- E3 138 Appareo - Horizon Building
- V9 69 Askanase Hall
- Barry, Richard H., Hall (811 2nd Ave N)**
- P12 20 Bentson/Bunker Fieldhouse
- I8 105 Biosciences Research Laboratory
- D6 146 Candelwood Suites
- T13 3 Ceres Hall
- P10 66 Civil and Industrial Engineering
- P10 94 Construction Management Engineering
- I11 49 Decotah Field
- N2 119 Dalrymple Research Greenhouse
- P11 18 Dolve Hall
- R11 7 E. Morrow Lebedeff Hall
- Q11 84 Ehly Hall
- Q10 65 Electrical and Computer Engineering
- J3 79 Ellig Sports Complex
- Q11 64 Engineering
- Q10 63 Engineering Administration
- Equine Center (3 miles west of campus on 19th Ave N)**
- E1 122 Fargodome
- Q7 70-A Gate City Bank Auditorium
- V14 140 Graduate Center
- S7 28 Harris Hall
- R7 87 Hastings Hall
- T8 22 Heating Plant
- S8 26 Hultz Hall
- R4 118 Johansen Hall
- G4 135 John Deere Intelligent Solutions Group
- R11 83 Katherine Kilbourne Burgum Family Life, 4-H Center
- Klai Hall (711 2nd Ave N)**
- S9 5 Ladd Hall
- V10 12 Library
- P8 78 Loftsgard Hall
- T7 29 Lord and Burnham Greenhouses
- R14 X10 Lutheran Student Center
- R6 32 Maintenance Buildings
- S11 6 Memorial Union
- U9 21 Minard Hall
- S8 23 Morrill Hall
- U8 16 Music Education Building
- A12 126 NDSCS Fargo
- K8 123 Newman Outdoor Field
- K12 161 Nodak Insurance Football Performance Complex
- T7 93 Northern Crops Institute
- S5 120 Northern Crops Science Laboratory
- U11 1 Old Main
- L2 95 Parking Office
- R2 164 Peltier Complex
- T5 33 Plant Sciences Greenhouse
- U6 71 Potato Research-Pesticide Storage
- W5 128 Prairie Hall
- U13 100 President's House
- U11 11 Putnam Hall
- R8 25 Quentin Burdick Building
- Renaissance Hall (650 NP Ave)**
- G6 131 Research 1
- G6 137 Research 1A
- E6 132 Research 2
- E4 130 Research and Technology Park
- N9 59 Residence Dining Center
- T7 60 Residence Life Facility Services
- P5 85 Robinson Hall
- I12 72 Sanford Health Athletic Complex/Scheels Center
- O5 86 Service Center, Pilot Plant
- J10 136 Shelly Ellig Indoor Track and Field Facility
- P8 34 Shepperd Arena
- T10 13 South Engineering
- Q7 70 Stevens Hall
- W14 X06 St. Paul's Chapel
- O9 52 Sudro Hall
- T6 81 Sugar Beet Research
- R9 162 Sugihara Hall
- D1 133 Technology Incubator
- R7 31 Thorson Maintenance Center
- U6 75 University Police and Safety
- Q6 82 Van Es Hall
- Veterinary Diagnostic Laboratory (4035 19th Ave N)**
- P7 37 Waldron Hall
- Q4 50 Wallman Wellness Center
- O8 53 Walster Hall
- West Building (3551 7th Ave N)**
- M8 80 West Dining Center
- P7 36 Wiidakas Laboratory



- HOUSING UNITS**
- G14 160 Apartment 1701
 - M12 43 Bison Court (East)
 - M12 44 Bison Court (West)
 - V12 56 Burgum Hall
 - M7 159 Cater Hall
 - R12 8 Churchill Hall
 - S11 9 Dinan Hall
 - M10 58 Johnson Hall
 - N4 101 Mathew Living Learning Center
 - D15 114 Niskanen Expansion
 - E14 88 Niskanen Hall
 - N7 77 Pavek Hall
 - M10 55 Reed Hall
 - M7 76 Seim Hall
 - M8 67 Severson Hall
 - N13 42 Stockbridge Hall
 - N8 68 Thompson Hall
 - F15 166 University Village
 - N10 57 Weible Hall (North and South)
- FRATERNITY AND SORORITY HOUSES**
- T15 X09 Alpha Gamma Delta
 - R13 X11 Alpha Gamma Rho
 - V15 X07 Alpha Tau Omega
 - V12 X05 FarmHouse
 - S14 X16 Kappa Alpha Theta
 - S14 X15 Kappa Delta
 - Q14 X13 Kappa Psi Pharmaceutical Fraternity
 - W6 X02 Sigma Alpha Epsilon
 - T14 X18 Sigma Chi

- V15 X19 Sigma Nu
 - W11 X04 Tau Kappa Epsilon
 - R13 X12 Theta Chi
- SELECTED OFFICES**
- T13 3 Admission (Ceres Hall)
 - T13 3 Career and Advising Center (Ceres Hall)
 - A14 117 Counseling Center (Ceres Hall)
 - T13 3 Customer Account Services (Ceres Hall)
 - V10 12 Center for Accessibility and Disability Resources (Library)
 - T13 3 Financial Aid and Scholarships (Ceres Hall)
 - R7 87 Human Resources/Payroll (Hastings Hall)
 - S11 6 NDSU Bookstore (Memorial Union)
 - N9 59 NDSU Dining (Residence Dining Center)
 - S11 6 One Stop (Memorial Union)
 - L2 95 Parking Office
 - T13 3 Registration and Records (Ceres Hall)
 - M12 44 Residence Life (West Bison Court)
 - U11 1 Student Affairs (Old Main)
 - Q4 50 Student Health Service (Wallman Wellness Center)
 - M12 43 Student Loan Services (East Bison Court)
 - U6 75 University Police
 - S8 23 Veteran Resource Center