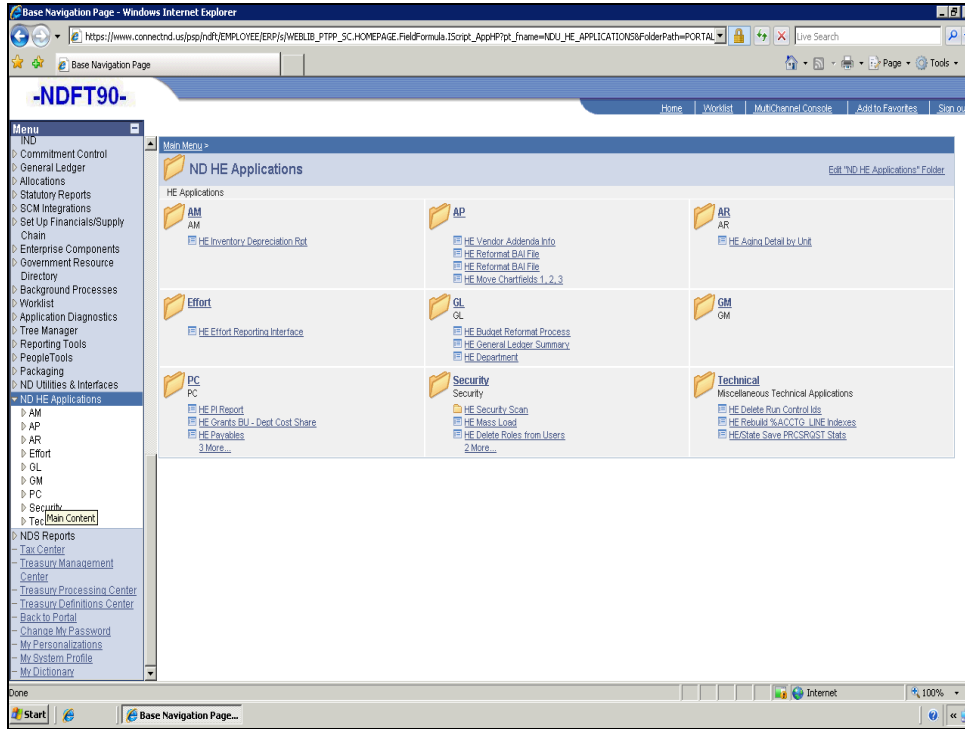
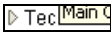

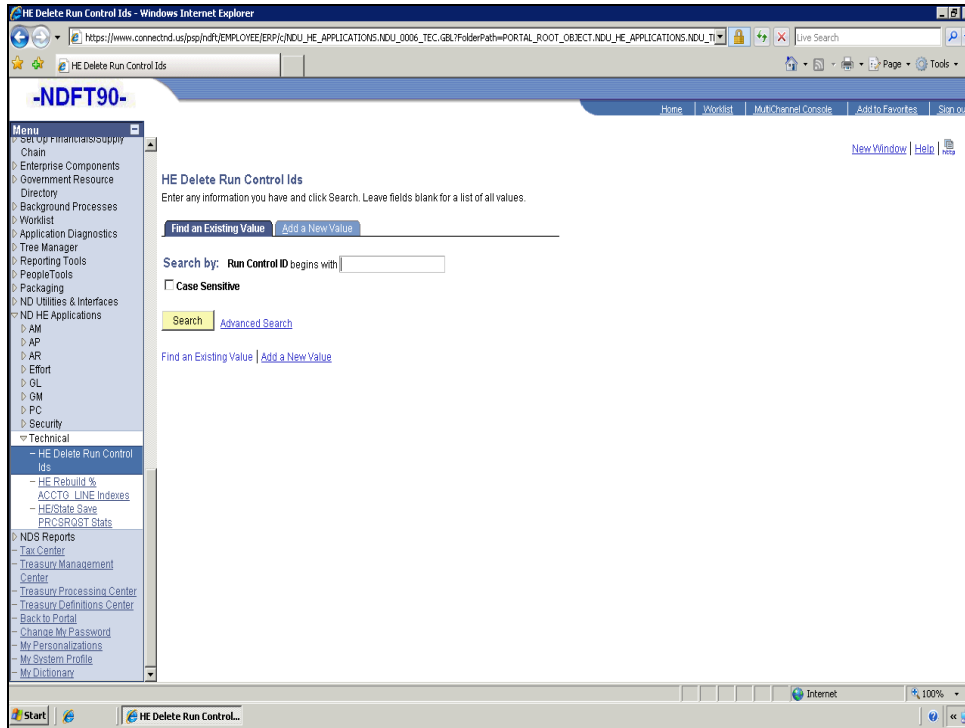



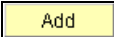
Higher Ed: Deleting Run Control ID's

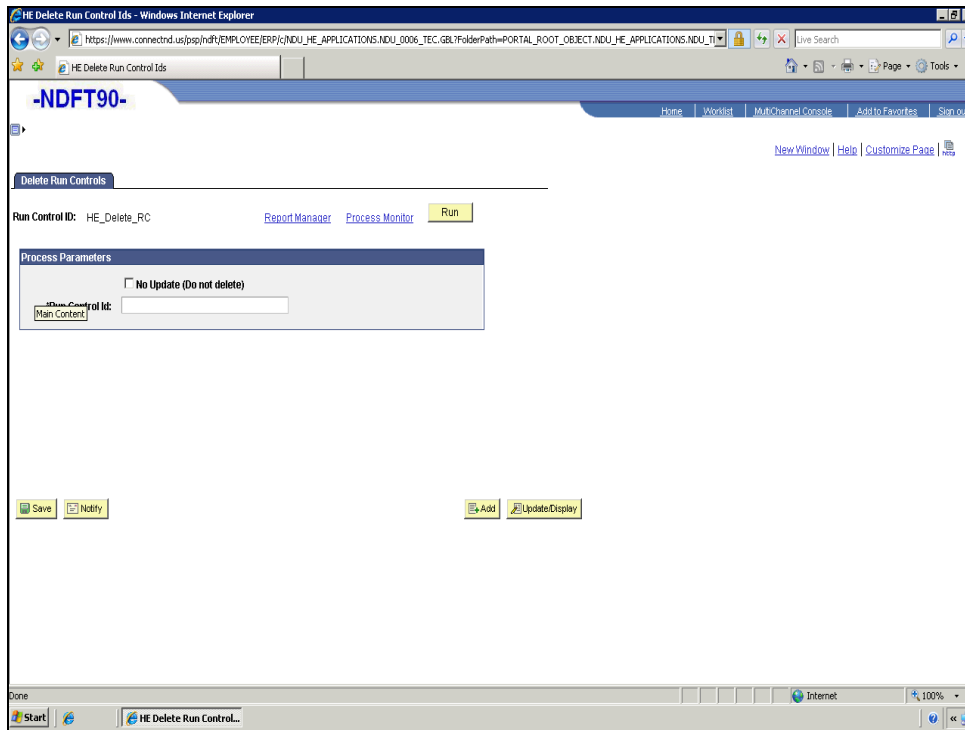
Navigation: HE Applications, Technical, HE Delete Run Control ID's

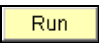


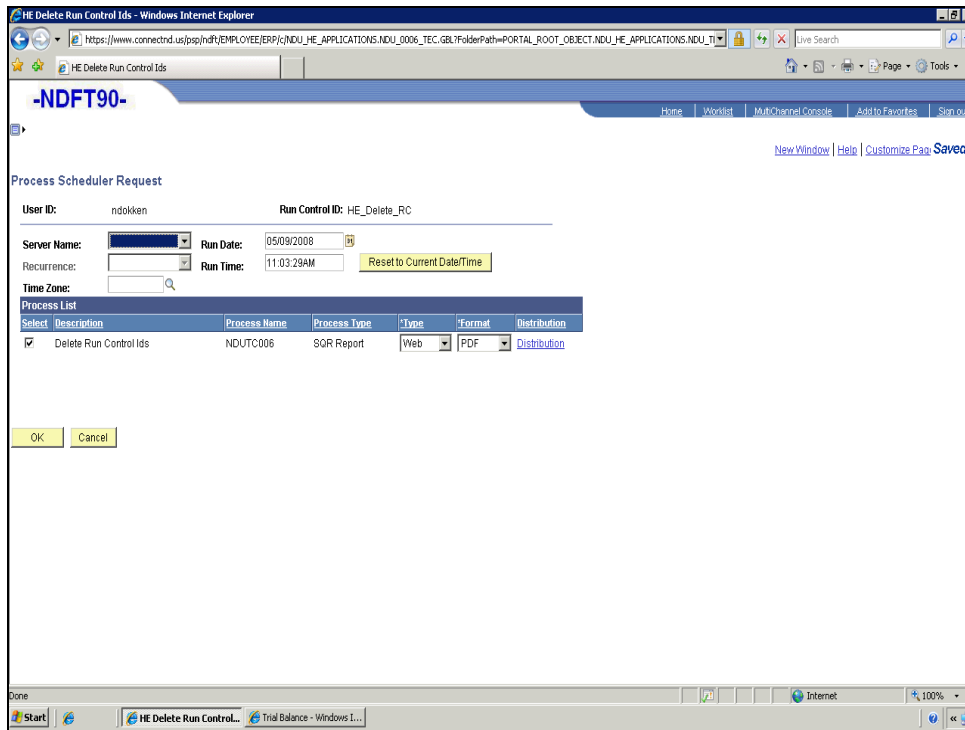
Step	Action
	<p>Click the Technical link.</p> <p></p>
	<p>Click the HE Delete Run Control Ids link.</p> <p></p>



Step	Action
	Click the Add a New Value tab. 
	Enter the desired information into the Run Control ID field. Enter " HE_Delete_RC ".
	Click the Add button. 



Step	Action
	<p>The run control must not have been used in the last 60 days and must have the exact spelling/spacing. Copy and pasting works well. Point to the Run Control Id field.</p>
	<p>Click the Run button.</p> 



Step	Action
	Click the OK button. 