

Standard No. 18: Faculty and Staff—Quantitative Factors: The college or school has a cohort of faculty and staff with the qualifications and experience needed to effectively deliver and evaluate the professional degree program.

1) **Documentation and Data:**

Required Documentation and Data:

Uploads:

- Organizational chart depicting all full-time faculty by department/division **(Upload 18.1)**
- ACPE Faculty Resource Report related to number of full-time and part-time faculty. Template available for download. **(Upload 18.2)**
- List of faculty turnover for the last 5 years, by department/division, with reasons for departure **(Upload 18.3)**
- Description of coursework mapped to full-time and part-time faculty teaching in each course **(Upload 18.4)**

Required Documentation for On-Site Review:

- List of voluntary faculty, with academic title/status and practice site; specify IPPE and/or APPE **(Upload 18.5)**

Data Views and Standardized Tables:

It is optional for the college or school to provide brief comments about each chart or table (see Directions).

- List of key university and college or school administrators, and full-time and part-time (≥ 0.5 FTE) faculty, including a summary of their current academic rank, primary discipline, title/position, credentials, post-graduate training, and licensure (if applicable)
- AACP Standardized Survey: Faculty – Questions –25, 30
- Table: Allocation of Faculty Effort (total for all faculty with ≥ 0.5 FTE) [see example table at <http://www.acpe-accredit.org/pdf/Excel%20Documents/AllocationFacultyEffort.xls>]
- Table: Distribution of Full-Time Pharmacy Faculty by Rank and Years in Rank

Optional Documentation and Data

- Other documentation or data that provides supporting evidence of compliance with the standard

2) **College or School's Self-Assessment:** Use the checklist below to self-assess the program on the requirements of the standard and accompanying guidelines:

	S	N.I.	U
18.1. Sufficient faculty – The college or school has a sufficient number of faculty members to effectively address the following programmatic needs:		●	○
• Teaching (didactic, simulation, and experiential)	●	○	○
• Professional development	●	○	○
• Research and other scholarly activities	●	○	○
• Assessment activities		●	○
• College/school and/or university service	●	○	○
• Intraprofessional and interprofessional collaboration		●	○
• Student advising and career counseling		●	○
• Faculty mentoring	●	○	○
• Professional service	●	○	○
• Community service	●	○	○
• Pharmacy practice	●	○	○
• Responsibilities in other academic programs (if applicable)	○	○	○
• Support of distance students and campus(es) (if applicable)*	○	○	○
18.2. Sufficient staff – The college or school has a sufficient number of staff to effectively address the following programmatic needs:		●	○
• Student and academic affairs-related services, including recruitment and admission	●	○	○
• Experiential education	●	○	○
• Assessment activities	●	○	○
• Research administration	●	○	○
• Laboratory maintenance		●	○
• Information technology infrastructure	●	○	○
• Pedagogical and educational technology support	●	○	○
• Teaching assistance	●	○	○
• General faculty and administration clerical support		●	○
• Support of distance students and campus(es) (if applicable)*	○	○	○

3) **College or School's Comments on the Standard:** The college or school's descriptive text and supporting evidence should specifically address the following. Use a check to indicate that the topic has been adequately addressed. Use the text box provided to describe: areas of the program that are noteworthy, innovative, or exceed the expectation of the standard; the college or school's self-assessment of its issues and its plans for addressing them, with relevant timelines; findings that highlight areas of concern along with actions or recommendations to address them; and additional actions or strategies to further advance the quality of the program. For plans that have already been initiated to address an issue, the college or school should provide evidence that the plan is working.

Wherever possible and applicable, survey data should be broken down by demographic and/or branch/campus/pathway groupings, and comments provided on any notable findings.

- A description of the process and interval for conducting faculty workload and needs assessments
- An analysis of teaching load of faculty members, including commitments outside the professional degree program
- The rationale for hiring any part-time faculty, and the anticipated duration of their contract
- Evidence of faculty and staff capacity planning and succession planning
- A discussion of the college or school's student-to-faculty ratio and how the ratio ties in with the college or school's mission and goals for the program
- How the college or school is applying the guidelines for this standard in order to comply with the intent and expectation of the standard
- Any other notable achievements, innovations or quality improvements
- Interpretation of the data from the applicable AACP standardized survey questions, especially notable differences from national or peer group norms.

Faculty and Staff

During academic year 2018-2019, the Departments of Pharmaceutical Sciences and Pharmacy Practice have a combined total of 39 faculty members. The Department of Pharmaceutical Sciences has 13 full-time faculty members. The Department of Pharmacy Practice has 26 full-time faculty members (contributing a total of 21.3 FTE towards instruction in the PharmD Program) and 2 part-time faculty members. As of 2018-2019 there was a total of 34.3 Instructional Faculty FTEs because not all faculty members have teaching responsibilities in the PharmD program. Currently, the Department of Pharmaceutical Sciences is in the process of filling two additional positions (Assistant Professors in medicinal chemistry, and pharmaceutical biochemistry), and the Department of Pharmacy Practice is recruiting an additional position (Assistant Professor of Practice in Acute Care).

Part-time faculty/academic staff are used for teaching our students specialized topics such as Principles of Toxicology. This allows students to learn about specialized topics from someone working and conducting research in that field. The College also uses part-time instructors when short on faculty and as interims for open positions when conducting searches for new faculty members. Using qualified part time faculty allows the College to use temporary appointments to teach until-full time positions are filled. Generally, the duration of the temporary contract is for one semester. Part-time faculty submit their CV's for review and must be approved by the Dean prior to teaching, in order to ensure faculty are qualified to teach the class. At present, the College has two part-time faculty members teaching in the professional program.

The Department of Pharmaceutical Sciences is the home of the Center for Diagnostic and Therapeutic Strategies in Pancreatic Cancer, which was established with support from the National Institute of General

Medical Sciences, under the Center of Biomedical Research Excellence (COBRE) program (up to \$9.6 million over five years). The Center provides start-up funds for new faculty hires.

AACP Survey Data

Members of the faculty were equally divided as to whether the college has sufficient numbers of staff to effectively address programmatic needs. Regarding Question #25 of the 2019 AACP Faculty Survey, 48.5% agree or strongly agree, and 48.5% disagree or strongly disagree, that the college has a sufficient number of staff. The percentage of faculty agreeing is lower than the national average (66.8%) and the average for peer institutions (67.9%).

With regard to number of faculty (Question #30; 2019 AACP Faculty Survey), a majority of faculty (54.6%) either disagreed or strongly disagreed that the college has sufficient numbers to effectively address programmatic needs. This is above the national average of 33.8%, as well as the average for peer institutions (26.8%).

Faculty Workload

Teaching responsibilities are assigned by the department chairs, in consultation with the faculty, based on course to be taught in the professional program and the Pharmaceutical Sciences graduate program. Most positions in the Department of Pharmaceutical Sciences are 9-month appointments with distributions of effort (DOE) = 50% research, 40% teaching, and 10% service. Pharmaceutical Sciences faculty members teach, on average, approximately 45 hours per year in the professional PharmD Program. Faculty members also participate in teaching graduate level courses, which may be offered annually or biannually as needed. Other teaching commitments include time spent advising graduate students and participating in departmental seminars in which graduate students present their work.

The Department of Pharmacy Practice (DPP) has a variety of faculty positions with different teaching DOE% ranging from 10% to 100%. Faculty appointments vary from 9- to 12-months with most faculty at 12 months. The Department of Pharmacy Practice adheres to a college workload guidance document for teaching (didactic, clinical and academic advising). In general, faculty in non-tenured positions with clinical sites have the same position descriptions (55% teaching; 10% research/scholarship and 35% service). A 55% DOE for teaching corresponds to 18 workload credits: 6 workload credits for didactic teaching; 10.5 workload for experiential teaching; and 1.5 workload for academic advising (this applies to 5 current faculty).

The average didactic teaching workload in the DPP is 8.7 ± 5.9 workload credits. Vacant positions noted above will have the same teaching distribution/effort as other non-tenured clinical faculty. Responsibilities of remaining DPP faculty vary greatly as their teaching DOE% varies depending on the specific type of position. For example there is a group of faculty that either have designated positions with no practice/clinical site and no administrative duties, Pharmacy Practice Lab-dedicated faculty that support all activity associated with these lab courses, or faculty with a practice/clinical site but are also on tenure-track. Since the last accreditation, the College has added a new Master of Public Health (MPH) program. The MPH program is under the auspices of the Department of Public Health. One faculty

member from Pharmacy Practice has a 50% DOE in the MPH program, but this does not interfere with teaching commitments in the PharmD program. That person is also the point person for the PharmD/MPH dual degree program.

In addition to teaching, faculty members typically participate in at least one committee at the department/college level and one at the university level. Faculty also advise and mentor professional and pre-professional students. At present, the college does not have designated faculty responsible for managing and delivering interprofessional education or co-curricular education, both of which are high priorities for ACPE accreditation. Therefore, these tasks are shared by faculty members, increasing their workload, and potentially compromising their ability to devote sufficient time and attention to it.

Faculty workload and needs assessments are reviewed annually during the faculty performance review. Changes in teaching loads, along with individual faculty development plans, are made as needed at that time. A proposed action plan is to ensure that all currently vacant faculty positions are filled in a timely manner, with monitoring of faculty workloads going forward.

The School of Pharmacy lost an Administrative Assistant line due to budget cuts. The workload was covered by another administrative assistant for the 2017-18 academic year, who was then moved over to Pharmacy Practice full-time, thus reducing staff support in Pharmaceutical Sciences. Whether this is a problem, or whether it was necessary trimming, is debatable; nonetheless, the full impact of this change in support has yet to be determined. One proposed action plan is to request that the executive leadership team strategically evaluate the optimal utilization of our staff, e.g. we may have enough numbers of staff, but are they covering the most important tasks, and the tasks that they are best suited for? It is also noted that the Department of Pharmaceutical Sciences does not have any technical support staff for maintenance of laboratory equipment.

Student-Faculty Ratio

The SOP accepts a maximum of 85 students per year into the professional pharmacy program, resulting in a total number of approximately 320-340 P1-P4 students at any one time (Early Admissions Program students are not included in this calculation until they reach the P1 year). The student-instructional faculty ratio has ranged from 9 - 10 to 1 during the past three years. This ratio is consistent with the goals set forth by ACPE but will continue to be monitored for any potential adverse changes. Filling the vacant faculty positions should result in an even lower student-instructional faculty ratio. It is anticipated that the new faculty members will join the College on or before August 1, 2020.

Succession Planning

Faculty members discuss different strategies to fill vacant faculty positions. These discussions are based on the need to maintain an adequate number of faculty to teach in the professional PharmD Program effectively. Search committees include faculty members from Pharmaceutical Sciences, Pharmacy Practice, students, staff, and external members when appropriate. Generally, a national search is conducted for all full time faculty positions. Prior to posting the position, the search committee chair is required to attend search training available through the office of the Provost. The search committee is

involved in recruiting, screening and interviewing applicants, with particular responsibility for affirmative action efforts to solicit and include applicants from underrepresented and protected groups (NDSU Policy 304 @ https://www.ndsu.edu/policy/section_3_non_banded_staff_employment_faculty_and_other/).

North Dakota State University is fully committed to equal opportunity in employment decisions and educational programs and activities, in compliance with all applicable federal and state laws and including appropriate affirmative action efforts (NDSU Policy 100 @ https://www.ndsu.edu/policy/section_1_general_employment/). Recommendations for the finalist(s) occur on the basis of the credentials of the applicant, consensus of the search committee, and faculty input. The two departments also strive to maintain a balance of assistant professors, associate professors and professors. Selection from the group of finalists is the responsibility of the unit administrator and is based on the recommendation of the search committee (NDSU Policy 103 @ https://www.ndsu.edu/policy/section_1_general_employment/).

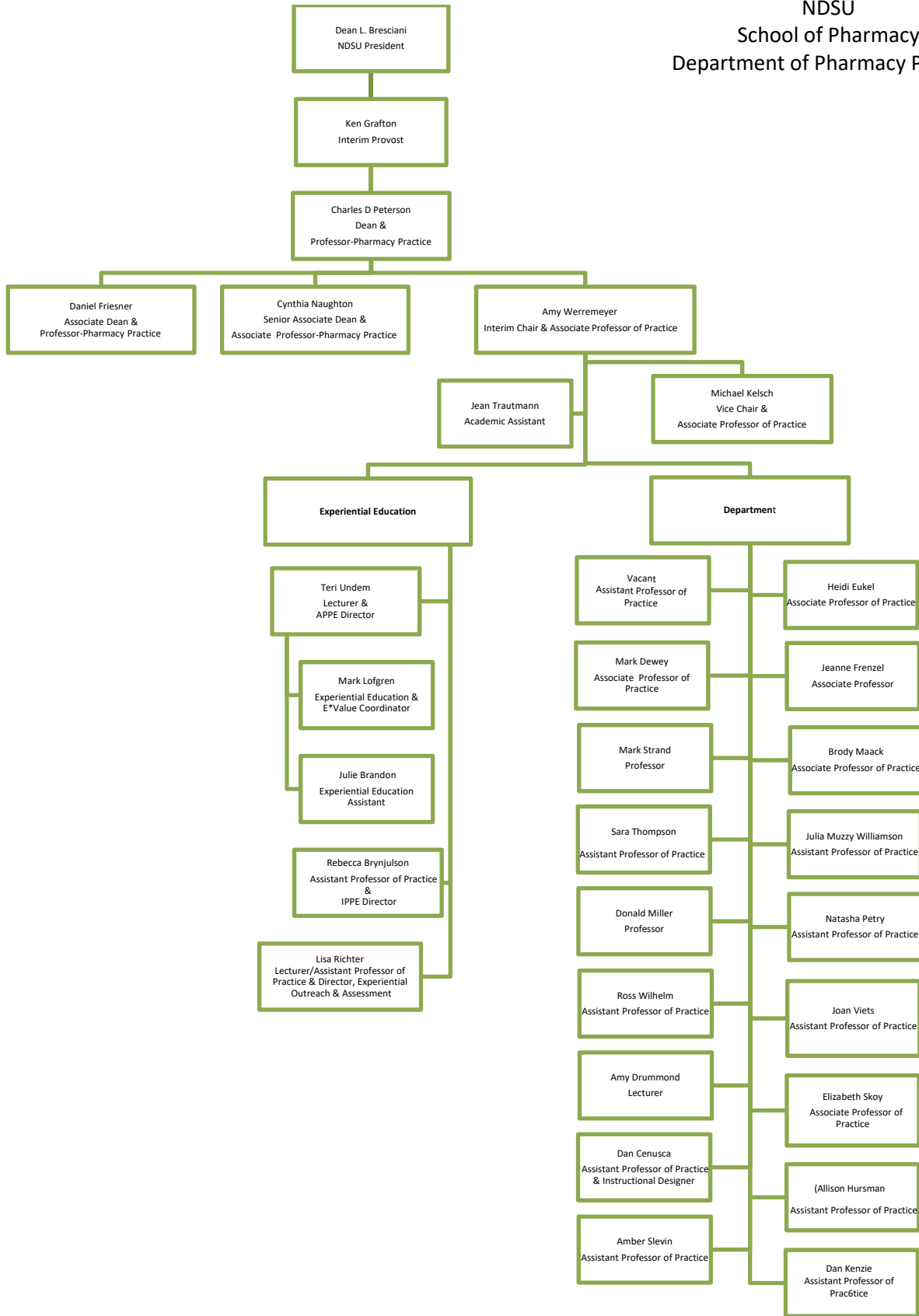
4) **College or School’s Final Self-Evaluation:** Self-assess how well the program is in compliance with the standard by putting a check in the appropriate box :

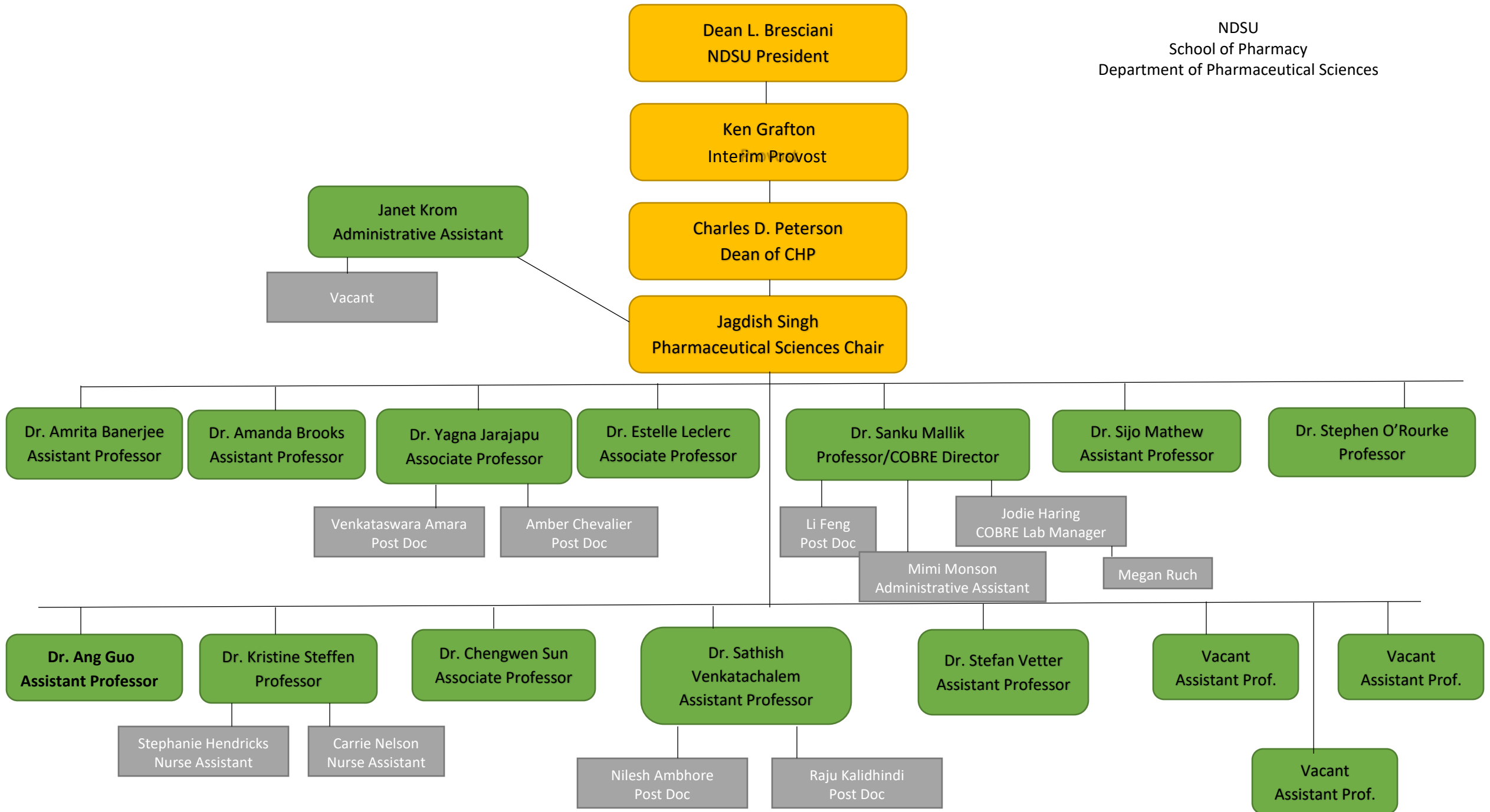
Compliant	Compliant with Monitoring	Partially Compliant	Non Compliant
No factors exist that compromise current compliance; no factors exist that, if not addressed, may compromise future compliance.	<ul style="list-style-type: none"> No factors exist that compromise current compliance; factors exist that, if not addressed, may compromise future compliance /or Factors exist that compromise current compliance; an appropriate plan exists to address the factors that compromise compliance; the plan has been fully implemented; sufficient evidence already exists that the plan is addressing the factors and will bring the program into full compliance. 	Factors exist that compromise current compliance; an appropriate plan exists to address the factors that compromise compliance and it has been initiated; the plan has not been fully implemented and/or there is not yet sufficient evidence that the plan is addressing the factors and will bring the program into compliance.	<ul style="list-style-type: none"> Factors exist that compromise current compliance; an appropriate plan to address the factors that compromise compliance does not exist or has not yet been initiated /or Adequate information was not provided to assess compliance
<input type="checkbox"/> Compliant	<input checked="" type="checkbox"/> Compliant with Monitoring	<input type="checkbox"/> Partially Compliant	<input type="checkbox"/> Non Compliant

- 5) **Recommended Monitoring:** If applicable, briefly describe issues or elements of the standard that may require further monitoring.

Co-curriculum and interprofessional education requirements puts increased pressure on faculty time commitments; thus, monitoring will be necessary to ensure there are sufficient numbers of faculty for the increased workload. Also, faculty members are now taking on a greater role in student advising and mentoring and are thus responsible for advising more students than in the past. How these factors impact faculty workloads will also require monitoring (e.g. track number of hours faculty are spending on advising and interprofessional education activities) during this transition period. Faculty will be surveyed annually by the department chairs and the findings discussed in department meetings. Any recommendations for action will be forwarded to the Dean.

NDSU
School of Pharmacy
Department of Pharmacy Practice





Other Department (specify):									
Opening figure (July 1)	0	0	0	0	0	0	0	0	0
Additional (new) positions APPROVED during the year	0	X	X	0	X	X	0	X	X
Positions lost (DISCONTINUED) during the year	0			0					
Number of persons hired (new positions and replacements)	0			0					
Number of persons who resigned during the year	0			0					
Number of persons who retired during the year	0			0					
Number of persons who were lost for other reasons during the year	0			0					
Closing figure (June 30)	0			0			0		

Section A - FTE Totals (continued)

	PAST ACADEMIC YEAR			CURRENT ACADEMIC YEAR			NEXT ACADEMIC YEAR		
	APPROVED positions (total FTE)	FILLED positions (total FTE)	VACANT positions (total FTE)	APPROVED positions (total FTE)	FILLED positions (total FTE)	VACANT positions (total FTE)	APPROVED positions (total FTE)	FILLED positions (total FTE)	VACANT positions (total FTE)
Administration:									
Opening figure (July 1)	3	3	0	3	3	0	3	3	0
Additional (new) positions APPROVED during the year	0	X	X	0	X	X	0	X	X
Positions lost (DISCONTINUED) during the year	0			0					
Number of persons hired (new positions and replacements)	0			0					
Number of persons who resigned during the year	0			0					
Number of persons who retired during the year	0			0					
Number of persons who were lost for other reasons during the year	0			0					
Closing figure (June 30)	3			3			0		
Summary (total of above boxes):									
Opening figure (July 1)	38.3	35.3	3	39.3	35.3	4	43.3	40.3	3
Additional (new) positions APPROVED during the year	1	X	X	4	X	X	0	X	X
Positions lost (DISCONTINUED) during the year	0			0					
Number of persons hired (new positions and replacements)	3			5					
Number of persons who resigned during the year	3			0					
Number of persons who retired during the year	0			0					
Number of persons who were lost for other reasons during the year	0			0					
Closing figure (June 30)	39.3			35.3			4		

Section B - Students Enrolled

NOTES	PAST ACADEMIC YEAR		CURRENT ACADEMIC YEAR		NEXT ACADEMIC YEAR	
Complete data for applicable years only. First Year refers to the first year of the degree program.	First Year	90	First Year	82	First Year	85
	Second Year	89	Second Year	87	Second Year	80
	Third Year	72	Third Year	90	Third Year	85
	Fourth Year	85	Fourth Year	70	Fourth Year	88
	Fifth Year		Fifth Year		Fifth Year	
	Sixth Year		Sixth Year		Sixth Year	
Total	336	Total	329	Total	338	

**North Dakota State University
College of Health Professions
School of Pharmacy
Faculty Changes**

Faculty Hires		
Name	Dept Name	Eff Hire Date
Amanda Brooks	Pharmaceutical Sciences	8/11/2014
Sathish Venkatachalem	Pharmaceutical Sciences	8/16/2016
Amrita Banerjee	Pharmaceutical Sciences	10/3/2017
Sijo Mathew	Pharmaceutical Sciences	8/16/2018
Leneika Roehrich	Pharmacy Practice	1/16/2015
Marketa Marvanova	Pharmacy Practice	7/1/2015
Lawrence Patnaude	Pharmacy Practice	7/1/2015
Heather Van Ningen	Pharmacy Practice	7/1/2015
Julia Muzzy Williamson	Pharmacy Practice	8/1/2015
Lisa Narveson	Pharmacy Practice	8/1/2015
Leneika Roehrich	Pharmacy Practice	8/10/2015
Justin Jones	Pharmacy Practice	8/16/2016
Amy Drummond	Pharmacy Practice	9/14/2016
Amber Slevin	Pharmacy Practice	12/28/2017
Lisa Richter	Pharmacy Practice	4/23/2018
Joan Viets	Pharmacy Practice	7/23/2018

Faculty Position Termination			
Name	Dept Name	Eff Termination Date	Reason
Erxi Wu	Pharmaceutical Sciences	8/7/2015	Resignation
Bin Guo	Pharmaceutical Sciences	8/16/2016	Resignation
Craig Schnell	Pharmaceutical Sciences	1/4/2017	Retirement
LaNell Hagen	Pharmacy Practice	8/2/2014	Resignation
Kenton Omgig	Pharmacy Practice	1/10/2015	Resignation
Wanda Roden	Pharmacy Practice	6/16/2015	Retirement
Robert Sylvester	Pharmacy Practice	7/1/2015	Retirement
Heather Van Ningen	Pharmacy Practice	7/1/2016	Resignation
Tara Schmitz	Pharmacy Practice	9/3/2016	Resignation
Wendy Brown	Pharmacy Practice	12/16/2016	Resignation
Leneika Roehrich	Pharmacy Practice	12/17/2016	Resignation
Lawrence Patnaude Jr	Pharmacy Practice	9/30/2017	Resignation
Justin Jones	Pharmacy Practice	5/12/2018	Resignation
Lisa Narveson	Pharmacy Practice	5/12/2018	Resignation

Instructional Faculty Credentials

Last Name	First Name	Department	Credentials	Courses Taught 2018-2019	Expertise
Banerjee	Amrita	PSCI	Ph.D: Biopharmaceutical Sciences, Master of Pharmacy: Pharmaceutics, Bachelor of Pharmacy	PSCI 369 Pharmaceutics II, PSCI 411/611 Principles of PK and PD	Lipid based drug delivery systems, Oral delivery of biologics, Nanoparticle based formulation development, Ionic liquid based formulations, Pharmaceutics and pharmacokinetics
Brooks	Amanda	PSCI	Ph.D., Molecular Biology, B.S., Biology, Genetic Engineering Emphasis	PSCI 367 Pharmaceutical Calculations (Course Coordinator), PSCI 410/610 Pharmaceutical Biotechnology	Antibiotic drug resistance, hemocompatible, antimicrobial biomaterial surface coating, advanced drug delivery.
Brynjulson	Rebecca	Pharmacy Practice	ASHP Accredited Pharmacy Practice Residency, PharmD, BS Biology, Board Certified Ambulatory Care Pharmacist (BCACP), Certified Geriatric Pharmacist (CGP)	Phrm 340: Pathophysiology I, Phrm 355: Introductory Pharmacy Practice Experience I (Course Coordinator), Phrm 455: Introductory Pharmacy Practice Experience II (Course Coordinator), Phrm 560: Specialty Care Topics, Phrm 580: Pharmacotherapy Capstone Course	Ambulatory Cardiovascular Pharmacotherapy, Geriatric Pharmacotherapy, Experiential Education, Problem Solving/Critical Thinking/Clinical Reasoning
Cernusca	Dan	Pharmacy Practice	Ph.D. Information Science and Learning Technologies, Ph.D. Mechanical Engineering, BS Manufacturing Engineering		Active learning strategies, Educational research, Instructional design, Purposeful integration of technology in classroom
Dewey	Mark	Pharmacy Practice	PharmD, Board Certified Geriatric Pharmacist (BCGP), Fellow of the American Society of Consultant Pharmacists (FASCP)	PHRM 341 Pathophysiology II, PHRM 520/620 Special Populations: Long-term Care, PHRM 534 Gastrointestinal, APPE Clinical Clerkship	Geriatrics, Medication Therapy Management, Psychiatry
Drummond	Amy	Pharmacy Practice	Pediatric Specialty (PGY2) Residency, Pharmacy Practice (PGY1) Residency, PharmD	Pharmacy Practice Lab I: PHRM 351L, Pharmacy Practice Lab II: PHRM 452L, Pharmacy Practice Lab III: PHRM 551L, Pharmacy Practice Lab IV: PHRM 552L	Clinical practice, Cystic fibrosis, Neonatology, Pediatrics
Eukel	Heidi	Pharmacy Practice	PharmD	Pharmacy Practice Lab I: PHRM 351L, Pharmacy Practice Lab II: PHRM 452L, Pharmacy Practice Lab III: PHRM 551L,	Community pharmacy practice, Medication therapy management, Patient communication, Patient consultation,
Frenzel	Jeanne	Pharmacy Practice	PhD, Adult and Occupational Education, ASHP Accredited Pharmacy Practice Residency, PharmD, Bachelor of Science, Microbiology w/minor in Biotechnology	Pharmacy Practice Lab I: PHRM 351L, Pharmacy Practice Lab II: PHRM 452L, Pharmacy Practice Lab III: PHRM 551L, Pharmacy Practice Lab IV: PHRM 552L	Adult education, Assessment techniques in pharmacy education, Curriculum and instructional development in pharmacy education, Institutional and outpatient pharmacy, Research in pharmacy education
Friesner	Daniel	CHP - Admin	PhD and BS in Economics	CHP 190 Critical Thinking and Academic Success (Course Coordinator)	Health Economics and Management Science, Applied Econometrics, Business Strategy, Outcomes Assessment in
Hursman	Allison	Pharmacy Practice	PharmD	CHP 400, Interprofessional Health Care Practice, PHRM 537, Renal Disease, Fluids, and Electrolytes, PHRM 538, Cardiovascular and Pulmonary Diseases, PHRM 545L, Pharmacotherapy Laboratory, PHRM 580, Pharmacotherapy	Geriatrics, Medication Therapy Management, Immunizations, Community Pharmacy Practice
Jarajapu	Yagna	PSCI	PhD-Pharmacology, MSc-Pharmacology, MPharm, BPharm.	PSCI 415/615 Neuropsychiatry Dynamics, PSCI 417/617 Pharmacogenomics (Course Coordinator)	Neuropharmacology, Vascular Pharmacology and Pharmacogenomics
Kelsch	Michael	Pharmacy Practice	Pharmacy Practice Residency, PharmD	PHRM 532/632 Infectious Disease (Course Coordinator), PHRM 560 Specialty Care Topics, PHRM 565 Pharmacy-Based Immunization Delivery (Course Coordinator), APPE Acute Care	Infectious Disease, Immunizations, Pharmacotherapy
Kenzie	Daniel	Pharmacy Practice	PhD, MA, BA in English	PHRM 570 Pharmacy Practice Improvement and Project Management	Professional & Technical Writing, Writing in the Disciplines, Rhetoric of Health & Medicine, Disability Studies
Leclerc	Estelle	PSCI	PhD	PSCI 412/612 Chemotherapeutic/ID Dynamics (Course Coordinator), PSCI 413/613 Endocrine/Respiratory/GI	Infectious Diseases, Immune disorders, Oncology, Pharmacology
Maack	Brody	Pharmacy Practice	Pharmacy Practice (PGY1) Residency, PharmD	PHRM 340 Pathophysiology, PHRM 538 Cardiovascular and Pulmonary Diseases (Course Coordinator), PHRM 570 Pharmacy Practice Improvement and Project Management	Ambulatory care clinical pharmacy practice, Patient-centered medical home, Pharmacy practice clinical service evaluation and implementation, Tobacco cessation

Instructional Faculty Credentials

Mallik	Sanku	PSCI	Post-Doc Bio-Organic Chemistry, PhD Organic Chemistry, BS Chemistry	PSCI 368: Pharmaceutics I (Course Coordinator)	Pharmaceutics
Marvanova	Marketa	Pharmacy Practice - Admin	PharmD, PhD, CGP, BCPP	PHRM 341 Pathophysiology II (Course coordinator), PHRM 536 Neurology & Psychiatry Pharmacotherapy, PHRM 580 Pharmacotherapy Capstone	Epilepsy and epilepsy syndromes, Geriatrics, Learning in high education, Multiple sclerosis, Neuro/psychopharmacology, Neurocognitive disorders, Parkinsonism, Pharmacy
Mathew	Sijo	PSCI	PhD	PSCI 412/612 Chemotherapeutic/ID Dynamics	Oncology, target therapy, nephrology
Miller	Donald	Pharmacy Practice	PharmD	CHP 450: CAM: An Evidence-Based Approach (Course Coordinator), PHRM 170: Common Medicines and Diseases (Course Coordinator), PHRM 480: Drug Literature Evaluation (Course Coordinator), PHRM 534: Pharmacotherapy: Rheumatology (Course Coordinator), PHRM 560 Specialty	Drug Literature Evaluation, Rheumatology, Statistics, Study Design
Muzzy William	Julia	Pharmacy Practice	PharmD, CNSC	PHRM 341 Pathophysiology II, PHRM 500 Top Drugs II (Course Coordinator), PHRM 520/620 Special Populations (Course Coordinator), PHRM 560 Specialty Care Topics (Course	Nutrition, Pediatrics, Women's Health
Naughton	Cynthia	CHP - Admin	PharmD, MS, BCPS	Co-curriculum Director Study Abroad	Faculty workload metrics, Interprofessional education(IPE), Pharmacy education curriculum and instructional development, Professionalism, Programmatic assessment
O'Rourke	Stephen	PSCI	PhD and MS Pharmacology, BS Pharmacy	PSCI 413 Endocrine/Resp/GI Dynamics, PSCI 414 Cardiovascular Dynamics (Course Coordinator)	Cardiovascular, Nervous system
Petry	Natasha	Pharmacy Practice	Pharmacy Practice (PGY1) Residency, PharmD, BS Microbiology, BCACP	PHRM 340 Pathophysiology (Course Coordinator), PHRM 534 Endocrine Therapeutics, PHRM 580 Pharmacotherapy Capstone (Co-Course Coordinator), APPE Clinical Clerkship:	Diabetes, Patient-Centered Medical Home Model, Pharmacogenomics, Ambulatory Care
Qian	Steven	PSCI	PhD in Free Radical/Radiation Biology	PSCI 411/611 Principles of PK and PD (Course Coordinator)	Oncology, pharmacokinetics, pharmacodynamics
Richter	Lisa	Pharmacy Practice	Pharmacy Practice (PGY1) Residency, PharmD	PHRM 560 Specialty Care Topics, PHRM 570 Pharmacy Practice Improvement and Project Management (Course	Residency Training, Adult Acute/Critical Care, Antimicrobial Stewardship, Professional Development
Scott	David	Pharmacy Practice	PhD Social and Administrative Pharmacy Program, MPH, BS Pharmacy	PHRM 350 Intro to Pharmacy Practice (Course coordinator), PHRM 352 Introduction to Health Care Systems (Course coordinator), CHP 400 Interprofessional Health Care Practice	Global health: Ireland, United Kingdom (developing), Health care delivery in the United States, Health outcomes research (rural vs. urban care, pharmacy education and practice)
Singh	Jagdish	PSCI - Admin	BS, MS, PhD Pharmaceutics	PSCI 369 Pharmaceutics II (Course coordinator)	Pharmaceutical Dosage Forms and Delivery Systems
Skoy	Elizabeth	Pharmacy Practice	PharmD	Pharmacy Practice Lab I: PHRM 351L, Pharmacy Practice Lab II: PHRM 452L, Pharmacy Practice Lab III: PHRM 551L, Pharmacy Practice Lab IV: PHRM 552L, PHRM 553: Pharmacy Point-of-Care Testing Certificate Program	Assessment in education, specifically educational innovation and active learning techniques through simulation, Community pharmacy practice: nonsterile compounding, point-of-care, immunizations, patient counseling, OTC
Slevin	Amber	Pharmacy Practice	PGY-2 Ambulatory Care Pharmacy Practice Residency, PGY-1 Pharmacy Practice Residency, PharmD	PHRM 534 Gastrointestinal Pharmacotherapy, PHRM 545L Pharmacotherapy Lab (Course coordinator), PHRM 570 Pharmacy Practice Improvement and Project Management, PHRM 580 Pharmacotherapy Capstone (Co-Course	Ambulatory Care Pharmacy Practice and Residency Training, Gastroenterology/Hepatology, Viral Hepatitis, Health Literacy, Medication Adherence
Steffen	Kristine	PSCI	PharmD, PhD in Pharmaceutical Sciences, NRSA F32 Postdoctoral Fellowship sponsored by NIDDK	PSCI 470/670 Pharmacokinetics (Course coordinator), PSCI 411/611 Principles of PK and PD	Pharmacokinetics, Obesity, Bariatric surgery

Instructional Faculty Credentials

Strand	Mark	Pharmacy Practice	PhD Health and Behavioral Science, MS Cell and Developmental Biology	PHRM 540: Public Health for Pharmacists (Course coordinator)	Primary prevention of opioid use disorders. Chronic disease epidemiology, specializing in diabetes, Global health, in particular China, Personal and professional development coaching, for example goal-setting, use of personal web page, LinkedIn, Research Gate, and Twitter, Population health impact measurement of health interventions. For example, using the RE-AIM tool to measure the impact of health interventions, public health and clinical medicine collaboration, Prevention and Management of chronic disease at the population level, in particular diabetes and the Diabetes Prevention Program, Public health in
Sun	Chengwen	PSCI	MD, PhD Immunology, Postdoc Central nervous system	PSCI 414 Cardiovascular Dynamics, PSCI 415/615 Neuropsychiatry Dynamics (Course Coordinator)	Hypertension, cardiovascular disease, central nervous system
Undem	Teri	Pharmacy Practice	RPh, BS Pharmacy	PHRM 400: Top Drugs I (Course Coordinator), APPE (Coordinator)	Communication, Community pharmacy, Ethics, Geriatrics, Management, Professionalism, Rural pharmacy
Venkatachala	Sathish	PSCI	PhD, MS, BS in Biochemistry	PSCI 412 Chemotherapeutic/ID Dynamics, PSCI 417 Pharmacogenomics	Genetic concepts, pharmacogenomics in oncology, genomics technology
Vetter	Stefan	PSCI	PhD Biochemistry, MS Chemistry	PSCI 410 Pharmaceutical Biotechnology (Course coordinator), PSCI 413/613 Endocrine/Respiratory/GI Pharamcodynamics	Biotechnology, Biopharmaceutics, Endocrine, Diabetes
Viets	Joan	Pharmacy Practice	Pharmacy Practice (PGY1) Residency, PharmD, BCPS	PHRM 537: Renal, Fluid and Electrolytes (Course Coordinator), PHRM 545L: Pharmacotherapy Laboratory, PHRM 580: Pharmacotherapy Capstone, PHRM 538: Cardiovascular and Pulmonary Diseases, CHP 400: Interprofessional Health Care	Antimicrobial Stewardship, Heart Failure, Atrial Fibrillation, Anticoagulation – especially warfarin, Acute Care/Adult Medicine
Werremeyer	Amy	Pharmacy Practice	Pharmacy Practice Residency, PharmD, BCPP	Pharmacy 536/636: Pharmacotherapy: Neurology/Psychiatry (Course Coordinator), PHRM 580 Pharmacotherapy Capstone, APPE Clinical Clerkship: Psychiatry	Patient education and medication experiences with psychotropic medications, Photovoice, Psychopharmacology—especially antidepressants
Wilhelm	Ross	Pharmacy Practice	PharmD	PHRM 450 Self Care (Course Coordinator), PHRM 475 Pharmacy Practice Management (Course coordinator), PHRM 572 Pharmacy Law (Course Coordinator), APPE Clinical	Community pharmacy practice, Independent community pharmacy practice management, Prescription drug insurance (Third party payer influences)

North Dakota State University
School of Pharmacy Voluntary Faculty
Report Date: September 2018

Site Name	Linked Educators	Linked Courses/Rotations	Rotation Type
Alaska Native Medical Center - Anchorage, AK - Acute Care	Sean Berkey, Kayli Ellingson, Mary Mackey	Acute Care	Acute Care
Alaska Native Medical Center - Anchorage, AK - Ambulatory Care	Erin Naber	Ambulatory Care	Ambulatory Care
Alaska Native Medical Center - Anchorage, AK - Institutional	Sean Berkey	Institutional	Institutional
Alaska Native Medical Center - Anchorage, AK - Oncology	Anne Marie Bott	Oncology	Elective
Alaska Native Medical Center - Anchorage, AK - Patient Care	Sean Berkey, Anne Marie Bott, Sara Doran-Atchison, Mary Mackey	Patient Care	Elective
Alaska Native Medical Center - Anchorage, AK - Quality Assurance/Quality Improvement	Sara Doran-Atchison, Ashley Schaber	Quality Assurance/Quality Improvement	Elective
Alaska Native Medical Center - Anchorage, AK - Transitions of Care	Sean Berkey, Michelle Locke, Mary Mackey	Transitional Care/Discharge Counseling	Elective
Albertsons - Bozeman, MT	Katie Baker	Community Advanced	Community
Albertsons - Colorado Springs, CO 8750 N. Union Blvd.	Melanie Gaspar	Community Advanced	Community
Albertsons - Livingston, MT	Deb Pascal	Community Advanced	Community
Albertsons - Mesa, AZ - 325 S Power Rd	Sam Murage	Community Advanced	Community
Albertsons - Missoula, MT - 3800 Russell St.	Zach Holmes	Community Advanced	Community
Allina Cambridge Medical Center - Cambridge, MN	Diane Solbrack	Institutional, Management, PHRM 352L Introductory Pharmacy Practice Experience	Institutional
Allina Cambridge Medical Center Outpatient Pharmacy - Cambridge, MN	Pharmacy Business Partner Jeremy Enger	Community Advanced, Management	Elective
Allina Community Pharmacy - Minneapolis, MN	Amanda Elliott	Community Advanced	Community
Allina Community Pharmacy (Management) - Minneapolis, MN	Ann Byre	Management	Elective
Allina Health Pharmacy- Woodbury, MN	Pharmacy Supervisor Paula Burns	Community Advanced	Community
Allina Mercy Hospital - Coon Rapids, MN	Ross Fishman	Institutional, PHRM 355 Introductory Pharmacy Practice Experience	Institutional
Allina New Ulm Medical Center - New Ulm, MN - 1324 5th St. N.	Jaclyn Rust	Institutional	Institutional Ambulatory Care
Allina Owatonna Hospital - Owatonna, MN	Jeffrey Bouman	Institutional, PHRM 352L Introductory Pharmacy Practice Experience	Institutional
Allina St. Francis Regional Medical Center - Shakopee, MN	Pharmacy Manager Janell Schultz, Rana Shouman	Acute Care, Emergency Room Encounter, PHRM 352L Introductory Pharmacy Practice Experience	Institutional Acute Care Elective
Alomere Health - Formerly Douglas Co. Hospital - Alexandria, MN	David Gray	Institutional	Institutional
Altru Health System - Clinic Pharmacy - Grand Forks, ND	Amanda Eastman, Kelly Hulst	Community Advanced, PHRM 455 Introductory Pharmacy Practice Experience	Community
Altru Health System - Grand Forks, ND - Acute Care	Clinical Pharmacist Brandie Hagert, Kevin Kern	Acute Care, Critical Care	Acute Care
Altru Health System - Grand Forks, ND - Anticoagulation	Melanie Cairns	Ambulatory Care, Anticoagulation	Ambulatory Care
Altru Health System - Grand Forks, ND - Institutional	Clinical Pharmacist Brandie Hagert, Kevin Kern, Jesse Lunde	Acute Care, Institutional, PHRM 355 Introductory Pharmacy Practice Experience	Institutional
American Pharmacists Association - Washington, DC	Associate Director Ryan Burke, Anne Burns, Lynette Hamilton, Brian Lawson, Jim Owen, Mitch Rothholz		Elective
Amery Regional Medical Center - Amery, WI	Mark Tryggestad	Acute Care, Institutional	Institutional Acute Care
Anoka Metro Regional Treatment Center - Anoka, MN	Andrew Zwack	Psychiatry	Elective
Appleton Area Health Services - Appleton, MN	Pharmacy Director Eric Mathiowetz	Rural	Acute Care
Austin Medical Center - Austin, MN - Acute Care	Laura Brown	Acute Care	Acute Care
Austin Medical Center - Austin, MN - Anticoagulation	Laura Brown	Ambulatory Care, Anticoagulation	Ambulatory Care
Austin Medical Center - Austin, MN - Institutional	Laura Brown	Institutional, PHRM 355 Introductory Pharmacy Practice Experience	Institutional

Avella of Tucson, Inc. - Tucson, AZ - 4512 E. Camp Lowell Dr.	Melinda Aragon	Compounding, Specialty Pharmacy	Elective
Avella Specialty Pharmacy - Phoenix, AZ	Kelly Mathews	Compounding, Specialty Pharmacy	Elective
Avera Flandreau Medical Center - Flandreau, SD	Gary Bruning, Cindy Deutscher	Institutional	Institutional
Avera Holy Family Hospital - Estherville, IA	Pharmacy Dept. Manager Kristi Hough	Institutional, Rural	Institutional Rural
Avera Marshall Regional Medical Center - Marshall, MN	Angie Hughes, Rachele Kunde, Pharmacy Director Andrew Wil	Ambulatory Care, Institutional, PHRM 355 Introductory Pharmacy	Institutional
Avera McKennan Hospital and University Health Center - Sioux Falls, SD	Clinical Pharmacist Bradley Beck, Director of Hospital Pharmac	Management, Oncology	Elective
Avera St. Lukes Hospital - Aberdeen, SD - Acute Care	Alvin Haugen	Acute Care	Acute Care
Avera St. Lukes Hospital - Aberdeen, SD - Institutional	Alvin Haugen, Kimberly Henrich, Danita Hoffman, Melanie Som	Institutional	Institutional
B & B Northwest Pharmacy - Minot, ND	Lance Mohl	Community Advanced, PHRM 451L Introductory Pharmacy Practic	Community
Banner Del E. Webb Med Ctr - Institutional - Sun City, AZ	Jessi Ferrell, Carmen Hutter, Diana Nguyen	Acute Care, Institutional	Acute Care Institutional
Banner Desert Med Ctr - Mesa, AZ	Clinical Pharmacist Trent Larson, Heidi Mahay, Brian Ziegler	Institutional	Acute Care
Banner Desert Medical Center - Mesa, AZ 1400 S Dobson Rd	Daniel Broderick	Institutional	Institutional
Baron's Pharmacy - Hibbing, MN	Craig Baron, Allison Cox, Amy Gleason	Community Advanced, PHRM 451L Introductory Pharmacy Practic	Community
Baxter Community Behavioral Health Hospital - Baxter, MN	Dr. John Koop	Psychiatry	Elective
Berthoud Drug - Berthoud, CO	Karl Foreman	Community Advanced	Community
Beulah Drug - Beulah, ND	David Just	PHRM 451L Introductory Pharmacy Practice Experience II, PHRM 4	Rural
Bien Pharmacy -Milbank, SD	Lance Bien	Rural	Rural
Billings Clinic - Billings, MT	Tara Bolte, Reina Coggins, Dr. Melanie Townsend	Acute Care, Ambulatory Care, Institutional	Ambulatory Care Acute Care
Biothera - Eagan, MN 3388 Mike Collins Dr.	Nandita Bose	Research	Elective
Bloomington Drug - Bloomington, MN	Jenny Mitchell, Jeff Schaffer, Paul Schaffer	Community Advanced, Compounding	Elective
Blue Cross Blue Shield - Fargo, ND	Adjunct Faculty Thomas Christensen, Pharmacy Manager Kryst	Pharmacoeconomics	Elective
Bottineau Clinic Pharmacy - Bottineau, ND	Katie Kram	Community Advanced, PHRM 451L Introductory Pharmacy Practic	Community Rural Ambulatory Care
Bowman Drug Co. - Bowman, ND	Gregory Wolf	PHRM 451L Introductory Pharmacy Practice Experience II, PHRM 4	Rural
Breckenridge Drug - Breckenridge, MN	Jodi Beyer	PHRM 451L Introductory Pharmacy Practice Experience II, PHRM 4	Rural
Breen's Thrifty White Pharmacy - Benson, MN	Pharmacy Manager Vyke Breen	Community Advanced, PHRM 455 Introductory Pharmacy Practic	Rural Community
Bureau of Prisons Federal Medical Center - Ambulatory Care - Rochester, MN	Jeremy Gustafson	Ambulatory Care	Ambulatory Care
Bureau of Prisons Federal Medical Center - Institutional Rochester, MN	Karl Aagenes, Beth Thompson	Ambulatory Care, Institutional	Institutional
Bureau of Prisons Federal Medical Center - Psychiatry - Rochester, MN	Josie Zepeda	Psychiatry	Elective
Campbell County Mem Hosp - Gillette, WY	Danica Graham, Robert Quintana	Institutional	Institutional
Cardinal Health - Moorhead, MN	Daniel Bohmer, Andrew Schaaf	Nuclear Pharmacy	Elective
Cardon Children's Medical Center - Mesa, AZ	Pediatric Clinical Pharmacist Hannah Dyk	Pediatrics	Elective
Carrington Drug - Carrington, ND	Owner/Manager Matt Paulson, Jesse Rue, Owner Shane Wend	PHRM 451L Introductory Pharmacy Practice Experience II, PHRM 4	Rural Ambulatory Care
CarrisHealth Rice Memorial Hospital CentraCare - Willmar, MN - Acute Care	Kristine Cervin, Clinical Pharmacist Nathan Goracke	Acute Care	Acute Care
CarrisHealth Rice Memorial Hospital CentraCare - Willmar, MN - Institutional	Kristine Cervin, Clinical Pharmacist Nathan Goracke	Institutional, PHRM 352L Introductory Pharmacy Practice Experie	Institutional
CarrisHealth Rice Memorial Hospital CentraCare - Willmar, MN - Oncology	Kristine Cervin, Clinical Pharmacist Nathan Goracke, Clinical PH	Acute Care, Oncology	Elective
Carrs Pharmacy - Anchorage, AK (Store #0520) - 3101 Fenland Pkwy	Jenny Delligatti	Community Advanced	Community
Carrs Pharmacy - Palmer, AK	Marcie Flagg	Community Advanced, Rural	Community

Cashwise Pharmacy - Hutchinson, MN	Laura Longie	Community Advanced, PHRM 451L Introductory Pharmacy Practice Experience I, PHRM 455 Introductory Pharmacy Practice Experience I	Community
Cashwise Pharmacy - Moorhead, MN	Corey Burnside	Community Advanced, PHRM 451L Introductory Pharmacy Practice Experience I, PHRM 455 Introductory Pharmacy Practice Experience I	Community
Cashwise Pharmacy - Waite Park, MN	John Lau	Community Advanced, PHRM 451L Introductory Pharmacy Practice Experience I, PHRM 455 Introductory Pharmacy Practice Experience I	Community
Cashwise Pharmacy - Willmar, MN	Julie Hansen, Will Smith	Ambulatory Care, Community Advanced, PHRM 451L Introductory Pharmacy Practice Experience I, PHRM 455 Introductory Pharmacy Practice Experience I	Community
Casselton Drug - Casselton, ND	Kathleen Nelson	PHRM 451L Introductory Pharmacy Practice Experience II, PHRM 455 Introductory Pharmacy Practice Experience I	Rural
Center for Family Medicine - Bismarck, ND	Billie Jo Krush	Ambulatory Care, Community Advanced	Ambulatory Care Community
Center for Family Medicine - Minot, ND	Pharmacy Manager Katherine Klein	Ambulatory Care, Community Advanced, Management, PHRM 451L Introductory Pharmacy Practice Experience I, PHRM 455 Introductory Pharmacy Practice Experience I	Ambulatory Care Community
Centracare Clinic Pharmacy - Becker, MN	Pharmacist-In-Charge Paul Fedor, Kurt Gramith	Community Advanced, PHRM 455 Introductory Pharmacy Practice Experience I	Community
CentraCare Health - Monticello, MN	Jackie Kern	Institutional	Institutional
CentraCare Health Long Prairie - Long Prairie, MN	Chris Hagen	Institutional, PHRM 355 Introductory Pharmacy Practice Experience I	Institutional
CentraCare Health Paynesville - Paynesville, MN	Jennifer Klocker, Todd Lemke	Ambulatory Care, Institutional, Rural	Institutional Acute Care Ambulatory Care
CentraCare Health System - Sauk Centre, MN	Dennis Heinen	Institutional, PHRM 352L Introductory Pharmacy Practice Experience I	Institutional Acute Care
CentraCare Pharmacy Health Plaza - St. Cloud, MN - 1900 Centracare Cir #1350	Keith Karsky	Community Advanced	Community
Centracare St. Cloud Hospital - St Cloud, MN - Institutional	Christopher Behm, Alex Hasek, Student Coordinator Sara Meemken, Angela Nelson	PHRM 352L Introductory Pharmacy Practice Experience I, PHRM 355 Introductory Pharmacy Practice Experience I	Institutional
Centracare St. Cloud Hospital - St. Cloud, MN - Acute Care	Student Coordinator Sara Meemken, Angela Nelson	Acute Care	Acute Care
Centracare St. Cloud Hospital - St. Cloud, MN - Ambulatory Care	Jennifer Hagen, Jessica Lind, Student Coordinator Sara Meemken, Angela Nelson	Ambulatory Care	Ambulatory Care
Centracare St. Cloud Hospital - St. Cloud, MN - Management	Student Coordinator Sara Meemken, Angela Nelson	Management	Elective
Centracare St. Cloud Hospital - St. Cloud, MN - Patient Care	Student Coordinator Sara Meemken, Angela Nelson	Patient Care	Elective
CentraCare St. Cloud Hospital - St. Cloud, MN - Transitions of Care	Michael Akers, Student Coordinator Sara Meemken, Angela Nelson	Patient Care	Elective
Central Avenue Health Mart Pharmacy - Valley City, ND	Pharmacy Owner/Manager Doreen Saylor	Community Advanced, PHRM 455 Introductory Pharmacy Practice Experience I	Rural
Central Pharmacy - Carrington, ND	Owner/Manager Matt Paulson, Owner Shane Wendel	PHRM 455 Introductory Pharmacy Practice Experience II, Rural	Rural Ambulatory Care
Chase Pharmacy - Garrison, ND	Kim Essler	PHRM 451L Introductory Pharmacy Practice Experience II, PHRM 455 Introductory Pharmacy Practice Experience I	Rural
CHI - Carrington Health Center - Carrington, ND	Drew Pentland	PHRM 355 Introductory Pharmacy Practice Experience I	Institutional
CHI - ePharmacist Direct - Fargo, ND - Institutional Telepharmacy	Karen Finck	Institutional	Institutional
CHI - Lisbon Area Health Services - Lisbon, ND	Pharmacy Manager Jill McRitchie	Institutional, PHRM 355 Introductory Pharmacy Practice Experience I	Institutional
CHI - Mercy Hospital - Valley City, ND	Amy Noeske	Institutional, PHRM 352L Introductory Pharmacy Practice Experience I	Institutional Acute Care Rural
CHI - Mercy Medical Center - Williston, ND	Mark Ceglowski, David Sandberg	Acute Care, Institutional, PHRM 352L Introductory Pharmacy Practice Experience I	Institutional Acute Care
CHI - Oakes Community Hospital - Oakes, ND	Asst Professor Tara Schmitz	Acute Care, Institutional, PHRM 352L Introductory Pharmacy Practice Experience I	Acute Care Institutional
CHI - St. Alexius Devils Lake Hospital - Devils Lake, ND	Kimberly Hurly	Institutional, PHRM 352L Introductory Pharmacy Practice Experience I	Institutional Acute Care
CHI - St. Alexius Health - Dickinson, ND - Institutional - Bren	Sadi Bren	Institutional	Institutional
CHI - St. Alexius Health - Dickinson, ND	Mindy Lucklum, Katie Palmer, Jerome Wahl	Institutional, PHRM 352L Introductory Pharmacy Practice Experience I	Rural Institutional Acute Care
CHI - St. Alexius Med Ctr - Bismarck, ND - Acute Care	Katie Deutsch, Clinical Pharmacist Adam Johnson	Acute Care	Acute Care
CHI - St. Alexius Med Ctr - Bismarck, ND - Community Pharmacy	Rick Detwiller, Krissi Peterson, LeNeika Roehrich	Community Advanced, PHRM 455 Introductory Pharmacy Practice Experience I	Community

CHI - St. Alexius Med Ctr - Bismarck, ND - Critical Care	Dan Mcpherson	Critical Care	Elective
CHI - St. Alexius Med Ctr - Bismarck, ND - Home Infusion - Ambulatory Care	Jill Gion, Natalie Koch	Ambulatory Care, Home Infusion	Ambulatory Care Elective
CHI - St. Alexius Med Ctr - Bismarck, ND - Infectious Disease	Carrie Sorenson	Infectious Disease	Elective
CHI - St. Alexius Med Ctr - Bismarck, ND - Informatics	Samuel Aadnes, Robin Nelson	Informatics	Elective
CHI - St. Alexius Med Ctr - Bismarck, ND - Institutional	Jill Gion, Jen Paluh, Chad Porsborg, Kristy Vadnais	Institutional, PHRM 355 Introductory Pharmacy Practice Experience	Institutional
CHI - St. Alexius Med Ctr - Bismarck, ND - Management	Keith Horner, Clinical Coordinator Dawn Mayer	Management	Elective
CHI - St. Alexius Med Ctr - Bismarck, ND - Oncology	Clinical Pharmacist Amber Olek, Clinical Pharmacist Kenton Olson	Oncology	Elective
CHI - St. Alexius Med Ctr - Bismarck, ND - Pediatrics	Debra Mcpherson	Pediatrics	Elective
CHI - St. Alexius Med Ctr - Bismarck, ND - Research	Joan Galbraith, Keith Horner, Dir Lab Services Elaine Kucera	Research	Elective
CHI - St. Alexius Med Ctr - Bismarck, ND - Surgery	Mike Roehrich	Surgery	Elective
CHI - St. Francis Medical Center - Breckenridge, MN	Brianne Allison, Lori Meyer	Institutional, PHRM 352L Introductory Pharmacy Practice Experience	Rural
CHI - St. Joseph's Area Health Services - Park Rapids, MN	Scott Kosel	Institutional, PHRM 352L Introductory Pharmacy Practice Experience	Institutional Acute Care
CHI - Unity Family Healthcare - St. Gabriels Hospital - Little Falls, MN	Howard Kenna, Debra Miller, Lam Thai, Christine Zapzalka	Institutional, Patient Care, PHRM 352L Introductory Pharmacy Practice Experience	Institutional
Children's Hosp/Clinics Homecare Pharmacy - Minneapolis, MN	Coleen Nelson	Homecare Pharmacy (Inactive), Pediatrics	Elective
Children's Hospitals & Clinics of Mn - Mpls, MN	David Hoff, Nancy Sommers, Lisa Stay	Pediatrics	Elective
Chippewa County Montevideo Hospital - Montevideo, MN	Jill Condon, Jamie Malstrom, Samantha Padula	Institutional, PHRM 352L Introductory Pharmacy Practice Experience	Institutional
Churchill Pharmacy - Bismarck, ND	Daniel Churchill	Community Advanced, PHRM 451L Introductory Pharmacy Practice Experience	Community
City Drug Store - International Falls, MN	Gary Anderson	Community Advanced, PHRM 451L Introductory Pharmacy Practice Experience	Community
Clinic Pharmacy, Inc. - Dickinson, ND - 2615 Fairway St.	Carla Duletski	Community Advanced, PHRM 455 Introductory Pharmacy Practice Experience	Community
Coborn's Pharmacy - Albertville, MN	Jason Klesk, Samantha Steve	Community Advanced, PHRM 451L Introductory Pharmacy Practice Experience	Community
Coborn's Pharmacy - Big Lake, MN	Brad Roesler	Community Advanced, PHRM 451L Introductory Pharmacy Practice Experience	Community
Coborn's Pharmacy - Clearwater, MN	Ann Schloesser	Community Advanced, PHRM 451L Introductory Pharmacy Practice Experience	Community
Coborn's Pharmacy - Delano, MN	Monica Kowalke, John Schindele	Community Advanced, PHRM 451L Introductory Pharmacy Practice Experience	Community
Coborn's Pharmacy - Elk River, MN	Samantha Steve	Community Advanced	Community
Coborn's Pharmacy - Foley, MN	Jason Brule	Community Advanced, PHRM 451L Introductory Pharmacy Practice Experience	Community
Coborn's Pharmacy - Glencoe, MN	Kelly Higgins	Community Advanced, PHRM 455 Introductory Pharmacy Practice Experience	Rural
Coborn's Pharmacy - Hastings, MN - 225 33rd St. W	Troy Anderson	Community Advanced, PHRM 455 Introductory Pharmacy Practice Experience	Community
Coborn's Pharmacy - Little Falls, MN	Gary Sperl	Community Advanced, PHRM 451L Introductory Pharmacy Practice Experience	Community
Coborn's Pharmacy - Long Prairie, MN	Kevin Dahl	PHRM 451L Introductory Pharmacy Practice Experience II, PHRM 455 Introductory Pharmacy Practice Experience	Rural
Coborn's Pharmacy - Melrose, MN	Gerald Wensmann	Rural	Community
Coborn's Pharmacy - Montevideo, MN	Carol Arends	Community Advanced, PHRM 455 Introductory Pharmacy Practice Experience	Community
Coborn's Pharmacy - Mora, MN	Kaitlyn Blanchard	PHRM 455 Introductory Pharmacy Practice Experience II, Rural	Rural
Coborn's Pharmacy - Park Rapids, MN	Bryan Ridgley	PHRM 451L Introductory Pharmacy Practice Experience II, PHRM 455 Introductory Pharmacy Practice Experience	Rural
Coborn's Pharmacy - Princeton, MN	Doug Rue	PHRM 451L Introductory Pharmacy Practice Experience II, PHRM 455 Introductory Pharmacy Practice Experience	Community
Coborn's Pharmacy - Ramsey, MN - 7900 Sunwood Dr.	Tekla Krebs, Jenn McDonnell, Trent Thompson	Community Advanced, PHRM 455 Introductory Pharmacy Practice Experience	Community
Coborn's Pharmacy - Sartell, MN	Anne Skoe	Community Advanced, PHRM 451L Introductory Pharmacy Practice Experience	Community
Coborn's Pharmacy - Sauk Centre, MN	Chris Determan, Kurt Schiffler	PHRM 451L Introductory Pharmacy Practice Experience II, PHRM 455 Introductory Pharmacy Practice Experience	Rural
Coborn's Pharmacy - Sauk Rapids, MN	Richard Senn	PHRM 451L Introductory Pharmacy Practice Experience II, PHRM 455 Introductory Pharmacy Practice Experience	Community
Coborn's Pharmacy - St. Cloud, MN - 1921 Coborn Blvd	Lynn Young	Management	Elective

Coborn's Pharmacy - St. Cloud, MN - Cooper Ave	Brian Engelman	Community Advanced, PHRM 451L Introductory Pharmacy Practic	Community
Coborn's Pharmacy - St. Joseph, MN	Steve Skoe	Community Advanced, PHRM 451L Introductory Pharmacy Practic	Rural
Colfax Health Mart Pharmacy - Colfax, WI	Pharmacy Manager Diana Odagard	Rural	Rural
Compounding Docs-Boca Raton, FL	Chuck Robertson	Compounding	Elective
Coram Healthcare Home Infusion - Phoenix, AZ	Amish Kapadia	Ambulatory Care	Ambulatory Care
Coram Healthcare Home Infusion Therapy - Moorhead, MN	Brian Moe	Ambulatory Care, Home Infusion	Ambulatory Care
Corner Drug Store - Wahpeton, ND	Paul Folden, Luke Glarum	PHRM 451L Introductory Pharmacy Practice Experience II, PHRM 4	Community
Coteau des Prairies Hospital - Sisseton, SD	Michaela Johnson	Institutional, PHRM 355 Introductory Pharmacy Practice Experien	Institutional
CoxHealth - Lester E. Cox Medical Centers, Springfield, MO - 3801 S. National	Justin Virtue	Institutional	Acute Care
CoxHealth - Springfield, MO	Joshua Holland	Institutional	Institutional
Crosslake Drug - Crosslake, MN	Pharmacy Owner Steven Kappes	Community Advanced, PHRM 451L Introductory Pharmacy Practic	Rural
Cub Pharmacy - Apple Valley, MN	Ed Findell	PHRM 451L Introductory Pharmacy Practice Experience II, PHRM 4	Community
Cub Pharmacy - Baxter, MN -14133 Edgewood Drive N	Ben Cooper	PHRM 451L Introductory Pharmacy Practice Experience II, PHRM 4	Community
Cub Pharmacy - Blaine, MN - 4205 Pheasant Ridge Drive	Mark Newman	Community Advanced, PHRM 455 Introductory Pharmacy Practic	Community
Cub Pharmacy - Blaine, MN - 585 Northtown Drive	Jessica Nguyen	PHRM 451L Introductory Pharmacy Practice Experience II, PHRM 4	Community
Cub Pharmacy - Blaine, MN 12595 Central Ave NE	Bryant Le	Community Advanced, PHRM 455 Introductory Pharmacy Practic	Community
Cub Pharmacy - Bloomington, MN - 8421 Lyndale Ave S.	Carly Dukart, Kayla Kortan	Community Advanced, PHRM 455 Introductory Pharmacy Practic	Community
Cub Pharmacy - Brainerd, MN - 417 8th Ave NE	Amber Hubbling, John Majerle	Community Advanced, PHRM 455 Introductory Pharmacy Practic	Community
Cub Pharmacy - Brooklyn Park 9655 Colorado Lane - Brooklyn Park, MN	Sara Melin	Community Advanced, PHRM 455 Introductory Pharmacy Practic	Community
Cub Pharmacy - Brooklyn Park, MN - 7555 West Broadway	Sandy Dong, Steve Mattila	Community Advanced, PHRM 451L Introductory Pharmacy Practic	Community
Cub Pharmacy - Burnsville, MN	Robert Hagie	Community Advanced, PHRM 451L Introductory Pharmacy Practic	Community
Cub Pharmacy - Eagan, MN - 1940 Cliff Lake Rd	Wade Tranby	PHRM 451L Introductory Pharmacy Practice Experience II, PHRM 4	Community
Cub Pharmacy - Mankato, MN - 1200 S Riverfront Dr	Pharmacy Manager Dale Rudolph	PHRM 451L Introductory Pharmacy Practice Experience II, PHRM 4	Community
Cub Pharmacy - Mankato, MN - 1800 Madison Ave	Tanya Sivertsen	Community Advanced, PHRM 455 Introductory Pharmacy Practic	Community
Cub Pharmacy - Maple Grove, MN - 8150 Wedgewood Ln N	Pharmacy Manager Darrick O'Brien	Community Advanced	Community
Cub Pharmacy - Maplewood, MN - 100 W County Rd B	Stuart Remus	PHRM 451L Introductory Pharmacy Practice Experience II, PHRM 4	Community
Cub Pharmacy - Maplewood, MN - 2390 White Bear Ave	Jessica Wong	Community Advanced, PHRM 455 Introductory Pharmacy Practic	Community
Cub Pharmacy - Plymouth, MN - 3550 Vicksburg Lane	Joseph Henning, Pharmacist Jill Landecker	Community Advanced, PHRM 455 Introductory Pharmacy Practic	Community
Cub Pharmacy - Plymouth, MN - 4445 Nathan Lane N	Sara Hamilton	Community Advanced, PHRM 455 Introductory Pharmacy Practic	Community
Cub Pharmacy - Rosemount, MN	Julie Szambelan	PHRM 451L Introductory Pharmacy Practice Experience II, PHRM 4	Community
Cub Pharmacy - St. Anthony, MN - 3930 Silver Lake Rd	Stephen Bealka	Community Advanced	Community
Cub Pharmacy - St. Louis Park, MN - 3620 Texas Ave S.	Jenn Riss	Ambulatory Care, Community Advanced, PHRM 451L Introductory	Community Ambulatory Care
Cub Pharmacy - St. Louis Park, MN - 5370 16th St.	Sean McLister	Community Advanced, PHRM 455 Introductory Pharmacy Practic	Community
Cub Pharmacy - Stillwater, MN - 421 3rd St S	Jason Reames	Community Advanced, Management	Community
Cub Pharmacy - White Bear Lake, MN	Kathryn Trumble	PHRM 451L Introductory Pharmacy Practice Experience II, PHRM 4	Community
Cub Pharmacy - Willmar, MN	Brenda Habedank	Community Advanced, PHRM 451L Introductory Pharmacy Practic	Community
Cuyuna Lakes Pharmacy - Crosby, MN	Jennifer Hirsche	PHRM 451L Introductory Pharmacy Practice Experience II, PHRM 4	Rural Ambulatory Care Elective
Cuyuna Regional Med Ctr - Crosby, MN	Michael Austin, Justin Richards	Ambulatory Care, Institutional, PHRM 352L Introductory Pharmac	Rural Institutional Ambulatory Care

CVS Caremark - Bloomington, MN	Jeffery Larson	Management	Elective
CVS Caremark - Fargo, ND - 13th Ave S. - Management	Bill Baker	Management	Elective
CVS inside Target - Rochester, MN - 4611 Maine Ave SE	Joe Brennan	Community Advanced, PHRM 455 Introductory Pharmacy Practice	Community
CVS inside Target Pharmacy - Chanhassen, MN - 851 W 78th St.	Jill Sherry	Community Advanced, PHRM 455 Introductory Pharmacy Practice	Community
CVS Inside Target Pharmacy - Coon Rapids, MN - 2033 Coon Rapids Blvd	Lisa Marsh	Management	Elective
CVS Inside Target Pharmacy - Queen Creek, AZ - 21398 S Ellsworth Loop Rd	Chris Braegger	Community Advanced	Community
CVS Pharmacy - Andover, MN	Stacy Gaugert, Ann Hanes	Community Advanced, PHRM 451L Introductory Pharmacy Practice	Community
CVS Pharmacy - Apple Valley, MN	Bhushan Gadam, Peggy Scholberg	Community Advanced, PHRM 451L Introductory Pharmacy Practice	Community
CVS Pharmacy - Beaumont, TX	Lien Nguyen	Community Advanced	Community
CVS Pharmacy - Blaine, MN	Dan Mach	Community Advanced, PHRM 451L Introductory Pharmacy Practice	Community
CVS Pharmacy - Boston, MA - 400 Tremont Street	Suzy Chan	Community Advanced	Community
CVS Pharmacy - Bozeman, MT - 115 N. 19th Ave	Patricia Cuskey	Community Advanced	Community
CVS Pharmacy - Brooklyn Center, MN - 5801 Brooklyn Blvd	Mukulika Biswas	Community Advanced, PHRM 455 Introductory Pharmacy Practice	Community
CVS Pharmacy - Brooklyn Park, MN - 7996 Brooklyn Blvd	Janine Lavigne	Community Advanced, PHRM 455 Introductory Pharmacy Practice	Community
CVS Pharmacy - Cape Coral, FL - 1209 Prado Blvd S	Katrina Alawil	Community Advanced	Community
CVS Pharmacy - Cape Coral, FL - 737 Cape Coral Pkwy E	Malgorzata Wiczorek	Community Advanced	Community
CVS Pharmacy - Chandler, AZ - 180 N Dobson Rd	Ryan Ludwig	Community Advanced	Community
CVS Pharmacy - Chanhassen, MN	Timothy Buttram, Betsy Huck	Community Advanced, PHRM 451L Introductory Pharmacy Practice	Community
CVS Pharmacy - Christiansburg, VA - 550 N Franklin St.	Kimberly Wildman	Community Advanced	Community
CVS Pharmacy - Cocoa Beach, FL - 4292 North Atlantic Ave.	Gabriel Basraj	Community Advanced	Community
CVS Pharmacy - Coon Rapids, MN	Darrell Gorham, Ashlee Slocum	PHRM 451L Introductory Pharmacy Practice Experience II, PHRM 455 Introductory Pharmacy Practice	Community
CVS Pharmacy - Cottage Grove, WI	Mark Lorson	Community Advanced	Community
CVS Pharmacy - Detroit Lakes, MN	JoAnn Dobis, Alyson Larson	Community Advanced, Rural	Community
CVS Pharmacy - Dilworth, MN - 1714 Center Ave W	Laci Ahrens	Community Advanced, PHRM 455 Introductory Pharmacy Practice	Community
CVS Pharmacy - Duluth, MN - 4528 Grand Ave	David Malenowski	Community Advanced, PHRM 455 Introductory Pharmacy Practice	Community
CVS Pharmacy - Fargo, ND - 13th Ave S.	Matthew Troyer	Community Advanced, PHRM 451L Introductory Pharmacy Practice	Community
CVS Pharmacy - Fargo, ND - 19th Ave N.	Pharmacy Mgr. Tami Lies	Community Advanced, PHRM 455 Introductory Pharmacy Practice	Community
CVS Pharmacy - Farmington, MN	Sandy Hoang, Susan Peroutky, Ann Wolken	Community Advanced, PHRM 451L Introductory Pharmacy Practice	Community
CVS Pharmacy - Flower Mound, TX	Rajeswari (Raj) Kolli	Community Advanced	Community
CVS Pharmacy - Fort Lauderdale, FL - 3501 West Davie Blvd	Alicia Ianuzelli	Community Advanced	Community
CVS Pharmacy - Grand Forks, ND	Clinical Pharmacist Samantha Buck	Community Advanced, PHRM 455 Introductory Pharmacy Practice	Community
CVS Pharmacy - Hallandale, FL - 2101 E. Hallandale Beach Blvd.	Chadwick Wynter	Community Advanced	Community
CVS Pharmacy - Honolulu, HI - 1030 S King St.	Helen Hong	Community Advanced	Community
CVS Pharmacy - Honolulu, HI - 1748 Liliha St.	Ian Mikami	Community Advanced	Community
CVS Pharmacy - Jensen Beach, FL - 1255 NE Jensen Beach Blvd	Robert Salvatore	Community Advanced	Community
CVS Pharmacy - Lakeville, MN - 17665 Kenwood Trail	Mark Dawald, Greg Whittemore	Community Advanced, PHRM 455 Introductory Pharmacy Practice	Community
CVS Pharmacy - Las Vegas, NV - 3270 S. Buffalo Drive	Shelley Nagahisa-Ohta	Community Advanced	Community
CVS Pharmacy - Lilburn, GA - 4860 Stone Mountain Hwy	Priti Doshi	Community Advanced	Community
CVS Pharmacy - Little Canada, MN - 2650 Rice St.	Kristin Lamprecht	Community Advanced, PHRM 455 Introductory Pharmacy Practice	Community
CVS Pharmacy - Madison, WI - 6701 Mineral Point Rd	Andreanne Pena-Beland	Community Advanced, PHRM 455 Introductory Pharmacy Practice	Community

CVS Pharmacy - Mansfield, TX	Nahed Zayed	Community Advanced	Community
CVS Pharmacy - Maple Grove, MN	Mary Duwenhoegger, Darla Noah	PHRM 451L Introductory Pharmacy Practice Experience II, PHRM 4	Community
CVS Pharmacy - Maplewood, MN - 2196 White Bear Ave N.	Adam Muehler	Community Advanced, PHRM 455 Introductory Pharmacy Practice	Community
CVS Pharmacy - Maricopa, AZ	Tim Oxley	Community Advanced	Community
CVS Pharmacy - Mesa, AZ - 1212 South Greenfield Road	Matt Holmes	Community Advanced	Community
CVS Pharmacy - Mesa, AZ - 2809 Sossaman Rd	Alex McDonald	Community Advanced	Community
CVS Pharmacy - Mesa, AZ - 360 N Val Vista	Intern Coordinator James Van Zanen	Community Advanced	Community
CVS Pharmacy - Milwaukee, WI - 2607 Downer Ave.	Paul Ford	Community Advanced	Community
CVS Pharmacy - Minneapolis, MN - 1010 Lake Street W	Danielle Cherrill	Community Advanced, PHRM 455 Introductory Pharmacy Practice	Community
CVS Pharmacy - Minneapolis, MN - 2001 Nicollet Ave	Scott Miller	PHRM 451L Introductory Pharmacy Practice Experience II, PHRM 4	Community
CVS Pharmacy - Minneapolis, MN - 330 15th Ave SE	Andrew Thoreson	Community Advanced, PHRM 455 Introductory Pharmacy Practice	Community
CVS Pharmacy - Minneapolis, MN - 3655 Central Ave	Pharmacy Manager Demi Olsen	Community Advanced	Community
CVS Pharmacy - Minneapolis, MN - 880 Washington Ave SE	Warren Batzlaff	Community Advanced	Community
CVS Pharmacy - Minneapolis, MN -2426 W. Broadway Ave	Kimleng Salyards, Anh Tran	Community Advanced	Community
CVS Pharmacy - Minot, ND	Mathew Klier	Community Advanced, PHRM 455 Introductory Pharmacy Practice	Community
CVS Pharmacy - Moorhead, MN	Kimberly Grabowska	Community Advanced, PHRM 451L Introductory Pharmacy Practic	Community
CVS Pharmacy - Morrow, GA	Pharmacy Manager George Jackson	Community Advanced	Community
CVS Pharmacy - Mounds View, MN	Soher Youssef	Community Advanced, PHRM 451L Introductory Pharmacy Practic	Community
CVS Pharmacy - Naples, FL - 8863 Tamiami Trail North	Alecia Currie	Community Advanced	Community
CVS Pharmacy - Needham, MA - Management	Lulu Fan	Management	Elective
CVS Pharmacy - New Hope, MN - 7901 Bass Lake Road	Emily Fellows	Community Advanced, PHRM 455 Introductory Pharmacy Practice	Community
CVS Pharmacy - New London, CT	Elizabeth St. Louis	Community Advanced	Community
CVS Pharmacy - Omaha, NE - 4840 Dodge St.	Patricia Swanson	Community Advanced	Community
CVS Pharmacy - Orange Park, FL - 1551 Cty Rd 220	Brenda Smith	Community Advanced	Community
CVS Pharmacy - Peoria, AZ	Melissa Burdick	Community Advanced	Community
CVS Pharmacy - Platte City, MO - 1301 Platte Falls Rd	Leandra Thompson	Rural	Rural
CVS Pharmacy - Plymouth, MN - 4140 County Road 101 N	Chad Siverson	Community Advanced, PHRM 455 Introductory Pharmacy Practice	Community
CVS Pharmacy - Queen Creek, AZ	Guadalupe Sandoval	Community Advanced	Community
CVS Pharmacy - Reno, NV - 2890 Northtown Lane	Sonia Hoang	Community Advanced	Community
CVS Pharmacy - Robbinsdale, MN	Kathy Broder	PHRM 451L Introductory Pharmacy Practice Experience II, PHRM 4	Community
CVS Pharmacy - Sanibel, FL - 2331 Palm Ridge Rd	Melissa Swartz	Rural	Rural
CVS Pharmacy - Scottsdale, AZ - 10010 N Scottsdale Rd	Kristin Wolter	Community Advanced	Community
CVS Pharmacy - Scottsdale, AZ - 10653 N. Scottsdale Rd.	Ina Kostova	Community Advanced	Community
CVS Pharmacy - Scottsdale, AZ - 32331 N. Scottsdale Rd	Pharmacy Manager Erika Fiedler	Community Advanced	Community
CVS Pharmacy - Scottsdale, AZ - Management - 15100 N. 90th St. Suite 110	Jennifer Vucson, Amber Wilkins	Management	Elective
CVS Pharmacy - St. Louis Park, MN - 4656 Excelsior Blvd.	Cathy Wain	Community Advanced, PHRM 455 Introductory Pharmacy Practice	Community
CVS Pharmacy - St. Michael, MN	Kim Emerson	Community Advanced, PHRM 455 Introductory Pharmacy Practice	Community
CVS Pharmacy - St. Paul, MN - 810 Maryland Ave	Eric Dorr	Community Advanced, PHRM 451L Introductory Pharmacy Practic	Community
CVS Pharmacy - Sugar Land, TX	Pharmacy Manager Mike Vaculik	Community Advanced	Community
CVS Pharmacy - Surprise, AZ - 19505 N Sunrise Blvd	Sandy Burger	Community Advanced	Community

CVS Pharmacy - Tucson, AZ - 2601 S. Houghton	May Safi	Community Advanced	Community
CVS Pharmacy - Tucson, AZ - 7901 E. Golf Links Road	Cheryl Nakamura	Community Advanced	Community
CVS Pharmacy - West Palm Beach, FL - 1301 N Dixie Hwy	Melvin Pickens	Community Advanced	Community
CVS Pharmacy - White Bear Lake, MN - 4800 Hwy. 61	Luke Atwood	Community Advanced	Community
CVS Pharmacy - Woodbury, MN - 2150 Eagle Creek Lane	Keri Hoss, Craig Oberg, Andrea Rambacher	Community Advanced, PHRM 451L Introductory Pharmacy Practice	Community
CVS Pharmacy - Woodbury, MN - 8468 Tamarak Road	Ada Stasny	Community Advanced, PHRM 455 Introductory Pharmacy Practice	Community
CVS Pharmacy Business Leadership - Hollywood, FL	Leamsi Regalado	Management	Elective
CVS Regional Office - Mendota Heights, MN - Management - Bodmer	Jen Bodmer	Management	Elective
CVS Regional Office - Mendota Heights, MN - Management - K. Engleka	Kara Engleka	Management	Elective
CVS Regional Office - Mendota Heights, MN - Management - Reich	Lindsey Reich	Management	Elective
Dakota Clinic Pharmacy - Fargo, ND - University Dr	Laura Morris, Carly Smithers	Community Advanced, PHRM 455 Introductory Pharmacy Practice	Community
Dakota Drug - Stanley, ND	Terry Dick	PHRM 455 Introductory Pharmacy Practice Experience II, Rural	Rural
Dartmouth-Hitchcock Medical Center - Lebanon, NH	Susan Littlepage, Evelina Maciuleviciute, Geoffrey Rickrode, Susan	Critical Care, Oncology	Elective
East Ottertail Pharmacy - Perham, MN	Pharmacist Dave Otterness, Duane Wallace	Community Advanced, PHRM 352L Introductory Pharmacy Practice	Rural
Eli Lilly and Company - Indianapolis, IN - Clinical Project Management	Katelyn Brown, Ericka Hylick	Management, Research	Elective
Eli Lilly and Company - Indianapolis, IN - Parenteral Manufacturing	Katelyn Brown, Ericka Hylick, Stephanie Levine	Research	Elective
Eli Lilly and Company - Indianapolis, IN	Katelyn Brown, Ericka Hylick, Stuart Keller	Health Care Policy, Research	Elective
Erickson Drug Inc. - Lakeville, MN	Robert Koziol	Community Advanced, PHRM 451L Introductory Pharmacy Practice	Community
Essentia - St. Mary's Medical Center Pharmacy - Duluth, MN	David Lommel	PHRM 355 Introductory Pharmacy Practice Experience I	Community
Essentia Deer River Healthcare Center - Deer River, MN	Sarah Litchke	Ambulatory Care, Institutional, PHRM 352L Introductory Pharmacy Practice	Institutional Ambulatory Care
Essentia Health - Fargo, ND - Acute Care	Bernie Behm, Julie Bubach, Mike Scheer, Joan Viets	Acute Care	Acute Care
Essentia Health - Fargo, ND - Anticoagulation	Amy Aeilts, Julie Bubach, Toni Evensen, Clinical Pharmacist Kim	Ambulatory Care, Anticoagulation, Patient Care	Ambulatory Care
Essentia Health - Fargo, ND - Infectious Disease	Julie Bubach	Infectious Disease	Elective
Essentia Health - Fargo, ND - Institutional	Amy Aeilts, Janet Bonn, Julie Bubach, Charlie Dillabough, Toni	Institutional, PHRM 355 Introductory Pharmacy Practice Experience	Institutional
Essentia Health - Fargo, ND - Transitions of Care	Julie Bubach, Danielle Stenhjem, Carly Wehner	Patient Care	Elective
Essentia Health - International Falls, MN	Tara Tomczak	Community Advanced, PHRM 455 Introductory Pharmacy Practice	Community
Essentia Health - St. Mary's - Detroit Lakes, MN	Clinical Pharmacist Nicholas Helbling, Kathryn Nordick	Acute Care, Institutional, PHRM 352L Introductory Pharmacy Practice	Institutional Acute Care
Essentia Health - St. Mary's Medical Center, Duluth, MN - Acute Care	David Sperl	Acute Care	Acute Care
Essentia Health - Virginia - Virginia, MN	Stephen Palazzari	PHRM 352L Introductory Pharmacy Practice Experience I, PHRM 3	Institutional
Essentia Health Pharmacy - Brainerd, MN	Pharmacist in Charge Randy Brenny	Ambulatory Care, Community Advanced	Community Ambulatory Care
Essentia Health St. Joseph's Medical Center - Brainerd, MN	Brianne Baloga, John Grygelko, Ryan Laposky	Acute Care, Institutional, PHRM 352L Introductory Pharmacy Practice	Institutional Acute Care
Fairview Apple Valley Clinic - Apple Valley, MN - Ambulatory Care	Clinical Pharmacist Paull Rukavina	Ambulatory Care	Ambulatory Care
Fairview Burnsville Clinic - Burnsville, MN - Ambulatory Care	Clinical Pharmacist Kelly Schweim	Ambulatory Care	Ambulatory Care
Fairview Eagan Clinic - Eagan, MN Ambulatory Care	Clinical Pharmacist Nicole Paterson	Ambulatory Care	Ambulatory Care
Fairview Edina Clinic - Edina, MN- Ambulatory Care	Clinical Pharmacist Heidi Schultz	Ambulatory Care	Ambulatory Care
Fairview Highland Park Clinic - St. Paul, MN - Ambulatory Care	Clinical Pharmacist Paull Rukavina	Ambulatory Care	Ambulatory Care
Fairview Mail Order Pharmacy Services-Mpls, MN	Eric Bergquist, Danelle Carlson	Ambulatory Care, Compounding, Home Infusion, Mail Order Pharmacy	Elective
Fairview Maple Grove Medical Center - Maple Grove, MN - Ambulatory Care	Clinical Pharmacist Jennifer Riegel	Ambulatory Care	Ambulatory Care

Fairview New Brighton Clinic- New Brighton, MN - Ambulatory Care	Heather Maracle-Fahey	Ambulatory Care	Ambulatory Care
Fairview Northland Health Service - Princeton, MN	Tegan Buckley, Lance Swearingen	Acute Care, Institutional, PHRM 355 Introductory Pharmacy Pract	Institutional
Fairview Pharmacy Services - Minneapolis, MN	Landen Sanderson	Compounding	Elective
Fairview Prior Lake Pharmacy - Prior Lake, MN	Amy Hagbom	Community Advanced, PHRM 455 Introductory Pharmacy Practice	Community
Fairview Red Wing Med Ctr - Redwing, MN	David Swinarski	Institutional, PHRM 352L Introductory Pharmacy Practice Experie	Institutional
Fairview Rosemount Clinic - Rosemount, MN - Ambulatory Care	Clinical Pharmacist Nicole Paterson	Ambulatory Care	Ambulatory Care
Fairview Univ Med Ctr - Hibbing, MN	Sara Madden	Acute Care, Institutional, PHRM 352L Introductory Pharmacy Prac	Institutional Acute Care
Fairview Uptown Clinic - Minneapolis, MN	Allyson Schlichte	Ambulatory Care	Ambulatory Care
Fairview Wyoming Clinic - Wyoming, MN - Ambulatory Care	Carolyn Kilgore	Ambulatory Care	Ambulatory Care
Family Fare Pharmacy - Cannon Falls, MN - 425 Main St. W	Dan Freeman	Rural	Community
Family HealthCare - Fargo, ND - Ambulatory Care - Maack	Asst Professor Brody Maack	Ambulatory Care	Ambulatory Care
Family HealthCare - Fargo, ND - Ambulatory Care - Slevin	Amber Slevin	Ambulatory Care	Ambulatory Care
Family Healthcare - Fargo, ND Ambulatory Care - Iverson	Miguel Buisancatevilla, Clinical Pharmacist Jennifer Iverson	Ambulatory Care, Community Advanced, PHRM 455 Introductory	Ambulatory Care
Family HealthCare Pharmacy - Fargo, ND - Community - Wald/Miguel	Miguel Buisancatevilla, Clinical Pharmacist Jennifer Iverson, Ni	Ambulatory Care, PHRM 451L Introductory Pharmacy Practice Exp	Community
Family Medicine Residency Pharmacy - Grand Forks, ND	JoEllen McGauvran	Ambulatory Care, Community Advanced, PHRM 451L Introductory	Community Ambulatory Care
FDA - Center for Drug Evaluation and Research	James Hunter, Controlled Substance Staff Samina Khan	Research	Elective
FDA - Division of Medication Error Prevention and Analysis	Jo Wyeth	Special Projects	Elective
FDA - Office of Minority Health - Silver Spring, MD - Merenda	Christine Merenda	Public Health	Elective
FDA - Silver Spring, MD - Centeno-Deshields	Diane Centeno-Deshields	Special Projects	Elective
FirstLight Health System - Mora, MN	Director of Pharmacy Brent Thompson	Acute Care, Ambulatory Care, Institutional, PHRM 355 Introducto	Institutional
Flower Mound Herbal Pharmacy - Flower Mound, TX	Dennis Song	Community Advanced	Community
Food City Pharmacy - Gatlinburg, TN	Pharmacy Manager Ryan Froelich	Community Advanced	Community
Forman Drug - Forman, ND	Nathan Schlecht	PHRM 451L Introductory Pharmacy Practice Experience II, PHRM 4	Rural
Fred Meyer - Anchorage, AK - 7701 DeBarr Rd	Allie Mokhantha, Pharmacy Manager Kimberly West	Community Advanced	Community
Fred Meyer - Cornelius, OR	Rosalyn Huntington	Community Advanced	Community
Fred Meyer - University Place, WA - 6305 Bridgeport Way W.	Andrea Hague, Kim Vu	Community Advanced	Community
Fred Meyer Pharmacy - Soldotna, AK	Mark Bohrer, Pharmacist Rose Henry, Store Mgr Doug Morris	Rural	Rural
Gateway Health Mart Pharmacy Sunrise - Bismarck, ND - 3103 Yorktown Dr.	Shelby Dodd, Briana Fluhrer	Community Advanced, PHRM 455 Introductory Pharmacy Practice	Community
Gateway Pharmacy North - Bismark, ND	Patrick Brunelle	PHRM 451L Introductory Pharmacy Practice Experience II, PHRM 4	Community
Genoa Healthcare - Coon Rapids, MN - 1930 Coon Rapids Blvd NW	Anna Averbeck	Psychiatry	Elective
Genoa Healthcare - New Brighton, MN - 1900 Silver Lake Rd	Site Manager Brittany Ulrich, William Wrigley	Psychiatry	Elective
Genoa Healthcare - Owatonna, MN - 610 Florence Ave	Walker Darkow	Psychiatry	Elective
Genoa Healthcare - Roseville, MN - 3101 Old Hwy 8	Julie Jackman, Rita Schille	Psychiatry	Elective
Genoa Healthcare - St. Louis Park, MN - 1155 Ford Road	Sarah Goring	Psychiatry	Elective
Genoa Healthcare - St. Paul, MN - 144 Wabasha St. S	Jonathon Montag	Psychiatry	Elective
Genoa Healthcare - St. Paul, MN - 317 York Ave	Christina Affeldt, Michelle May	Psychiatry	Elective
Globe Drug & Medical Equipment - Grand Rapids, MN	Mike Brandt	Community Advanced, Management, PHRM 451L Introductory Ph	Community
Good Day Pharmacy - Wellington, CO	Liz Buxton	Community Advanced, Rural	Community
Grafton Drug - Grafton, ND	Kari Pastorek, Beth Wharam	PHRM 451L Introductory Pharmacy Practice Experience II, PHRM 4	Ambulatory Care

Grand Itasca Clinic & Hospital - Grand Rapids, MN	Melissa Walters	Acute Care, Institutional, PHRM 352L Introductory Pharmacy Prac	Acute Care Institutional
Grand Itasca Pharmacy - Grand Rapids, MN	Pharmacy Manager David Johnson	Community Advanced	Community Ambulatory Care
Granite Falls Hospital Pharmacy - Granite Falls, MN	Peter Metcalf	Rural	Rural
GuidePoint Pharmacy - Brainerd, MN	Laura Schwartzwald	PHRM 451L Introductory Pharmacy Practice Experience II, PHRM 4	Ambulatory Care Community
GuidePoint Pharmacy #106 - Crosby, MN	Matt Larson, Mike Schwartzwald	Rural	Rural
GuidePoint Pharmacy #108 - Nisswa, MN	Dr. Rebecca Piekarski, Katherine Rangen	Ambulatory Care, Rural	Rural
Hankinson Drug - Hankinson, ND	Julie Falk	PHRM 451L Introductory Pharmacy Practice Experience II, PHRM 4	Rural
Haugan's Pharmacy - Preston, MN	Jon Haugan	PHRM 451L Introductory Pharmacy Practice Experience II, PHRM 4	Rural
Hawaii Home Infusion - Lihue, HI	Kevin Glick	Ambulatory Care, Home Infusion	Ambulatory Care
Hazen Drug - Hazen, ND	Michael Chase	PHRM 451L Introductory Pharmacy Practice Experience II, PHRM 4	Rural
Health Center Pharmacy - West Fargo, ND	Brandon Rolland	PHRM 451L Introductory Pharmacy Practice Experience II, PHRM 4	Community
HealthEast Bethesda Hospital - St. Paul, MN - 559 Capital Blvd	Ashlee Anderson	Acute Care, Institutional, PHRM 352L Introductory Pharmacy Prac	Institutional
HealthEast Rice Street Clinic - St. Paul, MN - 980 Rice St.	Margaret Wallace	Ambulatory Care	Ambulatory Care
HealthEast Woodbury Clinic - Woodbury, MN	Katie Kline, Zachariah Merk	Ambulatory Care	Ambulatory Care
HealthPartners - St. Paul, MN 401 Phelan Blvd	Trang Vo	Ambulatory Care	Ambulatory Care
HealthPartners - Woodbury, MN 8450 Seasons Pkwy	Amber Peltier	Ambulatory Care	Acute Care
Heart of America Clinic Pharmacy - Rugby, ND	Erik Christenson, Tallie Schneider	PHRM 455 Introductory Pharmacy Practice Experience II, Rural	Rural
Heart of America Med Ctr - Rugby, ND	Erik Christenson, Jennifer Melgaard	Institutional, PHRM 352L Introductory Pharmacy Practice Experie	Institutional Acute Care
Hennepin County Medical Center - 701 Park Ave - Minneapolis, MN	Tracy Anderson-Haag, Clinical Pharmacist Mary Kuzel	Ambulatory Care	Ambulatory Care
Heritage Pharmacy - Bismarck, ND - Gateway Mall	Luke Hoehst	Community Advanced, PHRM 455 Introductory Pharmacy Practice	Community
Heritage Pharmacy - Bismarck, ND - Mid Dakota Clinic	Pharmacy Manager Andrew Kristensen	Community Advanced, PHRM 451L Introductory Pharmacy Practic	Community
Hillsboro Drug - Hillsboro, ND	Randy Habeck	PHRM 451L Introductory Pharmacy Practice Experience II, PHRM 4	Rural
Home Care Pharmacy Inc. - Palm Coast, FL	Joe Corgan	Compounding	Elective
Hudson Hospital - Hudson, WI	Darla Klementz, Stephanie Rippie	Acute Care, Institutional, PHRM 352L Introductory Pharmacy Prac	Community Institutional
Hugo's Family Pharmacy - Thief River Falls, MN	Danielle Baird	Community Advanced, PHRM 455 Introductory Pharmacy Practice	Community
Hutchinson Health - Hutchinson, MN	Dan Berkner	Acute Care, Ambulatory Care, Institutional, PHRM 352L Introduct	Institutional Acute Care
Hy-Vee Pharmacy - New Hope, MN - 8200 42nd Ave N	Cara Evans	Community Advanced, PHRM 455 Introductory Pharmacy Practice	Community
InfuScience - Eagan, MN - 2915 Waters Rd #110	David Monson, Alena Rakita	Ambulatory Care, Home Infusion	Elective
Iowa Pharmacy Association - Des Moines, IA - 8515 Douglas Ave	Anthony Pudlo	Management	Elective
Irsfeld Pharmacy - Dickinson, ND	Steven Irsfeld	Ambulatory Care, Compounding, PHRM 451L Introductory Pharm	Community Elective Ambulatory Care
Jamestown Regional Medical Center - Jamestown, ND	Brian Ament	Institutional, PHRM 352L Introductory Pharmacy Practice Experie	Institutional
Johns Hopkins All Children's Hospital - St. Petersburg, FL	Jena Koshaihs-Valdes, Katie Litherland, Amanda Memken, Russ	Institutional, Oncology, Pediatrics	Institutional
Jon's Drug - Eveleth, MN	Jon Marcaccini	PHRM 451L Introductory Pharmacy Practice Experience II, PHRM 4	Rural
Juro's Home Medical-Pharmacy - Billings, MT	Dan Jurovich, Mark Jurovich	Compounding	Elective
Kemper Drug - Elk River, MN	Wendy Simenson	Community Advanced	Community
KeyCare Medical Pharmacy - Minot, ND	Lance Mohl	Community Advanced, PHRM 455 Introductory Pharmacy Practice	Community

Killdeer Pharmacy - Killdeer, ND	Jody Doe	PHRM 451L Introductory Pharmacy Practice Experience II, PHRM 4	Rural
King's Pharmacy - Beaumont, TX	Kari Pfaff	Compounding, Management	Elective
K-Mart Pharmacy - Cape Girardeau, MO - 11 South Kingshighway	Loretta Lents	Community Advanced	Community
K-Mart Pharmacy - International Falls, MN	Lisa Blanchard	Community Advanced, PHRM 451L Introductory Pharmacy Practic	Community
K-Mart Pharmacy - Management - Sioux Falls, SD - 2108 W 19th St.	Larry Ritter	Management	Elective
Kroger Company Pharmacy - Beaumont, TX	Amy Boyd	Community Advanced	Community
Lake Elmo Compounding Pharmacy - Lake Elmo, MN	Nick Rich	Compounding	Elective
Lake Region Healthcare Corporation - Fergus Falls, MN - Acute Care	Asst Professor Mark Dewey, Todd Johnson	Acute Care, Ambulatory Care, Geriatrics, Institutional, PHRM 355	Acute Care Elective
Lake Region Healthcare Corporation - Fergus Falls, MN - Geriatrics-Consulting	Asst Professor Mark Dewey	Acute Care, Geriatrics	Elective
Lake Region Healthcare Corporation - Fergus Falls, MN - Institutional	Brett Leitch, Amanda Thormodson	Institutional, PHRM 352L Introductory Pharmacy Practice Experie	Institutional
Lake Region Healthcare Corporation - Fergus Falls, MN - Psychiatry	Todd Johnson	Psychiatry	Acute Care
Lakes Regional Healthcare - Spirit Lake, IA	Kim Ihnen	Institutional, Oncology	Elective
Lakeview Hospital - Stillwater, MN	Cindy Appleseth, Todd Hilgendorf	Acute Care, Institutional, PHRM 352L Introductory Pharmacy Prac	Institutional Acute Care
Lakewood Health System - Staples, MN	Clinical Pharmacist Andrea Agre, Director of Pharmacy Brian H	Ambulatory Care, Hospice, Institutional, PHRM 352L Introductory	Elective
Langdon Community Drug - Langdon, ND	Lyle Lutman	PHRM 451L Introductory Pharmacy Practice Experience II, PHRM 4	Rural
Larsen Service Drug Inc - Watford City, ND	Student Coordinator Kelsey Linseth	PHRM 451L Introductory Pharmacy Practice Experience II, PHRM 4	Rural
Lewis Drug - Browns Valley, MN	Ellen Nigg-Johnson	PHRM 451L Introductory Pharmacy Practice Experience II, PHRM 4	Rural
Lewis Drug - Rock Valley, IA	Aaron Van Den Berg	Rural	Rural
Lewis Drug - Spirit Lake, IA	Todd Gerking	Community Advanced	Community
Liebe Drug - Appleton, MN	Jessica Fredricksen	PHRM 455 Introductory Pharmacy Practice Experience II, Rural	Rural
Liebe Drug - Graceville, MN	Valerie Tritz	Community Advanced, Rural	Rural
Liebe Drug - Milbank, SD	Rondi Scoular	PHRM 451L Introductory Pharmacy Practice Experience II, PHRM 4	Rural
Liebe Drug - Ortonville, MN	Eric Brandriet	PHRM 451L Introductory Pharmacy Practice Experience II, PHRM 4	Rural
LifeCare Medical Center - Roseau, MN	Gordy Streiff	Institutional, PHRM 352L Introductory Pharmacy Practice Experie	Institutional
Lihue Professional Pharmacy - Lihue, HI	Kevin Glick	Ambulatory Care, Rural	Rural
Lindstrom Thrifty White Pharmacy - Lindstrom, MN	Mike Lukkason	Rural	Rural
Linson Pharmacy (Community) - Fargo, ND	Steve Boehning, Marissa Huebsch, Clinical Pharmacist Allison H	Community Advanced, PHRM 451L Introductory Pharmacy Practic	Community
Linson Pharmacy (Management) - Fargo, ND	Steve Boehning	Management	Elective
Longbella Drug - Clinic Pharmacy - Staples, MN	Director of Pharmacy Lani (Lonnie) Roberts	Rural	Rural
Lovell Drug Co. - Lovell, WY - 164 Main St.	Brent Reasch	Rural	Rural
Lynns Dakotamart - Belle Fourche, SD	Kimberly Ammerman	Rural	Rural
Market Pharmacy - Minot, ND	Mikayla Solberg	Community Advanced, PHRM 455 Introductory Pharmacy Practic	Community
Mattson Pharmacy - Roseau, MN	Dean Mattson	PHRM 451L Introductory Pharmacy Practice Experience II, PHRM 4	Rural
Maui Clinic Pharmacy - Kahului, HI	Les Krenk	Ambulatory Care, Community Advanced	Ambulatory Care
Mayo Clinic Health System - Mankato, MN	Jeffrey Biermann	Acute Care, Institutional, PHRM 352L Introductory Pharmacy Prac	Institutional Acute Care
Mayo Pharmacy - Bismarck, ND	Kevin Martian	Community Advanced, Long Term Care	Community
MD Pharmacy (Inside Hornbacher's 13th Ave S) - Fargo, ND	Pharmacy Manager Michael Glessing	Community Advanced	Community
Medical Pharmacy Inc - Fargo, ND	Jennifer Johnson	Community Advanced, PHRM 451L Introductory Pharmacy Practic	Community
Medical Pharmacy Moorhead - Moorhead, MN	Susan Dill, Sheila Nudell	Community Advanced, PHRM 451L Introductory Pharmacy Practic	Community

Medical Pharmacy South - Fargo, ND	Lana Kirschenmann	Community Advanced, PHRM 451L Introductory Pharmacy Practice Experience II, PHRM 451L Introductory Pharmacy Practice Experience I	Community
Medsave Family Pharmacy - Bemidji, MN	Richard Chernugal, John Naegeli	Ambulatory Care, Community Advanced, PHRM 451L Introductory Pharmacy Practice Experience II, PHRM 451L Introductory Pharmacy Practice Experience I	Community
Meeker County Memorial Hospital - Litchfield, MN	Nick Buschette, Kelly Larson, Interim Pharmacy Director Rick Larson	Institutional, Management, PHRM 355 Introductory Pharmacy Practice Experience II, PHRM 355 Introductory Pharmacy Practice Experience I	Institutional
Melrose Pharmacy - Melrose, MN	Kristie Giesler, Jeffrey Sawyer	PHRM 451L Introductory Pharmacy Practice Experience II, PHRM 451L Introductory Pharmacy Practice Experience I	Rural
Most Pharmacy - Prescott, WI	Randy Most	Community Advanced	Community
Napoleon Drug - Napoleon, ND	Charlotte Young	PHRM 455 Introductory Pharmacy Practice Experience II	Rural
National Association of Boards of Pharmacy - Mount Prospect, IL	Maureen Schanck	Administration	Elective
ND Board of Pharmacy - Bismarck, ND	Pharmacy Manager Mark Hardy	Health Care Policy, Management	Elective
ND Pharm Association (NDPhA) - Bismarck, ND	Mike Schwab	Health Care Policy	Elective
ND Pharmacy - Dickinson, ND	Daniel Duletski, Dawn Pruitt	Community Advanced, PHRM 451L Introductory Pharmacy Practice Experience II, PHRM 451L Introductory Pharmacy Practice Experience I	Community
ND Senator/Legislative - Anderson	Howard Anderson	Health Care Policy	Elective
NDSU - Academic Leadership/Naughton	Cynthia Naughton	Academic	Elective
NDSU - Academic/ Naughton	Cynthia Naughton	Academic	Elective
NDSU - Academic/Brown - Fargo, ND	Assoc Professor Wendy Brown	Academic	Elective
NDSU - Academic/Marvanova - Fargo, ND	Marketa Marvanova	Academic	Elective
NDSU - Academic/Miller - Fargo, ND	Chair of the Dept Donald Miller	Academic	Elective
NDSU - Concept Pharmacy - Fargo, ND	Asst Professor Heidi Eukel, Assoc Professor Jeanne Frenzel, Assoc Professor Heidi Eukel	Academic	Elective
NDSU - Research/Brooks - Fargo, ND	Amanda Brooks	Research	Elective
NDSU - Research/Cernusca - Fargo, ND	Dan Cernusca	Research	Elective
NDSU - Research/Jarajapu - Fargo, ND	Yagna Jarajapu	Research	Elective
NDSU - Research/Singh - Fargo, ND	Chair of the Dept Jagdish Singh	Research	Elective
NDSU - Wellness Center Pharmacy - Fargo, ND	Alicia Fitz	Community Advanced	Elective
Noble Drug - Baudette, MN	Stuart Noble	Ambulatory Care, Rural	Ambulatory Care Rural
Nord's Pharmacy & Gifts - Fosston, MN	Ruth Fonder	PHRM 451L Introductory Pharmacy Practice Experience II, PHRM 451L Introductory Pharmacy Practice Experience I	Rural
North Dakota State Hospital - Jamestown, ND	Kim Korstjens	Institutional, PHRM 352L Introductory Pharmacy Practice Experience II, PHRM 352L Introductory Pharmacy Practice Experience I	Elective
North Dakota State University	Asst Professor Ben Law, Professor Sanku Mallik	1 Evaluation Preview, PHRM 340 Pathophysiology I, PHRM 341 Pathophysiology II	Elective
North Memorial Hospital - Robbinsdale, MN - Humphrey Cancer Clinic	Erin Kelley, Jeremy Whalen	Oncology	Elective
North Memorial Hospital - Robbinsdale, MN	Mary Foss	Acute Care, Critical Care, Emergency Room Encounter, Institutional	Elective
Northfield Hospital- Northfield, MN	Gary Anderson, Tricia Hagedorn, Uriah Peterson	Acute Care, Institutional	Institutional
Northfield Pharmacy-Northfield, MN	Owner Rob Anderson	Community Advanced	Community
Northport Drug - Fargo, ND	Allison Chapin	PHRM 451L Introductory Pharmacy Practice Experience II, PHRM 451L Introductory Pharmacy Practice Experience I	Community
NuCara Long-Term Care Pharmacy - Valley City, ND	David Dutt, Pharmacist in Charge Angela Thompson	Long Term Care	Elective
NuCara Pharmacy (formerly Foss Drug)- Valley City, ND	Sarah Ressler, Pharmacist in Charge Angela Thompson	Community Advanced, PHRM 455 Introductory Pharmacy Practice Experience II, PHRM 455 Introductory Pharmacy Practice Experience I	Community Rural
NuCara Pharmacy 38 - Hawley, MN	Lynn Grani	PHRM 455 Introductory Pharmacy Practice Experience II, Rural	Rural
Oakes Drug - Oakes, ND	Michael Spiese	PHRM 451L Introductory Pharmacy Practice Experience II, PHRM 451L Introductory Pharmacy Practice Experience I	Rural
Olmsted Medical Center - Rochester, MN	Emily Batterson	Institutional, PHRM 352L Introductory Pharmacy Practice Experience II, PHRM 352L Introductory Pharmacy Practice Experience I	Institutional
Onamia Drug - Onamia, MN - 516 Main St.	Ed Huppler	Rural	Rural
OneOme - Minneapolis, MN - 807 Broadway St NE	Megan Adelman, Kathleen Bosse	Pharmacogenomics	Elective
Optioncare a Division of Walgreens - Fort Myers, FL - Home Infusion - 14580 Global Pkwy	Karen Voiles-Leaders	Ambulatory Care	Ambulatory Care

OptionCare a Division of Walgreens - Roseville, MN	Alexandra Demello, David Groen	Ambulatory Care, Home Infusion	Ambulatory Care
OptionCare a Division of Walgreens - Sauk Rapids, MN	Dan Dixon, Pharmacy Supervisor Tim Magarian	Ambulatory Care, Home Infusion	Ambulatory Care
Ortonville Area Health Services-Ortonville, MN	Christian Duruji, Chet Messmer	Institutional, PHRM 352L Introductory Pharmacy Practice Experience I, PHRM 451L Introductory Pharmacy Practice Experience II, PHRM 455 Introductory Pharmacy Practice Experience III	Rural Institutional
Ott Drug Store - Deer River, MN	Robert Ott	PHRM 451L Introductory Pharmacy Practice Experience II, PHRM 455 Introductory Pharmacy Practice Experience III	Rural
Palisade Pharmacy - Palisade, CO	Walt Jorgensen	Community Advanced	Community
Park Nicollet Health Services - St. Louis Park, MN - 3850 Park Nicollet Blvd	Amy Gannon, Sean Stewart	Ambulatory Care	Ambulatory Care
Parker Pharmacy - Parker, SD	Pharmacy Manager Megan Binger	Rural	Rural
Paul Bilden Pharmacy - Northwood, ND	Wade Bilden	PHRM 451L Introductory Pharmacy Practice Experience II, PHRM 455 Introductory Pharmacy Practice Experience III	Rural
Pelican Drug - Pelican Rapids, MN	Don Perrin	PHRM 451L Introductory Pharmacy Practice Experience II, PHRM 455 Introductory Pharmacy Practice Experience III	Rural
Perham Memorial Hospital - Perham, MN	Pharmacist Dave Otterness, Duane Wallace	Institutional, PHRM 355 Introductory Pharmacy Practice Experience I, PHRM 451L Introductory Pharmacy Practice Experience II, PHRM 455 Introductory Pharmacy Practice Experience III	Institutional Rural
Pharmacy Specialties - Sioux Falls, SD	Cheri Kraemer	Compounding	Elective
Pharmerica - Largo, FL	RPH Pam Johnson, Laurel Larsen	Ambulatory Care, Compounding, Long Term Care	Ambulatory Care
PharMerica - Rapid City, SD	Kate Mires	Compounding, Long Term Care	Elective
Pointe Medical Pharmacy - Orange Park, FL	Pharmacy Manager Michael (Alvin) McClain	Community Advanced	Community
Prairie Lakes Hospital - Watertown, SD	Sara Spilde	Institutional, PHRM 355 Introductory Pharmacy Practice Experience I, PHRM 451L Introductory Pharmacy Practice Experience II, PHRM 455 Introductory Pharmacy Practice Experience III	Institutional
PrairieCare - Brooklyn Park, MN - 9400 Zane Ave N	Ross Hemmer	Psychiatry	Elective
Prescription Center Pharmacy - Fargo, ND	Pharmacy Manager Shayla Donnelly	Community Advanced, PHRM 455 Introductory Pharmacy Practice Experience III	Community
PrimeWest Health - Alexandria, MN	Pharmacy Manager Ann Ehlert	Pharmacoeconomics	Elective
Rainy Lake Med Ctr - International Falls, MN	Katie Chezick	Acute Care, Institutional, PHRM 355 Introductory Pharmacy Practice Experience I, PHRM 451L Introductory Pharmacy Practice Experience II, PHRM 455 Introductory Pharmacy Practice Experience III	Rural Acute Care Institutional
Red Lodge Drug - Red Lodge, MT	Craig Erickson, Shirley Erickson	Rural	Rural
Regions Hospital - St. Paul, MN - Acute Care	Duyen Truong Le, Mary Ullman	Acute Care	Acute Care
Regions Hospital - St. Paul, MN - Community	Anna Christensen	Community Advanced	Community
Regions Hospital - St. Paul, MN - Infectious Disease	Mary Ullman	Infectious Disease	Elective
Regions Hospital - St. Paul, MN - Institutional	Craig Harvey	Institutional, PHRM 352L Introductory Pharmacy Practice Experience I, PHRM 451L Introductory Pharmacy Practice Experience II, PHRM 455 Introductory Pharmacy Practice Experience III	Institutional
Regions Hospital - St. Paul, MN - Patient Care	Clinical Pharmacist Eric Hoberg, Clinical Pharmacist Bill Plantor	Patient Care	Elective
Regions Hospital - St. Paul, MN - Patient Care Trauma/Burn Care	Jessica Zierke	Patient Care	Elective
Regions Hospital - St. Paul, MN - Psychiatry	Jacob Held	Psychiatry	Elective
Ridgeview Medical Center - Waconia, MN	Kathleen Bosse, Annie Hegg	Acute Care, Institutional, PHRM 355 Introductory Pharmacy Practice Experience I, PHRM 451L Introductory Pharmacy Practice Experience II, PHRM 455 Introductory Pharmacy Practice Experience III	Institutional Acute Care
Rite Aid Pharmacy - Aloha, OR	Joe Gonzales	Community Advanced	Community
Rite Aid Pharmacy - Auburn, WA - 1231 Auburn Way N.	Nishy Hayre	Community Advanced	Community
Rite Aid Pharmacy - Beaverton, OR	Vesna Puzic	Community Advanced	Community
Rite Aid Pharmacy - Brooklyn, NY	James Dam	Community Advanced	Community
Rite Aid Pharmacy - Eugene, OR - 57 W. 29th Ave	Alan Thein	Community Advanced	Community
Rite Aid Pharmacy - Fort Collins, CO - 1103 W Prospect Rd	Douglas Jackson, Neill Woest	Community Advanced	Community
Rite Aid Pharmacy - Hillsboro, OR - 2021 NW 185th Ave	Ronald Powell	Community Advanced	Community
Rite Aid Pharmacy - Martinez, GA - 377 Fury's Ferry Road	Adeola Oke	Community Advanced	Community
Rite Aid Pharmacy - Nashville, TN - 2416 West End Ave.	Tri Dang, Aderson Siffard	Community Advanced	Community
Rite Aid Pharmacy - New York, NY - 408 Grand Ave.	Rudy Lopez	Community Advanced	Community

Rite Aid Pharmacy - Park City, UT	Leslie Crabb	Community Advanced	Community
Rite Aid Pharmacy - Pittsburgh, PA - 3434 William Penn Hwy	Erin Kirby	Community Advanced	Community
Rite Aid Pharmacy - Pottstown, PA - 1140 Town Square Rd	Kelly Toth	Community Advanced	Community
Rite Aid Pharmacy - Provo, UT	Pharmacy Manager Nathan Christian	Community Advanced	Community
Rite Aid Pharmacy - Shreveport, LA - 761 Pierremont	Kyla Fulco	Community Advanced	Community
Rite Aid Pharmacy - Taylorsville, UT - 1837 W 4700 S	Judy Chung, Phung Matthews	Community Advanced	Community
Rite Aid Pharmacy - Temecula, CA - 39782 Winchester Road	Anthony Rowley	Community Advanced	Community
RiverView Health - Crookston, MN	Charles Eisenberg, Brian Erickson	Institutional, PHRM 352L Introductory Pharmacy Practice Experie	Institutional
Riverwood Health Care Center - Aitkin, MN	Shawn McCusker, Spencer Page	Community Advanced, Institutional, PHRM 455 Introductory Phar	Institutional Rural
Rolla Drug - Rolla, ND	Carolyn Counts, Steven McAtee	PHRM 451L Introductory Pharmacy Practice Experience II, PHRM 4	Rural
Safeway Pharmacy - Anchorage, AK - 4000 W Dimond Blvd	Anne Crowell, Nathan Jensen	Community Advanced	Community
Safeway Pharmacy - Anchorage, AK (Store #1809) - 5600 Debarr Rd	Karen Hoplin, Ashley Tarver	Community Advanced	Community
Safeway Pharmacy - Bozeman, MT - 901 West Main St.	Jeremy Porter	Community Advanced	Community
Safeway Pharmacy - Colorado Springs, CO - 5060 N. Academy Blvd	Kevin Duncan	Community Advanced	Community
Safeway Pharmacy - Coolidge, AZ (Store #1732) - 1449 N. Arizona Blvd	Cristanna Sturtevant	Community Advanced	Community
Safeway Pharmacy - Denver, CO - 6440 E Yale Ave	Lisa Kennedy	Community Advanced	Community
Safeway Pharmacy - Federal Way, WA - 1207 S 320th St.	Julie Cho	Community Advanced	Community
Safeway Pharmacy - Fountain Hills, AZ - 13733 Fountain Hills Blvd	Gene Laluk	Community Advanced	Community
Safeway Pharmacy - Goodyear, AZ	Courtney Montenegro	Community Advanced	Community
Safeway Pharmacy - Honolulu, HI - 1234 S Beretania St.	Tiffany Fujii	Community Advanced	Community
Safeway Pharmacy - Honolulu, HI - 888 Kapahulu Ave	Alanna Isobe	Community Advanced	Community
Safeway Pharmacy - Newcastle, WA	George Weiss	Community Advanced	Community
Safeway Pharmacy - Polson, MT	Kacie Hendricks	Rural	Rural
Safeway Pharmacy - Portland, OR - 2800 SE Hawthorne Blvd	Shelly Jones	Community Advanced	Community
Safeway Pharmacy - Portland, OR - 3930 SE Powell Blvd	Elizah Owens	Community Advanced	Community
Safeway Pharmacy - Portland, OR 1010 SW Jefferson	Mike Peizner	Community Advanced	Community
Safeway Pharmacy - Renton, WA - 4300 NE 4th St.	Eric Ho, Jia Su	Community Advanced	Community
Safeway Pharmacy - Seattle, WA - 1423 NW Market St	Jenny Grant	Community Advanced	Community
Safeway Pharmacy - Seattle, WA - 2201 E Madison St.	Cory Kantorowicz	Community Advanced	Community
Safeway Pharmacy - Soldotna, AK	Jared Rawlings	Rural	Community
Safeway Pharmacy- Newberg, OR (Store 2623)	Pete Toomey	Community Advanced	Community
Sakakawea Medical Center - Hazen, ND - Institutional	Alyssa Kelsch	Institutional, PHRM 355 Introductory Pharmacy Practice Experien	Institutional
Sam's Club Pharmacy - Shreveport, LA - 7400 Youree Dr	Pharmacy Manager James Southern	Community Advanced, Management	Community Elective
Samuelsons' Drug - Starbuck, MN	Pharmacy Manager Don Samuelson	Rural	Rural
Sanford Aberdeen Medical Center - Aberdeen, SD - Acute Care	Dirctor of Pharmacy Sheryl Aufenkamp, Billie Bartel, Clinical PH	Acute Care, Administration	Acute Care
Sanford Aberdeen Medical Center - Aberdeen, SD - Amb Care	Billie Bartel	Ambulatory Care	Ambulatory Care
Sanford Aberdeen Medical Center - Aberdeen, SD - Anticoag	Billie Bartel	Ambulatory Care, Anticoagulation	Elective
Sanford Aberdeen Medical Center - Aberdeen, SD - Institutional	Billie Bartel	Administration, Institutional	Institutional
Sanford Bemidji Medical Center - Bemidji, MN	Alyssa Carlson, Erin Folland, Sean Tingum, Matthew Webb	Acute Care, Home Infusion, Institutional, Oncology, PHRM 352L In	Institutional Acute Care

Sanford Health - Bismarck, ND - Acute Care	Clinical Pharmacist Alison Black, Clinical Pharmacist Andrea Ho	Acute Care	Acute Care
Sanford Health - Bismarck, ND - Acute Care/Pediatrics	Heather Van Ningen	Acute Care	Acute Care
Sanford Health - Bismarck, ND - Critical Care	Clinical Pharmacist John Savageau	Critical Care	Elective
Sanford Health - Bismarck, ND - Informatics	Greg Fritz	Informatics	Elective
Sanford Health - Bismarck, ND - Institutional	Clinical Pharmacist Alison Black, Michelle Carson, Britni Gapp,	Acute Care, Institutional, PHRM 355 Introductory Pharmacy Pract	Institutional
Sanford Health - Bismarck, ND - Out Patient Infusion Center	Clinical Pharmacist Kurt Regstad	Outpatient Infusion	Elective
Sanford Health - Thief River Falls, MN - Institutional	Donna Harlow	Institutional, PHRM 352L Introductory Pharmacy Practice Experie	Institutional
Sanford Health Clinic - Worthington, MN	Bharat Patel	Ambulatory Care	Ambulatory Care
Sanford Health Clinic Pharmacy - Bemidji, MN - Community	Gretchen Bonik, Sheila Gilling	Clinic Pharmacy (Inactive), Community Advanced, PHRM 451L Int	Community Institutional
Sanford Health Internal Medicine Medical Home - Gugel-Bryant - (Southpointe) - Fargo, ND	Douglas Gugel-Bryant, Monte Roemmich	Ambulatory Care	Ambulatory Care
Sanford Health Internal Medicine Medical Home - Petry - (Southpointe) - Fargo, ND	Asst Professor Natasha Petry	Ambulatory Care	Ambulatory Care
Sanford Health Jackson Medical Center - Jackson, MN	Holly Nestegard	Acute Care, Institutional, PHRM 355 Introductory Pharmacy Pract	Institutional
Sanford Health North - Fargo, ND - Community	Pharmacy Manager Tammie Dohman, Lisa Johnson	Clinic Pharmacy (Inactive), Community Advanced	Community
Sanford Health North - Fargo, ND - Home Infusion	Chip Storandt	Ambulatory Care	Ambulatory Care
Sanford Health North - Fargo, ND - Institutional	Justin Jones, Brien Nelson, Emily Perry	Institutional, PHRM 352L Introductory Pharmacy Practice Experie	Institutional
Sanford Health North - Fargo, ND - Oncology	Lisa Narveson	Oncology	Elective
Sanford Health North - Fargo, ND - Patient Care	Whitney Richman, Kelsey Wolfe Hunter	Patient Care	Elective
Sanford Health North - Fargo, ND - Roger Maris Cancer Center	Jessina Mohl, Jocelyn Mohs	Ambulatory Care	Ambulatory Care
Sanford Health South University (South Campus) - Fargo, ND - Dialysis	Stacy Belehar, Katie Galbreath, Hannah Surma	Nephrology	Elective
Sanford Health South University (South Campus) - Fargo, ND - Institutional	Kristen LeClair, Clinical Pharmacist Steven Spanier, Gayle Ziegl	Institutional, PHRM 355 Introductory Pharmacy Practice Experien	Institutional
Sanford Health South University (South Campus) - Fargo, ND - Psychiatry	Assoc Professor Amy Werremeyer	Acute Care, Psychiatry	Elective
Sanford Medical Center - Sioux Falls, SD - Anticoagulation	Prog Dir for Anticoagulation Services Michael Gulseth	Ambulatory Care, Anticoagulation	Ambulatory Care
Sanford Medical Center - Sioux Falls, SD - Institutional	Patricia Aubert	Institutional	Institutional
Sanford Medical Center Fargo (West Campus) - Fargo, ND - Acute Care - Kelsch	Asst Professor Michael Kelsch	Acute Care	Acute Care
Sanford Medical Center Fargo (West Campus) - Fargo, ND - Acute Care - Non-Faculty	Matthew Carlson, Sydney Johnk, Megan Magle, Elizabeth Mon	Acute Care	Acute Care
Sanford Medical Center Fargo (West Campus) - Fargo, ND - Critical Care	Jodi Degrote, Breanna Jones	Critical Care, Infectious Disease	Elective
Sanford Medical Center Fargo (West Campus) - Fargo, ND - Health System Pharmacy Administration	David Leedah, Lead Pharmacist Nathan Leedah, Clinical Pharm	Administration, Management	Elective
Sanford Medical Center Fargo (West Campus) - Fargo, ND - Infectious Disease	Courtney Horvat, Jeana Mork-Youness, Emily Perry	Infectious Disease	Elective
Sanford Medical Center Fargo (West Campus) - Fargo, ND - Informatics	Preston Forsberg	Informatics	Elective
Sanford Medical Center Fargo (West Campus) - Fargo, ND - Institutional	Clinical Pharmacist Anne Meyer, Elizabeth Monson, Cody Yoko	Institutional, PHRM 355 Introductory Pharmacy Practice Experien	Institutional
Sanford Medical Center Fargo (West Campus) - Fargo, ND - Patient Care	Brianna Stock	Patient Care	Elective
Sanford Medical Center Fargo (West Campus) - Fargo, ND - Pediatrics	Julia Muzzy Williamson	Pediatrics	Elective
Sanford Medical Center Fargo (West Campus) - Fargo, ND - Surgery	Clinical Pharmacist Todd Chapin	Surgery	Elective
Schmitz's Economart Pharmacy - Spooner, WI	Pharmacy Manager Angela Tellefson	Rural	Rural
Seip Drug - Battle Lake, MN	Jay Olson	PHRM 451L Introductory Pharmacy Practice Experience II, PHRM 4	Rural
Seip Drug - Bertha, MN	Jenna Anderson	Ambulatory Care, PHRM 451L Introductory Pharmacy Practice Exp	Rural
Seip Drug - Henning, MN	Pharmacy Manager Benjamin Geyer	PHRM 455 Introductory Pharmacy Practice Experience II, Rural	Rural
Seip Drug - New York Mills, MN	Pharmacy Manager Mitch Kroger	PHRM 455 Introductory Pharmacy Practice Experience II, Rural	Rural
Seip Drug - Park Rapids, MN - 101 4th St. E.	April Grieger, Jackie Rehm	PHRM 455 Introductory Pharmacy Practice Experience II, Rural	Rural
Seip Drug - West Fargo, ND	Brianne Wilcox	Community Advanced	Community

Seip Prescription Shoppe - Perham, MN	Pharmacy Manager Jodie Trites	Rural	Rural
Service Drug - Williston, ND	Lisa Borreson	PHRM 451L Introductory Pharmacy Practice Experience II, PHRM 4	Community
Service Drug & Gift - Harvey, ND	Chad Ziegler	PHRM 451L Introductory Pharmacy Practice Experience II, PHRM 4	Rural
Shapiro Pharmacy (Hennepin County Medical Center) - Minneapolis, MN - 701 Park Ave. N	Matt Hammer	Ambulatory Care, Community Advanced	Community
Sidney Health Center/Hospital Pharmacy - Sidney, MT	Roland Achenjang, Lynn Beyerle, Erin Ellingson	PHRM 352L Introductory Pharmacy Practice Experience I , PHRM 3	Institutional
SKripts Pharmacy - West Fargo, ND - 750 23rd Ave E (Inside Costco)	Steve Kawulok	Community Advanced, PHRM 455 Introductory Pharmacy Practice	Community
Smith Pharmacy - Little Chute, WI - 1800 Freedom Rd	Nic Smith	Community Advanced	Community
Sonterra RX - San Antonio, TX	Jeanne Schroeder	Compounding	Elective
Southpointe Pharmacy - Fargo, ND	Jeff Jacobson, Sally Klabo, David Olig	Community Advanced, PHRM 451L Introductory Pharmacy Practic	Community
Spearfish Regional Hospital - Spearfish, SD	Tiffany Clendenen	Institutional	Institutional
St. Aloisius Medical Center - Harvey, ND	Preceptor Toni Bromley	Institutional, PHRM 352L Introductory Pharmacy Practice Experie	Rural
St. Andrew's Health Center - Bottineau, ND	Amy Gullet	Acute Care, PHRM 352L Introductory Pharmacy Practice Experien	Institutional
St. Rose Dominican Hospital - Henderson, NV	Elizabeth Gonzalez	Infectious Disease	Elective
Stapley's Pharmacy - St. George, UT	Brad Stapley	Community Advanced	Community
Sterling Long Term Care Pharmacy - Owatonna, MN	Charlie Olson	Long Term Care	Elective
Sterling Long Term Care Pharmacy - Rushford, MN	Sherwood Peterson	Long Term Care, Rural	Elective
Stevens Community Medical Center - Morris, MN	Steve Lienemann, Director of Pharmacy Evan Varga	Institutional, PHRM 352L Introductory Pharmacy Practice Experie	Institutional
Sutherland Pharmacy - Brighton, MA	John Leary	Community Advanced	Community
Sward Kemp Snyder Drug - Redwood Falls, MN	Magan Rasmussen	PHRM 451L Introductory Pharmacy Practice Experience II, PHRM 4	Rural
Swift County - Benson Hospital - Benson, MN	Pharmacy Director Melissa Hampton	Institutional, PHRM 355 Introductory Pharmacy Practice Experien	Institutional
Tara's Thrifty White Pharmacy - Oakes, ND	Kathleen Powlish, Asst Professor Tara Schmitz	PHRM 451L Introductory Pharmacy Practice Experience II, PHRM 4	Rural
Target Pharmacy - Alexandria, MN	Tim Ellison	Community Advanced, PHRM 451L Introductory Pharmacy Practic	Community
Target Pharmacy - Anchorage, AK - 1200 North Muldoon Rd	Kerry Williams	Community Advanced	Community
Target Pharmacy - Andover, MN	Nathan Blake	PHRM 451L Introductory Pharmacy Practice Experience II, PHRM 4	Community
Target Pharmacy - Apple Valley, MN - 15150 Cedar Ave	Shanna Nordeen, Ryk Sharpe	PHRM 451L Introductory Pharmacy Practice Experience II, PHRM 4	Community
Target Pharmacy - Apple Valley, MN - Management - 15560 Pilot Knob Rd	Melissa Nord	Management	Elective
Target Pharmacy - Arvada, Co - 5071 Kipling Street	Daniel Vaudt	Community Advanced	Community
Target Pharmacy - Baxter, MN	Bret Steffen	PHRM 451L Introductory Pharmacy Practice Experience II, PHRM 4	Community
Target Pharmacy - Bemidji, MN	Kari Timms	PHRM 451L Introductory Pharmacy Practice Experience II, PHRM 4	Community
Target Pharmacy - Bloomington, MN	Jivony Law	Community Advanced	Community
Target Pharmacy - Brooklyn Park, MN - 7535 W Broadway Ave	Shaun Anderson, Susan Thrun	Community Advanced	Community
Target Pharmacy - Brooklyn Park, MN - Management- 7000 Target Parkway N - Turrentine	Amber Turrentine	Management	Elective
Target Pharmacy - Burnsville, MN	Anne Thompson	Community Advanced, PHRM 451L Introductory Pharmacy Practic	Community
Target Pharmacy - Champlin, MN	Chad Lachowitz	Community Advanced, PHRM 451L Introductory Pharmacy Practic	Community
Target Pharmacy - Chanhassen, MN	Christine Joyce	PHRM 451L Introductory Pharmacy Practice Experience II, PHRM 4	Community
Target Pharmacy - Chattanooga, TN - 1816 Gunbarrel Rd	Tanya Manoni	Community Advanced	Community
Target Pharmacy - Chicago, IL - 1 South State Street	Jean Moy	Community Advanced	Community
Target Pharmacy - Fridley, MN - 53rd Ave NE	William Johnson	Management	Community
Target Pharmacy - Ft Myers, FL - 10000 Gulf Center Dr	Michael Scotti, Rachel Voigt	Community Advanced	Community
Target Pharmacy - Gig Harbor, WA - 11400 51st Ave NW	Evan Mayo	Community Advanced	Community

Target Pharmacy - Hudson, WI	Andy Lindloff	Community Advanced	Community
Target Pharmacy - Lakeville, MN	Amanda Macari, Chelsea Petrich	PHRM 451L Introductory Pharmacy Practice Experience II, PHRM 4	Community
Target Pharmacy - Los Angeles, CA - 735 South Figueroa St.	Annie Song	Community Advanced	Community
Target Pharmacy - Los Angeles, CA - Eagle Rock Plaza 2626 East Colorado Blvd	Ana Chlasian	Community Advanced	Community
Target Pharmacy - Maple Grove, MN	Lindsey Kosman, Mary Raven	Community Advanced, PHRM 451L Introductory Pharmacy Practic	Community
Target Pharmacy - Minneapolis, MN	Heather Johnson, Pharmacy Manager Desri Rogstad	PHRM 451L Introductory Pharmacy Practice Experience II, PHRM 4	Community
Target Pharmacy - Monticello, MN	Thea Anderson	Community Advanced, PHRM 455 Introductory Pharmacy Practice	Community
Target Pharmacy - Moorhead, MN	Nicholle Binek, Kristie Lockhart, Kaila Wilner	PHRM 451L Introductory Pharmacy Practice Experience II, PHRM 4	Community
Target Pharmacy - Plantation, FL - 8201 SW 3rd St	Ramin Eslampanah	Community Advanced, PHRM 455 Introductory Pharmacy Practice	Community
Target Pharmacy - Plymouth, MN	Olivia Cole	Community Advanced, PHRM 451L Introductory Pharmacy Practic	Community
Target Pharmacy - Rochester, MN - 3827 Marketplace Dr.	James Johnson	PHRM 451L Introductory Pharmacy Practice Experience II, PHRM 4	Community
Target Pharmacy - Roseville, MN	Jennifer McCarthy	PHRM 451L Introductory Pharmacy Practice Experience II, PHRM 4	Community
Target Pharmacy - Savage, MN	Katie Heidemann	PHRM 451L Introductory Pharmacy Practice Experience II, PHRM 4	Community
Target Pharmacy - Seattle, WA - 302 Northeast Northgate Way	Tracey Thai	Community Advanced	Community
Target Pharmacy - Shoreview, MN - 3800 Lexington Ave	Ankit Patel	Community Advanced, PHRM 455 Introductory Pharmacy Practice	Community
Target Pharmacy - Sioux Falls, SD	Christine Burg	PHRM 451L Introductory Pharmacy Practice Experience II, PHRM 4	Community
Target Pharmacy - South Jordan, UT 11525 Pkwy Dr.	Josh Fitzgerald	Community Advanced	Community
Target Pharmacy - St Cloud, MN - West Division St	Rob Karpel	PHRM 451L Introductory Pharmacy Practice Experience II, PHRM 4	Community
Target Pharmacy - St Paul, MN - Surburban Ave	Peter Horn	PHRM 451L Introductory Pharmacy Practice Experience II, PHRM 4	Community
Target Pharmacy - St. Louis Park, MN - Hwy 100	Larry Tebbe	PHRM 451L Introductory Pharmacy Practice Experience II, PHRM 4	Community
Target Pharmacy - Waterloo, IA - 1501 E San Marnan Dr.	Laura Krogh	Community Advanced	Community
Target Pharmacy - Wylie, TX	Russell Gilbert	Community Advanced	Community
The Apothecary - Sartell, MN	Owner Steve Anderson	Community Advanced, Compounding, PHRM 455 Introductory Ph	Community
The Medicine Shoppe - Bismarck, ND	Jodi Gader	Community Advanced	Community
The Medicine Shoppe - Chippewa Falls, WI	Pharmacy Owner Paul Winger	Community Advanced	Community
The Medicine Shoppe - Dickinson, ND - 1571 W Villard	Brandi Ollerman	Community Advanced, PHRM 455 Introductory Pharmacy Practice	Community
The Medicine Shoppe - Fargo, ND - Management	Asst Professor Ross Wilhelm	Management	Elective
The Medicine Shoppe - Fargo, ND	Karl Krenz, Asst Professor Ross Wilhelm	Community Advanced, Management, PHRM 451L Introductory Ph	Community
The Medicine Shoppe - Jamestown, ND	John Fugleberg, Matthew Perkins	Community Advanced, PHRM 451L Introductory Pharmacy Practic	Community
The Medicine Shoppe - Minot, ND	Patrick Delvo	Community Advanced, PHRM 451L Introductory Pharmacy Practic	Community
Thrifty Drug LTD - Fargo, ND	Pharmacy Manager Tonya Soper	Community Advanced, PHRM 451L Introductory Pharmacy Practic	Community
Thrifty Drug Southgate - Fargo, ND	Pharmacy Manager Kristi Gilbertson	Community Advanced, PHRM 451L Introductory Pharmacy Practic	Community
Thrifty White Drug - Linton, ND	Pharmacy Manager LeAnne Hulm	PHRM 451L Introductory Pharmacy Practice Experience II, PHRM 4	Rural
Thrifty White Pharmacy - Ada, MN	Pharmacy Manager Ray Traut	Rural	Rural
Thrifty White Pharmacy - Alexandria, MN	Ray Glaser, Kimberly Wilmesmeier	Community Advanced, PHRM 451L Introductory Pharmacy Practic	Community
Thrifty White Pharmacy - Bagley, MN	Steven Beltz	PHRM 455 Introductory Pharmacy Practice Experience II, Rural	Rural
Thrifty White Pharmacy - Beaver Dam, WI	Allison Walker	Community Advanced	Community
Thrifty White Pharmacy - Bemidji, MN	Cora Strodtman	Community Advanced, PHRM 455 Introductory Pharmacy Practice	Community
Thrifty White Pharmacy - Bismarck, ND - Inside Cashwise -1140 E Bismarck Expressway	Lisa McCormick	Community Advanced	Community
Thrifty White Pharmacy - Bismarck, ND	Julie Boyer, Ken Ficek	Community Advanced, PHRM 451L Introductory Pharmacy Practic	Community

Thrifty White Pharmacy - Brainerd, MN	Brianna Pulkrabek	Community Advanced, PHRM 455 Introductory Pharmacy Practice	Community
Thrifty White Pharmacy - Cavalier, ND - 102 Division Ave	Janae Heuchert	PHRM 451L Introductory Pharmacy Practice Experience II, PHRM 4	Rural
Thrifty White Pharmacy - Cloquet, MN	Nat Willgohs	Community Advanced, PHRM 455 Introductory Pharmacy Practice	Community
Thrifty White Pharmacy - Cold Spring, MN	Kevin Dockendorf	Rural	Rural
Thrifty White Pharmacy - Detroit Lakes, MN	Haylee Sirjord	Community Advanced, PHRM 451L Introductory Pharmacy Practice	Community
Thrifty White Pharmacy - Devils Lake, ND - Bell Drug 5th St.	Alyssa Engebretson	Community Advanced, PHRM 455 Introductory Pharmacy Practice	Rural
Thrifty White Pharmacy - Devils Lake, ND - College Drive	Marcus Lunde	Community Advanced, PHRM 451L Introductory Pharmacy Practice	Community
Thrifty White Pharmacy - Dickinson, ND - 2265 3rd Ave W	Isaac Akinola	Community Advanced, PHRM 455 Introductory Pharmacy Practice	Community
Thrifty White Pharmacy - Duluth, MN - Care Coordination	Matt Just	Long Term Care, Management, Patient Care	Elective
Thrifty White Pharmacy - Duluth, MN - Consulting	Melanie Kluck	Long Term Care	Elective
Thrifty White Pharmacy - Duluth, MN	Grace Armbruster	Community Advanced, PHRM 455 Introductory Pharmacy Practice	Community
Thrifty White Pharmacy - Fargo, ND - Ambulatory Care	Andrew Fiske	Ambulatory Care	Ambulatory Care
Thrifty White Pharmacy - Fargo, ND - Bethany on 42nd	Pharmacy Manager David DeBuhr, Mgr. Cent/LTC refill Centers	Long Term Care	Community
Thrifty White Pharmacy - Fargo, ND - Cashwise	Clinical Pharmacist Tavia Haglund	Community Advanced, PHRM 451L Introductory Pharmacy Practice	Community
Thrifty White Pharmacy - Fargo, ND - Central Refill	Katti Kraemer	Mail Order Pharmacy	Elective
Thrifty White Pharmacy - Fargo, ND - Central Refill -Management	Mgr. Cent/LTC refill Centers Tanya Schmidt	Management	Elective
Thrifty White Pharmacy - Fergus Falls, MN - Lincoln Ave	Jacque Wienbar	Community Advanced, PHRM 451L Introductory Pharmacy Practice	Community
Thrifty White Pharmacy - Forest Lake, MN	Carol Keene	Community Advanced, PHRM 455 Introductory Pharmacy Practice	Community
Thrifty White Pharmacy - Grafton, ND	McKenzie Johnson	Community Advanced, PHRM 451L Introductory Pharmacy Practice	Rural
Thrifty White Pharmacy - Grand Forks, ND - 2475 32nd Ave S	Sarah Schmidt, Gary Semmens	Community Advanced, PHRM 455 Introductory Pharmacy Practice	Community
Thrifty White Pharmacy - Grand Rapids, MN	Bonita Moger	Community Advanced, PHRM 455 Introductory Pharmacy Practice	Community
Thrifty White Pharmacy - Granite Falls, MN	Chris Martinson	Rural	Rural
Thrifty White Pharmacy - Hettinger, ND	Alaina Olson	Rural	Rural
Thrifty White Pharmacy - Hibbing, MN	Bill Bonach, Sue Jacobs	Community Advanced, PHRM 455 Introductory Pharmacy Practice	Community
Thrifty White Pharmacy - Jamestown, ND - Hugo's Groc	Paul Hochhalter	Community Advanced	Community
Thrifty White Pharmacy - Jamestown, ND	Pharmacy Manager Mary Jo Dodd, Landon Rachel	Community Advanced, PHRM 451L Introductory Pharmacy Practice	Community
Thrifty White Pharmacy - Lisbon, ND - 404 Main St	Cody Behm	PHRM 455 Introductory Pharmacy Practice Experience II, Rural	Rural
Thrifty White Pharmacy - Mandan, ND	Jamie Vander Vorste	Community Advanced, PHRM 355 Introductory Pharmacy Practice	Community
Thrifty White Pharmacy - Marshall, MN	Pharmacy Manager Stacey Tischer	PHRM 451L Introductory Pharmacy Practice Experience II, PHRM 4	Community
Thrifty White Pharmacy - McGregor, MN	George Badeaux	Rural	Rural
Thrifty White Pharmacy - Milaca, MN	Pharmacy Manager Jayme Westling	Rural	Rural
Thrifty White Pharmacy - Minot, ND - Marketplace Foods	Donell Kjos	Community Advanced, PHRM 455 Introductory Pharmacy Practice	Community
Thrifty White Pharmacy - Montevideo, MN	David Arneson, Jacob Marz	PHRM 451L Introductory Pharmacy Practice Experience II, PHRM 4	Rural
Thrifty White Pharmacy - Moose Lake, MN	Kathy Madden, Kendra Metz	Ambulatory Care, Rural	Rural
Thrifty White Pharmacy - Perham, MN	Wilma Certain	PHRM 455 Introductory Pharmacy Practice Experience II	Rural
Thrifty White Pharmacy - Pierz, MN	Matt Kessler	PHRM 455 Introductory Pharmacy Practice Experience II, Rural	Rural
Thrifty White Pharmacy - Plymouth, MN - Cent LTC	Donna Feldman, Rachele Hemmer, Craig Ihry, Brad Phillips, De	Long Term Care, Management	Elective
Thrifty White Pharmacy - Plymouth, MN - Consulting	Joe Litsey, Pharmacist Andrew Weir, Jordan Wolf	Management	Elective
Thrifty White Pharmacy - Plymouth, MN - Mgmt Corp Clinical Support	Flora Harp	Management	Elective
Thrifty White Pharmacy - Plymouth, MN - Shorten	Jeff Shorten	Management	Elective

Thrifty White Pharmacy - Rochester, MN - 2018 15th St.	Rebecca McCleery	Long Term Care	Elective
Thrifty White Pharmacy - Rugby, ND	Kyle DeMontigny	PHRM 451L Introductory Pharmacy Practice Experience II, PHRM 4	Rural
Thrifty White Pharmacy - Spencer, IA	Micaela Maeyaert	Community Advanced, PHRM 455 Introductory Pharmacy Practice	Community
Thrifty White Pharmacy - Thief River Falls, MN	Mike LaSalle	Community Advanced, PHRM 451L Introductory Pharmacy Practic	Community
Thrifty White Pharmacy - Tyler, MN	Tory Radke	PHRM 455 Introductory Pharmacy Practice Experience II, Rural	Rural
Thrifty White Pharmacy - Wahpeton, ND	Paula Steeves-McDonald	Community Advanced, PHRM 451L Introductory Pharmacy Practic	Community
Thrifty White Pharmacy - Walker, MN	Terry Storm	Community Advanced, PHRM 455 Introductory Pharmacy Practice	Rural
Thrifty White Pharmacy - Warroad, MN	Bucko Thompson	PHRM 355 Introductory Pharmacy Practice Experience I, Rural	Community
Thrifty White Pharmacy - Waseca, MN	Erica Schroeder	Community Advanced, PHRM 455 Introductory Pharmacy Practice	Community
Thrifty White Pharmacy - West Fargo, ND - Consulting - 1139 30th Ave W	LTC Consultant Andrea White	Long Term Care	Elective
Thrifty White Pharmacy - West Fargo, ND	Danielle Nelson	Community Advanced, PHRM 451L Introductory Pharmacy Practic	Community
Thrifty White Pharmacy - Williston, ND	Pharmacy Manager Lynn Peterson, Sangeeta Samudre	Community Advanced, PHRM 455 Introductory Pharmacy Practice	Community
Thrifty White Pharmacy (Benson) - Morris, MN - 3 Highway 28 E	Jenny Gibson	Management, PHRM 451L Introductory Pharmacy Practice Experi	Elective Community Rural
Tioga Drug - Tioga, ND	Tim Joyce	PHRM 451L Introductory Pharmacy Practice Experience II, PHRM 4	Rural
Tom Thumb/Safeway Pharmacy - Dallas, TX	Sohaila Nikaeen	Community Advanced	Community
Tri-County Hospital - Wadena, MN	Lynn Gagner, Michelle Hinojos	Institutional, PHRM 352L Introductory Pharmacy Practice Experi	Institutional
Trinity Hospital - Acute Care - Minot, ND	Clinical Pharmacist Terry Altringer	Acute Care	Acute Care
Trinity Hospital - Institutional - Minot, ND	Aftin Boling, Lisa Loken, Clinical Pharmacist Charles Moore, Kyl	Institutional, PHRM 352L Introductory Pharmacy Practice Experi	Institutional
Trumm Drug - Alexandria, MN	Mark Trumm	Community Advanced, Management, PHRM 451L Introductory Ph	Community
Trumm Drug 11 Central Ave S - Elbow Lake, MN	Kristy Peyerl	PHRM 451L Introductory Pharmacy Practice Experience II, PHRM 4	Rural
Trumm Drug Clinic Pharmacy - Alexandria, MN - 610 30th Ave W	Allan Fettig	Community Advanced, PHRM 455 Introductory Pharmacy Practice	Community
Truven Health Analytics (Micromedex) - Greenwood Village, CO - 6200 Syracuse Way	Cynthia Beckett, Kendra Grande	Management	Elective
Turtle Lake Rexall Drug - Turtle Lake, ND	Mark Malzer, Jamie Ziebarth	PHRM 451L Introductory Pharmacy Practice Experience II, PHRM 4	Rural
University of Minnesota-Fairview Specialty Clinic (Clinic 2A)-Minneapolis, MN - Ambulatory Care	Clinical Pharmacist Lisa Hillman	Ambulatory Care	Ambulatory Care
University of Minnesota-Primary Care Center Minneapolis, MN - Ambulatory Care	Clinical Pharmacist Heidi Mandt	Ambulatory Care	Ambulatory Care
USPHS- Albuquerque Indian Health Center, NM	Pedro Solis	Ambulatory Care	Ambulatory Care
USPHS Indian Health Service - Belcourt, ND - Ambulatory Care	Tyler Lannoye, Zach Marty, Leah Miller	Ambulatory Care, PHRM 455 Introductory Pharmacy Practice Expe	Ambulatory Care
USPHS Indian Health Service - Belcourt, ND - Institutional	Tyler Lannoye	Ambulatory Care, Institutional, PHRM 355 Introductory Pharmacy	Institutional
USPHS Indian Health Service - Bemidji, MN	Michael Verdugo	Informatics	Elective
USPHS Indian Health Service - Cass Lake, MN	Joanna Ferraro, Jinny Meyer, Michael Verdugo	Ambulatory Care, PHRM 455 Introductory Pharmacy Practice Expe	Ambulatory Care
USPHS Indian Health Service - Fort Yates, ND	Lynde Monson, ThuyTien Nguyen	Ambulatory Care, Rural	Ambulatory Care
USPHS Indian Health Service - Ft Totten, ND	Amy Simon, Tana Triepke	Ambulatory Care, Rural	Ambulatory Care
USPHS Indian Health Service - Phoenix, AZ	Michelle Barbosa, Trisha McCurdy, Mizraim Mendoza, Amit Pa	Ambulatory Care	Elective
USPHS Indian Health Service - Poplar, MT	Bradley Moran	Ambulatory Care	Ambulatory Care
USPHS Indian Health Service - Rapid City, SD	William Freiberg, Jason Kinyon, Tasha Standingsoldier	Ambulatory Care, Institutional	Ambulatory Care
USPHS Indian Health Service - Red Lake, MN	Kailee Fretland, Teresa Grund, Pharmacy Director Cynthia Gun	Ambulatory Care, Institutional, PHRM 352L Introductory Pharmac	Ambulatory Care
USPHS Indian Health Service - Trenton Community Clinic Pharmacy - Trenton, ND	John Studsrud	Ambulatory Care	Ambulatory Care
USPHS Indian Health Service - White Earth, MN - Piehl	Ashley Piehl	Ambulatory Care	Ambulatory Care
USPHS Indian Health Service - White Earth, MN	Dena Smith, DeAnne Udby	Ambulatory Care, PHRM 455 Introductory Pharmacy Practice Expe	Ambulatory Care

USPHS Indian Health Service - Woodrow Wilson Keeble Memorial HCC - Sisseton, SD - Amb Care	Lori Braaten, Holly Rice, Mary Thoennes	Ambulatory Care, Rural	Ambulatory Care
USPHS Indian Health Service - Woodrow Wilson Keeble Memorial HCC - Sisseton, SD - Institutional	Maviann Krause	Institutional	Institutional
USPHS Indian Health Services - Fond du Lac - Cloquet, MN	Pharmacy Coordinator Tiffany Elton, Clinical Pharmacist Jessica	Ambulatory Care	Ambulatory Care
VA Health Care System - Anchorage, AK - Ambulatory Care	Shief, Pharmacy Service Ben Jensen	Ambulatory Care	Ambulatory Care
VA Health Care System - Anchorage, AK - Anticoagulation	Shief, Pharmacy Service Ben Jensen	Ambulatory Care, Anticoagulation	Ambulatory Care
VA Health Care System - Fargo, ND - Acute Care - Non-Faculty	Clinical Pharmacist Erin Berg-Gibbens, Clinical Pharmacist Rena	Acute Care	Elective
VA Health Care System - Fargo, ND - Ambulatory Care	Keith Forster, Tammy Gilles, Clinical Pharmacist Jonathan Hass	Ambulatory Care	Ambulatory Care
VA Health Care System - Fargo, ND - Ambulatory Care/Forster	Keith Forster	Ambulatory Care	Ambulatory Care
VA Health Care System - Fargo, ND - Ambulatory Care/Gilles	Tammy Gilles	Ambulatory Care	Ambulatory Care
VA Health Care System - Fargo, ND - Ambulatory Care/Hass	Clinical Pharmacist Jonathan Hass	Ambulatory Care	Ambulatory Care
VA Health Care System - Fargo, ND - Ambulatory Care/Welch	Justin Welch	Ambulatory Care	Ambulatory Care
VA Health Care System - Fargo, ND - Ambulatory Care/Williams	Clinical Pharmacist Cristin Williams	Ambulatory Care	Ambulatory Care
VA Health Care System - Fargo, ND - Anticoagulation	Jenna Buskohl Nasset, Caroline Chang, Jamie Jacobson	Ambulatory Care, Anticoagulation	Ambulatory Care Elective
VA Health Care System - Fargo, ND - Anticoagulation/Chang	Caroline Chang	Ambulatory Care, Anticoagulation	Ambulatory Care
VA Health Care System - Fargo, ND - Infectious Disease	Jessica Dietz	Infectious Disease	Elective
VA Health Care System - Fargo, ND - Institutional	LuWayne Barnes, Nicholas Becher, Jessica Kopp, Noah McBroom	Institutional	Institutional
VA Health Care System - Fargo, ND - Institutional/Barnes	LuWayne Barnes	Institutional, PHRM 352L Introductory Pharmacy Practice Experience	Institutional
VA Health Care System - Fargo, ND - Institutional/McBroom	Noah McBroom	Institutional	Institutional
VA Health Care System - Fargo, ND - Institutional/Myren	Wendy Myren	Institutional	Institutional
VA Health Care System - Fargo, ND - Institutional/Schmitz	Clinical Pharmacist Allison Schmitz	Institutional, PHRM 355 Introductory Pharmacy Practice Experience	Institutional
VA Health Care System - Fargo, ND - Long Term Care	Jessica Dietz	Long Term Care	Elective
VA Health Care System - Fargo, ND - Psychiatry	Adam Backlund, Pam Wolf	Psychiatry	Elective
VA Health Care System - Fargo, ND - Rohrich	Pharmacy Director Melissa Rohrich	Acute Care	Acute Care Institutional Elective Ambulatory Care
VA Health Care System - Maplewood, MN	Elizabeth Welch	Ambulatory Care	Ambulatory Care
VA Health Care System - Minneapolis, MN - Ambulatory Care	Melissa Atwood, Jenny Bolduc, PM&R Clinical Pharmacist Vinh	Ambulatory Care	Ambulatory Care
VA Health Care System - Minneapolis, MN - Ambulatory Care/Chezik	Lindsey Chezik	Ambulatory Care	Ambulatory Care
VA Health Care System - Minneapolis, MN - Ambulatory Care/Fernandes-Reese	Andyrose Fernandes-Reese	Ambulatory Care	Ambulatory Care
VA Health Care System - Minneapolis, MN - Institutional	Jenny Bolduc, PM&R Clinical Pharmacist Vinh Dao, Kelli Hall, Cl	Institutional, PHRM 352L Introductory Pharmacy Practice Experience	Institutional
VA Health Care System - Minneapolis, MN - Management	Larry Patnaude	Management	Elective
VA Health Care System - Minneapolis, MN - Pharmacoeconomics	Kevin Burns	Pharmacoeconomics	Elective
VA Health Care System - Minneapolis, MN - Psychiatry	Clinical Pharmacist Kara Wong	Psychiatry	Elective
VA Health Care System - Ramsey, MN - Northwest Metro Clinic	Amy Awker	Ambulatory Care	Ambulatory Care
VA Health Care System - Rochester, MN	Sheila Collins	Ambulatory Care, Institutional, PHRM 355 Introductory Pharmacy	Institutional Ambulatory Care
VA Health Care System - St Cloud, MN - Institutional	Assistant Chief, Pharmacy Services Richard Stambaugh	Institutional, PHRM 355 Introductory Pharmacy Practice Experience	Institutional
VA Health Care System - St. Cloud, MN - Psychiatry	MH/Psychiatry Clinical Pharmacist Renae Best	Psychiatry	Elective
Valley View Pharmacy - Bismarck, ND	Tammy Balerud, Pharmacy Owner Curt McGarvey	Long Term Care, PHRM 451L Introductory Pharmacy Practice Experience	Elective

Velva Drug - Velva, ND	Tracy Krueger	Community Advanced, PHRM 451L Introductory Pharmacy Practice Experience	Rural Ambulatory Care
Vibra Hospital - Fargo, ND	Peter Boldingh, Cynthia Burck	Acute Care, PHRM 355 Introductory Pharmacy Practice Experience	Acute Care
Vibra Hospital of The Central Dakotas - Mandan, ND	Ken Johnson, Arthur Skrundevskiy	Acute Care, PHRM 352L Introductory Pharmacy Practice Experience	Institutional Acute Care
Vizient at Sanford - Fargo, ND - Management - 501 4th St. N	Mandy Slinde	Management	Elective
Vons Safeway Pharmacy - Henderson, NV - 2667 Windmill Parkway	Lisa Rische	Community Advanced	Community
Wahpeton Drug - Wahpeton, ND	Laurie Straus, Shannon Wendorff	Community Advanced	Community
Walgreens Co. - Alexandria, MN	Pharmacy Manager Nicole Ketelsen	PHRM 451L Introductory Pharmacy Practice Experience II, PHRM 455 Introductory Pharmacy Practice Experience	Community
Walgreens Co. - Anchorage, AK - 1470 W Northern Lights Blvd	Phillip Truong	Community Advanced	Community
Walgreens Co. - Apache Junction, AZ - 2440 S Ironwood Dr	Steve Hardman	Community Advanced	Community
Walgreens Co. - Arden Hills, MN - 3585 Lexington Ave. N	Troy West	Community Advanced, PHRM 455 Introductory Pharmacy Practice Experience	Community
Walgreens Co. - Avondale, AZ 10705 W. Indian School Rd.	John Thierer	Community Advanced	Community
Walgreens Co. - Battle Ground, WA	Kristy Salley	Community Advanced	Community
Walgreens Co. - Billings, MT - 1330 Grand Ave	Brandon Mooer	Community Advanced	Community
Walgreens Co. - Brighton, CO	RXM Craig Rhodes, Perri Schneider	Community Advanced	Community
Walgreens Co. - Brooklyn Park, MN - 7700 Brooklyn Blvd	Jessica Bayer	Community Advanced	Community
Walgreens Co. - Bryan, TX - 3312 E. 29th St.	Lynde Buras	Community Advanced	Community
Walgreens Co. - Bullhead City, AZ	Christopher Kennedy	Community Advanced	Community
Walgreens Co. - Cape Coral, FL - 1543 West Cape Coral Pkwy	Brendan Ballard	Community Advanced	Community
Walgreens Co. - Cape Coral, FL - 805 East Cape Coral Pkwy	Frank Kratofil	Community Advanced	Community
Walgreens Co. - Chaska, MN	Brian Reishus	Community Advanced, PHRM 455 Introductory Pharmacy Practice Experience	Community
Walgreens Co. - Chesterfield, MO	Sean Levins	Community Advanced	Community
Walgreens Co. - Chicago, IL - 1926 W 35th St.	Jacob Kalathiveetil	Community Advanced	Community
Walgreens Co. - Chicago, IL - HIV Clinic	Brittney Mills	Ambulatory Care	Ambulatory Care
Walgreens Co. - Chicago, IL 1520 Fullerton	Marissa Langefeld	Community Advanced	Community
Walgreens Co. - Circle Pines, MN	Minh Do	Community Advanced	Community
Walgreens Co. - Cocoa Beach, FL	Anh Phan	Community Advanced	Community
Walgreens Co. - Colorado Springs, CO - 1855 Southgate Rd.	Sean McComb	Community Advanced	Community
Walgreens Co. - Cranston, RI	Matt Vitale	Community Advanced	Community
Walgreens Co. - Cross Plains, WI	Pharmacy Manager Dan Duffy	Community Advanced, Rural	Community Rural
Walgreens Co. - Dallas, TX 5742 E Mockingbird Lane	Jillian Schmidli	Community Advanced	Community
Walgreens Co. - Denver, CO - 801 16th St.	Nicole Schauer	Community Advanced	Community
Walgreens Co. - Denver, CO - So. Quebec	Tom Heissenbittel, Avani Soni	Community Advanced, Compounding	Elective Community
Walgreens Co. - Eagle River, AK - 12051 Old Glenn Hwy	Sylvain Nouvion	Community Advanced	Community
Walgreens Co. - Eau Claire, WI	Doug Streifel	Community Advanced	Community
Walgreens Co. - Edina, MN - 6975 York Ave S	Dana Penkivech	Community Advanced, PHRM 455 Introductory Pharmacy Practice Experience	Community
Walgreens Co. - Erie, CO	Duane Eshima	Community Advanced	Community
Walgreens Co. - Eugene, OR - 1675 Coburg Rd	Mason Cook	Community Advanced	Community
Walgreens Co. - Fergus Falls, MN	Zach Lange, Molly Naumann	Community Advanced, PHRM 455 Introductory Pharmacy Practice Experience	Community

Walgreens Co. - Fort Collins, CO - Harmony Rd	Thomas Brewer, Brian Dahlke, Marv Thelen	Community Advanced	Community
Walgreens Co. - Fridley, MN	Jeffrey Brenna	PHRM 451L Introductory Pharmacy Practice Experience II, PHRM 4	Community
Walgreens Co. - Gold Canyon, AZ - 6951 S Kings Ranch Rd	Junyan He	Community Advanced	Community
Walgreens Co. - Golden Valley, MN - 2500 Winnetka Ave.	Emily Jones	Community Advanced	Community
Walgreens Co. - Goodlettsville, TN	Attaya Yokley	Community Advanced	Community
Walgreens Co. - Greeley, CO	Gary Murphy	Community Advanced	Community
Walgreens Co. - Green Valley, AZ	Sophia Jurado	Community Advanced	Community
Walgreens Co. - Gresham, OR - 4285 West Powell Blvd.	David Huynh	Community Advanced	Community
Walgreens Co. - Homosassa, FL - 9427 S Suncoast Blvd	Gretchen English	Community Advanced	Community
Walgreens Co. - Honolulu, HI - 1488 Kapiolani Blvd	Sheena Hokutan, Taek Kim	Community Advanced	Community
Walgreens Co. - Honolulu, HI - 2919 Kapiolani Blvd	Paul Smith	Community Advanced	Community
Walgreens Co. - Honolulu, HI - Specialty Pharmacy - 615 Piikoi St.	Amy Song	Specialty Pharmacy	Elective
Walgreens Co. - Houston, TX - 5200 Westheimer Rd.	Sabrina Flaggs	Community Advanced	Community
Walgreens Co. - Hudson, WI - 141 Carmichael Rd	Nate Jacobson	Community Advanced	Community
Walgreens Co. - Issaquah, WA	Daniel Hahm	Community Advanced	Community
Walgreens Co. - Jackson, WI	Pharmacy Manager Dave Grandinetti, Dipti Patel	Rural	Community Rural
Walgreens Co. - Kalispell, MT	Randal Jensen	Community Advanced	Community
Walgreens Co. - Kansas City, MO - 2301 Holmes St.	Chad Cadwell	Community Advanced	Community
Walgreens Co. - Kettering, OH - 2140 Dorothy Ln	Bradley Schaefer	Community Advanced	Community
Walgreens Co. - Lakeville, MN - 7560 160th St. W - Vaccination	Trudy Matthys	Special Projects	Elective
Walgreens Co. - Lakeville, MN - 7560 160th St. W	Trudy Matthys	Community Advanced, PHRM 455 Introductory Pharmacy Practice	Community
Walgreens Co. - Lehi, UT - 102 N 1200 E	Skip Johnson	Community Advanced	Community
Walgreens Co. - Little Falls, MN	Nicole Ebnert	Community Advanced, PHRM 455 Introductory Pharmacy Practice	Community
Walgreens Co. - Loveland, CO - 3690 N Garfield Ave.	Amber Crawford, Vince Skorey	Community Advanced	Community
Walgreens Co. - Loxahatchee, FL	Paul Delisser	Community Advanced	Community
Walgreens Co. - Mankato, MN - 1270 E Madison Ave	Sandra Eineke, Renae Homich	PHRM 455 Introductory Pharmacy Practice Experience II	Community
Walgreens Co. - Maple Grove - 16750 County Road 30 - Store 1479	Tamera Haase	Community Advanced, PHRM 455 Introductory Pharmacy Practice	Community
Walgreens Co. - Maricopa, AZ - 21274 North John Wayne Parkway	Ron Kassee	Community Advanced	Community
Walgreens Co. - McMinnville, OR	Sean Fitzpatrick	Community Advanced	Community
Walgreens Co. - Mesa, AZ - 1142 W Guadalupe Rd	Mohammad Abdelhaq	Community Advanced	Community
Walgreens Co. - Mesa, AZ - 3624 North Power Road	Tia Clark	Community Advanced	Community
Walgreens Co. - Mesa, AZ - 9233 E Guadalupe Rd	Peter Nielson	Community Advanced	Community
Walgreens Co. - Middleton, WI	Pharmacy Manager Carolyn Starr	Community Advanced	Community
Walgreens Co. - Milwaukee, WI - 1400 E. Brady St.	Dan Moore, Tim Regan	Community Advanced	Community
Walgreens Co. - Milwaukee, WI - 275 W Wisconsin Ave	Mike Schwartz	Community Advanced	Community
Walgreens Co. - Minneapolis, MN - #11916 - HIV Clinic	Pharmacy Manager Charles Howald, Michael Low, Daniel Mille	Ambulatory Care, Community Advanced	Ambulatory Care
Walgreens Co. - Minneapolis, MN - 5415 Lyndale Ave S.	Tim Affeldt	Community Advanced, PHRM 455 Introductory Pharmacy Practice	Community
Walgreens Co. - Minneapolis, MN - Hiawatha Ave	Josh Van Veldhuizen	Management, PHRM 451L Introductory Pharmacy Practice Exper	Community
Walgreens Co. - Minneapolis, MN - Management - 2100 Lyndale Ave S	Josh Van Veldhuizen	Management	Elective
Walgreens Co. - Minneapolis, MN - Nicollet Mall	Lorie Reed	PHRM 451L Introductory Pharmacy Practice Experience II, PHRM 4	Community

Walgreens Co. - Moorhead, MN - 30th Ave	Pharmacy Manager Justin Richard, Sarah Rustad	Community Advanced, PHRM 455 Introductory Pharmacy Practice	Community
Walgreens Co. - Moorhead, MN - Main Ave	Sarah Peterson, Amanda Schauer	Community Advanced, PHRM 451L Introductory Pharmacy Practice	Community
Walgreens Co. - Nashville, TN	Julie Hadden	Community Advanced	Community
Walgreens Co. - New Hope, MN	Michelle Lemke	Community Advanced	Community
Walgreens Co. - Newton, KS	Anne Geidel	Community Advanced	Community
Walgreens Co. - North Port, FL	Maria Montalbano	Community Advanced	Community
Walgreens Co. - Oakdale, MN - 985 Geneva Ave N	Dorothy Ig-Izevbekhai	Community Advanced	Community
Walgreens Co. - Park Rapids, MN	Pharmacy Manager Sarah Rowe	PHRM 451L Introductory Pharmacy Practice Experience II, PHRM 4	Rural
Walgreens Co. - Parker, CO - 19028 Lincoln Ave	Holly Tancar	Community Advanced	Community
Walgreens Co. - Parma, OH	John Petit	Community Advanced	Community
Walgreens Co. - Port Charlotte, FL	Chris Conetta	Community Advanced	Community
Walgreens Co. - Portage, MI	Pharmacy Manager Holly MacEwen	Community Advanced	Community
Walgreens Co. - Portland, OR - 2103 W Burnside	Dana Amunategui	Community Advanced	Community
Walgreens Co. - Renton, WA - 4105 NE 4th St.	Peter Le	Community Advanced	Community
Walgreens Co. - Roseville, MN - Ambulatory Care	Michelle Aytay	Ambulatory Care	Ambulatory Care
Walgreens Co. - Roseville, MN - Management - Affeldt	Michelle Aytay, Manager Camille Kundel, Chad Nellis	Management	Elective
Walgreens Co. - Roseville, MN - Management - Amb Care - Shaft	Grant Shaft	Ambulatory Care	Ambulatory Care
Walgreens Co. - Roseville, MN - Management - Kundel	Manager Camille Kundel	Management	Elective
Walgreens Co. - Roseville, MN - Management - Thuan Do	Thuan Do	Management	Elective
Walgreens Co. - San Antonio, TX - 4351 Thousand Oakes Dr	Tom Barnhart	Community Advanced	Community
Walgreens Co. - Sandwich, IL	Patrick Markley	Community Advanced	Community
Walgreens Co. - Sioux Falls, SD 1720 S Sycamore Ave	Casey Lesnar	Community Advanced	Community
Walgreens Co. - Sioux Falls, SD 1806 S. Minnesota Ave	Matt Toennies	PHRM 451L Introductory Pharmacy Practice Experience II, PHRM 4	Community
Walgreens Co. - Sioux Falls, SD 3620 W. 41st St.	Nicole Welch	Community Advanced	Community
Walgreens Co. - South Bend, IN - 1351 N. Ironwood Dr.	Jason Burghdud	Community Advanced	Community
Walgreens Co. - South Tucson, AZ - #3377	Ryan Hansen, Matthew Joachim	Community Advanced	Community
Walgreens Co. - St. Cloud, MN - 2505 West Division St.	Aaron Brummer, Jason Lind	Community Advanced, PHRM 455 Introductory Pharmacy Practice	Community
Walgreens Co. - St. Cloud, MN - 251 County Road 120	Rebecca Pickler	Community Advanced	Community Elective
Walgreens Co. - St. Paul, MN - 1585 Randolph Ave. - Vaccination	Kristyn Hamm	Special Projects	Elective
Walgreens Co. - St. Paul, MN - 1585 Randolph Ave.	Kristyn Hamm	Community Advanced, PHRM 455 Introductory Pharmacy Practice	Community
Walgreens Co. - St. Paul, MN - 1788 Old Hudson Rd	Kevin Olander	Community Advanced	Community
Walgreens Co. - St. Paul, MN - 2099 Ford Pkwy.	Katie Neudahl	Community Advanced	Community
Walgreens Co. - Urbana, IL	Nikki Montague	Community Advanced, Compounding	Community
Walgreens Co. - Virginia Beach, VA - 645 First Colonial Rd	Alyssa Lapaglia	Community Advanced	Community
Walgreens Co. - Warrensburg, MO - 621 N Maguire St.	Kristina Houk	Community Advanced	Community
Walgreens Co. - Waterloo, IA - 111 W Ridgeway Ave	Jamie Oltmann	Community Advanced	Community
Walgreens Co. - Weslaco, TX - 1701 W Business 83	Rodrigo Rodriguez	Community Advanced	Community
Walgreens Co. - Westminster, CO - 7211 Federal Blvd	Aaron Barcelo	Community Advanced	Community
Walgreens Co. - Westmont, IL - 8 West 63rd St.	Wai Lau	Community Advanced	Community
Walgreens Co. - White Bear Lake, MN	Jolene Gores	Community Advanced, PHRM 451L Introductory Pharmacy Practice	Community

Walgreens Co. - Willmar, MN - 1301 1st St. SW	Jane Loueng	Community Advanced	Community
Walgreens Co. - Windsor, CO - 1480 Main St.	Frederick Spooner	Community Advanced	Community
Walgreens Co. - Woodbury, MN - 1615 Queens Dr.	Dana Carlton	Community Advanced	Community
Walgreens Co. - Woodbury, MN	Greg Shillings	PHRM 451L Introductory Pharmacy Practice Experience II, PHRM 4	Community
Walgreens Co. - Woodland Park, CO - 140 Paradise Circle	Cary Burmeister	Community Advanced	Community
Wall's Health Mart Compounding Pharmacy - Grand Forks, ND	Kelly Hart, Kirby Mohl	Compounding	Elective
Wall's Medicine Center - Grand Forks, ND	Dennis Johnson, Ross Nygaard, Cody Varnson	Community Advanced, PHRM 451L Introductory Pharmacy Practic	Community
Walmart - Prairie Pharmacy - Fargo, ND	Bruce Herold	PHRM 451L Introductory Pharmacy Practice Experience II, PHRM 4	Community
Walmart Pharmacy - Alexandria, MN	Bradley Meichsner	Community Advanced, PHRM 451L Introductory Pharmacy Practic	Community
Walmart Pharmacy - Andover, MN - 1851 Bunker Lake Blvd	Jess Brown	Community Advanced, PHRM 455 Introductory Pharmacy Practic	Community
Walmart Pharmacy - Bloomington, MN	Nathan Tiedtke	Community Advanced	Community
Walmart Pharmacy - Burnsville, MN	Michele Nicholson	Community Advanced, PHRM 455 Introductory Pharmacy Practic	Community
Walmart Pharmacy - Caldwell, TX - 475 State Highway 36 N	Megan Wynn-Yazzie	Rural	Rural
Walmart Pharmacy - Chippewa Falls, WI	Jake Morris	Community Advanced	Community
Walmart Pharmacy - Cloquet, MN	Kelly Giron	Community Advanced, PHRM 455 Introductory Pharmacy Practic	Community
Walmart Pharmacy - Detroit Lakes, MN	Darren Mack, Kristy Osterman	Community Advanced, PHRM 451L Introductory Pharmacy Practic	Community
Walmart Pharmacy - Dilworth, MN	Shawna Deminck, Lance LeClair	Community Advanced, PHRM 451L Introductory Pharmacy Practic	Community
Walmart Pharmacy - Fergus Falls, MN	Blaine Ecker, Scott Ward	Community Advanced, PHRM 451L Introductory Pharmacy Practic	Community
Walmart Pharmacy - Greeley, CO	Pharmacy Manager Denise Vye-Gordon	Community Advanced	Community
Walmart Pharmacy - Hays, KS	Doug Hedge	Community Advanced	Community
Walmart Pharmacy - Joplin, MO	Chris Brown	Community Advanced	Community
Walmart Pharmacy - Little Falls, MN	Lisa Johnson	Community Advanced, PHRM 455 Introductory Pharmacy Practic	Community
Walmart Pharmacy - Menomonie, WI - 180 Cedar Falls Rd	Heidi Swartz	Community Advanced	Community
Walmart Pharmacy - Milwaukie, OR - 15600 SE McLoughlin Blvd	Aimee Quesnel	Community Advanced	Community
Walmart Pharmacy - Monticello, MN - 9320 Cedar St.	Evan Krebs, Pharmacy Manager Linnae Norberg	Community Advanced, PHRM 455 Introductory Pharmacy Practic	Community
Walmart Pharmacy - Silsbee, TX - 1100 U.S. 96	Donnie Baker	Rural	Rural
Walmart Pharmacy - Spokane, WA - 15727 E Broadway	Jared Twiggs	Community Advanced	Community
Walmart Pharmacy - St. Cloud, MN - 3601 2nd St.	Davis Gabrielson	Community Advanced	Community
Walmart Pharmacy - Westminster, CO	Wesley Hopkins	Community Advanced	Community
Walter Reed National Military Medical Center - Bethesda, MD - Ambulatory Care - Anticoagulation	Nana Safo	Ambulatory Care, Anticoagulation	Elective Ambulatory Care
Walter Reed National Military Medical Center - Bethesda, MD - Institutional	Giao Phung	Institutional, PHRM 352L Introductory Pharmacy Practice Experie	Institutional
Warren Pharmacy - Warren, MN	Vernon Borowicz	PHRM 451L Introductory Pharmacy Practice Experience II, PHRM 4	Rural
Washington DC/Heitkamp	Asst to the Chief of Staff Bryce Hample	Health Care Policy	Elective
Washington DC/Klobuchar	Health Legislative Assistant Andrew Hu	Health Care Policy	Elective
Watertown Pharmacy - Watertown, MN - 204 Lewis Ave. S	Michelle Luebke, Rose Rosdahl	Rural	Rural
Weber & Judd Pine Island Pharmacy - Pine Island, MN	Patrick McDonough	PHRM 451L Introductory Pharmacy Practice Experience II, PHRM 4	Rural
West River Regional Medical Center - Hettinger, ND	Mitch Schultz	Institutional, PHRM 355 Introductory Pharmacy Practice Experien	Institutional
Westfields Hospital & Clinic - New Richmond, WI - 535 Hospital Rd	Emily Neumann, Nicole Trosen	Acute Care, Community Advanced, Institutional, PHRM 355 Introd	Institutional Acute Care
Whittier Clinic Pharmacy (HCMC)-Minneapolis, MN	Pharmacy Manager Stacy Ferderer, Mark Holtan	Ambulatory Care, Community Advanced	Community Ambulatory Care

Winona Health - Winona, MN	Drew Bilicki	Institutional, PHRM 352L Introductory Pharmacy Practice Experie	Institutional
Wishek Drug - Wishek, ND	Carla Aipperspach	PHRM 451L Introductory Pharmacy Practice Experience II, PHRM 4	Rural
Ye Olde Med Ctr - Park River, ND	Laurie Larson, Kara Ruhland, Cincinal Pharmacist Faith Wentzel	PHRM 451L Introductory Pharmacy Practice Experience II, PHRM 4	Ambulatory Care
Yellow River Pharmacy - Webster, WI	Pharmacy Manager Erica Paffel	PHRM 455 Introductory Pharmacy Practice Experience II, Rural	Rural