

NDSU NORTH DAKOTA
STATE UNIVERSITY

Bison Bridge

STUDENT FOCUSED • LAND GRANT • RESEARCH UNIVERSITY

What is Bison Bridge 2023?

BISON **BRIDGE**

- Program dedicated to assisting local first-year multicultural students, who are first-generation or Pell-eligible get connected to campus and start their college career
- August 15, 16, & 17: three-day experience with ongoing mentorship for one year
- Funded for **50 participants** attending NDSU in fall 2023
- \$1,000 stipend for participants

IMPACT - Participants



- Get set up for academic success
- Meet professors, staff and academic advisors
- Gain leadership and self-advocacy skills
- Engage with a diverse population of new NDSU students and build friendships before classes begin
- Learn about NDSU services and resources

IMPACT - Participants

BISON BRIDGE

*“My first and most **consistent friends** at NDSU was through the Bison Bridge. I’m thankful I had the opportunity to be a part of that program because when it ended we saw many students who didn’t have the **connections** we had. I’m thankful because it helped me **get to know campus**, with other people who looked like me.”*

Fred Edwards, BS 2018; MS 2021

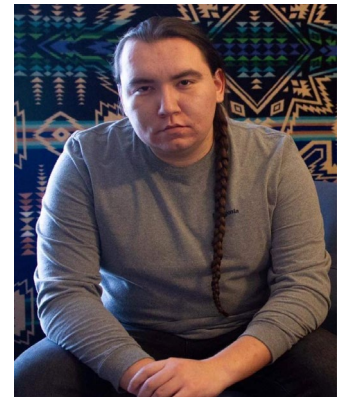


IMPACT - Participants

BISON BRIDGE

*“Bison Bridge immensely **helped my college experience**, both as a participant and a student mentor. When I took part in the program as an incoming freshman, it not only allowed me to **learn about resources available to me** on campus, but I was also able to **find a community** of people going through a similar experience to myself. There was a **support system** that naturally formed among ourselves.”*

Tyrel Iron Eyes, BS 2019; MS in progress



IMPACT - Participants

BISON BRIDGE

*“It was hard to commit to a PWI without knowing for sure if there would be any **support** for me at the institution. When we got notice of the Bison Bridge program, my family and I felt immensely more **comfortable** with me attending NDSU. **We found comfort** in the fact that this school had plans to take care of their students of color and could acknowledge that students of color needed **time to adjust, resources and community** as they adapted to college at a PWI.”*

Kayla Jones, BS 2022; MS in progress



BISON BRIDGE



GO BISON!

STUDENT FOCUSED • LAND GRANT • RESEARCH UNIVERSITY **NDSU**

IMPACT - Recruitment, Retention & DEI

BISON **BRIDGE**

- A useful tool to support Admission's recruitment strategies
- Reiterates NDSU's Message, "You Belong Here"
- Provides a sense of community
- Eases transition from high school to college
- Motivates, encourages and empowers students

IMPACT - Recruitment, Retention & DEI

BISON **BRIDGE**

College enrollment after high school:

ND 70%

MN 72%

College enrollment for target population:

Fargo, Moorhead, West Fargo: 42%

IMPACT - Recruitment, Retention & DEI

BISON **BRIDGE**

Making a positive impact through

- Collaborative programming and activities
- Continued mentoring & support
- Informed by co-curricular learning goals

Exploring Guiding **Values** of Self and Others

My why of being an NDSU student, **what motivates me when I face challenges**

BISON  **BRIDGE**

Exploring Guiding **Values** of Self and Others

My why of being an NDSU student, **what motivates me when I face challenges**

Identifying **Strengths**

The **strengths I have and can use** as a student at NDSU

BISON  **BRIDGE**

Resources

Learning about the **resources and people that can help me succeed** at NDSU

Exploring Guiding **Values** of Self and Others

My why of being an NDSU student, **what motivates me when I face challenges**

Identifying Strengths

The strengths I have and can use as a student at NDSU

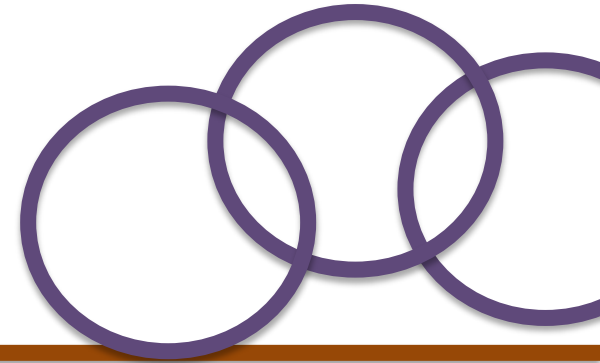
BISON  **BRIDGE**

Resources

Learning about the resources and people that can help me succeed at NDSU

Connections

Creating connections with peers and NDSU staff.
I belong and matter and NDSU



Exploring Guiding **Values** of Self and Others

My why of being an NDSU student, **what motivates me when I face challenges**

Identifying Strengths

The strengths I have and can use as a student at NDSU



- Weekly meetings with a peer mentor
- Academic and wellbeing skills
- Goal and action-step building
- Connection with resources

BISON BRIDGE



Siham Amedy

Inclusive Recruitment and Engagement Specialist

Email: siham.amedy.2@ndsu.edu



Kaelen Napoleon

Diversity and Inclusion Program Coordinator

Email: kaelen.napoleon@ndsu.edu



Michelle Pearson

Assistant Director Learning Services

Email: michelle.pearson@ndsu.edu

NDSU NORTH DAKOTA
STATE UNIVERSITY

New Academic Programs

STUDENT FOCUSED • LAND GRANT • RESEARCH UNIVERSITY

Current Online Portfolio

Undergraduate

Economics

Business Administration

Human Development & Family Science

Marketing

Graduate

Construction Management

Agricultural Education

Education

Extension Education

Family & Consumer Science

Music

Supply Chain Management

Natural Resources Management

Public Health

Public Health in Epidemiology

Public Policy

Biomedical Engineering

Health, Nutrition & Exercise Science

Transportation & Urban Systems

Software Engineering

Certifications

Undergraduate

Aging Studies

Entrepreneurship

Family Financial Planning

Economic Computation

Graduate

Computer Science Education

Big Data Stat Analysis

Leadership & Management Skills

Public Health

Supply Chain Management

Transportation & Urban Systems

Cybersecurity

Digital Market & Innovation

Construction Management

Organization Change Management

Student Affairs Administration

Software Engineering

Phase I Goals

1. To increase completions for all types of students
2. To increase enrollment at NDSU
3. To meet the workforce needs of North Dakota

Phase I Programs

- Programs launching in Phase I
 - Professional MBA
 - Electrical Engineering
 - Computer Engineering
 - Software Engineering
 - Cybersecurity
 - University Studies
- General Education and outside department support needs

Online Defined

- What does *online program* mean?
 - Education that uses one or more technologies to **deliver instruction to students who are separated from the instructor or instructors** and to support **regular and substantive interaction** between the students and the instructor or instructors, either synchronously or asynchronously.

Phase II 2023-2024

- Additional programs to expand/transition online
- Stackable credentials for Master's degrees
- Workforce related job skills

Early Entry

NDSU

OFFICE OF TEACHING AND LEARNING

STUDENT FOCUSED • LAND GRANT • RESEARCH UNIVERSITY **NDSU**

Early Entry Pathways

- Beneficial for NDSU and high school students
- NDSU classes taught by NDSU instructors
- Opportunity to recruit students
- Introduce the students to NDSU, a department, and major
- Credit hour production

Best-Fit Early Entry Classes

- Accessible (online, asynchronous)
- Fulfill general education requirements
- Introduce a degree and build curiosity
- Provide challenge
- Interactive and engaging
- Feature high quality teaching
- Build connections between instructors and students

Early Entry Pathways

Questions and Support

Stacy.Duffield@ndsu.edu

NDSU NORTH DAKOTA
STATE UNIVERSITY

Reinvestment in Academic Advising

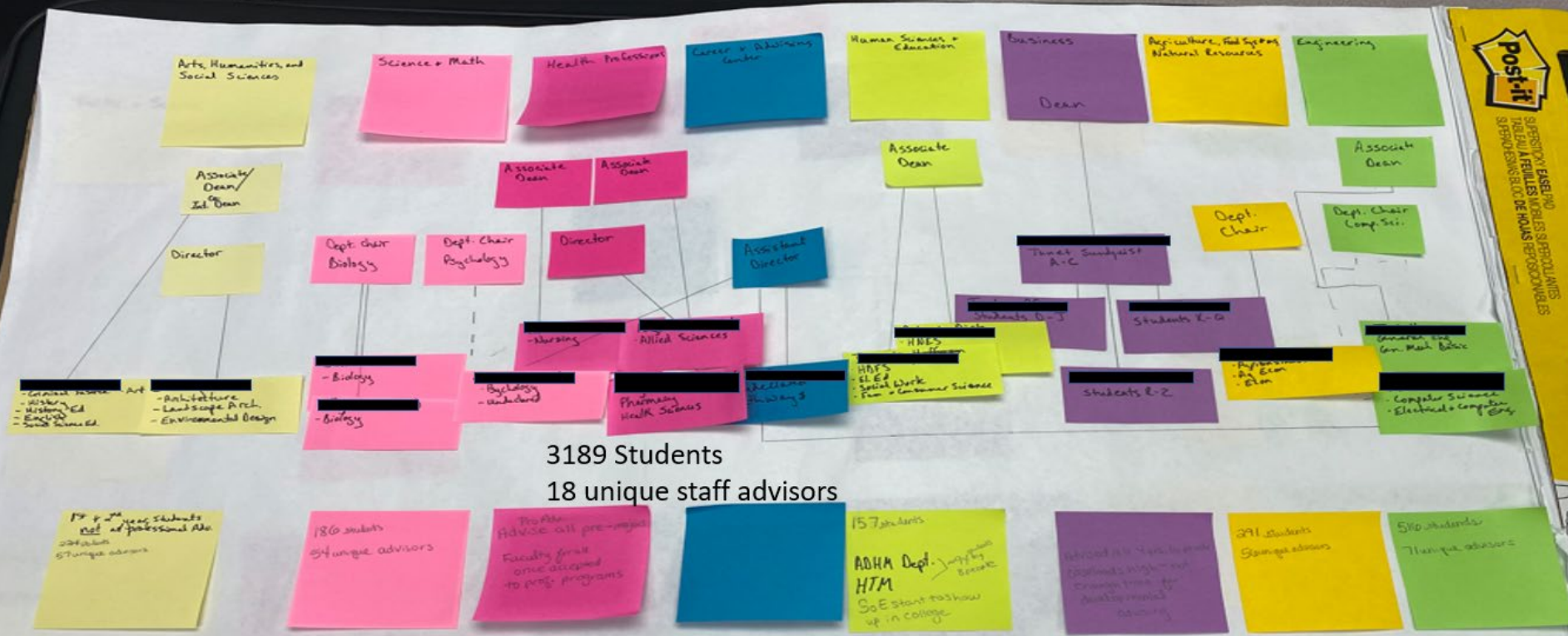
STUDENT FOCUSED • LAND GRANT • RESEARCH UNIVERSITY

Goal: Professional Academic Advising for all* 1st and 2nd year students.

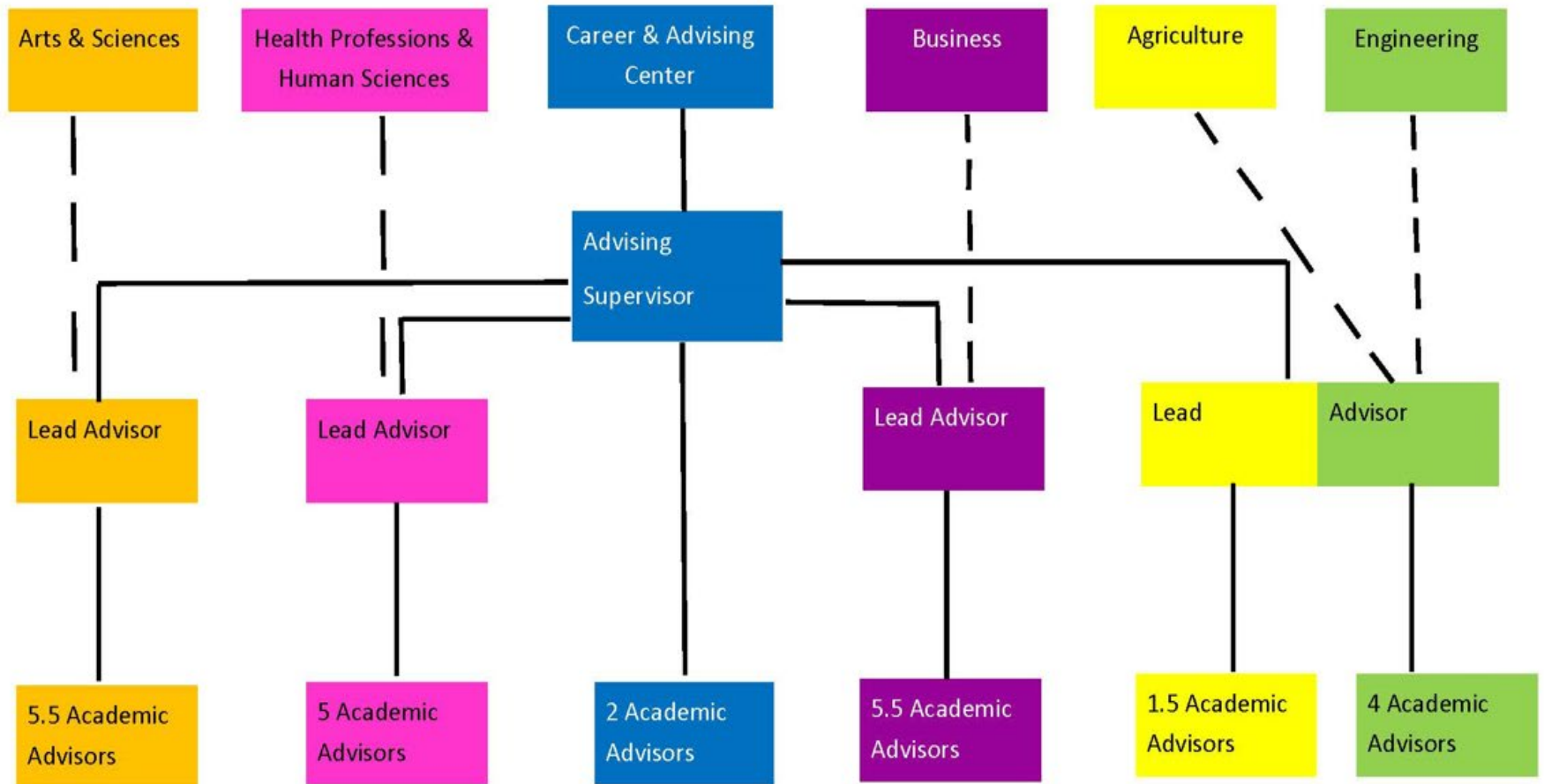
- Developmental Advising Model
- Maximum caseloads of 250-275 per professional advisor

*Modifications to when a student transitions to a faculty advisor may fluctuate based on academic departments.

Current Structure



Academic Advising Structure



Opportunities

- **Students**
- **Faculty**
- **Academic Advisors**
- **Other Campus Entities**

Next Steps and Timeline

MARCH

- Meet with individual colleges to talk through specifics
 - Current people doing work, academic mergers, special circumstances
 - Office locations/space, etc.
- Post new positions
- Inquiry process for shifting areas

APRIL

Complete search processes

MAY-JULY

On-board new staff and train all staff



ANY
QUESTIONS