

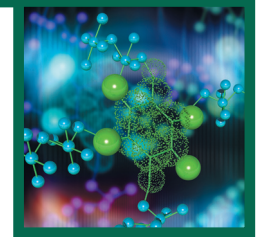
# NORTH DAKOTA STATE UNIVERSITY

FARGO, N.D.

---



NDSU



FY2013 • SPONSORED PROGRAMS ADMINISTRATION

## External Funding Awards Annual Report

## Introduction

Opportunity and achievement sum up NDSU's research enterprise from FY 2011 to FY 2013. Among our research highlights: discoveries in numerous areas of research, partnerships with the private sector, growth as a doctoral granting institution, burgeoning undergraduate research opportunities, and being notably named among the top 108 U.S. public and private universities in the Carnegie Commission on Higher Education's category of "Research Universities/Very High Research Activity". These achievements are possible through collaboration among all areas of NDSU. This report provides an abbreviated quantitative snapshot of FY2011, FY2012 and FY2013.

A report by Economic Modeling Specialists International shows that net added income generated by NDSU operations is equal to approximately \$201.2 million each year. Of this, \$74.8 million is due to NDSU's research activities alone.

### Breakdown of external awards and federal formula funds:

	<b>FY 2011</b>	<b>FY 2012</b>	<b>FY 2013</b>
External Awards	\$111,349,882	\$73,280,296	\$56,639,084
<i>Total External Awards</i>	<i>\$111,349,882</i>	<i>\$73,280,296</i>	<i>\$56,639,084</i>
Hatch/McIntire-Stennis Funds	\$3,130,504	\$3,146,164	\$3,069,726
Extension Service Smith-Lever Formula Funds	\$3,854,418	\$3,829,145	\$3,726,971
Student Financial Aid	\$12,948,855	\$11,730,325	\$11,575,941
<i>Total Federal Formula Funds</i>	<i>\$19,933,777</i>	<i>\$18,705,634</i>	<i>\$18,372,638</i>
<b>Grand Total</b>	<b>\$131,283,659</b>	<b>\$91,985,930</b>	<b>\$75,011,722</b>

Research success at NDSU is built upon the collective energy and commitment of faculty, students, staff and those who support our research activities. When ranked by non-medical R&D expenditures, the National Science Foundation (NSF) places NDSU as 94<sup>th</sup> among 655 U.S. research universities for FY2012. The NSF R&D survey also places NDSU in the top 100 R&D universities in agricultural sciences, chemistry, physical sciences, social sciences and psychology for FY 2012.

Efforts by faculty, students and staff create a remarkable record of achievement in research growth and discovery at NDSU. Ongoing efforts to adapt to a continually-changing national research landscape will fuel future success of NDSU as a student-focused, land grant, research institution of the 21<sup>st</sup> century.

## Table of Contents

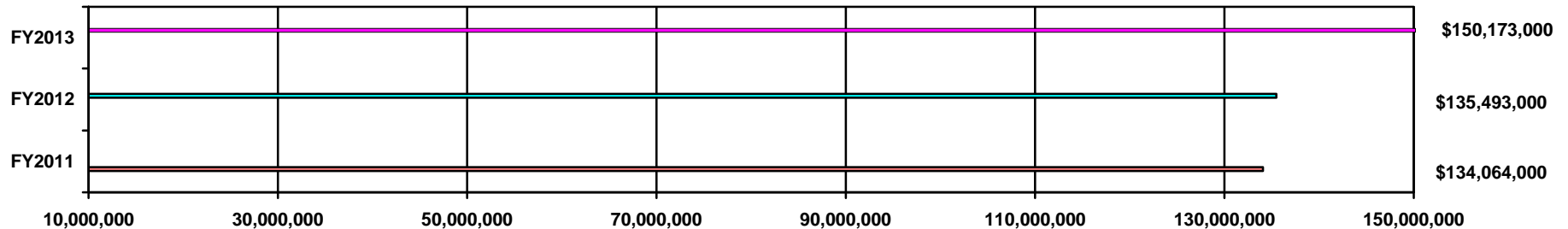
<b>Introduction.....</b>	<b>1</b>
<b>Table of Contents.....</b>	<b>2</b>
 <b>Summaries and Comparisons</b>	
NSF Higher Education Research and Development Survey: FY 2011 through FY 2013.....	3
Proposals Processed through Sponsored Programs and Total Dollars Requested from External Funding Sources: FY 2011 through FY 2013.....	4
Summary of External Awards listed by Lead PI's College/Unit: FY 2011 through FY 2013.....	5
Summary of External Awards by Source: FY 2011 through FY 2013.....	6

## NSF Higher Education Research and Development Survey (HERD)

Each year, the National Science Foundation requests data from universities and colleges on their respective fiscal year research and development expenditures. The survey is developed and conducted by the NSF Division of Science Resources Statistics (SRS) and fulfills the legislative mandate of the National Science Foundation Act to “provide a central clearinghouse for the collection, interpretation, and analysis of data on scientific and engineering resources”. The SRS develops and directs about 14 surveys and annually produces about 30 publications related to resources devoted to science, engineering, and technology. The surveys contribute to decisions affecting higher education, Congress, the executive branch, and education associations using institutional data.

The data represented below is generated from funding awarded to NDSU. Sources of funding include: Federal government, State and local government, industry, institution, and other sources such as non-profit foundations. Institutional funds include state appropriations, tuition and fees, and gifts expended for research and development activities. In addition, un-reimbursed indirect costs and cost sharing are included as part of the institutional data.

**NSF Higher Education Research and Development Survey: FY 2011 – FY 2013**



Field	FY 2011	FY 2012	FY 2013
Engineering	17,549,000	11,762,000	14,564,000
Physical Sciences	16,461,000	14,364,000	14,329,000
Environmental Sciences	565,000	194,000	675,000
Mathematical Sciences	212,000	132,000	945,000
Computer Sciences	2,820,000	2,620,000	3,996,000
Life Sciences	74,546,000	84,116,000	87,099,000
Psychology	2,894,000	3,261,000	4,040,000
Social Science	14,118,000	13,761,000	14,883,000
Other Sciences (Interdisciplinary)	3,529,000	3,664,000	3,539,000
Non-Science & Engineering	1,347,000	1,619,000	6,103,000
	<b>\$134,064,000</b>	<b>\$135,493,000</b>	<b>150,173,000</b>

**Proposals Processed through Sponsored Programs Administration  
and Total Dollars Requested from External Funding Sources  
FY 2011 - FY 2013**

College/Unit*	FY 2011		FY 2012		FY 2013	
	# Proposals	Requested	# Proposals	Requested	# Proposals	Requested
College of Agriculture, Food Systems and Natural Resources	2	\$234,020	6	\$1,358,261	11	\$1,222,738
Agriculture Experiment Station and Extension Service	622	\$106,388,343	595	\$85,983,180	631	\$66,663,981
College of Arts, Humanities and Social Sciences	18	\$925,435	22	\$1,175,319	45	\$5,799,629
College of Business	3	\$305,423	3	\$490,579	2	\$147,437
College of Engineering	117	\$22,794,660	107	\$35,908,919	119	\$24,887,713
College of Human Development and Education	26	\$3,265,986	29	\$3,321,576	33	\$8,757,363
College of Pharmacy, Nursing and Allied Sciences	6	\$30,137,114	85	\$37,821,899	85	\$62,548,999
College of Science and Mathematics	172	\$57,982,069	161	\$65,141,575	161	\$61,820,843
University Miscellaneous Offices	146	\$50,474,855	133	\$30,481,230	111	\$44,993,029
Upper Great Plains Transportation Institute	57	\$12,132,757	52	\$12,338,775	52	\$14,990,451
<b>TOTAL</b>	<b>1,231</b>	<b>\$284,640,662</b>	<b>1,193</b>	<b>\$274,021,313</b>	<b>1,250</b>	<b>\$291,832,183</b>

\*College/unit categories are determined by the principal investigator's department only; co-investigators' departments are not reflected.

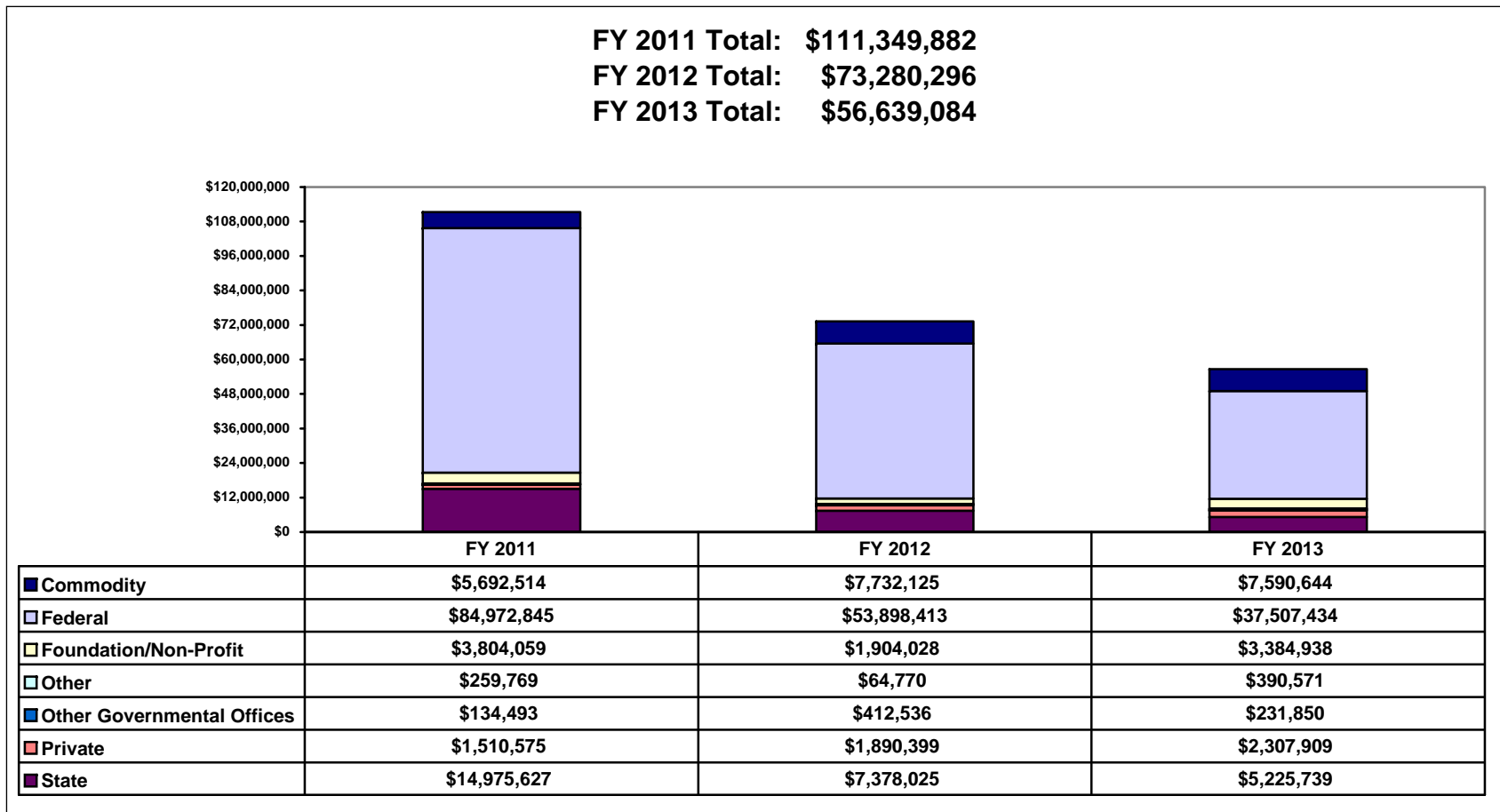
## Total Dollars Awarded from External Funding Sources FY 2011 - FY 2013

	FY 2011	FY 2012	FY 2013
College/Unit*	Awarded	Awarded	Awarded
College of Agriculture, Food Systems & Natural Resources	\$169,000	\$100,000	\$180,000
Agriculture Experiment Station & Extension Service	\$23,963,211	\$22,912,320	\$22,968,491
College of Arts, Humanities & Social Sciences	\$253,968	\$470,954	\$592,812
College of Business	\$0	\$2,000	\$0
College of Engineering	\$1,867,546	\$2,428,795	\$1,966,240
College of Human Development & Education	\$1,548,081	\$1,392,185	\$2,203,554
College of Pharmacy, Nursing & Allied Sciences	\$2,357,707	\$4,444,316	\$3,242,128
College of Science & Mathematics	\$14,432,671	\$9,690,736	\$9,051,545
University Miscellaneous Offices	\$58,546,461	\$20,512,978	\$8,221,401
Upper Great Plains Transportation Institute	\$8,211,237	\$11,326,012	\$8,212,913
<b>TOTAL</b>	<b>\$111,349,882</b>	<b>\$73,280,296</b>	<b>\$56,639,084</b>

\*College/unit categories are determined by the principal investigator's department only; co-investigators' departments are not reflected.

## Summary of External Awards by Source\*

### FY 2011 - FY 2013



\*Federal formula funds and state appropriated dollars are not included.