

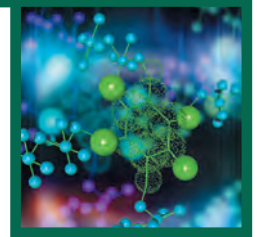
# NORTH DAKOTA STATE UNIVERSITY

FARGO, N.D.

---



NDSU



FY2014 • SPONSORED PROGRAMS ADMINISTRATION

## External Funding Awards Annual Report

## Introduction

An interconnected and collaborative approach to research and creative activity plays an integral role in NDSU's mission to serve the citizens of North Dakota. NDSU's research and creative activity enterprise enhances student learning, generates knowledge and discovery, and contributes to sustained economic growth in the region.

We are building a strong web of partners and an interconnected pipeline of human assets. NDSU faculty provide a pivotal role in creating that pipeline. They continue to receive accolades for achievements in teaching, research, and creative activity. These achievements are possible through collaboration among all areas of NDSU. This report provides an abbreviated quantitative snapshot of FY2012, FY2013 and FY2014, illustrating information about some of these successes. Additional information about FY14 research and creative activity is also found at [www.ndsu.edu/research/reports](http://www.ndsu.edu/research/reports).

### Breakdown of external awards and federal formula funds:

|   | FY 2012             | FY 2013             | FY 2014             |
|---|---------------------|---------------------|---------------------|
| External Awards                             | \$73,280,296        | \$56,510,038        | \$64,011,594        |
| <i>Total External Awards</i>                | \$73,280,296        | *\$56,510,038       | \$64,011,594        |
| Hatch/McIntire-Stennis Funds                | \$3,146,164         | \$3,069,726         | \$3,223,580         |
| Extension Service Smith-Lever Formula Funds | \$3,829,145         | \$3,726,971         | \$3,906,862         |
| Student Financial Aid                       | \$11,730,325        | \$11,575,941        | \$14,949,299        |
| <i>Total Federal Formula Funds</i>          | \$18,705,634        | \$18,372,638        | \$22,079,741        |
| <b>Grand Total</b>                          | <b>\$91,985,930</b> | <b>\$74,882,676</b> | <b>\$86,091,335</b> |

There are new partnerships underway and world-class opportunities for undergraduate, graduate, faculty and staff researchers and those engaged in creative pursuits. A new export controls function and emphasis on corporate/foundation research relations provide additional tools for researchers. With well over \$100 million in research expenditures annually reported to the National Science Foundation's survey of Higher Education R&D, NDSU's research intensity frequently places it in lists of top 100 research universities. NDSU is the only North Dakota university listed among the top 108 U.S. public and private universities in the Carnegie Commission on Higher Education's category of "Research Universities/Very High Research Activity."

Efforts by faculty, students and staff create a remarkable record of achievement in research growth and creative activity at NDSU. Ongoing efforts to adapt to a continually-changing national research landscape will fuel future success of NDSU as a student-focused, land grant, research institution of the 21<sup>st</sup> century.

*\*An adjustment was made to the previously published FY 2013 External Awards total. The adjusted award total is included here.*

# Table of Contents

**Introduction**..... 1

**Table of Contents**..... 2

**Summaries and Comparisons**

    NSF Higher Education Research and Development Survey: FY 2012 through FY 2014..... 3

    Proposals Processed through Sponsored Programs and Total Dollars Requested from External Funding Sources: FY 2012 through FY 2014..... 4

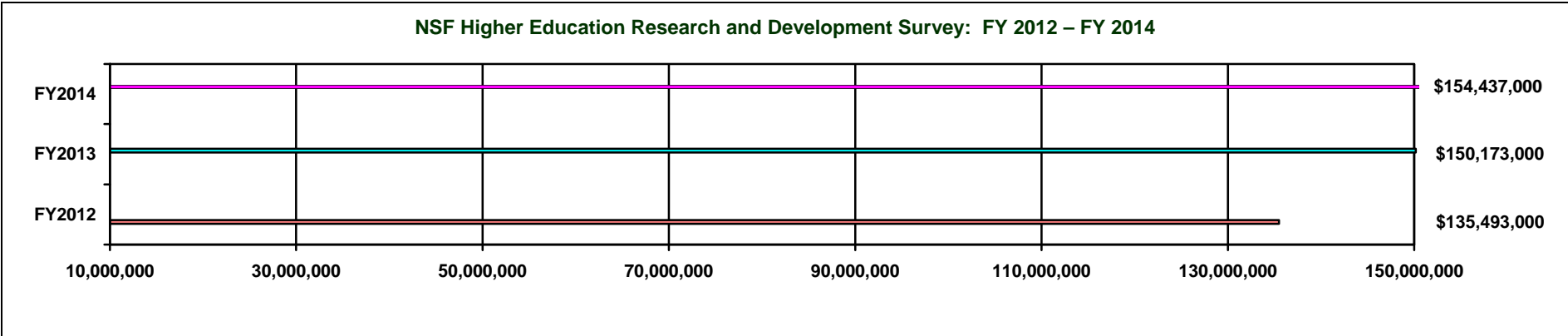
    Summary of External Awards listed by Lead PI's College/Unit: FY 2012 through FY 2014..... 5

    Summary of External Awards by Source: FY 2012 through FY 2014..... 6

## NSF Higher Education Research and Development Survey (HERD)

Each year, the National Science Foundation requests data from universities and colleges on their respective fiscal year research and development expenditures. The survey is developed and conducted by the NSF Division of Science Resources Statistics (SRS) and fulfills the legislative mandate of the National Science Foundation Act to “provide a central clearinghouse for the collection, interpretation, and analysis of data on scientific and engineering resources”. The SRS develops and directs about 14 surveys and annually produces about 30 publications related to resources devoted to science, engineering, and technology. The surveys contribute to decisions affecting higher education, Congress, the executive branch, and education associations using institutional data.

The data represented below is generated from funding awarded to NDSU. Sources of funding include: Federal government, State and local government, industry, institution, and other sources such as non-profit foundations. Institutional funds include state appropriations, tuition and fees, and gifts expended for research and development activities. In addition, un-reimbursed indirect costs and cost sharing are included as part of the institutional data.



| Field                              | FY 2012              | FY 2013            | FY 2014            |
|------------------------------------|----------------------|--------------------|--------------------|
| Engineering                        | 11,762,000           | 14,564,000         | 12,114,000         |
| Physical Sciences                  | 14,364,000           | 14,329,000         | 11,551,000         |
| Environmental Sciences             | 194,000              | 675,000            | 541,000            |
| Mathematical Sciences              | 132,000              | 945,000            | 741,000            |
| Computer Sciences                  | 2,620,000            | 3,996,000          | 5,106,000          |
| Life Sciences                      | 84,116,000           | 87,099,000         | 94,302,000         |
| Psychology                         | 3,261,000            | 4,040,000          | 3,697,000          |
| Social Science                     | 13,761,000           | 14,883,000         | 15,425,000         |
| Other Sciences (Interdisciplinary) | 3,664,000            | 3,539,000          | 4,875,000          |
| Non-Science & Engineering          | 1,619,000            | 6,103,000          | 6,085,000          |
|                                    | <b>\$135,493,000</b> | <b>150,173,000</b> | <b>154,437,000</b> |

**Proposals Processed through Sponsored Programs Administration  
and Total Dollars Requested from External Funding Sources  
FY 2012 - FY 2014**

| College/Unit*  | FY 2012      |                      | FY 2013      |                      | FY 2014     |                      |
|--|--------------|----------------------|--------------|----------------------|-------------|----------------------|
|  | # Proposals  | Requested            | # Proposals  | Requested            | # Proposals | Requested            |
| College of Agriculture, Food Systems and Natural Resources | 6            | \$1,358,261          | 11           | \$1,222,738          | 26          | \$1,887,583          |
| Agriculture Experiment Station and Extension Service       | 595          | \$85,983,180         | 631          | \$66,663,981         | 723         | \$67,791,645         |
| College of Arts, Humanities and Social Sciences            | 22           | \$1,175,319          | 45           | \$5,799,629          | 39          | \$1,544,812          |
| College of Business  | 3            | \$490,579            | 2            | \$147,437            | 1           | \$14,443             |
| College of Engineering                                     | 107          | \$35,908,919         | 119          | \$24,887,713         | 124         | \$32,276,806         |
| College of Human Development and Education                 | 29           | \$3,321,576          | 33           | \$8,757,363          | 33          | \$1,895,568          |
| College of Pharmacy, Nursing and Allied Sciences           | 85           | \$37,821,899         | 85           | \$62,548,999         | 80          | \$41,645,507         |
| College of Science and Mathematics                         | 161          | \$65,141,575         | 161          | \$61,820,843         | 177         | \$81,681,277         |
| University Miscellaneous Offices                           | 133          | \$30,481,230         | 111          | \$44,993,029         | 120         | \$37,324,544         |
| Upper Great Plains Transportation Institute                | 52           | \$12,338,775         | 52           | \$14,990,451         | 52          | 11,839,849           |
| <b>TOTAL</b>   | <b>1,193</b> | <b>\$274,021,313</b> | <b>1,250</b> | <b>\$291,832,183</b> | <b>1375</b> | <b>\$277,902,034</b> |

\*College/unit categories are determined by the principal investigator's department only; co-investigators' departments are not reflected.

## Total Dollars Awarded from External Funding Sources FY 2012 - FY 2014

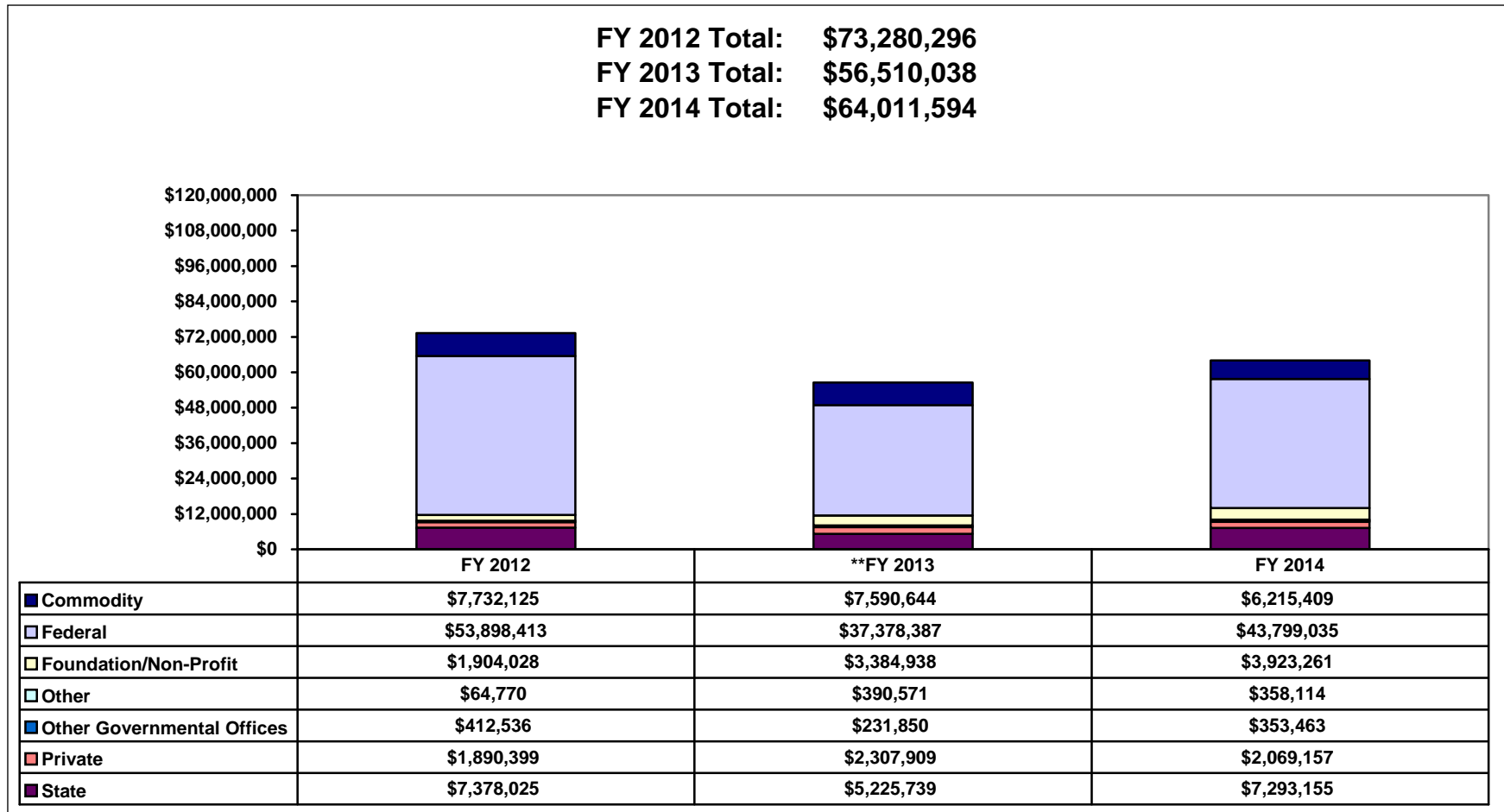
|  | FY 2012             | FY 2013               | FY 2014             |
|--|---------------------|-----------------------|---------------------|
| College/Unit*  | Awarded             | Awarded               | Awarded             |
| College of Agriculture, Food Systems & Natural Resources | \$100,000           | \$180,000             | \$559,126           |
| Agriculture Experiment Station & Extension Service       | \$22,912,320        | \$22,968,491          | \$19,916,393        |
| College of Arts, Humanities & Social Sciences            | \$470,954           | \$592,812             | \$803,113           |
| College of Business                                      | \$2,000             | \$0                   | \$14,426            |
| College of Engineering                                   | \$2,428,795         | \$1,966,240           | \$1,076,236         |
| College of Human Development & Education                 | \$1,392,185         | \$2,203,554           | \$1,005,589         |
| College of Pharmacy, Nursing & Allied Sciences           | \$4,444,316         | \$3,113,082           | \$5,629,736         |
| College of Science & Mathematics                         | \$9,690,736         | \$9,051,545           | \$9,785,201         |
| University Miscellaneous Offices                         | \$20,512,978        | \$8,221,401           | \$13,708,588        |
| Upper Great Plains Transportation Institute              | \$11,326,012        | \$8,212,913           | \$11,513,186        |
| <b>TOTAL</b>   | <b>\$73,280,296</b> | <b>**\$56,510,038</b> | <b>\$64,011,594</b> |

\*College/unit categories are determined by the principal investigator's department only; co-investigators' departments are not reflected.

\*\*An adjustment was made to the previously published FY 2013 External Awards total. The adjusted award total is included here.

## Summary of External Awards by Source\*

### FY 2012 - FY 2014



\*Federal formula funds and state appropriated dollars are not included.

\*\*An adjustment was made to the previously published FY 2013 External Awards total. The adjusted award total is included here.