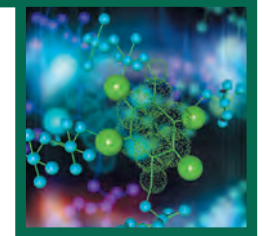


NORTH DAKOTA STATE UNIVERSITY

FARGO, N.D.



NDSU



FY2015 • SPONSORED PROGRAMS ADMINISTRATION

External Funding Awards Annual Report

Introduction

Faculty, students and staff at NDSU are engaged in research and scholarly activity that solves challenges and assists communities, individuals and businesses in reaching their goals. Many of these efforts receive global attention.

NDSU is building a foundation to engage in transformative research, where teams with a cross-section of expertise work together to solve grand challenges. The strategy emphasizes areas that build upon the strengths of the university, and provides additional opportunities to collaborate with businesses and institutions on projects and programs.

As a student-focused, land grant, research institution, NDSU conducts research that helps to solve greater challenges. We connect and collaborate with our external funding partners to create additional opportunities, while meeting and exceeding expectations to develop new approaches, technologies and products. NDSU research and creative activity is diverse, productive and thriving, and it holds much potential for further exploration and collaboration.

The university engages in extensive research activity and this report provides an abbreviated quantitative snapshot of FY2015. Additional information about the research achievements of faculty, staff and students can be found at www.ndsu.edu/research/reports.

Breakdown of external awards and federal formula funds:

| | FY 2013 | *FY 2014 | FY 2015 |
|---|---------------------|---------------------|---------------------|
| External Awards | \$56,510,038 | \$64,103,594 | \$65,493,673 |
| <i>Total External Awards</i> | <i>\$56,510,038</i> | <i>\$64,103,594</i> | <i>\$65,493,673</i> |
| Hatch/McIntire-Stennis Funds | \$3,069,726 | \$3,223,580 | \$3,184,546 |
| Extension Service Smith-Lever Formula Funds | \$3,726,971 | \$3,906,862 | \$3,920,040 |
| Student Financial Aid | \$11,575,941 | \$11,210,498 | \$11,021,451 |
| <i>Total Federal Formula Funds</i> | <i>\$18,372,638</i> | <i>\$18,340,940</i> | <i>\$18,126,037</i> |
| Grand Total | \$74,882,676 | \$82,444,534 | \$83,619,710 |

By the numbers, for FY2015, we noted a modest 2.2 percent increase in external funding over FY14, with growth in the areas of private, commodity, federal and other funding over the previous year. Estimated R&D expenditures reported to the National Science Foundation total \$153.5 million for NDSU in FY2015.

The achievements reflected in our award totals are possible through collaboration among all areas of NDSU. Faculty, students and staff exhibit sustained exemplary research and scholarly work, carrying out NDSU's mission as a student-focused, land grant, research university — poised for continued 21st century achievements.

*Adjustments were made to previously published FY 2014 data. The adjustments are included in this report.

Table of Contents

Introduction..... 1

Table of Contents..... 2

Summaries and Comparisons

 NSF Higher Education Research and Development Survey: FY 2013 through FY 2015..... 3

 Proposals Processed through Sponsored Programs and Total Dollars Requested from External Funding Sources: FY 2013 through FY 2015..... 4

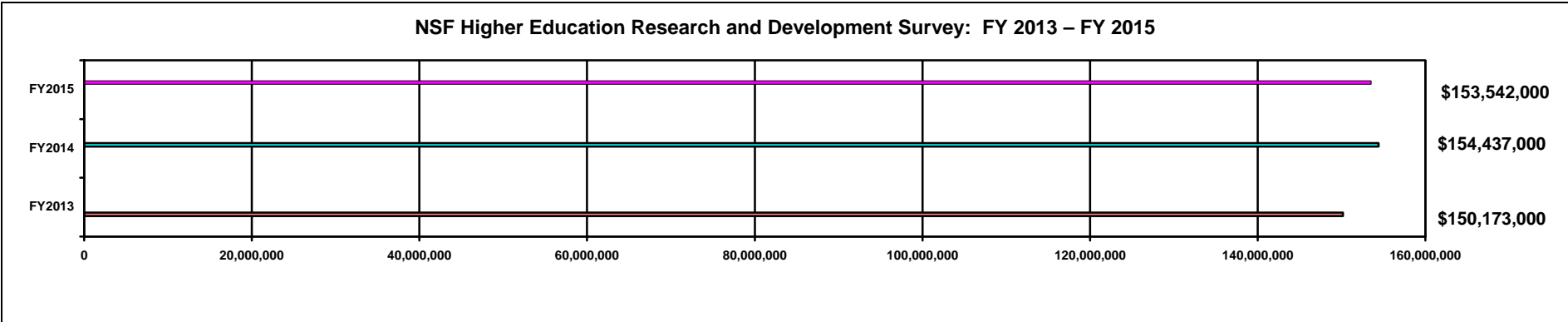
 Summary of External Awards listed by Lead PI's College/Unit: FY 2013 through FY 2015..... 5

 Summary of External Awards by Source: FY 2013 through FY 2015..... 6

NSF Higher Education Research and Development Survey (HERD)

Each year, the National Science Foundation requests data from universities and colleges on their respective fiscal year research and development expenditures. The survey is developed and conducted by the NSF Division of Science Resources Statistics (SRS) and fulfills the legislative mandate of the National Science Foundation Act to “provide a central clearinghouse for the collection, interpretation, and analysis of data on scientific and engineering resources”. The SRS develops and directs about 14 surveys and annually produces about 30 publications related to resources devoted to science, engineering, and technology. The surveys contribute to decisions affecting higher education, Congress, the executive branch, and education associations using institutional data.

The data represented below is generated from funding awarded to NDSU. Sources of funding include: Federal government, State and local government, industry, institution, and other sources such as non-profit foundations. Institutional funds include state appropriations, tuition and fees, and gifts expended for research and development activities. In addition, un-reimbursed indirect costs and cost sharing are included as part of the institutional data.



| Field | FY 2013 | FY 2014 | FY 2015 |
|------------------------------------|--------------------|--------------------|--------------------|
| Engineering | 14,564,000 | 12,114,000 | 12,679,000 |
| Physical Sciences | 14,329,000 | 11,551,000 | 10,951,000 |
| Environmental Sciences | 675,000 | 541,000 | 704,000 |
| Mathematical Sciences | 945,000 | 741,000 | 777,000 |
| Computer Sciences | 3,996,000 | 5,106,000 | 3,949,000 |
| Life Sciences | 87,099,000 | 94,302,000 | 95,345,000 |
| Psychology | 4,040,000 | 3,697,000 | 3,590,000 |
| Social Science | 14,883,000 | 15,425,000 | 16,906,000 |
| Other Sciences (Interdisciplinary) | 3,539,000 | 4,875,000 | 4,032,000 |
| Non-Science & Engineering | 6,103,000 | 6,085,000 | 4,608,000 |
| | 150,173,000 | 154,437,000 | 153,542,000 |

**Proposals Processed through Sponsored Programs Administration
and Total Dollars Requested from External Funding Sources
FY 2013 - FY 2015**

| College/Unit* | FY 2013 | | FY 2014 | | FY 2015 | |
|--|--------------|----------------------|-------------|----------------------|-------------|----------------------|
| | # Proposals | Requested | # Proposals | Requested | # Proposals | Requested |
| College of Agriculture, Food Systems and Natural Resources | 11 | \$1,222,738 | 26 | \$1,887,583 | 9 | \$117,396 |
| Agriculture Experiment Station and Extension Service | 631 | \$66,663,981 | 723 | \$67,791,645 | 661 | \$64,661,987 |
| College of Arts, Humanities and Social Sciences | 45 | \$5,799,629 | 39 | \$1,544,812 | 61 | \$2,544,075 |
| College of Business | 2 | \$147,437 | 1 | \$14,443 | 2 | \$5,000 |
| College of Engineering | 119 | \$24,887,713 | 124 | \$32,276,806 | 173 | \$43,308,647 |
| College of Human Development and Education | 33 | \$8,757,363 | 33 | \$1,895,568 | 43 | \$4,719,504 |
| College of Health Professions | 85 | \$62,548,999 | 80 | \$41,645,507 | 78 | \$24,792,569 |
| College of Science and Mathematics | 161 | \$61,820,843 | 177 | \$81,681,277 | 147 | \$53,954,944 |
| University Miscellaneous Offices | 111 | \$44,993,029 | 120 | \$37,324,544 | 119 | \$14,562,076 |
| Upper Great Plains Transportation Institute | 52 | \$14,990,451 | 52 | 11,839,849 | 38 | \$6,986,351 |
| TOTAL | 1,250 | \$291,832,183 | 1375 | \$277,902,034 | 1331 | \$215,652,549 |

*College/unit categories are determined by the principal investigator's department only; co-investigators' departments are not reflected.

Total Dollars Awarded from External Funding Sources FY 2013 - FY 2015

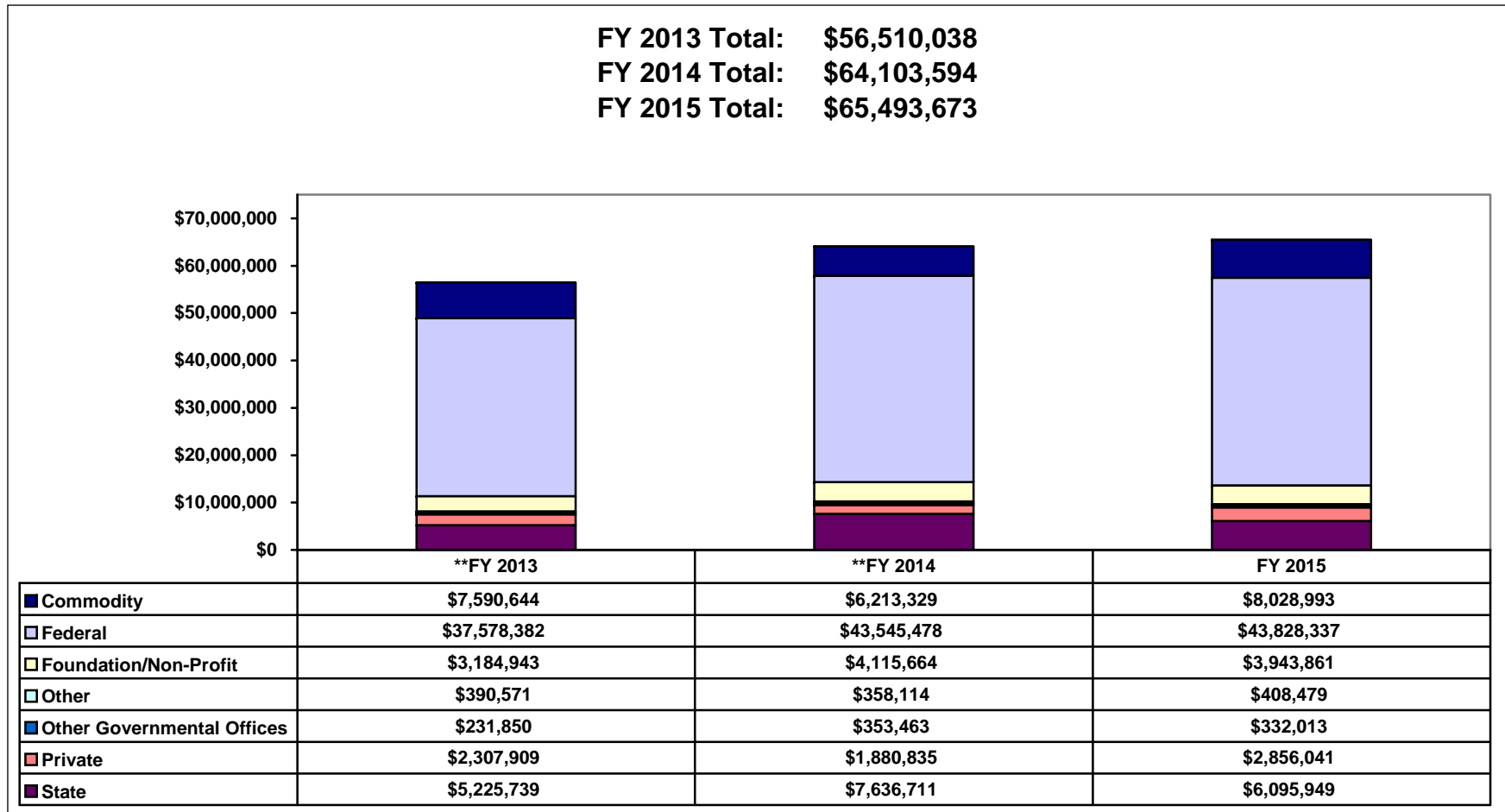
| | FY 2013 | FY 2014 | FY 2015 |
|--|---------------------|-----------------------|---------------------|
| College/Unit* | Awarded | Awarded | Awarded |
| College of Agriculture, Food Systems & Natural Resources | \$180,000 | \$559,126 | \$65,645 |
| Agriculture Experiment Station & Extension Service | \$22,968,491 | \$19,918,393 | \$22,074,887 |
| College of Arts, Humanities & Social Sciences | \$592,812 | \$803,113 | \$1,437,801 |
| College of Business | \$0 | \$14,426 | \$3,000 |
| College of Engineering | \$1,966,240 | \$1,076,236 | \$3,604,157 |
| College of Human Development & Education | \$2,203,554 | \$1,005,589 | \$860,695 |
| College of Health Professions | \$3,113,082 | \$5,629,736 | \$4,247,266 |
| College of Science & Mathematics | \$9,051,545 | \$9,875,201 | \$14,190,269 |
| University Miscellaneous Offices | \$8,221,401 | \$13,708,588 | \$11,681,903 |
| Upper Great Plains Transportation Institute | \$8,212,913 | \$11,513,186 | \$7,328,050 |
| TOTAL | \$56,510,038 | **\$64,103,594 | \$65,493,673 |

*College/unit categories are determined by the principal investigator's department only; co-investigators' departments are not reflected.

**Adjustments were made to the previously published FY 2014 External Awards total. The adjusted total is included here.

Summary of External Awards by Source*

FY 2013 - FY 2015



*Federal formula funds and state appropriated dollars are not included.

**Adjustments were made to the previously published FY 2013 and FY 2014 External Awards by Source totals. The adjusted award and source totals are included here.