

ON-CAMPUS LIVING

AT NORTH DAKOTA STATE UNIVERSITY

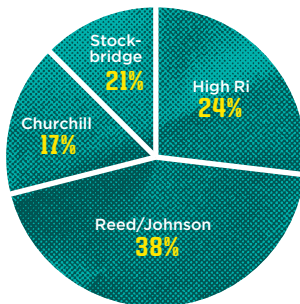
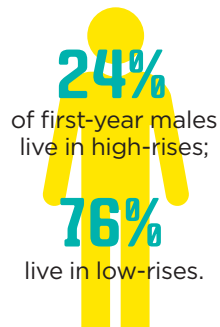
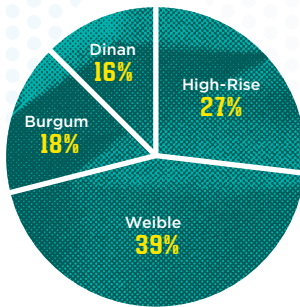
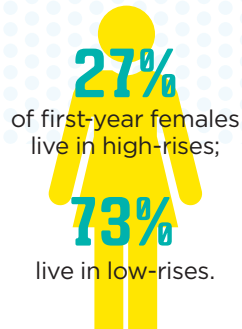
2,645 ➔ 555 ➔ 1,300

FIRST-YEAR STUDENTS
LIVE IN RESIDENCE HALLS

UPPERCLASSMEN LIVE
IN RESIDENCE HALLS

UPPERCLASSMEN LIVE
IN APARTMENTS

YOUR ODDS*



*Percentages represent the general student population, after spaces are reserved for upperclassmen, Learning Communities, ADA accessibility needs, athletes and staff.

HALLS WITH AC

Burgum, Pavek, Churchill, Seim

ROOM TYPES

- Singles - 4%
- Doubles - 68%
- Triples - 4.5%
- Suites - 23.5%

LEARNING COMMUNITIES

- Arts, Humanities and Social Sciences - *Thompson*
- Business - *Sevrinson*
- Engineering - *Sevrinson*
- Health Professions - *Thompson*
- Human Development and Education - *Seim*
- Wellness - *Seim*



10 HALLS AVAILABLE FOR FIRST-YEAR STUDENTS



KEY: Female Male Co-residential

*Pavek also is home to upperclassmen

NEWLY RENOVATED BATHROOMS



Churchill, Dinan, Stockbridge, Reed/Johnson

ALL HALLS FEATURE



Every hall has unique amenities and features, but all halls offer: printing stations, on-site mail, coinless laundry, cleaning supplies, cable and free video streaming services, recreation and media rooms, study lounges, daily newspaper service, community kitchen, vending machines, Wi-Fi, hall office with games/videos/entertainment options and secure keyless card entrances.



HALLS CONNECTED TO DINING CENTERS

Pavek, Seim, Sevrinson, Thompson - *West Dining Center*

Weible and Reed/Johnson - *Residence Dining Center*

NDSU RESIDENCE LIFE

ndsuhousing.com/reslife