



NDSU
GROUP DECISION CENTER

We help you make great decisions.

WHAT IS THE GDC?

The Group Decision Center (GDC) is a network of 40 laptop computers equipped with award-winning software that offers businesses, government bodies and non-profits an easy to use, high return on investment way to create or improve team collaboration.

Whether you are a manager of a team with communication issues or a board of directors working on a strategic plan, the GDC can help.

Because many organizations have locations or employees all over the world, the GDC software gives you the option to hold face-to-face sessions, distance-remote sessions or asynchronous work sessions utilizing all the same tools. By using the GDC Virtual Meetings, your business can save money on travel expenses.

CAPABILITIES OF THE GDC

Browser Access: Sessions can be accessed from any computer during virtual meetings.

Anonymity: Participants have the ability to contribute anonymously.

Agenda: An agenda can be displayed for all participants to follow.

Facilitator: A facilitator is available to guide sessions.

Categorizer: This tool categorizes and organizes ideas for participants.

Voting: Participants can vote anonymously and then view all opinions.

Analysis: Charts and graphs can be produced to analyze meeting results.

Confidentiality: All meetings are the property of the meeting owners. If you have a request for meeting information, please contact the meeting owners directly.





ESCAPABILITÉS CAPABILITÀ

ELECTRONIC AND

VIRTUAL MEETING USES

BRAINSTORMING

DECISION MAKING

EVALUATION

STRATEGIC PLANNING

FOCUS GROUPS

RISK ASSESSMENT

DISASTER PLANNING

PRODUCT INNOVATION

PROCESS IMPROVEMENT

STAFF MEETINGS

VENDOR EVALUATION

COMMITTEE MEETINGS

DISTANCE LEARNING





ELECTRONIC MEETINGS

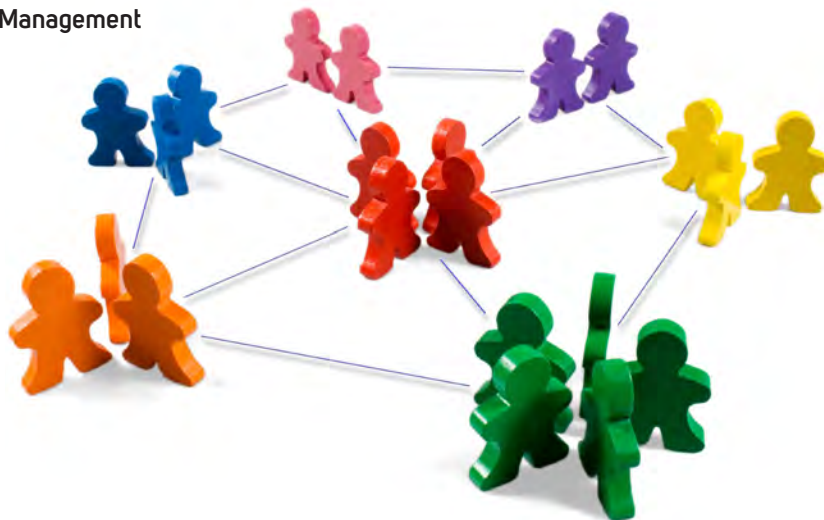


WEB-BASED SURVEYS:

The GDC can also help you create a web-based survey for market research, employee feedback or product evaluation. We will load your survey into the award-winning software and provide a unique URL for you to distribute any way you like.

FEATURES

- » Multiple Question Types
- » Survey Formatting
- » Survey Design
- » Unique URL
- » Response Management
- » Analysis
- » Security



WEB-BASED SURVEY USES

Educational

- » Quantitative/ Qualitative Research
- » Course Feedback
- » Gather Support for Thesis
- » Test a Hypothesis
- » Conduct Online Tests or Quizzes

Employer

- » Employee Feedback
- » Conduct Employee Reviews
- » Employee Satisfaction

Business

- » New Product Feedback
- » Customer Satisfaction
- » Understanding Purchasing Behavior
- » Event Feedback
- » Evaluate a Product
- » Measure Brand Perception
- » Market Analysis





HISTORY OF THE GDC

The Group Decision Center at NDSU opened in 1998 with the help of Cargill, a major corporate partner. The new technology laboratory consisted of 24 computers, a network server, a lead station and a Proxima projector. Today, the GDC is located at the Family Life Center on the NDSU campus and has been updated to include 40 laptop computers and a wireless network. The software was updated adding the ability to conduct more complex electronic meetings, online surveys and virtual meetings.



Decision Making



ER NDSU GROUP DECISION CENTER
GROUP DECISION CENTER NDSU GROUP DI
DECISION CENTER NDSU GROUP DECISION C
ENTER NDSU GROUP DECISION CENTER NDSU
GROUP DECISION CENTER NDSU GROUP DI
DECISION CENTER NDSU GROUP DECISION C
CENTER NDSU GROUP DECISION CENTER NDSU
SU GROUP DECISION CENTER NDSU GROUP DI
P DECISION CENTER NDSU GROUP DECISION C
N CENTER NDSU GROUP DECISION CENTER NDSU
NDSU GROUP DECISION CENTER NDSU GROUP DI
UP DECISION CENTER NDSU GROUP DECISION C
SION CENTER NDSU GROUP DECISION CENTER NDSU
ER NDSU GROUP DECISION CENTER NDSU GROUP DI
GROUP DECISION CENTER NDSU GROUP DECISION C
ON CENTER NDSU GROUP DECISION CENTER NDSU
ER NDSU GROUP DECISION CENTER NDSU GROUP DI
GROUP DECISION CENTER NDSU GROUP DECISION C
ON CENTER NDSU GROUP DECISION CENTER NDSU
ER NDSU GROUP DECISION CENTER NDSU GROUP DI
GROUP DECISION CENTER NDSU GROUP DECISION C
ON CENTER NDSU GROUP DECISION CENTER NDSU
ER NDSU GROUP DECISION CENTER NDSU GROUP DI
GROUP DECISION CENTER NDSU GROUP DECISION C



NDSU
GROUP DECISION CENTER

We help you make great decisions.

www.ndsu.edu/gdc

NDSU Dept. 2030 / 320 Family Life Center / P.O. Box 6050 / Fargo, ND 58108-6050 / 701-231-6414 / ndsu.gdc@ndsu.edu