

NORTH DAKOTA STATE UNIVERSITY



NEW STUDENT

GUIDEBOOK

NDSU

NEW STUDENT CHECKLIST

Full details on checklist items are available at ndsuh.edu/orientation/checklist.

Academic Tasks

- Complete steps for math and English placement
- Check Campus Connection for any holds or to-do items
- Meet with an academic advisor and register for classes
- Review Bison Ready course materials online from the NDSU Bookstore
- Contact the Center for Accessibility and Disability Resources, if applicable
- Send final transcripts

Financial Aid and Customer Account Tasks

- Complete all steps in the financial aid guide
- Set up a proxy with Delegate Access to view financial aid and/or make payments online, if desired
- Consider completing a FERPA release form
- Contact the NDSU Military and Veterans Certification Office, if applicable
- If you are a Minnesota resident, submit the reciprocity application

Prepare for a Successful Transition

- Submit your immunization record
- Upload your photo for your NDSU ID card
- Regularly check your NDSU email account
- Purchase a parking permit, if bringing a vehicle on campus
- Search for part-time jobs using Handshake
- Log into the Wellness Center portal and sign the waiver
- Check myNDSU for involvement opportunities
- Explore degree planning with Bison Advise
- Attend Welcome Week events (August)
- Bring employment documentation for form I-9 if you will start a job
- Update your preferred name, if applicable



TABLE OF CONTENTS

IT Accounts and Online Services Academic Colleges Undeclared Majors Helpful Apps	1-2
Academic Policies Degree Requirements Course Registration Academic Advising Academics	3-4
Financing Your Education Sources of Financial Aid	5-6
Customer Account Services Student Account Responsibilities Student Policies and Expectations	7-8
Involvement and Leadership	9-10
Residence Life	11-12
Supporting Your Well-Being.....	13-14
Dining	15-16
NDSU Bookstore NDSU ID Card Family Programs Transportation Services.....	17-18
Resource Directory.....	19-21
Notes.....	22-24

IT ACCOUNTS AND ONLINE SERVICES

NDSU utilizes a variety of technology tools to assist and support learning. Each tool is accessed with one of two information technology accounts: North Dakota University System (NDUS) ID or Bison Login. Both accounts must be claimed or activated following the steps at kb.ndsu.edu/it/99739. The online services listed are grouped by what account you will use to access them.



NORTH DAKOTA UNIVERSITY SYSTEM (NDUS) ID



Bison Advise

career-advising.ndsu.edu/bisonadvise/

Platform for students and advisors to collaborate on academic planning, schedule appointments, track communications and create semester-by-semester plans for graduation.

Blackboard

blackboard.ndus.edu/

The central hub for all course communications, assignments and materials. Many other technologies, including digital course materials, are integrated within Blackboard.

Campus Connection

studentadmin.connectnd.us/

Manage accounts, financial aid and registration processes.

Email

kb.ndsu.edu/it/97800

Email is the official means of communication at NDSU. Check it frequently for important messages from university departments and officials. Activate and check your NDSU email as soon as possible.

BISON LOGIN



Bison Bucks

kb.ndsu.edu/it/97695

A free campus debit account tied to your NDSU ID card that may be used at retail dining, NDSU Bookstore, Herd Shop, vending and more.

Computer Labs

kb.ndsu.edu/it/100682

There are numerous computer labs available to all students as well as department-specific computer labs.

Handshake

career-advising.ndsu.edu/handshake

Discover employment and internship opportunities, find out about career fairs, manage application materials, connect with employers, learn about industry trends and salaries and explore on-campus jobs, part-time positions and full-time job opportunities.

Library Services

library.ndsu.edu

Access research guides, online data and online requests.

MyNDSU

myndsu.ndsu.edu

Find student organization information and contacts and view campus events.

Wired/Wireless Network

kb.ndsu.edu/it/98167

A one-time device setup is required to connect wirelessly from anywhere on campus.



ACADEMIC COLLEGES

ndsuh.edu/academics

NDSU has five distinct academic colleges. Each consist of various academic departments with a variety of majors and minors. Each college has opportunities and support for students and faculty who are experts in their fields. View the academics website for a full list of majors and minors.

- College of Agriculture, Food Systems and Natural Resources
- College of Arts and Sciences
- College of Business
- College of Engineering
- College of Health and Human Sciences



UNDECLARED MAJORS

career-advising.ndsu.edu/exploratory-areas/

Many students wait to declare a major until after they have explored some options. The Career and Advising Center is here to help you investigate majors that align with your interests, strengths and goals, which can help find a major that's right for you. The courses you will take cover general education requirements and introductory courses for majors of interest.

Exploratory areas include:

- Business Studies
- Health and Life Sciences
- Liberal Arts, Communication and Design
- Social Science, Human Services and Education
- STEM

HELPFUL APPS



ATHLETICS APP

Follow your favorite teams with notifications, streaming, scores and stats, and interactive social media.



NDSU DINING

View menus, nutrition and allergy information and hours of operation.



DUO MOBILE

Make multi-factor authentication of IT accounts easy with a tap on your phone.



PASSPORT APP

Extend your parking time and receive notifications on time remaining.



GET MOBILE

Manage Bison Bucks, NDSU Dining meal plans, printing allocation and more.



PATHLIGHT APP

Enhances safety and allows for quick police response in the event of an emergency.



HANDSHAKE APP

Discover jobs and internships, view career fairs and events, connect with employers and get curated job recommendations.



WELLNESS CENTER

Stay informed of hours, intramural registration and events, GroupFIT classes and more.



MATBUS APP

Live bus tracking, real-time detour info, route planning and weather updates.

ACADEMIC POLICIES

catalog.ndsu.edu/academic-policies

FAMILY EDUCATIONAL RIGHTS AND PRIVACY ACT (FERPA)

catalog.ndsu.edu/academic-policies/ferpa

The federal Family Educational Rights and Privacy Act (FERPA) protects academic and financial information from being released to third parties, including parents/guardians. Certain non-sensitive demographic information is releasable to third parties upon request without the consent of the student. For a listing of these information categories, refer to the FERPA website. A student can restrict this non-sensitive information from being released with a written request to the Office of Registration and Records.

Students may consent to release financial and/or academic records to individuals of their choosing by completing the FERPA release form on Campus Connection by clicking on the eForms tile. This will allow a designee to obtain financial and/or academic information via phone, mail or email, if requested. Completing the FERPA release does not provide electronic access to records.

If there is a desire for third-party or proxy viewable access to certain Campus Connection pages, students can delegate access. Instructions for both the students and the third party are available at ndsu.edu/onestop/resources/help/delegates.

Academic Standing

Academic progress is measured by grades and credits earned. To be eligible to register without conditions, you must achieve/maintain good academic standing. This is defined as a minimum cumulative GPA of 2.0. Some programs of study have academic standards higher than the university minimum, and students should consult with their academic advisor for specific requirements.

Math/English Placement

Placement of students into entry-level math and English courses is determined by the NDSU math placement survey and NDSU English placement survey or by approved placement exam scores. More information is available on the academic policies website.

Transfer and Test Credit

In addition to credits earned at NDSU, students may have college-level credit by other means. Transfer credits may come from other colleges and universities (including those that administer Dual Credit, PSEO and College in the Schools), by examination (such as AP or CLEP) and by military courses. Transfer credit evaluations must be conducted to determine if the credits earned elsewhere are equivalent to those at NDSU. The resulting Transfer Credit Report, viewable in Campus Connection, will show the credits earned and NDSU equivalency.

Dates and Deadlines

ndsu.edu/onestop/dates

Students are responsible for all registration and financial activity on their accounts, and these activities have important dates and deadlines.

DEGREE REQUIREMENTS

catalog.ndsu.edu/curriculum/undergraduate/

Every degree program has an official curriculum guide that details exactly what requirements are necessary to earn the degree. There are also four-year sample plans of study that outline typical courses by semester and year.

General Education Requirements

catalog.ndsu.edu/academic-policies/undergraduate-policies/general-education

All students, regardless of major, must complete 39 general education credits to ensure they acquire the knowledge, perspectives and skills associated with a university education. Some general education courses also may count toward college/department and major requirements. There are eight categories of general education courses, and each has a set number of credits that must be completed.

- Communication (12 credits)
- Social and Behavioral Sciences (6 credits)
- Wellness (2 credits)
- Quantitative Reasoning (3 credits)
- Science and Technology (10 credits)
- Humanities and Fine Arts (6 credits)
- Intercultural Knowledge and Competence (fulfilled in combination with other categories)
- Digital Literacy (fulfilled in combination with other categories)

College/Department Requirements

Each college and academic department may have specific requirements to earn a degree. These will be outlined in the curriculum guide for each academic program.

Major Requirements

Major course requirements ensure students gain deeper knowledge in their specific majors. These also are outlined in the curriculum guide for each academic program.



COURSE REGISTRATION

nds.u.edu/onestop/registration/registering

Course registration is completed in Campus Connection. It is important to speak to your academic advisor prior to course registration. You can look in Campus Connection to resolve any holds that may prevent registration.

Schedule Planner

This tool within Campus Connection conveniently helps you build your class schedule and even generates different possible schedules from which to choose.

Add and Drop Classes

You may change your schedule by adding or dropping classes. Log into Campus Connection and click on the "Manage Classes" tile. If adding, click on "Class Search and Enroll." If dropping, click on "Drop Classes." Follow the steps provided to complete the transaction. Be sure to check drop/add deadlines to ensure these transactions take place within the acceptable timeframe.

Waitlists

When a class is full, a waitlist may be created. You may place yourself on the waitlist, and the system will add students to the course in the order they were added. You can view your position on the waitlist and also may remove yourself from the waitlist by "dropping" the course. It is your responsibility to check your class schedule to see if the course has been added. Waitlists close two days prior to the add/drop deadline.

Withdrawing

nds.u.edu/onestop/academics/registration/dropwithdraw

Withdrawing means removing enrollment in ALL classes. If your plans change and you must withdraw, you must submit a "Cancel/Withdraw to Zero" form in Campus Connection by clicking on the eForms tile. All students should speak with their academic advisor or One Stop staff before withdrawing.

ACADEMIC ADVISING

career-advising.ndsu.edu

Academic Advisors

Academic advisors assist students with selecting courses, interpreting university policies, understanding degree requirements, identifying campus resources and making informed choices regarding academic and career plans. Each student is assigned an academic advisor according to the student's chosen major. Students with undeclared majors are assigned an advisor from the Career and Advising Center. Find your assigned academic advisor in the "Academic Progress" tile in Campus Connection.

Bison Advise

career-advising.ndsu.edu/bisonadvise

Bison Advise is a platform designed for students and advisors to collaborate on academic planning and registration. It allows students to schedule advising and tutoring appointments, access past communications and work with advisors to develop semester-by-semester plans, ensuring a clear path towards graduation.

ACADEMICS

Successful students use the support and tools available to them, and NDSU provides many services to help you meet your academic and career goals.

ACE Tutoring

nds.u.edu/ace

ACE offers peer tutoring through individual appointments, drop-in times or group study as well as quiet spaces for independent study.

Career and Advising Center

career-advising.ndsu.edu

The Career and Advising Center connects students with experiential learning through internships and co-op experiences. Additional career preparation includes assistance with job searches, resumes, cover letters and interviews.

Center for Accessibility and Disability Resources

nds.u.edu/accessibility-disability

The Center for Accessibility and Disability Resources facilitates reasonable accommodations to support students with documented disabilities and/or temporary medical conditions.

Center for Writers

nds.u.edu/cfwriters

The Center for Writers provides one-on-one writing consultations that help students with any type of writing.

Class Syllabi

Each class has a syllabus that outlines expectations, assignments, grading policies and other information specific to the class. If additional assistance is available for a class, it will be included in the syllabus. Check it out!

Instructional Design Center

nds.u.edu/it/help/idc

The Instructional Design Center provides self-paced resources as well as one-on-one support to help students learn through technology.

Learning Assistant Program

nds.u.edu/undergraduate/learningassistantprogram

Learning assistants are peers who have successfully completed a course and work alongside an instructor to support in-class learning, lead study groups or review sessions and offer individual support to students in the class.

NDSU Libraries

library.ndsu.edu

NDSU has multiple library branches that specialize in different academic disciplines with librarians who can help students with information searches using collections and online databases. The main library offers a digital fabrication lab, media production lab, data visualization lab and comfortable spaces to study and relax.

Office Hours

Faculty, teaching assistants and learning assistants have office hours when students can drop by for assistance. Office hours and locations are listed in class syllabi. Students may also make appointments with faculty at other times.

Rising Scholars Peer Mentor Program

nds.u.edu/ace/rising_scholars

Rising Scholars Peer Mentors provide individualized support including goal setting, time management, study skills and building on strengths.

TRIO Student Support Services

nds.u.edu/trioss

TRIO Student Support Services is a grant-funded program that provides one-on-one peer tutoring, peer mentoring, guidance from educational specialists and small-group instruction for eligible students.

Veterans Educational Training

nds.u.edu/vet

Veterans Educational Training offers support, skill development and referral services to former and current military and dependent students.

FINANCING YOUR EDUCATION

Financial aid helps cover educational expenses including tuition and fees, books, course materials, supplies and equipment, plus living expenses like food, housing and transportation. It's important to be informed and have a plan for covering the cost of your education. Staff from NDSU One Stop and the Office of Financial Aid and Scholarships will be happy to assist you with your financial aid questions.

SOURCES OF FINANCIAL AID

ndsu.edu/onestop/finaid

FEDERAL FINANCIAL AID:

studentaid.gov

Federal aid comes from the U.S. Department of Education. It is the largest source of aid available to students who have submitted the Free Application for Federal Student Aid (FAFSA).

TYPES OF FINANCIAL AID

ndsu.edu/onestop/finaid

Grants: These funds do not require repayment and are awarded to students who demonstrate financial need.

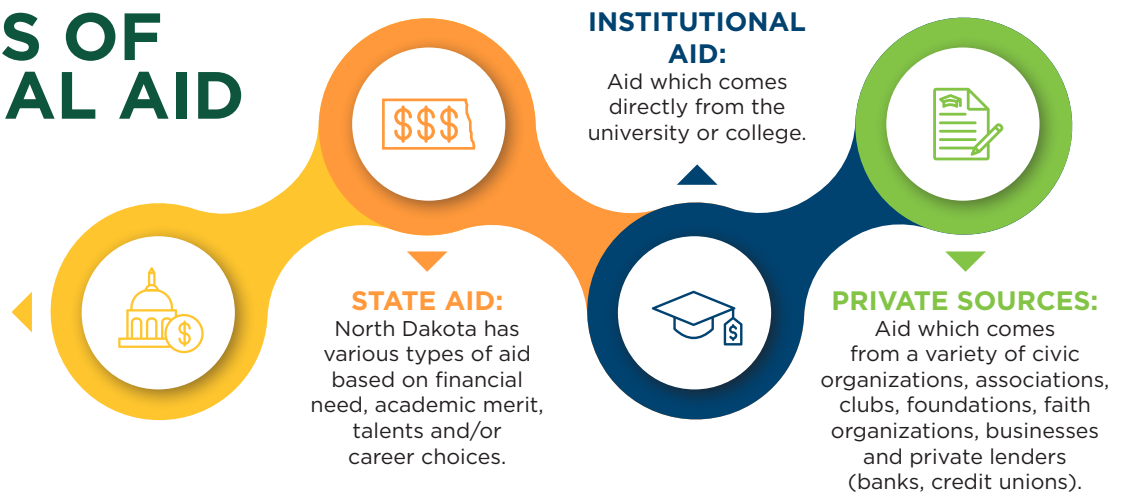
Federal Loans: These are federal funds which must be repaid with interest after you graduate, enroll less than half-time or cease enrollment. Subsidized loans do not accrue interest while you are enrolled at least half-time. Unsubsidized loans do accrue interest beginning the date funds are disbursed to your account.

Private Student Loans: A co-signer with good credit is required for most private student loans. Interest accrues once funds are

disbursed, and repayment options vary. Use the FASTChoice loan comparison tool on the One Stop website to determine which loan program best suits your needs.

Scholarships: These are funds you may apply for that are awarded based on special talents, skills, academic achievement or financial need. First-time freshman and transfer scholarships are administered through the NDSU Office of Admission.

Federal Work-Study: These are funds you may earn by working on or off campus for an approved work-study employer. Money earned is paid directly to the student in the form of a paycheck.





FINANCIAL AID CHECKLIST

Refer to the **Financial Aid Guide for New Students** at ndsu.edu/onestop/finaid/apply/nextsteps for detailed steps related to items below:

- Respond to your financial aid offer through Campus Connection.
 - Claim your account and log into Campus Connection.
 - Review holds and your “TO-DO” list.
 - Review your financial aid offer.
 - Estimate your bill.
 - Accept, reduce or decline aid offered.
 - Report external scholarships/awards.
 - Submit scholarship checks to NDSU One Stop.
- If you are accepting a federal direct loan, complete the following at studentaid.gov under Grants and Loans:
 - Loan Entrance Counseling
 - Master Promissory Note (MPN)
 - Annual Student Loan Acknowledgment
- Review options and resources to help cover expenses and apply for a private loan, if needed.
- Enroll in direct deposit if you anticipate getting a refund.
- Complete the FERPA Consent to Release form and grant Delegated Access, if desired.

UNDERSTANDING COST OF ATTENDANCE

ndsu.edu/onestop/account/tuition

A financial aid cost of attendance (COA) is an estimate of educational expenses and is used to determine financial aid eligibility.

What’s included in the COA?

- Tuition and fees
- Books, equipment and school supplies
- Food and housing
- Transportation
- Loan fees
- Miscellaneous personal expenses

What factors influence the COA?

- State, province or country of residence
- Number of enrolled credits
- Academic program (some programs have a higher tuition rate)

NET PRICE CALCULATOR

ndsu.edu/admission/cost-aid

Estimate your expenses and financial aid online.

APPLY FOR FINANCIAL AID

studentaid.gov

The first step in the financial aid process is to submit the Free Application for Federal Student Aid (FAFSA) using NDSU’s school code (002997) at studentaid.gov.

The FAFSA results determine your eligibility for federal funds, along with many state and institutional awards.

SATISFACTORY ACADEMIC PROGRESS

ndsu.edu/onestop/finaid/sap

You must meet certain academic requirements called the Standards of Satisfactory Academic Progress (SAP) to receive federal financial aid. These requirements include maintaining a minimum cumulative GPA of 2.0 and successfully completing two-thirds (67%) of your cumulative attempted credits. If you do not meet SAP, you will be placed on Financial Aid Warning. If SAP is still unmet after your semester of warning, you will be placed on Financial Aid Disqualification and will lose your eligibility for federal financial aid.

CAMPUS EMPLOYMENT

career-advising.ndsu.edu/handshake

Part-time jobs are available to all students with or without a federal work-study award. Go to HANDSHAKE to look for available jobs both on and off campus and follow the posted instructions to apply.

CHANGES TO YOUR FINANCIAL AID OFFER

NDSU is required by federal regulations to adjust your offer based on additional information that may become available. You will receive notification via your NDSU email account if there are revisions to your financial aid offer.

CUSTOMER ACCOUNT SERVICES

Customer Account Services manages billing and collecting costs associated with attending NDSU.

BILLING STATEMENTS

ndsu.edu/onestop/account/billing

Billing statements are not mailed to you; however, you may view your account balance anytime on Campus Connection. Additionally, monthly e-bill notifications are sent to your NDSU email account. You also may sign up for text message reminders.

It is your responsibility to confirm the accuracy of your charges. Financial aid is applied to your account approximately two weeks into the semester. Payment on the remaining balance can be made a variety of ways:

- **Pay online** by electronic funds transfer or credit card via Campus Connection. Credit card transactions are assessed a non-refundable service fee of 2.85%.
- You may grant Delegate Access to a proxy to make online payments on your behalf.
- **Pay in person** at NDSU One Stop in the Memorial Union (cash or check only).
- **Mail checks** to NDSU One Stop; Dept. 3110; PO Box 6050; Fargo, ND 58018-6050.

Alternative methods are available as well:

- Enroll in a **payment plan** by the semester due date and divide your responsibility into three monthly installments.
- **Third parties** (i.e. National Guard or Vocational Rehab) may pay tuition. Please notify One Stop with documentation prior to the start of the semester.
- Send a payment from a Qualified Tuition Program (i.e. 529 college savings plan) directly to NDSU. Please allow 4-6 weeks for the 529 plan administrator to process your request and deliver payment to NDSU.

PAYMENT PLANS

ndsu.edu/onestop/account/billing/payment/plan

Payment plans are available to help students spread their financial responsibility over a period of a few months rather than making payment in a single lump sum. Available plan options will appear in the online payment portal within Campus Connection shortly before the start of the semester. Students must enroll within the first few weeks of the semester and a \$30 non-refundable enrollment fee is due at that time. Down payments to reduce the amount of the monthly installments are strongly encouraged. Payments are made automatically on the due date each month.

NDSU DATES AND DEADLINES

ndsu.edu/onestop/dates

It is your responsibility to make payment by the published deadline. Failure to do so may result in late fees, enrollment holds or cancellation of registration.

DELEGATE ACCESS AND FERPA

ndsu.edu/onestop/resources/access

Students may provide access to their accounts in a variety of ways:

- Users with delegated access are granted permission to view specific student account pages and data within Campus Connection.
- Students may identify proxies to make online payments using Delegate Access.
- Individuals with a FERPA Release Form on file are allowed to contact NDSU staff to discuss financial and/or academic information.



MINNESOTA TUITION RECIPROCITY

ndsu.edu/onestop/account/residency/minnesota

Minnesota residents may qualify for a reduced tuition rate that is comparable to the North Dakota tuition rate. Beginning in Fall 2025, **all Minnesota residents attending NDSU must apply for reciprocity** through the MN Office of Higher Education website ohe.mn.gov/paying-college/other-ways-pay/tuition-reciprocity.

STUDENT ACCOUNT RESPONSIBILITIES

- Keep track of your Campus Connection account activity such as registration, balances and financial aid.
- Check your Campus Connection to-do list and complete any tasks listed there to avoid account holds.
- If you decide to drop a course or withdraw from the university, be sure to check deadlines and follow procedures. It's best to consult with your academic advisor before taking these steps.
- Make a plan before the semester begins for paying any costs not covered by financial aid and scholarships. Your plan might include applying for private loans.
- Make payments on time. If a third party is making payments, make sure they have correct information and access. If someone will make payments for you, be sure to set up authorized payer access through Campus Connection.
- Check that your contact information is correct in Campus Connection.



DROPPING COURSES OR WITHDRAWING TO ZERO CREDITS

ndsu.edu/onestop/academics/registration/dropwithdraw

DROPPING A COURSE:

When dropping a class, you will remain enrolled in other classes. Classes may be dropped via Campus Connection and results in a 100% or no refund of tuition/fees, depending on the timing of the drop. It is important that students make their drop decisions early in the semester as there are no partial refunds for dropped classes.

OR

WITHDRAWING TO ZERO CREDITS:

Withdrawing means that you are terminating enrollment in all courses. You must submit a "cancel/withdraw to zero" form in Campus Connection by clicking on the eForms tile. Withdrawal results in a 100%, 75%, 50% or zero refund of tuition/fees, depending on the timing of the withdrawal. You may be required to repay a portion of the financial aid received for the term if withdrawal occurs after financial aid disbursement. All students should speak with their academic advisor or One Stop staff before withdrawing.

STUDENT POLICIES AND EXPECTATIONS

ndsu.edu/policy

CODE OF CONDUCT POLICY (section 6, policy 601)
All students are expected to know and follow the policies and procedures within the Code of Student Conduct.

SUBSTANCE FREE CAMPUS (section 1, policies 153 and 155)
NDSU has a genuine caring concern for the community and recognizes the misuse and abuse of alcohol and other drugs can limit academic, personal and career achievement. For this reason, alcohol, marijuana, tobacco and nicotine products, and other illicit drugs and paraphernalia are prohibited. Please reference ndsu.edu/policy for the most up-to-date version of policy 153.

COMMUNITY OF RESPECT (section 1, policy 100)
NDSU is committed to providing a safe and non-discriminatory learning, living and working environment for every member of the university community. NDSU prohibits discrimination and harassment on the basis of age, color, gender expression/identity, genetic information, marital status, national origin, physical or mental disability, pregnancy, public assistance status, race, religion, sex, sexual orientation, spousal relationship to current employee or veteran status.



ENGAGE, CONNECT AND GROW

You'll get a well-rounded education that prepares you for lifelong learning, including self-discovery and growth, healthy connections with others, and learning from and respecting differences. NDSU has many opportunities to engage with and contribute to the community.



INVOLVEMENT AND LEADERSHIP

CAMPUS ATTRACTIONS

nds.edu/student-engagement/campus-attractions

This student-run board provides unique and entertaining programming opportunities. Get involved by attending events or consider becoming a board member. Committee membership is open to all NDSU students.

CLUB SPORTS

club.fusionfamily.com/@/nds

Whether you're continuing a sport you love or looking to try something new, Club Sports combine the best of competition, teamwork and community. With more than 30 different clubs, you'll find opportunities to train, travel and compete against other colleges regionally and nationally.

FRATERNITY AND SORORITY LIFE

nds.edu/student-engagement/fraternity-sorority-life

Fraternity and sorority members are guided by four values: scholarship, leadership, service and brotherhood and sisterhood. Our community is more than 100 years old and members report a stronger sense of belonging on campus and have higher GPAs than non-affiliated members. If interested in learning more and how to join, please email nds.ose@nds.edu.

LEADERSHIP PROGRAMS

nds.edu/student-engagement/leadership_programs

Interactive leadership programs and workshops enhance real-world skills and career readiness.

CENTER FOR COMMUNITY AND BELONGING

nds.edu/community_belonging

Empowers students from all backgrounds to engage in meaningful dialogue, cultivate awareness across differences and develop a sense of community and belonging.

RESERVE OFFICER TRAINING CORPS (ROTC)

Air Force ROTC Army ROTC
nds.edu/armyrotc

Earn credits, enhance your leadership and gain the experiences necessary to help you succeed in any competitive environment.

RESIDENCE LIFE LEADERSHIP

nds.edu/residence-life/leadership

With many leadership opportunities, students connect with their local, regional and national peers.

STUDENT ORGANIZATIONS

mynds.ndsu.edu

More than 275 student organizations provide a variety of academic, cultural and recreational involvement opportunities.

STUDY ABROAD

nds.edu/international/study-abroad

Transform your education through experiential global learning. Expand your horizons, explore new cultures and create lifelong memories while earning credits. Begin your global journey today.

STUDENT GOVERNMENT

nds.edu/sg

Student Government represents and advocates for the student body of NDSU. Students of all leadership and experience levels are welcome to apply to be part of the team.

VOLUNTEER NETWORK

nds.edu/student-engagement/volunteernetwork

Volunteer Network connects individuals and groups with non-profit partners to engage in service that meets the needs of our community while also planning events around civic and social challenges.

RESIDENCE LIFE

LIFE

Why students love to
#LIVewithTHEHERD

ndsuh.edu/residence-life

THE RESIDENCE LIFE EXPERIENCE

More than just a bed, Residence Life provides a place to grow, learn, connect, explore and make an impact. You create the experience you want.

LIVE CLOSER

The convenience of living on campus can't be beat.

LIVE SMARTER

Students who live on campus have higher GPAs on average and are more likely to graduate in four years than those who live off campus.

LIVE CONNECTED

Friends, on-campus activities, campus resources, on-campus dining—living on campus keeps you close to the things you value.

LIVE SUPPORTED

Live next door to your friends and surround yourself with professional support systems like campus staff, faculty and campus resources.

LIVE SECURE

24-hour keycard secure entrances, entrance security cameras, onsite staff and university police access and coverage offer added safety.





PREPARING TO MOVE IN

Review your room assignment as well as your roommate's name and email address in your housing portal at ndsus.edu/residence-life/portal.

Visit ndsus.edu/residence-life/preparing-to-move-in for the following information:

- Move-in day details
- Sign up form for move-in day time slots (fall semester only)
- Room dimensions, bed size, lofting options and amenities
- Packing guidelines
- Driving and parking directions for move-in day
- Frequently asked questions

MAKE AN IMPACT

ndsus.edu/residence-life/leadership

Help create the experience you want in your hall – plan events, make your voice heard and make a difference across campus and in the community. Residence Life provides many ways to get involved.

Hall Government | Residence Hall Association | National Residence Hall Honorary | LEAD

UPPER-DIVISION STUDENT LIVING

Residence Life is more than a first-year experience. Transfer and returning students can choose from modern apartment living to state-of-the-art residence halls and enjoy the conveniences of living on campus. Student-friendly apartment contracts provide maximum flexibility to fit your needs.

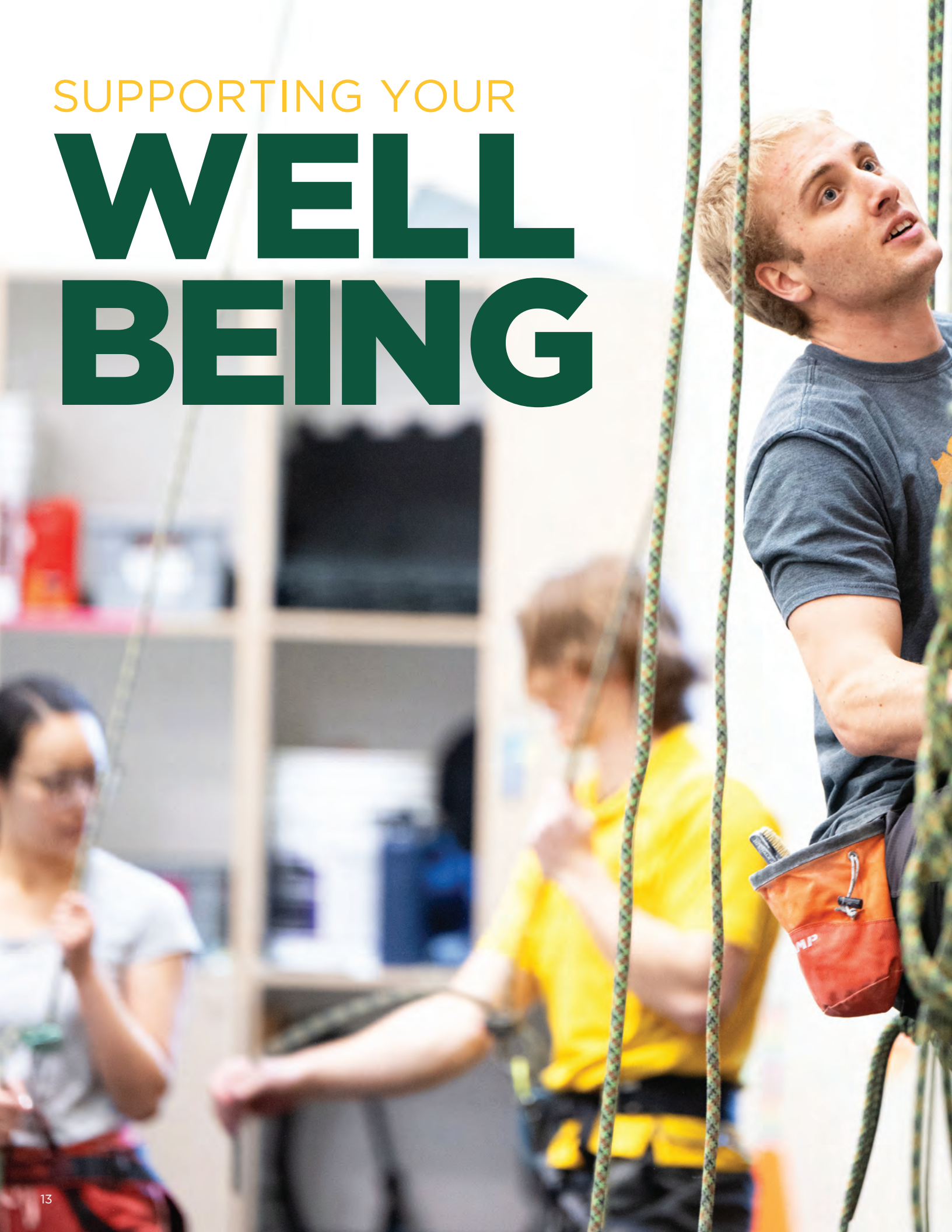
»»»»» **STAY IN**
THE KNOW

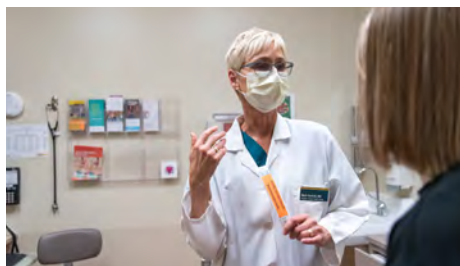
Follow [@ndsus.residencelife](https://www.facebook.com/ndsus.residencelife) on Facebook and Instagram to learn about hall events, important dates and Residence Life features.



SUPPORTING YOUR

WELL BEING





STUDENT HEALTH SERVICE

ndsu.edu/studenthealthservice

Your Campus Clinic and Pharmacy

Located in the Wallman Wellness Center, our team of highly qualified professionals supports the health and well-being of our diverse student population by providing the following health services to enrolled students:

- **General Health/Medical Care**
 - Healthcare providers diagnose and treat conditions and prescribe medications as needed.
 - Examples of services include cold/flu, annual physicals, injuries, STI testing, UTIs, immunizations, etc.
- **Insurance/Billing**
 - Claims can be submitted to your insurance plan.
 - Patient responsibility charges are posted to your student account
- **Mental Health Care**
 - Diagnosis and treatment is available for anxiety, depression, ADHD management and more.
- **Medical Laboratory**
 - On-site lab testing assists in diagnosis and treatment.
- **X-Ray**
 - On-site x-ray imaging is available.
- **Pharmacy**
 - Fill new or transferred prescriptions
 - Purchase over-the-counter products/medications.
- **Dietitian**
 - Consultations and education for healthy eating, food sensitivities, eating behaviors and other nutrition concerns including dietary issues related to acute and chronic health conditions.
- **Health promotion**
 - Health and well-being programming, events and educational opportunities

COUNSELING CENTER

ndsu.edu/counseling

The Counseling Center offers confidential support services to students at no additional charge. Services include individual counseling, group therapy, crisis intervention, and workshops. A relaxation space is also available for de-stressing. The Counseling Center can help students navigate challenges and thrive while at NDSU.

NDSU CARE TEAM

ndsu.edu/deanofstudents/advocacy

Anyone who is concerned that a student may be in distress or is in need of additional support may contact the NDSU Care Team. Care Team referrals connect students with a licensed social worker who helps students

assess their needs and develop a care plan. The individualized care plan may include assisting with coordination of services on and off campus, advocating and monitoring progress.

WELLNESS CENTER

ndsu.edu/wellness

The Wellness Center is a state-of-the-art facility that fosters community and inspires healthy lifestyles through a variety of programs and services that appeal to all fitness levels and recreational interests. The mandatory Wellness Fee funds the Wellness Center and grants you access to many features, including:

- Club Sports*
- Intramurals*
- 33-foot climbing wall
- Basketball and racquetball courts
- Leisure and lap pools
- Sauna and hot tub
- Safety education courses
- Group fitness classes
- Personal training*
- Outdoor Adventures*
- Cardio and strength equipment
- Cycling and martial arts studios
- Walking/running track
- Child care service* * additional fees

UNIVERSITY POLICE

ndsu.edu/police_safety

The University Police are responsible for 24/7 law enforcement, public safety duties and emergency response. An annual security report is available on the University Police website.

- **Pathlight**
 - This is a smartphone app to help you reach your destination safely.
- **Campus Safety Escort Services**
 - NDSU police and/or public safety officers provide escorts as a personal safety and security service.
- **Campus Emergency Notification Systems (CENS)**
 - CENS is how NDSU informs the campus community about campus closures or emergencies. Communication will include specific instructions or recommendations for safety. Make sure your emergency contact information is up-to-date in Campus Connection.

D I N I N G



ndsuhighlights.com/dining

THE DINING EXPERIENCE

NDSU offers an unparalleled dining experience. With multiple dining centers, coffee shops and a food court, we can satisfy every craving and keep you coming back for more.



MEAL PLAN OPTIONS

- **Unlimited Access Meal Plans:** Incoming first-year students living in a residence hall must select a five-day (Monday-Friday) or seven-day (Monday-Sunday) meal plan. Both plans offer unlimited access to our dining center and dining dollars.
 - The five-day plan is only recommended for students who plan to leave campus every weekend. The seven-day plan is less than \$20 more per weekend.
- **Block Meal Plans:** Block plans are available for purchase in increments of 25 and can be used at our dining centers, the Union Market, the Micro Market at Barry Hall, plus select food court and coffee shop locations on campus.

DINING CENTERS

Providing all-you-care-to-eat, our dining centers offer a wide array of options like homestyle classics, global cuisine, do-it-yourself grills and expansive salad, sandwich and panini bars. Expert culinary team members, including registered dietitians, are available to meet with students with special dietary needs.

- **West Dining Center** is a tree nut- and peanut-free facility connected to Cater, Pavek, Seim, Sevrinson and Thompson halls. Unique features include wood-stone pizza, in-house bakery and Clean Eats—a station that offers all menu items free from the top nine allergens.
- **Residence Dining Center** is connected to Reed/Johnson and Weible halls. Distinctive features include Creations, a station where you fully customize your meal, and Bison Beanery, a full-service coffee shop that offers all your coffee favorites at no extra charge.

Menus: Visit ndsudining.com/menu or download the NDSU Dining App to view menu and nutrition information.

COFFEE SHOPS

Featuring a Caribou Coffee® and a Proudly Serving Starbucks® location, our campus offers multiple full-service coffee shops.

FOOD COURT AND UNION MARKET

- **Food Court:** Located on the lower level of the Memorial Union, the food court features popular options like Burgers at the U, Chick-fil-A® and Twisted Taco.
- **Union Market:** Conveniently located in the Memorial Union, it is your ultimate dining destination! With a diverse array of mouthwatering options like Comfort Cuisine, Marketplace Grille and Deli, Greens & Grains, The Breakfast Nook, and a Grab-N-Go section - it's the perfect spot to satisfy every craving and fuel your day.



STAY CONNECTED

Stay connected with all things dining at NDSU! Follow @ndsudining on Facebook, TikTok, and Instagram for updates on dining specials, themed meals, features and more!



NDSU books

NDSU BOOKSTORE

ndsubookstore.com

The NDSU Bookstore makes student success and affordability a priority for our students. Whether it's finding the right materials for class, a computer or iPad, Bison spirit gear, or even your graduation cap and gown, the NDSU Bookstore is part of your NDSU adventure from your first day to your graduation day!

QUESTIONS

Email:

ndsu.bookstore@ndsu.edu

Phone:

701-231-7761

FOLLOW US

Get updates on our latest looks and never miss our deals! Follow @NDSUBookstore on Instagram, Facebook, and X.



Authorized Campus Store



Authorized Reseller

Shop for officially licensed merchandise online or visit us at our convenient location in the NDSU Memorial Union.

NDSU ID CARD

usbank.com/ndsu

NDSU ID Cards are printed in the IT Service Center, located in the Quentin Burdick Building. Your NDSU ID card will be used in many ways across campus:

- Entry into your residence hall, dining centers and the Wallman Wellness Center
- Use the GET App on your mobile device for card account management
- Charge books to your account at the NDSU Bookstore
- Checkout library materials
- Ride the MAT bus on and off campus
- Access printing allocation
- Make purchases using Bison Bucks
- Use as a U.S. Bank ATM/Debit Card (when linked to a U.S. Bank checking account). Details about the Bison ID Card and U.S. Bank partnership are at kb.ndsu.edu/it/104654.

READY TO BANK SMARTLY? US BANK

usbank.com/ndsu

Conveniently located on campus in Memorial Union, US Bank helps students take the stress out of finances. Students may open a U.S. Bank Smartly® checking account and link it to their NDSU ID Card, making it your Campus ID and ATM/Debit Card—all in one. All regular account opening procedures apply including a required \$25 minimum deposit. Deposit products offered by U.S. Bank National Association. Member FDIC. ©2026 U.S. Bank.





FAMILY PROGRAMS

nds.u.edu/familyprograms

NDSU Family Programs helps your supporters navigate the transition to NDSU by keeping them informed and connected. Visit the Family Programs website to:

- Sign up for the NDSU Families Listserv for our newsletter and updates.
- Learn about campus resources.
- Review frequently asked questions.
- Join an NDSU Families Facebook group.

TRANSPORTATION SERVICES

PARKING

nds.u.edu/parking

Each student is eligible for one parking permit and the location of the assigned lot is determined by the student's residence. When permits are on sale, students may purchase one online at nds.u.edu/parking/permitsales_student/ as early as four hours after registering for classes. Please refer to the Transportation Services website for NDSU parking regulations.

METRO AREA TRANSIT (MATBUS)

nds.u.edu/parking/matbus_transit

Students may ride any MATBUS route within FM metro area at no cost by using their NDSU ID card. MATBUS is recommended for students with classes at the downtown campus as there is no designated student parking. The schedule for downtown classes builds in bus travel time.



RESOURCE DIRECTORY

Take control of your academics by using services early and regularly. The following resources are available through tuition and fees.

ACE Tutoring

By-appointment and drop-in tutoring available for various classes facilitated by academically successful peer tutors
701.231.8379 • nds.ace@nds.edu
nds.edu/ace

Career and Advising Center

Academic advising for students, information about general education requirements and academic policies, major/career exploration, job/internship preparation and search assistance
701.231.7111 • nds.cac@nds.edu
career-advising.nds.edu

Center for Accessibility and Disability Resources

Reasonable accommodations, information and referrals for students with documented disabilities and/or temporary medical conditions
701.231.8463 • nds.cadr@nds.edu
nds.edu/accessibility-disability

Center for Community and Belonging

Empowers students from all backgrounds to engage in meaningful dialogue, cultivate awareness across differences and develop a sense of community and belonging
701.231.1029
nds.edu/community-belonging

Center for Writers

One-on-one writing assistance, workshops and writing Communities
701.231.7927 • nds.cfw@nds.edu
nds.edu/cfwriters

Counseling Center

Individual and group counseling for personal and emotional issues
701.231.7671
nds.edu/counseling

Dean of Students

Supports all students by addressing their concerns, connecting them to resources and working with campus partners to provide holistic care
701-231-7701
nds.edu/deanofstudents

Equal Opportunity and Title IX Compliance Office

Resource for questions, concerns and support regarding equal opportunity and non-discrimination
701.231.7708 • nds.eoaa@nds.edu
nds.edu/equity

Faculty, Teaching Assistants (TAs) and Learning Assistants (LAs)

In addition to faculty, some classes have TAs or LAs who offer one-on-one support during student help hours, lead group study and review sessions and provide feedback on your work

Family Programs

Informs students' family and other supporters about the transition to NDSU as well as campus resources
701.231.8379 • nds.familyprograms@nds.edu
nds.edu/familyprograms





Global Programs and Services

Connects and prepares students for study abroad opportunities
701.231.7895
ndsu.edu/international

Instructional Design Center

One-on-one assistance with technology-related coursework and projects; audio and video editing and other multimedia resources are available
701.231.5130 • instructional.design@ndsu.edu
ndsu.edu/it/help/idc/

IT Service Center

Assistance with issues related to Bison ID card, Blackboard, cyber security, email, internet and wireless, multi-factor authentication, printing, storage and general account maintenance
701.231.8685 • ndsu.itservice@ndsu.edu
ndsu.edu/it/help

NDSU Bookstore

Provides course materials, supplies, technology, apparel and gifts
701.231.7761 • ndsu.bookstore@ndsu.edu
ndsbookstore.com

NDSU Care Team

A team of professional care providers that addresses student concerns, connects students to resources and provides referrals
701.231.7701
ndsu.edu/deanofstudents

NDSU Dining

Manages dining centers, a food court, coffee shops and meal plans
701.231.7001 • ndsu.dining@ndsu.edu
ndsu.edu/dining

NDSU Libraries

Collections and online databases, research assistance, study rooms and spaces, computers and collaboration areas, with multiple library branches that specialize in different academic disciplines. The Main Library includes a digital fabrication lab, media production lab, data visualization lab, relaxation and reflection rooms.
701.231.8888 • ndsu.library@ndsu.edu
library.ndsu.edu

New Student Programs

Supports new students and their loved ones through transition with Orientation and Welcome Week
701.231.8379 • ndsu.welcomeweek@ndsu.edu
ndsu.edu/welcomeweek

Office of Student Engagement

Offers a variety of campus involvement, connection and leadership opportunities
701.231.7787 • ndsu.ose@ndsu.edu
ndsu.edu/student-engagement

One Stop

Assistance with transactions involving registration, financial aid, payments and account activity
701.231.6200
ndsu.edu/onestop



RESOURCE DIRECTORY

(continued)

Parking and Transportation Services

Manages parking permits, lots and regulations as well as student transportation services

701.231.5771 • ndsu.parking@ndsu.edu
ndsu.edu/parking

Registration and Records

Academic policy and procedure information, transfer credit evaluation, degree progress tracking and transcript services

701.231.7981 • ndsu.registrar@ndsu.edu
ndsu.edu/registrar

Residence Life

Provides campus living options, community building and support staff within the halls

701.231.7557 • ndsu.residence.life@ndsu.edu
ndsu.edu/residence-life

Rising Scholars Peer Mentor Program

Provides individualized support including goal setting, time management, study skills and building on strengths

701.231.8379 • ndsu.risingscholars@ndsu.edu
ndsu.edu/ace/rising_scholars

Student Health Service

Campus clinic and pharmacy providing medical services

701.231.7331 • ndsu.studenthealthservice@ndsu.edu
ndsu.edu/studenthealthservice

TRIO Student Support Services

One-on-one tutoring, peer mentoring, guidance from education specialists and small-group instruction for eligible students.

Reference the website for eligibility criteria and the program application

701.231.7311
ndsu.edu/trio

University Police and Safety Office

Law enforcement, public safety and emergency response across campus

701.231.8998 • ndsu.police.safety@ndsu.edu
ndsu.edu/police_safety

Veterans Educational Training

General support and referral services for former and current military and dependent students

701.231.9706
ndsu.edu/vet

Wellness Center

Fitness, recreation and aquatic opportunities to enhance well-being

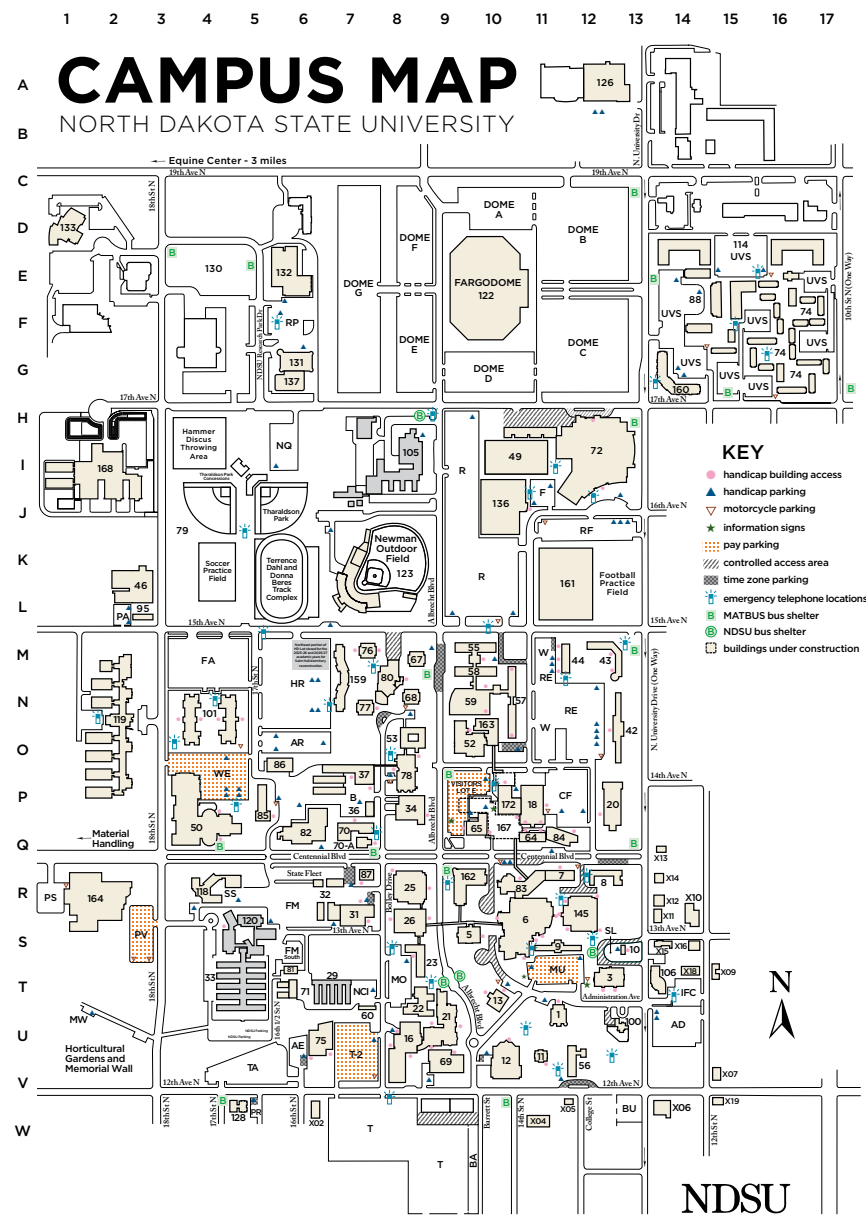
701.231.5200 • ndsu.wellness@ndsu.edu
ndsu.edu/wellness





BISON PRIDE

R12	145	A. Glenn Hill Center
S13	10	Alba Bales House
N10	163	Aldevron Tower
T13	106	Alumni Center, Harry D. McGovern
K2	46	Animal Nutrition and Physiology Center
V9	69	Askanase Hall <i>Barry, Richard H., Hall (811 2nd Ave N)</i>
P12	20	Bentson/Bunker Fieldhouse
I2	168	Bolley Agricultural Laboratory
I8	105	Biosciences Research Laboratory
T13	3	Ceres Hall
U8	16	Challey Hall
I11	49	Dacotah Field
P11	18	Dolve Hall
R11	7	E. Morrow Lebedeff Hall
Q11	84	Ehly Hall
J3	79	Ellig Sports Complex <i>Equine Center (3 miles west of campus on 19th Ave N)</i>
E1	122	Fargodome
Q7	70-A	Gate City Bank Auditorium
R7	87	Hastings Hall
T8	22	Heating Plant
S8	26	Hultz Hall
N2	119	Jack Dalrymple Agricultural Research Complex
R4	118	Johansen Hall
R11	83	Katherine Kilbourne Burgum Family Life, 4-H Center <i>Klai Hall (711 2nd Ave N)</i>
S9	5	Ladd Hall
V10	12	Library
P8	78	Loftsgard Hall
T7	29	Lord and Burnham Greenhouses
R14	X10	Lutheran Student Center
R6	32	Maintenance Buildings
S11	6	Memorial Union
U9	21	Minard Hall
S8	23	Morrill Hall
A12	126	NDSCS Fargo
K8	123	Newman Outdoor Field
K12	161	Nodak Insurance Football Performance Complex
S5	120	Northern Crops Science Laboratory
Q11	64	Offerdahl East
Q10	167	Offerdahl Hall
P10	172	Offerdahl North
Q10	65	Offerdahl West
U11	1	Old Main
L2	95	Parking Office
R2	164	Peltier Complex
T5	33	Plant Sciences Greenhouse
U6	71	Potato Research-Pesticide Storage
W5	128	Prairie Hall
U13	100	President's House
U11	11	Putnam Hall
R8	25	Quentin Burdick Building <i>Renaissance Hall (650 NP Ave)</i>
G6	131	Research 1
G6	137	Research 1A
E6	132	Research 2
E4	130	Research and Technology Park
N9	59	Residence Dining Center
T7	60	Residence Life Facility Services (HVAC Shop)
P5	85	Robinson Hall
I12	72	Sanford Health Athletic Complex/Scheels Center
O5	86	Service Center, Pilot Plant
J10	136	Shelly Ellig Indoor Track and Field Facility
P8	34	Shepperd Arena
T10	13	South Engineering
W14	X06	St. Paul's Chapel
Q7	70	Stevens Hall
O9	52	Sudro Hall
T6	81	Sugar Beet Research
R9	162	Sugihara Hall
D1	133	Technology Incubator
R7	31	Thorson Maintenance Center
U6	75	University Police and Safety
Q6	82	Van Es Hall <i>Veterinary Diagnostic Laboratory (4035 19th Ave N)</i>
P7	37	Waldron Hall
Q4	50	Wallman Wellness Center
O8	53	Walster Hall <i>West Building (3551 7th Ave N)</i>
M8	80	West Dining Center
P7	36	Wiidakas Laboratory



HOUSING UNITS		
G14	160	Apartment 1701
M12	43	Bison Court (East)
M12	44	Bison Court (West)
V12	56	Burgum Hall
M7	159	Cater Hall
R12	8	Churchill Hall
S11	9	Dinan Hall
M10	58	Johnson Hall
N4	101	Mathew Living Learning Center
D15	114	Niskanen Expansion
E14	88	Niskanen Hall
N7	77	Pavek Hall
M10	55	Reed Hall
M7	76	Seim Hall
M8	67	Sevrinson Hall
N13	42	Stockbridge Hall
N8	68	Thompson Hall
F15	166	University Village
N10	57	Weible Hall (North and South)

FRATERNITY AND SORORITY HOUSES		
T15	X09	Alpha Gamma Delta
R13	X11	Alpha Gamma Rho
V15	X07	Alpha Tau Omega
R13	X14	Delta Delta Delta
V12	X05	FarmHouse
S14	X16	Kappa Alpha Theta
S14	X15	Kappa Delta
Q14	X13	Kappa Psi
W6	X02	Sigma Alpha Epsilon
T14	X18	Sigma Chi
V15	X19	Sigma Nu
W11	X04	Tau Kappa Epsilon (under construction, new facility set to open Fall 2026)
R13	X12	Theta Chi

NDSU ORIENTATION

Scan the QR code for more information about campus accessibility.

NDSU does not discriminate in its programs and activities on the basis of age, color, gender expression/identity, genetic information, marital status, national origin, participation in lawful off-campus activity, physical or mental disability, pregnancy, public assistance status, race, religion, sex, sexual orientation, spousal relationship to current employee, or veteran status, as applicable. Direct inquiries to: Vice Provost, Title IX/ADA Coordinator, Old Main 100, 701-231-7708, ndsu.eoaa@ndsu.edu. 2M/05/26