



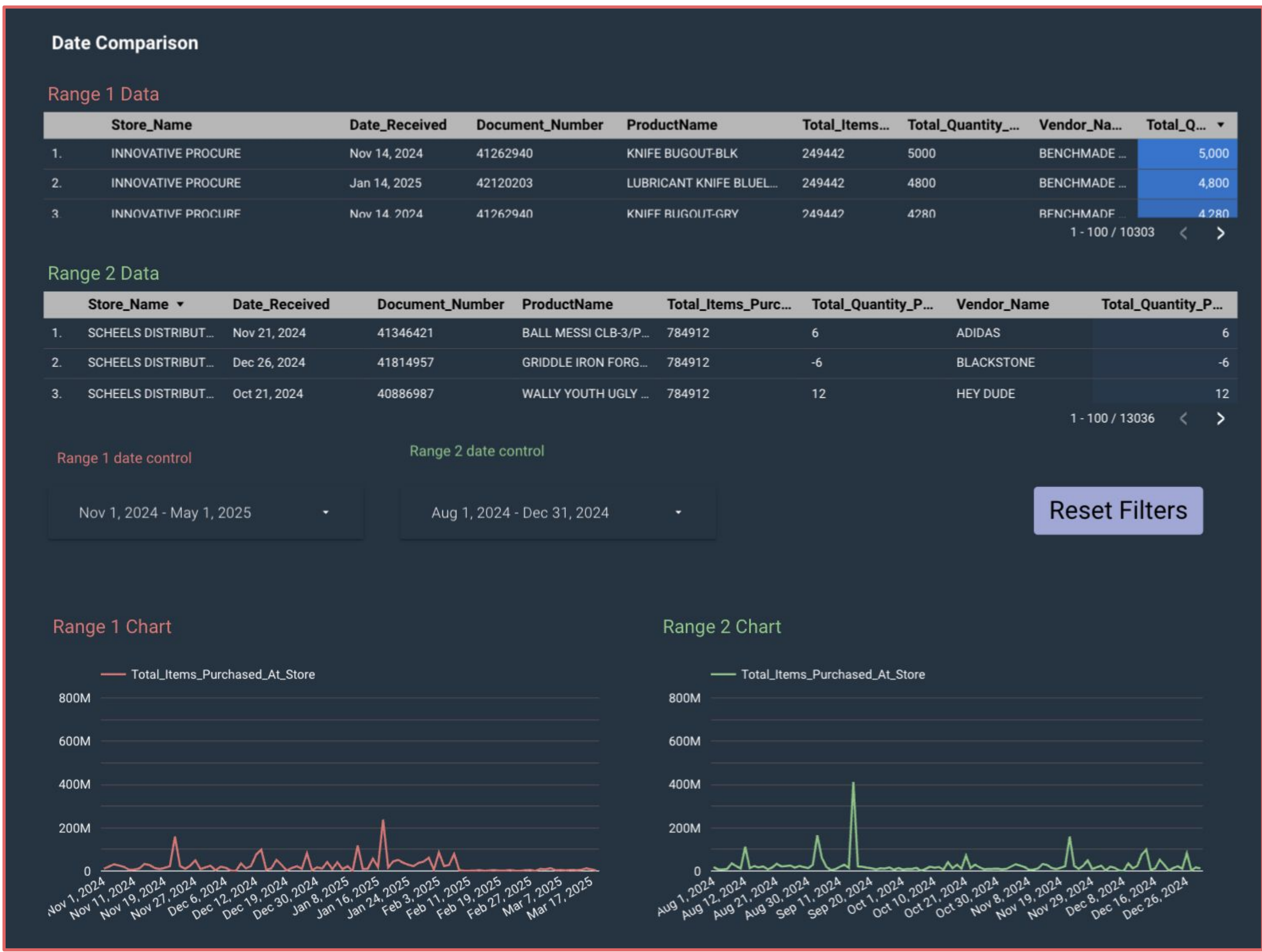
Business Need

- Dashboard for visualizing warehouse data
- Extract insights from collected inventory data
- Notify employee of low stock for a product

Solution

- Developed an interactive multi-page dashboard
- Integrated with BigQuery for efficient data querying
- Developed a console application for notifying user of upcoming product stockouts

A page from the dashboard. Compares data from two user selected date ranges.



Custom SQL query to find top 10 product SKU numbers in dataset. Interacts with a parameter in the dashboard to allow the user to select a vendor.

```

1 SELECT
2   t3.SKU_Description_1 AS product_name,
3   COUNT(t1.Document_Number) AS total_amount,
4   --t4.Vendor_Number AS vendor_number
5
6 FROM
7   ndsupacstone03.initial_test_import.Purchase_History_Header AS t1
8 JOIN
9   ndsupacstone03.initial_test_import.Purchase_History_Details AS t2
10  ON t1.Document_Number = t2.Document_Number
11 JOIN
12   ndsupacstone03.initial_test_import.Product_Information_by_SKU AS t3
13  ON t2.Sku_Number = t3.Sku_Number
14 --JOIN
15 -- ndsupacstone03.initial_test_import.Vendor_Information AS t4
16 -- ON t3.Vendor_Number = t4.Vendor_Number
17 WHERE
18   t3.Vendor_Number = @vendor_num
19 GROUP BY
20   t3.SKU_Description_1 --, t4.Vendor_Number
21 ORDER BY
22   total_amount DESC
23 LIMIT 10;
24
25

```

